

**PAPER TRAY UNIT**  
**Machine Code: G894**

**ENVELOPE FEEDER**  
**(Machine Code: G362)**

December 15th 2006  
Subject to change

# TABLE OF CONTENTS

## 1. Replacement and Adjustment

Paper Feed Unit.....	3
Paper Feed Roller.....	4
Friction Pad.....	5
Paper Feed Clutch, Motor.....	6
Paper Tray Board.....	7
Paper Size Switch.....	8

## 2. Detailed Descriptions

Overview.....	9
Mechanical Components.....	9
Electrical Components.....	9
Paper Feed and Separation.....	11
Paper Lift.....	12
Paper End Detection.....	13
Remaining Paper Detection.....	14
Paper Size Detection.....	15
Safety Fuse.....	16

## 3. Envelope Feeder

Envelope Feeder (G362).....	17
-----------------------------	----



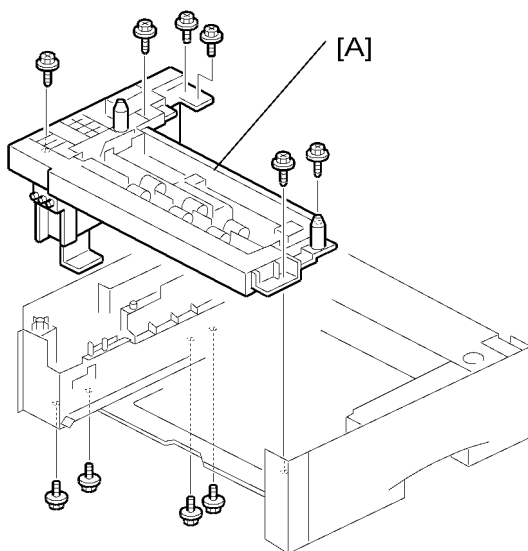
# 1. Replacement and Adjustment

## Paper Feed Unit


1

### CAUTION

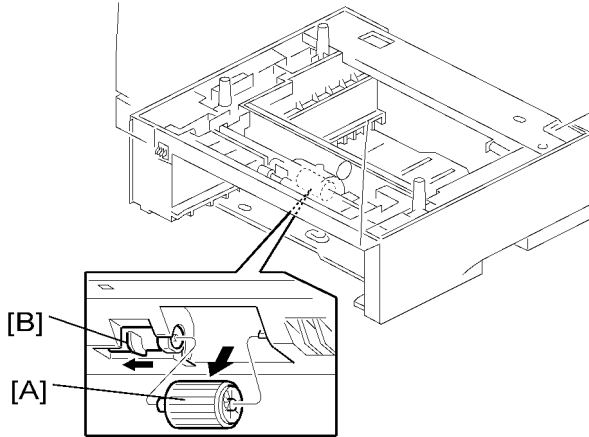
- Turn off the main power switch and unplug the machine before attempting any of the procedures in this section.



g360r001

1. Remove the paper tray unit from the main unit.
2. Pull out the paper tray.
3. Before removing the paper feed unit, turn the main unit over.
4. Remove the paper feed unit [A] ( x10)

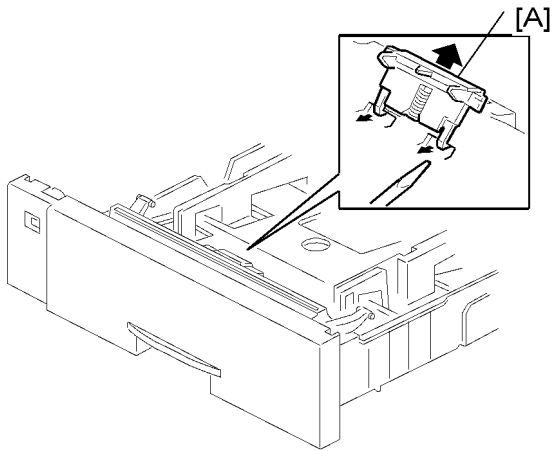
## Paper Feed Roller



g360r103

1. Pull out the paper tray.
2. Pull lever [B] to remove the paper feed roller [A].

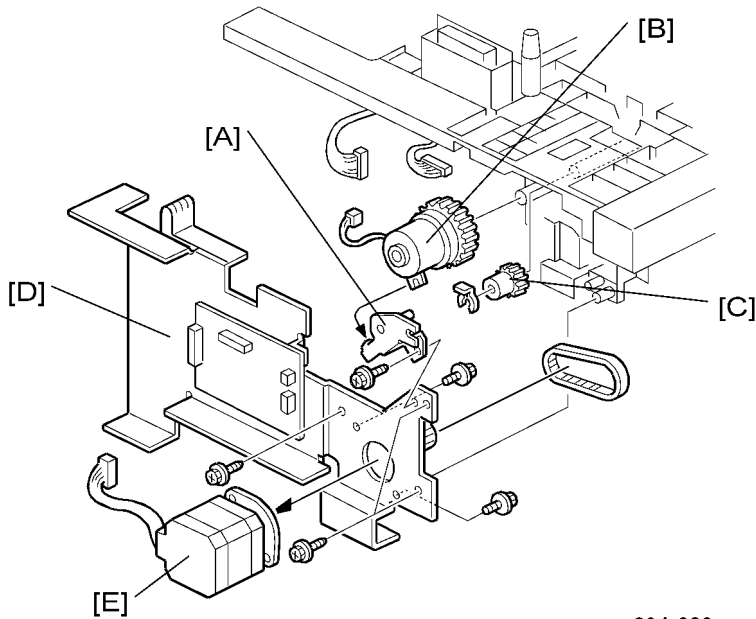
# Friction Pad



g360r102

1. Pull out the paper tray
2. Remove friction pad [A].

## Paper Feed Clutch, Motor



g894r003

[A] Bracket (x1)

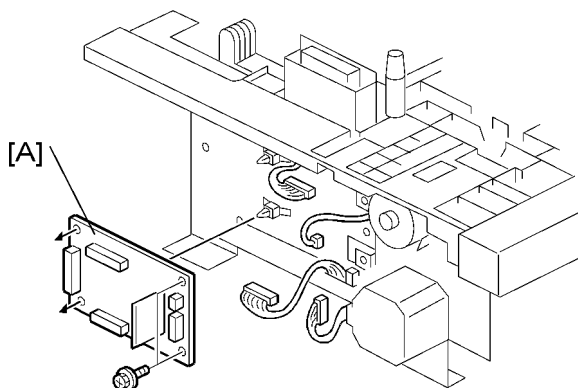
[B] Paper feed clutch (x1, gear x1)

[C] Paper feed gear (x1)

[D] Feed motor bracket (x3, x2)

[E] Feed motor (x2, Timing belt x1, x1)

# Paper Tray Board

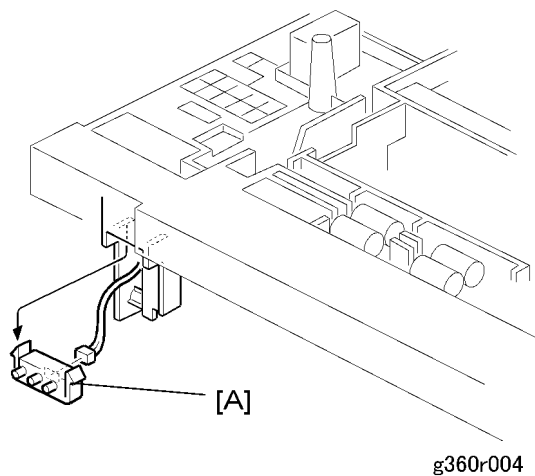


g894r002

[A] Paper tray board (Hooks x3,  x2)

## Paper Size Switch

1



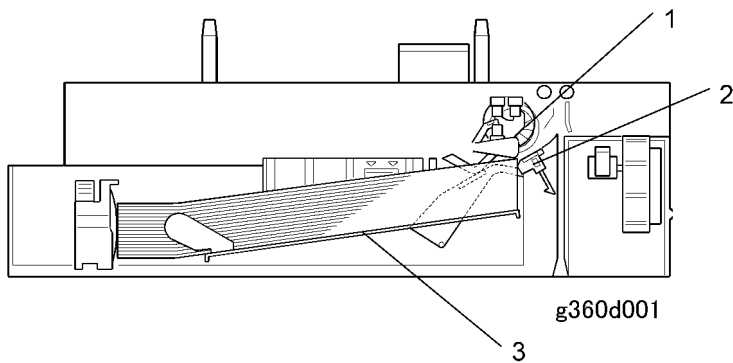
[A] Paper size switch (Hook x1, 1 x1)

## 2. Detailed Descriptions

### Overview

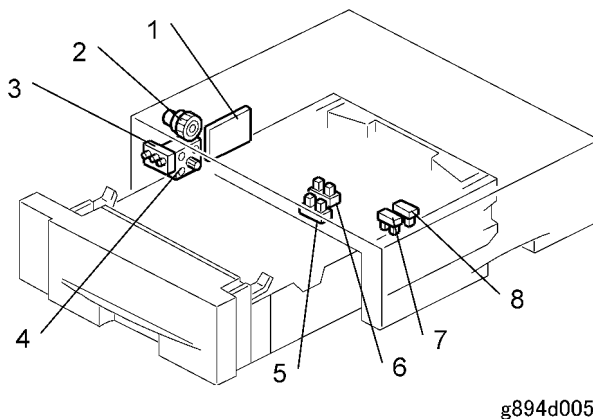
#### Mechanical Components

2



1. Paper feed roller
2. Friction pad
3. Bottom plate

#### Electrical Components



- |                      |                      |
|----------------------|----------------------|
| 1. Paper tray board  | 3. Paper size switch |
| 2. Paper feed clutch | 4. Paper feed motor  |

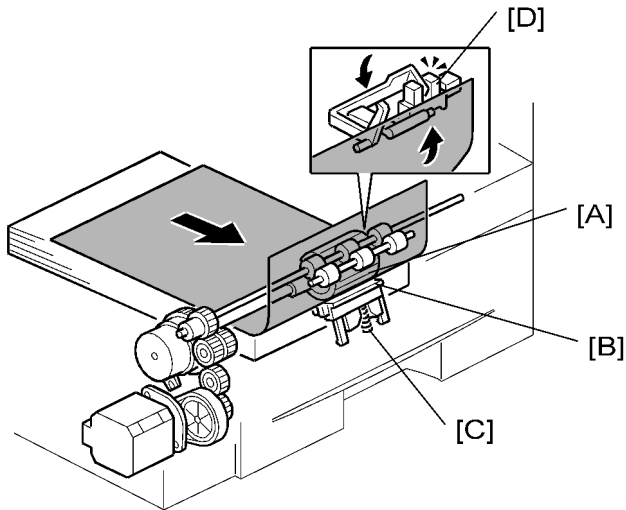
5. Paper end sensor

6. Paper feed sensor

7. Remaining paper sensor 1

8. Remaining paper sensor 2

# Paper Feed and Separation



g894d004

The paper tray holds 500 sheets of paper

The paper feed unit uses the feed roller and friction pad method to separate paper.

[A] Paper feed roller

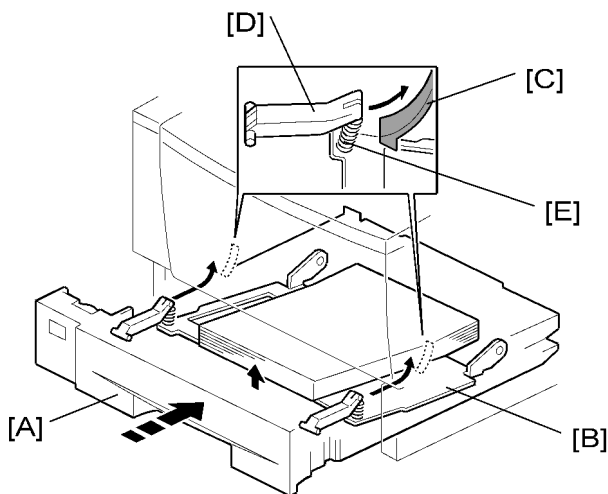
[B] Friction pad

[C] Pressure spring

[D] Paper feed sensor

## Paper Lift

Paper lift is the same as for the main unit.

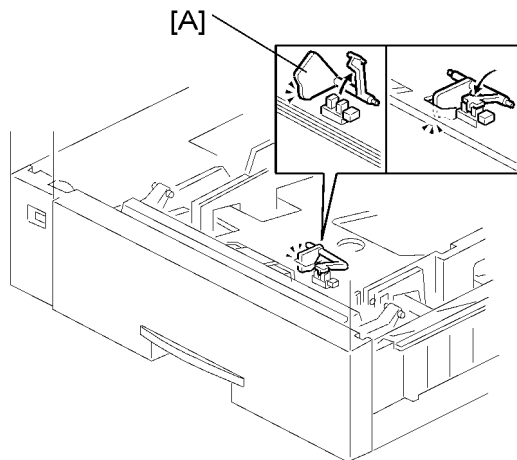


g094d004

When the user puts the tray [A] in the machine, the bottom plate [B] lifts as follows.

- The slopes on the guide blocks [C] on the machine lift the tray arms [D] up.
- The springs [E] between the tray arms and bottom plates lift the plate.
- The springs [E] keep the top sheet of the paper at the correct height.

## Paper End Detection

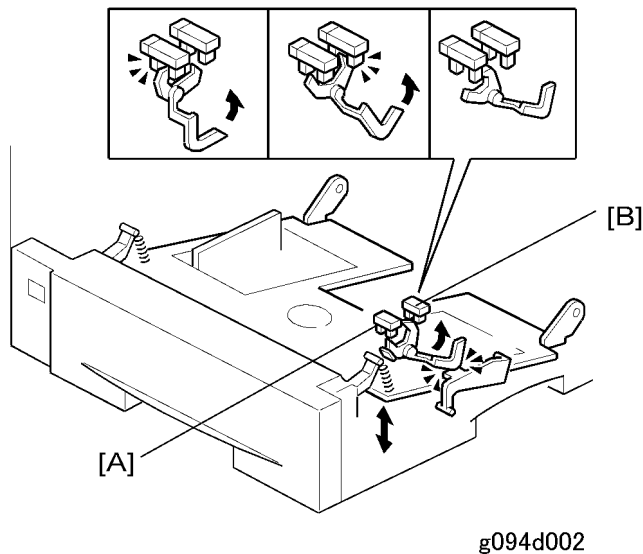


g360d103

When the paper tray runs out of paper, the feeler [A] drops into the cutout in the bottom plate to actuate the remaining paper sensor.

# Remaining Paper Detection

2



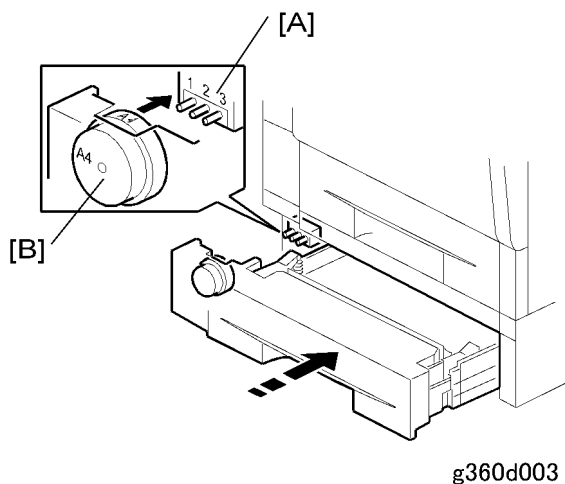
[A] Remaining paper sensor 1

[B] Remaining paper sensor 2

Amount of paper	Remaining Paper Sensor 1	Remaining Paper Sensor 2
0 sheets (0%)	On	On
50 sheets (10%)	On	On
250 sheets (50%)	On	Off
450 sheets (90%)	Off	Off
500 sheets (100%)	Off	On

OFF: Actuator Out, ON: Actuator In

# Paper Size Detection



[A] Paper size switch

[B] Paper size dial

Paper Size	SW1	SW2	SW3
A4 SEF	ON	ON	OFF
A5 SEF	ON	OFF	ON
B5 SEF	OFF	ON	OFF
Custom Size	ON	OFF	OFF
LG SEF	OFF	OFF	OFF
LT SEF	OFF	OFF	ON
HLT SEF	OFF	ON	ON

ON (Not pushed)

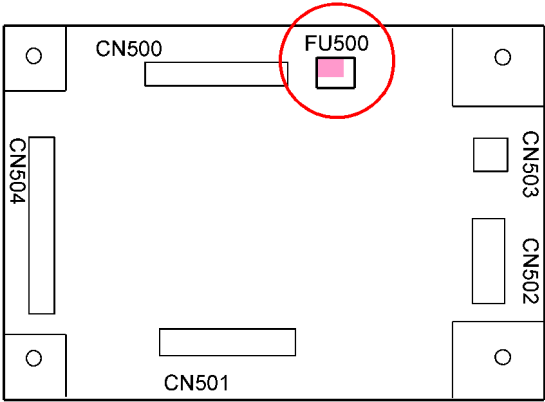
OFF (Pushed)

The machine disables paper feed from a tray if the paper size cannot be detected (if the paper size actuator is broken or no tray is installed)

When the paper size dial is at the "\*" mark, the paper tray can be set up to accommodate one of a wider range of paper sizes by using a User Tool at the machine's operation panel (Paper Input menu – Tray Paper Size).

# Safety Fuse

2



g894d901b

Name	Rating	Manufacturer	Type No.
FU500	DC50V/1.5A	ROHM CO.,LTD	ICP-N38

# 3. Envelope Feeder

---

## Envelope Feeder (G362)

This envelope feeder is a tray that slides into the optional paper feed unit, replacing the paper tray. If two optional trays have been installed, the envelope feeder must go into the top tray.

The layout is the same as the paper tray:

- The tray pushes down and locks the mechanism in place
- The paper size can be fixed using the end fence.
- The end fence prevents the envelopes from overflowing and spilling out of the envelope unit.

---

MEMO

---

MEMO

---

MEMO