

Model: Cattleya 20bin sorter stapler		Date: 15-Dec-99	No.: MA831001
Modified Article: Parts catalog correction		Prepared by: H. Matsui	
From: Technical Service Dept., GTS Division			
Reason for Modification:	<input checked="" type="checkbox"/> Parts catalog correction	<input type="checkbox"/> Vendor change	<input type="checkbox"/> To meet standards ()
	<input type="checkbox"/> To facilitate assembly	<input type="checkbox"/> To improve reliability	
	<input type="checkbox"/> Part standardization	<input type="checkbox"/> Other	

Please correct your parts catalog as follows:

Incorrect part number	Correct part number	Description	Q'ty	Int	Page	Index	Note
A6641875	A8312562	Joint Arm	1-1		3	21	
A6976200	A8314511	Stud screw – M4	1-1		3	22	

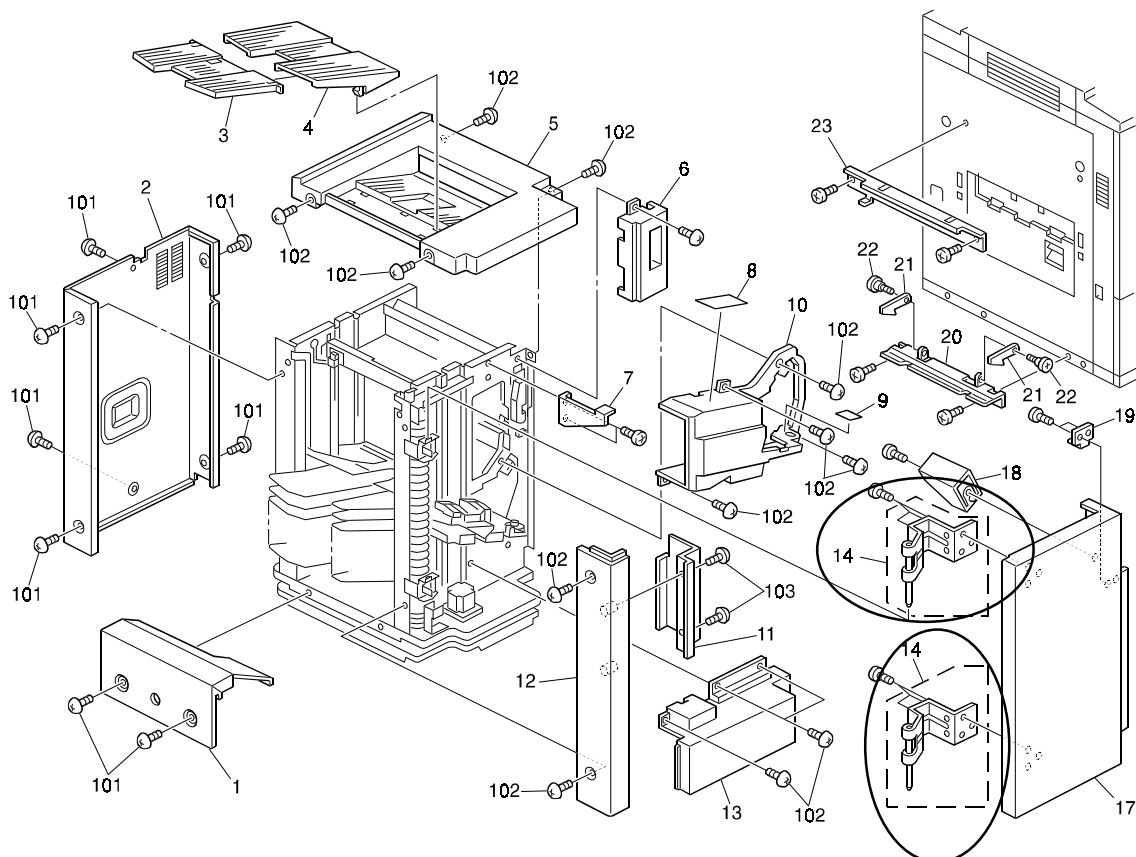
Model: Cattleya 20bin sorter stapler		Date: 31-Jan-00	No.: MA831002
Modified Article: Parts catalog correction		Prepared by: H. Matsui	
From: Technical Service Dept., GTS Division			
Reason for Modification:	<input checked="" type="checkbox"/> Parts catalog correction <input type="checkbox"/> To facilitate assembly <input type="checkbox"/> Part standardization	<input type="checkbox"/> Vendor change <input type="checkbox"/> To improve reliability <input type="checkbox"/> Other	<input type="checkbox"/> To meet standards ()

Please correct your parts catalog as follows:

Part number	Description	Page	Incorrect Index	Correct Index
A8312562	Joint Arm	3	15	21
A8314511	Stud Screw – M4	3	16	22

NOTE: Please make following corrections:

1. Index callout # for P/No.A8312562 and A8314511 were incorrect. Index callout # for these two items should be #21 and #22. (Please refer to the previous MB #MA831001 issued on Dec. 15. 1999)
2. P/No. A8311645 (Hinge Bracket : callout #14) is available only as an assembly. Therefore, callouts #15 and #16 should be deleted. Please replace the illustration with the following correct one:

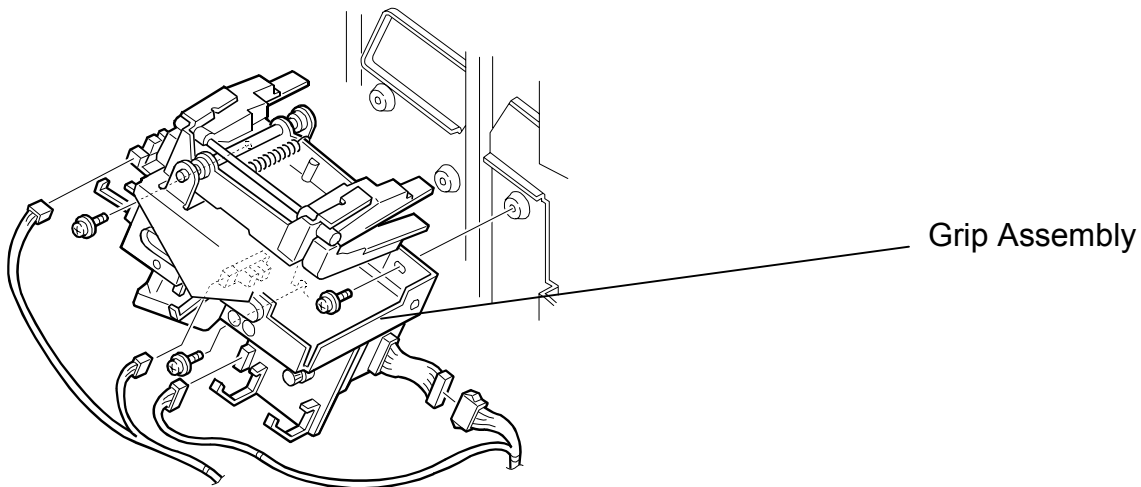


Model: Cattleya 20bin sorter stapler		Date: 07-Dec-00	No.: MA831003
Modified Article: Grip Assembly		Prepared by: H.K.	
From: Technical Services Dept., GTS Division			
Reason for Modification:	<input type="checkbox"/> Parts catalog correction	<input type="checkbox"/> Vendor change	<input type="checkbox"/> To meet standards ()
	<input type="checkbox"/> To facilitate assembly	<input type="checkbox"/> To improve reliability	
	<input type="checkbox"/> Part standardization	<input checked="" type="checkbox"/> Other	

Old part number	New part number	Description	Q'ty	Int	Page	Index	Note
	A8214400	Grip Assembly	1		5	#*	

#: New Index

As per field request, the grip assembly has been registered as a spare part.



Model: Cattleya 20bin Sorter Stapler		Date: 26-Feb-01	No.: MA831004
Modified Article: Main control board and EPROM		Prepared by: H. Matsui	
From: Technical Services Dept., GTS Division			
Reason for Modification:	<input type="checkbox"/> Parts catalog correction <input type="checkbox"/> To facilitate assembly <input type="checkbox"/> Part standardization	<input type="checkbox"/> Vendor change <input type="checkbox"/> To improve reliability <input checked="" type="checkbox"/> Other	<input type="checkbox"/> To meet standards ()

To compensate for the higher copy speed of the Cattleya 2, the program in the EPROM has been modified. Therefore, the following part numbers have been changed.

Old part number	New part number	Description	Q'ty	Int	Page	Index	Note
A8315100	A8315110	Main Control Board	1	X/O	17	17	
A8315103	A8315111	EPROM	1	X/O	17	18	

The above parts are listed in both Cattleya 1 and Cattleya 2 parts catalogs.

Sindo (Korea) Production

Model	V/Hz	Destination	Code	Serial Number
ST33	-	Europe, USA, Asia, Middle East, etc.	A831-17	H141130001
ST33	-	Europe	A831-26	3T60110001
ST33	-	USA	A831-55	L0551XXXXXX

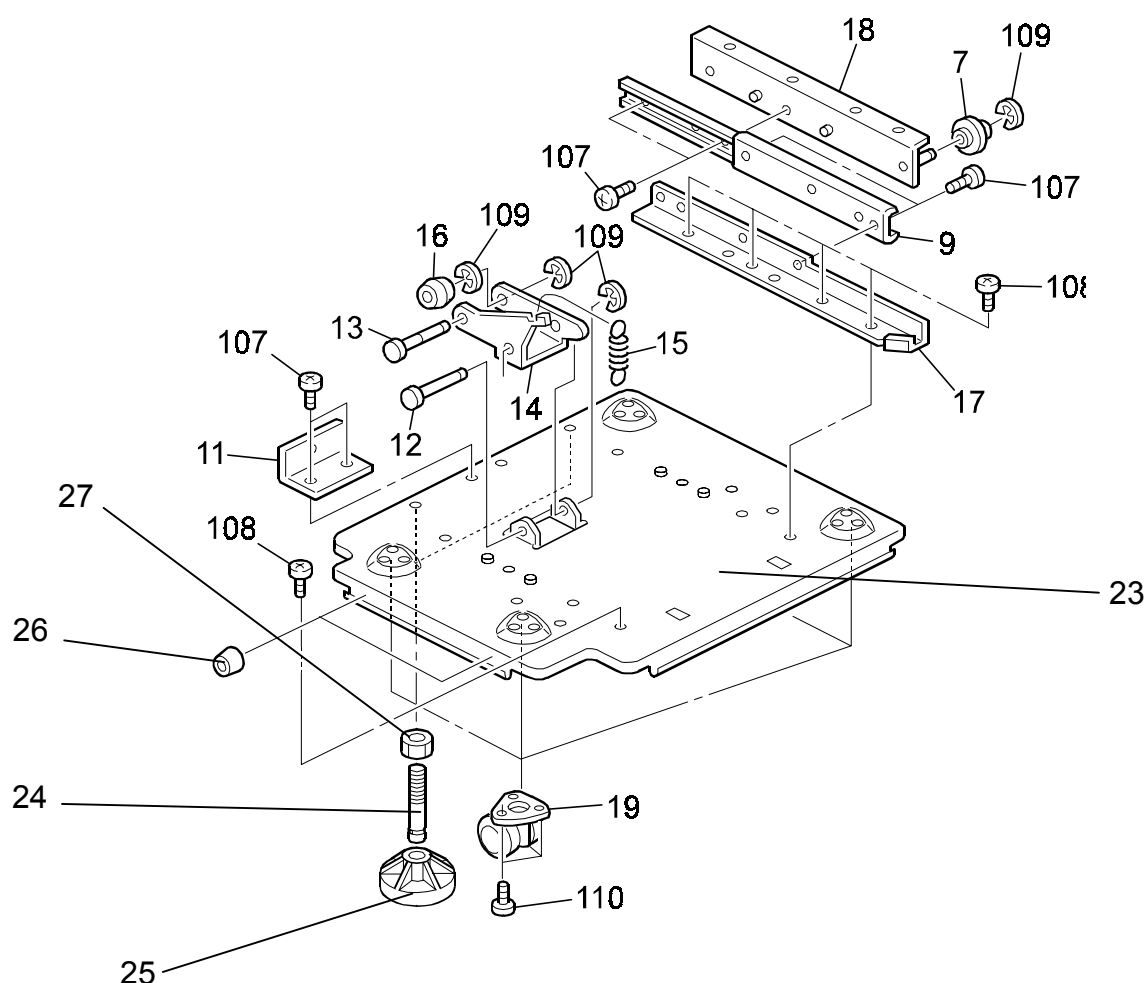
Model: Cattleya 20bin Sorter Stapler		Date: 27-Feb-01	No.: MA831005
Modified Article: Height adjuster		Prepared by: H. Matsui	
From: Technical Services Dept., GTS Division			
Reason for Modification:	<input checked="" type="checkbox"/> Parts catalog correction <input type="checkbox"/> To facilitate assembly <input type="checkbox"/> Part standardization	<input type="checkbox"/> Vendor change <input type="checkbox"/> To improve reliability <input type="checkbox"/> Other	<input type="checkbox"/> To meet standards ()

New part number	Description	Q'ty	Int	Page	Index	Note
A8311552	Base Plate - Lower	1	-	29	23	*1
A8314521	Adjusting Shaft	2	-	29	24	*2
A6816122	Stand Adjuster	2	-	29	25	*2
A8316522	Cushion – 10 x 18	2	-	29	26	*2
08049050	NUT M8	2	-	29	27	*3

*1: The call out number was missing.

*2: The illustration was missing.

*3: Newly registered item



Model: Cattleya 20bin Sorter Stapler		Date: 7-Jan-05	No.: MA831006
Modified Article: Bin		Prepared by: H. Matsui	
From: 1st Tech. Support Sec. Service Support Dept.			
Reason for Modification:	<input checked="" type="checkbox"/> Parts catalog correction <input type="checkbox"/> To facilitate assembly <input type="checkbox"/> Part standardization	<input type="checkbox"/> Vendor change <input type="checkbox"/> To improve reliability <input type="checkbox"/> Other	<input type="checkbox"/> To meet standards ()

Please correct your parts catalog as follows.

Illustration for call out number 7 has been corrected.

Page: 12

BIN DRIVE SECTION 1 (A831)

