

Model: V-C1 Punch Unit Type 3260	Date:4-Sep-09	No.: RB700005
----------------------------------	---------------	---------------

Subject: Parts Registration (Punch Unit Type 3260)		Prepared by: T.Toriumi	
From: 2nd Tech. Support Sec. Service Support Dept.			
Classification:	<input type="checkbox"/> Troubleshooting <input type="checkbox"/> Mechanical <input type="checkbox"/> Paper path <input type="checkbox"/> Other ()	<input checked="" type="checkbox"/> Part information <input type="checkbox"/> Electrical <input type="checkbox"/> Transmit/receive	<input type="checkbox"/> Action required <input type="checkbox"/> Service manual revision <input type="checkbox"/> Retrofit information

1. Punch Unit 1 (B702)

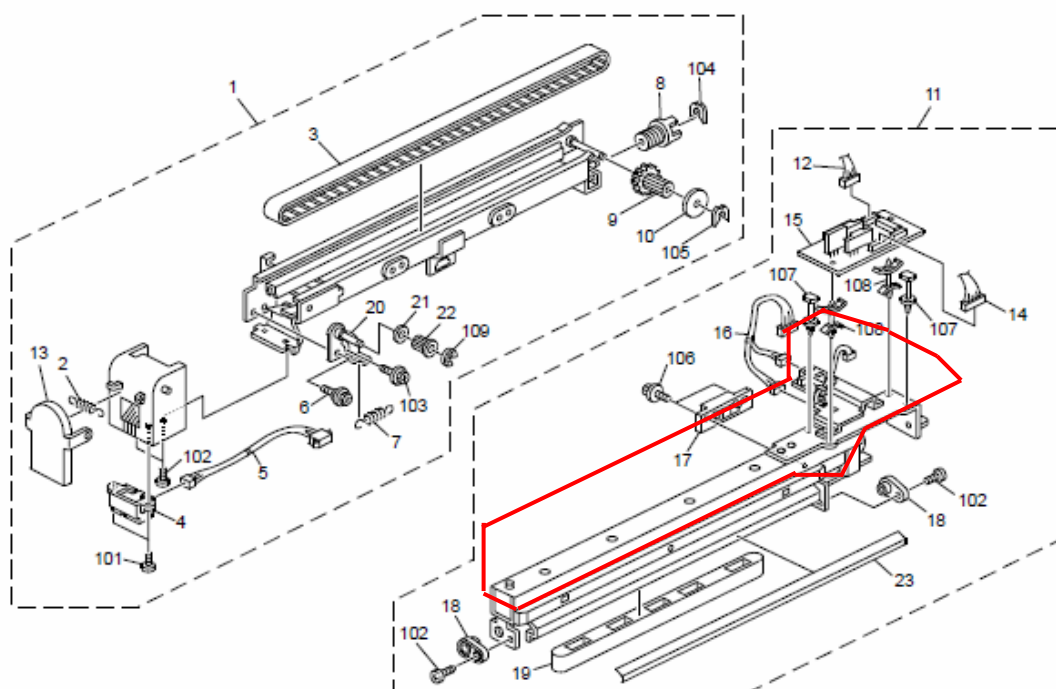
Old part number	New part number	Description	Q'ty	Int	Page	Index	Note
-	B7027357	PUNCH UNIT:NA: CHANGE:ASS'Y	0-1	-	3	24	New Index
-	B7027367	PUNCH UNIT:EU: CHANGE:ASS'Y	0-1	-	3	25	New Index

Change: The punch unit assembly was added (circled in red in the illustration).

Reason: To enable the assembly to be replaced in the field.

Important: The component parts of the assembly, such as the motor, cannot be replaced individually in the field. This is because they can only be removed and installed using specialized equipment at the factory.

1.Punch Unit 1 (B702)



Model: Punch Unit Type 3260

Date: 16-Dec-09

No.: RB700007

Subject: Parts Catalog Correction

Prepared by: T.Toriumi

From: 1st Overseas Tech Support Sec., 1st PQM Dept.

Classification:

☐ Troubleshooting

☒ Part information

☐ Action required

☐ Mechanical

☐ Electrical

☐ Service manual revision

☐ Paper path

☐ Transmit/receive

☐ Retrofit information

☐ Other ()

B702 Parts Catalog Correction

Please replace Pg.4 with the following.

Change/Reason:

Illustration has been modified.

2.Punch Unit 2 (B702)

