

Model: Model V-C1 Finisher (SR841)	Date: 29-Mar-06	No.: RB706001
------------------------------------	-----------------	---------------

Subject: Stopper Vibrating Plate		Prepared by: H. Matsui	
From: 2nd Tech. Support Sec. Service Support Dept.			
Classification:	<input type="checkbox"/> Troubleshooting <input type="checkbox"/> Mechanical <input type="checkbox"/> Paper path <input type="checkbox"/> Other (      )	<input checked="" type="checkbox"/> Part information <input type="checkbox"/> Electrical <input type="checkbox"/> Transmit/receive	<input type="checkbox"/> Action required <input type="checkbox"/> Service manual revision <input type="checkbox"/> Retrofit information

## Important Note Regarding a New Finisher Accessory

The following part was added to the accessory list for the Finisher Adapter Kit B698. 

**Service parts P/N:** B6984125

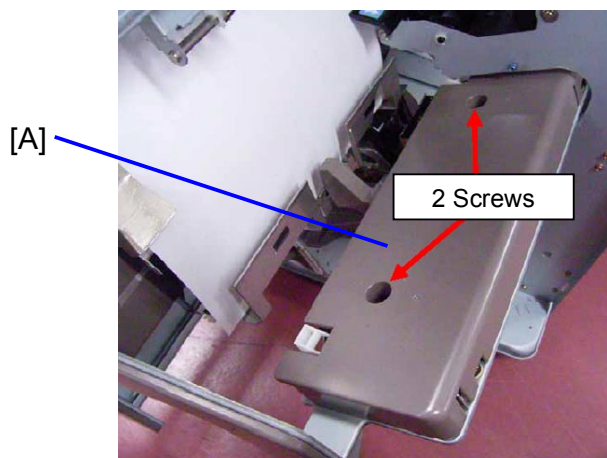
**Purpose:** To improve stapling when using curled paper.

**Installation procedure:** See below.



### Installation Procedure: B6984125

1. Open the finisher front cover and pull the jogger unit out of the finisher.  
See **Service Manual**, pg. 1-85
2. Remove the inner cover [A] (2 screws).



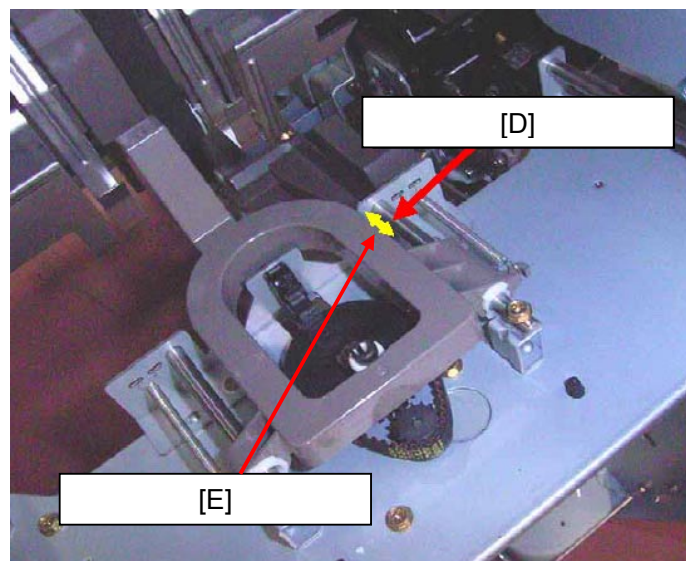
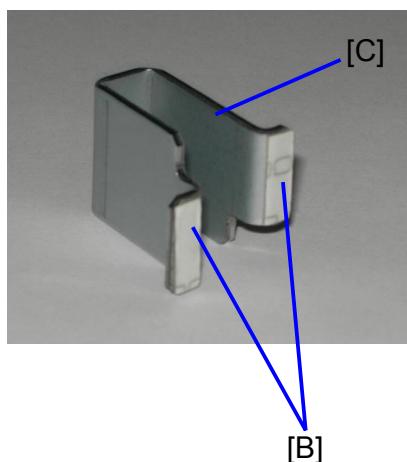
Model: Model V-C1 Finisher (SR841)

Date: 29-Mar-06

No.: RB706001

3. Peel the two-sided tape [B] off the new bracket [C].
4. Attach the new bracket to position [D].

**See the details below.**

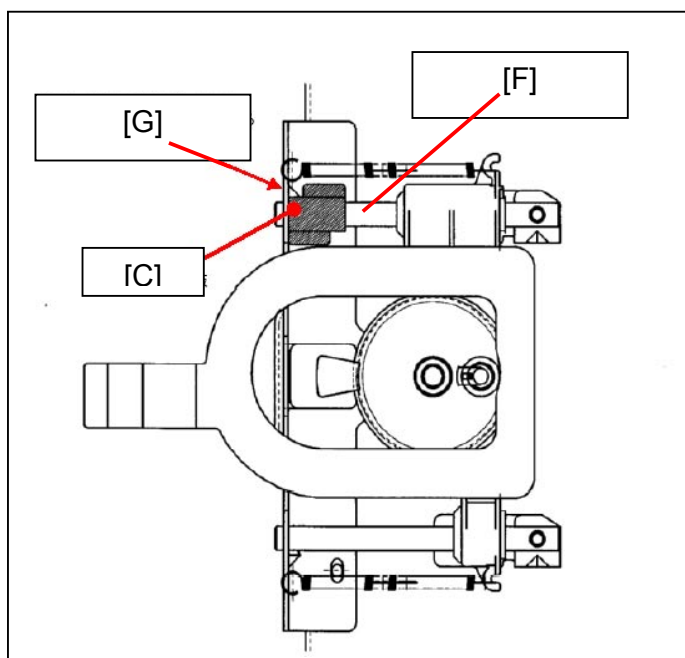


**Important:**

- Make sure the new bracket [C] is flat against the edge of bracket [G].
- Make sure the new bracket [C] covers the shaft [F].

**Note:**

- The new bracket [C] limits the movement of the paper pressure unit [E]. This is to prevent the paper pressure unit from pressing curled paper too much. If curled paper is pressed too hard, the staple position will sometimes shift out of position,



Model: Bellini-C2/Model V-C1 Finisher (SR841/SR842)

Date:8-Jul-09

No.: RB706002

Subject: COVER: HARNESS: DOOR SWITCH

Prepared by: T.Toriumi

From: 2nd Tech. Support Sec. Service Support Dept.

Classification:

☐ Troubleshooting

☒ Part information

☐ Action required

☐ Mechanical

☐ Electrical

☐ Service manual revision

☐ Paper path

☐ Transmit/receive

☐ Retrofit information

☐ Other ( )

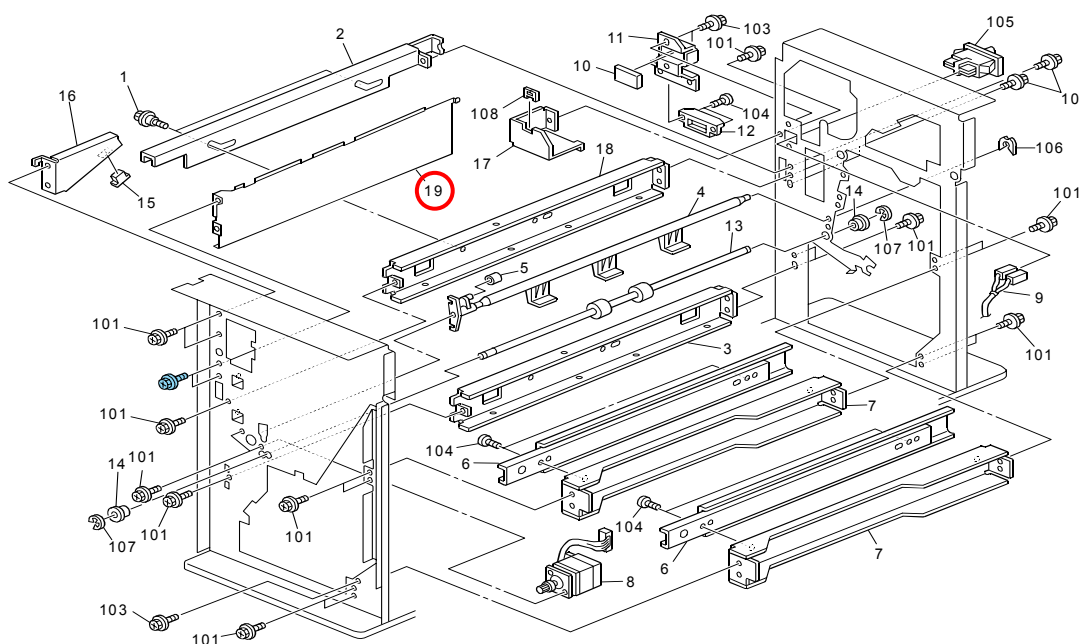
## 20. FRAME SECTION 1 (B706)

Old part number	New part number	Description	Q'ty	Int	Page	Index	Note
-	D4601146	COVER: HARNESS: DOOR SWITCH	0-1	-	45	19	New Index
-	04513006N	Tapping Screw - M3x6	0-2	-	45	101	-

**Change:** This part was added.

**Reason:** To further protect the harness inside the machine from being touched.

**Note:** There is only a small possibility of the above case, so this part does not need to be applied to the punch units which are already in the field.



### RCL (Japan) Production (B706)

MODEL NAME	CODE	SERIAL NO.
SR842	B706-37	K3190200070

Model: B-C2/Model V-C1 Finisher (SR841/SR842)	Date:24-Jul-09	No.: RB706003
---	----------------	---------------

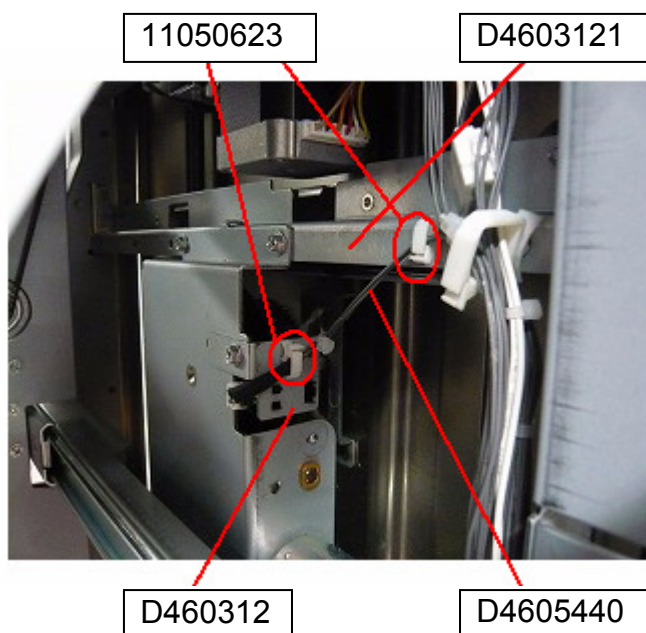
Subject: Harness for paper sensor		Prepared by: K. Yamamoto	
From: 2nd Tech. Support Sec. Service Support Dept.			
Classification:	<input type="checkbox"/> Troubleshooting <input type="checkbox"/> Mechanical <input type="checkbox"/> Paper path <input type="checkbox"/> Other (      )	<input checked="" type="checkbox"/> Part information <input type="checkbox"/> Electrical <input type="checkbox"/> Transmit/receive	<input type="checkbox"/> Action required <input type="checkbox"/> Service manual revision <input type="checkbox"/> Retrofit information

Old part number	New part number	Description	Q'ty	Int	Page	Index	Note
B7065440	D4605440	HARNESS:SENSOR:RETURN:SURFACE OF PAPER SENSOR	1	X/O	37	*23	
A6973205	D4603205	BRACKET:PHOTOINTERRUPTOR:SHIFT	1	X/O	37	13	
B4783121	D4603121	EXIT STAY	1	X/O	37	15	
	11050623	CLAMP - LBWS-0206S-V0	1	as a set	37	*24	New Index

### Change:

- 1) The shapes of the first three parts in the table were changed.
- 2) A harness clamp was added.

**Reason:** To facilitate a change in the layout (leading) of the harness, which further ensures that the harness connectors stay properly fixed in place.



Reissued:28-Jul-09



Model: Model V-C1 Finisher (SR841)

Date: 23-Jul-06

No.: RB706004a

## RTB Reissue

The pictures were changed.

Subject: Stapler tray

Prepared by: K. Yamamoto

From: 2nd Tech. Support Sec. Service Support Dept.

Classification:

☒ Troubleshooting

☒ Part information

☐ Action required

☐ Mechanical

☐ Electrical

☐ Service manual revision

☐ Paper path

☐ Transmit/receive

☐ Retrofit information

☐ Other ( )

## SYMPTOM:

Paper jam

## CAUSE:

Excessive force was placed on the shaft bearing (stapler tray rib shown below), damaging the area.



Stapler tray



Before damage



After damage

## SOLUTION:

### In the field:

If the symptom occurs, attach the new shaft bracket (B8304783) and modified shaft (B7064785).

See the procedure on the next page.

## Parts information:

Old part number	New part number	Description	Q'ty	Int	Page	Index	Note
	B8304783	BRACKET:EXIT:UPPER	1	X/O	15	40*	
B3024717	B7064785	SHAFT:EXIT:UPPER	1	As a set	15	20	

\*New Index

**Reissued:28-Jul-09**

Model: Model V-C1 Finisher (SR841)

Date: 23-Jul-06

No.: RB706004a

## Installation Procedure

1. Remove the rear cover (screw x 2).



2. Remove the E-ring.
3. Remove the belt.
4. Pull out the stapler unit.
5. Remove the pulley.





**Reissued:28-Jul-09**

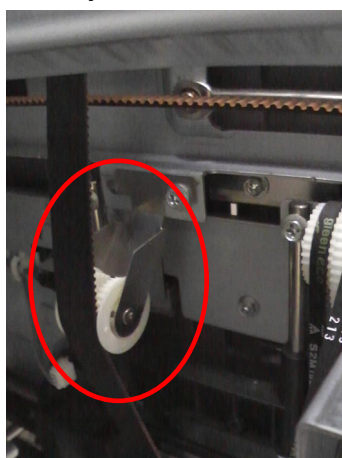
Model: Model V-C1 Finisher (SR841)

Date: 23-Jul-06

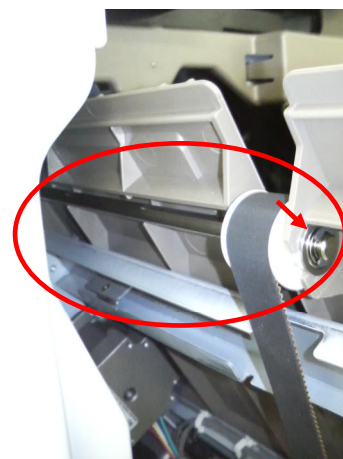
No.: RB706004a

6. Remove the belt from the pulley to loosen the belt.

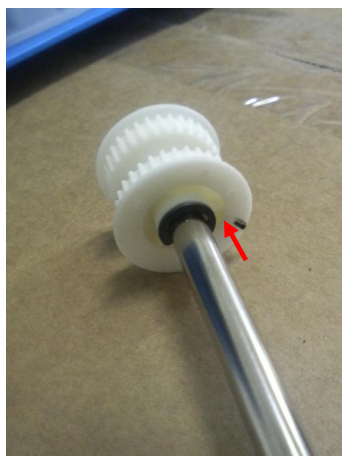
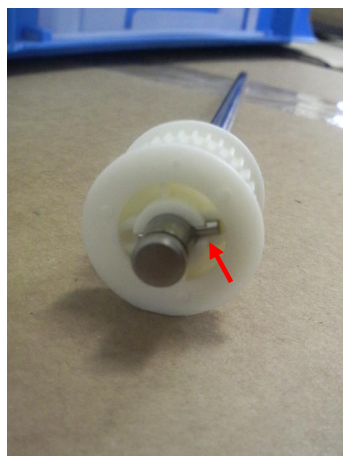
**Important:** Be careful that you do not bend the plate spring.



7. Remove the E-ring.  
8. Remove the bearing.  
9. Remove the shaft and gear.



10. Remove the old shaft from the gear.



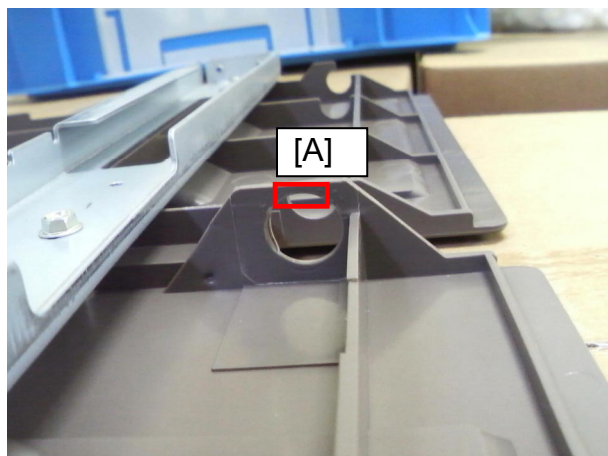
**Reissued:28-Jul-09**

Model: Model V-C1 Finisher (SR841)

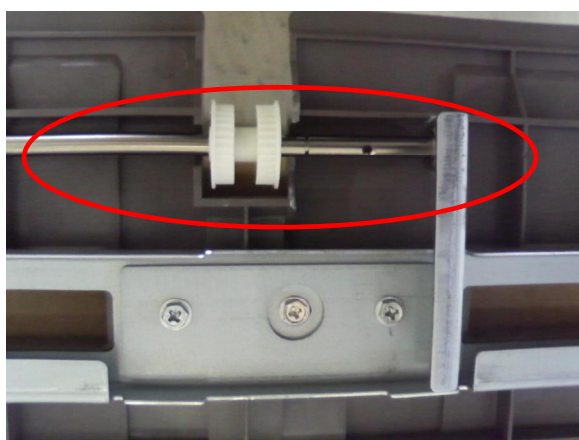
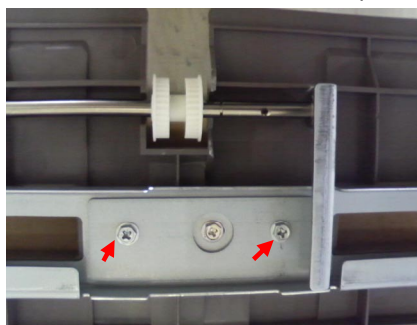
Date: 23-Jul-06

No.: RB706004a

11. Remove the E-ring.
12. Remove the pin.
13. Insert the new shaft into the gear, using the E-ring and pin you removed in Steps 11 and 12.
14. Cut off the rib [A].



15. Attach the new bracket (P/N B8304784).
16. Attach the new shaft (bearing x 1, E-ring x 1).



17. Reattach all of the other parts you removed.



**Reissued:28-Jul-09**

Model: Model V-C1 Finisher (SR841)	Date: 23-Jul-06	No.: RB706004a
------------------------------------	-----------------	----------------

**At the factory:**

The following three “New parts” are used.

Old part number	New part number	Description	Q'ty	Int	Page	Index	Note
B4784713	B4784714	GUIDE PLATE:STAPLER TRAY	1	X/O	13	14	
	B8304783	BRACKET:EXIT:UPPER	1	X/O	15	40*	
B3024717	B7064785	SHAFT:EXIT:UPPER	1	as a set	15	20	

\* New index.

**Important:** If you install the new stapler tray (B4784714) in the field, also install the new bracket (B8304783) and shaft (B7064785) **together as a set.**

Model: MT-C4 Finisher SR4050	Date: 11-Aug-09	No.: RD460002
------------------------------	-----------------	---------------

Subject: DC motor		Prepared by: K. Yamamoto	
From: 2nd Tech. Support Sec. Service Support Dept.			
Classification:	<input type="checkbox"/> Troubleshooting <input type="checkbox"/> Mechanical <input type="checkbox"/> Paper path <input type="checkbox"/> Product Safety	<input checked="" type="checkbox"/> Part information <input type="checkbox"/> Electrical <input type="checkbox"/> Transmit/receive <input type="checkbox"/> Other (     )	<input type="checkbox"/> Action required <input type="checkbox"/> Service manual revision <input type="checkbox"/> Retrofit information <input checked="" type="checkbox"/> Tier 2

This RTB applies to the Victoria D and G.

Old part number	New part number	Description	Q'ty	Int	Page	Index	Note
	D4603402	DRIVE SUB-UNIT:SHIFT:ASS'Y	1	X/O	33	20*	
AX050277	AX050323	DC MOTOR:24V:9W	1	X/O	33	11	
B3023212	D4603214	BRACKET:SHIFT:ASS'Y	1	as a set	33	10	
	D4603011	DRIVE UNIT:UPPER LOWER:ASS'Y	1	X/O	31	27*	
AX050277	AX050323	DC MOTOR:24V:9W	1	X/O	31	4	
A6973130	D4603130	BRACKET:DRIVE:UPPER LOWER:ASS'Y	1	as a set	31	3	

**Change:** The shape of the DC motor was changed. In accordance with this, the shapes of the brackets were also changed.

**Reason:** To improve the reliability of the motor.

**Important:** When you install the new DC motor for the first time (AX050323), install the motor and bracket **together as a set**. To do this, order the assembly part (D4603402 or D4603011).

**Note:**

- The D4603402 assembly contains AX050323 (motor) and D4603214 (bracket).
- The D4603011 assembly contains AX050323 (motor) and D4603130 (bracket).

Reissued:29-Sep-09

Model: Model V-C1 Finisher (SR841)	Date: 23-Jul-06	No.: RB706004b
------------------------------------	-----------------	----------------

## RTB Reissue

The areas in ***bold/italics*** were revised.

Subject: Stapler tray		Prepared by: K. Yamamoto	
From: 2nd Tech. Support Sec. Service Support Dept.			
Classification:	<input checked="" type="checkbox"/> Troubleshooting <input type="checkbox"/> Mechanical <input type="checkbox"/> Paper path <input type="checkbox"/> Other (      )	<input checked="" type="checkbox"/> Part information <input type="checkbox"/> Electrical <input type="checkbox"/> Transmit/receive	<input type="checkbox"/> Action required <input type="checkbox"/> Service manual revision <input type="checkbox"/> Retrofit information

## SYMPTOM:

Paper jam

## CAUSE:

Excessive force was placed on the shaft bearing (stapler tray rib shown below), damaging the area.



Stapler tray



Before damage



After damage

## SOLUTION:

### In the field:

If the symptom occurs, attach the new shaft bracket (B8304783) and modified shaft (B7064785).

See the procedure on the next page.

## Parts information:

Old part number	New part number	Description	Q'ty	Int	Page	Index	Note
	B8304783	BRACKET:EXIT:UPPER	1	X/O	15	40*	
B3024717	B7064785	SHAFT:EXIT:UPPER	1	As a set	15	20	

\*New Index

**Reissued:29-Sep-09**

Model: Model V-C1 Finisher (SR841)

Date: 23-Jul-06

No.: RB706004b

## Installation Procedure

1. Remove the rear cover (screw x 2).



2. Remove the E-ring.
3. Remove the belt.
4. Pull out the stapler unit.
5. Remove the pulley.



**Reissued:29-Sep-09**

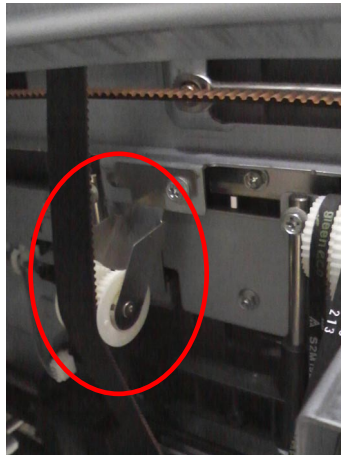
Model: Model V-C1 Finisher (SR841)

Date: 23-Jul-06

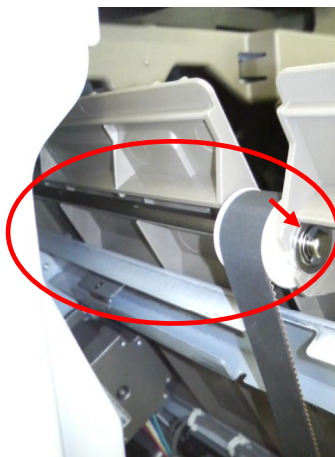
No.: RB706004b

6. Remove the belt from the pulley to loosen the belt.

**Important:** Be careful that you do not bend the plate spring.



7. Remove the E-ring.  
8. Remove the bearing.  
9. Remove the shaft and gear.





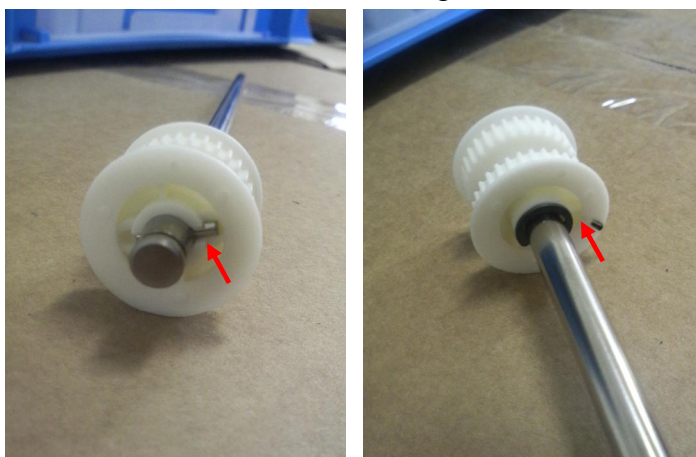
**Reissued:29-Sep-09**

Model: Model V-C1 Finisher (SR841)	Date: 23-Jul-06	No.: RB706004b
------------------------------------	-----------------	----------------

- 10. Replace the upper stay with P/N B4784738 on the following machines only.**  
**See the procedure in "APPENDIX" below.**

<b>Model code:</b>	<b>REPLACE the stay on:</b>
<b>B478-17</b>	<b>ALL machines</b>
<b>B478-26</b>	<b>ALL machines</b>
<b>B478-53</b>	<b>All machines produced BEFORE: J4951000001</b>
<b>B478-57</b>	<b>All machines produced BEFORE: J4950900035</b>
<b>B478-66</b>	<b>ALL machines</b>
<b>B70617</b>	<b>All machines produced BEFORE: K3150900300</b>
<b>B70626</b>	<b>All machines produced BEFORE: 5C31050001</b>
<b>B70637</b>	<b>NONE of the machines (the new stay is already attached)</b>
<b>B70646</b>	<b>NONE of the machines (the new stay is already attached)</b>

- 11. Remove the old shaft from the gear.**



- 12. Remove the E-ring.**

- 13. Remove the pin.**

- 14. Insert the new shaft into the gear, using the E-ring and pin you removed in Steps 12 and 13.**

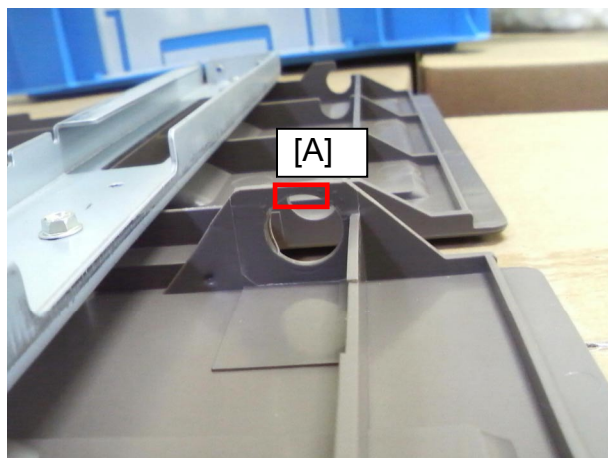
**Reissued:29-Sep-09**

Model: Model V-C1 Finisher (SR841)

Date: 23-Jul-06

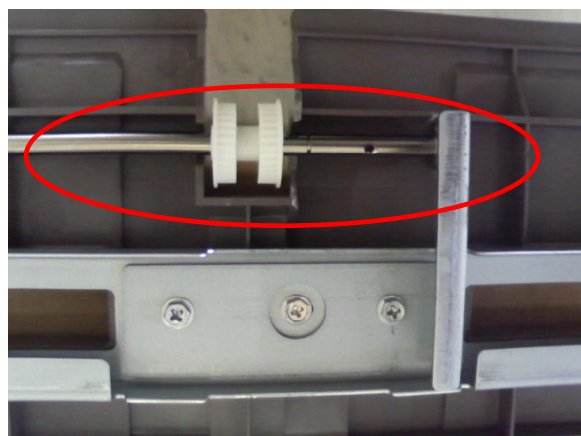
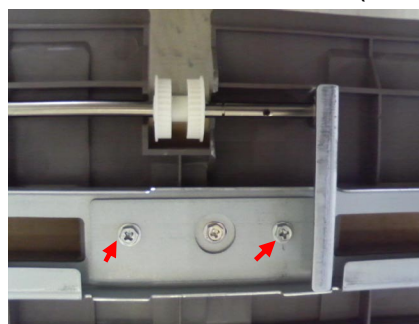
No.: RB706004b

15. Cut off the rib [A].



16. Attach the new bracket (P/N B8304784).

17. Attach the new shaft (bearing x 1, E-ring x 1).



18. Reattach all of the other parts you removed.

**Reissued:29-Sep-09**

Model: Model V-C1 Finisher (SR841)	Date: 23-Jul-06	No.: RB706004b
------------------------------------	-----------------	----------------

**At the factory:**

The following three “New parts” are used.

Old part number	New part number	Description	Q'ty	Int	Page	Index	Note
B4784713	B4784714	GUIDE PLATE:STAPLER TRAY	1	X/O	13	14	
	B8304783	BRACKET:EXIT:UPPER	1	X/O	15	40*	
B3024717	B7064785	SHAFT:EXIT:UPPER	1	as a set	15	20	

\* New index.

**Important:** If you install the new stapler tray (B4784714) in the field, also install the new bracket (B8304783) and shaft (B7064785) **together as a set.**

**Reissued:29-Sep-09**

Model: Model V-C1 Finisher (SR841)	Date: 23-Jul-06	No.: RB706004b
------------------------------------	-----------------	----------------

## **APPENDIX: REPLACING THE UPPER STAY**

**IMPORTANT:** Do this procedure only if the condition described in Step 10 above is met.

### **Parts information:**

Old part number	New part number	Description	Q'ty	Int	Page	Index	Note
	B8304783	BRACKET:EXIT:UPPER	1	X/O	15	40*	
B3024717	B7064785	SHAFT:EXIT:UPPER	1	As a	15	20	
B3024738	B4784738	STAY:STAPLER:UPPER	1	set	13	20	

### **Procedure:**

1. Remove the front cover (screws x 2) and left side inner cover (screw x 1).



2. Remove the inner cover (screws x 2).

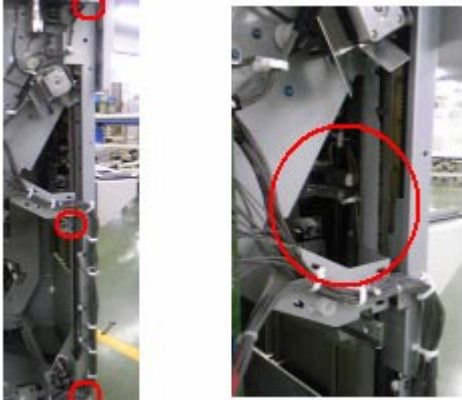


Reissued:29-Sep-09

Model: Model V-C1 Finisher (SR841)

Date: 23-Jul-06

No.: RB706004b

**3. Remove the bracket (screws x 3) and slide it out.****4. Move the tray down to its lowest position.****5. Remove the 4 screws for the end fence, and then tip the end fence so that you can access the connector inside.****6. Remove the connector.****7. Remove the screws for the upper stay (screws x 2 each side).**



**Reissued:29-Sep-09**

Model: Model V-C1 Finisher (SR841)

Date: 23-Jul-06

No.: RB706004b

**8. Remove the upper stay (screws x 3) and replace it with P/N B4784738.**



**9. Reattach all other parts you removed in this procedure.**

**10. Return to Step 10 in the main procedure.**

Reissued:16-Oct-09

Model: B-C2/V-C1 Finisher (SR841/SR842)	Date:8-Jul-09	No.: RB706002a
---	---------------	----------------

## RTB Reissue

The items in ***bold italics*** were corrected or added.

Subject: COVER: HARNESS: DOOR SWITCH		Prepared by: K.Yamamoto	
From: 2nd Tech. Support Sec. Service Support Dept.			
Classification:	<input type="checkbox"/> Troubleshooting <input type="checkbox"/> Mechanical <input type="checkbox"/> Paper path <input type="checkbox"/> Other (      )	<input checked="" type="checkbox"/> Part information <input type="checkbox"/> Electrical <input type="checkbox"/> Transmit/receive	<input type="checkbox"/> Action required <input type="checkbox"/> Service manual revision <input type="checkbox"/> Retrofit information

## 20. FRAME SECTION 1 (B706)

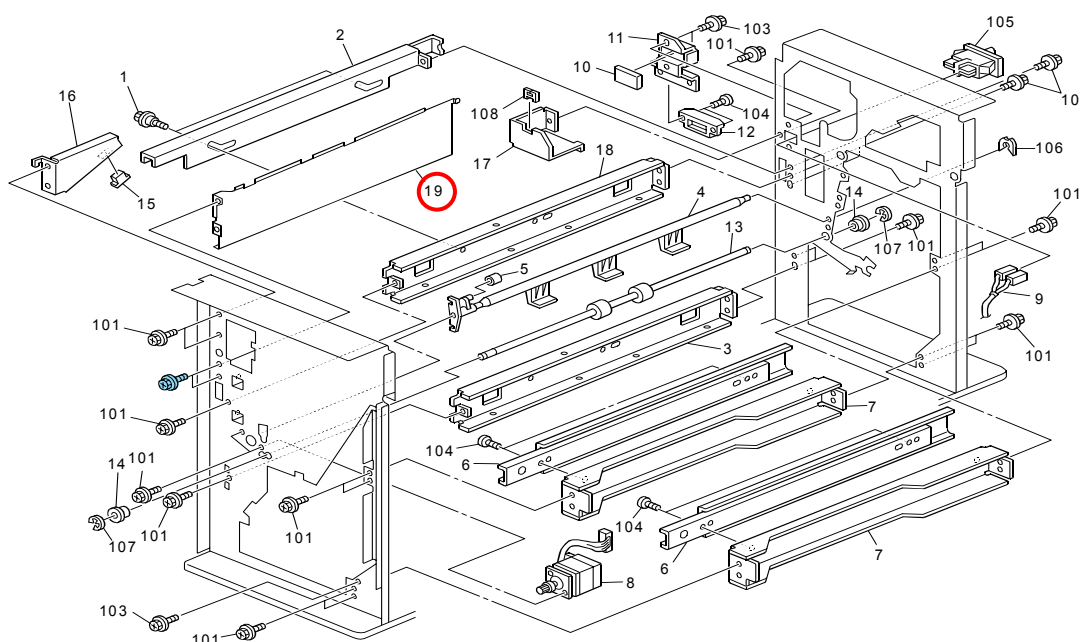
Old part number	New part number	Description	Q'ty	Int	Page	Index	Note
-	D4601146	COVER: HARNESS: DOOR SWITCH	0-1	-	45	19	New Index
-	04513006N	Tapping Screw - M3x6	0-2	-	45	101	-
<b><i>B4781137</i></b>	<b><i>D4601137</i></b>	<b><i>COVER:SAFETY SWITCH</i></b>	<b><i>1</i></b>	<b><i>X/O</i></b>	<b><i>45</i></b>		

### Change:

- 1) ***A cover for the door switch harness was added.***
- 2) ***In accordance with this change, a screw hole was added to the safety switch cover and a tapping screw added.***

***Reason: To further protect the harness from physical contact.***

***Important: The newly-added door switch harness cover (D4601146) cannot be installed on machines produced before the cut-in serial numbers. On these machines, be careful not to touch the harness when you service the machines.***



**Reissued:16-Oct-09**

Model: B-C2/V-C1 Finisher (SR841/SR842)	Date:8-Jul-09	No.: RB706002a
---	---------------	----------------

**Cut in Serial Numbers**

Model Name	Code	Serial Number
SR842	B706-37	K3190200070~
SR4050	D460-17	V6890400001~

Model: Model V-C1 Finisher (SR841)	Date: 31-Aug-09	No.: RB706005
------------------------------------	-----------------	---------------

Subject: Photo Reflection Sensor		Prepared by: K. Yamamoto	
From: 2nd Tech. Support Sec. Service Support Dept.			
Classification:	<input checked="" type="checkbox"/> Troubleshooting <input type="checkbox"/> Mechanical <input type="checkbox"/> Paper path <input type="checkbox"/> Other (      )	<input checked="" type="checkbox"/> Part information <input type="checkbox"/> Electrical <input type="checkbox"/> Transmit/receive	<input type="checkbox"/> Action required <input type="checkbox"/> Service manual revision <input type="checkbox"/> Retrofit information

Old part number	New part number	Description	Q'ty	Int	Page	Index	Note
AW010091	AW010129	PHOTO REFLECTION SENSOR	1	X/O As a set	29	14	
B7062246	D4602245	BRACKET:PHOTO REFLECTION SENSOR:OVERFLOW	1		29	16	
B7065730	D4605730	HARNESS:SENSOR:PROOF TRAY:CONNECTING	1		29	15	

**Change:** The shapes of the photo reflection sensor, sensor bracket, and sensor harness were changed.

**Reason:** To further increase detection accuracy.

Model: Model V-C1 Finisher (SR841)	Date: 21-Apr-10	No.: RB706006
------------------------------------	-----------------	---------------

Subject: Gathering bracket		Prepared by: K. Yamamoto	
From: 1st Overseas Tech Support Sec., 1st PQM Dept.			
Classification:	<input checked="" type="checkbox"/> Troubleshooting	<input checked="" type="checkbox"/> Part information	<input type="checkbox"/> Action required
	<input type="checkbox"/> Mechanical	<input type="checkbox"/> Electrical	<input type="checkbox"/> Service manual revision
	<input type="checkbox"/> Paper path	<input type="checkbox"/> Transmit/receive	<input type="checkbox"/> Retrofit information
	<input type="checkbox"/> Other (       )		

This RTB applies to the Victoria D and G

Old part number	New part number	Description	Q'ty	Int	Page	Index	Note
B3022124	D4602124	BRACKET:GATHERING ROLLER	1	X/O As a set	27	17	
B4782111	D4602111	ARM:GATHERING ROLLER:ASS'Y	1		27	23	

**Change:** The shapes of the bracket and arm were changed.

**Reason:** To improve the reliability of the bracket



Model: V-C1 Finisher (SR841)	Date: 01-Feb-11	No.: RB706007
------------------------------	-----------------	---------------

Subject: DC motor		Prepared by: Takeshi Toriumi	
From: 1st Overseas Tech Support Sec., 1st PQM Dept.			
Classification:	<input type="checkbox"/> Troubleshooting <input type="checkbox"/> Mechanical <input type="checkbox"/> Paper path <input type="checkbox"/> Product Safety	<input checked="" type="checkbox"/> Part information <input type="checkbox"/> Electrical <input type="checkbox"/> Transmit/receive <input type="checkbox"/> Other (     )	<input type="checkbox"/> Action required <input type="checkbox"/> Service manual revision <input type="checkbox"/> Retrofit information <input checked="" type="checkbox"/> Tier 2

## 14. PAPER EXIT SECTION 1 (B706)

Old part number	New part number	Description	Q'ty	Int	Page	Index	Note
	D4603011	DRIVE UNIT:UPPER LOWER:ASS'Y	1	X/O	31	29*	New Index
AX050277	AX050323	DC MOTOR:24V:9W	1	X/X	31	4	X/O
A6973130	D4603130	BRACKET:DRIVE:UPPER LOWER:ASS'Y	1	X/X	31	3	as a set

## 16. PAPER EXIT SECTION 3 (B706)

Old part number	New part number	Description	Q'ty	Int	Page	Index	Note
	D4603402	DRIVE SUB-UNIT:SHIFT:ASS'Y	1	X/O	33	25*	New Index
AX050277	AX050323	DC MOTOR:24V:9W	1	X/X	33	11	X/O
B3023212	D4603214	BRACKET:SHIFT:ASS'Y	1		33	10	as a set

**Change:** The shape of the DC motor was changed. In accordance with this, the shapes of the brackets were also changed.

**Reason:** To improve the reliability of the motor.

**Important:** When you install the new DC motor for the first time (AX050323), install the motor and bracket **together as a set**. To do this, order the assembly part (D4603402 or D4603011).

**Note:**

- The D4603402 assembly contains AX050323 (motor) and D4603214 (bracket).
- The D4603011 assembly contains AX050323 (motor) and D4603130 (bracket).