

Reissued: 22-Oct-04

Model: Russian-C2 500 Finisher (SR820)	Date: 12-Aug-02	No.: MB442001a
--	-----------------	----------------

MB Correction

The items in bold italics have been corrected or added.

Modified Article: Balancer		Prepared by: S. Tomoe	
From: 1st Tech. Support Sec. Service Support Dept.			
Reason for Modification:	<input checked="" type="checkbox"/> Parts catalog correction	<input type="checkbox"/> Vendor change	<input type="checkbox"/> To meet standards ()
	<input type="checkbox"/> To facilitate assembly	<input type="checkbox"/> To improve reliability	
	<input type="checkbox"/> Part standardization	<input type="checkbox"/> Other	

Please apply the following index number corrections to your Parts Catalogs:

Old index number	New index number	Part number	Description	Page	Note
40	41	G3143102	Balancer – Lever Paper Exit	9	
41	40	G3141125	Lower Plate – Left Ass'y Protection - Paddle	9	

Reissued: 9-Mar-04

Model: Russian-C2 500 Finisher (SR820)	Date: 12-Feb-04	No.: MB442002a
--	-----------------	----------------

MB Correction

The items in bold italics have been corrected or added.

Modified Article: Main Controller Board		Prepared by: S. Tomoe	
From: 1st Tech. Support Sec. Service Support Dept.			
Reason for Modification:	<input type="checkbox"/> Parts catalog correction	<input type="checkbox"/> Vendor change	<input type="checkbox"/> To meet standards ()
	<input type="checkbox"/> To facilitate assembly	<input type="checkbox"/> To improve reliability	
	<input type="checkbox"/> Part standardization	<input checked="" type="checkbox"/> Other	

The ROM on the main controller board has been changed to a Mask ROM.

Old part number	New part number	Description	Q'ty	Int	Page	Index	Note
B4420410	<i>B4420450</i>	Main Control Board Ass'y	1-1	O/O	13	14	

Model: Russian-C2 500-sheet Finisher (SR820)		Date: 12-Feb-04	No.: MB442003
Modified Article: Main control Board Ass'y		Prepared by: S. Tomoe	
From: 1st Tech. Support Sec. Service Support Dept.			
Reason for Modification:	<input type="checkbox"/> Parts catalog correction <input type="checkbox"/> To facilitate assembly <input type="checkbox"/> Part standardization	<input type="checkbox"/> Vendor change <input checked="" type="checkbox"/> To improve reliability <input type="checkbox"/> Other	<input type="checkbox"/> To meet standards ()

The finisher PCB software has been modified so that:

- The jam condition is not triggered when the paper is pulled out of the finisher before the job is completed.
- Stapling is cancelled if the paper is removed from the finisher before stapling is done.

In accordance with this, the following has been changed.

Old part number	New part number	Description	Q'ty	Int	Page	Index	Note
B4420450	B4580400	Main control Board Ass'y	1-1	X/O	13	14	

Japan Production

MODEL NAME	DESTINATION	CODE	SERIAL NO.
SR820	All RICOH subsidiaries, NRG, SAVIN	B442-17	J1830900106-13, 184, 204-218, 224-
SR820	Infotec	B442-26	4N61030001

Model: Russian-C2 500-sheet Finisher (SR820)		Date: 12-Feb-04	No.: MB442004
Modified Article: Main control Board Ass'y		Prepared by: S. Tomoe	
From: 1st Tech. Support Sec. Service Support Dept.			
Reason for Modification:	<input type="checkbox"/> Parts catalog correction <input type="checkbox"/> To facilitate assembly <input type="checkbox"/> Part standardization	<input checked="" type="checkbox"/> Vendor change <input type="checkbox"/> To improve reliability <input type="checkbox"/> Other	<input type="checkbox"/> To meet standards ()

The following has been changed due to a vendor change.

Old part number	New part number	Description	Q'ty	Int	Page	Index	Note
B4580400	B4420460	Main Control Board Ass'y	1-1	O/O	13	14	

Model: Russian-C2 500-sheet Finisher (SR820)		Date: 27-Apr-04	No.: MB442005
Modified Article: Holder Spring		Prepared by: Y. Ohtani	
From: 1st Tech. Support Sec. Service Support Dept.			
Reason for Modification:	<input checked="" type="checkbox"/> Parts catalog correction <input type="checkbox"/> To facilitate assembly <input type="checkbox"/> Part standardization	<input type="checkbox"/> Vendor change <input type="checkbox"/> To improve reliability <input type="checkbox"/> Other	<input type="checkbox"/> To meet standards ()

Please apply the following P/N correction to your Parts Catalogues.

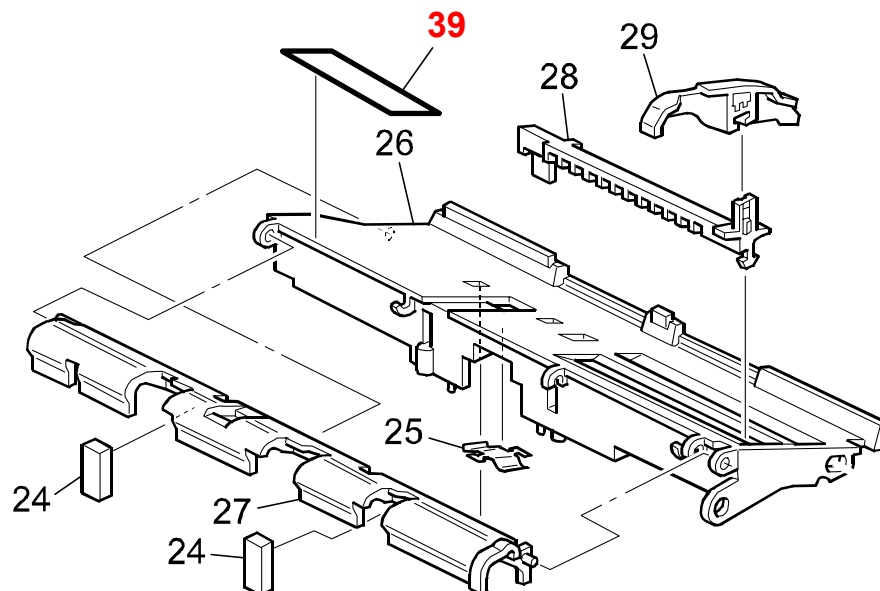
Incorrect part number	Correct part number	Description	Q'ty	Int	Page	Index	Note
G302 1120	G302 1114	Holder Spring	1-1		9	18	

Model: Russian-C2 500-sheet Finisher (SR820)		Date: 20-May-08	No.: MB442006
Modified Article: Tray Seal		Prepared by: S Tomoe	
From: 2nd Tech. Support Sec. Service Support Dept.			
Reason for Modification:	<input type="checkbox"/> Parts catalog correction <input type="checkbox"/> To facilitate assembly <input type="checkbox"/> Part standardization	<input type="checkbox"/> Vendor change <input type="checkbox"/> To improve reliability <input checked="" type="checkbox"/> Other	<input type="checkbox"/> To meet standards ()

Change: This part was newly added as a service part.

Reason: To meet requests from the field.

Old part number	New part number	Description	Q'ty	Int	Page	Index	Note
	G3141186	Seal: Front: Tray	0-1		11	39	





Part Change Information List

Date: May 31, 2010

Model	Code	PCIL Nr.	PCIL Correction	Old part number	New part number	Description	Old Q'ty	New Q'ty	Int	3DPC	Page	Index	Set	Set Int	RTB	Note	Ref. Nr.	ECN Nr.
R-C2 Finisher SR820	B442	201005		G3021041	B4581041	BRACKET - PAPER EXIT UNIT	1	1	X/O		9	11					T0602540	6061289