

Reissued: 2-Apr-04

Model: Adonis-C3 Tray Finisher (SR880)	Date: 25-Dec-03	No.: MB545001a
--	-----------------	----------------

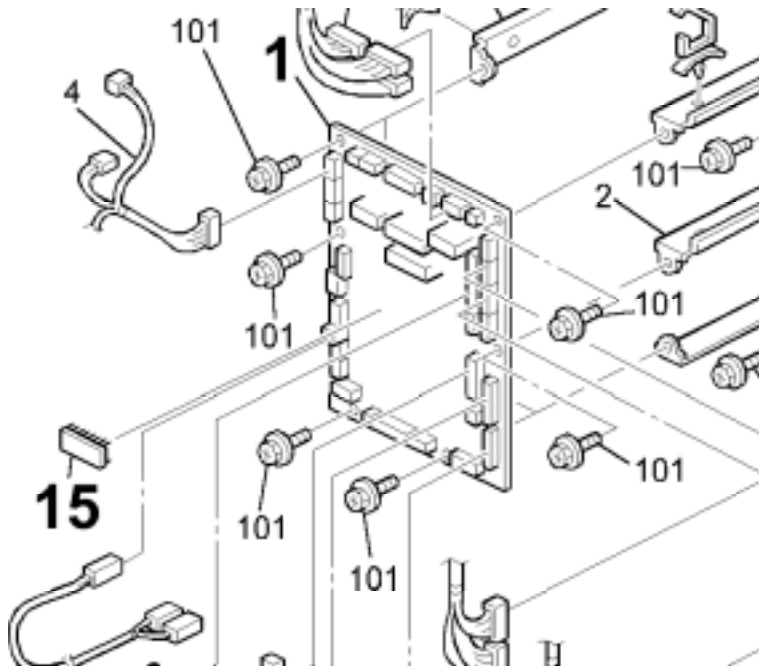
## MB Correction

The items in bold italics have been corrected or added.

Modified Article: PCB:Main Control		Prepared by: K.Takagi	
From: 1st Tech. Support Sec. Service Support Dept.			
Reason for Modification:	<input type="checkbox"/> Parts catalog correction	<input type="checkbox"/> Vendor change	<input type="checkbox"/> To meet standards ( )
	<input type="checkbox"/> To facilitate assembly	<input checked="" type="checkbox"/> To improve reliability	
	<input type="checkbox"/> Part standardization	<input type="checkbox"/> Other	

The following has been changed to further improve the accuracy of the staple tray mechanism.

Old part number	New part number	Description	Q'ty	Int	Page	Index	Note
B5455100	B5455110	PCB:Main Control	1-1	X/O	39	1	
<b><i>B5455103</i></b>	<b><i>B5455120</i></b>	<b><i>EPROM:Main Control</i></b>	<b><i>1-1</i></b>	<b><i>X/O</i></b>	<b><i>39</i></b>	<b><i>15</i></b>	



## RCL (Japan) Production

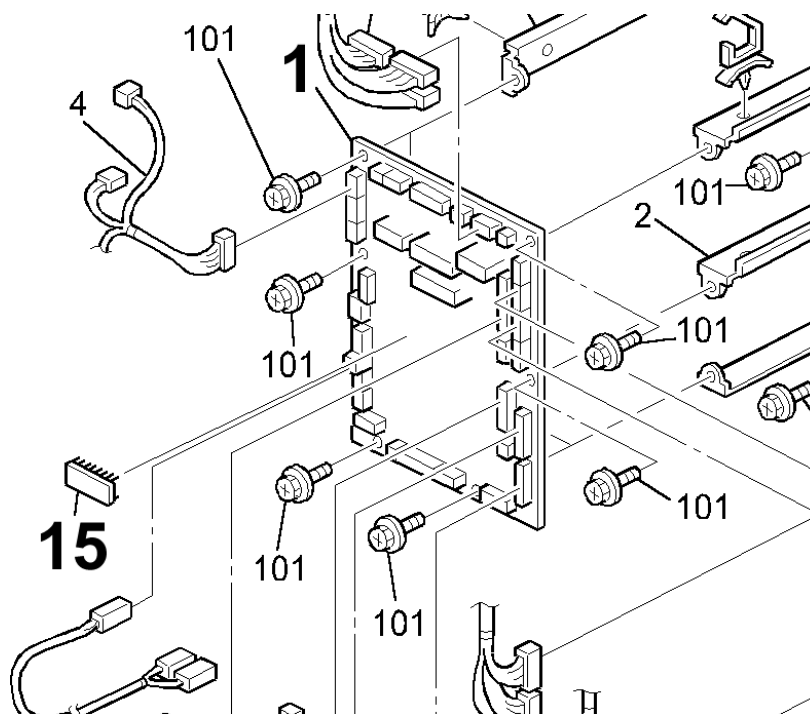
Model Name	Destination	Code	Serial Number
SR 880	USA, Europe, Asia	B545-17	J6531100001
	Europe	B545-26	J65312xxxxx

Model: Adonis-C3 Tray Finisher (SR880)		Date: 25-Apr-07	No.: MB545002
Modified Article: PCB: Main Control		Prepared by: K. Takagi	
From: 1st Tech. Support Sec. Service Support Dept.			
Reason for Modification:	<input type="checkbox"/> Parts catalog correction <input type="checkbox"/> Vendor change <input type="checkbox"/> Other <input type="checkbox"/> To facilitate assembly <input checked="" type="checkbox"/> To improve reliability <input type="checkbox"/> To meet standards <input type="checkbox"/> Part standardization <input type="checkbox"/> Product Safety    (    )		

The software of the main control board has been changed to fix the following software bugs.

- Jam 28 occurs when the machine recovers from Energy Saver mode.
- A jam occurs near the finisher staple tray.

Old part number	New part number	Description	Q'ty	Int	Page	Index	Note
B5455110	B5455160	PCB:Main Control	1-1	X/O	39	1	
B5455120	B5455123	EPROM:Main Control	1-1	X/O	39	15	



## RCL (Japan) Production

Model Name	Destination	Code	Serial Number
SR 880	USA, Europe, Asia	B545-17	J65ymmxxxxx

Model: Adonis-C3 2 Tray Finisher (SR880)		Date: 28-May-07	No.: MB545003
Modified Article: Shift Tray		Prepared by: K.Takagi	
From: 1st Tech. Support Sec. Service Support Dept.			
Reason for Modification:	<input type="checkbox"/> Parts catalog correction <input type="checkbox"/> Vendor change <input type="checkbox"/> Other <input type="checkbox"/> To facilitate assembly <input checked="" type="checkbox"/> To improve reliability <input type="checkbox"/> To meet standards <input type="checkbox"/> Part standardization <input type="checkbox"/> Product Safety    (      )		

Old part number	New part number	Description	Q'ty	Int	Page	Index	Note
B3523911	B3523912	Shift Tray	1-1	X/X	7	18	
B3523840	G5653840	Lower Tray Holder	1-1	X/O	33	1	

**Change:** The shapes of the parts in the table were changed.

**Reason:** To increase the durability of the sub tray.

**Important:** When you install these parts for the first time, replace them **together as a set**.

#### RCL (Japan) Production

Model Name	Destination	Code	Serial Number
SR 880	USA, Europe, Asia	B545-11	J6550800001

Model: Adonis-C3 2 Tray Finisher (SR880)		Date: 14-Feb-08	No.: MB545004
Modified Article: Lower Transport Roller		Prepared by: K.Takagi	
From: 1st Tech. Support Sec. Service Support Dept.			
Reason for Modification:	<input type="checkbox"/> Parts catalog correction <input type="checkbox"/> Vendor change <input type="checkbox"/> Other <input type="checkbox"/> To facilitate assembly <input type="checkbox"/> To improve reliability <input checked="" type="checkbox"/> To meet standards (RoHS) <input type="checkbox"/> Part standardization <input type="checkbox"/> Product Safety		

Old part number	New part number	Description	Q'ty	Int	Page	Index	Note
B3522620	B7044121	Lower Transport Roller	1-1	X/O	11 15	8 8	

**Change:** The materials of these parts were changed.

**Reason:** RoHS compliance

Model: Adonis-C3 2 Tray Finisher (SR880)		Date: 14-Feb-08	No.: MB545005
Modified Article: PCB: Main Control		Prepared by: K. Takagi	
From: 1st Tech. Support Sec. Service Support Dept.			
Reason for Modification:	<input type="checkbox"/> Parts catalog correction <input type="checkbox"/> Vendor change <input type="checkbox"/> Other <input type="checkbox"/> To facilitate assembly <input checked="" type="checkbox"/> To improve reliability <input type="checkbox"/> To meet standards <input type="checkbox"/> Part standardization <input type="checkbox"/> Product Safety    (     )		

The software of the main control board has been changed to fix the following software bugs.

- SC620 is displayed when a stapling job is attempted with a paper size that is not supported by the stapling function.  
Conditions: A stapling job was performed just before this using a paper size that is supported by the stapling function (A4 LEF, LT LEF, B5 LEF).

Old part number	New part number	Description	Q'ty	Int	Page	Index	Note
B5455160	B5455165	PCB:Main Control	1-1	X/O	39	1	
B5455123	B5455124	EPROM:Main Control	1-1	X/O	39	15	

Model: Adonis-C3 2 Tray Finisher (SR880)		Date: 24-Feb-09	No.: MB545006
Modified Article: Caster		Prepared by: S. Tomoe	
From: 2nd Tech. Support Sec. Service Support Dept.			
Reason for Modification:	<input type="checkbox"/> Parts catalog correction <input checked="" type="checkbox"/> Vendor change <input type="checkbox"/> Other <input type="checkbox"/> To facilitate assembly <input type="checkbox"/> To improve reliability <input type="checkbox"/> To meet standards <input type="checkbox"/> Part standardization <input type="checkbox"/> Product Safety    (      )		

Old part number	New part number	Description	Q'ty	Int	Page	Index	Note
B5452019	B8041035	Caster:DIA50:400N	2-2	O/O	21	4	

**Change/ Reason:** Vendor change



Part Change Information List

Date: March 18, 2009

Model	Code	PCIL Number	PCIL Correction	Old part number	New part number	Description	Old Q'ty	New Q'ty	Int	3DPC	Page	Index	Set	Set Int	RTB	Note	Ref Number
Adonis-C3 2 Tray Finisher (SR880)	B545	200903		A6973205	D4603205	BRACKET:PHOTOINTERRUPTOR:SHIFT	1	1	O/O		35	17					V0803530
Adonis-C3 2 Tray Finisher (SR880)	B545	200903		B5452500	B5452502	GUIDE PLATE:AUXILIARY:PUNCH:ASS'Y	1	1	X/O		11	7					V0804293



Part Change Information List

Date: August 31, 2009

Model	Code	PCIL Nr.	PCIL Correction	Old part number	New part number	Description	Old Q'ty	New Q'ty	Int	3DPC	Page	Index	Set	Set Int	RTB	Note	Ref. Nr.	ECN Nr.
A-C3 2 Tray Finisher (SR880)	B545	200908		12042384	12042848	SWITCH:FA1L-AJAE	1	1	X/O		17	102					V0901516	9050233