

Model: Adonis-C2 SR760		Date: 28-Jun-01	No.: MB352001
Modified Article: Caster		Prepared by: E. Fukuyama	
From: Technical Services Dept., GTS Division			
Reason for Modification:	<input checked="" type="checkbox"/> Parts catalog correction <input type="checkbox"/> To facilitate assembly <input type="checkbox"/> Part standardization	<input type="checkbox"/> Vendor change <input type="checkbox"/> To improve reliability <input type="checkbox"/> Other	<input type="checkbox"/> To meet standards (      )

The following should be corrected. Please correct your parts catalog.

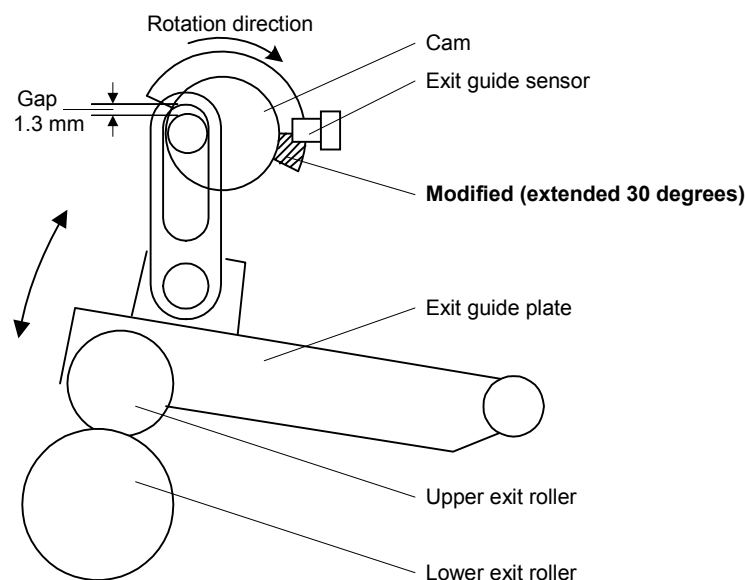
Old part number	New part number	Description	Q'ty	Page	Index
B3521130	G5651140	Caster	1-2	21	6

Model: Adonis-C2 SR760		Date: 30-Aug-01	No.: MB352002
Modified Article: Cam - Paper Exit Unit		Prepared by: E. Fukuyama	
From: Technical Services Dept., GTS Division			
Reason for Modification:	<input type="checkbox"/> Parts catalog correction <input type="checkbox"/> To facilitate assembly <input type="checkbox"/> Part standardization	<input type="checkbox"/> Vendor change <input checked="" type="checkbox"/> To improve reliability <input type="checkbox"/> Other	<input type="checkbox"/> To meet standards ( )

When the Paper Exit Unit cam returns to its home position, there is normally a gap of 1.3 mm between the cam pin and the top of the Driven Roller Link, as shown below. However this gap can close if the cam runs past home position, which can lift the link further and change the position of the Exit Guide Plate.

This decreases the Exit Roller pressure, which can lead to paper jams and/or paper skew. To ensure that the Exit Guide Plate is always stopped at the proper position, the length of the cam's sensor cover has been increased to make the cam stop earlier.

Old part number	New part number	Description	Q'ty	Page	Index
B3523175	B3523176	Left Guide Plate - Middle	1-1	35	4



Model: Adonis-C2 SR760

Date: 30-Aug-01

No.: MB352002

**RCL (Japan) Production**

Model Name	V/Hz	Destination	Code	Serial Number
SR 760	115V/50 Hz 230V/60 Hz	USA, Canada, Europe, Asia	B352-14	L0831060501
	115V/50 Hz 230V/60 Hz	USA, Canada, Europe, Asia, Taiwan, China, etc	B352-17	H7710601503
	230V/60 Hz	Europe	B352-26	4J10710001

Model: Adonis-C2 SR760		Date: 30-Aug-01	No.: MB352003
Modified Article: Base-Lower Tray and Side Plates		Prepared by: E. Fukuyama	
From: Technical Services Dept., GTS Division			
Reason for Modification:	<input type="checkbox"/> Parts catalog correction <input type="checkbox"/> To facilitate assembly <input type="checkbox"/> Part standardization	<input type="checkbox"/> Vendor change <input checked="" type="checkbox"/> To improve reliability <input type="checkbox"/> Other	<input type="checkbox"/> To meet standards (      )

Although the loading capacity of the Lower Tray is 750 sheets according to the specifications, there are cases where customers load up to 1500 sheets into the tray, causing the Side Plate to deform from stress. When the Upper Tray is then selected in this condition, the Lower Tray's Side Plate catches on the overflow sensor, damaging the sensor.

To ensure that the Side Plate does not deform even under such conditions, the following parts have been further strengthened.

Old part number	New part number	Description	Q'ty	Int	Page	Index
B3523810	B3523812	Side Plate – Lower Front	1-1	O/O	33	13
B3523820	B3523822	Side Plate – Lower Tray	1-1	O/O	33	16
B3523831	B3523830	Base – Lower Tray	1-1	O/O	33	18

## RCL (Japan) Production

Model Name	V/Hz	Destination	Code	Serial Number
SR 760	115V/50 Hz 230V/60 Hz	USA, Canada, Europe, Asia, Taiwan, China, etc	B352-14	L0831080120
	115V/50 Hz 230V/60 Hz	USA, Canada, Europe, Asia, Taiwan, China, etc	B352-17	H7710800001
	230V/60 Hz	Europe	B352-26	4H10810001

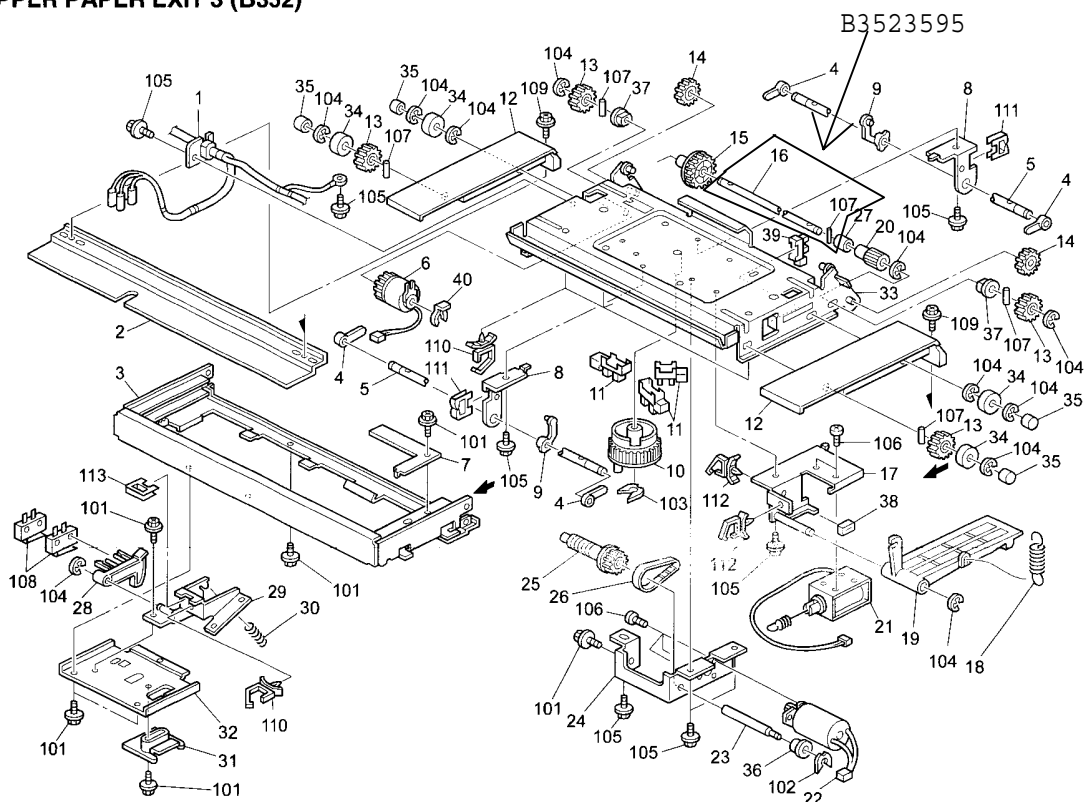
Model: Adonis-C2 SR760		Date: 05-Oct-01	No.: MB352004
Modified Article: Rear Shaft - Upper Tray		Prepared by: E. Fukuyama	
From: Technical Services Dept., GTS Division			
Reason for Modification:	<input type="checkbox"/> Parts catalog correction <input checked="" type="checkbox"/> To facilitate assembly <input type="checkbox"/> Part standardization	<input type="checkbox"/> Vendor change <input type="checkbox"/> To improve reliability <input type="checkbox"/> Other	<input type="checkbox"/> To meet standards (      )

To facilitate factory assembly of the Rear Shaft (Torque Limiter), the diameter of its Parallel Pin has been expanded. This will ensure a more solid fit and prevent the pin from falling out. As a result, the new Rear Shaft in the table below includes the Parallel Pin.

**Note:** The Parallel Pin is still used as an independent service part in the other sections of the machine, and has only been changed/combined in this one area (see the illustration below).

Old part number	New part number	Description	Q'ty	Int	Page	Index	Note
B3523590	B3523595	Rear Shaft – Upper Tray	1-1	X/O	29	16	

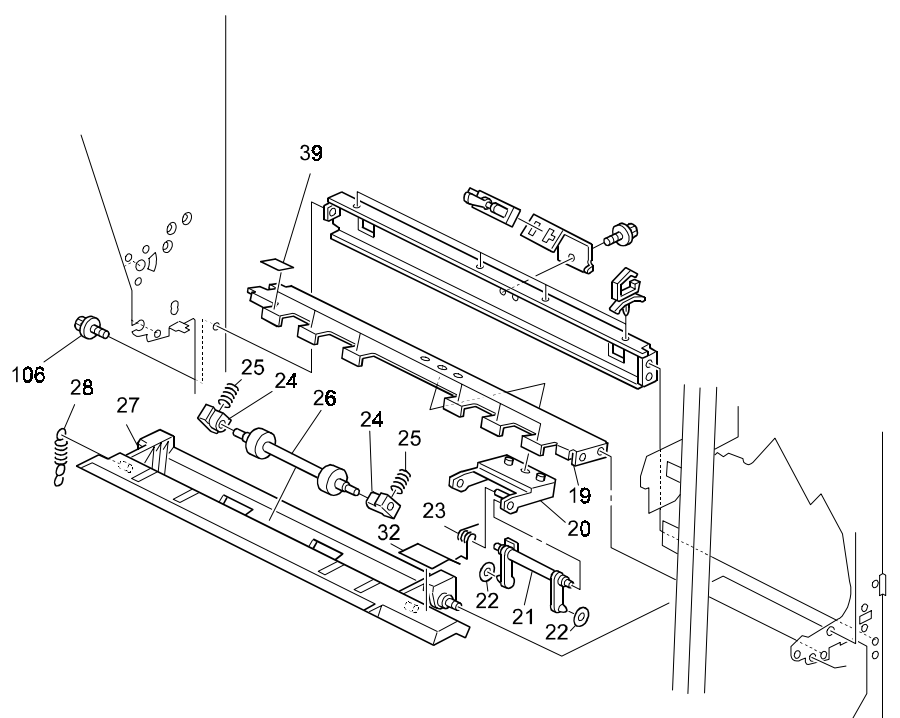
## 12. UPPER PAPER EXIT 3 (B352)



Model: Adonis-C2 SR760		Date: 05-Dec-01	No.: MB352005
Modified Article: Parts Catalog Correction		Prepared by: S. Tomoe	
From: Technical Services Dept., GTS Division			
Reason for Modification:	<input checked="" type="checkbox"/> Parts catalog correction	<input type="checkbox"/> Vendor change	<input type="checkbox"/> To meet standards ( )
	<input type="checkbox"/> To facilitate assembly	<input type="checkbox"/> To improve reliability	
	<input type="checkbox"/> Part standardization	<input type="checkbox"/> Other	

Please apply the following P/N corrections to your Parts Catalogs:

Old part number	New part number	Description	Q'ty	Int	Page	Index	Note
B3525500	B3525520	Main Control Board	1-1		39	1	
50530447	G8003089	Bushing – 6mm	1-1		11	20	
B3522220	G5652221	Stay - Guide Holder	1-1		17	19	Fig 1
	G5652222	Mylar – Guide Holder	0-6		17	39	Fig 1



Model: SR760		Date: 20-Mar-02	No.: MB352006
Modified Article: Main Control Board		Prepared by: S. Tomoe	
From: Technical Services Dept., GTS Division			
Reason for Modification:	<input type="checkbox"/> Parts catalog correction <input type="checkbox"/> To facilitate assembly <input type="checkbox"/> Part standardization	<input type="checkbox"/> Vendor change <input checked="" type="checkbox"/> To improve reliability <input type="checkbox"/> Other	<input type="checkbox"/> To meet standards (      )

To improve the reliability of the motor driver on the main control board, the capacitor has been changed.

Old part number	New part number	Description	Q'ty	Int	Page	Index	Note
B3525520	B3525530	Main Control Board	1-1	X/0	39	1	

**RCL (Japan) Production**

Model Name	Destination	Code	Serial Number
SR 760	USA, Europe, Asia	B352-14	L0832030001
	USA, Europe, Asia	B352-17	H7720200386
	Europe	B352-26	4J10320001

Model: Adonis-C2 SR760		Date: 28-May-07	No.: MB352007
Modified Article: Shift Tray		Prepared by: K. Takagi	
From: 1st Tech. Support Sec. Service Support Dept.			
Reason for Modification:	<input type="checkbox"/> Parts catalog correction <input type="checkbox"/> Vendor change <input type="checkbox"/> Other <input type="checkbox"/> To facilitate assembly <input checked="" type="checkbox"/> To improve reliability <input type="checkbox"/> To meet standards <input type="checkbox"/> Part standardization <input type="checkbox"/> Product Safety    (      )		

Old part number	New part number	Description	Q'ty	Int	Page	Index	Note
B3523911	B3523912	Shift Tray	1-1	X/X	7	18	
B3523840	G5653840	Lower Tray Holder	1-1	X/O	33	1	

**Change:** The shapes of the parts in the table were changed.

**Reason:** To increase the durability of the sub tray.

**Important:** When you install these parts for the first time, replace them **together as a set**.



Model: Adonis-C2 SR760		Date: 23-Feb-09	No.: MB352008
Modified Article: Caster		Prepared by: S. Tomoe	
From: 2nd Tech. Support Sec. Service Support Dept.			
Reason for Modification:	<input type="checkbox"/> Parts catalog correction <input checked="" type="checkbox"/> Vendor change <input type="checkbox"/> Other <input type="checkbox"/> To facilitate assembly <input type="checkbox"/> To improve reliability <input type="checkbox"/> To meet standards <input type="checkbox"/> Part standardization <input type="checkbox"/> Product Safety    (     )		

The software of control board has been changed to fix minor software bug.

Old part number	New part number	Description	Q'ty	Int	Page	Index	Note
AH012019	B8041035	Caster:DIA50:400N	2-2	O/O	21	4	

**Change/ Reason:** Vendor change



Part Change Information List

Date: August 31, 2009

Model	Code	PCIL Nr.	PCIL Correction	Old part number	New part number	Description	Old Q'ty	New Q'ty	Int	3DPC	Page	Index	Set	Set Int	RTB	Note	Ref. Nr.	ECN Nr.
A-C2 SR760	B352	200908		12042384	12042848	SWITCH:FA1L-AJAE	1	1	X/O		17	102					V0901516	9050233



Part Change Information List

Date: September 30, 2009

Model	Code	PCIL Nr.	PCIL Correction	Old part number	New part number	Description	Old Q'ty	New Q'ty	Int	3DPC	Page	Index	Set	Set Int	RTB	Note	Ref. Nr.	ECN Nr.
A-C2 SR760	B352	200909		B5452500	B5452502	GUIDE PLATE:AUXILIARY:PUNCH:ASS'Y	1	1	X/O		11	7					V0902196	