

Reissued: 27-Jul-00

Model: Mojito Finisher SR740	Date: 06-Jun-00	No.: MB312001a
------------------------------	-----------------	----------------

MB Correction

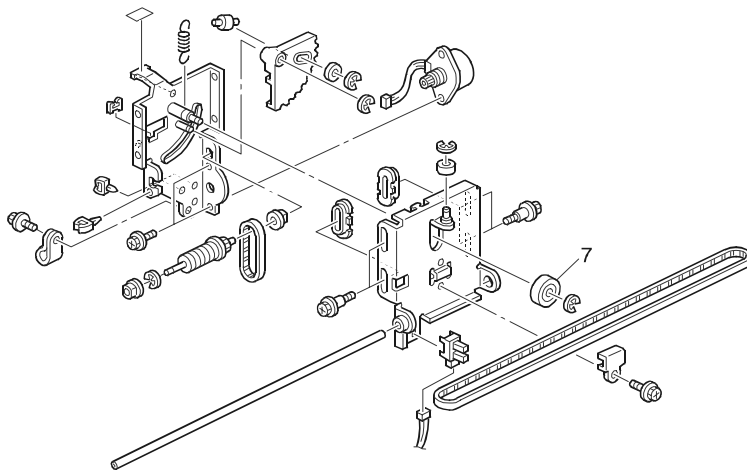
The items in bold italics have been corrected or added.

Modified Article: Ball Bearing		Prepared by: M. Tsuyuki	
From: Technical Services Dept., GTS Division			
Reason for Modification:	<input type="checkbox"/> Parts catalog correction <input checked="" type="checkbox"/> To facilitate assembly <input type="checkbox"/> Part standardization	<input checked="" type="checkbox"/> Vendor change <input type="checkbox"/> To improve reliability <input type="checkbox"/> Other	<input type="checkbox"/> To meet standards ()

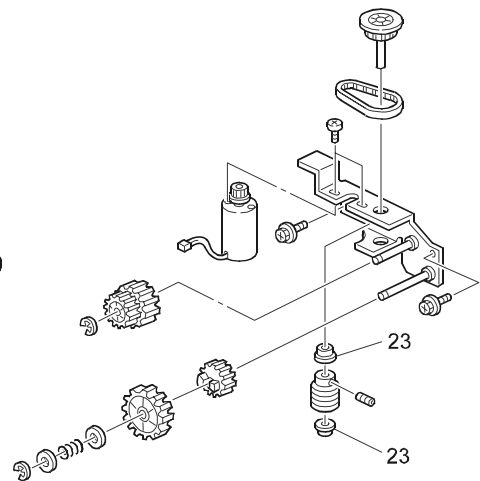
Old part number	New part number	Description	Q'ty	Int	Page	Index	Note
A2323552	<i>07403008</i>	Ball Bearing – 8x22x7	1	O/O	19	7	
A2323562	<i>07413506</i>	Ball Bearing – 6x12x4mm	2	O/O	31	23	

The vendors of the ball bearings have been changed.

7. Stapler Unit



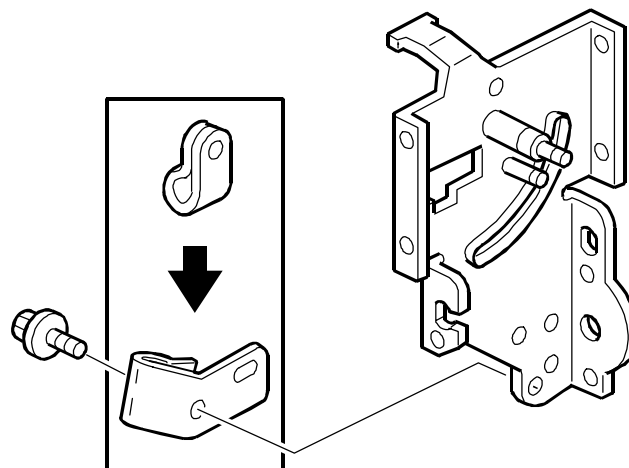
13. Drive Section



Model: Mojito Finisher SR740		Date: 30-Aug-01	No.: MB312002
Modified Article: Harness Clamp		Prepared by: F. Noguchi	
From: Technical Services Dept., GTS Division			
Reason for Modification:	<input type="checkbox"/> Parts catalog correction <input type="checkbox"/> To facilitate assembly <input type="checkbox"/> Part standardization	<input type="checkbox"/> Vendor change <input checked="" type="checkbox"/> To improve reliability <input type="checkbox"/> Other	<input type="checkbox"/> To meet standards ()

The shape of the clamp for the stapler harness has been changed as shown below to ensure proper orientation of the harness.

Old part number	New part number	Description	Q'ty	Int	Page	Index	Note
11050062		Nylon Clamp – 6n	n - n-1	X/O	19	104	
	B3124160	Harness Clamp	0 - 1			*43	



RCL (Japan) Production

MODEL NAME	BRAND	DESTINATION	CODE	SERIAL NO.
SR740	Lanier	All	B312-14	L0730110001
SR740	Ricoh Savin Gestetner nashuatec Rex Rotary	All	B312-17	H4901100001
SR740	infotec	All	B312-26	4D71100001

Model: Mojito Finisher SR740		Date: 30-Aug-01	No.: MB312003
Modified Article: Tightener		Prepared by: F. Noguchi	
From: Technical Service Dept., GTS Division			
Reason for Modification:	<input type="checkbox"/> Parts catalog correction <input type="checkbox"/> To facilitate assembly <input type="checkbox"/> Part standardization	<input type="checkbox"/> Vendor change <input checked="" type="checkbox"/> To improve reliability <input type="checkbox"/> Other	<input type="checkbox"/> To meet standards ()

To prevent noise from the shaft of the tightener, a bearing has been inserted between the shaft and the pulley.

Old part number	New part number	Description	Q'ty	Int	Page	Index	Note
A6971625	B3121600	Tightener	1	X/O	31	8	
A6971601	B3121610	Tightener	1	X/O	31	9	

RCL (Japan) Production

MODEL NAME	BRAND	DESTINATION	CODE	SERIAL NO.
SR740	Lanier	All	B312-14	L0731020203
SR740	Ricoh Savin Gestetner nashuatec Rex Rotary	All	B312-17	H4910200001
SR740	infotec	All	B312-26	4D70210001

Model: Mojito Finisher SR740		Date: 30-Aug-01	No.: MB312004
Modified Article: Rear Side Fence - Sfit Tray		Prepared by: F. Noguchi	
From: Technical Services Dept., GTS Division			
Reason for Modification:	<input type="checkbox"/> Parts catalog correction <input type="checkbox"/> To facilitate assembly <input type="checkbox"/> Part standardization	<input type="checkbox"/> Vendor change <input checked="" type="checkbox"/> To improve reliability <input type="checkbox"/> Other	<input type="checkbox"/> To meet standards ()

Old part number	New part number	Description	Q'ty	Int	Page	Index	Note
B3124100	B3124101	Rear Side Fence – Shift Tray	1	X/O	17	16	

If the Staple Tray Unit is pulled out with the Staple Tray Upper Entrance Guide (A6972130) already opened, the hook (rear) of the Upper Entrance Guide spring can contact the Staple Tray Rear Side Fence (B3124100), which can cause damage to the Upper Entrance Guide.

The shape of the Staple Tray Rear Side Fence has been changed so that the 2 parts do not contact one another, even under the above conditions.

RCL (Japan) Production

MODEL NAME	BRAND	DESTINATION	CODE	SERIAL NO.
SR740	Lanier	All	B312-14	L0731010001
SR740	Ricoh Savin Gestetner nashuatec Rex Rotary	All	B312-17	H4910100001
SR740	infotec	All	B312-26	4D70110001

Reissued: 25-Mar-03

Model: Mojito-C1/C2 Finisher SR740/SR870	Date: 26-Feb-03	No.: MB312006
--	-----------------	----------------------

MB Number Correction

The bulletin number has been corrected from MB312005→MB312006.

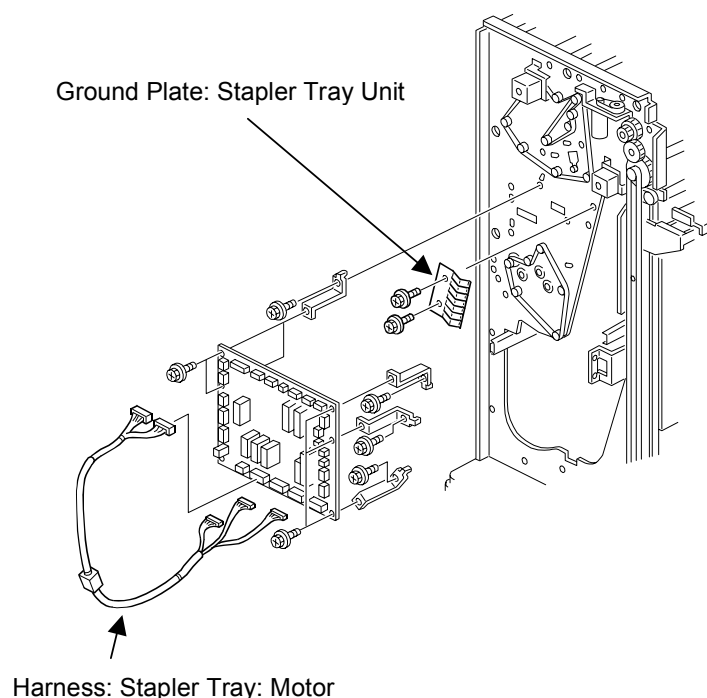
MB312005 (30-Oct-02) was issued mistakenly, so please delete it.

Modified Article: Motor Harness etc. (SR870 only)		Prepared by: F.Noguchi	
From: Technical Services Sec. Service Planning Dept.			
Reason for Modification:	<input type="checkbox"/> Parts catalog correction	<input type="checkbox"/> Vendor change	<input type="checkbox"/> To meet standards ()
	<input type="checkbox"/> To facilitate assembly	<input checked="" type="checkbox"/> To improve reliability	
	<input type="checkbox"/> Part standardization	<input type="checkbox"/> Other	

To further minimize the effect of electrical noise, the following parts have been added to the stapler tray.

- 1) Ground Plate
- 2) Ferrite Core (added to the motor harness)

Old part number	New part number	Description	Q'ty	Int	Page	Index	Note
	B5861165	Ground Plate: Stapler Tray Unit	0 - 1		33		
B3125304		Motor harness – Stapler Tray	1 - 1	X/O	33	2	
	B5865306	Harness: Stapler Tray: Motor					
04513006B		Tapping Screw - M3x6	n – n+2		33	105	



Reissued: 25-Mar-03

Model: Mojito-C1/C2 Finisher SR740/SR870

Date: 26-Feb-03

No.: **MB312006****RCL (Japan) Production**

MODEL NAME	BRAND	DESTINATION	CODE	SERIAL NO.
SR740	Lanier	All	B312-14	
SR740	Ricoh Savin Gestetner nashuatec Rex Rotary	All	B312-17	
SR740	infotec	All	B312-26	
SR870	Ricoh Savin Gestetner nashuatec Rex Rotary Lanier	All	B586-17	J5630100001
SR870	infotec	Europe	B586-26	2Q60130001

Model: Mojito-C1/C2 Finisher SR740/SR870		Date: 24-Dec-04	No.: MB312007
Modified Article: Stepping Motor		Prepared by: F.Noguchi	
From: 2nd Tech. Support Sec. Service Support Dept.			
Reason for Modification:	<input type="checkbox"/> Parts catalog correction <input type="checkbox"/> To facilitate assembly <input type="checkbox"/> Part standardization	<input type="checkbox"/> Vendor change <input type="checkbox"/> To improve reliability <input checked="" type="checkbox"/> Other	<input type="checkbox"/> To meet standards ()

Old part number	New part number	Description	Q'ty	Int	Page	Index	Note
AX040122		Stepping Motor – 7.5W	1	O/O	19	30	
	AX040209	Stepper Motor: DC 7.5W					
B3121550		Stepping Motor- DC 6.2W	1	X/O	31	25	
	B5455515	Stepper Motor: EXIT: DC 6.72W					

Change: The material was changed to a more environmentally friendly type.

Reason: Part of Ricoh's ongoing application of in-house environmental management standards

Model: Mojito-C1/C2 Finisher SR740/SR870		Date: 24-Dec-04	No.: MB312008
Modified Article: Photointerruptor		Prepared by: F.Noguchi	
From: 2nd Tech. Support Sec. Service Support Dept.			
Reason for Modification:	<input type="checkbox"/> Parts catalog correction <input type="checkbox"/> To facilitate assembly <input checked="" type="checkbox"/> Part standardization	<input type="checkbox"/> Vendor change <input type="checkbox"/> To improve reliability <input checked="" type="checkbox"/> Other	<input type="checkbox"/> To meet standards ()

Old part number	New part number	Description	Q'ty	Int	Page	Index	Note
AW010079		Photointerruptor	1	O/O	21	11	
	AW020172	Photointerruptor: Overflow: CT					

Change: The material was changed to a more environmentally friendly type.

Reason: Part of Ricoh's ongoing application of in-house environmental management standards