

Reissued: 09-May-00

Model: AD50 Finisher	Date: 15-Sep-97	No.: MA612001a
----------------------	-----------------	----------------

## MB Correction

The items in bold italics have been corrected or added.

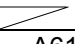

Modified Article: New Product Information		Prepared by: S. Tomoe	
From: Technical Services Dept., GTS Division			
Reason for Modification:	<input type="checkbox"/> Parts catalog correction <input type="checkbox"/> To facilitate assembly <input type="checkbox"/> Part standardization	<input type="checkbox"/> Vendor change <input type="checkbox"/> To improve reliability <input checked="" type="checkbox"/> Other	<input type="checkbox"/> To meet standards (      )

The new finisher, SR710, is one of options for the AD50 (A217) and will be launched from this November (refer to RTB # 1 for more details). This MB contains parts information for the new SR710. Please add these to your SR700 (A612) the Parts Catalog.

1. The following parts are not used for SR710, but they are still used for SR700.

Old part number	New part number	Description	Qty	Int	Page	Index	Note
A6665455		Grounding Plate (SR700)	1 → 0		7	21	
A6125955		Grounding Plate - Bank (SR700)	1 → 0		7	22	

2. The following parts will be changed.

Old part number	New part number	Description	Qty	Int	Page	Index	Note
	A6125120	Main Control Board (SR710)	1		25	2	
A5662101		Stepping Motor - DC 6.3W	2 → 1		25	22	1
	A6122101	Stepping Motor - DC 6.3W (SR710)	0 → 1		25	31	1
	A6125661	IC - AM27C256-15DC (SR710)	1		25	3	

**NOTE:** Refer to the attached illustration.

The following table shows the differences between the SR700 and the SR710.

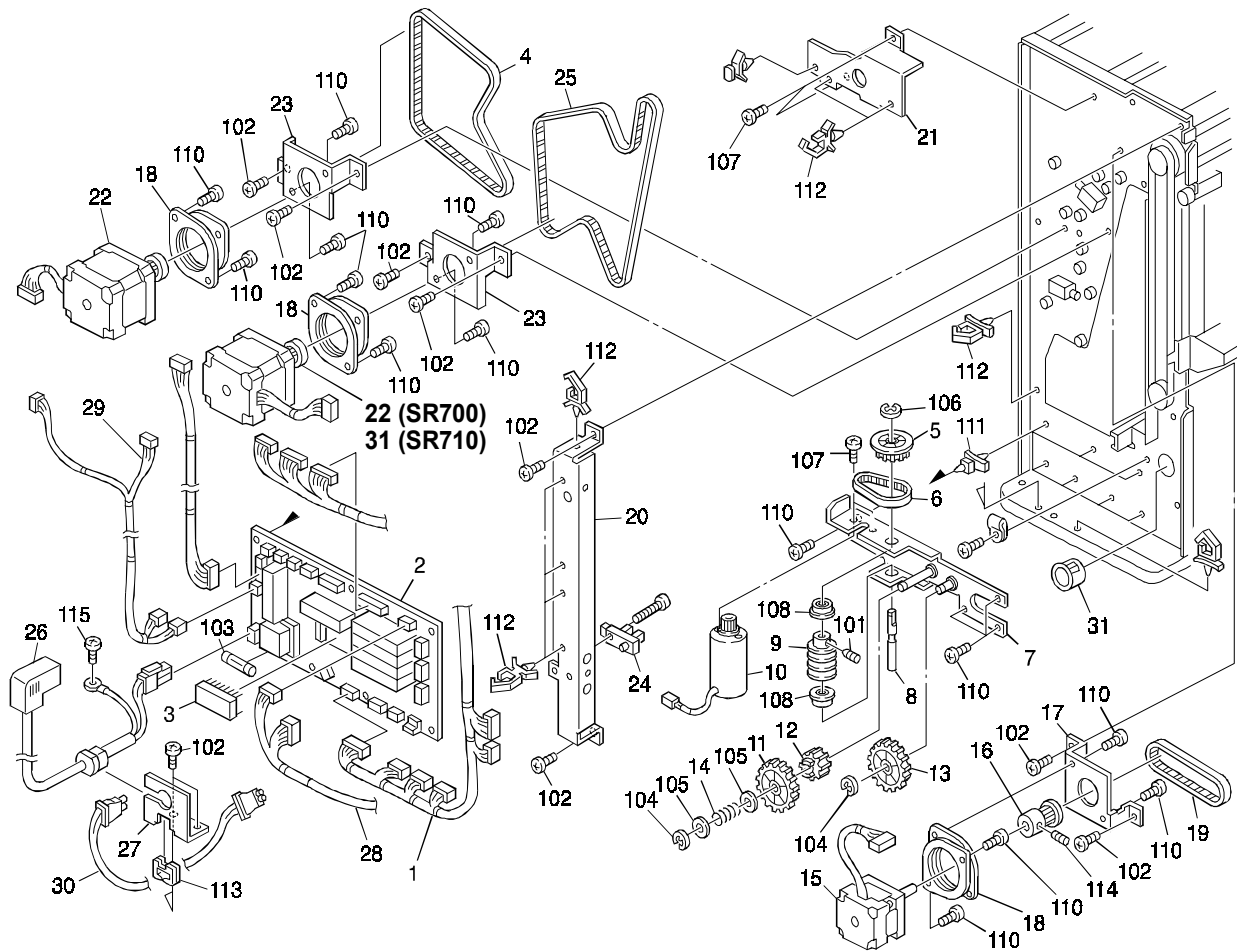
SR700	SR710	Description	Qty	Page	Index
A6665455	---	Grounding Plate (SR700)	1	7	21
A6125955	---	Grounding Plate - Bank (SR700)	1	7	22
A6125110	A6125120	Main Control Board	1	25	2
A5662101		Stepping Motor - DC 6.3W	1	25	22
	<b>A6122101</b>		1	25	31
A6125651	A6125661	IC - AM27C256-15DC	1	25	3

Reissued: 09-May-00

Model: AD50 Finisher

Date: 15-Sep-97

No.: MA612001a



Model: Finisher for the AD50		Date: 30-Sep-97	No: 2
Modified Article: Entrance Guide		Prepared by: E.Fukuyama	
From: QAC 2nd Field Information Dept.			
Reason for Modification:	<input type="checkbox"/> Parts catalog correction <input type="checkbox"/> Vendor change <input type="checkbox"/> To meet standards <input type="checkbox"/> To facilitate assembly <input type="checkbox"/> To improve reliability    (    ) <input type="checkbox"/> Part standardization <input checked="" type="checkbox"/> Other		

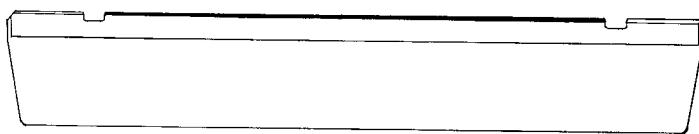
We would like to inform you of the modification in shape of the Entrance Guide packed with the Finisher.

## Reason for Modification

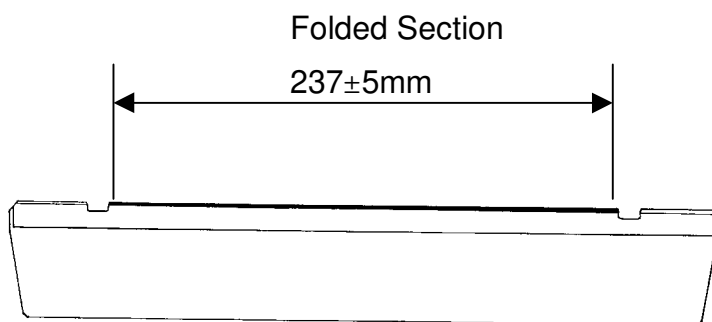
The Entrance Guide bends easily, so it is difficult to install on the main frame.

## Details of the Modification

To increase the strength of the Entrance Guide (mylar), the edges have been folded.



Old Entrance Guide



New Entrance Guide

Old part number	New part Number	Description	Qty	Int	Page	Index	Note
A6122329	A6122333	Entrance Guide	1	X/O	7	19	

Model: Finisher for the AD50

Date: 30-Sep-97

No: 2

MODEL NAME	DESTINATION	JAPAN PRODUCTION	
		CODE	SERIAL NUMBER
SR710 Savin	USA	A612- 55	9A87100001
SR710 Ricoh	EUR, ASIA, USA, CANADA, S. AMERICA	A612- 57	A7617100001
SR710 Gestetner, Nashuatec, Rex Rotary	EUR, ASIA, USA, CANADA, S. AMERICA	A612- 62	4N47100001
SR710 Infotec	EUROPE	A612- 66	3P81070001