

Model: CH-C2 Pro Finisher SR5070 & SR5080		Date: 9-May-18	No.: RD3CA001
Subject: VIBRATING PLATE:ASS'Y		Prepared by: H.K.	
From: 1st CP Business Department CP Business Center			
Classification:	<input checked="" type="checkbox"/> Troubleshooting <input type="checkbox"/> Mechanical <input type="checkbox"/> Paper path <input type="checkbox"/> Product Safety	<input checked="" type="checkbox"/> Part information <input type="checkbox"/> Electrical <input type="checkbox"/> Transmit/receive <input type="checkbox"/> Other ()	<input type="checkbox"/> Action required <input type="checkbox"/> Service manual revision <input type="checkbox"/> Retrofit information <input type="checkbox"/> Tier 2

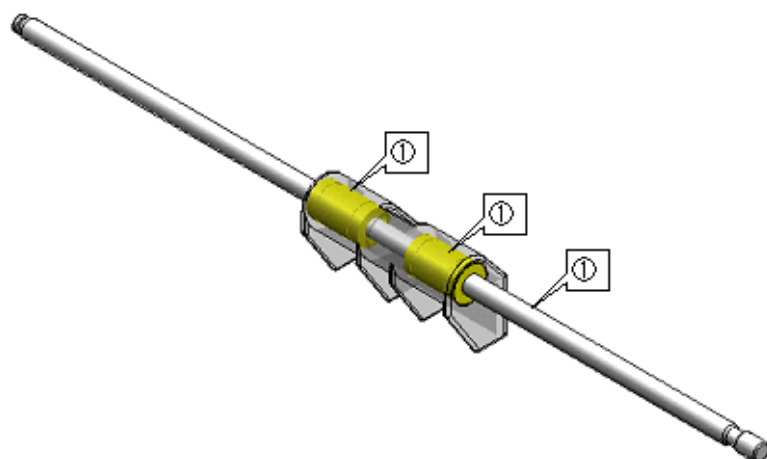
Old part number	New part number	Description	Q'ty	Int	Note
D7344066	D7344067	VIBRATING PLATE:ASS'Y	1 - 1	O/O	

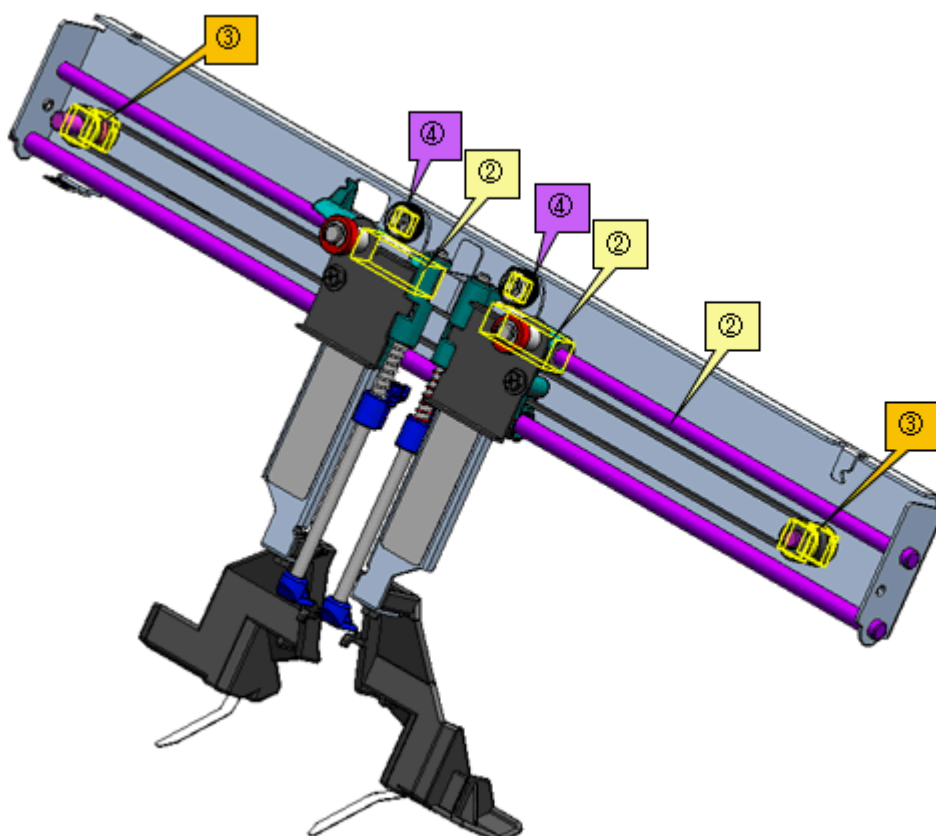
Change: The following changes were made to the vibrating plate assembly of the corner stapling unit:

- ① The bearings on the slider shaft were replaced with bushings.
- ② The bearings in the slide plate were replaced with bushings.
- ③ The pulleys for the belt drive were replaced with ball bearings.
- ④ The vibrating plate rollers were replaced with ball bearings.

Reason: For smooth movement of the vibrating plate, to prevent SC720-35 (Trailing Edge Press Motor Error)

See last page for the cut-in s/n.

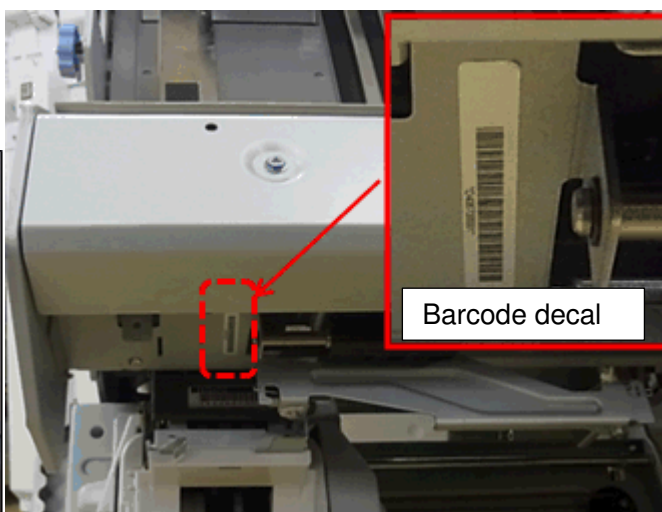
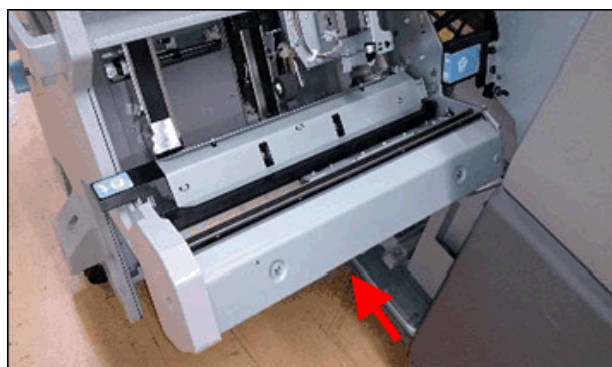




How to distinguish the new unit from the old unit

1. Barcode decal (New unit)

Look at the stack/staple unit from the direction indicated with the red arrow. New units are attached with a barcode decal as shown below.



Model: CH-C2 Pro Finisher SR5070 & SR5080

Date: 9-May-18

No.: RD3CA001

2. Bearing (old) or bushing (new) on the slider shaft

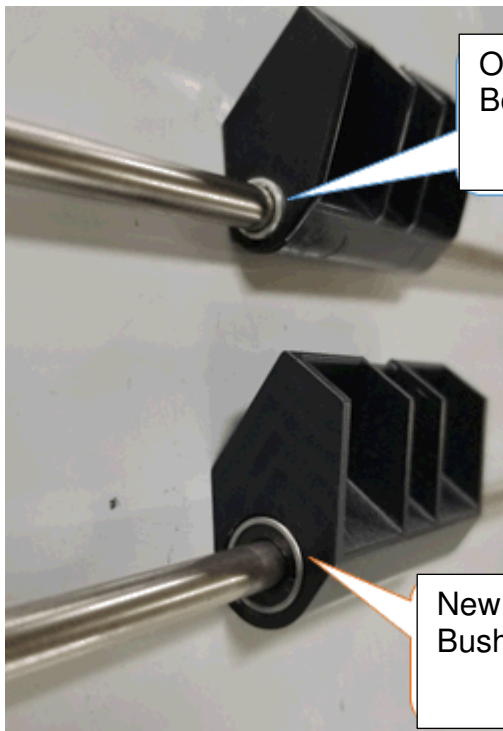
Check if the slider is installed with bearings or bushings.



Check the slider shaft.

Old: The outer race of the bearing touches the shaft.

New: A black bushing touches the shaft.



Old
Bearing

New
Bushing

Important: Cleaning maintenance of the shaft is unnecessary for the new unit.

Model: CH-C2 Pro Finisher SR5070 & SR5080	Date: 9-May-18	No.: RD3CA001
---	----------------	---------------

Cut-in s/n:

D3CA17 . . . C138E310001

D3CA27 . . . C138E320001

D3CB17 . . . C188E310001

D3CB27 . . . C188E320001

Components of the VIBRATING PLATE:ASS'Y

TBA

Reissued: 12-Jul-19

Model: CH-C2 Pro Finisher SR5070 & SR5080	Date: 15-Feb-19	No.: RD3CA002a
---	-----------------	----------------

RTB Reissue

The items in ***bold italics*** have been corrected or added.

Subject: Photosensor & Guide Plate		Prepared by: H.K.	
From: Sales Strategy Section, 1st CP Business Dep.			
Classification:	<input type="checkbox"/> Troubleshooting <input type="checkbox"/> Mechanical <input type="checkbox"/> Paper path <input type="checkbox"/> Product Safety	<input checked="" type="checkbox"/> Part information <input type="checkbox"/> Electrical <input type="checkbox"/> Transmit/receive <input type="checkbox"/> Other ()	<input type="checkbox"/> Action required <input type="checkbox"/> Service manual revision <input type="checkbox"/> Retrofit information <input type="checkbox"/> Tier 2

Old part number	New part number	Description	Q'ty	Int	Note
AW010089	G1752551	PHOTOSENSOR	1 - 1	X/X	O/O as a set
D4342456	D3G82456	GUIDE PLATE:EXIT:UPPER:OPEN AND CLOSE	1 - 1	X/X	

Change:

The shape of the GUIDE PLATE:EXIT:UPPER:OPEN AND CLOSE was changed for the new sensor.

Reason:

The production of the old sensor finished.

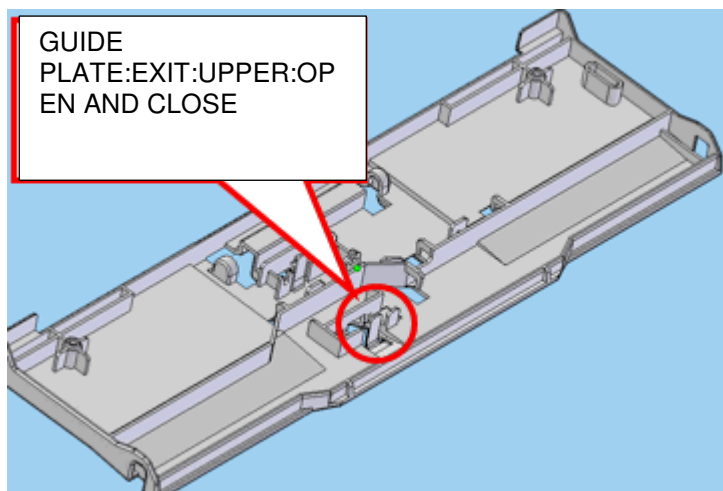
There is no interchangeability (X/X) between the old and new parts. When an old part needs to be replaced, make sure to replace it with the new parts listed in the table together as a set.

Reissued: 12-Jul-19

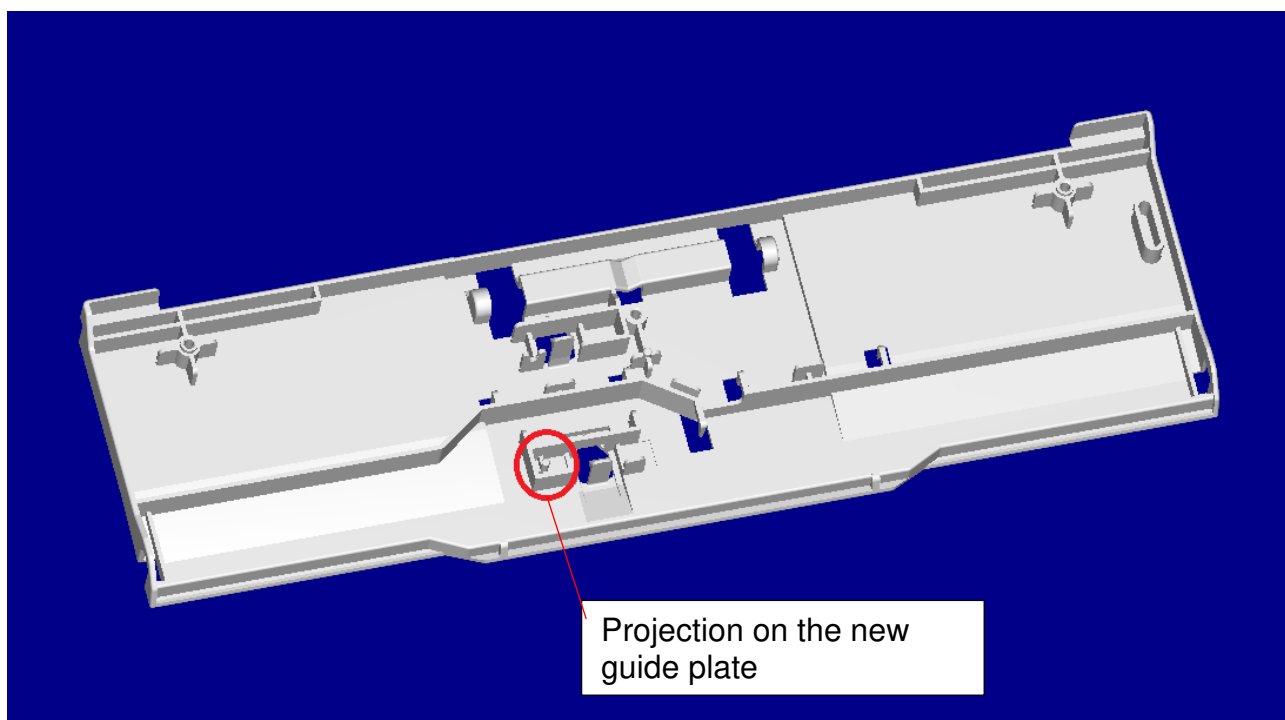
Model: CH-C2 Pro Finisher SR5070 & SR5080	Date: 15-Feb-19	No.: RD3CA002a
---	-----------------	----------------

The shape of the GUIDE PLATE:EXIT:UPPER:OPEN AND CLOSE was changed for the new sensor. (A projection was added on the New Guide Plate.)

Old



New

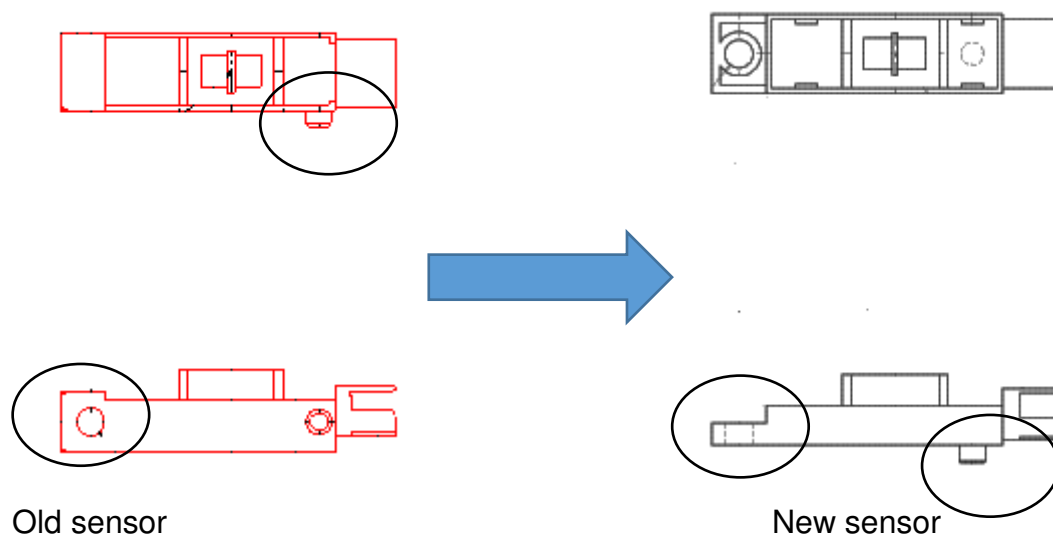


Reissued: 12-Jul-19

Model: CH-C2 Pro Finisher SR5070 & SR5080

Date: 15-Feb-19

No.: RD3CA002a

**Cut-in s/n:**D3CA17 . . . **C138EB10001**D3CA27 . . . **C138EB20001**D3CB17 . . . **C188EB10001**D3CB27 . . . **C188EB20001**

Reissued: 12-Jul-19

Model: CH-C2 Pro Finisher SR5070 & SR5080	Date: 6-Mar-19	No.: RD3CA003a
---	----------------	----------------

RTB Reissue

The items in ***bold italics*** have been corrected or added.

Subject: Left rear lower cover & Connector bracket		Prepared by: H.K.	
From: 1st CP Business Department CP Business Center			
Classification:	<input type="checkbox"/> Troubleshooting <input type="checkbox"/> Mechanical <input type="checkbox"/> Paper path <input type="checkbox"/> Product Safety	<input checked="" type="checkbox"/> Part information <input type="checkbox"/> Electrical <input type="checkbox"/> Transmit/receive <input type="checkbox"/> Other ()	<input type="checkbox"/> Action required <input type="checkbox"/> Service manual revision <input type="checkbox"/> Retrofit information <input type="checkbox"/> Tier 2

Old part number	New part number	Description	Q'ty	Int	Note
D3CA6422	D3CA6432	COVER:REAR LOWER:LEFT	1 - 1	X/X	O/O as a set (D3CA:SR5080)
D4345560 (not listed in the Parts Catalog)	D7345560	BRACKET:CONNECTOR	1 - 1	X/X	
D3CA6422	D3CA6432	COVER:REAR LOWER:LEFT	1 - 1	O/O	(D3CB:SR5070)

Change: The shape of the Left rear lower cover and Connector bracket changed.

Reason: Due to part standardization with new models

NOTE:

For SR5080

There is no interchangeability (X/X) between the old and new parts. When an old part needs to be replaced, make sure to replace it with the new parts listed in the table together as a set.

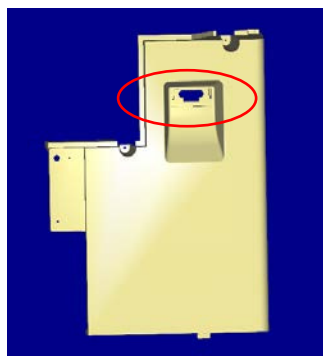
For SR5070

The Bracket is not used for SR5070. Only the Left rear lower cover changed.

Reissued: 12-Jul-19

Model: CH-C2 Pro Finisher SR5070 & SR5080	Date: 6-Mar-19	No.: RD3CA003a
---	----------------	----------------

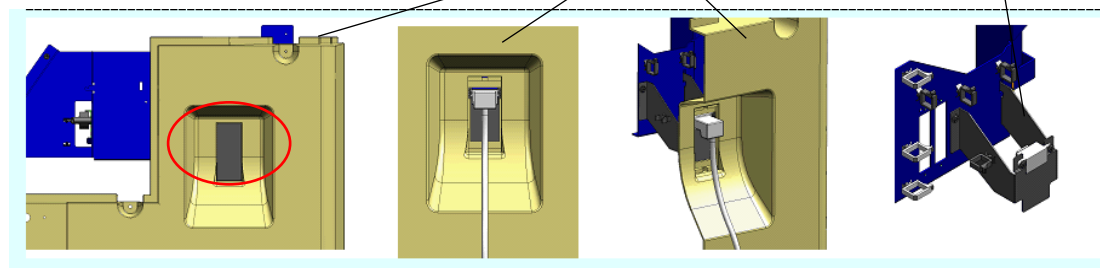
Old cover



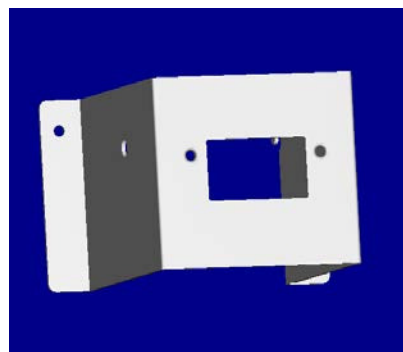
New Cover

New Connector Bracket

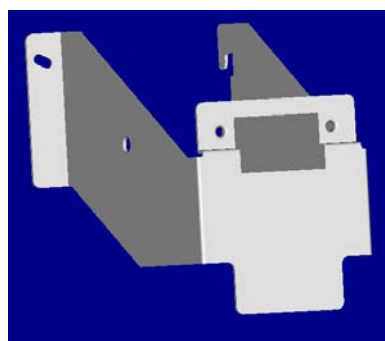
New Cover and Connector Bracket



Old Connector Bracket



New Connector Bracket



Cut-in s/n:

D3CA17 . . . **C138EC10001**

D3CA27 . . . **C138EC20001**

D3CB17 . . . **C189E310001**

Reissued: 12-Jul-19

Model: CH-C2 Pro Finisher SR5070 & SR5080	Date: 6-Mar-19	No.: RD3CA003a
---	----------------	----------------

D3CB27 · · · ***C188E220012***

Reissued: 12-Jul-19

Model: CH-C2 Pro Finisher SR5080	Date: 14-Mar-19	No.: RD3CA004a
----------------------------------	-----------------	----------------

RTB Reissue

The items in ***bold italics*** have been corrected or added.

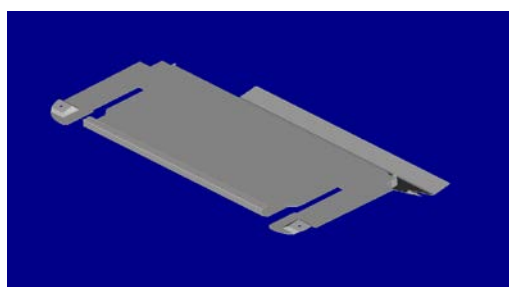
Subject: Lower Cover of the paper exit sub unit		Prepared by: H.K.	
From: 1st CP Business Department CP Business Center			
Classification:	<input type="checkbox"/> Troubleshooting <input type="checkbox"/> Mechanical <input type="checkbox"/> Paper path <input type="checkbox"/> Product Safety	<input checked="" type="checkbox"/> Part information <input type="checkbox"/> Electrical <input type="checkbox"/> Transmit/receive <input type="checkbox"/> Other ()	<input type="checkbox"/> Action required <input type="checkbox"/> Service manual revision <input type="checkbox"/> Retrofit information <input type="checkbox"/> Tier 2

Old part number	New part number	Description	Q'ty	Int	Note
D7341881	D7341882	COVER:LOWER:PAPER EXIT SUB-UNIT:PAPER CRIMP:PRESS	1 - 1	X/X	O/O as a set
D3CA1889		LABEL:COVER:LOWER:TRANS PORT UNIT	1 - 0		
	D7341064	COVER:TRAY	0 - 1	X/X	
	04543006Q	TAPPING SCREW - M3X6	4 - 6		

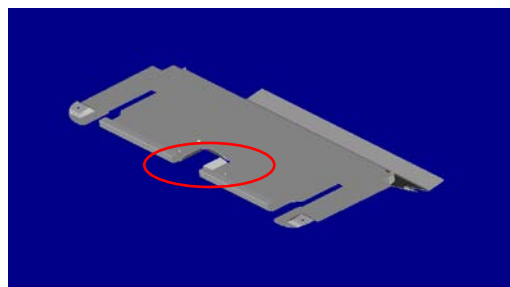
Change: The cutout on the Lower Cover of the paper exit sub unit was covered with a Tray Cover using two screws. (The cutout was purposed for parts standardization with other models.) The Label attached to the transport unit lower cover was eliminated.

Reason: Parts standardization

COVER:LOWER:PAPER EXIT SUB-UNIT:PAPER CRIMP:PRESS



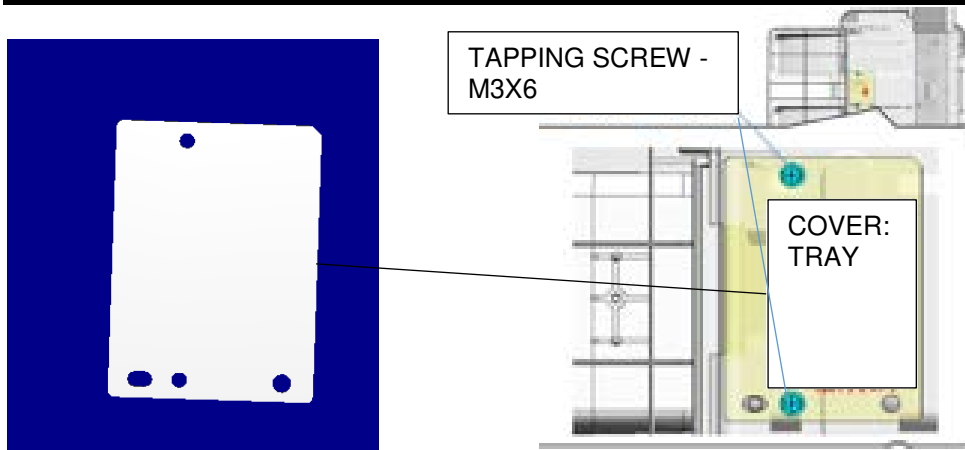
Old



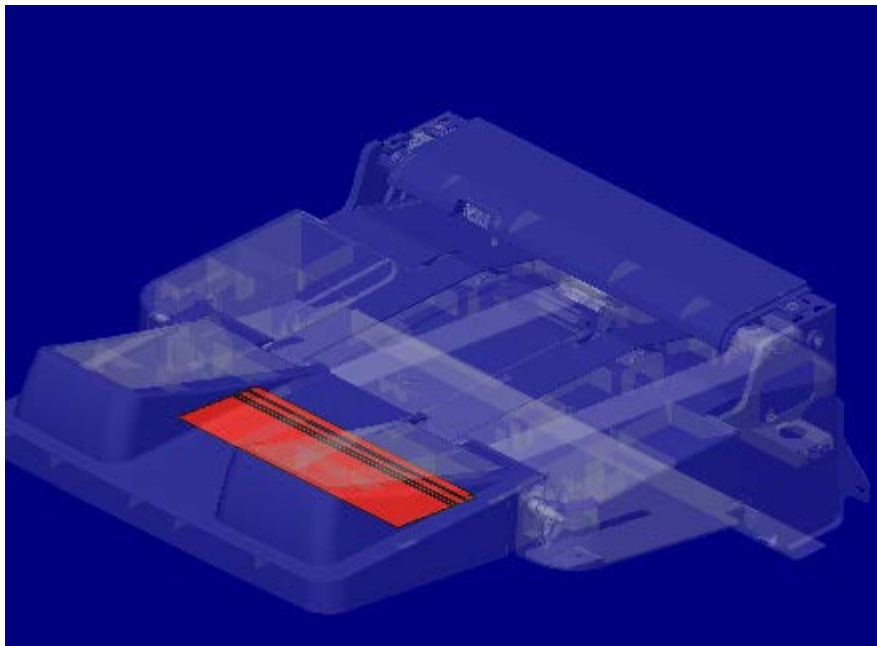
New

Reissued: 12-Jul-19

Model: CH-C2 Pro Finisher SR5080	Date: 14-Mar-19	No.: RD3CA004a
----------------------------------	-----------------	----------------



TRANSPORT UNIT LOWER COVER LABEL: eliminated



Cut-in s/n:

D3CA17 . . . **C139E410001**

D3CA27 . . . **C139E420001**

Reissued: 12-Jul-19

Model: CH-C2 Pro Finisher SR5070 & SR5080	Date: 29-Mar-19	No.: RD3CA005a
---	-----------------	----------------

RTB Reissue

The items in ***bold italics*** have been corrected or added.

Subject: Guide Plate & Roller		Prepared by: H.K.	
From: Sales Strategy Section, 1st CP Business Dep.			
Classification:	<input type="checkbox"/> Troubleshooting <input type="checkbox"/> Mechanical <input type="checkbox"/> Paper path <input type="checkbox"/> Product Safety	<input checked="" type="checkbox"/> Part information <input type="checkbox"/> Electrical <input type="checkbox"/> Transmit/receive <input type="checkbox"/> Other ()	<input type="checkbox"/> Action required <input type="checkbox"/> Service manual revision <input type="checkbox"/> Retrofit information <input type="checkbox"/> Tier 2

Old part number	New part number	Description	Q'ty	Int	Note
D4342661 (not listed in the Parts Catalog)	D3G82661	GUIDE PLATE:LENGTHWISE UPPER:OPEN AND CLOSE	1 - 1	X/X	O/O as a set *: See Note.
AF022148		ROLLER:DRIVEN:L=125	6 - 5		
	D7343004	ROLLER:DRIVEN	0 - 1	X/X	
	AA080237	BUSHING - 4X5X7	0 - 2	X/X	
	D3G83006	SHAFT:DRIVEN ROLLER:ENTRANCE:DIA4	0 - 1	X/X	
	07200040E	RETAINING RING - M4	0 - 2	X/X	

Change:

The cutouts on the Open and Close Upper Lengthwise Guide Plate for the driven rollers were widened from 12mm to 26mm. The width of the driven roller was changed from 7 mm to 18.5 mm. The driven roller can be procured separately.

Reason:

To improve paper transport performance and for parts standardization

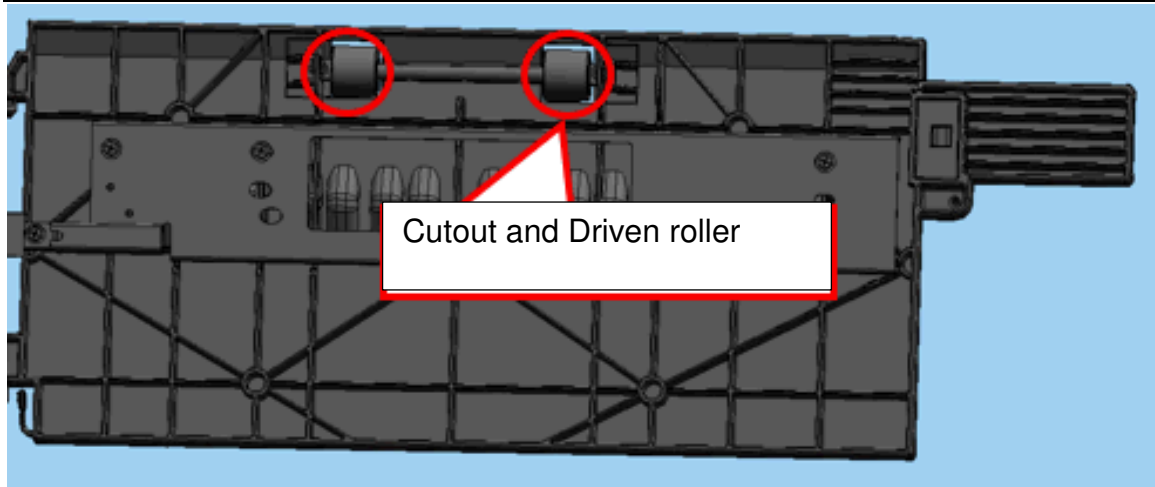
*Note

There is no interchangeability (X/X) between the old and new parts. When an old part needs to be replaced, make sure to replace it with the new parts listed in the table together as a set.

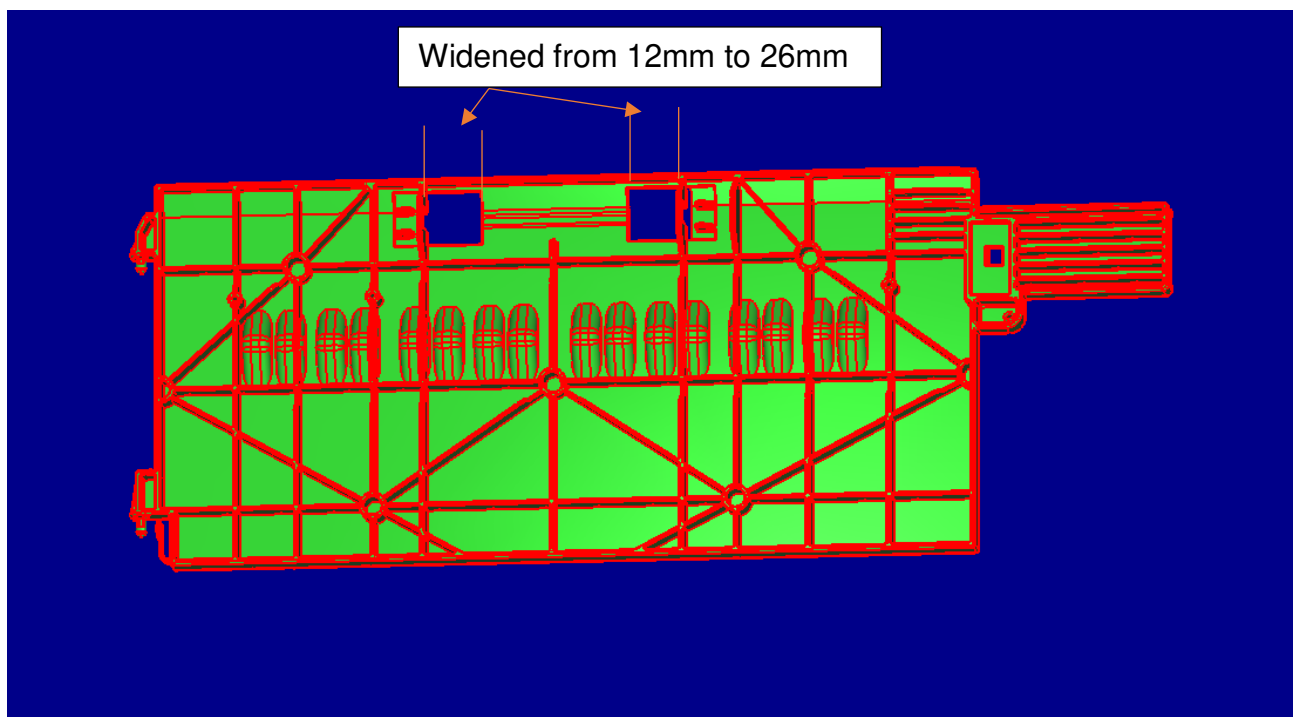
To facilitate servicing, the whole unit (D4342606: GUIDE PLATE:LENGTHWISE UPPER:OPEN AND CLOSE:ASS'Y) was also registered as a spare part. This unit is listed in the Parts Catalog.

Reissued: 12-Jul-19

Model: CH-C2 Pro Finisher SR5070 & SR5080	Date: 29-Mar-19	No.: RD3CA005a
---	-----------------	----------------

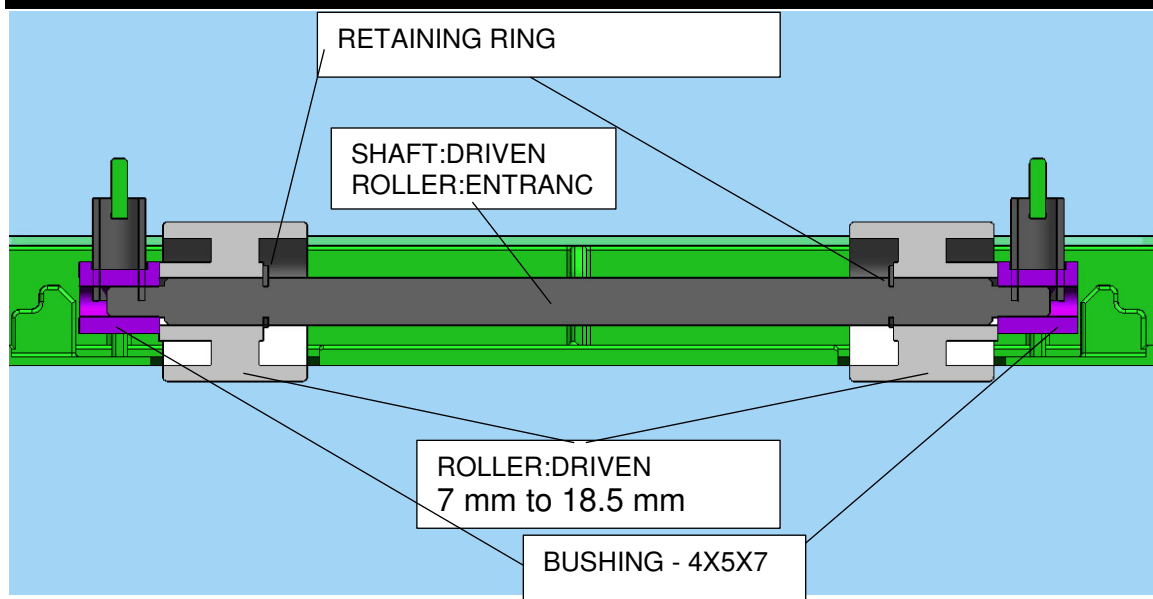


GUIDE PLATE:LENGTHWISE UPPER:OPEN AND CLOSE



Reissued: 12-Jul-19

Model: CH-C2 Pro Finisher SR5070 & SR5080	Date: 29-Mar-19	No.: RD3CA005a
---	-----------------	----------------


Cut-in s/n:

D3CA17 . . . ***C138EB10001***

D3CA27 . . . ***C138EB20001***

D3CB17 . . . ***C188EB10001***

D3CB27 . . . ***C188EB20003***

Reissued: 12-Jul-19

Model: CH-C2 Pro Finisher SR5070/SR5080	Date: 14-Jun-19	No.: RD3CA006a
---	-----------------	----------------

RTB Reissue

The items in ***bold italics*** have been corrected or added.

Subject: Push Switch & Safety Switch Cover		Prepared by: H.K.	
From: 1st CP Business Department CP Business Center			
Classification:	<input type="checkbox"/> Troubleshooting <input type="checkbox"/> Mechanical <input type="checkbox"/> Paper path <input type="checkbox"/> Product Safety	<input checked="" type="checkbox"/> Part information <input type="checkbox"/> Electrical <input type="checkbox"/> Transmit/receive <input type="checkbox"/> Other ()	<input type="checkbox"/> Action required <input type="checkbox"/> Service manual revision <input type="checkbox"/> Retrofit information <input type="checkbox"/> Tier 2

Old part number	New part number	Description	Q'ty	Int	Note
12042947	D7345380	PUSH SWITCH:ON OFF DETECTOR:FAGL-AA12	1 - 1	X/X	
D3551325	D3EW1330	COVER:SAFETY SWITCH: HOOK	1 - 1	X/X	

Change:

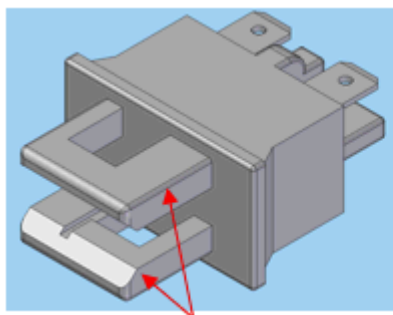
The material and shape of the Push Switch were changed. The shape of the Hook Safety Switch Cover was changed for the new sensor. The cutout of the side plate of the Finisher was changed for the new Push Switch and Hook Safety Switch Cover.

Reason:

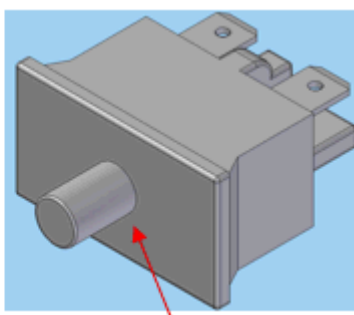
The production of the old sensor finished.

There is no interchangeability (X/X) between the old and new parts. The side plate of the Finisher is not supplied as a spare part because it cannot be replaced in the field. For the old machines, the old parts are in stock.

Old Push Switch



New Push Switch



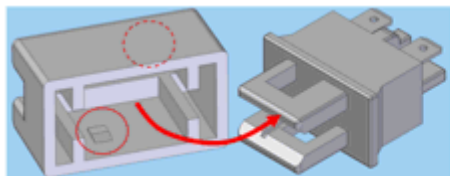
Reissued: 12-Jul-19

Model: CH-C2 Pro Finisher SR5070/SR5080

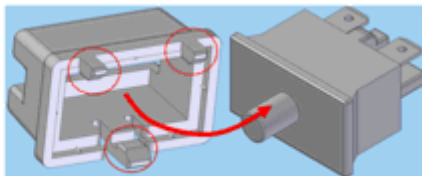
Date: 14-Jun-19

No.: RD3CA006a

Old Hook Safety Switch Cover



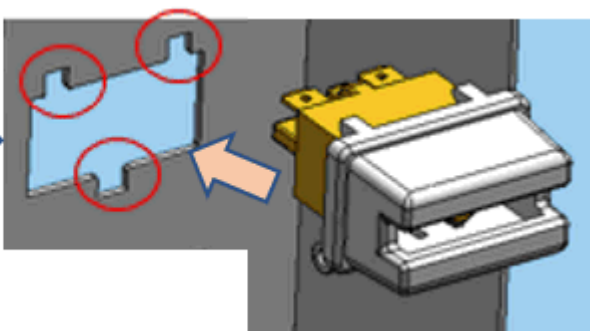
New Hook Safety Switch Cover



Old side plate



New side plate, Push Switch, and Hook Safety Switch Cover

**Cut-in s/n:**D3CA17 . . . ***C139E510001***D3CA27 . . . ***C139E520006***D3CB17 . . . ***C189E610001***D3CB27 . . . ***C189E620001***

Reissued: 12-Jul-19

Model: CH-C2 Pro Finisher SR5070/SR5080	Date: 14-Jun-19	No.: RD3CA006a
---	-----------------	----------------

RTB Reissue

The items in ***bold italics*** have been corrected or added.

Subject: Push Switch & Safety Switch Cover		Prepared by: H.K.	
From: 1st CP Business Department CP Business Center			
Classification:	<input type="checkbox"/> Troubleshooting <input type="checkbox"/> Mechanical <input type="checkbox"/> Paper path <input type="checkbox"/> Product Safety	<input checked="" type="checkbox"/> Part information <input type="checkbox"/> Electrical <input type="checkbox"/> Transmit/receive <input type="checkbox"/> Other ()	<input type="checkbox"/> Action required <input type="checkbox"/> Service manual revision <input type="checkbox"/> Retrofit information <input type="checkbox"/> Tier 2

Old part number	New part number	Description	Q'ty	Int	Note
12042947	D7345380	PUSH SWITCH:ON OFF DETECTOR:FAGL-AA12	1 - 1	X/X	
D3551325	D3EW1330	COVER:SAFETY SWITCH: HOOK	1 - 1	X/X	

Change:

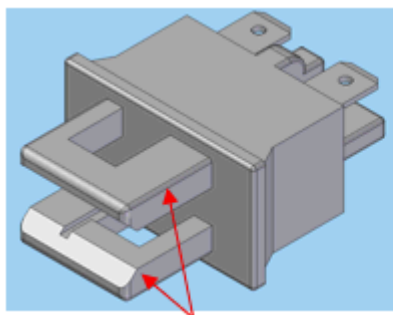
The material and shape of the Push Switch were changed. The shape of the Hook Safety Switch Cover was changed for the new sensor. The cutout of the side plate of the Finisher was changed for the new Push Switch and Hook Safety Switch Cover.

Reason:

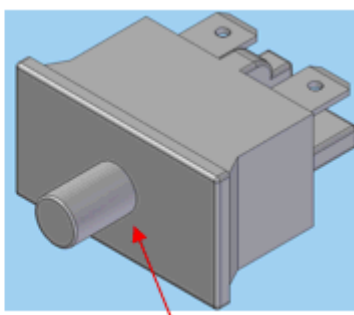
The production of the old sensor finished.

There is no interchangeability (X/X) between the old and new parts. The side plate of the Finisher is not supplied as a spare part because it cannot be replaced in the field. For the old machines, the old parts are in stock.

Old Push Switch



New Push Switch



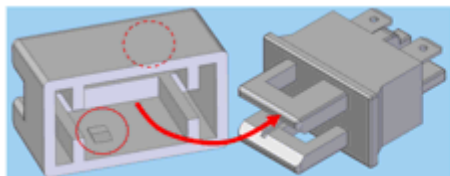
Reissued: 12-Jul-19

Model: CH-C2 Pro Finisher SR5070/SR5080

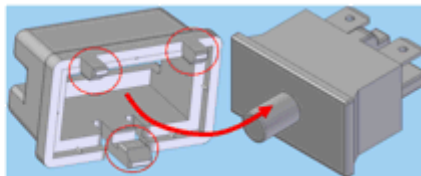
Date: 14-Jun-19

No.: RD3CA006a

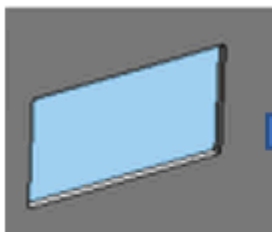
Old Hook Safety Switch Cover



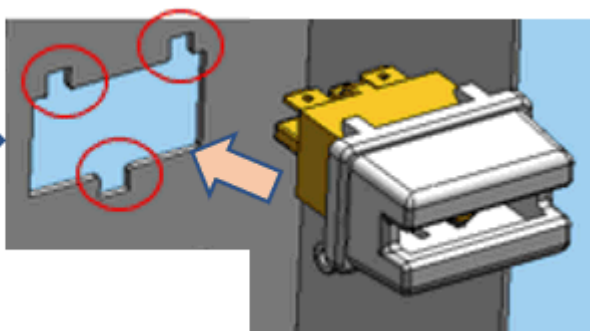
New Hook Safety Switch Cover



Old side plate



New side plate, Push Switch, and Hook Safety Switch Cover

**Cut-in s/n:**D3CA17 . . . **C139E510001**D3CA27 . . . **C139E520006**D3CB17 . . . **C189E610001**D3CB27 . . . **C189E620001**

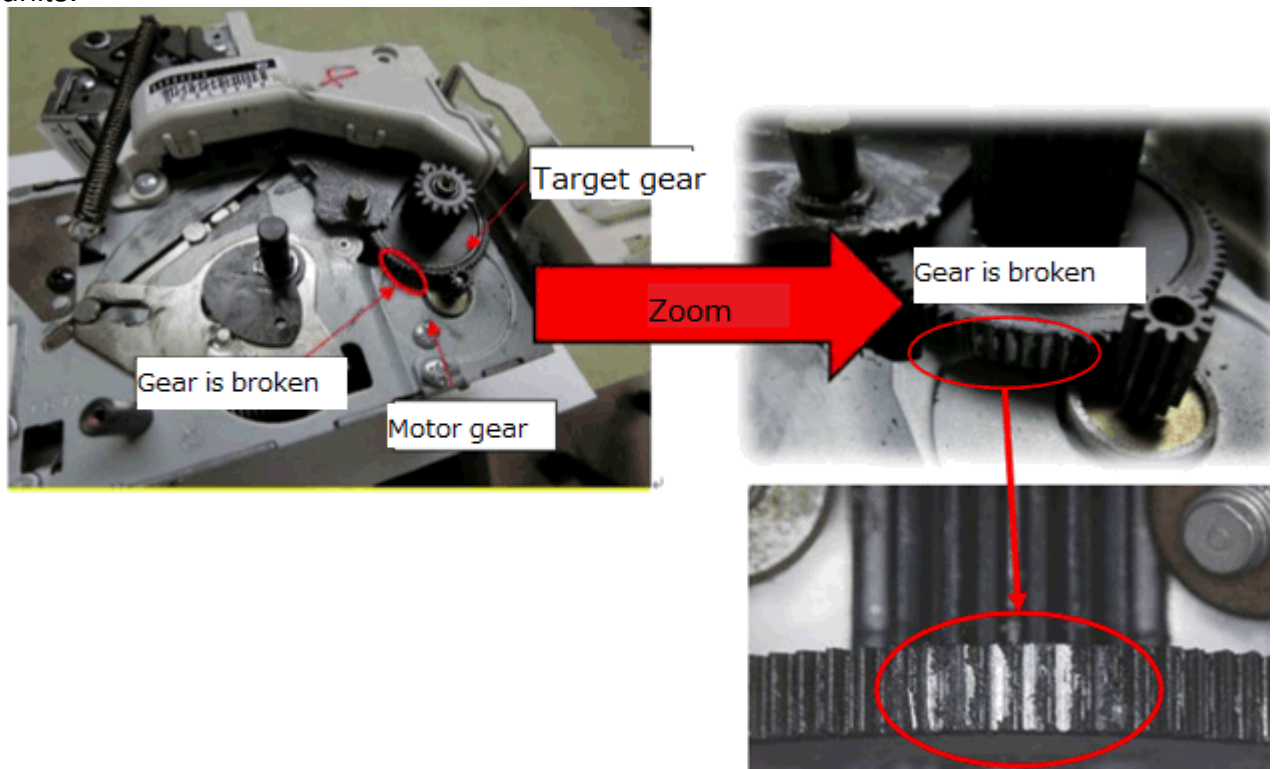
Model: Booklet Finisher SR5080 / SR5070		Date: 8-Oct-19	No.: RD3CA007
Subject: Troubleshooting : SC720-44		Prepared by: J. Kobayashi	
From: PPCS Sect., CIP Product Quality Mnagement Dept.			
Classification:	<input checked="" type="checkbox"/> Troubleshooting <input type="checkbox"/> Mechanical <input type="checkbox"/> Paper path <input type="checkbox"/> Product Safety	<input checked="" type="checkbox"/> Part information <input type="checkbox"/> Electrical <input type="checkbox"/> Transmit/receive <input type="checkbox"/> Other ()	<input type="checkbox"/> Action required <input type="checkbox"/> Service manual revision <input type="checkbox"/> Retrofit information <input type="checkbox"/> Tier 2

SYMPTOM

SC720-44 may occur after around 100,000 times staples.

CAUSE

The gear on staple unit gets damage since defective gear is contained in some of staple units.



Model: Booklet Finisher SR5080 / SR5070

Date: 8-Oct-19

No.: RD3CA007

SOLUTION

If the symptom occurs, do the following:

Check the serial number of the Staple unit, and if the number is target, then replace the unit to the following part number.

Service part

No	Part Name	P/N	QTY
1	Staple unit	D7349902	1

Target units of Staple serial number:

Unit in Booklet Finisher & Finisher:

RD8M0041 to RD8M0792

RD9A0001 to RD9A0952

RD9B0001 to RD9B0187

RD9C0001 to RD9C0188

RD9D0005 to RD9D0020

Service part:

RH8M0069 to RH8M0320

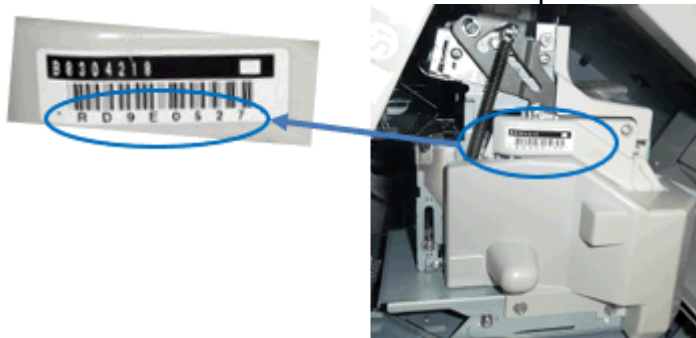
RH9A0001 to RH9A0280

RH9B0001 to RH9B0204

RH9C0009 to RH9C0160

RH9D0001 to RH9D0097

How to check the serial number of staple unit



Note: The Staple unit serial number in Finisher is the factory default number.

If there is a Staple unit replacement history, service parts are installed, so please verify the service part serial number as well!

Model: Booklet Finisher SR5080 / SR5070

Date: 8-Oct-19

No.: RD3CA007

Target serial number of Finisher

Serial number described below shows the corresponded units to require the part replacement.

Region	Type	Serial number	
NA Shipped to Tustin, Long Beach	D3CA17	C139E110001 – C139E110004 C139E310001 – C139E310017 C139E510002 C139E510012	C139E210001 – C139E210008 C139E410001 – C139E410045 C139E510017 C139E510019
	D3CB17	C189E110001 – C189E110016 C189E310005 – C189E310018	C189E310001 – C189E310003 C189E410001 – C189E410011
RE Shipped to Rotterdam	D3CA27	C139E120002 – C139E120014 C139E220001 – C139E220018 C139E320005 – C139E320007 C139E420004 C139E420007	C139E120016 – C139E120017 C139E320002 – C139E320003 C139E420001 C139E420003
	D3CB27	C189E120001 – C189E120003 C189E220012 – C189E220017 C189E320017	C189E220001 – C189E220010 C189E320001 – C189E320015
RA Shipped to Hong Kong	D3CA17	C139E410043	
	D3CA27	C139E420005	
RA Ship to Australia	D3CA27	C139E120001 C139E320001	C139E320004
RA Shipped to NZ	D3CA27	C139E420002 C139E420006	
CN Shipped to Shanghai	D3CA27	C139E120015 C139E120018	
	D3CB27	C189E220011 C189E320016	

Cut-In Serial number

Modification to apply the modified part was done from the serial number shown as below.

Booklet Finisher SR5080

D3CA17: C139E510020 ~

D3CA27: C139E520001 ~

Finisher SR5070

D3CB17: C189E510001 ~

D3CB27: C189E620001 ~