

Reissued: 14-Sep-11

Model: High Capacity Stacker SK5020 (D515)	Date: 14-Jul-11	No.:RD515001a
--	-----------------	---------------

Subject: Firmware Release Note: High CapacityStacker SK5020		Prepared by: N.lida	
From: PP Service Planning Department 1G			
Classification:	<input type="checkbox"/> Troubleshooting	<input type="checkbox"/> Part information	<input type="checkbox"/> Action required
	<input type="checkbox"/> Mechanical	<input type="checkbox"/> Electrical	<input type="checkbox"/> Service manual revision
	<input type="checkbox"/> Paper path	<input type="checkbox"/> Transmit/receive	<input type="checkbox"/> Retrofit information
	<input type="checkbox"/> Product Safety	<input checked="" type="checkbox"/> Other (Firmware)	<input checked="" type="checkbox"/> Tier 2

This RTB has been issued to announce the firmware release information for the **Stacker**.

Version	Program No.	Effective Date
01.030:02	D5155300B_up	September 2011 production
01.010:02	D5155300A_up	1st Mass production

Version	Modified Points or Symptom Corrected
01.030:02	Symptom Corrected; <ul style="list-style-type: none"> <i>Pages are falsely reprinted when recovering from a jam by opening the GBC door to suspend printing.</i> <i>Jam at the Stacker is falsely indicated after switching to a different feed-out tray and printing suspends due to the feeder tray running out of paper.</i>
01.010:02	1st Mass production

Reissued: 05-Jan-12

Model: High Capacity Stacker SK5020 (D515)	Date: 14-Jul-11	No.: RD515001b
--	-----------------	----------------

RTB Reissue

The items in bold italics have been corrected or added.

Subject: Firmware Release Note: Stacker_LOIRE_B1		Prepared by: S. Sasaki	
From: 1st PP Tech Service Sect., PP Tech Service Dept.			
Classification:	<input type="checkbox"/> Troubleshooting	<input type="checkbox"/> Part information	<input type="checkbox"/> Action required
	<input type="checkbox"/> Mechanical	<input type="checkbox"/> Electrical	<input type="checkbox"/> Service manual revision
	<input type="checkbox"/> Paper path	<input type="checkbox"/> Transmit/receive	<input type="checkbox"/> Retrofit information
	<input type="checkbox"/> Product Safety	<input checked="" type="checkbox"/> Other (Firmware)	<input checked="" type="checkbox"/> Tier 2

This RTB has been issued to announce the firmware release information for the **Stacker**.

Version	Program No.	Effective Date
<i>01.040:02</i>	<i>D5155300C_up</i>	<i>January 2012 production</i>
01.030:02	D5155300B_up	September 2011 production
01.010:02	D5155300A_up	1st Mass production

Version	Modified Points or Symptom Corrected
<i>01.040:02</i>	<i>Specification Changed: The timing to switch the GBC motor ON/OFF was optimized to prevent jams.</i>
01.030:02	Symptom Corrected: 1. Pages are falsely reprinted when recovering from a jam by opening the GBC door to suspend printing. 2. Jam at the Stacker is falsely indicated after switching to a different feed-out tray and printing suspends due to the feeder tray running out of paper.
01.010:02	1st Mass production

Model: High Capacity Stacker SK5020 (D515)		Date: 13-Feb-12	No.: RD515002
Subject: Troubleshooting timing belt slippage		Prepared by: S. Sasaki	
From: 1st PP Tech Service Sec., PP tech service Dept.			
Classification:	<input checked="" type="checkbox"/> Troubleshooting	<input type="checkbox"/> Part information	<input type="checkbox"/> Action required
	<input type="checkbox"/> Mechanical	<input type="checkbox"/> Electrical	<input type="checkbox"/> Service manual revision
	<input type="checkbox"/> Paper path	<input type="checkbox"/> Transmit/receive	<input type="checkbox"/> Retrofit information
	<input type="checkbox"/> Product Safety	<input type="checkbox"/> Other ()	<input checked="" type="checkbox"/> Tier 2

This RTB has been issued to announce the troubleshooting instructions to prevent slippage of the timing belt.

Symptom

The timing belt could slip when stacking thin heavy paper on the SK5020.

Cause

Insufficient durability of the components around the timing belt

Action

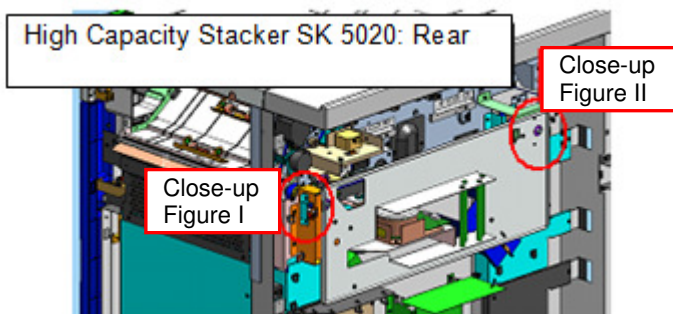
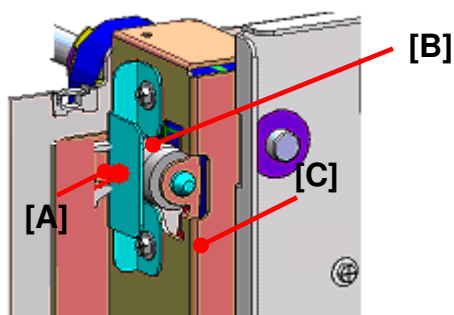
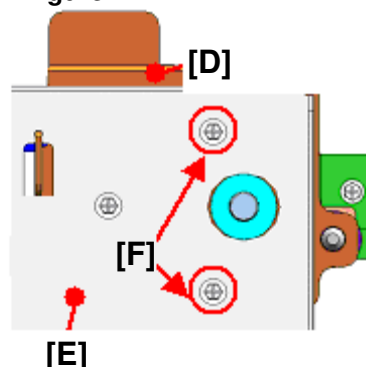
Modify the SK5020 using the modified and newly added parts announced in RTB RD447007.

Please see the following page for detailed procedures.

Model: High Capacity Stacker SK5020 (D515)

Date: 13-Feb-12

No.: RD515002


Figure I

Figure II


Step 1

Attach the bracket [A]. (D4474123: Bracket: Auxiliary: Timing Pulley: Ass'y)

Install the bearing [B]. (AE030030: Ball Bearing 8x19x6)

Replace the bracket [C]. (D4474121: Bracket: Protect: Drive Sub-unit)

Step 2

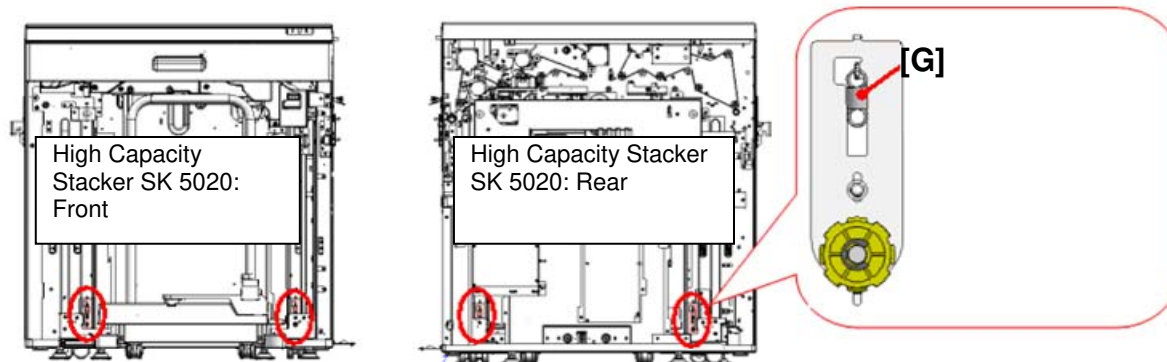
Replace the bracket [D]. (D4474425: Bracket: Protect: Shaft: Left Inner Rear)

Replace the supporting plate [E]. (D4474534: Supporting Plate: Timing Belt)

Fasten the two tapping screws [F]. (04514006N: Tapping Screw 4x6)

Step 3

Replace the tension spring [G]. (D4474318: Tension Spring: Tensioner)



Model: High Capacity Stacker SK5010 (D447)		Date: 05-Dec-11	No.: RD447007
Subject: Part Changes of High Capacity Stacker SK5010		Prepared by: S. Sasaki	
From: 1st PP Technical Service Section			
Classification:	<input type="checkbox"/> Troubleshooting <input checked="" type="checkbox"/> Part information <input type="checkbox"/> Action required <input type="checkbox"/> Mechanical <input type="checkbox"/> Electrical <input type="checkbox"/> Service manual revision <input type="checkbox"/> Paper path <input type="checkbox"/> Transmit/receive <input type="checkbox"/> Retrofit information <input type="checkbox"/> Product Safety <input type="checkbox"/> Other () <input type="checkbox"/> Tier 2		

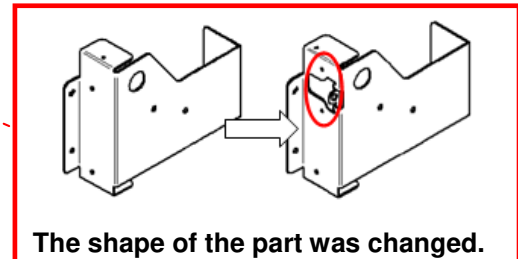
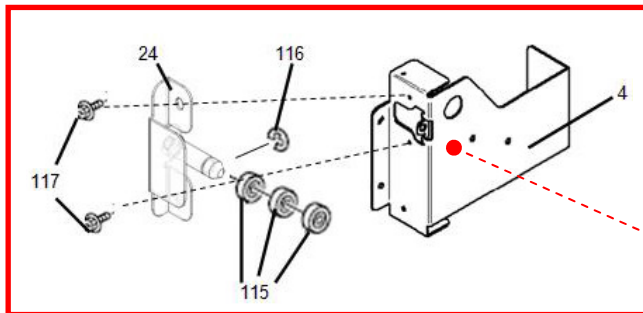
This RTB has been issued to announce the following parts changes.

17. Drive Section 2 (D447)

Old Part Number	New Part Number	Description	Q'ty	Int	Page	Index	Note
D4474118	D4474121	Bracket:Protect:Drive Sub-unit	1	X/O As a set	35	4	*1
	D4474123	Bracket:Auxiliary:Timing Pulley :Ass'y	1		35	24	*2
D4474424	D4474425	Bracket:Protect:Shaft:Left Inner Rear	1	X/O	35	17	*1
D4474531	D4474534	Supporting Plate:Timing Belt	1	X/O	35	2	*1
	AE030030	Ball Bearing 8x19x6	3		35	115	*2
	07200060E	Retaining Ring	1		35	116	*2
	04514006N	Tapping Screw 4x6	2		35	117	*2

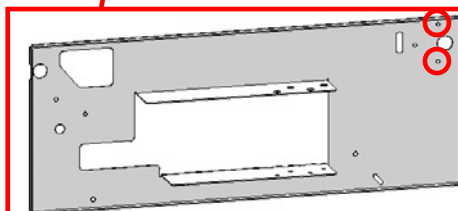
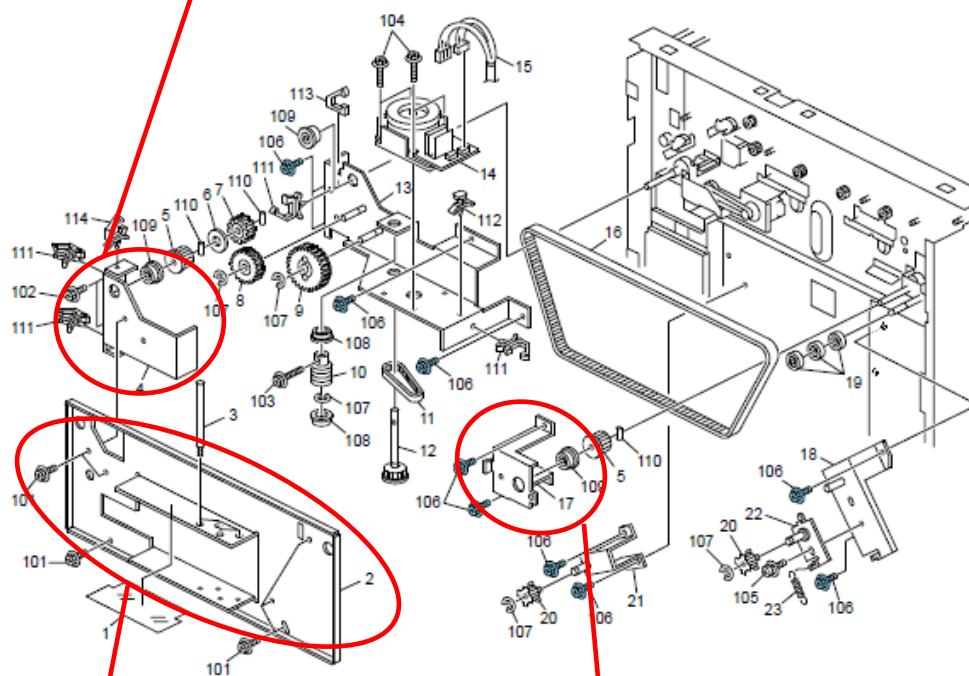
Note 1. The shape of the part was changed

Note 2. The part was newly added.

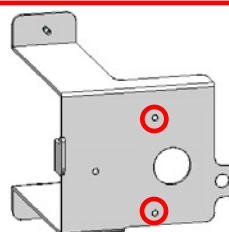


The shape of the part was changed.

17.Drive Section 2 (D447)



The two screw holes were added.



The two screw holes were added.