

**Internal Shift Tray SH3000  
Machine Code: B791**

**SERVICE MANUAL**

Apr. 21st, 2006  
Subject to change

---

# Read This First

---

## Safety and Symbols

---

---

### Replacement Procedure Safety

---

#### **CAUTION**


- Turn off the main power switch and unplug the machine before beginning any of the replacement procedures in this manual.

---

### Symbols Used in this Manual

---


This manual uses the following symbols.

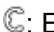
: See or Refer to

: Screws

: Connector

: Clip ring

: Clamp

: E-ring

# Table of Contents

Read This First ..... i

    Safety and Symbols ..... i

        Replacement Procedure Safety ..... i

        Symbols Used in this Manual ..... i

Table of Contents ..... ii

1. Replacement and Adjustment ..... 1

    Tray Cover ..... 1

    Tray Motor and Half Turn Sensor Board ..... 2

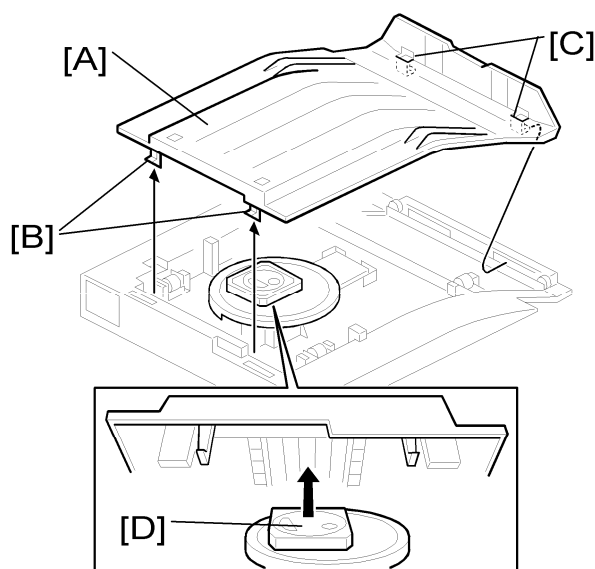
2. Detailed Descriptions ..... 3

    Component Layout ..... 3

    Basic Operation ..... 4

# 1. Replacement and Adjustment

## Tray Cover



1. Remove the tray cover [A] by pressing on the two pawls [B] on the left side of the cover.

### – When Attaching the Tray Cover –



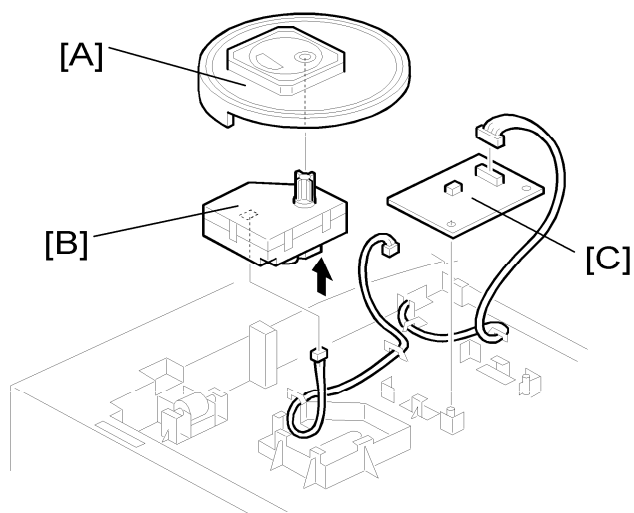
- The right side of the tray cover should be attached first.

1. Fit the pawls [C] on the shift tray.
2. Align the square [D] so that it fits into the groove in the underside of the tray cover and does not interfere with the attachment of the cover.
3. Complete the attachment by inserting the left side pawls [B] into place.

---

## Tray Motor and Half Turn Sensor Board

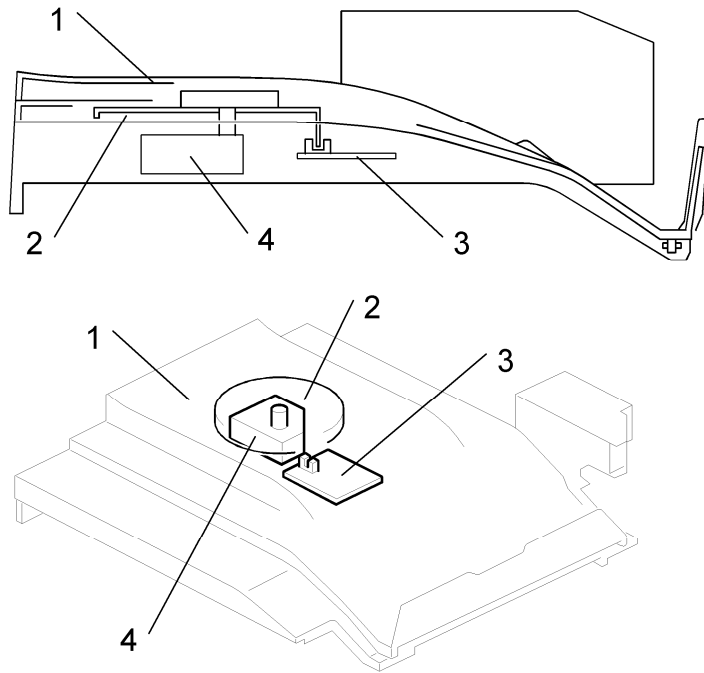
---



1. Slip disc [A]
2. Tray motor [B] (x 1)
3. Half turn sensor board [C] (x 1).

## 2. Detailed Descriptions

### Component Layout

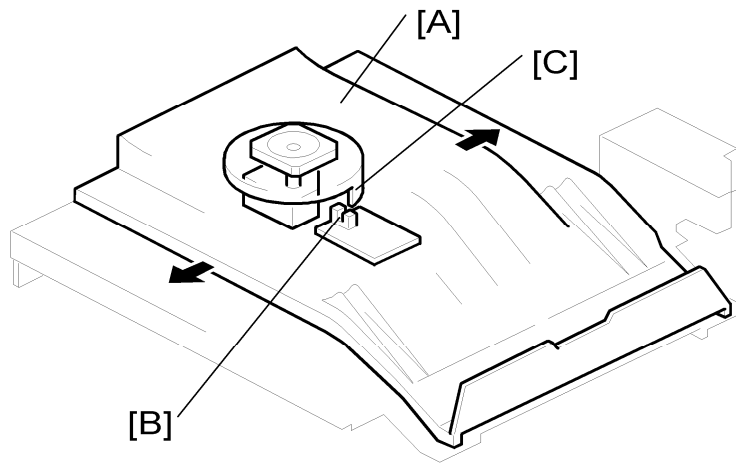


- 1. Tray Cover
- 2. Slip Disc
- 3. Tray Motor
- 4. Half Turn Sensor Board

---

## Basic Operation

---



The shift tray allows copies to be sorted into separate piles on one tray.

From the left-right movement of the tray cover [A], the piles of copies are offset into two positions, slightly overlapping one another.

The half turn sensor [B] detects the actuator [C] of the slip disc. As a result, the machine can determine if the tray is at the front side or the rear side.