

ONE-BIN SHIFT TRAY

(Machine Code: G554)

1. REPLACEMENT AND ADJUSTMENT

⚠ CAUTION

Turn off the main power switch and unplug the machine before attempting any of the procedures in this section.

NOTE: This manual uses these symbols.

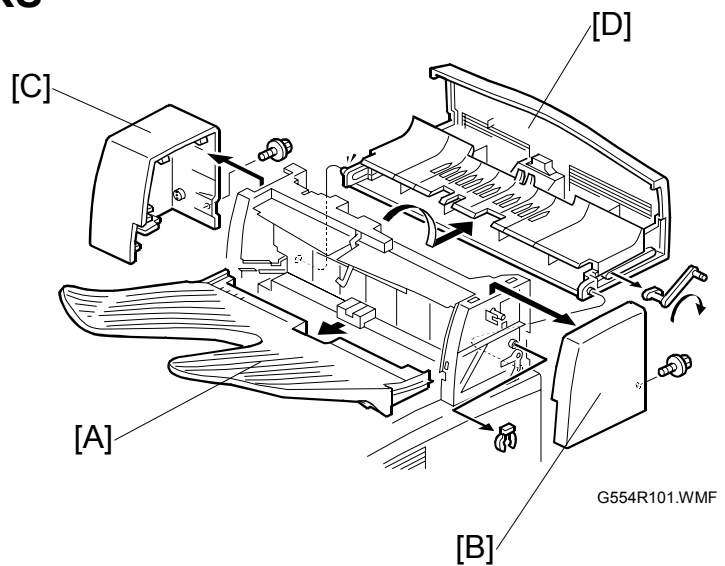
☞: See or Refer to

⚙: screw

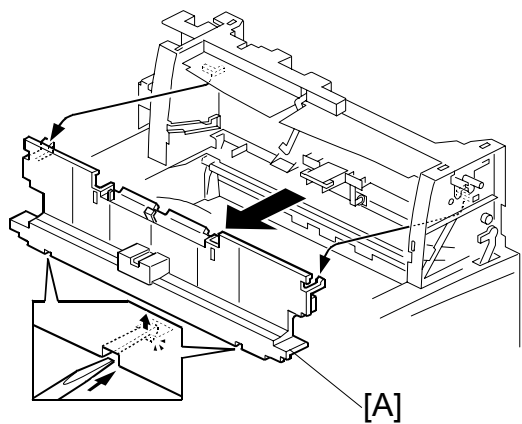
🔌: connector

1.1 EXTERIOR COVERS

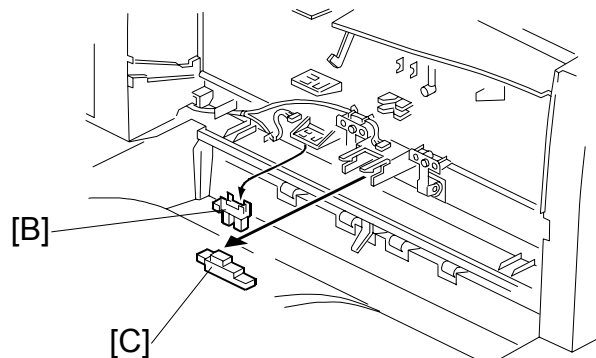
- [A]: Tray
- [B]: Right cover (⚙ x 1)
- [C]: Left cover (⚙ x 1)
- [D]: Upper cover (1 snap-ring)



1.2 SHIFT TIMING AND TRAY PAPER SENSORS



G554R102.WMF



G554R103.WMF

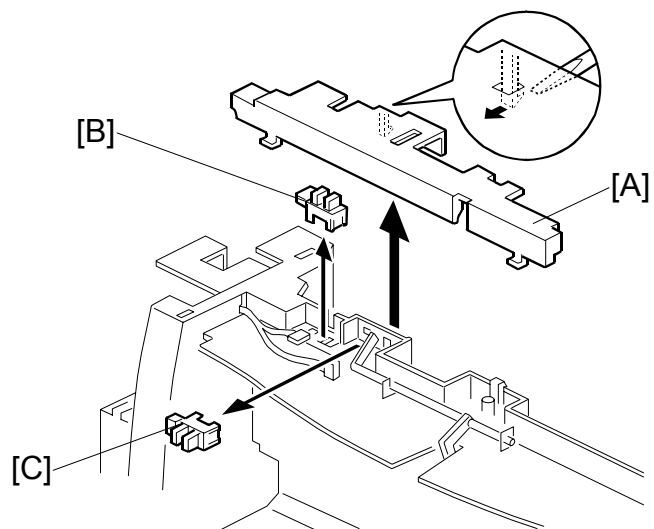
Right cover (☛ Exterior Covers)

[A]: Tray cover

[B]: Shift timing sensor (☛ x 1)

[C]: Tray paper sensor (☛ x 1)

1.3 COVER AND OVERFLOW SENSORS



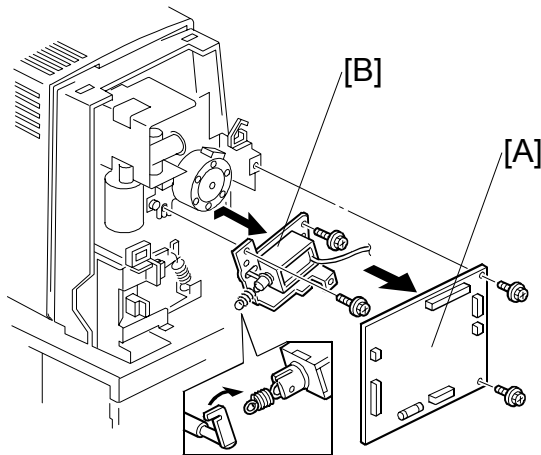
G554R104.WMF

[A]: Sensor cover

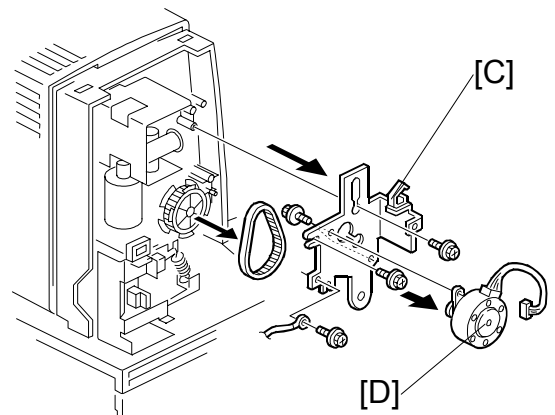
[B]: Cover sensor (☛ x 1)

[C]: Overflow sensor (☛ x 1)

1.4 MAIN MOTOR



G554R105.WMF



G554R106.WMF

Left cover (☛ Exterior Covers)

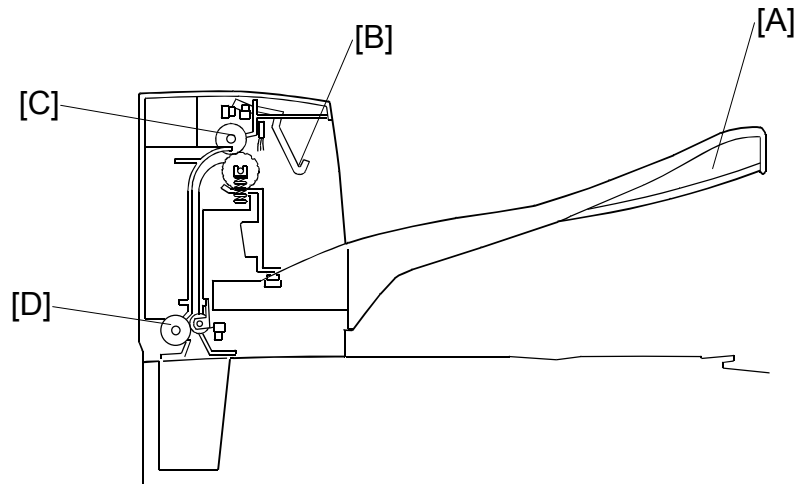
- [A]: Shift tray board (☛ x 2, ☛ x 6)
- [B]: Junction gate solenoid (☛ x 2)
- [C]: Main motor bracket (☛ x 3)
- [D]: Main motor (☛ x 2)

2. DETAILED DESCRIPTIONS

2.1 OVERALL MACHINE INFORMATION

2.1.1 MECHANICAL COMPONENT LAYOUT

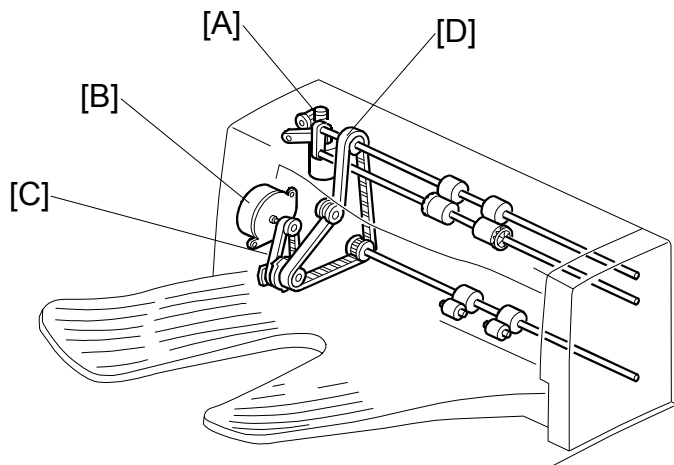
- [A]: Tray
[B]: Overflow sensor feeler
[C]: Exit roller
[D]: Transport roller



G554V101.WMF

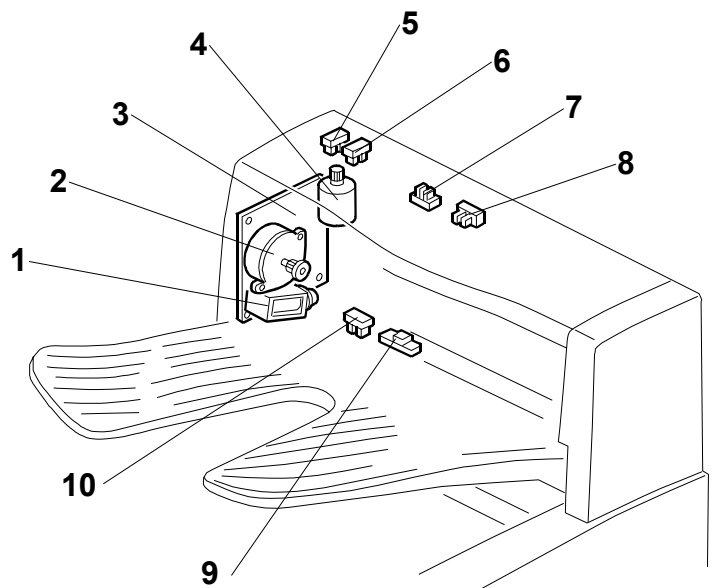
2.1.2 DRIVE LAYOUT

- [A]: Shift motor
[B]: Main motor
[C]: Main motor timing belt
[D]: Timing belt



G554V103.WMF

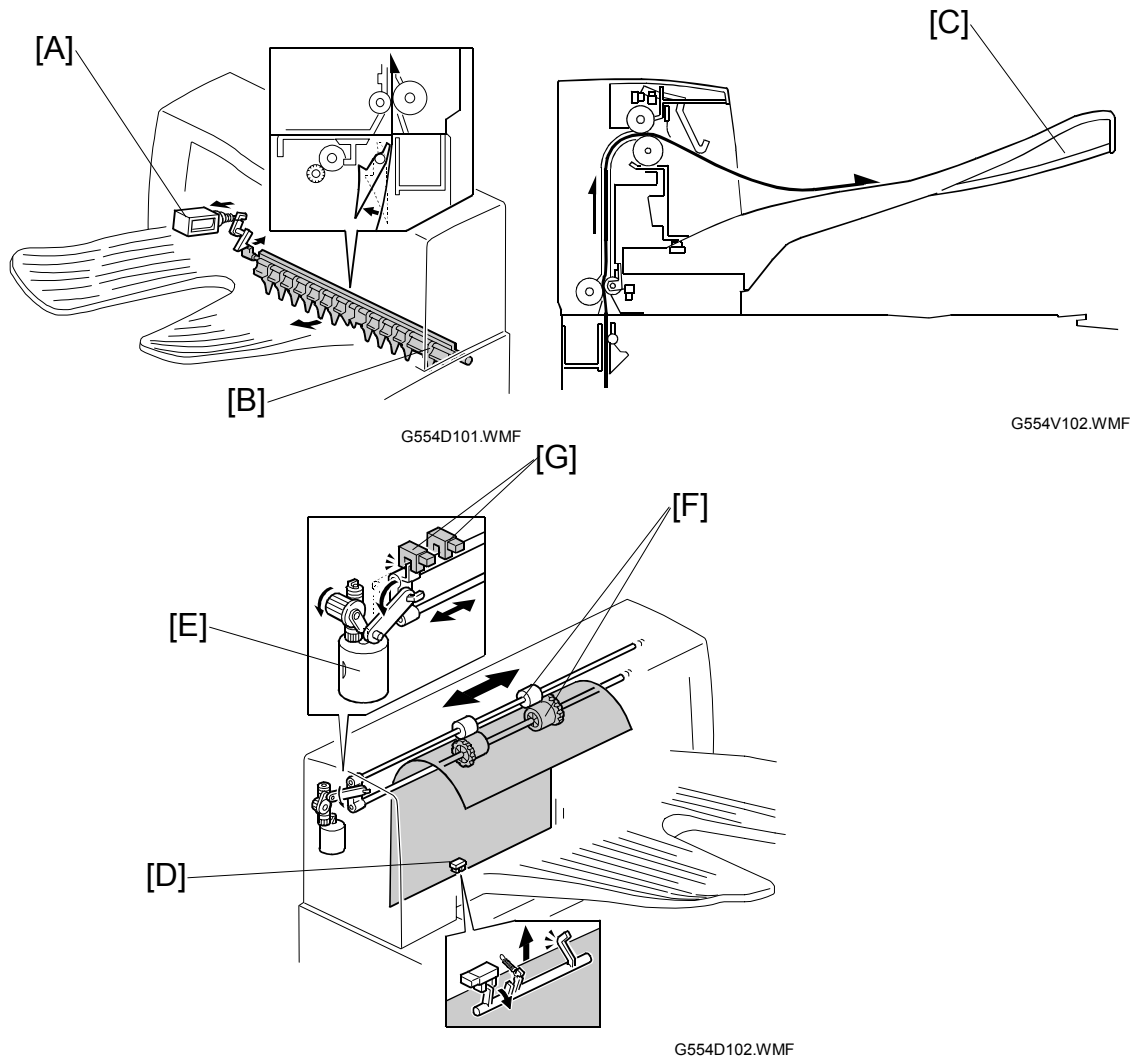
2.1.3 ELECTRICAL COMPONENT LAYOUT



G554V104.WMF

1. Junction gate solenoid
2. Main motor
3. Shift tray board
4. Shift motor
5. Left shift sensor
6. Right shift sensor
7. Cover sensor
8. Paper overflow sensor
9. Tray paper sensor
10. Shift timing sensor

2.1.4 BASIC OPERATION



- The solenoid [A] opens the junction gates [B] to direct the paper to the tray.

2.1.5 SORT MODE OPERATION

- When the trailing edge of each page passes the shift timing sensor [D], the shift motor [E] shifts the exit rollers [F] across. When the left or right shift sensor [G] detects the rollers, the motor stops, then returns the rollers to the center.
- Each page of the first set is shifted to one side, then each page of the next set is shifted to the other side. The rollers move back to the central position after shifting each page.