

# **RW-7140**

## **CLIENTS**

Reference

## **Trademarks**

Adobe®, Acrobat®, Postscript® and Postscript®3™ are registered trademarks of Adobe Systems Inc.

AutoCAD®, DWF, DWG, DXF are registered trademarks of Autodesk Inc.

LibCAD is based on AutoCAD® OEM and may only be used in conjunction with RW-7140 PLOTBASE

Apple, Macintosh, Mac, Mac OS and TrueType are registered trademarks of Apple Inc.

Microsoft®, Outlook®, Windows®, Windows Server™, Internet Explorer®, WMF are registered trademarks of Microsoft Corp. in the United States and/or other countries

Firefox is a registered trademark of Mozilla Foundation

PLOTBASE®, PLOTCLIENT® are registered trademarks of RATIO Entwicklungen GmbH

Calcomp is a registered trademark of Calcomp Inc.

CALS is a registered trademark of U.S. Department of Defense

CGM is a registered trademark of Henderson Software Inc.

CIT is a registered trademark of Intergraph GmbH

HPGL, HPGL/2, HP-RTL are registered trademarks of Hewlett-Packard Comp.

PCX is a registered trademark of Zsoft/Microsoft Corp.

Other product names used herein are for identification purposes only and might be trademarks of their respective companies. We disclaim any and all rights in those marks.

The proper names of the Windows operating systems are as follows:

Microsoft® Windows® 2000 Professional

Microsoft® Windows® Server™ 2003

Microsoft® Windows® Server™ 2008

Microsoft® Windows® XP Professional

Microsoft® Windows® Vista™

# Contents

<b>RW-7140 PLOTCLIENTS .....</b>	<b>6</b>
Manual conventions.....	8
Overview of options.....	8
User authentication.....	8
<b>Part I - RW-7140 PLOTCLIENT WIN .....</b>	<b>10</b>
<b>Introduction .....</b>	<b>11</b>
<b>Start and quit program .....</b>	<b>12</b>
<b>Program window .....</b>	<b>13</b>
<b>Devices.....</b>	<b>14</b>
Device information .....	14
Reload devices.....	14
<b>General settings.....</b>	<b>15</b>
"Spool path" tab.....	15
Set up first spool path .....	15
Set up other spool paths.....	15
"General" tab.....	17
Change language .....	18
<b>Job default settings and job correction.....</b>	<b>19</b>
Hierarchy of the settings.....	19
Job default settings .....	21
Job correction.....	21
<b>Job settings.....</b>	<b>23</b>
<b>Entry settings .....</b>	<b>28</b>
File information .....	33
<b>Pen settings .....</b>	<b>34</b>
Viewing the changes .....	35
VIC .....	35
DWF/DWG/DXF .....	35
HPGL/2 - Saving settings .....	37
HPGL/2 - Pens .....	37
HPGL/2 - General .....	38
HPGL/2 - Defaults .....	39

---

Calcomp - Saving settings .....	40
Calcomp - Pens .....	40
Calcomp - General .....	41
<b>Stamp editor .....</b>	<b>42</b>
Make stamp .....	43
Stamp configurations .....	43
Edit or delete stamp .....	44
"Settings" tab .....	44
"Data" tab .....	46
<b>Compile and plot jobs .....</b>	<b>49</b>
Compile new job .....	49
Edit existing job .....	50
Add entries .....	52
Add with button or menu item .....	53
Add using the right-hand mouse button .....	53
Add with Drag & Drop .....	54
Add multiple entries .....	54
Delete entries .....	55
<b>Part II - RW-7140 WINPRINT .....</b>	<b>56</b>
<b>Introduction .....</b>	<b>57</b>
<b>Modify print parameters and print .....</b>	<b>58</b>
<b>Part III - RW-7140 PLOTCLIENT HDI .....</b>	<b>64</b>
<b>Introduction .....</b>	<b>65</b>
<b>Modify print parameters and print .....</b>	<b>66</b>
"Main" tab .....	66
"Advanced" tab .....	69
"Options" tab .....	71
"Job data" tab .....	72
"About" tab .....	73
<b>Part IV - RW-7140 PLOTCLIENT WEB .....</b>	<b>74</b>
<b>Introduction .....</b>	<b>75</b>
<b>Start program .....</b>	<b>76</b>
<b>Administration .....</b>	<b>77</b>
Plot settings .....	77

---

Spool path setting .....	77
E-mail settings .....	78
Manage users.....	78
Global settings .....	80
Internationalization .....	80
<b>Compile and print jobs.....</b>	<b>81</b>
File formats .....	81
Workflow .....	82
Create and delete jobs.....	83
Create jobs.....	83
Delete jobs .....	83
Job status .....	83
Compile jobs.....	84
Edit entry files .....	85
Delete entry files .....	85
Quick view of entries.....	85
Job settings .....	86
Main settings .....	86
Detailed settings .....	89
Entry settings .....	91
Main settings .....	91
Detailed settings .....	92
Print jobs.....	97
<b>Device status.....</b>	<b>98</b>
<b>Part V - RW-7140 PLOTCLIENT MAC.....</b>	<b>99</b>
<b>Modify print parameters and print .....</b>	<b>100</b>
Main Options 1 .....	100
Main Options 2 .....	101
Job Options .....	102
<b>Part VI - Appendix.....</b>	<b>103</b>
<b>Index.....</b>	<b>104</b>

## RW-7140 PLOTCLIENTS

This manual explains the installation and operation of RW-7140 PLOTCLIENTS. You find out how you can use the RW-7140 PLOTCLIENTS or network protocols to produce print jobs, set print parameters and to send the print jobs to the RW-7140 PLOTBASE server program. The following PLOTCLIENTS are described:

- RW-7140 PLOTCLIENT WIN
- RW-7140 WINPRINT
- RW-7140 PLOTCLIENT HDI
- RW-7140 PLOTCLIENT WEB
- RW-7140 PLOTCLIENT MAC

The following shows which operating systems and clients are compatible and gives a brief explanation of all RW-7140 PLOTCLIENTS. The precise functional descriptions are given in the respective chapters:

Operating System	PC WIN	PC HDI	PC WEB [Client]	Winprint & INF file	PC MAC [PPD]
Windows Vista 32 bit	yes	yes	yes	yes	no
Windows Vista 64 bit	yes	yes	yes	yes	no
Windows XP Prof. 32 bit	yes	yes	yes	yes & INF	no
Windows XP Prof. 64 bit	yes	yes	yes	yes & INF	no
Windows 2000 Prof.	yes	yes	yes	yes & INF	no
Windows 2008 Server	yes	yes	yes	yes	no
Windows 2003 Server	yes	yes	yes	yes & INF	no
MAC OS 9.x	no	no	no	no	yes
MAC OS 10.2/.3/.4/.5	no	no	no	no	yes

### • RW-7140 PLOTCLIENT WIN

RW-7140 PLOTCLIENT WIN is a program for preparing plot jobs, which it then sends to RW-7140 PLOTBASE. This is done by collating set-based jobs.

### • RW-7140 WINPRINT

The Windows printer driver RW-7140 WINPRINT allows print jobs from Windows applications, to then pass them directly to RW-7140 PLOTBASE as a job.

- **RW-7140 PLOTCLIENT HDI**

With RW-7140 PLOTCLIENT HDI you produce HPGL/2-files from the drawings and documents, which have been produced in the AutoCAD programs AutoCAD R13 and R14, AutoCAD 2000, 2000i, 2000 LT, 2000 Lti as well as AutoCAD 2002 LT - AutoCAD 2009 LT and AutoCAD 2002 - AutoCAD 2009. The print jobs can be sent to the RW-7140 PLOTCLIENT WIN program or directly to the RW-7140 PLOTBASE server program.

- **RW-7140 PLOTCLIENT WEB**

The RW-7140 PLOTCLIENT WEB enables you to send print jobs to RW-7140 PLOTBASE both via the Intranet as well as via the Internet. You can stipulate numerous print parameters. Successful processing of the print processes in RW-7140 PLOTBASE can be controlled via a status message. Equally, you can also have an e-mail sent to obtain a message on successful job completion. To access the program you need a browser program. Use Mozilla Firefox 2.0 or higher or use Microsoft Internet Explorer 6.0 or higher. The browsers are supported on the operating systems as specified by the manufacturers of the browsers.

- **RW-7140 PLOTCLIENT MAC**

With the printer driver RW-7140 PLOTCLIENT MAC, you can send print jobs to RW-7140 PLOTBASE from applications, which run on the Macintosh operating system Mac OS.

## Manual conventions



**Note:** You are free to decide whether you wish to follow the recommendation given in a note or not. Notes are usually used to draw your attention to special circumstances or even to point out useful commands or ones that are easily forgotten and overseen.



**Attention:** It is advisable to take particular notice of any possible problems marked with "Attention" to e.g. avoid problems with your data stocks, etc

## Overview of options

The RW-7140 system offers the following options that you can purchase from your dealer:

- RW-7140 SCANTOOL ["Scan Option"]
- File formats DWF, DWG and DXF ["DWG/DXF/DWF Option"]
- File format CGM ["CGM Option"]
- File format PDF ["PS/PDF Option"]
- File format Postscript ["PS/PDF Option"]
- File format VIC ["VIC Option"]

## User authentication

The user authentication is described in detail in the RW-7140 PLOTBASE manual.

The RW-7140 system distinguishes between two methods of authentication. "Software authentication" is activated in RW-7140 PLOTBASE and requires users to log onto the RW-7140 Client PCs who have been entered in the user group of RW-7140 PLOTBASE with corresponding rights on the server PC. As a rule, you will not have to adjust any settings in the RW-7140 Clients! This is checked automatically by RW-7140 PLOTBASE.

The "machine authentication" is activated at the RW-7140 plot-



ter; authentication requires either a user name with password or a user code. Enter these authentication data in the RW-7140 Clients or enter them when the program asks you to. If you do not know your authentication data, please ask your administrator responsible for user management.

This manual draws your attention to authentication at all points where it is correspondingly necessary. As there are two different methods, these are explained at different points and not in a joint section.

---

## **Part I - RW-7140 PLOTCLIENT WIN**

## Introduction

This part of the manual describes the program RW-7140 PLOTCLIENT WIN. RW-7140 PLOTCLIENT WIN is available for Microsoft Windows 2000 / XP / Vista and is a program for preparing plot jobs, which it then sends to the server program, RW-7140 PLOTBASE. This is carried out by collating set-based jobs.

The client server architecture of RW-7140 PLOTBASE enables each connected user to define their print jobs and drawing sets themselves and to send them to RW-7140 PLOTBASE for output. The interface used between RW-7140 PLOTBASE and the Client is the Interpreter, which covers the Clients' information so that RW-7140 PLOTBASE can easily work through the set requirements.

## Start and quit program

- **Start program**

The installation program sets up its own program group with program symbols towards the end of the installation. To start RW-7140 PLOTCLIENT WIN, open it via the "Start" bar or double click on its program symbol.

- **Quit program**

You can either quit RW-7140 PLOTCLIENT WIN via the menu item "File - Exit" or with the usual Windows keyboard shortcut "ALT+F4".

## Program window

RSW-PlotClient WIN - Section: SLL

File Edit View Viewer Settings Help

Client48 \\Client48\spool

Property Value

Account 2

Collate Off

Combine Off

Contact

Cost Center

Customer

Delete Off

Distribution

Document Server Off

E-mail

Job Copies 1

Job Flag Sheet Off

Job Name Section

Locked Print Off

Notes

Output Device RICOH RW-7140

Output Tray Auto

Page Order Auto

Priority Normal

Project

Sample Print

User Name Admin

File Info

#	File Name	File Info	Copies	Size	Media Type	Picture Type	Fold
0	(default)	Unknown	1	100.00 100.00	don't care	Mixed	Off
1	A0-Sample4.plt	Size: 46.74x31.16 inch; C...	1	100.00 100.00	don't care	Mixed	Off
2	A1-Sample3.plt	Size: 33.04x22.03 inch; C...	1	100.00 100.00	don't care	Mixed	Off
3	A2-Sample3.plt	Size: 15.22x16.46 inch; C...	1	100.00 100.00	don't care	Mixed	Off
4	A3-Sample5.plt	Size: 16.25x11.60 inch; C...	1	100.00 100.00	don't care	Mixed	Off
5	A4-Sample1.plt	Size: 11.56x8.17 inch; Col...	1	100.00 100.00	don't care	Mixed	Off

Ready Unit: inch

## Devices

### Device information

The device information shows you the properties of the plotter and folder connected to the system:



If you wish to have further information on one of the configured outputs, first select a device. The "Tray Info" tab provides information on the name of the tray, the width, the medium, the current level and the type of tray (roll, manual feed). On the "Toner Info" tab you will the information on the colors available, the level of individual toners and toner waste.

When a plotter is switched off or if there is an error, the lines will appear on all three tabs in red. In normal mode, the information is shown in black.

### Reload devices

This command is used if devices have failed to initialize. In such a case let RW-7140 PLOTCLIENT run, switch on the other devices and once the devices have warmed up select menu item "File - Update device information" or click on the following button:



## General settings

Before you start with the work in RW-7140 PLOTCLIENT WIN, you must first set a few presets as e.g. determine the spool paths and the current valid unit or enter the job default values that are described in the following chapter.

### "Spool path" tab

#### Set up first spool path

During installation, RW-7140 PLOTCLIENT WIN automatically finds and adopts the plot server [RW-7140 PLOTBASE] with spool path and enters the data in the box under "auto". If your RW-7140 PLOTBASE runs with several spool paths, you can choose from the corresponding paths for the plot server in the "spool path" box.

But you only need to go to this dialog if you have either set up new or additional plot servers [with RW-7140 PLOTBASE] including the spool paths, or if you want to specify one of the spool paths as standard for your work.

For your current work, you can change the plot server and spool paths at any time directly in the program window directly under the menu bar:



**Note:** If you are using graphic programs in addition to PLOTCLIENT, save graphics not directly from the graphic program using the function "Save as" in the spool directory, because RW-7140 PLOTBASE accesses the graphic already during the saving procedure and this could cause processing problems. Use the Windows Explorer to save the files directly in the spool directory.

#### Set up other spool paths

You can make new or additional entries for plot servers and spool paths either automatically or manually:

**Automatic****• Plotserver / Spool path**

Proceed as follows to make automatic entries in the boxes "Plot server" and "Spool path":

1. Activate the option "Auto".
2. Click once on the box to the right of the box "Spool path".
3. In the next window, click on "New".  
The window "Server in network environment" opens.
4. Click once on "Update server list".
5. On the left in the server list, mark the new server and click on "Details" if you want to see the set up spool paths and connected output devices.
6. Click on "OK" to close the window.  
The additional plot server [RW-7140 PLOTBASE] is shown in the list.
7. If you also want to specify the new plot server [RW-7140 PLOTBASE] as standard for your current work, mark it now and click on "OK" to close the window "RW-7140 PLOTCLIENT WIN Options".

**Manual****• Job spool path (UNC)**

Here you set the folder manually, in which RW-7140 PLOTCLIENT WIN sends the jobs for RW-7140 PLOTBASE. As the two programs usually work together via network, the folder for RW-7140 PLOTCLIENT WIN lies on another drive than RW-7140 PLOTBASE sees it. Enter spool path as UNC path as follows:

1. Activate the option "Manual".
2. Click once on the button next to the box "Spool path".
3. Change to the PC where the plot server [RW-7140 PLOTBASE] is installed.
4. Select the spool path set up there and click on "OK" to confirm.
5. If you want to specify the new plot server [RW-7140 PLOTBASE] as standard for your current work, click on "OK" to close the window "RW-7140 PLOTCLIENT WIN Options".

**• Server IP or server name**

You must enter the IP address of the server in that case either



the spool path is on another PC than on the server PC or you do not have the possibility to enter an UNC name as the spool path.

- **ZIP archive path**

RW-7140 PLOTCLIENT WIN can compress your jobs. To do so, activate the left option "Archive" above the "ZIP archive path" entry, where you can select the directory for saving the compressed jobs. Your jobs are automatically compressed in the zip format. If after sending a print job you want to see the path with the zip file, activate the "Show zip path after creation" option.

Information concerning the output devices connected to the RW-7140 PLOTBASE can be obtained by clicking once on the following info-button:



## **"General" tab**

- **Units**

On this tab you set the size unit that is to apply for all work with RW-7140 PLOTCLIENT WIN. You can choose between "Pixels", "Millimeters" and "Inches".

- **Work directory**

As second setting, enter the work directory here which is to be used when working with the RW-7140 PLOTCLIENT WIN, if you do not want to use the default. The default is "C:\ Documents and Settings\ [user]\ My Documents\ [Print job]".

The directory "[Print job]" contains the drawing files, while the corresponding SSL file is stored in the higher "My Documents" directory.

## Change language

When starting the program for the first time, your RW-7140 software comes up in the language you selected on installation of the program.

But if you want to change the language of the program, you can do that quickly and easily in three steps in Windows without any further adjustments:

1. Open the language setting using the menu point "Settings - Language".
2. Adjust the required language and press "OK" to confirm.
3. Start your RW-7140 program again.

If you always want the program to appear in the language set as standard for your Windows operating system, under step 2 you should select the option "System" with the globe instead of a language.

## Job default settings and job correction

The array of settings explained in the previous chapter can be defined as default settings for all following compiled print jobs and print jobs can be corrected to comply with these default settings via mouse click.

### Hierarchy of the settings

Settings for print jobs and their allocated entries i.e. drawings, can be carried out in four different parts of the program:

- In the **Menu**  
Default Settings via the Menu item "Settings - Job default settings"
- In the **Job properties**  
Setting of the properties of a print job via the blue-and-white "Job properties" on the top left
- In the **Entry list**  
Setting of the "O(default)"-settings in the first line of the blue-and-white entry list in the middle of the program
- In the **Entry list**  
Execution of individual settings from the second line onwards in the blue-and-white entry list in the middle of the program

The "Job default settings" carried out via the menu item "Settings", are valid for all newly started print jobs.

All default settings carried out here will appear both in the blue-and-white list of "Job Properties" of a new job as well as in the "O(default)" settings for new entries in the entry list.

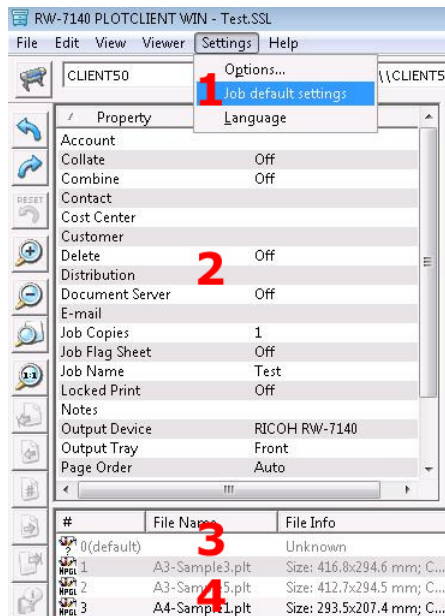
In as far as these default settings are not changed individually, they are valid for each currently open print job and its allocated entries.

The "O(default)" settings in the first line of the blue-and-white entry list are valid for all new entries that are added after a setting and are listed from the second line onwards.

The individual settings that you carry out for all entries from the second line onwards are valid exclusively for the entry concerned.

The hierarchy is easy to remember:

Ranking of importance follows in three steps from top to bottom - the settings made at the very top (Settings - Job default settings) have the biggest effect, the settings on the very lowest level (individual settings) have the least effect - they are also ordered in this way on the program interface:



The settings in "Job default settings" [see "1"] are the defaults for "Job properties" [see "2"] and entry default settings "0(default)" [see "3"].

The settings in "Job properties" [see "2"] and "0(default)" [see "3"] are the defaults for "Entry properties" [see "4"].

No settings in either 4, 3 or 2 have any effect on the next highest settings in the hierarchy.

## Job default settings

The job default settings are opened via the menu item "Settings - Job default settings".

The default settings are valid for all newly started print jobs.

Default settings are made both in the list on the left as well as in the line on the right.

The optical order of the default settings is the same as in the program interface and can therefore be allocated quickly. You will find the same default settings from the list on the left in the job properties located on the left of the program interface. The same default settings in the line on the right are found in the top line of the entry list.

Please look for the explanations of the individual default settings in the two consecutive chapters "Job editing" and "Entry editing".

## Job correction

The job correction is a useful function in that it informs you automatically if your own settings are not compatible with those of the connected devices.

It is indicated to the user, for example, that his medium setting [e.g. "Transparent"] is not available and a suggestion for correction is given simultaneously [e.g. "Paper"].

Use the following commands to close the window "Job correction":

- **Fix settings**

This command changes your setting to the alternative proposed by the program.

- **Undo**

This command is only active after a setting has been entered. It cancels only your last entry.

If you close the window with "Do not correct" after entering a setting to which the program responds with a correction proposal, your last entry in this dialogue can no longer be undone. The button is then deactivated.

- **Do not correct**

This command closes the job correction window without making any changes to your setting. However, to ensure that you always know when an entered setting is not supported by the peripheral equipment, the program will display the possible source of error in orange. In addition to that the job correction button is activated:



## Job settings

The job settings are located at the top on the left of the RW-7140 PLOTCLIENT WIN program interface. Global settings are made here, that should be valid for the whole print job including all its individual entries.

The settings available in RW-7140 PLOTCLIENT WIN depend in part on whether anything has been preset in RW-7140 PLOTBASE and what this might be. Defaults for most of the fields, from which you can make your selection, may be set there. If in addition one of the default fields in the RW-7140 PLOTBASE has been allocated as an obligatory default value for the RW-7140 PLOTCLIENT WIN, these will appear here in orange! Each of the fields that could be concerned is mentioned accordingly in the following.

- **Account**

The account number of the customer is entered here. This can be an account number that is allocated in-house or an in-house invoice recipients. This field can have a default allocated by RW-7140 PLOTBASE!

- **Collate**

There is no point in activating this function unless you wish to generate one or more copies of a print job (see "Job copies"). Here you can specify how the entries for these print job copies are to be output. The following example explains how this is done:

Two copies of a print job are to be generated. The print job contains the entries A, B and C. If the function is activated ("On") the copies are printed out in the sequence A, B, C - A, B, C. If the function is deactivated (off), the copies will be printed out in the sequence: A, A - B, B - C, C.

- **Combine**

"Combine" refers to grouping together drawings for joint print-out on one single sheet.

**Quantity:** Adjust how many pages you want to print on the sheet. There is a choice of 2, 4, 8 or 16 pages.

**Format family:** Choose the format group in order to have a clear overview in the "Format" selection.

**Format:** Enter the size of the sheet of paper where the individual pages are to be printed together. Custom paper sizes are not supported for the feature "Combine"!

**Media type:** Use this selection menu to choose the media type for printing the summarized pages: any, paper, transparency, film and environment paper. The choice depends on what you have put on the rolls of your plotter.

**Print quality:** Use this selection menu to choose the quality of the print out: draft, standard, highest.

**Media source:** If you choose the "auto" setting, the plotter chooses the medium supply corresponding to the format size of the drawing. If this medium has been used up, the plotter chooses the roll with the next larger format. You can use the manual feed option to insert a special medium in the plotter. The print job is marked blue in the job list.

**Direction:** Finally, indicate the order for printing the individual pages on the sheet. The "Z" direction prints the pages line by line arranged from left to right until the line is full, before beginning with the next line. The "I" direction arranges the pages in columns from top to bottom until the column is full, before beginning with the next column.

▪ **Contact**

A contact option for a print job can be made in this field if, for example, queries should arise during printing. This field can have a default allocated by RW-7140 PLOTBASE!

▪ **Cost center**

Here you can enter a cost center information. This field can have a default allocated by RW-7140 PLOTBASE!

▪ **Customer**

This is the name of the customer for whom the plot job is being carried out. This field can have a default allocated by RW-7140 PLOTBASE!

▪ **Delete after plot**

If you activate this option, the job will be deleted after printed out.

• **Distribution**

In this field you can enter who is to receive a copy of the job.



- **Document server**

If the corresponding job is not to be printed directly but sent to the plotter's document server, activate the function with "on". Your job can contain several drawings and depends on how much memory is available in your plotter's document server. Consult your plotter manual for details if necessary:

**File name:** Give an unequivocal file name to the job being sent to the document server.

**User name:** This additional information is particularly useful if several users send jobs to the document server.

**Password:** If you only want your job to be printed on the plotter by you, you can protect it with a password. As soon as the plotter selects the print command for the corresponding job, the plotter will demand the password stated here.

- **E-mail**

Entering an email address you can instruct the program to automatically send an email to the user on successful completion of the print job, as for example to "jobcreator@email.com". This field can have a default allocated by RW-7140 PLOTBASE!

- **Job copies**

Here you can specify how many copies of the job shall be printed.

- **Job flag sheet**

The job flag sheet is printed out together with the job. It lists all the job settings. You can also add further notes on the job in a text window which opens automatically as soon as this function is activated. In order to activate or edit the text of a job flag sheet, double click the line "Job Flagsheet" and select "Text" from the menu.

- **Job name**

This is where the name of the plot job is displayed, which the user has selected.

- **Locked print**

By activating the property, a dialog is displayed in which the user is requested to enter a password twice. After this, the print out can only be started at the server RW-7140 PLOTBASE, if the correct password has been entered. For the password, more

than 32 characters can be accepted, however, it is recommended to use 4 to 32 characters!

- **Notes**

This field is free for you to make comments. You can enter a maximum of 60 characters. This field can have a default allocated by RW-7140 PLOTBASE!

- **Output device**

Here you select one of the plotters on the system.

- **Output tray**

Depending on the connected plotter, here you can select output at the "top, bottom" or "front, rear, rear hold".

If you select the "Auto" setting, the plotter chooses the media source, which matches the format size of the drawing. Should this input tray be empty, the plotter uses the tray (roll) with the next largest format. The option "bypass tray" can be used for putting in a special medium like thick or colored paper. The job will be marked blue in the job list.

- **Page order**

But the sequence of printouts in the output stack depends not only on the printing sequence but also on the output the plotter is using. Some plotters have two outfeeds. The plotter may internally again rotate the printouts for the front or the rear outfeed. You should therefore check how the documents emerge from these two outfeeds as standard - see the option "Standard":

**Auto:** On this setting, the drawings are held in the outfeed in the sequence specified in the job editor (1,2,3,4,...). This is irrespective of whether you have selected the "front" or the "rear" outfeed.

**Standard:** On this setting, the drawings are printed out in the sequence specified in the job editor (1,2,3,4,...). The sequence in which they are finally held in the output stack depends upon the outfeed. If you only have one outfeed, the drawings will normally be in the same order (1,2,3,4,...) in the output stack. A second outfeed may reverse this order (...4,3,2,1). The actual result will depend upon the model of plotter used.

**Reverse:** The jobs are printed out in reverse order to that specified in the job editor (...4,3,2,1). If you only have one outfeed, the drawings will normally also be in reverse order

(...,4,3,2,1) in the output stack. A second outfeed may restore this to the original sequence (1,2,3,4,...). The actual result will depend upon the model of plotter used.

- **Priority**

Choose the priority, that is to be applied by RW-7140 PLOTBASE to print the job: wait, low, normal, high, immediately. If you do not assign a priority, the job is assigned the priority "normal".

- **Project**

Here you can enter a project to which the plot job belongs. This field can have a default allocated by RW-7140 PLOTBASE!

- **Sample print**

Activate this option, if you wish to test the quality of a print. Only the first set of copies is printed. The print out of further sets of copies is stopped so that you can check the quality of the print. You are then asked, whether you wish to continue or abort the plot.

- **User name**

This field displays the name of the employee who has compiled the plot job and sent it for printout. You can enter a maximum of 40 characters. This field can have a default allocated by RW-7140 PLOTBASE!



**Note:** If the "Software authentication" is activated in RW-7140 PLOTBASE, the field "User Name" is deactivated here; RW-7140 PLOTBASE automatically takes the user name for this field from the user logged on to the operating system. If this user name does not correspond to one of the users set up in the user group "PLOTBASE Users" on the server PC, the print job is not carried out. In this case, ask your administrator responsible for user management and for whom corresponding authentication instructions are available in the RW-7140 PLOTBASE manual.

## Entry settings

The entry settings are located in the middle of the RW-7140 PLOTCLIENT WIN program interface. Individual settings are made here, that should be valid for a single entry, i.e. drawing.



**Note:** The system has been tested with up to 100 job entries. Although the system technically accepts more entries, we recommend to limit the number of documents to a maximum of 100 entries to ensure a smooth work flow.

- **Border**

If you want a white border around the drawing, activate the field "On" and enter the required spacing for all borders.

- **Copies**

Here you can specify how many copies of the drawing are produced.

- **Cut mode**

If you select "Synchro", the plotter will cut off the image immediately after the last data. The use of paper or rather the medium is thus optimized because only a minimum of waste cuttings is created.

If, on the other hand, you always wish the printout to be cut in a standard format, regardless of how much space remains unprinted, then select "Format". The plotter will thereby receive the command to cut according to the next largest format.

- **File info**

Here you will see the drawing size. If you require more details, select the context menu item "Document Information" or the icon with the "i" for "Information".

- **File name**

This is the file name. It cannot be altered.

- **Fold**

If a folder is connected, the device's various fold programs will be selectable here.

- **Invert**

If you activate this option, the drawing will be inverted, i.e. black will appear as white and vice versa.

- **Media position**

Here you can specify the position of the printout on the paper if the image is to be printed on a larger paper format. In the "auto" setting, the drawing will be placed top left.

- **Media type**

Use this option to select which type of media the drawing is to be printed on: Don't care, Plain paper, Translucent, Film or Recycled paper.

- **Media source**

Here you can select the trays in which the rolls with the different printing materials (plain paper, film, etc.) are located.

If you select the "Auto" setting, the plotter chooses the media source, which matches the format size of the drawing. Should this input tray be empty, the plotter uses the tray (roll) with the next largest format. The option "bypass tray" can be used for putting in a special medium like thick or colored paper. The job will be marked blue in the job list.

- **Mirror**

In this area you can specify whether the drawing is to be mirrored or not during plotting:

OFF:      The drawing is not mirrored during plotting.

X:        The drawing is mirrored horizontally.

Y:        The drawing is mirrored vertically.

XY:       The drawing is mirrored about both axes  
            simultaneously; equates to a 180° rotation.

You usually use these settings if the drawing has been scanned and saved with a mirror inversion. This is especially important if a vellum has been scanned with mirror inversion to increase the contrast.

- **Page range**

For multi-page files, here you can state which pages of the file are to be printed when not printing the whole file. As well as stating a page range "from .. to", you can also use the "Print" list to add whether all pages, only the even numbered or also the

odd numbered pages in this range are to be printed.

- **Pen settings**

The pen settings for Calcomp, DWF/DWG/DXF, HPGL and VIC are so extensive that they are described separately in their chapters with the same names.

- **Picture type**

This setting applies exclusively to HPGL files. Try out which setting achieves the best printing result for the image concerned. You have a choice of "mixed", "line art" or "graphic art".

- **Print quality**

Depending on the significance of the printout, here you can select three possibilities for the quality of your printout: draft, standard, and high.

- **Rotate**

Here you can specify whether the drawing is to be rotated or not during plotting. Rotations of 0°, 90°, 180° and 270° are possible. When set to "Auto", RW-7140 PLOTBASE will automatically rotate the drawing if this will result in less waste paper.

When you print a document which is shorter than the minimum folding length of your folder with activated folding, PLOTBASE tries to bypass the restrictions of the folder possibly by turning the document. As a result, the document is turned when printed. If you do not want this, switch the rotation function from "auto" to 0°.

- **Size**

**Original:** The "Original" entry is preset. Here, the medium size corresponds to the original drawing file.

**Format:** The "Format" setting presents you with drawing formats that are standard throughout Europe, in Asia and the USA, namely ISO A, ANSI A-E, Asia and ARC A-E, in addition to a number of special formats.

**Window:** If under "Format", you preselect one of the standard sizes ISO, ANSI or ARC, the format data will automatically be entered in the fields under "Window". This makes changing easier when the change differs only slightly from the standard format:

First select the required size under "Format". Now select the op-

tion "Window". Change the entries. The drawing will automatically be changed to match the size of the medium, i.e. the drawing length and width will be continuously scaled until it matches the selected medium. The result may be a distortion of the drawing. In order to prevent this, activate the option "Proportional". This will reduce or enlarge the drawing overall whilst at the same time retaining its length to width ratio.

**Percent:** If you want to scale the drawing set the format to "Percent". In this case, the "Scale" input fields are activated and you can enter any values between 1.0 and 1000.

▪ **Source color profile**

**"Unprofiled (for target print)":** No color calibration will be used.

**"Server setting":** With this option, RW-7140 PLOTCLIENT WIN uses the color profile which you stated in RW-7140 PLOTBASE under "Configuration - Settings - Input profiles" for the printout of a file.

**"From image file":** Some graphic formats include the color profile details with the graphic file. You can activate this option if you have this kind of graphic format.

**"Use ICC profile file":** If you select this option, in the following line you must state the color profile which is to be used. This color profile is then only used for the drawing being processed here.

**"From the image file, if available else specified profile":** Some graphic formats such as "jpeg", "tiff", "ps" and "pdf" include the color profile details with the graphic file. If you have this kind of graphic format and the color profile details are available, RW-7140 PLOTCLIENT WIN will access this color profile. But if the color profile is not available, the color profile "Stated" in the dialog is used. However, if you have not "Stated" a color profile, RW-7140 PLOTCLIENT WIN then uses the default color profile entered in RW-7140 PLOTBASE under "Configuration - Settings - Input profiles". This option is suitable for example as default for jobs whose input i.e. picture files partly contain the color profile or which are partly without this information because of the format.

**"Closed loop":** This special color profiling is used only by Scan-tool.

**"Best color match"**: The default print quality on a color inkjet - without using any profiles – usually gives poor results. To improve this some basic method for color adaption is used. The method depends on the inkjet plotter type. As a rule of thumb, this gives best results in cases when no ICC profile is available.

- **Stamp**

The stamp editor is so extensive that it is described separately in its chapter with the same name.

- **Title block**

As many folders expect the title block to appear at different positions on the drawing, this feature allows you to adjust the title block on the folder so that, after folding, it is uppermost.



## File information

Mark the desired image in the entry list and click on the button with the "i" for "Information".

For most file formats you can only see the "General" tab. This tab contains information about the drawing format, size and number of colors.

The tabs "[Format] General" and "[Format] Pens" appear only, if you open a HPGL, Calcomp, DWG/DWF/DXF and VIC drawing file. The "[Format] General" tab contains information on general pen settings (pen source, pen scaling, filling samples) which you can change in the job editor.

The "[Format] Pens" tab informs you of the pen settings. The red exclamation marks indicate that the pen is used with several pen sizes and only the last set pen size can be shown. The green check mark shows, that a pen is used for the current drawing.

## Pen settings

Select from the entry list the required entry for which you want to change the pen settings, and double-click on "details" in the entry line under the appropriately named column. Open the default settings in the "0(default)" line in exactly the same way:

Output Bin	Pen Settings	Stamp
auto	details...	off
auto	details...	off
auto	details...	off

The pen settings can be changed on three levels. Firstly in the default settings via the menu item "Settings - Job default settings" or in the entry list in the "0(default)" settings and thirdly in the entry list of each entry itself. Always bear the following in mind in the case of "Job default settings":



**Note:** Changes in the job default settings only ever effect new print jobs that still have to be compiled. Print Jobs that are being processed currently retain their settings.

It should be noted that the following always applies for the "0(default)" settings in the first line of the entry list:



**Note:** In all cases, changes to the "0(default)" settings relate to newly added entries only. Existing entries already in the job retain their settings.

## Viewing the changes

As an additional function, when changes have been made to a particular entry, RW-7140 PLOTCLIENT WIN provides a facility for viewing the changes to pen thicknesses and, to some extent, also pen colors, in the File view before printing. To do this, proceed as follows:

1. Activate the view under "View - File view" in the menu.
2. Select an entry in the entry list.
3. Open the settings by double-clicking on "details" in the entry list.
4. Change to "Pens" tab and activate "User defined" as pen source and color source.
5. Make your changes.
6. Quit the pen settings clicking "OK".
7. Click on the entry you have just changed.

The changes will be visible in the File view. Remember that you may have to enlarge the view if you have only made minimal changes to the pen thickness, for example.

## VIC

The pen settings for the VIC format are almost the same as the settings for the HPGL[2] format. For the possible settings, please therefore read the following tabs to see the pen settings for "HPGL and HPGL/2".

## DWF/DWG/DXF

The pen settings for DWF, DWG, DXF formats are almost the same as the settings for the HPGL[2] format. For the possible settings, please therefore read the following sections to see the pen settings for "HPGL and HPGL/2".



**Note:** To get previews of DWF, DWG and DXF files you must have installed LibCAD on the client PC. A corresponding activation option has been offered dur-

ing installation! To print DWG files, you must have installed the "DWG/DXF/DWF Option" on the PLOTBASE server PC.

## HPGL/2 - Saving settings

You can specify numerous pen characteristics on the HPGL/2 tabs, which RW-7140 PLOTCLIENT WIN saves to an HPGL configuration file (\*.hcf).

If you want to create a new configuration file, simply make your new settings on the tabs and save them with "OK". If you want to use particular settings again later, as a template, for example, you can save these under an unambiguous file name such as "hpglcopy.hcf":

1. Make your changes and click once on "Save".
2. Select the required folder and specify a file name. The file ending is ".hcf" and must be retained!
3. Confirm your entries with "OK".

## HPGL/2 - Pens

- **Pen source - Width**

If you activate "File", the pen size details are taken from the plot file being printed. However, if no settings were provided here, the plotter uses the standard defaults on the "Defaults" tab. If you activate "Custom", the printout uses your settings from the first tab "Pens".

- **Pen source - Color**

Same as "Pen source - Width" but applied to the pen colors.

- **Custom Pens**

### **Width**

Enter the pen size directly from the keyboard. If you want to "switch off" a pen, you can enter "0" as pen width.

### **Color**

Either click on the color button or enter the RGB values directly. If you want to "switch off" a pen, you can enter "white" as pen color.

- **All - Set**

To make your settings applicable to all pens, conclude the process by clicking once on "Set".

## HPGL/2 - General

- **Size**

The information on the current image size is supplied by a command in the vector file, e.g. in HPGL from the "PS" command ["plot size"]. The application generating the file is responsible for ensuring that all vectors really correspond to the adjusted size and that the adjusted size is also as large as expected.

Most plotter languages differ from each other in many ways; this includes the paper size. As a result unwanted print results may be obtained.

If you activate the option "File", the drawing is printed exactly as it was produced in the original application.

If you activate the option "Auto", RW-7140 PLOTCLIENT WIN automatically stipulates the size of the area to be printed on the basis of the outermost pixels of the drawing data so that no white margin is generated.

- **In case of scaling**

Activate the check box, if the pen widths are to be scaled with the drawing. To avoid possible loss of information during the printout, you must ensure that you have entered a minimum pen width.

- **Pen limits**

**Minimum**

The selected pen thickness must be large enough to reliably print single pixels.

**Maximum**

Analog to the setting for minimum pen thickness, here you can stipulate the maximum thickness which a pen should draw.

## HPGL/2 - Defaults

The settings on this tab are the standard defaults. They are only used if you have activated the "File" setting for "Width" and "Color" on the "Pens" tab but the corresponding plot file has no details on pen thickness and pen color!

If instead of these presets you want to use individual settings for your current print jobs, you must activate "Custom" on the "Pens" tab.



**Note:** The settings on this tab have global significance for this tab. Even if they are only adjusted as standard default for one single print file, they still apply to every other print file of this type! These plotter settings can be adjusted separately for all following file formats: HPGL[2], VIC, DWF, DWG and DXF.

- **HPGL/1 standard**

Corresponds to the standard values of an HP DesignJet 1055.

- **Black and White**

The printout is produced in black-and-white. Any possible grey shades are ignored. But the pen size can be changed.

## Calcomp - Saving settings

You can specify numerous pen characteristics on the Calcomp tabs, which RW-7140 PLOTCLIENT WIN saves to a Calcomp configuration file (\*.ccf).

If you want to create a new configuration file, simply make your new settings on the tabs and save them with "OK". If you want to use particular settings again later, as a template, for example, you can save these under an unambiguous file name such as "calcompcopy.ccf":

1. Make your changes and click once on "Save".
2. Select the required folder and specify a file name. The file ending is ".ccf" and must be retained!
3. Confirm your entries with "OK".

## Calcomp - Pens

- **Pen source - Width**

If you activate "File", the pen width details are taken from the plot file being printed. If you activate "Custom", the printout uses your settings from below on this tab.

- **Custom Pens**

### **Width**

Enter the pen size directly from the keyboard. If you want to "switch off" a pen, you can enter "0" as pen width.

### **Color**

Either click on the color button or enter the RGB values directly. If you want to "switch off" a pen, you can enter "white" as pen color.

- **All - Set**

To make your settings applicable to all pens, conclude the process by clicking once on "Set".



## Calcomp - General

- **Pen limits**

### **Minimum**

The selected pen thickness must be large enough to reliably print single pixels.

### **Maximum**

Analog to the problem with the minimum pen widths, you can set the maximum thickness that the pen should draw.

- **In case of scaling**

Activate the check box, if the pen widths are to be scaled with the drawing. To avoid possible loss of information during the printout, you must ensure that you have entered a minimum pen width.

- **Synchronization**

Synchronization is used to check the completeness of the Calcomp files. Four pieces of information are used for the synchronization settings:

- Sync char
- End char
- Double Sync
- check sum

You can either let RW-7140 PLOTCLIENT WIN determine the values or you can enter the necessary settings yourself. If the program is to determine the values, activate "Autodetection".

We recommend that you do not alter the standard values if you want to enter the settings yourself. Should you nevertheless want to make a change or to find out more on the topic, compare the settings with those in your CAD system or read the following section in the "Calcomp Inc." manual:

"Calcomp - Online Reference Manual" in the section "Data Message Format".

## Stamp editor

The stamp settings for a current entry can be opened in the entry list in the column "Stamp" with a double click on "off" or "details" depending upon whether settings have already been made or not:

Output Bin	Stamp	Pen Settings
auto	off	details...
auto	details...	details...
auto	off	details...
auto	off	details...

The stamp settings can be changed on three levels. Firstly in the default settings via the menu item "Settings - Job default settings" or in the entry list in the "0(default)" settings and thirdly in the entry list of each entry itself. Always bear the following in mind in the case of "Job default settings":



**Note:** Changes in the job default settings only ever effect new print jobs that still have to be compiled. Print Jobs that are being processed currently retain their settings.

The following must always be borne in mind for the "0(default)" settings in the first line of the entry list:



**Note:** Changes in the "0(default)" settings only ever effect new entries that are added. Entries that already exist in the print job retain their settings.

## Make stamp

Proceed as follows to configure a new stamp:

1. The first stamp entry is provisionally set to "000". Click on the following symbol to edit the stamp setting:



2. You can now delete the existing setting and enter your own for the first stamp.
3. You can now either enter your own settings for the stamps, as described in the following chapters or use an existing stamp configuration. For the latter, click on the "Open" button under "Configurations". Now select a configuration that you have saved previously (read the following section "Stamp configurations") from the file selection. Now save this configuration by clicking on the button with the same name; i.e. "Save". This configuration is now saved under the marked stamp name in the "Select Stamp" window.
4. You can produce as many stamps as you wish for a drawing. If you now also want to configure an additional new stamp, click on the following button:



5. Enter a name and set the desired configurations, as already described under Step 3.

## Stamp configurations

The stamp settings are usually saved for specific entries. This means that these settings apply for one entry only or for a limited number of entries. However, you can also save a stamp configuration in its own "Stamp file". It can then be used at any time as default for a new stamp, which you would like to use for other entries.

The stamp files have the file extension [\*.stp]. It is advisable that

this extension always be retained.

Should you want to start the configuration, you must use the "Open" button. The "Open", "Save as" and "Overwrite" old stamp files steps are the same as those used in general file management.

## Edit or delete stamp

If you want to make changes to the stamp configurations, first click on the correct stamp in the "Select stamp" window and then change the settings. If you now change to another stamp or close the window by clicking on "OK", all the settings are saved.

To delete a stamp, first mark it and then delete it by clicking on the following button:



## "Settings" tab

- **Mirror**

The standard orientation of the text is always "as read". You can mirror the text here in four ways:

- None: The text is not mirrored and is "as read".
- X-mirror: The text is mirrored horizontally.
- Y-mirror: The text is mirrored vertically.
- XY-mirror: The text is mirrored about both axes simultaneously, which equates to a rotation of 180°.

- **Rotation**

The standard orientation of the text is always "as read". Here you can alter the text rotation of in 1° steps.

- **Stamp mode**

The standard setting for the type of stamp is "Opaque". There are three possible settings:

- **Opaque:** The stamp overwrites the area of the drawing beneath it.

- **Transparent:** In the "Transparent" setting the inserted stamp lies "beneath" the existing drawing, which means that parts of the stamp can be overwritten.
- **Inverting:** It is only the "Inverting" setting that allows both the drawing as well as the stamp to be identified in the plot, because the overlapping areas are shown inverted.

- **Stamp placement**

This is where you determine the actual position of the stamp on the drawing. The frame equates to the drawing, so that you can choose from the entries for the nine positions from "top", "centered" to "bottom".

In addition, you can shift this fixed position in the field to the right of it by a valid size unit (x-, y-axis).

- **Scale position**

With the "Scale position" you determine whether the stamp always retains its position relative to the edge of the drawing when the size is changed or whether the distance to the edge of the drawing is to be enlarged or reduced.

- **Scale stamp**

Use "Scale stamp" to stipulate whether the stamp should also be scaled when there is a change in size, or whether it should stay the same size.

- **Enable frame**

Activate the "Enable frame" option if you want a stamp frame to be printed:

- **Upper setting - stamp border:** With the upper of the three settings you set the distance of the stamp to the edge of the drawing.
- **Middle setting - Stamp content:** The middle setting gives the distance between the stamp contents and the stamp frame.
- **Lower setting:** The lower setting is used to specify the thickness of the stamp frame.

## "Data" tab



**Note:** The use of stamp texts can be limited by your system's currently available resources. It may be possible that the stamp text cannot be printed if it has very long texts or very large characters. In this case, it is advisable to make the character size smaller or to reduce the length of the text. To a certain extent, it can help to add more RAM memory to the system or to enlarge your system's swapfile.

- **Stamp type**

Before you can begin to enter the settings or change the other fields, you must first select the stamp type, whereby the two symbols are clear: With the "A" you activate the "Text" field, with the colored symbol you let the program know that there is a logo and activate the "Logo orientation" field.

- **Text**

In this text field you can enter the text to be "printed" with your stamp. In the text field you can edit in the same way as in common word processing programs.

- **Font**

The "Font" button opens the usual Windows dialogue for the font attributes. Only the font color setting does not have any effect, because the color is fixed in RW-7140 PLOTCLIENT WIN with black.

- **Preview**

Use the "Preview" button if you want to view the stamp again before the final print. In this window you can move the directional arrows to move from side to side and enlarge or reduce the view using "+" and "-". The left-hand mouse button can be used to enlarge a selected area.

However, the preview only applies to the stamp itself and the arrangement of its logo and its text. The preview does not show you the stamp's position on your drawing, which you set on the "Settings" tab!

- **Macros**

You can use a macro to enter a text field, which is not filled out until printed. In the preview you can only see the field function. The following macros are available:

- Account: This macro inserts the text of the job editor field "Account" in the stamp.
- Count: This macro is suitable if you have lots of drawings or entries with the same stamp text and you want to differentiate between them by numbering them.
- Created with: This macro gives the name of the application which is used for creating a job (e.g. RW-7140 PLOTCLIENT WIN).
- Customer: This macro inserts the text of the job editor field "Customer" in the stamp.
- Date: With this macro, RW-7140 PLOTCLIENT WIN inserts the date of the plot. In the preview you can just see the current date because the plot date is not known.
- Distribution: This macro inserts the text of the job editor field "Distribution" in the stamp.
- File title: This macro gives the file name of the drawing how it is saved in the SSL directory of the server PC (e.g. house003.tif).
- Job name: This macro inserts the text of the job editor field "Job name" in the stamp.
- Notes: This macro inserts the text of the job editor field "Notes" in the stamp.
- Server name: This macro inserts the name of the server PC.
- Time: This macro inserts the time the drawing was stamped.
- User name: This macro inserts the text of the job editor field "User name" in the stamp.

- **Stamp gradation**

This option is only available, if you select stamp type "Opaque" or "Transparent". There are four different intensities: Black, dark gray, gray and light gray. Default is black.

- **Logo**

Select a graphic using the "Browse" button, which is to appear in the stamp as a logo. For example, the firm logo. The file formats that can be used are: BMP, CALS, CGM (optional), CIT,

EPI (optional), EPS (optional), HPGL, HPGL/2, HPGL-RTL (s/w), PCX, PDF (optional), PS (optional), TG4, T6X, TIFF G4. You can select from four possible positions for the logo relative to the text: above, below, right or left of the text. Select a position by clicking on it.



## Compile and plot jobs

Your main task with RW-7140 PLOTCLIENT WIN is to compile [plot-] jobs for RW-7140 PLOTBASE. You are free to choose whether you compile a job with one entry or with several entries. You can prepare fully new jobs or open existing jobs and add further entries.

### Compile new job

1. Open a new job, either via the menu item "File - Create new job" or by clicking once on the relevant button:



2. Assign a name to your new job.



**Attention:** The extension "\*.ssl" must be retained, so as to guarantee that RW-7140 PLOTBASE can recognize the job.

3. Now you add new entries to the job. You have three possible options for adding an entry. Refer to the following section "Add entries".
4. As soon as you have included all the entries in the job, you begin to enter the settings, which RW-7140 PLOTBASE needs to be able to print off the job as required. Please refer to the chapter "Job editing".
5. Finally, send the job to RW-7140 PLOTBASE by either selecting the menu item "File - Plot job" or by clicking on the relevant button:





**Note:** If the "machine authentication" has been activated at your RW-7140 plotter, you have to enter either a "User name" with "Password" or a "User code" to print jobs in the authentication mode. If you do not know your authentication data yet, please ask your administrator who is responsible for the user management.

## Edit existing job

1. Open the existing print job either via the menu item "File - Open existing job" or by clicking once on the appropriate button:



Alternatively, it is easy to shift the existing job into the entry list via the Drag & Drop function in Windows Explorer.

2. Now insert new entries into the job or delete entries that are not to be printed. You have three options if you wish to add an entry. For more information please read the chapter "Add entries" below. Deleting is explained in the chapter "Delete entries" found below.
3. As soon as you have included all the entries in the job, you begin to enter the settings, which RW-7140 PLOTBASE needs to be able to print off the job as required. Please refer to the chapter "Job editing".
4. Finally, send the job to RW-7140 PLOTBASE by either selecting the menu item "File - Print job" or by clicking on the relevant button:





**Note:** If the "machine authentication" has been activated at your RW-7140 plotter, you have to enter either a "User name" with "Password" or a "User code" to print jobs in the authentication mode. If you do not know your authentication data yet, please ask your administrator who is responsible for the user management.

## Add entries

Newly inserted entries can have the following file formats, which are identified by RW-7140 PLOTCLIENT WIN from the file extension:

- Calcomp ..... (\*.906, \*.907)
- CALS [to MIL-STD-1840B] ..... (\*.cal)
- CALS [to MIL-STD-28002A] ..... (\*.cal)
- Intergraph ..... (\*.cit; \*.tg4)
- HP-GL [/2, RTL]..... (\*.plt; \*.rtl)
- PCX..... (\*.pcx)
- T6X ..... (\*.t6x)
- TIFF ..... (\*.tif)  
[Group 3,4; uncompressed; packbits; striped & tiled]
- Windows / OS2 Bitmaps ..... (\*.bmp)
- Windows Meta File ..... (\*.wmf)

The following are available as an option:

- CGM..... (\*.cgm)
- PDF..... (\*.pdf)
- Postscript [RW-7140PS] ..... (\*.ps, \*.eps)
- VIC ..... (\*.vic)



**Note:** To get a preview of Postscript files you have to install the "PS/PDF Option" on the PLOTBASE server PC!

You can only use the following formats if you have installed a full version from AutoCAD series 2000 to 2009 or the "DWG/DXF/DWF option" on the server:

- DWF..... (\*.dwf)
- DWG ..... (\*.dwg)
- DXF..... (\*.dxf)



**Note:** RW-7140 PLOTBASE cannot print DWG and

DXF files, that contain several single files.

### **Add with button or menu item**

Proceed as follows if you wish to add an entry with a button or via a menu item:

1. Mark an entry in the entry list, before or after the place where the new entry is to be inserted.  
If you do not mark any entry, new entries are always inserted at the end of the list.
2. If the new entry is to be inserted after the marked entry choose the menu item "Edit - Insert entry" or click on the relevant button on the entry toolbar:



If the new entry is to be inserted at the end of the entry list, choose menu item "Edit - Add entry" or click on:



3. The program opens a file selection window. Select the required file, which has one of the required file formats and confirm with "OK". You can also mark several files to insert lots of drawings in one go, as known from the Windows Explorer.

### **Add using the right-hand mouse button**

To add an entry using the right-hand mouse button, proceed as follows:

1. Mark an entry in the entry list before or after which the new entry is to be inserted.  
If you do not mark any entry, new entries are always inserted at the end of the list.
2. Keep the mouse cursor on the entry list and click the right-hand mouse button.
3. If the new entry is to be inserted after of the marked entry,

select "Insert entry". If the new entry is to be inserted at the end of the list, choose "Add entry".

3. The program opens a file selection window. Select the required file, which has one of the above file formats and confirm with "OK". As in Windows Explorer, you can also mark several files to insert lots of drawings in one go.

## **Add with Drag & Drop**

To add an entry using Drag & Drop, proceed as follows:

1. Open Windows Explorer and arrange the two windows of RW-7140 PLOTCLIENT WIN and Explorer so that they are positioned next to each other or on top of each other.
2. Mark an entry in the entry list of RW-7140 PLOTCLIENT WIN, after which the new entry is to be inserted.

If you do not mark any entry, new entries will always be inserted at the end of the list.

3. Change to the folder in Explorer from which you want to fetch the new entry.
4. Click on the required file with the left-hand mouse button and holding the mouse button pressed down, drag the file to the file list of RW-7140 PLOTCLIENT WIN. You can also add several drawings in one go as in Explorer by marking several files.

## **Add multiple entries**

Sometimes, a customer job order is such that an entry has to be printed several times with different settings: e.g. if an entry is to be plotted once with A0 format on paper and the second time with A1 format on a translucence. To do this, you can also add an entry several times.

However, the program only physically inserts an entry once and if you add an entry several times, it simply sets a reference to the first entry.

Example: You insert the file "ABC.tif". This file is to be printed in format A0. For the second print out in format A1, insert the file "ABC.tif" a second time. At this moment, RW-7140 PLOTCLIENT WIN recognizes that there is already a file with the same name

in the entry list and only sets a reference to the already inserted file.

This approach of the program has two particular advantages for you. On the one hand it saves space on your harddrive, is the files are very large and on the other hand, you cannot inadvertently insert a file with the same name but different content.

## Delete entries

If you want to delete an entry from the list, use one of the three following methods:

- Mark the entry in the entry list that you want to delete and select the menu item "Edit - Delete entry".
- Mark the entry to be deleted and click on the following button once:



- Mark the entry to be deleted, click on the right-hand mouse button and choose "Delete entry" using the left-hand mouse button.

To delete several entries you can also use the multiple selection of entries. When selecting several entries in the entry list to delete, proceed exactly as before, as you are used to from Windows Explorer.

---

## **Part II - RW-7140 WINPRINT**



## Introduction

The Windows printer driver RW-7140 WINPRINT allows print jobs to be recorded from Windows applications, to then pass them directly to RW-7140 PLOTBASE as a plot job.

So you use your printer driver RW-7140 WINPRINT as any other printer via the Windows application menus "File - Print".

The RW-7140 WINPRINT is usually installed on the server PC where the server program RW-7140 PLOTBASE is running. In this case you only need to set up the printer driver on your client computer as network printer.

## Modify print parameters and print

This section describes the settings of the print parameters on client PCs with following operating systems:

- Windows 2000 Professional
- Microsoft Windows XP Professional
- Windows Vista
- Windows 2003 Server
- Windows 2008 server

As soon as you have installed RW-7140 WINPRINT as a "network printer" on your client PC, you can send print jobs from a Windows program to RW-7140 PLOTBASE.

First you must determine several settings for the print out. In the "Print" menu of your Windows application first select the RW-7140 WINPRINT from the list field and then click on the "Properties" and "Advanced" buttons:

### **Paper/Output**

- **Paper size [Manage]**

Press the button "Manage" to go to the dialogue for individual management of the formats. On the left you will see all available formats, and on the right the buttons for your individual settings. On the right you can use the button "New" to adjust up to eight individual formats including name and allocation of the units of measurement.

You can remove your own individual formats from the format list again by pressing the button "Delete". You can only delete your individual formats but not the standard default formats.

The eight buttons under "Select/Deselect" can be used to adjust additional features, for example whether you want to see "All ISO" formats or "No ISO" formats. The advantage of this is that it makes the list of formats under "Paper size" more manageable so that you can select the required formats more quickly.

- **Copy count**

If you wish to print out several copies of your job, enter the required number here.

## **Graphic**

- **Print quality**

Depending on the significance of the printout, here you can select three possibilities for the quality of your printout: draft, standard, and high.

## **Document options**

- **Output device [Manage]**

This list contains the output devices on which your print job can be printed out by RW-7140 PLOTBASE from the Windows application. Only the printers listed here can be selected in the Windows application. You can specify the selectable output devices by means of the "Manage" button.

- **Media source**

You can select one of the plotter rolls offered. In addition, you can also choose the "auto" or "bypass tray" options. The "auto" option means that the plotter itself selects a suitable roll, which corresponds to the given format. The "bypass tray" option means that you feed the print medium in the input tray yourself.



**Note:** If you choose the "bypass" option, please note, that some plotters might ask for a minimum size concerning the format.

- **Output**

Here you can select output at "front" and "rear".

- **Media type**

In the lower part of the window select what type of medium is to be used for the print: Plain paper, Translucent, Film or Recycled paper.

- **Raster resolution**

Define the resolution of the output device for printing the image. "High" means 100%, "Medium" 50% and "Draft" 25% of the value of the output device. If the output device prints with 600 DPI and your printout should be printed with only 300 DPI, adjust "Medium" here, etc.

## **Job processing**

- **Document server**

The "Document Server" is a memory unit in the plotter where RW-7140 WINPRINT can send one or several documents for later printout:

**File name:** Give an unequivocal file name to the job being sent to the document server.

**User name:** Also give the job a user name. This additional information is particularly useful if several users send jobs to the document server.

**Password:** If you only want your job to be printed on the plotter by you, you can protect it with a password. As soon as the plotter selects the print command for the corresponding job, the plotter will demand the password stated here.

- **Combine**

"Combine" refers to grouping together drawings for joint print-out on one single sheet.

**Quantity:** Adjust how many pages you want to print on the sheet. There is a choice of 2, 4, 8 or 16 pages.

**Target Paper Size:** Enter the size of the sheet of paper where the individual pages are to be printed together. Custom paper sizes are not supported for the feature "Combine"!

**Direction:** Finally, indicate the order for printing the individual pages on the sheet. The "Z" direction prints the pages line by line arranged from left to right until the line is full, before beginning with the next line. The "I" direction arranges the pages in columns from top to bottom until the column is full, before beginning with the next column.

- **Sample print**

Activate this option, if you wish to test the quality of a print. Only the first set of copies is printed. The print out of further sets of copies is stopped so that you can check the quality of the print. You are then asked, whether you wish to continue or abort the plot.

- **Delete after plot**

If you activate this option, the job is deleted after printing.

- **Locked print**

By activating "Properties", a dialog is displayed in which the user

is requested to enter a password twice. After this, the print out can only be started at the server RW-7140 PLOTBASE, if the correct password has been entered. For the password, more than 32 characters can be accepted, however, it is recommended to use 4 to 32 characters!

- **Authentication**

By activating "Properties", a dialog is displayed in which you are requested to enter your authentication data. If the "machine authentication" has been activated at your RW-7140 plotter, you have to enter either a "User name" with "Password" or a "User code" to print jobs in the authentication mode. If you do not know your authentication data yet, please ask your administrator who is responsible for the user management.



**Note:** "Software authentication" is not available for RW-7140 WINPRINT.

- **Page order**

Here you can specify the order in which the printed jobs are to appear in the output stack.

But the sequence of printouts in the output stack depends not only on the printing sequence but also on the output the plotter is using. Some plotters have two outfeeds. The plotter may internally again rotate the printouts for the front or the rear outfeed. You should therefore check how the documents emerge from these two outfeeds as standard:

**Auto:** On this setting, the drawings are held in the outfeed in the sequence specified in the job editing (1,2,3,4,... or ...,4,3,2,1). This is irrespective of whether you have selected the "front" or the "rear" outfeed.

**Reverse:** The set entries are printed out in reverse order (...4,3,2,1). The order of the sheets in the resulting stack depends on the selected output tray. If the "rear" tray is selected, the order of the sheets in the stack is the same as in the job editing (...4,3,2,1). If the "front" tray is selected, the order of the sheets in the stack is reversed again (1,2,3,4...). The result depends on the plotter model.

**Standard:** The set entries are printed out in the order they are shown in the job editing (1,2,3,4...). The order of the sheets in the resulting stack depends on the selected output tray. If the "front" tray is selected, the order of the sheets in the stack is the same as in the job editing (1,2,3,4...). If the "rear" tray is selected, the order of the sheets in the stack is reversed (...4,3,2,1). The result depends on the plotter model.

### **Job information**

- **Account**

The account number of the customer is entered here. This can be an account number that is allocated in-house or an in-house invoice recipients. This field can have a default allocated by RW-7140 PLOTBASE!

- **Cost center**

Here you can enter a cost center information. This field can have a default allocated by RW-7140 PLOTBASE!

- **Project**

Here you can enter a project to which the plot job belongs. This field can have a default allocated by RW-7140 PLOTBASE!

### **Finishing options**



**Note:** The possible finishing options depend on what folder you have connected to your RW-7140 system.

- **Fold program**

If a folder is connected, the device's various fold programs will be selectable here.

- **Title block**

As many folders expect the title block to appear at different positions on the drawing, this feature allows you to adjust the title block on the folder so that, after folding, it is uppermost.

- **Output**

Here you can select the output tray for the folded print out: auto, front, rear.

- **Punch**

Specify here if the print out is to be punched.

- **Cross fold**

Specify here if the print out is to be cross folded.

- **Hanging strip**

Specify here if the print out is provided with a hanging strip.

- **Reinforce**

Specify here if the print out is to be reinforced.

- **Favor back**

Specify here if the print out is provided with a favor back.

- **C-fold**

Specify here if the print out is to be c-folded.

- **Landscape**

With this setting, you tell the folder if the print out was printed in landscape format.

- **Color adjustment for raster images**

This is a setup option provided by Windows. You can obtain further information on this from the Windows Help.

---

## **Part III - RW-7140 PLOTCLIENT HDI**



## Introduction

RW-7140 PLOTCLIENT HDI produces HPGL/2-files from the drawings and documents, which have been produced in the AutoCAD programs AutoCAD R13 and R14, AutoCAD 2000, 2000i, 2000 LT, 2000 Lti as well as AutoCAD 2002 LT - AutoCAD 2009 LT and AutoCAD 2002 - AutoCAD 2009. The print jobs can be sent to the RW-7140 PLOTCLIENT WIN program or directly to the RW-7140 PLOTBASE server program. Further settings can be made there, before the print jobs are sent to the plotter.

## Modify print parameters and print

As soon as you want to print in your AutoCAD program a file via "File - Print" menu, the presets for the print job open. Here you enter on which medium and format you want to print or even, whether the file is to be printed rotated and mirrored. You can alter the settings for the print job on the following tabs:

- Main
- Advanced
- Options
- Job data
- About

### "Main" tab

- **Border**

If you want a white margin around the drawing plot, enter the required spacing for all side borders. You can choose between the size units mm and inches.

- **Copies**

You can enter any number of copies between 1 and 999 to be printed by the job.

- **Cut mode**

If you select "Synchro", the plotter will cut off the image immediately after the last data. The use of paper or rather the medium is thus optimized because only a minimum of waste cuttings is created.

If, on the other hand, you always wish the printout to be cut in a standard format, regardless of how much space remains unprinted, then select "Format". The plotter will thereby receive the command to cut according to the next largest format.

- **Fold program**

If a folder is connected, the device's various fold programs will be selectable here .

- **Size**

In this section of the tab you select the drawing format, in which the drawing is to be printed. Apart from the "Original" you will

also find the drawing formats: ISO A/B/C, ANSI A-E and ARC A-E.

In the format setting "Original" the program obtains the format size from the original file of the drawing. This is the presetting. If you want to scale the drawing use scaling option in AutoCAD. AutoCAD supports definition of custom defined paper formats. If you use the "Window" format setting, you can freely adjust the format width and height values.

- **Invert**

If you activate this option, the drawing is inverted, i.e. black and white colors are swapped.

- **Media source**

You can select one of the plotter rolls offered. In addition, you can also choose the "automatic" or "bypass tray" options. The "automatic" option means that the plotter itself selects a suitable roll, which corresponds to the given format. The "bypass tray" option means that you feed the print medium in the input tray yourself.

- **Media type**

Use this menu to select which type of media the drawing is to be printed on: Plain Paper, Translucent, Film. The selection depends on what roll of medium you have fed in the plotter.

- **Mirror**

In this area you can set whether the drawing is to be mirrored or not during plotting. You can choose from four options:

OFF: The drawing is not mirrored during plotting.

X: The drawing is mirrored horizontally.

Y: The drawing is mirrored vertically.

XY: The drawing is mirrored about both axes  
simultaneously; equates to a 180° rotation.

You usually use these settings if the drawing has been scanned and saved with a mirror inversion. This is especially important if a transluence has been scanned with mirror inversion to increase the contrast.

- **Output tray**

Depending on the connected plotter, here you can select output at the "top, bottom" or "front, rear, rear hold".

- **Output device**

RW-7140 PLOTCLIENT HDI offers the possibility to print on different output devices. Select the plotter, where your print job should be printed.

- **Rotate**

Here you can set whether the drawing is to be rotated or not during plotting. Rotations of 0°, 90°, 180° and 270° are possible. When set to "Auto", RW-7140 PLOTCLIENT HDI rotates automatically if this results in less waste paper.

- **Start printer monitor**

Using the printer monitor, you can call up the device information, which will show you the characteristics of the output device connected. You can select the required device on the "Device list" tab and then view the associated device information, such as the rolls currently fitted or the current level of toner, on the "Properties" tab.

- **Units**

Set the size units to "mm" or "inches", which apply for all settings.

- **Update plotter data**

By clicking the "Update plotter data" command, you can call up the properties of the actively connected output device once more, in order to be able to see the current state of the device in the "Printer monitor", such as the rolls fitted or the level of toner. This command has the same effect as the "Update" command in the "Printer monitor".

## "Advanced" tab

- **Delete after plot**

Activate this option, if the job is to be deleted immediately following successful print out.

- **E-mail**

Enter the email address to which the RW-7140 PLOTCLIENT HDI should automatically send a message following successful completion of the plot job.

- **Job information - Account**

The account number of the customer is entered here. This can be an account number that is allocated in-house or an in-house invoice recipients. This field can have a default allocated by RW-7140 PLOTBASE!

- **Job information - Contact**

A contact option for a print job can be made in this field if, for example, queries should arise during printing. This field can have a default allocated by RW-7140 PLOTBASE!

- **Job information - Cost center**

Here you can enter a cost center information. This field can have a default allocated by RW-7140 PLOTBASE!

- **Job information - Customer**

This is the name of the customer for whom the plot job is being carried out. You can enter a maximum of 40 characters. This field can have a default allocated by RW-7140 PLOTBASE!

- **Job information - Distribution**

In this field you can enter who is to receive a copy of the job. You can enter a maximum of 60 characters. This field can have a default allocated by RW-7140 PLOTBASE!

- **Job information - Notes**

This field is free for you to make comments. You can enter a maximum of 60 characters. This field can have a default allocated by RW-7140 PLOTBASE!

- **Job information - Project**

Here you can enter a project to which the plot job belongs. This field can have a default allocated by RW-7140 PLOTBASE!

- **Locked print**

By activating the property, a dialog is displayed in which the user is requested to enter a password twice. After this, the print out can only be started at the server RW-7140 PLOTBASE, if the correct password has been entered. For the password, more than 32 characters can be accepted, however, it is recommended to use 4 to 32 characters!

- **Priority**

Set the priority of the print job. If several print jobs are in the queue, the job with the highest priority is plotted first.

- **Sample print**

Activate this option, if you wish to test the quality of a print. Only the first set of copies is printed. The print out of further sets of copies is stopped so that you can check the quality of the print. You are then asked, whether you wish to continue or abort the plot.

- **Stamp**

Here you can adjust whether a stamp should be printed or not.

- **Stamp - Font size**

Set the font size for the stamp text. You can set the value between 10 pt to 48 pt.

- **Stamp - Position**

With this option you can fix the position of the stamp text on the drawing. You can choose between nine positions.

- **Stamp - Rotate**

If you wish the stamp to be rotated on printing, enter the angle of rotation.

- **Stamp - Text**

Enter the brief text to be printed on the drawing as a stamp.

- **User name**

The basic settings are loaded and saved under this name. If the name used for the current plotter type is not yet available on the INI file, the current settings in the windows are set as the basic settings for this user. If the user name already exists, the current settings are overwritten by the saved basic settings for this user

from the INI-file.



**Note:** When the "software authentication" is activated in RW-7140 PLOTBASE, the field "User name" is deactivated here; RW-7140 PLOTBASE automatically takes the user name for this field from the user logged on to the operating system. If this user name does not correspond to one of the users set up in the user group "PLOTBASE Users" on the server PC, the print job is not carried out. In this case, ask your administrator responsible for user management and for whom corresponding authentication instructions are available in the RW-7140 PLOTBASE manual.

## **"Options" tab**

- **Language**

Here, you can change the language for the program interface simply by activating the appropriately inscribed button. The first time you start the program, RW-7140 PLOTCLIENT HDI will start in the language of the country, which you selected when installing the program. If the program is always to be displayed in the language of the country, which is set as the default for the Windows operating system on which RW-7140 PLOTCLIENT HDI is running, choose the "System" option with the PC icon. After making the change, restart RW-7140 PLOTCLIENT HDI.

- **Restore default settings**

The settings saved for the current user name and plotter type are loaded from the INI-file and the dialogs are updated.

- **Save these settings as default**

The current settings are saved for the current user name and plotter type by pressing this button.

The user-defined settings in RW-7140 PLOTCLIENT HDI are saved using the button "Save these settings as default" on the "Options" tab.

After every program start, the settings of the user currently

logged on to the operating system are loaded. If you want to change to the settings of another user, log on to the system as this user or load his settings by entering the required user under "User name" on the card "Advanced" and then change to another field with the mouse or tab button.

- **Select program mode**

RW-7140 PLOTCLIENT HDI can be used in different modes:

- Display this dialog: When starting RW-7140 PLOTCLIENT HDI, this dialog is always displayed for editing the job settings.
- Do not display this dialog: When starting RW-7140 PLOTCLIENT HDI, no dialog is displayed and the print job is printed with the settings from the user's basic settings for the current plotter type.
- Generate set with RW-7140 PLOTCLIENT WIN: When starting RW-7140 PLOTCLIENT HDI, RW-7140 PLOTCLIENT WIN is started and the plot file is transferred to this program. The RW-7140 PLOTCLIENT WIN can then be used with SSL commands to produce a complete job set made up of the individual print files.

- **Server name**

By default, the name of the server, which you specified at the start of the installation, appears here. You can also change the server by means of the "Browse" button.

- **Spool directory**

A dialog is opened with the "Add" button, in which the user can search for the spool folder on their computer or in the network.

## **"Job data" tab**

- **Document server**

If the corresponding job is not to be printed directly but sent to the plotter's document server, activate the function with "on". Your job can contain several drawings and depends on how much memory is available in your plotter's document server. Consult your plotter manual for details if necessary:

**File name:** Give an unequivocal file name to the job being sent to the document server.



**User name:** This additional information is particularly useful if several users send jobs to the document server.

**Password:** If you only want your job to be printed on the plotter by you, you can protect it with a password. As soon as the plotter selects the print command for the corresponding job, the plotter will demand the password stated here.

- **Machine authentication**

If the "machine authentication" has been activated at your RW-7140 plotter, you have to enter either a "User name" with "Password" or a "User code" to print jobs in the authentication mode. If you do not know your authentication data yet, please ask your administrator who is responsible for the user management.

## **"About" tab**

Here you can get information about program version and start the online help via "Help" button.

---

## **Part IV - RW-7140 PLOTCLIENT WEB**

## Introduction

RW-7140 PLOTCLIENT WEB is a program for creating plot jobs. It enables you to collect job-based jobs at any computer within a network and to send them to RW-7140 PLOTBASE either via the intranet or via the internet, with the possibility of stipulating numerous print parameters.

RW-7140 PLOTCLIENT WEB is capable of automatically processing whole sets of documents or drawings.

Please consider following notes for your work with RW-7140 PLOTCLIENT WEB:

Because of the HTML technology the actual layout of the client's content may vary among different browsers or versions of browsers!

Some functions [e.g. automatic password completion] may work differently among different browsers or version of browsers or system settings of the browsers. This includes that the functions may not be available.

The multifile upload requires a flash plugin. Please refer to the manufacturer of the flash plugin [e.g. [www.adobe.com](http://www.adobe.com)] to check whether your preferred browser and operating system are supported. Otherwise you cannot use the multifile upload in RW-7140 PLOTCLIENT WEB.

## Start program

Make sure that you have activated Java Script on the client PC before starting the RW-7140 PLOTCLIENT WEB in the browser like this:

- **On the server PC**

Use the start menu: "Start - Programs - RW-7140 - RW-7140 - RW-7140 PLOTCLIENT WEB".

Or use the desktop icon "RW-7140 PLOTCLIENT WEB".

- **On another PC in the network**

After installing RW-7140 PLOTBASE, the "Tools" directory "\\[PLOTBASE server]\tools\RW-7140 PLOTCLIENT WEB" offers a link to the PLOTCLIENT WEB. Alternatively, you can also go to PLOTCLIENT WEB by entering the following address in your browser:

[http://\[PLOTBASE server\]/PCW](http://[PLOTBASE server]/PCW)

The log in procedure asks you to enter a user name and a password. During installation, a user was created with administrator rights. Immediately after installation, the access data for this user are:

- User name: **admin**
- Password: **admin**

There is also a default user with limited use rights. The access data for this user are:

- User name: **demo**
- Password: **demo**

After starting the program for the first time, first of all you should change the administrator password.

To finish your RW-7140 PLOTCLIENT WEB session, please log off with the "Logout" button at the top of the program window.

If you do not make any adjustments or click on anything for 20 minutes, you will be automatically logged off from RW-7140 PLOTCLIENT WEB.

## Administration

The program is configured by an administrator on the "Administration" tab. The administrator can access the "Administration" tab from any computer in the network. The following settings can be changed on this tab:

- Plot settings
- Manage users
- Global settings
- Internationalization

## Plot settings

### Spool path setting

Users send sets to the spool directory of RW-7140 PLOTBASE. RW-7140 PLOTBASE accesses this spool directory at certain time intervals, forwards the files existing there to the plotter for printing and deletes them afterwards from the spool directory.

The spool directory is found automatically and called:

\\[PLOTBASE server]\Spool\SSL

If you want to use another "spool directory" rather than the one stated in RW-7140 PLOTBASE, please proceed as follows:

1. On the "Administration" tab, select "Plot settings" in the selection list.
2. Click on the "Add spool path" button.
3. Enter the PC (host name or IP address) on which RW-7140 PLOTBASE is installed in the input box "Plotbase server".
4. Enter the complete UNC path of the spool path (e.g. \\[PLOTBASE server]\spool\ssl) in the field "UNC-Spool-path".
5. Click on "Save".



**Attention:** Ensure that RW-7140 PLOTCLIENT WEB has writing rights in the "Spool release" of RW-7140 PLOTBASE. Contact your network administrator if there

are any problems.

## E-mail settings

The e-mail notification informs the users whether RW-7140 PLOTBASE has received their sets. Configure this function for e-mail dispatch and modify the e-mail notification if necessary.

Proceed as follows to configure e-mail dispatch:

1. On the "Administration" tab, select "Plot settings" in the selection list.
2. Enter the SMTP server (mail server address) and the SMTP port (standard setting port 25).
3. Enter the SMTP user name and the SMTP password if your mail server needs these entries.
4. Click on "Save".

## Manage users

The preset users are "admin" and "demo". The "admin" user has all rights and cannot be deleted.

Proceed as follows to create a new user:

1. On the "Administration" tab, select "Manage users" in the selection list.
2. Enter the following data for the user account:



**Note:** If the "software authentication" is activated in RW-7140 PLOTBASE, make sure that the user entered in the "User name" field corresponds to a user set up in the "PLOTBASE Users" user group on the server PC. If this user belongs to a domain, also ensure that the correct domain is stated in the "Domain" field! If this user name does not correspond to one of the users set up in the user group "PLOTBASE Users" on the server PC, the print job is not carried out. In this case, ask your administrator responsible for user management and for whom corresponding authentication instruc-

tions are available in the RW-7140 PLOTBASE manual.

**User name:** Enter the name with which the user logs into RW-7140 PLOTCLIENT WEB.

**Group:** Select the corresponding group for the user:

- **Administrator:** Has all administrative rights and can configure RW-7140 PLOTCLIENT WEB
- **Normal user:** Has only limited user rights.

**Password:** Enter the password with which the user logs into RW-7140 PLOTCLIENT WEB.

**E-mail:** Enter the e-mail address for e-mails in the " e-mail notification" function.

**Domain:** Enter the domain that the user belongs to.

**Job waiting:** If this option is activated, the user's jobs are given the "Waiting" status in the RW-7140 PLOTBASE queue. This option is beneficial particularly for users who send their print jobs via the internet. Here the administrator can check that the print data have arrived completely and without errors before starting the print process.

**Notify:** Click on the "Notify" button if necessary to activate the e-mail notification function. The user is then informed by e-mail when RW-7140 PLOTBASE has received his plot job successfully.

3. Finally click on "Add".

Proceed as follows to delete a user:

1. On the "Administration" tab, select "Manage users" in the selection list.
2. Click on "Delete" after the user to be deleted.

## Global settings

You can use "Global settings" to process the e-mail settings for all users.

Proceed as follows to modify the e-mail notification:

1. On the "Administration" tab, select "Global settings" in the selection list.
2. If necessary, edit the input box for the e-mail header. The boxes <username>, <setname> and <date> are variables which you can use if necessary for automatic entries. This ensures that the user is addressed with his user name, the plot job is named with the job name and the current date is used.
3. Edit the input box for the e-mail footer if necessary.
4. Press "Save" to confirm your inputs.

The following address is automatically used as sender of the e-mail:

PLOTCLIENTWEB@plotbase.com

## Internationalization

Here you can adjust the units of measurement and output formats:

1. On the "Administration" tab, select "Internationalization" in the selection list.
2. Select "mm" or "inch" in the selection list.
3. Press "Save" to confirm your inputs.

In adjusting the "Output formats", you can select which format family is featured first in the corresponding selection lists in RW-7140 PLOTCLIENT WEB. Proceed as follows:

1. On the "Administration" tab, select "Internationalization" in the selection list.
2. Select "ISO", "ARC" or "ANSI".
3. Press "Save" to confirm your inputs.



## Compile and print jobs

In RW-7140 PLOTCLIENT WEB you can put print jobs together and stipulate various print parameters.

### File formats

The following file formats can be used in RW-7140 PLOTCLIENT WEB:

- CALS [nach MIL-STD-1840B] ..... (\*.cal)
- CALS [nach MIL-STD-28002A] ..... (\*.cal)
- HP-GL [/2, RTL] ..... (\*.plt, \*.rtl)
- Intergraph ..... (\*.cit)
- PCX ..... (\*.pcx)
- T6X ..... (\*.t6x)
- TIFF ..... (\*.tif)
- Windows / OS2 Bitmaps ..... (\*.bmp)

An additional license has to be acquired for the following optional file formats:

- PDF ..... (\*.pdf)
- Postscript [RW-7140PS] ..... (\*.ps, \*.eps)
- DWF ..... (\*.dwf)
- DWG ..... (\*.dwg)
- DXF ..... (\*.dxf)
- VIC ..... (\*.vic)

The following file formats can be processed but not displayed:

- Calcomp ..... (\*.906, \*.907)
- CGM ..... (\*.cgm)
- WMF ..... (\*.wmf)

## Workflow

This section explains firstly how to proceed when creating a plot job. The following sections provide detailed explanations about individual steps:

1. **Start program:** Start a browser program and open the start page of RW-7140 PLOTCLIENT WEB by entering the address in your browser.

`http://[PLOTBASE server]/PCW`

2. **Log in:** Log in with your user name and password. Access is only granted to users who have already been entered in the user configuration by the administrator. Please ask your administrator which user name and which password he has allocated to you. Click on "Log in" to confirm the details.
3. **Create job:** First of all, create a new job.
4. **Select files:** Upload the drawings and documents to be printed onto the server or select them from a collection of already uploaded files.
5. **Adjust job settings:** Now select the print parameters which are to apply jointly to all the drawings and documents in a job for printing.
6. **Adjust entry settings:** Then select the print parameters which apply only to individual entries.
7. **Send job for printing:** Now send the plot job to RW-7140 PLOTBASE.
8. **E-mail notification:** If the corresponding setting is activated in your user account, you will be informed automatically by e-mail that RW-7140 PLOTBASE has successfully received your plot job.

## Create and delete jobs

### Create jobs

A job consists of all drawings and documents which are sent under a job name together with the print settings to RW-7140 PLOTBASE and later printed out by the plotter in one print cycle. The individual drawings and documents of the job are called "entries".

The job name is allocated automatically. It consists of the time (date and time) at which the job was created, the user name and the number of entries contained in the set, e.g.:

"2009-02-10 12.08.37 User name"

After logging in, the start page shows all the sets already created by the logged in user. To go to this page while using the program, click on the RW-7140 PLOTCLIENT WEB logo in the top left corner of the program.

Now create a new job by clicking on the "New job" button: this is at the top on the left, over the display of the job view.

### Delete jobs

Proceed as follows to delete a job:

1. In the "Job view", click on the job that you want to delete.
2. Click on the "Delete job" button to the right of the corresponding job.
3. Press "Delete" to confirm that you want to delete the job.

### Job status

The job view is displayed on the left side of the screen while the program is in use. The color of the "Folder symbol" before the job name indicates the editing status:

- **Blue:** The job has just been created or has been already printed and then changed again.
- **Yellow:** The job has already been sent to RW-7140 PLOTBASE, but has not been printed yet.

- **Green:** The job has been sent to RW-7140 PLOTBASE and has already been printed.
- **Red:** An error has occurred in RW-7140 PLOTBASE and the job could not be printed.

Click on the "Refresh joblist status" button to update the display of the editing status.

## Compile jobs

The "File upload" function can be used to upload various files for printing in a "File pool" onto the RW-7140 PLOTCLIENT WEB server.

These files are saved in the "File pool" on the server under the name of the logged in user. These are available for creating new sets as soon as the user logs in to RW-7140 PLOTCLIENT WEB.

The files are listed in the "File pool" with the latest document in the top position. If files with the same name are uploaded repeatedly in the "File pool", the file names are incremented.

Proceed as follows to select a file for a job and upload it to the RW-7140 PLOTCLIENT WEB server:

1. Click on the "New entry" button at the end of the job for which you want to create a new entry.
2. You can now see the "File upload" section. Select a file using the "Browse" button.
3. Proceed in the same way to select more files if necessary.
4. Click on the "Upload" button to upload the selected files to the RW-7140 PLOTCLIENT WEB server. The files are now added to the job as new entries and also saved in the "file pool".

Proceed as follows to select a file for a job when the file is already in the "file pool":

1. Click on the "New entry" button at the end of the job for which you want to create a new entry.
2. Click on the "File pool" button.
3. Click on one or several files to select them.

4. Click on the "Create entries" button.

To delete files from the "file pool" at a later point in time, simply click on the "Delete" button after the corresponding file. Note that files can only be deleted from the "file pool" if they are not currently being used in a job.

## **Edit entry files**

You can replace the file for an entry. All settings made for the previous file are preserved for the new file. Proceed as follows:

1. In the job view, click on the job where you want to replace a file.
2. Click on the "Replace file" button next to the corresponding entry.
3. Select another file using "File upload" or from the "file pool".

## **Delete entry files**

Proceed as follows to delete an entry:

1. In the job view, click on the job where you want to delete an entry.
2. Click on the "Delete entry" button next to the entry you want to delete.

## **Quick view of entries**

You can have the entries shown in a screen-filling quick view. For multipage documents you can scroll through the individual pages in this quick view.

Proceed as follows:

1. Click on the mini view of the entry where you want to see a quick view.
2. To see the document in its original file format, click on the button "Open the original document in a new window".
3. For multipage documents, use the "Previous" and "Next" buttons to scroll through the document.

## Job settings

Click on a job to edit its job settings. Jobs have main settings and detail settings.



**Note:** The job settings apply for all new entries. In addition, you can also adjust a global setting which then applies to all entries currently in the job which are shown below. But as soon as you make individual changes to the settings for one of these individual entries, the affected field intentionally appears empty at the top in the job settings! And so a field which is empty at the top in the job settings shows you that the individual entries below do not all have the same setting!

## Main settings

You can edit the main settings after clicking on a job directly on the "Job" tab.

- **Account**

The customer's account number is entered in this box. This can be an account number issued internally or an internal invoice recipient.

- **Collate**

There is no point in activating this function unless you wish to generate one or more copies of a print job (see "Job copies"). Here you can specify how the entries for these print job copies are to be output. The following example explains how this is done:

Two copies of a print job are to be generated. The print job contains the entries A, B and C. If the function is activated ("On") the copies are printed out in the sequence A, B, C - A, B, C. If the function is deactivated (off), the copies will be printed out in the sequence: A, A - B, B - C, C.

- **Cost center**

If necessary, select a cost center for your print job from the list of

entered cost centers. Administrator rights are needed to enter a new cost center. Proceed as follows: Use the "Edit" button and click on "Add". Name the new cost center and click on "Save" to confirm your inputs.

- **Customer**

Enter the customer's name here.

- **Delete after plot**

If you activate this option, the job will be deleted after printed out.

- **Fold program**

If a folder is connected, here you can adjust whether your fold settings should be used. Click on "no fold" if folding is not required.

- **Job copies**

This box shows how many copies of a job are to be printed. If you want to print copies of a set, add the number of required copies here.

- **Job flag sheet**

The job flag sheet is printed out together with the job. It lists all job settings. You can also add further notes on the job in a text line. In order to activate the sheet and edit any text, click on "Details".

- **Locked print**

To protect a set, enter a password here and click on "Save". The print job locked in this way can only be printed on the RW-7140 PLOTBASE server PC if the correct password has been entered.

- **Media type**

This selection menu is used to select which type of media is to be used for printing the drawing. The selection depends on what material is in the plotter rollers.

- **Notes**

This box is free for your remarks.

- **Output device**

Here you select one of the plotters on the system.

- **Output tray**

Select one of the trays containing rolls with varying print materials (paper, foil, etc.). You have two possibilities for producing your printouts on the plotter: "upper" and "lower". In the default setting, the printout is produced at the front.

- **Sample print**

For a large print job with several job copies, it can be a good idea to do a trial print of every entry. You can then check the quality before printing the other job copies. To do so, activate the "Sample print" option.

- **Size**

Enter the required output size here. You can keep the original size, or select one of the specified formats. This includes the usual formats used as standards in Europe, Asia and in the USA.



## Detailed settings

To edit the detailed settings, click on the "Edit job" button.

- **Combine**

Combine means printing several print pages together on one single sheet. You can print up to 16 drawings on one sheet.

The two style types "I-direction" and "Z-direction" indicate how the individual drawings are to be arranged on the sheet. In the "Z-direction", the drawings are arranged on a line from left to right until the line is full, before starting the next line. In the "I-direction", the drawings are arranged in a column from top to bottom until the column is full, before starting the next column.

- **Distribution**

In this box you can enter which recipients are to receive a copy of the printout.

- **Document server**

The "Document server" is a memory unit in the plotter to which RW-7140 PLOTBASE can send one or several documents for printing later.

The documents are saved in the "Document Server" until printing the job is triggered directly at the plotter or until the job is deleted at the "Document server". Documents saved in the "Document Server" can no longer be sent for printing by RW-7140 PLOTBASE!

If a job is not printed directly but should be sent to the plotter's "Document server", press "On" to activate this function and adjust the following settings:

**User name:** Give the job an additional user name. This additional information is particularly useful when several users send jobs to the "Document server".

**Password:** If you want to ensure that no one else can print your job at the plotter, you can protect it with a password. As soon as the print command is selected on the plotter for the corresponding set, the plotter will demand the password entered here.

**File name:** Give a unique file name to the job being sent to the "Document server".

- **Media source**

Select one of the trays containing rollers with different materials (paper, transparency, polyester, etc.).

If you select the "auto" setting, the plotter selects the media source corresponding to the format size of the drawing. If this medium has been used up, the plotter uses the roller with the next largest format. The option "manual" can be used for printing with a special medium. This setting is valid, when "Combine" is activated.

- **Media type**

Select which type of medium should be used for printing the drawing. The selection depends on the rollers in the plotter. This setting is valid, when "Combine" is activated.

- **Page order**

Here you can select the order in which the printed entries should lie in the output stack.

**Auto:** In this setting, the printouts lie in the output tray in the order of the entry view, regardless of whether you select the "upper" or "lower" tray.

**Standard:** The entries are printed in the order of the entry view. The order in which the printouts finally lie in the output stack depends on the tray setting of your plotter. A second output tray possibly presents the printouts in the reverse order.

**Reverse:** The entries are printed in the reverse order of the entry view.

- **Paper size**

Enter the paper size for the sheet being used for printing. This setting is valid, when "Combine" is activated.

## Entry settings

Click on a job to edit its entry settings. There are main settings and detailed settings for entries.

## Main settings

You can edit the main settings after clicking on a job directly on the "Job" tab.

- **Copies**

This box shows how many copies of an entry are to be printed. If you want to print copies of an entry, add the number of required copies here.

- **Media type**

This selection menu is used to select which type of medium is to be used for printing the drawing. The selection depends on what material is in the plotter rollers.

- **Size**

Enter the required output size here. You can keep the original size, or select one of the specified formats. This include the usual formats used as standards in Europe, Asia and in the USA.

- **Fold program**

If a folder is connected, here you can adjust whether your folding settings should be used. Click on "off" if folding is not required.

- **Title block**

Many folders expect the title block in different positions, so you can use this function to align the title block on the folder so that it is at the top after folding. With this setting, you tell the print application in which position the folder expects the title block. The program then turns the drawing into the position necessary for the folder.



**Note:** The function "Titel block" is always activated even when the function "Folding program" is deactivated.

vated. Please therefore check to see whether the function "Folding program" is activated or not before adjusting the settings here.

## Detailed settings

To edit the detailed settings, click on the "Edit entry" button.

- **Border**

If you want a white border around the drawing when plotting, click on the "Details" button.

Enter the required spacing for all borders and click on "Save".

- **Cut mode**

In the "Synchro" setting, the plotter cuts the drawing off immediately after the last printed data to warrant optimum use of paper and medium. This generates the least waste.

In the "Format" setting, the printout is always cut off in a standard format, regardless of how much space remains unprinted.

- **Invert**

If you activate this option, the drawing is inverted, i.e. the black and white colors are swapped over.

- **Media position**

To print the image on a larger paper format, you can adjust the position of the printout on the paper here. For example, if you have an ISO A4 drawing to be printed in original size on ISO A1, here you can stipulate where the drawing is position on the larger sheet. In the "auto" setting, the printout is positioned at the top on the left.

- **Media source**

Select one of the trays containing rollers with different materials (paper, transparency, polyester, etc.).

If you select the "auto" setting, the plotter selects the media source corresponding to the format size of the drawing. if this medium has been used up, the plotter uses the roller with the next largest format. The option "manual" can be used for printing with a special medium.

- **Mirror**

In this area you can specify whether the drawing is to be mir-

rored or not during plotting:

OFF: The drawing is not mirrored during plotting.

X: The drawing is mirrored horizontally.

Y: The drawing is mirrored vertically.

XY: The drawing is mirrored about both axes  
simultaneously; equates to a 180° rotation.

You usually use these settings if the drawing has been scanned and saved with a mirror inversion. This is especially important if a vellum has been scanned with mirror inversion to increase the contrast.

### • **Pen settings - Calcomp**

**In case of scaling:** Activate the check box, if the pen widths are to be scaled with the drawing. To avoid possible loss of information during the printout, you must ensure that you have entered a minimum pen width..

**Pen limits - minimum:** The selected pen thickness must be large enough to reliably print single pixels.

**Pen limits - maximum:** Analog to the setting for minimum pen thickness, here you can stipulate the maximum thickness which a pen should draw.

**Synchronization:** Synchronization is used to check the completeness of the Calcomp files. Four pieces of information are used for the synchronization settings:

- Sync char
- End char
- Double Sync
- Check sum

You can either let RW-7140 PLOTCLIENT WEB determine the values or you can enter the necessary settings yourself. If the program is to determine the values, activate "Autodetection".

We recommend that you do not alter the standard values if you want to enter the settings yourself. Should you nevertheless want to make a change or to find out more on the topic, compare the settings with those in your CAD system or read the following section in the "Calcomp Inc." manual:

"Calcomp - Online Reference Manual" in the section "Data Message Format".

**Pen source - width:** If you activate "File", the pen size details are taken from the plot file being printed. However, if no set-

tings were provided here, the plotter uses the standard defaults specified in RW-7140 PLOTBASE. If you activate "Custom", the printout uses your settings from below.

- **Pen settings - DWF, DWG, DXF**

The pen settings for DWF, DWG, DXF formats are almost the same as the settings for the HPGL[2] format. For the possible settings, please therefore read the HPGL section.

- **Pen settings - HPGL**

**Size:** The information on the current image size is supplied by a command in the vector file, e.g. in HPGL from the "PS" command ["plot size"]. The application generating the file is responsible for ensuring that all vectors really correspond to the adjusted size and that the adjusted size is also as large as expected.

Most plotter languages differ from each other in many ways; this includes the paper size. As a result unwanted print results may be obtained.

If you activate the option "File", the drawing is printed exactly as it was produced in the original application.

If you activate the option "Auto", RW-7140 PLOTCLIENT WEB automatically stipulates the size of the area to be printed on the basis of the outermost pixels of the drawing data so that no white margin is generated.

**Pen limits - Minimum:** The selected pen thickness must be large enough to reliably print single pixels.

**Pen limits - Maximum:** Analog to the setting for minimum pen thickness, here you can stipulate the maximum thickness which a pen should draw.

**In case of scaling:** Activate the check box, if the pen widths are to be scaled with the drawing. To avoid possible loss of information during the printout, you must ensure that you have entered a minimum pen width.

**Pen source - width:** If you activate "File", the pen size details are taken from the plot file being printed. However, if no settings were provided here, the plotter uses the standard defaults specified in RW-7140 PLOTBASE. If you activate "Custom", the printout uses your settings from below.

**Pen source - color:** Same as "Pen source - Width" but applied to the pen colors.

- **Pen settings - VIC**

The pen settings for VIC format are almost the same as the settings for the HPGL[2] format. For the possible settings, please therefore read the HPGL section.

- **Rotate**

Here you can adjust whether the drawing is to be rotated during plotting or not. The drawing can be rotated through 0°, 90°, 180° and 270°. In the "Auto" setting, RW-7140 PLOTCLIENT WEB turns the drawing automatically if this results in less paper waste.

- **Stamp - Stamp**

Here you can adjust whether a stamp should be printed or not.

- **Stamp - Text**

Enter the brief text to be printed on the drawing as a stamp.

- **Stamp - Font size**

Set the font size for the stamp text. You can set the value between 10 pt to 72 pt.

- **Stamp - Stamp position**

With this option you can fix the position of the stamp text on the drawing. You can choose between nine positions.

- **Stamp - Stamp mode**

The standard setting for the type of stamp is "Opaque". There are three possible settings:

- Opaque: The stamp overwrites the area of the drawing beneath it.
- Transparent: In the "Transparent" setting the inserted stamp lies "beneath" the existing drawing, which means that parts of the stamp can be overwritten.
- Invert: It is only the "Invert" setting that allows both the drawing as well as the stamp to be identified in the plot, because the overlapping areas are shown inverted.

- **Stamp - Mirror**

In this area you can specify whether the drawing is to be mirrored or not during plotting:

Off: The drawing is not mirrored during plotting.

X: The drawing is mirrored horizontally.

- Y: The drawing is mirrored vertically.  
 XY: The drawing is mirrored about both axes  
 simultaneously; equates to a 180° rotation.

• **Stamp - Stamp macro**

You can use a macro to enter a text field, which is not filled out until printed. In the preview you can only see the field function. The following macros are available:

- Account: This macro inserts the text of the job editor field "Account" in the stamp.
- Count: This macro is suitable if you have lots of drawings or entries with the same stamp text and you want to differentiate between them by numbering them.
- Created with: This macro gives the name of the application which is used for creating a job (e.g. RW-7140 PLOTCLIENT WEB).
- Customer: This macro inserts the text of the job editor field "Customer" in the stamp.
- Date: With this macro, RW-7140 PLOTCLIENT WEB inserts the date of the plot. In the preview you can just see the current date because the plot date is not known.
- Distribution: This macro inserts the text of the job editor field "Distribution" in the stamp.
- File title: This macro gives the file name of the drawing how it is saved in the SSL directory of the server PC (e.g. house003.tif).
- Job name: This macro inserts the text of the job editor field "Job name" in the stamp.
- Notes: This macro inserts the text of the job editor field "Notes" in the stamp.
- Server name: This macro inserts the name of the server PC.
- Time: This macro inserts the time the drawing was stamped.
- User name: This macro inserts the text of the job editor field "User name" in the stamp.



## Print jobs

Proceed as follows to send a job to RW-7140 PLOTBASE for printing :

1. In the job view, click on the job you want to send.
2. Click on "Plot" in the job head.
3. If the "Notify" setting has been activated in your user account, you will automatically receive an e-mail telling you that RW-7140 PLOTBASE has successfully received the plot job.



**Note:** If the "machine authentication" has been activated at your RW-7140 plotter, you have to enter either a "User name" with "Password" or a "User code" to print jobs in the authentication mode. If you do not know your authentication data yet, please ask your administrator who is responsible for the user management.

## Device status

The "Device status" tab shows information about the plotter connected to RW-7140 PLOTBASE and about the medium available in this plotter.

### **Plotter information**

- **Status**

This shows whether the RW-7140 plotter is currently available in the network and in standby, or not, with the following statuses: "Online", "Online (door open)", "Busy", "Offline", "Printing", "Online", "Unknown error", "Service required", "Paper jam", "Door open", "Toner empty", "Waste container full" and "Warmup".

- **Maximum and minimum length and width**

This shows the maximum and minimum page ranges which can be printed as long as the machine is equipped with the corresponding medium.

### **Medium information**

This shows information about the medium available for printing in the plotter. It shows what type of medium this is, how wide it is and the level of medium in the machine. The "Type" information indicates whether the medium is on a roll or in a tray for single sheet feeder or whether it is to be fed by hand.

### **Update status information**

Click on "Refresh" to update the details of the device status and the information about the currently available medium.

### **Download PPD file**

Click on "Download PPD file" to save the PPD file on your desktop which you need for working with a Mac OS.

---

## **Part V - RW-7140 PLOTCLIENT MAC**

## Modify print parameters and print

Whenever you want to send a print job, e.g. from a graphics program, open the menu item "File - Print". Enter the print parameters to be sent with the plot. If you always want to use the same print parameters you can save them as presets or default values. Open the "General" drop down menu to reach the three menu items used to set the print parameters for the RW-7140 PLOTCLIENT MAC, running on MAC OS 9.x or 10.2 - 10.5:

- Main Options 1
- Main Options 2
- Job Options

### Main Options 1

Send a print job via the menu item "File - Print". Open "Main Options 1" via the drop down menu "General". There you can alter the following settings:

- **Scale to format**

Select the drawing format for the plot. Apart from the "Original" option, you can choose from the following formats: ISO A/B/C, ANSI A-E and ARC A-E.

If you select the "Original" format setting, the program fetches the format size from the original drawing file. This is the preset.

- **Rotate**

Set whether the drawing is to be rotated or not when plotted. Rotations about 0°, 90°, 180° and 270° are possible. If you select the setting "automatically", RW-7140 PLOTBASE automatically rotates the drawing if this results in less paper wastage.

- **Mirror**

Enter whether the drawing is to be mirrored or not when plotted. The individual fields mean the following:

Off: The drawing is not mirrored when plotted.

X: The drawing is mirrored horizontally.

Y: The drawing is mirrored vertically.

XY: The drawing is mirrored about both axes simultaneously; equates to a 180° rotation.

You usually use these settings if the drawing has been scanned

and saved with mirror inversion. This is especially important if a translucence has been scanned with mirror inversion to increase the contrast.

- **Invert**

If you activate this option with "On", the drawing is inverted, i.e. black and white colors are swapped or inverted.

- **Cut mode**

If you select "Synchro", the RW-7140 plotter cuts the drawing immediately after the last set of data. This results in optimum paper or medium usage, because it produces the least waste.

If, on the other hand, you want the print out to always be cut in a standard format, no matter how much paper remains unprinted, activate "Format", thereby instructing the plotter to always cut the paper to the next largest format.

## Main Options 2

The "MainOptions 2" is also opened via the "General" drop down menu. Here you can alter the following settings:

- **Media type**

Select the type of medium to be used to print the drawing: Plain paper, Translucent, Film or Recycled Paper. The selection depends on the medium you have loaded on the rolls of your RW-7140 plotter.

- **Media source**

You can select one of the offered plotter rollers. You also have a choice between the options "Automatic" or "Bypass tray". The "Automatic" option means that the plotter automatically selects a suitable roller corresponding to the stipulated format. The "Bypass tray" option means that you introduce the print medium directly at the input tray.

- **Output tray**

Your plotter has two possibilities for the output of your printouts: "Front" and "Rear".

- **Fold program**

If a folder is connected, here you can adjust whether your fold

settings should be used. Click on "no fold" if folding is not required.

- **Title block**

As many folders expect the drawing head in different positions, here you can align the title block on the folder so that it is at the top after folding. With this setting, you tell the print application in which position the folder expects the title block. The program then turns the drawing into the position necessary for the folder.

## **Job Options**

In addition to the "MainOptions", you have four other general options that you can use to define the print job parameters:

- **Sample print**

Activate this option if you want to check the quality of a print. Only the first set of copies will then be printed. The print off of further sets of copies is stopped, so that you can check the quality of the print off. Then you will be asked, whether you would like to continue with the print out or abort.

- **Priority**

This shows what priority the job has been given by the user: Normal, High, Low, Wait. You can change the priority given here or set it to the highest level.

- **Delete after plot**

If you activate this option, the job is deleted again by RW-7140 PLOTBASE immediately after printing.

---

## **Part VI - Appendix**

# Index

## C

### Calcomp

Loading settings .....	40
Pen color .....	40
Pen source .....	40
Pen width .....	40
Saving settings .....	40

## H

### HPGL/2

Loading settings .....	37
Pen color .....	37
Pen source .....	37
Pen standards .....	39
Pen width .....	37
Saving settings .....	37

## P

Pen color .....	37
Pen settings .....	34

### PLOTCLIENT WIN

Distribution .....	24
--------------------	----

### Plotter

Reload .....	14
--------------	----

## R

### RW-7140 PLOTCLIENT HDI

Account .....	69
Authentication .....	73
Border .....	66
Change language .....	71
Contact .....	69
Copies .....	66
Cut mode .....	66
Document server .....	72
Fold program .....	66
Formats .....	67
Invert .....	67
Locked print .....	70

Media source .....	67
Media type .....	67
Mirror .....	67
Output .....	67
Plotter data .....	68
Printer monitor .....	68
Priority .....	70
Program mode .....	72
Rotate .....	68
Sample print .....	70
Stamp .....	70
User name .....	71

### RW-7140 PLOTCLIENT MAC

Cut mode .....	101
Fold program .....	102
Formats .....	100
Input tray .....	101
Invert .....	101
Media type .....	101
Mirror .....	100
Output .....	101
Priority .....	102
Rotate .....	100
Sample print .....	102
Title block .....	102

### RW-7140 PLOTCLIENT WEB

Account .....	86
Border .....	92
Calcomp .....	93
Collate .....	86
Combine .....	89
Comments box .....	87
Configuration .....	77
Copies .....	91
Cost center .....	86
Create job .....	83
Customer .....	87
Cut mode .....	92



Delete after plot .....	87	Border .....	28
Device status .....	98	Collate jobs .....	49
Distribution .....	89	Combine .....	23
Document server .....	89	Contact .....	24
Email notification .....	78	Copies .....	28
Email settings .....	80	Cost center .....	24
Entry .....	84	Customer .....	24
File formats .....	81	Cut mode .....	28
File pool .....	84	Delete .....	24
Fold program .....	87, 91	Device information .....	14
Format family .....	80	Document server .....	25
HPGL .....	94	Entries, add .....	52
Invert .....	92	Entries, delete .....	55
Job copies .....	87	Entries, multiple .....	54
Job flag sheet .....	87	File information .....	28
Locked print .....	87	Fold .....	28
Measurement .....	80	Invert .....	29
Media position .....	92	Job collate .....	23
Media source .....	90, 92	Job correction .....	21
Media type .....	87, 90	Job flag sheet .....	25
Medium .....	91	Job list .....	28
Medium information .....	98	Job name .....	25
Output device .....	87	Job sort .....	26
Output formats .....	80	Language, change .....	18
Output size .....	91	Locked print .....	25
Output Size .....	88	Mail .....	25
Output tray .....	88	Media position .....	29
Paper size .....	90	Media type .....	29
Plotter information .....	98	Mirror .....	29, 93
PPD file .....	98	Notes .....	26
Print order .....	90	Page range .....	30
Quick view .....	85	Picture type .....	30
Rotate .....	95	Plot server .....	16
Sample print .....	88	Print quality .....	30
Stamp .....	95	Priority .....	27
Title block .....	91	Project .....	27
User account .....	78	Quit .....	12
Workflow .....	82	Rotate .....	30
RW-7140 PLOTCLIENT WIN		Sample print .....	27
Account .....	23	Settings hierarchy .....	19

Size unit.....	17	Print quality .....	59
Source color profile .....	31	Project .....	62
Spool path default.....	15	Punch.....	63
Spool path setup .....	15	Raster resolution .....	59
Spool path, new .....	15	Reinforce .....	63
Stamp editor .....	42	Sample print.....	60
Start .....	12	Title block.....	62
Title block .....	32		
User name.....	27	S	
Work directory .....	17	Stamp	
RW-7140 WINPRINT		Configure .....	43
Account .....	62	Delete stamp .....	44
C-fold.....	63	Edit stamp .....	44
Combine .....	60	Font .....	46
Copies.....	58	Frame .....	45
Cost center .....	62	Gradation .....	47
Cross fold .....	63	Logo .....	48
Document server .....	60	Macros.....	47
Favor back.....	63	Mirror.....	44
Fold.....	62	Preview.....	46
Hanging strip .....	63	Rotate.....	44
Landscape .....	63	Scale position .....	45
Locked print.....	60	Stamp position.....	45
Media source .....	59	Stamp type .....	44, 95
Media type.....	59	Text .....	46
Output.....	59, 62	Synchronization.....	41
Page order.....	61		