

Model: Katana		Date:14-Jul-06	No.: RB234015
Subject: Service Manual Revision		Prepared by: S. Ishizu	
From: 2nd Tech Support Sec. Service Support Dept.			
Classification:	<input type="checkbox"/> Troubleshooting <input type="checkbox"/> Mechanical <input type="checkbox"/> Paper path <input type="checkbox"/> Product Safety	<input type="checkbox"/> Part information <input type="checkbox"/> Electrical <input type="checkbox"/> Transmit/receive <input type="checkbox"/> Other ()	<input type="checkbox"/> Action required <input checked="" type="checkbox"/> Service manual revision <input type="checkbox"/> Retrofit information

This document summarizes the corrections in the Service Manual for “Katana” (Machine Code: B234/235/236).

1. Added new step 8 <Page: 1-30>

7.Input the following telephone numbers with SP 5812.

- Service technician telephone number: SP 5812 001
- Service technician fax number: SP 5812 002
- For ordering consumables: SP 5812 003
- Sales representative: SP 5812 004

8.Install the language firmware if necessary.

2. Corrected the procedure <Page: 1-122>

Incorrect

1. Instruct the key operator to enable the key counter with the User Tools setting:

User Tools> System Settings> Key Counter Management> ON

Correct

1. Instruct the key operator to enable the key counter with the User Tools setting:

User Tools> System Settings> **Administrator Tools**> Key Counter Management> ON

3. Corrected PM table <Page: 2-8>

Incorrect

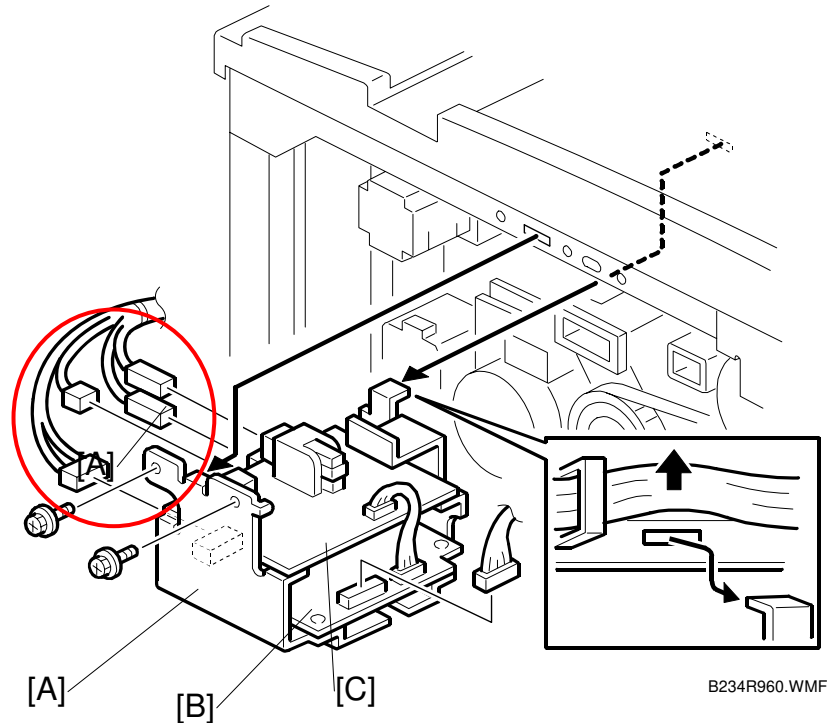
Hot roller gears	C/L			Lubricate (Barrierta 55L or SS552R)
------------------	-----	--	--	-------------------------------------

Correct

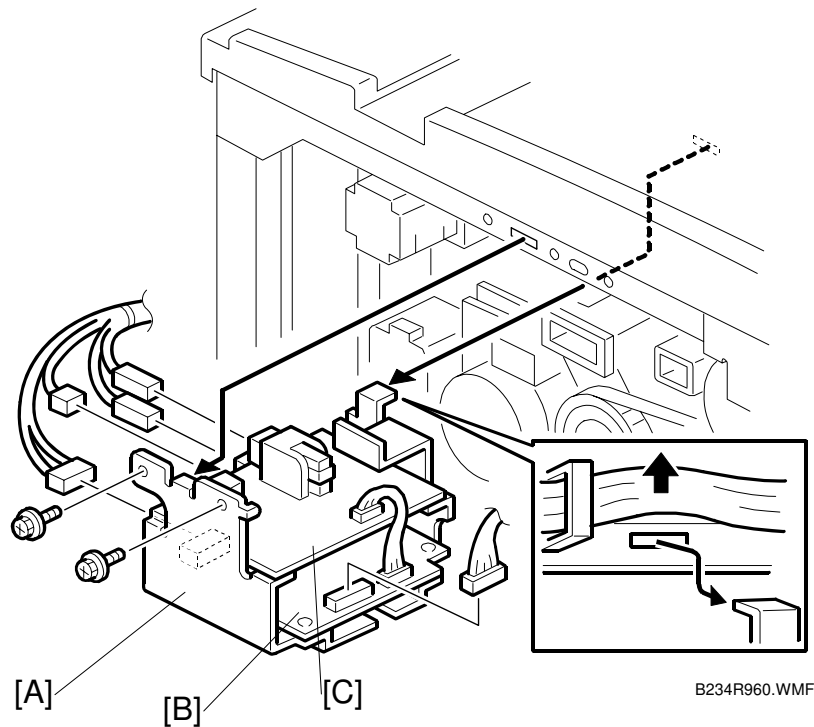
Hot roller gears	C/L			Lubricate with <u>Grease Barrierta – JFE5 5/2 (A2579300)</u>
------------------	-----	--	--	---

4. Corrected the Callout <Page: 3-166>

Incorrect:



Correct:



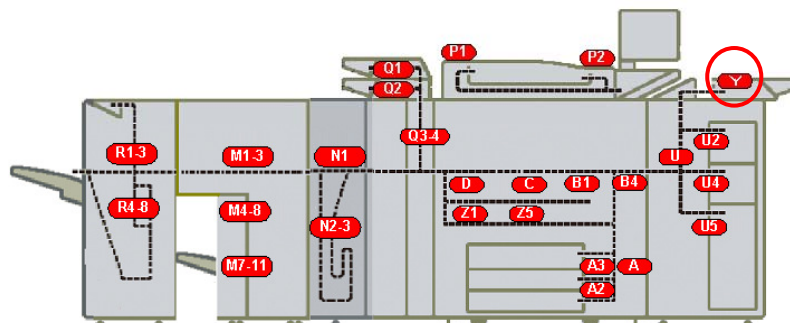
Model: Katana

Date:14-Jul-06

No.: RB234015

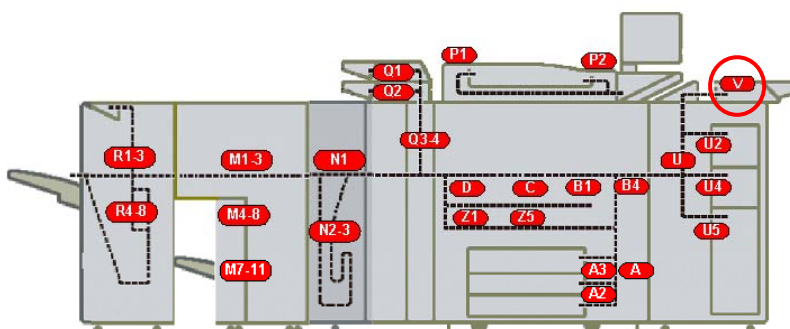
5. Corrected the label "Y" to "V". <Page: 4-5>

Incorrect:



B234T050X.WMF

Correct:



B234T050.WMF

Model: Katana

Date:14-Jul-06

No.: RB234015

6. Added SC876 <Page: 4-51>

SC876	D	Log Data Error The log data has been corrupted at power on, while the machine was operating, or when the machine was powered off during a print or copy cycle. The machine should never be switched off while it is printing or copying.
SC876-1		Log data file was corrupted at power on or while the machine was operating. • Format the HDD with SP5832-004.
SC876-2		The log was set for encryption without the encryption module installed: • At power on • While the machine was operating • When the log encryption setting was changed. • Install or replace and set the encryption module. • Enable the log encryption setting.
SC876-3		At power on, the log encryption key was disabled, causing an NVRAM malfunction. • Format the disk with SP5832-004.
SC876-4		At power on, the machine attempted log data encryption with the log encryption setting disabled (NVRAM malfunction). -or- At power on, log encryption was attempted with the log encryption setting disabled (NVRAM malfunction). • Format the disk with SP5832-004.
SC876-5		Error occurred at power on. Only the NVRAM was replaced with an NVRAM from another machine. -or- Only the HDD was replaced with an HDD unit from another machine. • Replace the NVRAM with the original NVRAM. • Replace the HDD with the original HDD. • If the error persists, format the HDD with SP5832-004.
SC876-99		Cause unknown. The error occurred at power on or while the machine was operating. • Contact the Ricoh design section.

SC876: More

If the error persists after doing the procedure described in the table above, do this procedure.

1. Switch the machine off, remove the HDD, then switch the machine on.
2. Do SP5801-019 then switch the machine off.
3. Install the HDD again and switch the machine on.
4. Do SP5832-004.
5. Cycle the machine off/on.
6. Do SP9730-002 and set to "1" (ON).
7. Do SP9730-003 and set to "1" (ON).
8. Do SP9730-004 and set to "1" (ON).
9. Cycle the machine off/on.

Model: Katana	Date:14-Jul-06	No.: RB234015
---------------	----------------	---------------

7. Edited title of SP5227 <Page: 5-55>

Old:

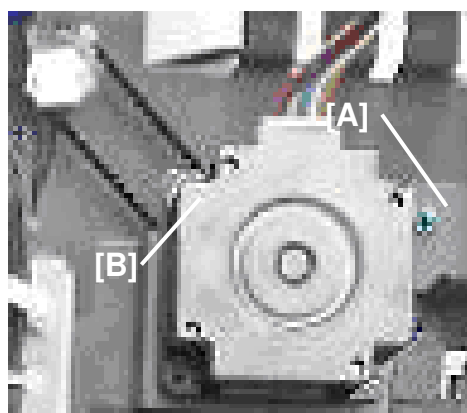
5227	Page Numbering
------	----------------

New:

5227	Page Numbering (<i>Bates Stamp</i>)
------	--

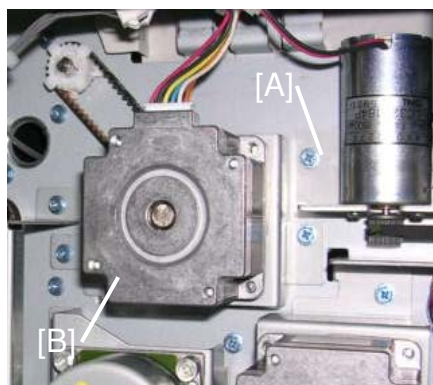
8. Replace with new photo <B830-34>

Old:



B830R901X.BMP

New:



B830R910.BMP

Model: Katana	Date:14-Jul-06	No.: RB234015
---------------	----------------	---------------

9. Corrected ELECTRICAL COMPONENT SUMMARY <Page: B830-72>

Incorrect:

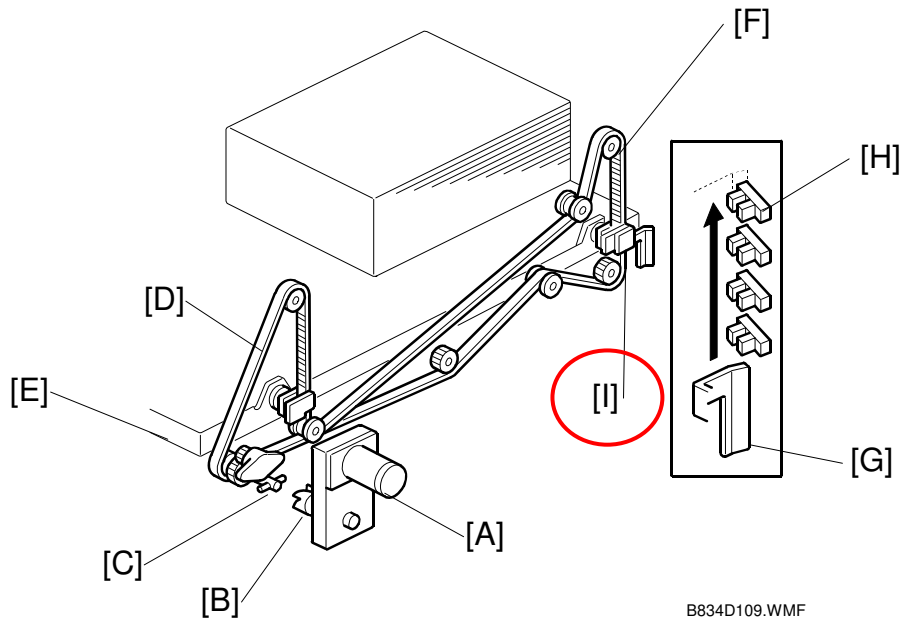
S38	Stapler Rotation Sensor 2	Paired with Stapler Rotation Sensor 1. This sensor pair controls the positioning of the corner stapler for the horizontal, 45° angle, and 75° angle stapling positions.
-----	---------------------------	---

Correct:

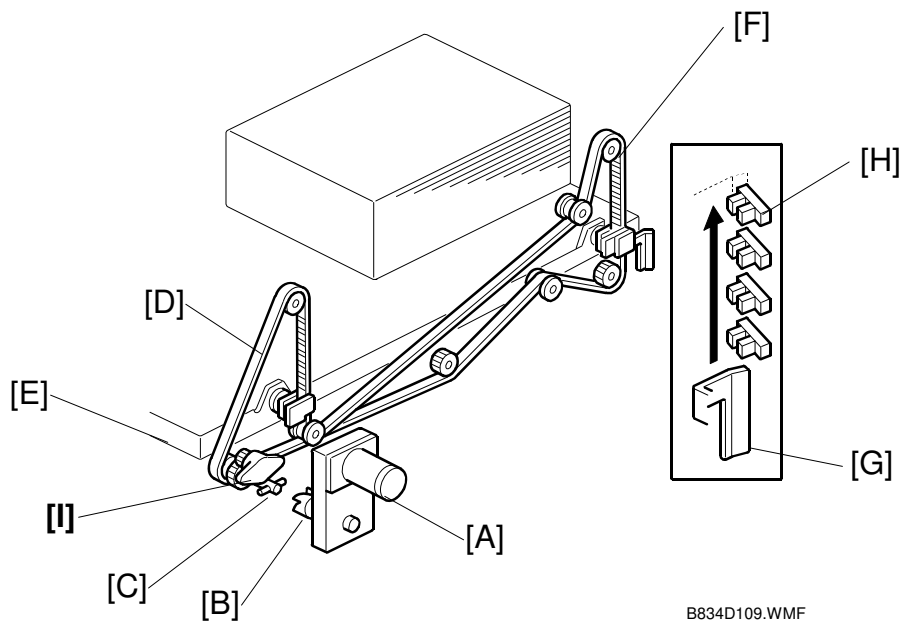
S38	Stapler Rotation Sensor 2	Paired with Stapler Rotation Sensor 1. This sensor pair controls the positioning of the corner stapler for the <u>horizontal and 45° angle stapling positions.</u>
-----	---------------------------	---

10. Moved callout “[I]” to correct position. <Page: B834-24>

Incorrect:



Correct:



Model: Katana

Date:14-Jul-06

No.: RB234015

11. Corrected the ELECTRICAL COMPONENTS <Page: B836-22>

Incorrect:

- | | |
|---|-------------------------------------|
| 1. Horizontal Transport Sensor | 10. Positioning Roller Motor |
| 2. Upper Transport Motor | 11. Edge Pressure Plate Solenoid |
| 3. Stapling Tray Junction Gate Solenoid | 12. Stack Tray Exit Sensor |
| 4. Finisher Entrance Sensor | 13. Booklet Stapler Board |
| 5. Entrance Motor | 14. Booklet Output Tray Full Sensor |
| 6. Lower Transport Motor | - Rear |
| 7. Booklet Pressure Roller Solenoid | 15. Booklet Output Tray Full Sensor |
| 8. Positioning Roller Solenoid | - Front |
| 9. Main Board (PCB) | 16. Front Door Safety Switch |
| | 17 Small Front Door Open Sensor |

Correct:

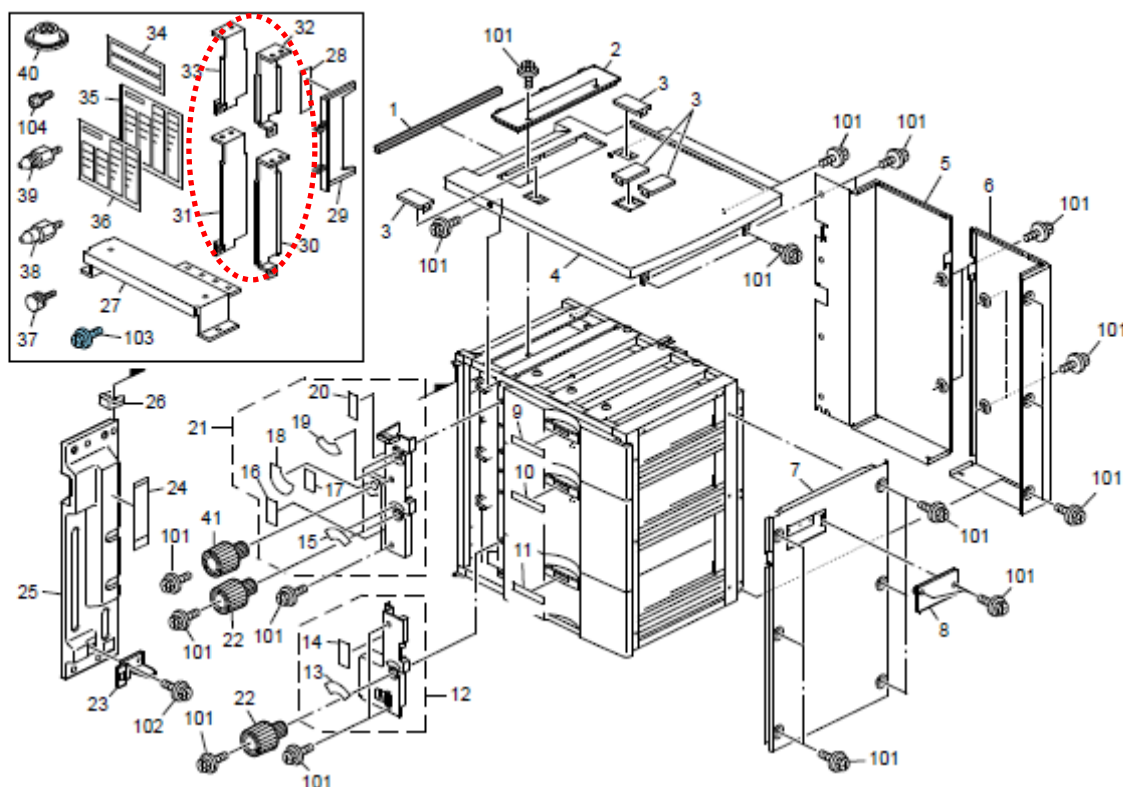
- | | |
|---|-------------------------------------|
| 1. Horizontal Transport Sensor | 10. <u>Main Board (PCB)</u> |
| 2. Upper Transport Motor | 11. Edge Pressure Plate Solenoid |
| 3. Stapling Tray Junction Gate Solenoid | 12. Stack Tray Exit Sensor |
| 4. Finisher Entrance Sensor | 13. Booklet Stapler Board |
| 5. Entrance Motor | 14. Booklet Output Tray Full Sensor |
| 6. Lower Transport Motor | - Rear |
| 7. Booklet Pressure Roller Solenoid | 15. Booklet Output Tray Full Sensor |
| 8. Positioning Roller Solenoid | - Front |
| 9. <u>Positioning Roller Motor</u> | 16. Front Door Safety Switch |
| | 17 Small Front Door Open Sensor |

Model: Katana-C1 LCIT RT5010 (B834)		Date: 18-Nov-10	No.: RB834001
Subject: Improvement of the bracket for postcards		Prepared by: T. Komori	
From: PP Service Planning Department 1G			
Classification:	<input type="checkbox"/> Troubleshooting	<input checked="" type="checkbox"/> Part information	<input type="checkbox"/> Action required
	<input type="checkbox"/> Mechanical	<input type="checkbox"/> Electrical	<input type="checkbox"/> Service manual revision
	<input type="checkbox"/> Paper path	<input type="checkbox"/> Transmit/receive	<input type="checkbox"/> Retrofit information
	<input type="checkbox"/> Product Safety	<input type="checkbox"/> Other ()	<input type="checkbox"/> Tier 2

Change: Shape of the postcard fence

Old Part Number	New Part Number	Description	Q'ty	Int	Page	Index	Note
B8342713	B8342717	BRACKET:POSTCARD:NO.1: REAR:ADHESION	1	O/O	as a set	3	33
B8342711	B8342719	BRACKET:POSTCARD:NO.2: REAR:ADHESION	1	O/O		3	31

1.EXTERIOR (B834)



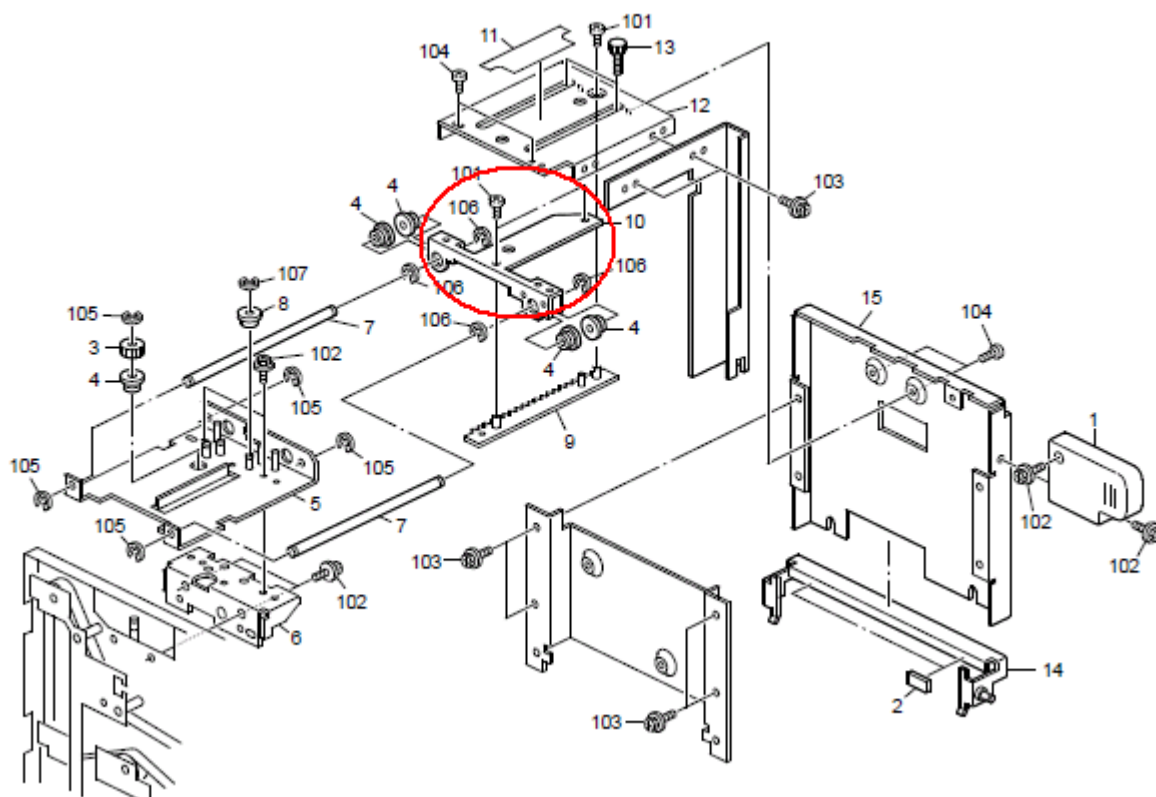
Model: LCIT 5020 / LCIT5010		Date: 23-May-11	No.: RB834002
Subject: New guide part for LCIT		Prepared by: H. Kawamura	
From: 1st PP Service Planning Sec., PP Service Planning			
Classification:	<input type="checkbox"/> Troubleshooting <input type="checkbox"/> Mechanical <input type="checkbox"/> Paper path <input type="checkbox"/> Product Safety	<input checked="" type="checkbox"/> Part information <input type="checkbox"/> Electrical <input type="checkbox"/> Transmit/receive <input type="checkbox"/> Other ()	<input type="checkbox"/> Action required <input type="checkbox"/> Service manual revision <input type="checkbox"/> Retrofit information <input type="checkbox"/> Tier 2

This RTB has been issued to announce that some parts for the LCIT have been changed

Old part number	New part number	Description	Q'ty	Int	Page	Index	Note
B8343332	B8343341	GUIDE:UPPER FRONT	1	x/x	7	10	B834
B8343334	B8343343	GUIDE:UPPER REAR	1	x/x	9	14	B834
B8343339	B8343345	RACK:UPPER	1	x/x	21	9	B834
B8343349	B8343345	RACK:UPPER	1	x/x	23	16	B834
D3553332	D3553334	GUIDE:LM-6:UPPER FRONT:PEEN	1	x/x	9	10	D355

B8343341

3.4TH/6TH PAPER TRAY 2 (B834)



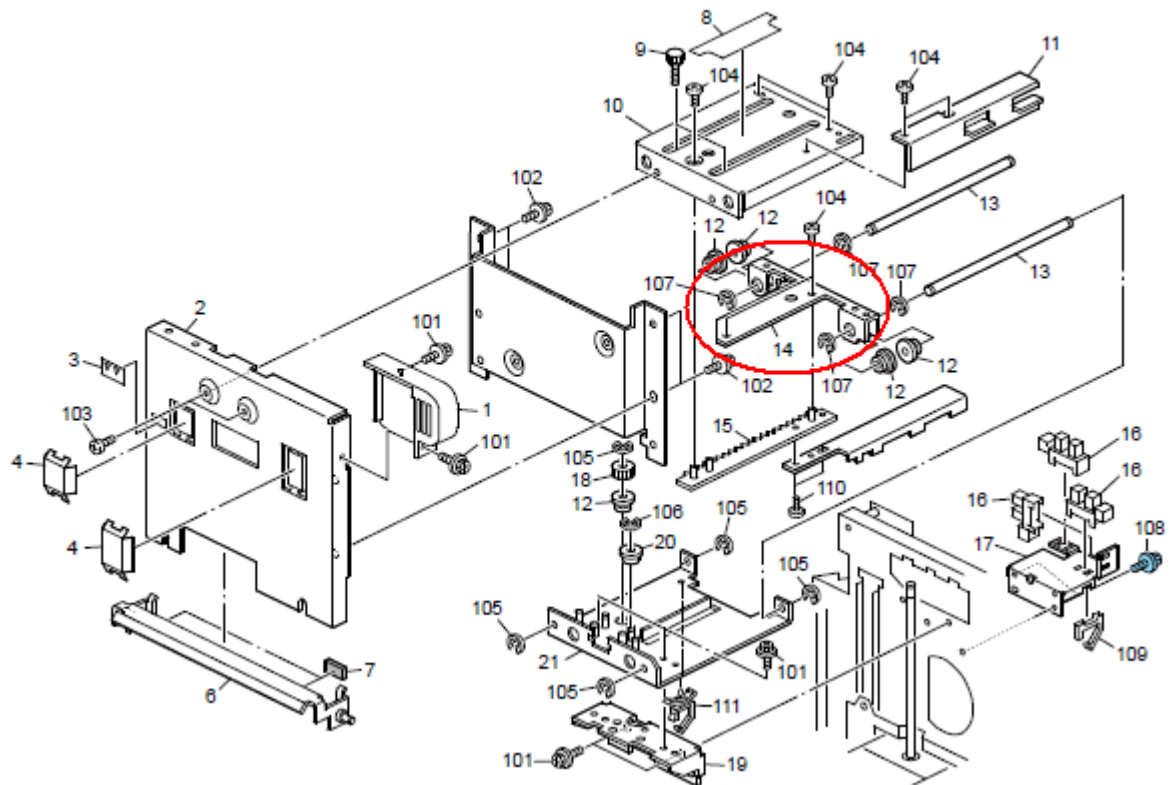
Model: LCIT 5020 / LCIT5010

Date: 23-May-11

No.: RB834002

B8343343

4.4TH/6TH PAPER TRAY 3 (B834)



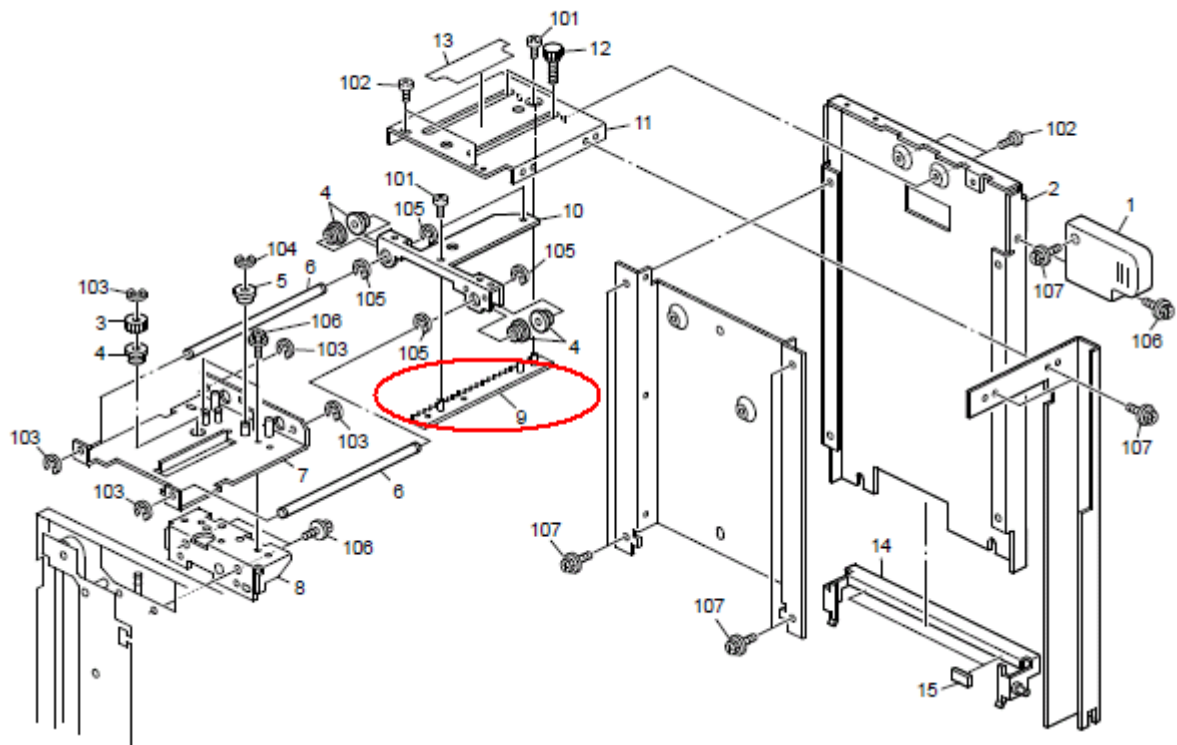
Model: LCIT 5020 / LCIT5010

Date: 23-May-11

No.: RB834002

B8343345

10.5TH PAPER TRAY 2 (B834)



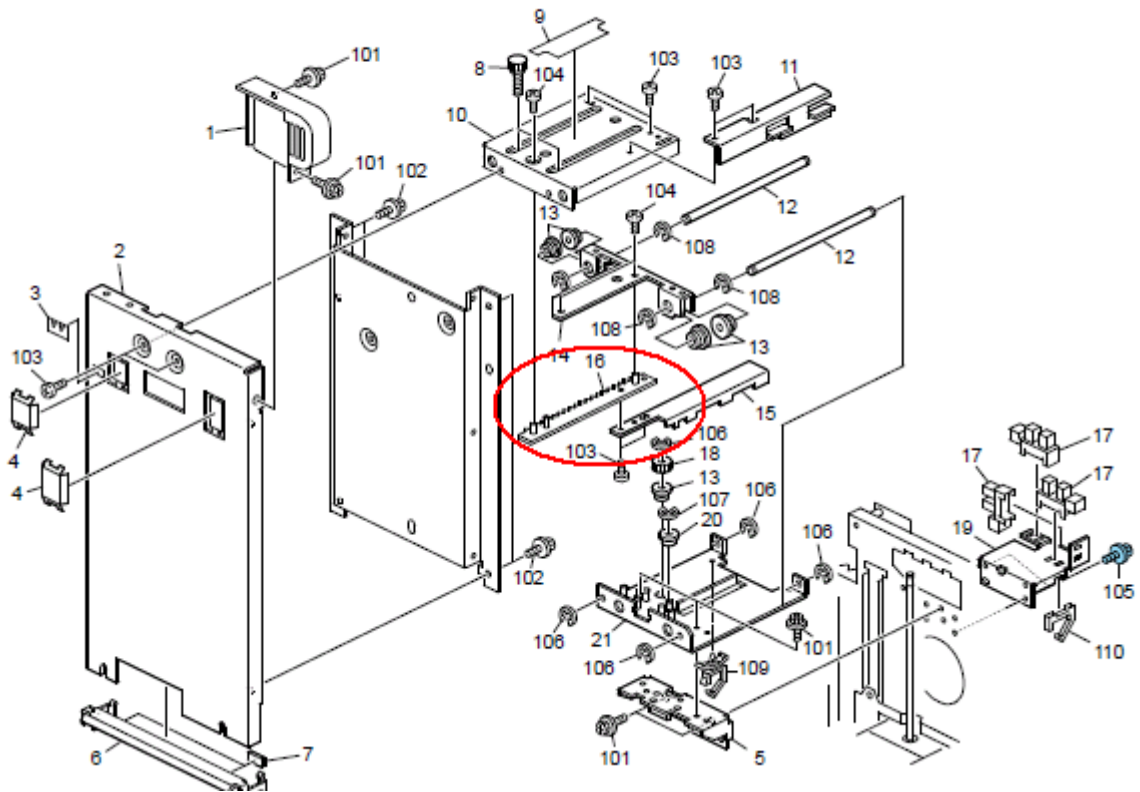
Model: LCIT 5020 / LCIT5010

Date: 23-May-11

No.: RB834002

B8343345

11.5TH PAPER TRAY 3 (B834)



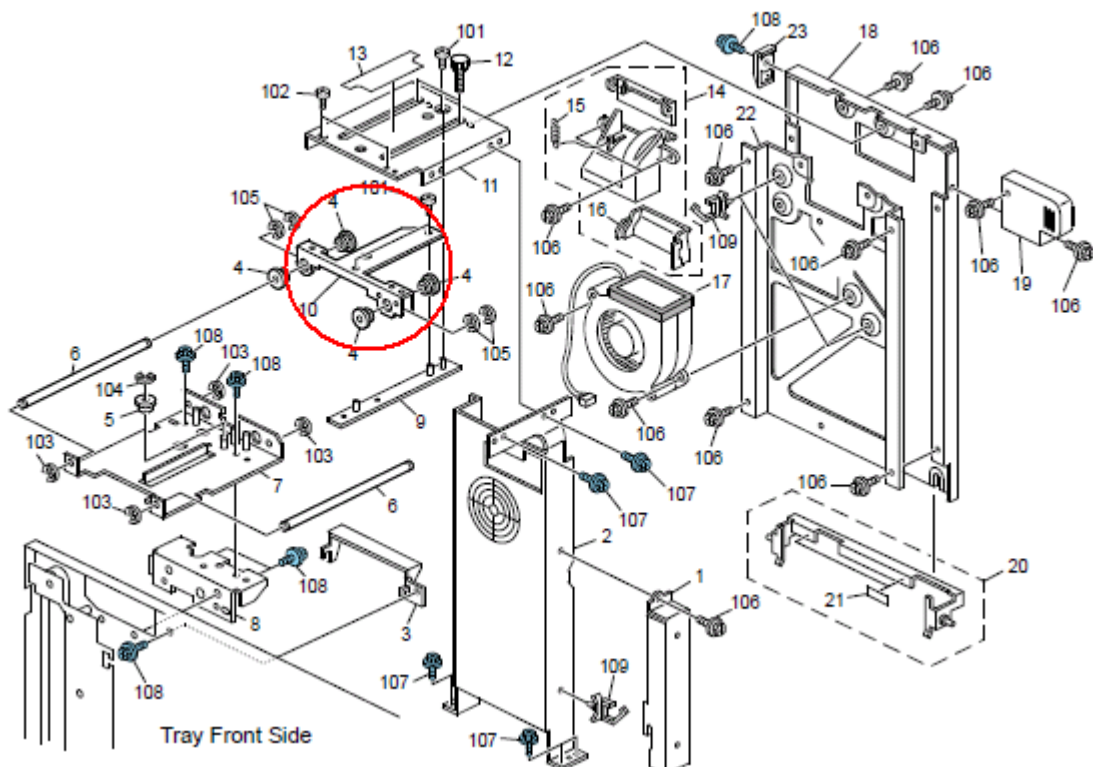
Model: LCIT 5020 / LCIT5010

Date: 23-May-11

No.: RB834002

D3553334

4.Paper Tray 2 (D355)



Model: LCIT RT5010 (B834)		Date: 22-Sep-11	No.: RB834003
Subject: Part Changes		Prepared by: T. Komori	
From: PP Service Planning Department 1G			
Classification:	<input type="checkbox"/> Troubleshooting <input checked="" type="checkbox"/> Part information <input type="checkbox"/> Action required <input type="checkbox"/> Mechanical <input type="checkbox"/> Electrical <input type="checkbox"/> Service manual revision <input type="checkbox"/> Paper path <input type="checkbox"/> Transmit/receive <input type="checkbox"/> Retrofit information <input type="checkbox"/> Product Safety <input type="checkbox"/> Other () <input type="checkbox"/> Tier 2		

Change: Shape of the parts

Reason: Parts standardization to enable usage of the following parts for other models

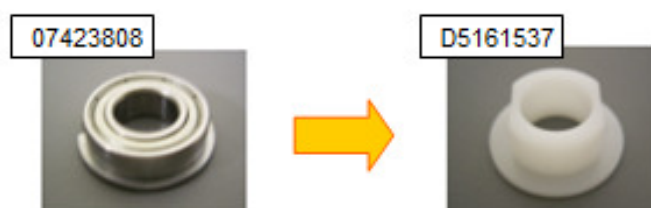
Old Part Number	New Part Number	Description	Q'ty	I/C		Page	Index
B8343349	B8343345	RACK:UPPER	2	X/X	O/O as a set	23 9	16 15
B8343334	B8343343	GUIDE:UPPER REAR	2	X/X		23 9	14 14
B8343332	B8343341	GUIDE:UPPER FRONT	2	X/X		21 7	10 10
B8343358	B8343356	COVER:UPPER REAR	1	X/X		9	10
B8343357	B8343355	COVER:UPPER FRONT	2	X/X		21 7	11 12
B8343339	B8343345	RACK:UPPER	2	X/X		21 7	9 9

Model: LCIT RT5040 (D453)		Date: 25-Nov-11	No.: RD453006
Subject: Part Changes (Bearing & Plates)		Prepared by: A. Takada	
From: PP Tech Service Dept., 1st PP Tech Service Sect.			
Classification:	<input type="checkbox"/> Troubleshooting <input type="checkbox"/> Mechanical <input type="checkbox"/> Paper path <input type="checkbox"/> Product Safety	<input checked="" type="checkbox"/> Part information <input type="checkbox"/> Electrical <input type="checkbox"/> Transmit/receive <input checked="" type="checkbox"/> Other ()	<input type="checkbox"/> Action required <input type="checkbox"/> Service manual revision <input type="checkbox"/> Retrofit information <input type="checkbox"/> Tier 2

Change: Bearing and the shape of the accompanying plates

Reason: To share common parts with the LCIT RT5060 (D516)

1, The bearing was changed as shown in the photo below.



2, The size of the holes on the plates were reduced to correspond with the modified bearings.

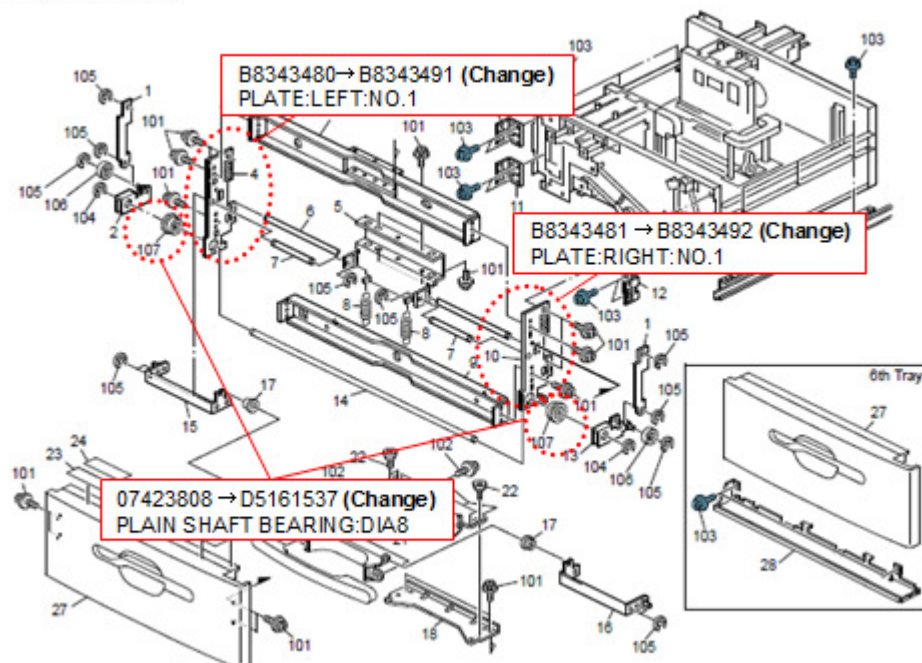


LCIT RT5040 (D453)

Old Part Number	New Part Number	Description	Q'ty	Int	Page	Index	Note
07423808	D5161537	PLAIN SHAFT BEARING:DIA8	4	X/O	4 18	107 105	
B8343395	B8343391	PLATE:LEFT:NO.2	1	X/O	18	3	
B8343396	B8343392	PLATE:RIGHT:NO.2	1	X/O	18	11	
B8343480	B8343491	PLATE:LEFT:NO.1	1	X/O	4	4	
B8343481	B8343492	PLATE:RIGHT:NO.1	1	X/O	4	10	

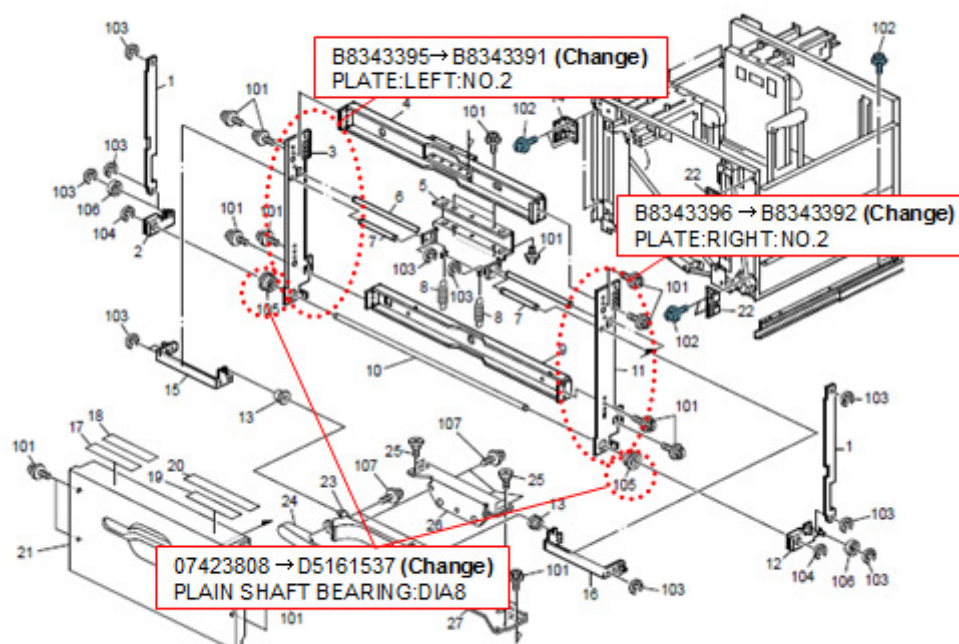
- Make sure all 5 parts shown in the above table are replaced as a set.
- The modification described in this bulletin also applies to RT5010 (B834).

2.Tray 4/6 Unit 1 (D453)



4

9.Tray 5 Unit 1 (D453)



16

Model: LCIT RT5010 (B834)		Date: 06-Jan-12	No.: RB834004
Subject: Part Changes; Holder and Side fence bracket		Prepared by: A. Takada	
From: PP Tech Service Dept., 1st PP Tech Service Sect.			
Classification:	<input type="checkbox"/> Troubleshooting <input type="checkbox"/> Mechanical <input type="checkbox"/> Paper path <input type="checkbox"/> Product Safety	<input checked="" type="checkbox"/> Part information <input type="checkbox"/> Electrical <input type="checkbox"/> Transmit/receive <input type="checkbox"/> Other ()	<input type="checkbox"/> Action required <input type="checkbox"/> Service manual revision <input type="checkbox"/> Retrofit information <input type="checkbox"/> Tier 2

Change: Holder and Side fence bracket

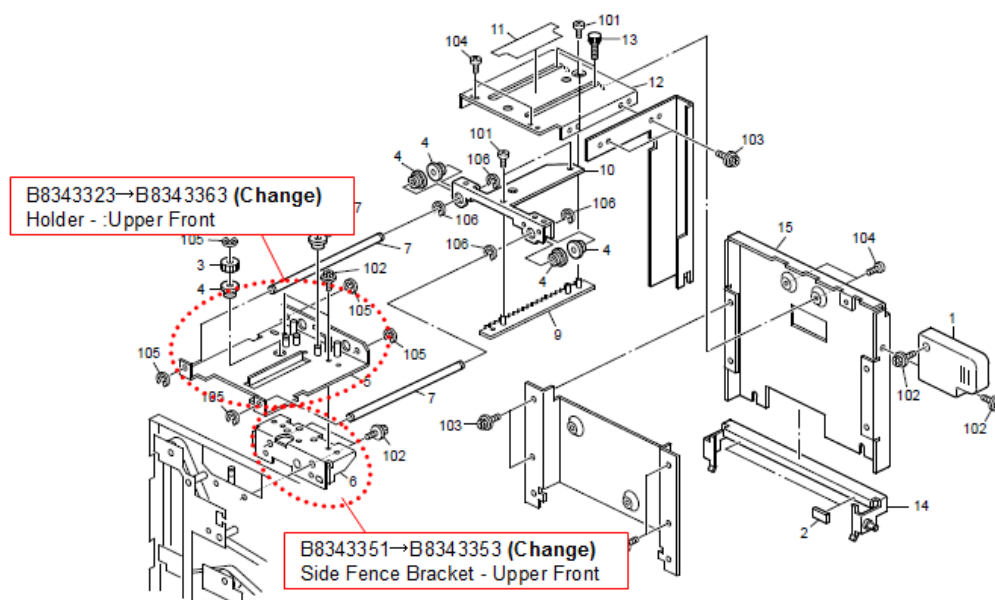
Reason: To allow usage of common parts for different products

Model: LCIT RT5010 (B834)

Old Part Number	New Part Number	Description	Q'ty	Int	Page	Index	Note
B8343323	B8343363	Holder - :Upper Front	1	X/X	7	5	A
B8343329	B8343364	Holder - Upper Rear	1	X/X	9	21	A
B8343351	B8343353	Side Fence Bracket - Upper Front	1	X/O	7	6	A
B8343352	B8343354	Side Fence Bracket - Upper Rear	1	X/O	9	19	A

- **When replacing the above parts, replace all 4 parts as a set.**
- **The modification described in this bulletin also applies to Aegis-C1 (D016), LCIT RT4000 (D350), LCIT RT5020 (D355), LCIT RT5040 (D453).**

3.4TH/6TH PAPER TRAY 2 (B834)



Model: LCIT RT5010 (B834)

Date: 06-Jan-12

No.: RB834004

4.4TH/6TH PAPER TRAY 3 (B834)

