

Reissued: 16-Mar-04

Model: Dolphin 2 nd Roll Tray	Date: 07-Aug-01	No.: MB340001a
--	-----------------	----------------

MB Correction

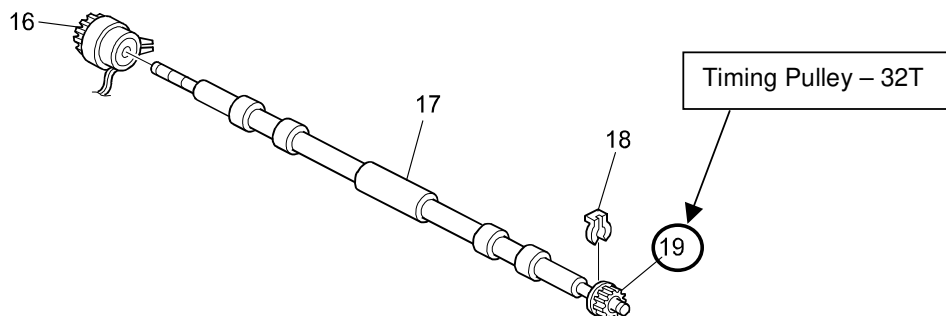
The items in ***bold italics*** have been added.

Modified Article: Parts Catalog		Prepared by: F.Noguchi	
From: 2nd Tech. Support Sec. Service Support Dept.			
Reason for Modification:	<input checked="" type="checkbox"/> Parts catalog correction	<input type="checkbox"/> Vendor change	<input type="checkbox"/> To meet standards ()
	<input type="checkbox"/> To facilitate assembly	<input type="checkbox"/> To improve reliability	
	<input type="checkbox"/> Part standardization	<input type="checkbox"/> Other	

The timing pulley had been deleted due to a parts catalog correction.
However, as per a field request, this part has been registered as a service part.

2nd Tray Unit (Page 9)

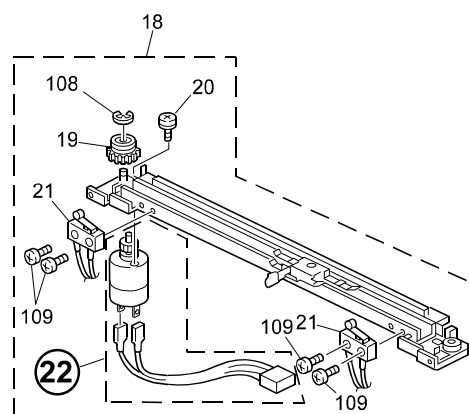
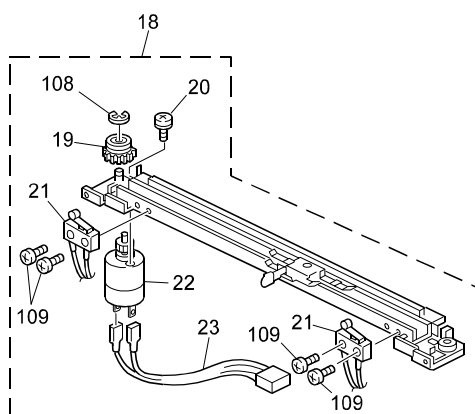
Part number	Description	Q'ty	Page	Index
<i>AB030679</i>	<i>Timing Pulley – 32T</i>	<i>1</i>	<i>9</i>	<i>19</i>



Model: 2nd Roll Tray TypeA for Dolphin		Date: 6-Oct-03	No.: MB340002
Modified Article: DC Motor – DC24V 7.18W		Prepared by: F.Noguchi	
From: 2nd Tech. Support Sec. Service Support Dept.			
Reason for Modification:	<input type="checkbox"/> Parts catalog correction <input type="checkbox"/> To facilitate assembly <input type="checkbox"/> Part standardization	<input type="checkbox"/> Vendor change <input type="checkbox"/> To improve reliability <input checked="" type="checkbox"/> Other	<input type="checkbox"/> To meet standards ()

To facilitate servicing, the DC Motor service part has been changed to include the harness and gear.

Old part number	New part number	Description	Q'ty	Int	Page	Index	Note
AX050092		DC Motor – DC24V 7.18W	1 - 0	X/	7	22	
B0102836		Motor Harness	1 - 0	X/	7	23	
	B0102852	DC Motor: DC24V 7.18W	0 - 1	/O	7	22	



Model: Dolphin 2nd Roll Tray		Date: 18-Dec-03	No.: MB340003
Modified Article: Middle Holder - Paper Holder		Prepared by: F.Noguchi	
From: 2nd Tech. Support Sec. Service Support Dept.			
Reason for Modification:	<input checked="" type="checkbox"/> Parts catalog correction <input type="checkbox"/> To facilitate assembly <input type="checkbox"/> Part standardization	<input type="checkbox"/> Vendor change <input type="checkbox"/> To improve reliability <input type="checkbox"/> Other	<input type="checkbox"/> To meet standards ()

The following has been changed due to parts standardization with the new model.

Old part number	New part number	Description	Q'ty	Int	Page	Index	Note
B0102794		Middle Holder – Paper Holder	1 - 1	O/O	7	10	
	B6412794	Holder: Paper Holder: Middle					

Model: Dolphin 2nd Roll Tray		Date: 21-Sep-07	No.: MB340004
Modified Article: Stepper Motor		Prepared by: F.Noguchi	
From: 2nd Tech. Support Sec. Service Support Dept.			
Reason for Modification:	<input type="checkbox"/> Parts catalog correction <input checked="" type="checkbox"/> Vendor change <input type="checkbox"/> Other <input type="checkbox"/> To facilitate assembly <input type="checkbox"/> To improve reliability <input type="checkbox"/> To meet standards <input type="checkbox"/> Part standardization <input type="checkbox"/> Product Safety ()		

Old part number	New part number	Description	Q'ty	Int	Page	Index	Note
AX020292	AX060295	Stepper Motor: DC24V 14.8W	1 - 1	O/O	9	27	
AX060295	B1882869	Stepper Motor: DC24V 14.8W	1 - 1	O/O	9	27	

Change: Part number

Reason: Parts standardization with Dolphin-C2

Model: Dolphin 2 nd Roll Tray		Date: 8-Feb-08	No.: MB340005
Modified Article: Paper Holder Brake		Prepared by: F.Noguchi	
From: 2nd Tech. Support Sec. Service Support Dept.			
Reason for Modification:	<input type="checkbox"/> Parts catalog correction <input type="checkbox"/> Vendor change <input type="checkbox"/> Other <input type="checkbox"/> To facilitate assembly <input type="checkbox"/> To improve reliability <input type="checkbox"/> To meet standards <input checked="" type="checkbox"/> Part standardization <input type="checkbox"/> Product Safety ()		

Old part number	New part number	Description	Q'ty	Int	Page	Index	Note
B3532766		PAPER HOLDER BRAKE	2 - 2	O/O	13	3	
	B1882666	BRAKE:PAPER HOLDER					

Change/ Reason: Due to part standardization with Dolphin-C2.

Model: Dolphin 2nd Roll Tray		Date: 25-Sep-08	No.: MB340006
Modified Article: Guide Plate: Exit: Inner		Prepared by: F.Noguchi	
From: 2nd Tech. Support Sec. Service Support Dept.			
Reason for Modification:	<input type="checkbox"/> Parts catalog correction <input type="checkbox"/> Vendor change <input type="checkbox"/> Other <input type="checkbox"/> To facilitate assembly <input type="checkbox"/> To improve reliability <input type="checkbox"/> To meet standards <input checked="" type="checkbox"/> Part standardization <input type="checkbox"/> Product Safety ()		

Old part number	New part number	Description	Q'ty	Int	Page	Index	Note
B3402723	B1892723	Guide Plate: Exit: Inner	1 - 1	O/O	7	5	
B1892723		Guide Plate: Exit: Inner	1 - 1	O/O	7	5	
	B1892724	Guide Plate: Exit: Inner: Lower Paper Feed					

Change/ Reason: Due to part standardization with new model.