

Model: K-C2 1Bin Tray		Date: 22-Aug-06	No.: MB621001
Modified Article: DC Selenoid Gate		Prepared by: Y.Murata	
From: 1st Tech. Support Sec. Service Support Dept.			
Reason for Modification:	<input type="checkbox"/> Parts catalog correction <input type="checkbox"/> Vendor change <input type="checkbox"/> Other <input type="checkbox"/> To facilitate assembly <input type="checkbox"/> To improve reliability <input checked="" type="checkbox"/> To meet standards (RoHs compliant) <input type="checkbox"/> Part standardization <input type="checkbox"/> Product Safety		

Old part number	New part number	Description	Q'ty	Int	Page	Index	Note
AX110097	AX110110	DC Selenoid Gate	1	X/O	3	12	

Change: The materials for these parts were changed.

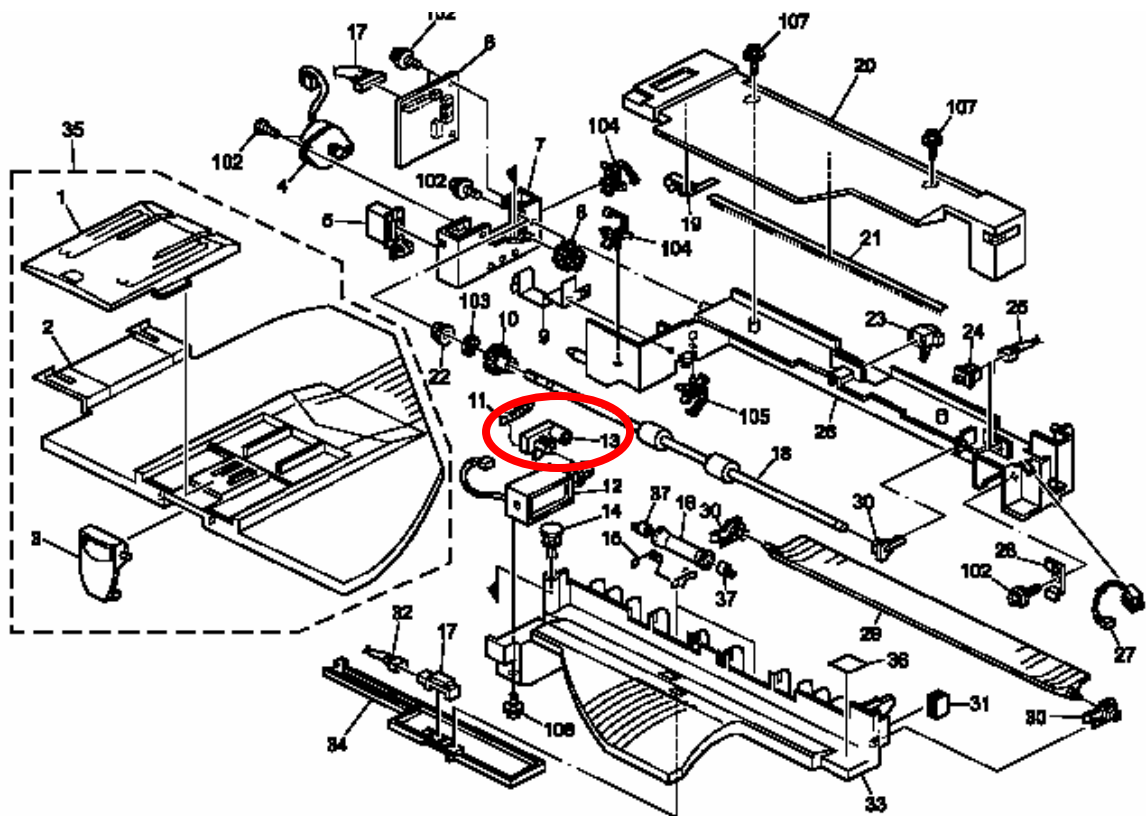
Reason: To comply with the RoHS Directive.

Model: K-C2 1Bin Tray		Date: 5-Mar-07	No.: MB621002
Modified Article: Solenoid Lever		Prepared by: Y.Yoshida	
From: 1st Tech. Support Sec. Service Support Dept.			
Reason for Modification:	<input type="checkbox"/> Parts catalog correction <input type="checkbox"/> Vendor change <input type="checkbox"/> Other <input type="checkbox"/> To facilitate assembly <input checked="" type="checkbox"/> To improve reliability <input type="checkbox"/> To meet standards (RoHs compliant) <input type="checkbox"/> Part standardization <input type="checkbox"/> Product Safety		

Old part number	New part number	Description	Q'ty	Int	Page	Index	Note
B6214484	B2614485	Solenoid Lever	1	X/O	3	13	

Change: The diameter of the solenoid lever pin was decreased.

Reason: So that the pin can fit into the pin hole easier.





Part Change Information List

Date: March 31, 2011

Model	Code	PCIL Nr.	PCIL Correcti on	Old part number	New part number	Description	Old Q'ty	New Q'ty	Int	3DPC	Page	Index	Set	Set Int	RTB	Note	Ref. Nr.	ECN Nr.
K-C2 1-bin Tray	B621	201103		AA120094	B1214490	ANTISTATIC BRUSH	1	1	O/O		3	21					V1100511	11021228



Part Change Information List

Date: October 31, 2011

Model	Code	PCIL Nr.	PCIL Correction	Old part number	New part number	Description	Old Q'ty	New Q'ty	Int	3DPC	Page	Index	Set	Set Int	RTB	Note	Ref. Nr.	ECN Nr.
K-C2 1-bin Tray	B621	201110		B1214490	D0194453	DISCHARGE BRUSH:PAPER EXIT SUB-UNIT	1	1	O/O		3	21					V1101086	11050641