

**1-BIN TRAY UNIT**  
**(Machine Code: B480)**

# 1. REPLACEMENT AND ADJUSTMENT

## ⚠ CAUTION

Turn off the main power switch and unplug the machine before beginning any of the procedures in this section.

**NOTE:** This manual uses the following symbols.

☞ : See or Refer to

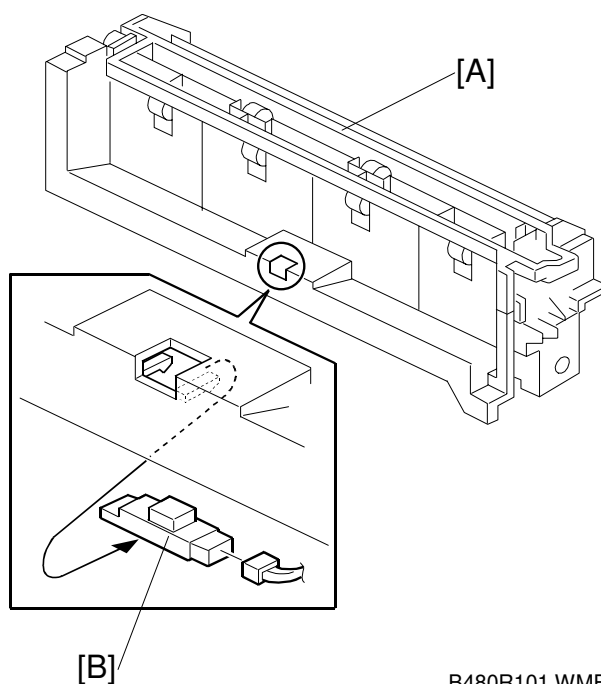
🔧 : Screws

🔌 : Connector

🔗 : Clip ring

Ⓢ : E-ring

## 1.1 PAPER SENSOR REMOVAL



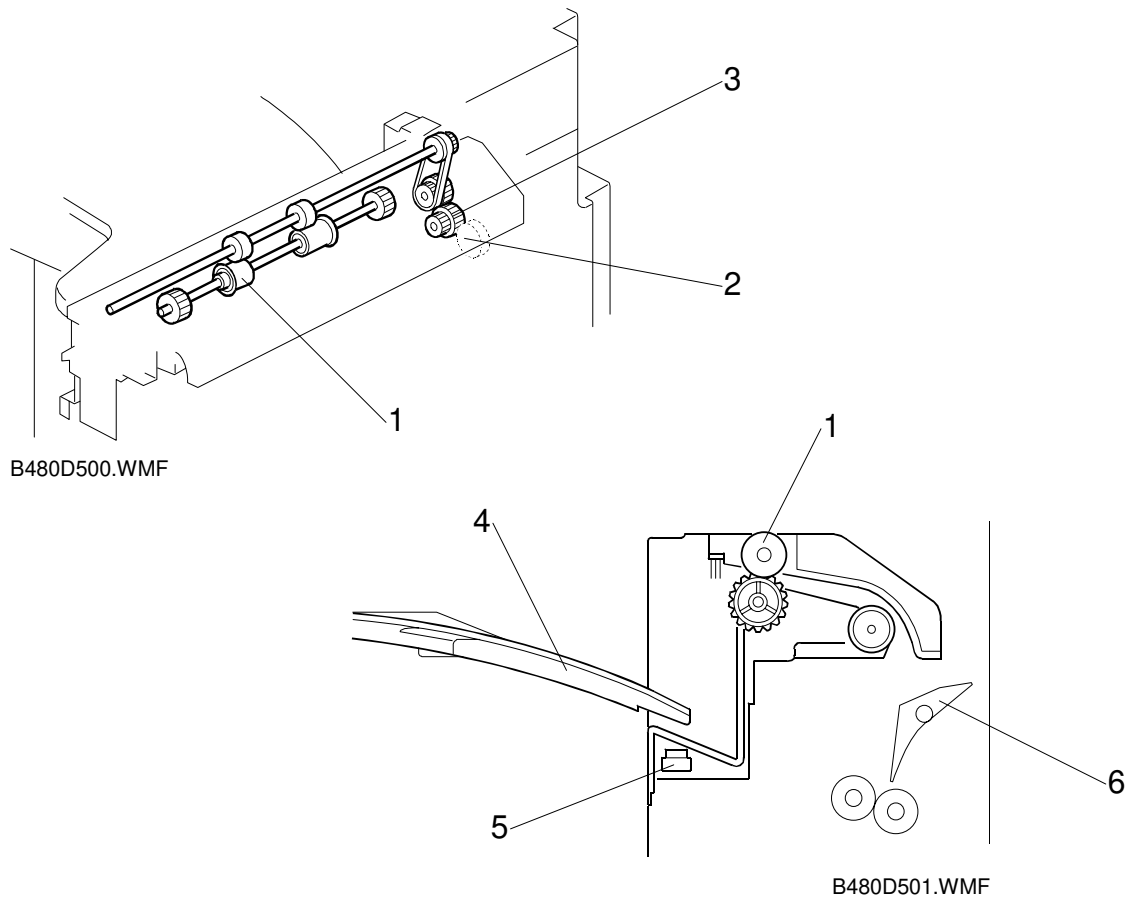
B480R101.WMF

1. 1-bin tray
2. 1-bin sorter unit [A]
3. Paper sensor [B] (🔌 x 1)

---

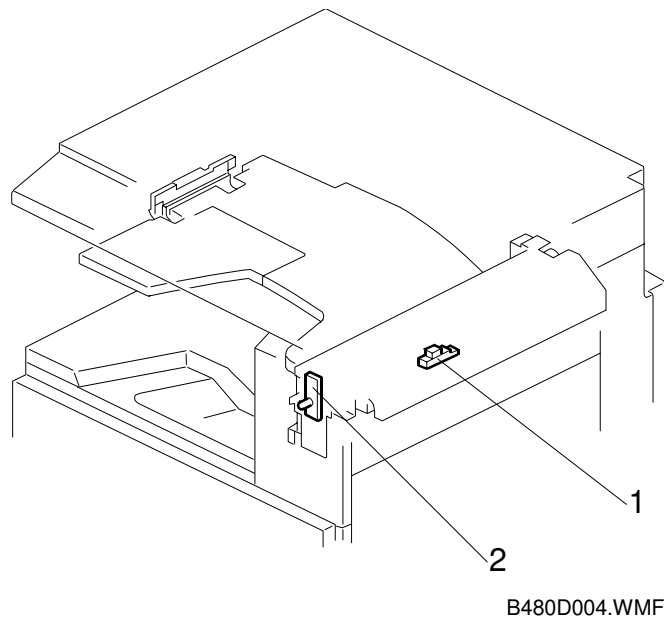
## 2. DETAILED DESCRIPTION

### 2.1 MECHANICAL COMPONENT LAYOUT



1. Exit Rollers
2. Junction Gate Gear
3. Drive Gear
4. Paper Tray
5. Paper Sensor
6. Junction Gate (Interchange Unit)

2.2 ELECTRICAL COMPONENT LAYOUT



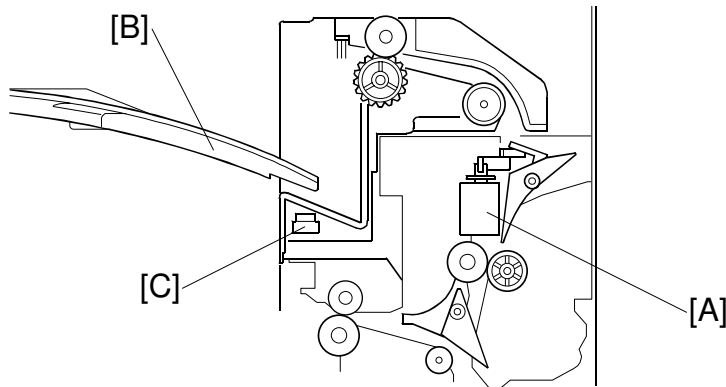
- 1. Paper Sensor
- 2. 1-bin Sorter Exit Tray LED  
(located in the copier)

2.3 ELECTRICAL COMPONENT DESCRIPTION

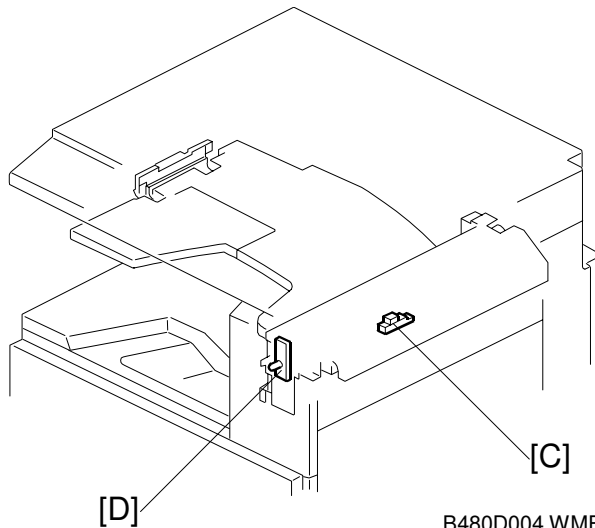
Symbol	Name	Function	Index No.
<b>Sensors</b>			
S1	Paper	Detects whether there is paper on the tray.	1
<b>LEDs</b>			
LED1	1 Bin Exit Tray	Indicates when there is paper in the tray. This is located in the copier.	2

Peripherals

## 2.4 BASIC OPERATION



B480D502.WMF



B480D004.WMF

At the appropriate time after the leading edge of the first sheet of copy paper reaches the copier's registration roller, the junction gate solenoid [A] in the interchange unit turns on to switch the junction gate to direct the paper to the tray [B].

The junction gate solenoid turns off at the appropriate time after the paper is directed to the tray. The main motor in the copier stops after the final sheet passes the paper sensor [C] and arrives on the tray.

The paper sensor [C] turns on when there is paper in the tray, and the paper indicator [D] turns on.

The tray can be opened for easier jam removal by swinging the tray to the left.