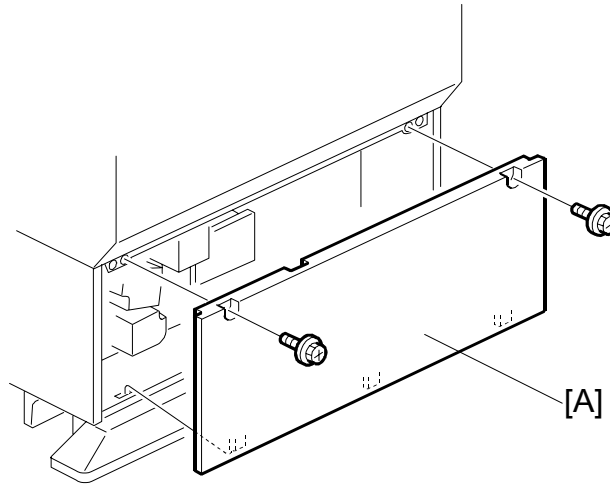


TWO-TRAY PAPER FEED UNIT

(Machine Code: B598)

1. REPLACEMENT AND ADJUSTMENT

1.1 COVER REPLACEMENT

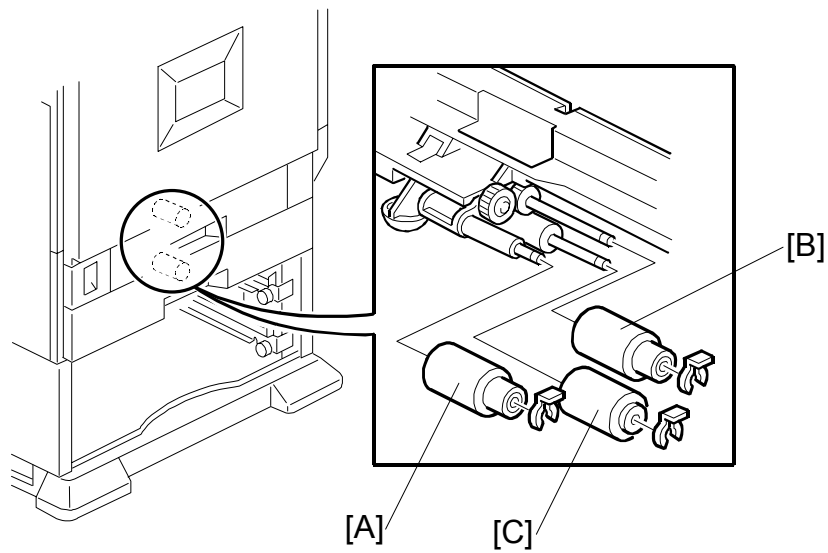


B598R102.WMF

1. Rear cover [A] (⌀ x 2)

1.2 ROLLER REPLACEMENT

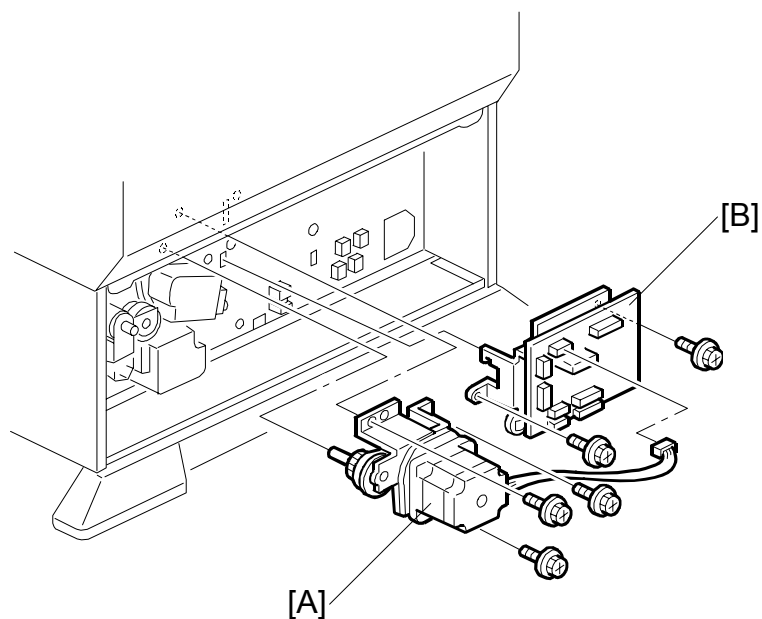
1.2.1 PAPER FEED, SEPARATION, AND PICK-UP ROLLERS



B598R101.WMF

1. Paper tray
2. Pick-up roller [A] (1 hook)
3. Paper Feed Roller [B] (1 x 1)
4. Separation Roller [C] (1 x 1)

1.3 PAPER FEED MOTOR AND MAIN BOARD

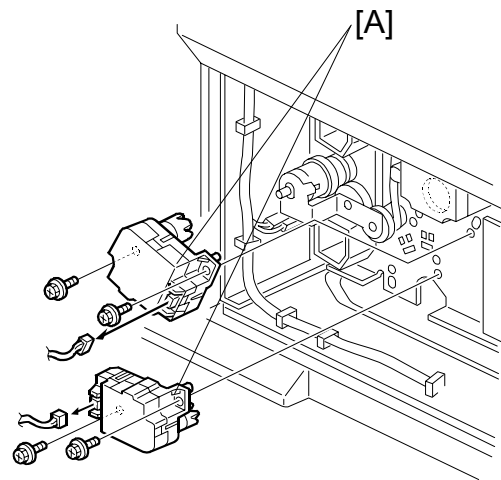


B598R103.WMF

1. Rear cover (🔑 1.1)
2. Paper feed motor [A] (🔑 x 1, 🔑 x 3)
3. Main board [B] (🔑 x 2)

1.4 TRAY LIFT MOTORS

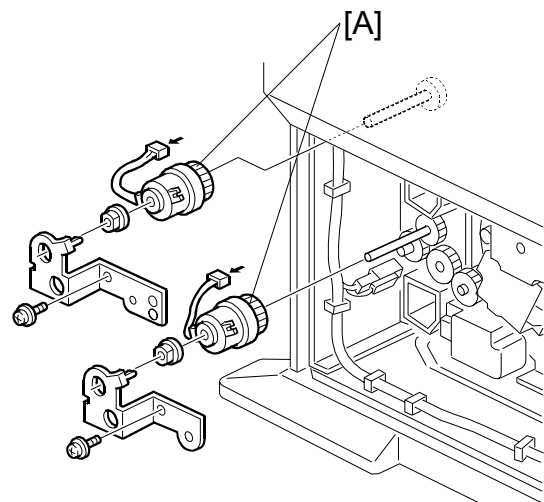
1. Rear cover (🔩 1.1)
2. Tray lift motor [A] (🔌 x 1, ⚙️ x 2)



B598R104.WMF

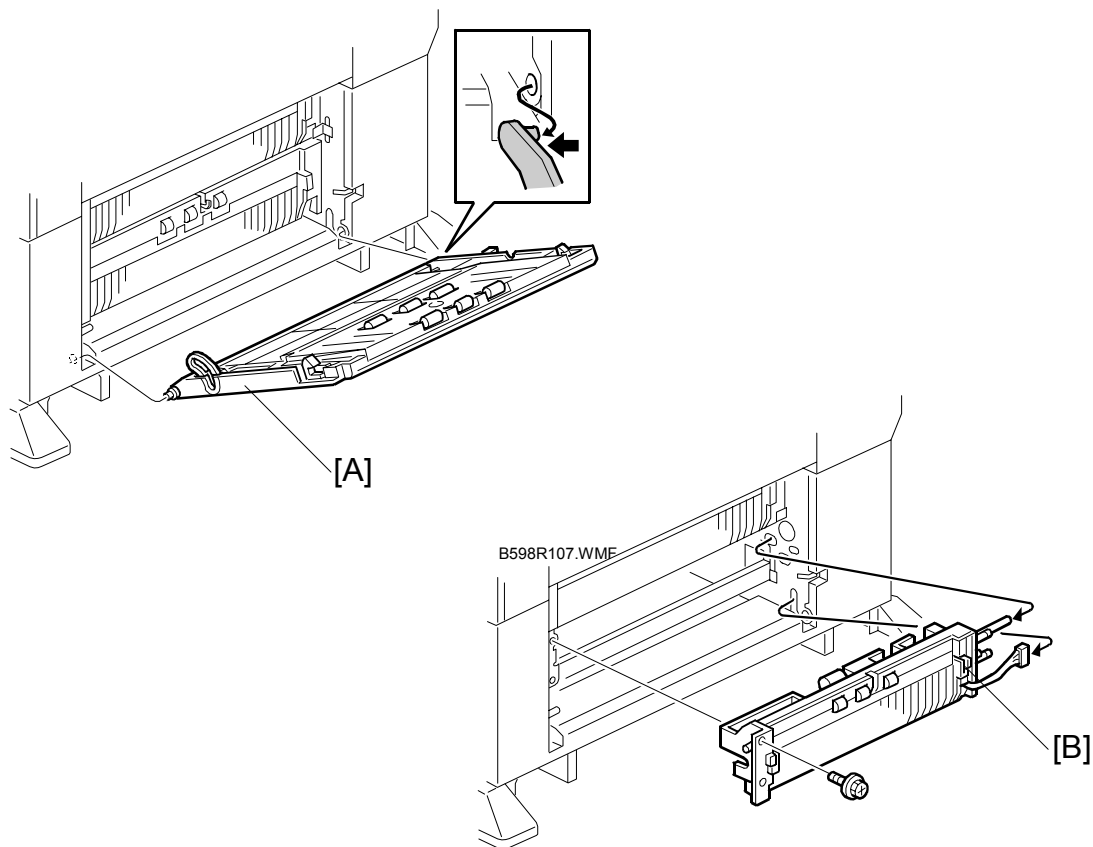
1.5 PAPER FEED CLUTCHES

1. Rear cover (🔩 1.1)
2. Paper feed clutches [A] (🔌 x 1, 1 bracket, 1 bushing)



B598R105.WMF

1.6 PAPER FEED UNIT REPLACEMENT

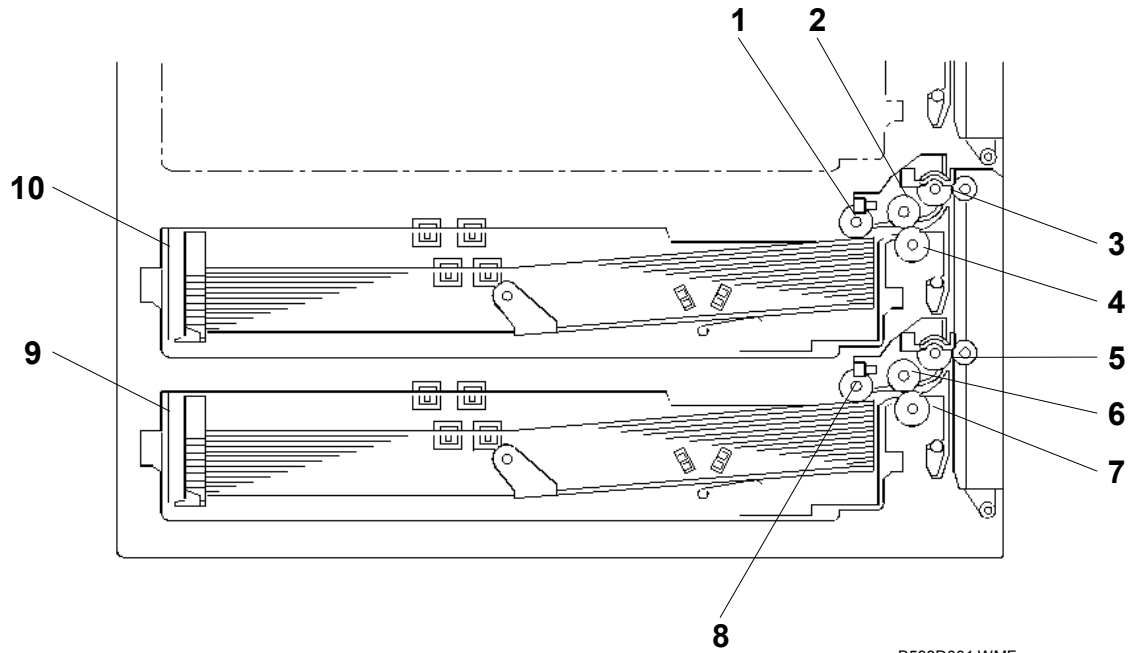


1. Vertical transport cover [A] (1 hook)
2. Paper feed unit [B] (⚙ x 2, 📄 x 1)

2. DETAILED DESCRIPTIONS

2.1 OVERVIEW

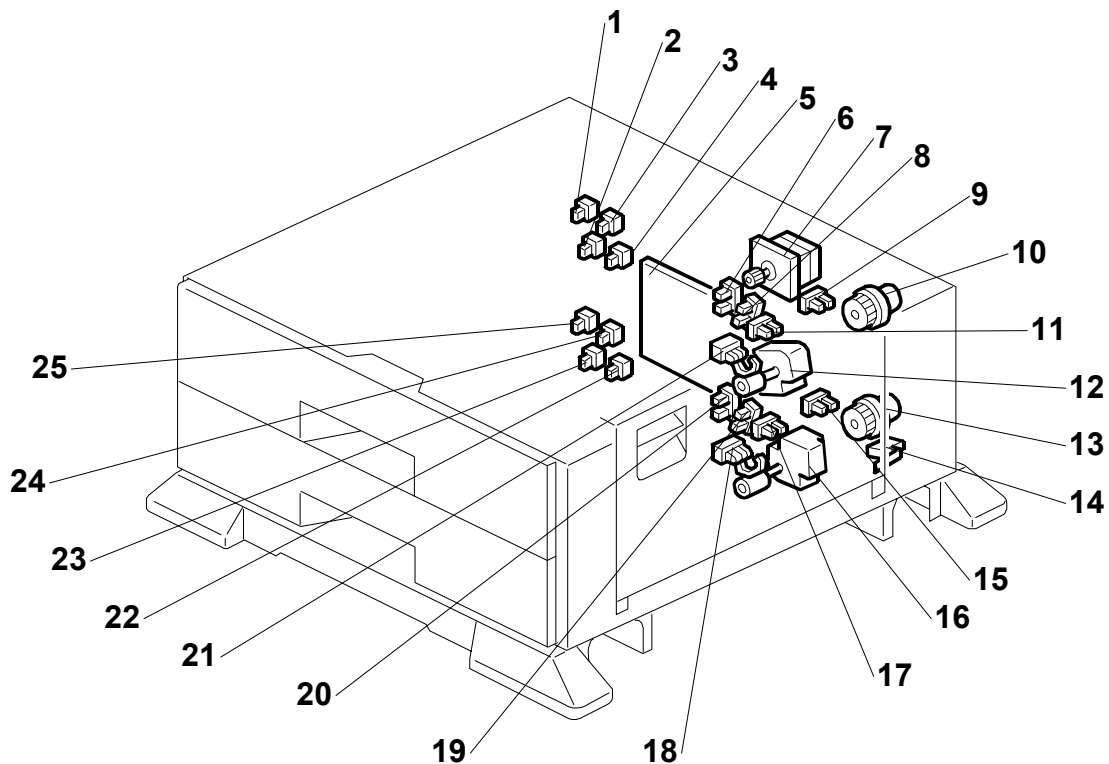
2.1.1 MECHANICAL COMPONENT LAYOUT



B598D001.WMF

- | | |
|----------------------------|----------------------------|
| 1. Upper Pick-up Roller | 6. Lower Paper Feed Roller |
| 2. Upper Paper Feed Roller | 7. Lower Separation Roller |
| 3. Upper Relay Roller | 8. Lower Pick-up Roller |
| 4. Upper Separation Roller | 9. Lower Tray |
| 5. Lower Relay Roller | 10. Upper Tray |

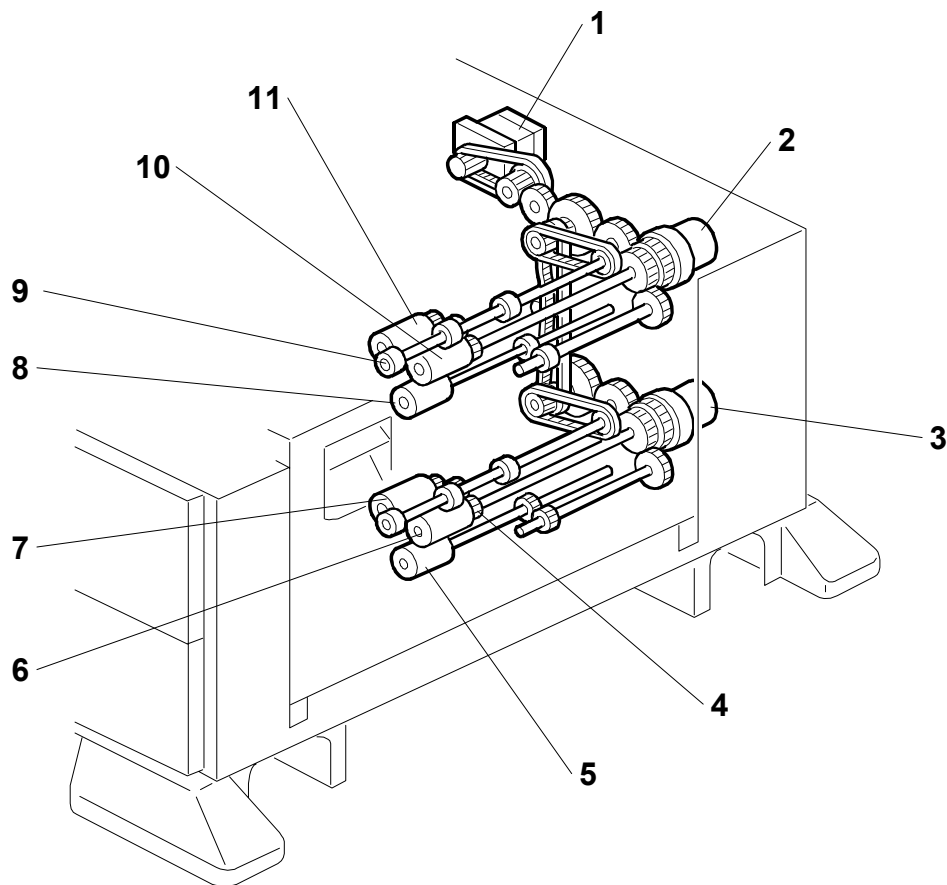
2.1.2 ELECTRICAL COMPONENT LAYOUT



B598D101.WMF

- | | |
|--------------------------------|---------------------------------|
| 1. Paper Size Switch 1 | 14. Vertical Guide Switch |
| 2. Paper Size Switch 2 | 15. Lower Lift Sensor |
| 3. Paper Size Switch 3 | 16. Lower Tray Lift Motor |
| 4. Paper Size Switch 4 | 17. Lower Paper End Sensor |
| 5. Main Board | 18. Lower Relay Sensor |
| 6. Upper Paper Height 1 Sensor | 19. Lower Paper Height 2 Sensor |
| 7. Paper Feed Motor | 20. Lower Paper Height 1 Sensor |
| 8. Upper Paper Height 2 Sensor | 21. Upper Relay Sensor |
| 9. Upper Lift Sensor | 22. Paper Size Switch 4 |
| 10. Upper Paper Feed Clutch | 23. Paper Size Switch 2 |
| 11. Upper Paper End Sensor | 24. Paper Size Switch 3 |
| 12. Upper Tray Lift Motor | 25. Paper Size Switch 1 |
| 13. Lower Paper Feed Clutch | |

2.1.3 DRIVE LAYOUT



B598D102.WMF

- | | |
|----------------------------|-----------------------------|
| 1. Tray Motor | 7. Lower Pick-up Roller |
| 2. Upper Paper Feed Clutch | 8. Upper Separation Roller |
| 3. Lower Paper Feed Clutch | 9. Upper Relay Roller |
| 4. Lower Relay Roller | 10. Upper Paper Feed Roller |
| 5. Lower Separation Roller | 11. Upper Pick-up Roller |
| 6. Lower Paper Feed Roller | |