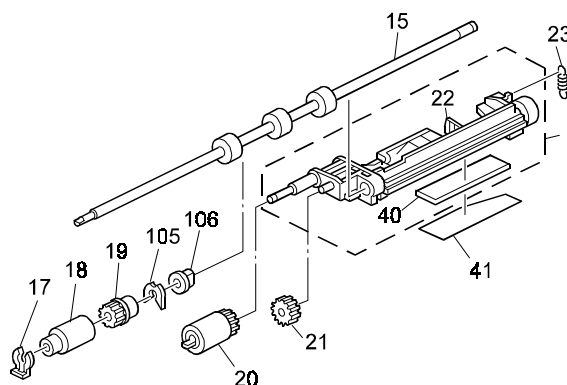


Model: Russian-C2 LCT		Date: 15-May-02	No.: MB391001
Modified Article: Psrts catalog correction		Prepared by: S. Tomoe	
From: Technical Services sec. Service Planning Dept.			
Reason for Modification:	<input checked="" type="checkbox"/> Parts catalog correction	<input type="checkbox"/> Vendor change	<input type="checkbox"/> To meet standards ()
	<input type="checkbox"/> To facilitate assembly	<input type="checkbox"/> To improve reliability	
	<input type="checkbox"/> Part standardization	<input type="checkbox"/> Other	

Please add the following part to your Parts Catalogs.

Old part number	New part number	Description	Q'ty	Int	Page	Index	Note
	A2322766	Feed Mylar	1		5	41	



Model: Russian-C2 LCT (PS500)		Date: 25-Jul-05	No.: MB391002
Modified Article: Psrts catalog correction		Prepared by: Y.Ohtani	
From: 1st Tech. Support Sec. Service Support Dept.			
Reason for Modification:	<input checked="" type="checkbox"/> Parts catalog correction	<input type="checkbox"/> Vendor change	<input type="checkbox"/> To meet standards ()
	<input type="checkbox"/> To facilitate assembly	<input type="checkbox"/> To improve reliability	
	<input type="checkbox"/> Part standardization	<input type="checkbox"/> Other	

Please add the following part to your Parts Catalogs.

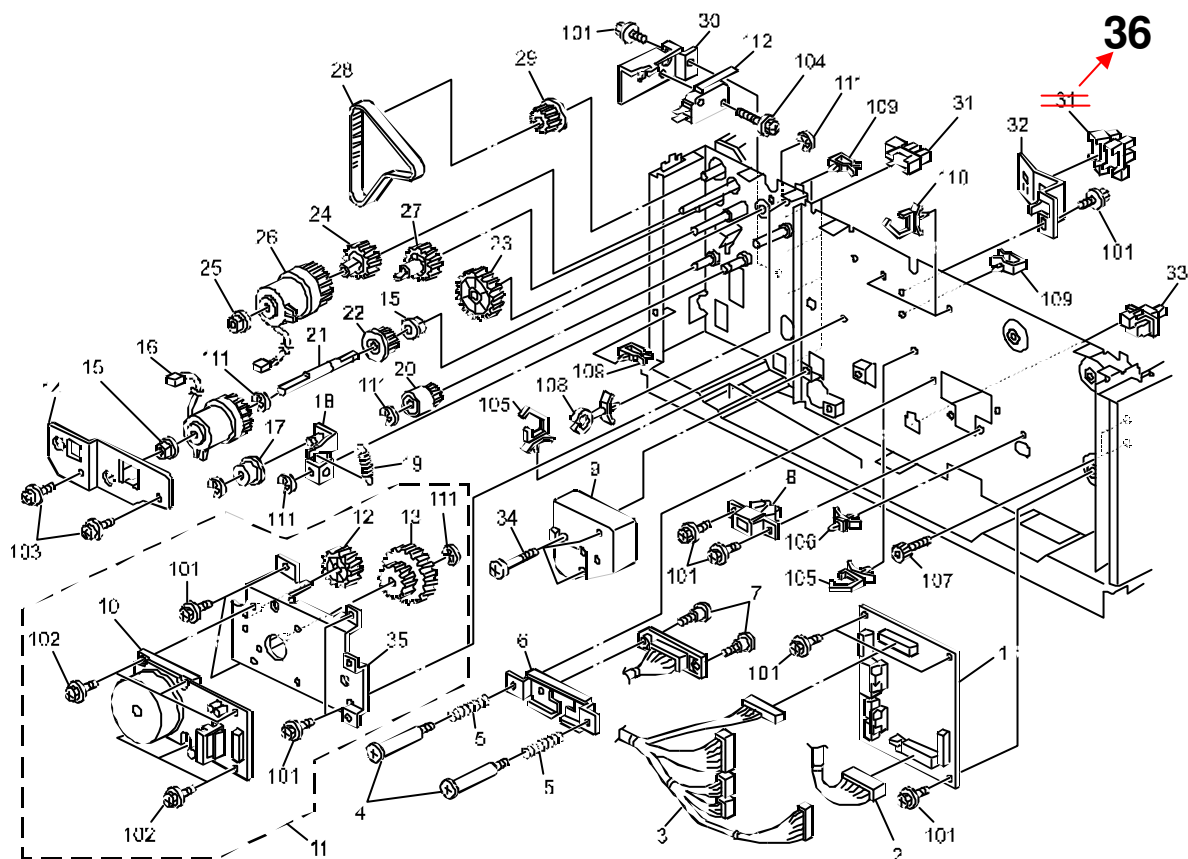
Old part number	New part number	Description	Q'ty	Int	Page	Index	Note
	B391 7351	Tray Heater – 230V	1		3	31	*

* This part is for the 230VAC model.

Model: Russian-C2 LCT (PS500)		Date: 11-Jan-07	No.: MB391003
Modified Article: Photointerruptor		Prepared by: S. Tomoe	
From: 1st Tech. Support Sec. Service Support Dept.			
Reason for Modification:	<input checked="" type="checkbox"/> Parts catalog correction <input type="checkbox"/> Vendor change <input type="checkbox"/> Other <input type="checkbox"/> To facilitate assembly <input type="checkbox"/> To improve reliability <input type="checkbox"/> To meet standards <input type="checkbox"/> Part standardization <input type="checkbox"/> Product Safety ()		

Old part number	New part number	Description	Q'ty	Int	Page	Index	Note
AW020160		Paper Feed Sensor	6-4		13	31	
	AW020156	Photointerruptor – EE-SX4235A -P2	0-2		13	36	

Change/Reason: The part number in the Parts Catalog was corrected.



Model: Russian-C2 LCT (PS500)		Date: 1-Feb-08	No.: MB391004
Modified Article: Photointerruptor		Prepared by: S. Tomoe	
From: 1st Tech. Support Sec. Service Support Dept.			
Reason for Modification:	<input checked="" type="checkbox"/> Parts catalog correction <input type="checkbox"/> Vendor change <input type="checkbox"/> Other <input type="checkbox"/> To facilitate assembly <input type="checkbox"/> To improve reliability <input type="checkbox"/> To meet standards <input type="checkbox"/> Part standardization <input type="checkbox"/> Product Safety ()		

Old part number	New part number	Description	Q'ty	Int	Page	Index	Note
AW020175		Photointerruptor – Paper Volume Sensor	2-0		11	14	
	AW020156	Photointerruptor – EE-SX4235A-P2	0-2		11	14	

Change/Reason: The part number in the Parts Catalog was corrected.



Part Change Information List

Date: September 30, 2009

Model	Code	PCIL Nr.	PCIL Correction	Old part number	New part number	Description	Old Q'ty	New Q'ty	Int	3DPC	Page	Index	Set	Set Int	RTB	Note	Ref. Nr.	ECN Nr.
R-C2 LCT (PS500)	B391	200909		AH012036	D3511120	CASTER:DIA50H59:STOPPER:YES	2	2	O/O		3	20			RB391001		V0901758	9051154
R-C2 LCT (PS500)	B391	200909		AH012037	D3511121	CASTER:DIA50H59:STOPPER:NO	2	2	O/O		3	36			RB391001		V0901758	9051154



Part Change Information List

Date: February 27, 2015

Model	Code	PCIL Number	PCIL Correction	Old part number	New part number	Description	Old Q'ty	New Q' ty	Int	3DPC	Page	Index	Set	Set Int	RTB	Note	Ref Number	ECN Number
R-C2 LCT (PS500)	B391	201502		B3912615	B3912616	DECAL:PAPER:SUPPLY	1	1	O/O		7	3					V1001812	10080225
R-C2 LCT (PS500)	B391	201502		B3912757	B3912616	DECAL:PAPER:SUPPLY	1	1	O/O		7	19					V1001812	10080225