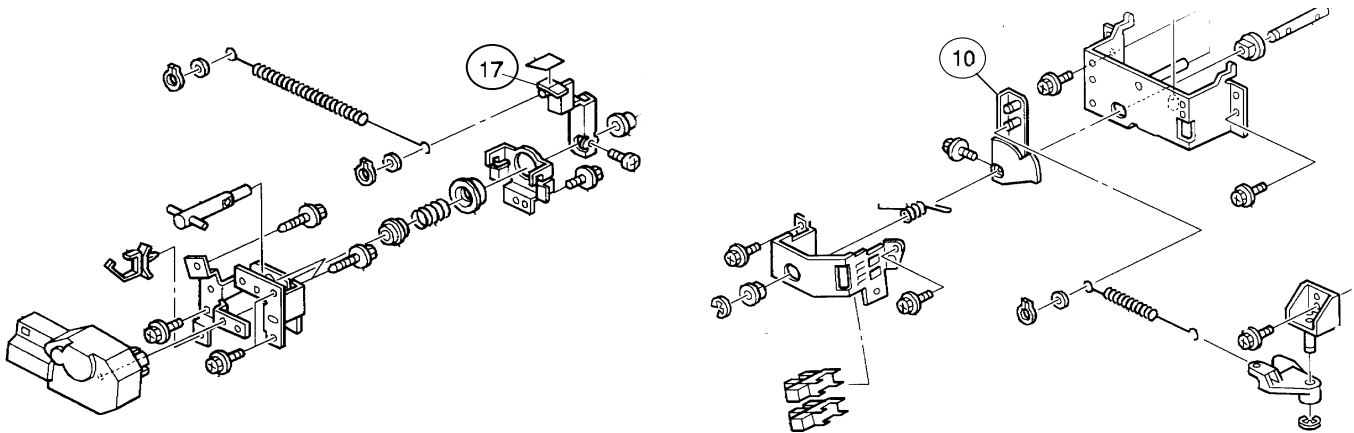


Model: Stinger-C1 Paper Tray Unit / 2 Trays (PS410)		Date: 15-Dec-99	No.: MA860001
Modified Article: Part number change		Prepared by: K. Miura	
From: Technical Services Dept., GTS Division			
Reason for Modification:	<input type="checkbox"/> Parts catalog correction	<input checked="" type="checkbox"/> Vendor change	<input type="checkbox"/> To meet standards ()
	<input type="checkbox"/> To facilitate assembly	<input type="checkbox"/> To improve reliability	
	<input type="checkbox"/> Part standardization	<input type="checkbox"/> Other	

The vendors for the following parts have been changed.

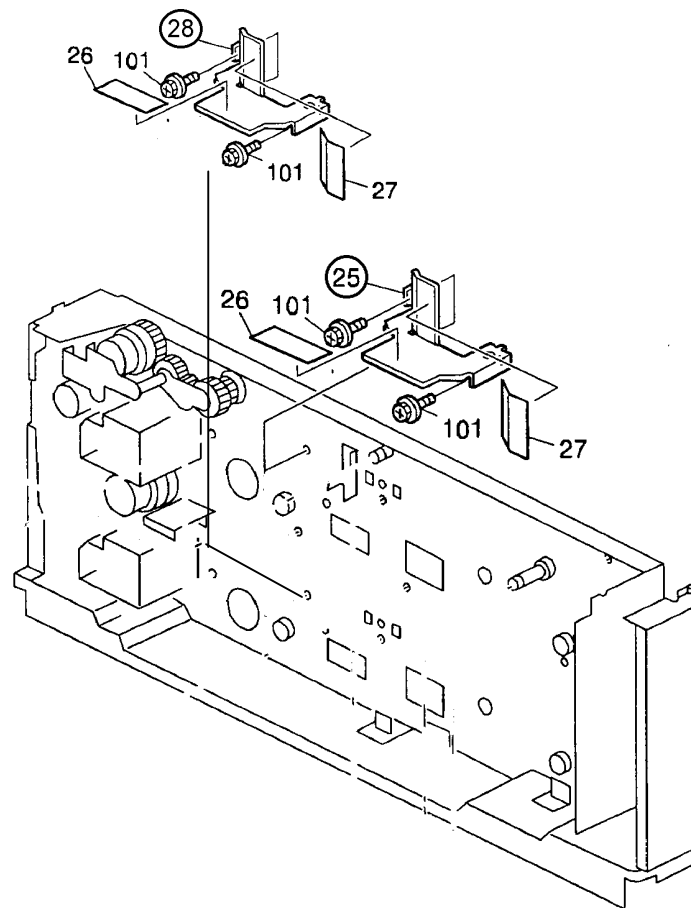
Old part number	New part number	Description	Q'ty	Int	Page	Index	Note
A2672823	A8602895	Lever – DC Motor	1	O/O	9	17	
A2672759	A8602893	Actuator – Paper Height Sensor	1	O/O	11	10	



Model: Stinger-C1 Paper Tray Unit/1Tray (PS410)		Date: 15-Dec-99	No.: MA860002
Modified Article: Spring Guard		Prepared by: K. Miura	
From: Technical Services Dept., GTS Division			
Reason for Modification:	<input type="checkbox"/> Parts catalog correction <input checked="" type="checkbox"/> To facilitate assembly <input type="checkbox"/> Part standardization	<input type="checkbox"/> Vendor change <input type="checkbox"/> To improve reliability <input type="checkbox"/> Other	<input type="checkbox"/> To meet standards ()

Old part number	New part number	Description	Q'ty	Int	Page	Index	Note
A8601190	A8601190	Guard: Spring: Paper Bank	2-1		11	25	
	A8601191	Spring Guard – Lower	1	O/O	11	28	

The shape of the spring guard has been modified to facilitate removal.



Model: Stinger-C1 Paper Tray Unit/1Tray (PS410)

Date: 15-Dec-99

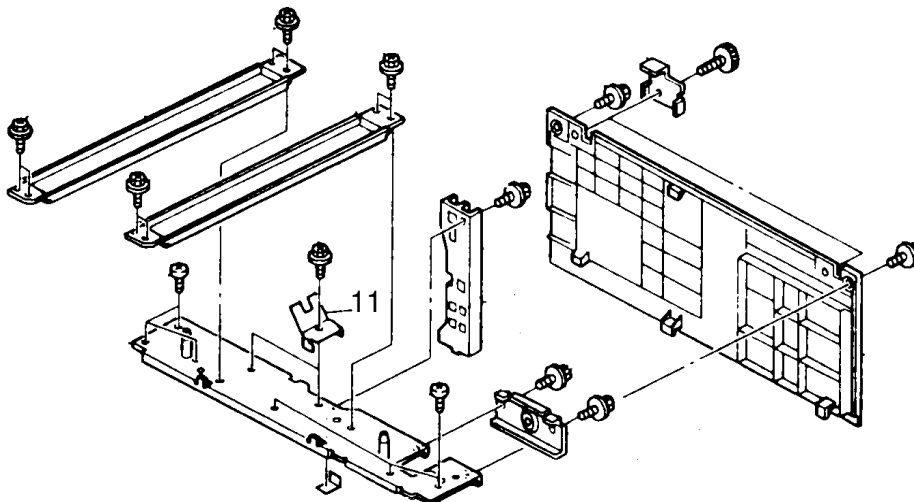
No.: MA860002

MODEL NAME	DESTINATION		JAPAN PRODUCTION
		CODE	SERIAL NO.
PS410	All RICOH subsidiaries, NRG, SAVIN	A860-17	H1591000139
PS410	Infotec	A860-26	3U71190001
PS410	Lanier	A860-55	L050911xxxx

Model: Stinger-C1 Paper Tray Unit/2Trays (PS410)		Date: 23-Mar-00	No.: MA860003
Modified Article: Mylar added to plate springs		Prepared by: K. Miura	
From: Technical Services Dept., GTS Division			
Reason for Modification:	<input type="checkbox"/> Parts catalog correction <input type="checkbox"/> To facilitate assembly <input type="checkbox"/> Part standardization	<input type="checkbox"/> Vendor change <input type="checkbox"/> To improve reliability <input checked="" type="checkbox"/> Other	<input type="checkbox"/> To meet standards ()

For increased safety, a mylar strip has been added to both plate springs located in between the paper feed unit and mainframe.

Old part number	New part number	Description	Q'ty	Int	Page	Index	Note
H5194547	A8601140	Spring Plate	2	X/O	3	11	

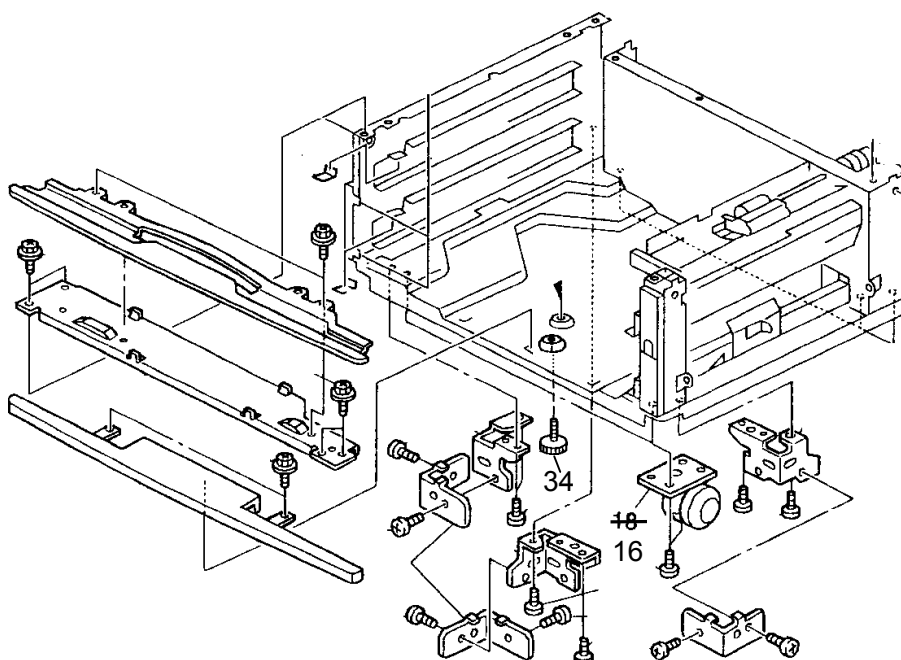


MODEL NAME	DESTINATION	JAPAN PRODUCTION	
		CODE	SERIAL NO.
PS410	All RICOH subsidiaries, NRG, SAVIN	A860-17	H1500200001
PS410	Infotec	A860-26	3U70200001
PS410	Lanier	A860-55	L050002xxxx

Model: Stinger-C1 Paper Tray Unit/2 Trays (PS410)		Date: 14-Jun-00	No.: MA860004
Modified Article: Adjusting pin added		Prepared by: K. Miura	
From: Technical Services Dept., GTS Division			
Reason for Modification:	<input type="checkbox"/> Parts catalog correction	<input type="checkbox"/> Vendor change	<input type="checkbox"/> To meet standards ()
	<input type="checkbox"/> To facilitate assembly	<input type="checkbox"/> To improve reliability	
	<input type="checkbox"/> Part standardization	<input checked="" type="checkbox"/> Other	

An adjusting pin has been added to the Paper Tray Unit to make it easier to secure the unit in place. This will function in place of the Paper Tray Unit caster locks.

Old part number	New part number	Description	Q'ty	Int	Page	Index	Note
AH012025	AH012026	Caster	2-4	X/O	3	18-16	
	A8601125	Adjusting Pin	1		3	34	



RCL (Japan) Production

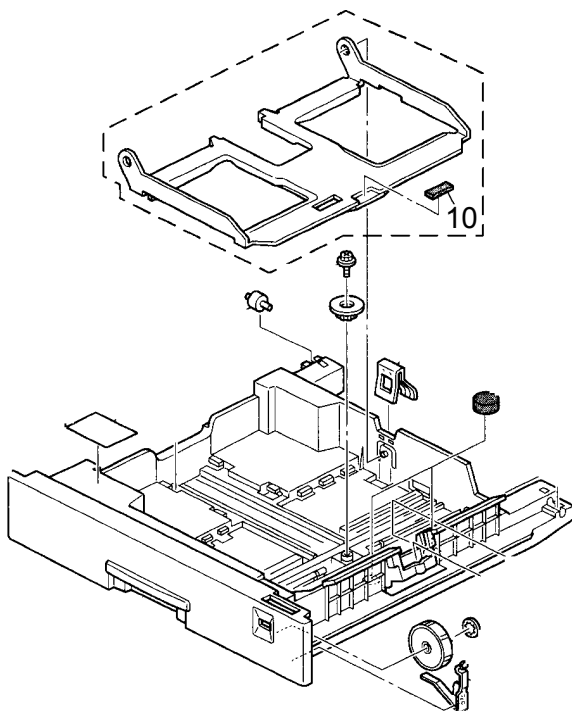
MODEL NAME	DESTINATION	CODE	SERIAL NO.
PS410	All RICOH subsidiaries, NRG, SAVIN	A860-17	H1590700001
PS410	Infotec	A860-26	3U70790001
PS410	Lanier	A860-55	L0509070032

Model: Stinger-C1 Paper Tray Unit/2 Tray (PS410)		Date: 03-Oct-00	No.: MA860005
Modified Article: Bottom plate pad modification - OHP transparency feed			Prepared by: K. Miura
From: Technical Services Dept., GTS Division			
Reason for Modification:	<input type="checkbox"/> Parts catalog correction <input type="checkbox"/> To facilitate assembly <input type="checkbox"/> Part standardization	<input type="checkbox"/> Vendor change <input checked="" type="checkbox"/> To improve reliability <input type="checkbox"/> Other	<input type="checkbox"/> To meet standards ()

In order to ensure proper feed of OHP transparencies, a material with a lower rubber content is now used for the bottom plate pad. This material has a lower coefficient of friction and is effective against the following OHP feed symptoms.

- Last sheet non-feed (jam display)
- Skewing
- Noise

Old part number	New part number	Description	Q'ty	Int	Page	Index	Note
G0292608	52152713	Bottom Plate Pad	1	X/O	5	10	



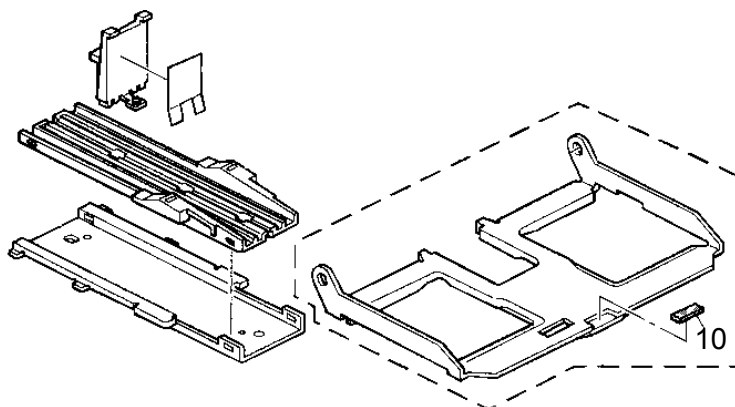
RCL (Japan) Production

MODEL NAME	DESTINATION	CODE	SERIAL NO.
PS410	All RICOH subsidiaries, NRG, SAVIN	A860-17	H1590900001
PS410	Infotec	A860-26	3U709900001
PS410	Lanier	A860-55	L05090900001

Model: Stinger-C1 Paper Tray Unit / 2 Tray (PS410)		Date: 12-Oct-00	No.: MA860006
Modified Article: Base Pad		Prepared by: K. Miura	
From: Technical Services Dept., GTS Division			
Reason for Modification:	<input type="checkbox"/> Parts catalog correction	<input type="checkbox"/> Vendor change	<input type="checkbox"/> To meet standards ()
	<input type="checkbox"/> To facilitate assembly	<input type="checkbox"/> To improve reliability	
	<input type="checkbox"/> Part standardization	<input checked="" type="checkbox"/> Other	

Due to the measurement specifications of the bottom plate pad, it is possible for the pad to be wider than the opening in the bottom plate. To ensure that the pad will fit in the opening, the base pad for the Russian will be used.

Old part number	New part number	Description	Q'ty	Int	Page	Index	Note
52152713		Bottom Plate Pad	1	O/O	5	10	
	A2672917	Base Pad	1	O/O	5	10	



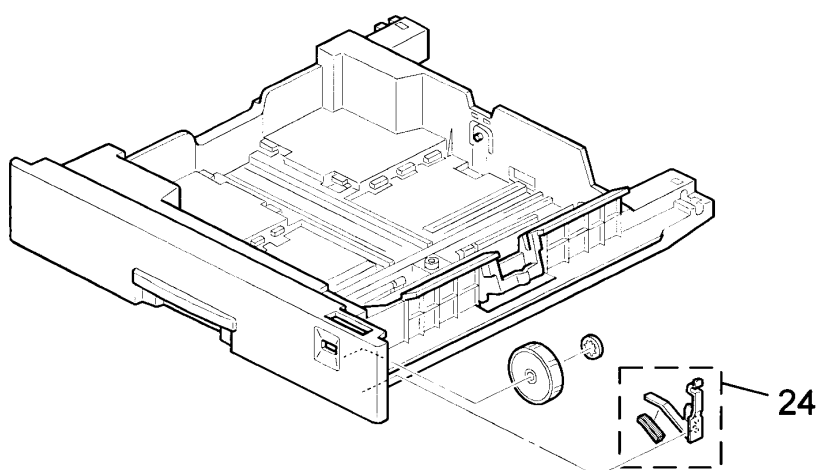
RCL (Japan) Production

MODEL NAME	DESTINATION	CODE	SERIAL NO.
PS410	All RICOH subsidiaries, NRG, SAVIN	A860-17	H1591200001
PS410	Infotec	A860-26	3U71290001
PS410	Lanier	A860-55	L0500080001

Model: Stinger-C1 Paper Tray Unit/2Tray (PS410)		Date: 26-Feb-01	No.: MA860007
Modified Article: Spring Plate		Prepared by: K. Miura	
From: Technical Services Dept., GTS Division			
Reason for Modification:	<input type="checkbox"/> Parts catalog correction <input type="checkbox"/> To facilitate assembly <input type="checkbox"/> Part standardization	<input type="checkbox"/> Vendor change <input type="checkbox"/> To improve reliability <input checked="" type="checkbox"/> Other	<input type="checkbox"/> To meet standards ()

The edge of the spring pate for the paper size dial is relatively sharp. To ensure proper safety, a sponge has been added to the plate.

Old part number	New part number	Description	Q'ty	Int	Page	Index	Note
A2672868	A2672870	Sponge – Spring Plate	1	X/O	5	24	



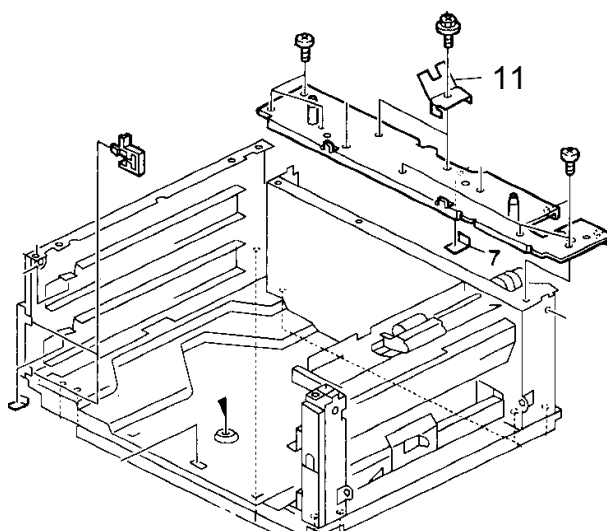
RCL (Japan) Production

MODEL NAME	DESTINATION	CODE	SERIAL NO.
PS410	All RICOH subsidiaries, NRG, SAVIN	A860-17	H1501200001
PS410	Infotec	A860-26	3U7011xxxx
PS410	Lanier	A860-55	L050101xxxx

Model: Stinger-C1 Paper Tray Unit/2Trays (PS410)		Date: 13-Apr-01	No.: MA860008
Modified Article: Spring Plate		Prepared by: K. Miura	
From: Technical Services Dept., GTS Division			
Reason for Modification:	<input type="checkbox"/> Parts catalog correction <input type="checkbox"/> To facilitate assembly <input type="checkbox"/> Part standardization	<input type="checkbox"/> Vendor change <input type="checkbox"/> To improve reliability <input checked="" type="checkbox"/> Other	<input type="checkbox"/> To meet standards ()

Although previously, a mylar was added to the spring plate to protect it from damage (MB #MA861003), the shape of the spring plate itself has now been modified to perform the same function.

Old part number	New part number	Description	Q'ty	Int	Page	Index	Note
A8601140	B3841146	Spring Plate	2	X/O	3	11	



RCL (Japan) Production

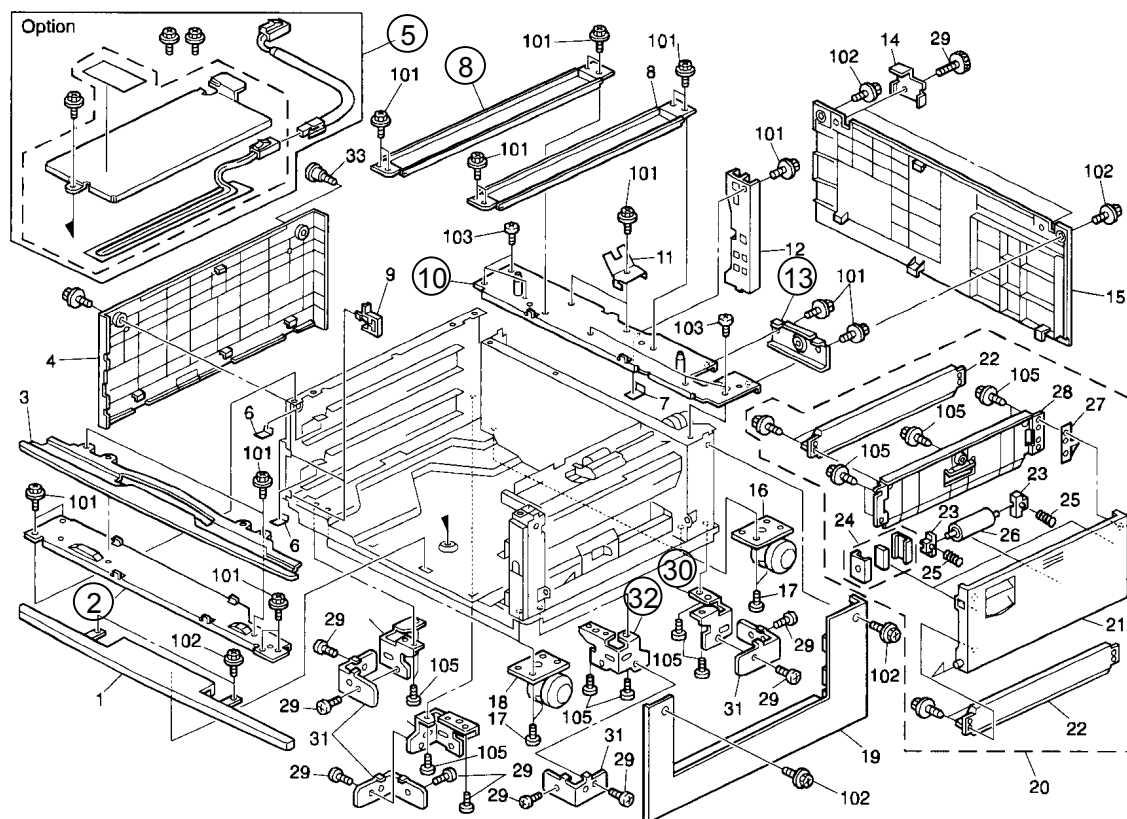
MODEL NAME	DESTINATION	CODE	SERIAL NO.
PS410	All RICOH subsidiaries, NRG, SAVIN	A860-17	H1510300001
PS410	Infotec	A860-26	3U70310001
PS410	Lanier	A860-55	L050104XXXX

Model: Stinger-C1 Paper Tray Unit / 2 Trays (PS410)		Date: 10-Oct-01	No.: MA860010
Modified Article: Bracket Material Change		Prepared by: K. Miura	
From: Technical Services Dept., GTS Division			
Reason for Modification:	<input type="checkbox"/> Parts catalog correction <input type="checkbox"/> To facilitate assembly <input type="checkbox"/> Part standardization	<input type="checkbox"/> Vendor change <input type="checkbox"/> To improve reliability <input checked="" type="checkbox"/> Other	<input type="checkbox"/> To meet standards ()

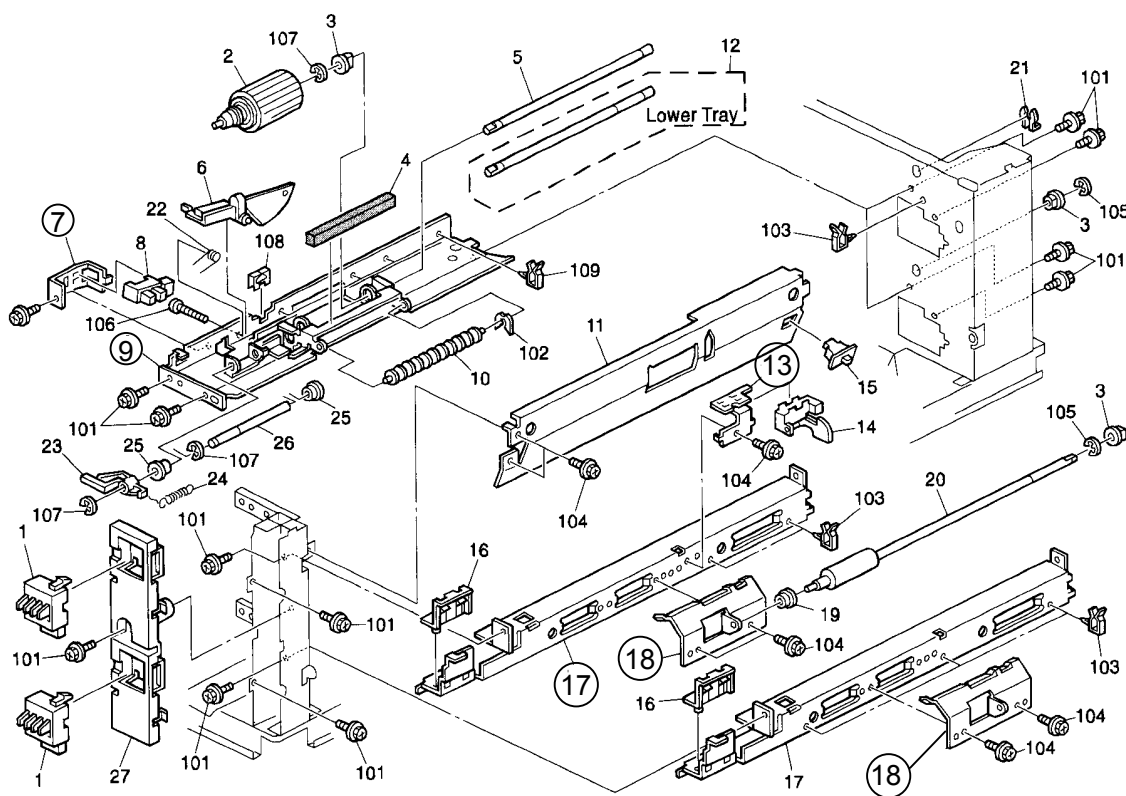
A material change has been applied to the following brackets and bracket portions of the following components.

Old part number	New part number	Description	Q'ty	Int	Page	Index	Note
A8601110	B3841110	Upper Front Stay	1	O/O	3	2	
A8601114	B3841114	Upper Rear Stay	1	O/O	3	10	
A8601117	B3841117	Bracket - Upper Rear Stay	1	O/O	3	13	
A8601120	B3841120	Upper Left Stay	2	O/O	3	8	
A8606260	B3846260	Unit Holder Bracket - LF/RR	2	O/O	3	30	
A8606270	B3846270	Unit Holder Bracket - RF/LR	2	O/O	3	32	
A8606300	B3846300	Tray Heater	1	O/O	3	5	
A2672660	B0242660	Vertical Sensor Bracket	1	O/O	7	13	
A2672805	B0242805	Bracket - Paper End Sensor	2	O/O	7	7	
A2672842	B0242842	Bracket - Friction Pad Guide	2	O/O	7	18	
A8601090	B3841090	Right Guide Rail	2	O/O	7	17	
A8602555	B3842555	Feed Roller Bracket	2	O/O	7	9	
A2672908	B0242908	Tray Holder Bracket	2	O/O	9	12	
A8601161	B3841161	Interface Board Bracket	1	O/O	9	18	
A8602709	B3842709	Upper Lever - Lift Motor	1	O/O	9	3	
A8602720	B3842720	Main Bracket - Lift Motor	1	O/O	9	15	
A8602726	B3842726	Lift Motor Bracket	2	O/O	9	10	
A8602728	B3842728	Spring Holder Bracket	2	O/O	9	5	
A8602895	B3842895	Lower Lever - Lift Motor	1	O/O	9	17	
A2672765	B0242765	Pressure Lever Stopper	1	O/O	11	4	
A2672773	B0242773	Lift Sensor Bracket	1	O/O	11	12	
A2672781	B0242781	Pressure Lever Bracket	2	O/O	11	17	
A2672815	B0242815	Main Bracket - Pressure Lever	1	O/O	11	9	
A8601190	B3841190	Upper Spring Guard	1	O/O	11	25	
A8601191	B3841191	Lower Spring Guard	1	O/O	11	28	
A8602810	B3842810	Main Motor Bracket	1	O/O	11	22	
A8602821	B3842821	Timing Belt Tensioner	1	O/O	11	1	
A8602893	B3842893	Actuator - Paper Height Sensor	2	O/O	11	10	
A2672602	B0242602	Timing Belt Tensioner	1	O/O	13	5	
A8602840	B3842840	Bracket - Paper Feed Clutch	1	O/O	13	1	
A8602850	B3842850	Lower Bracket - Paper Feed	1	O/O	13	19	
A8602860	B3842860	Upper Bracket - Paper Feed	1	O/O	13	18	

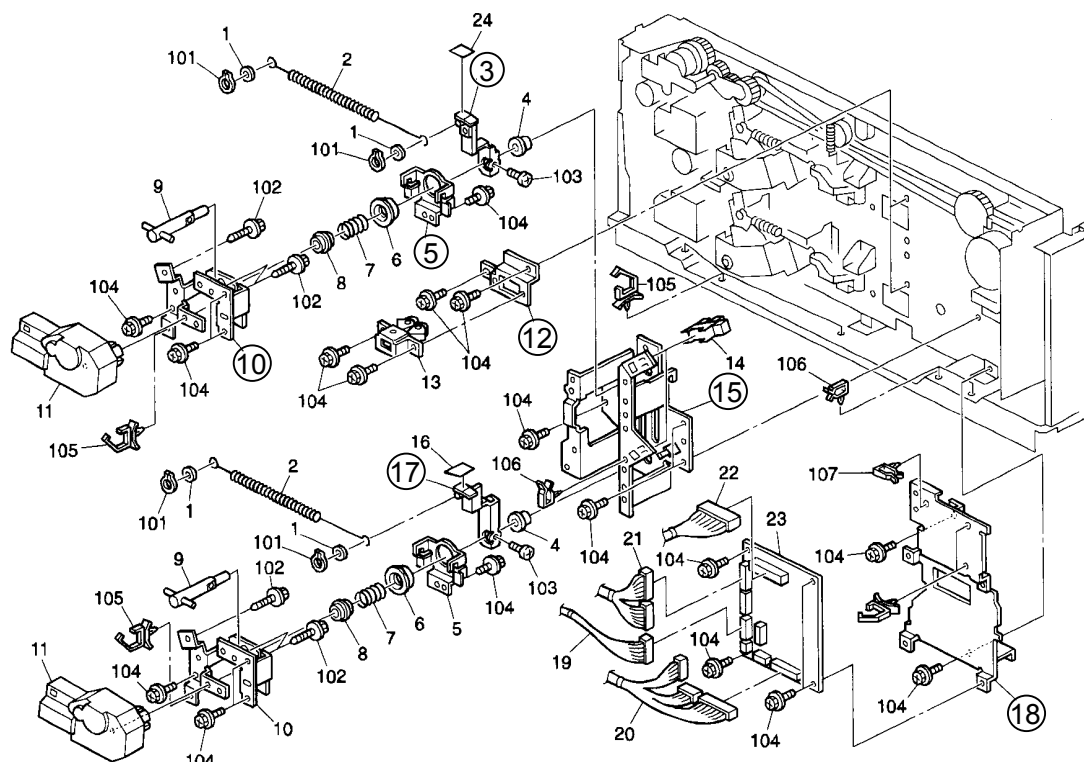
Page 3



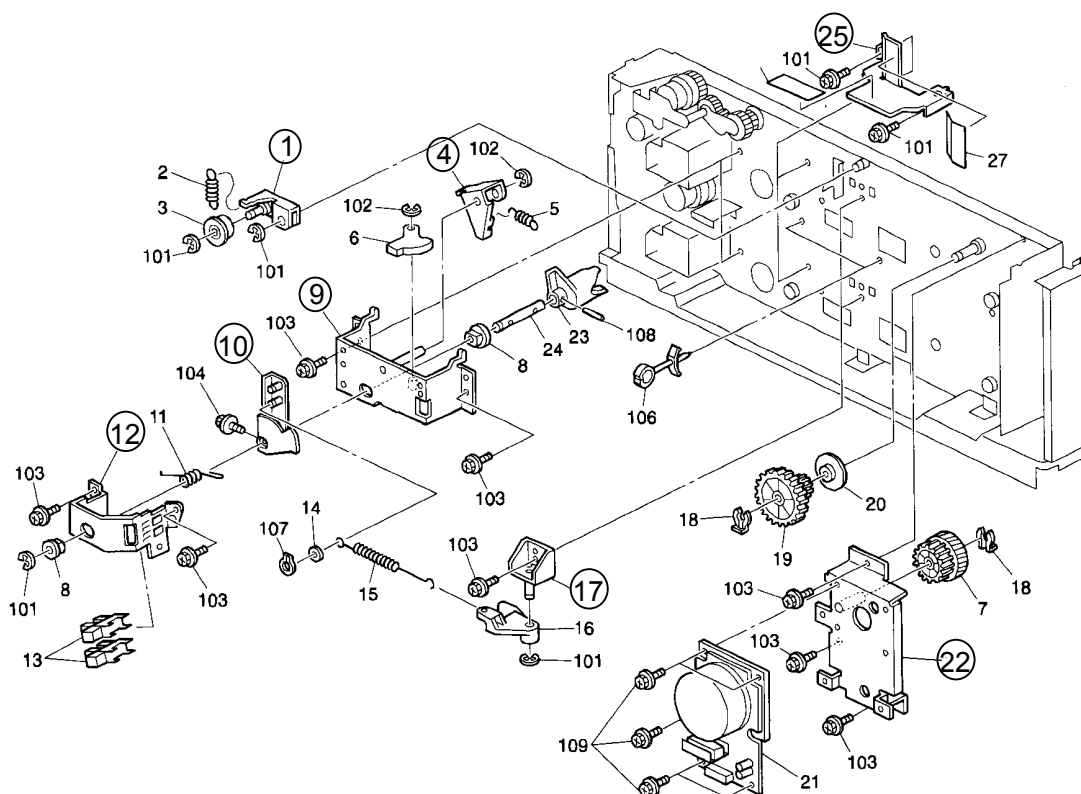
Page 7



Page 9

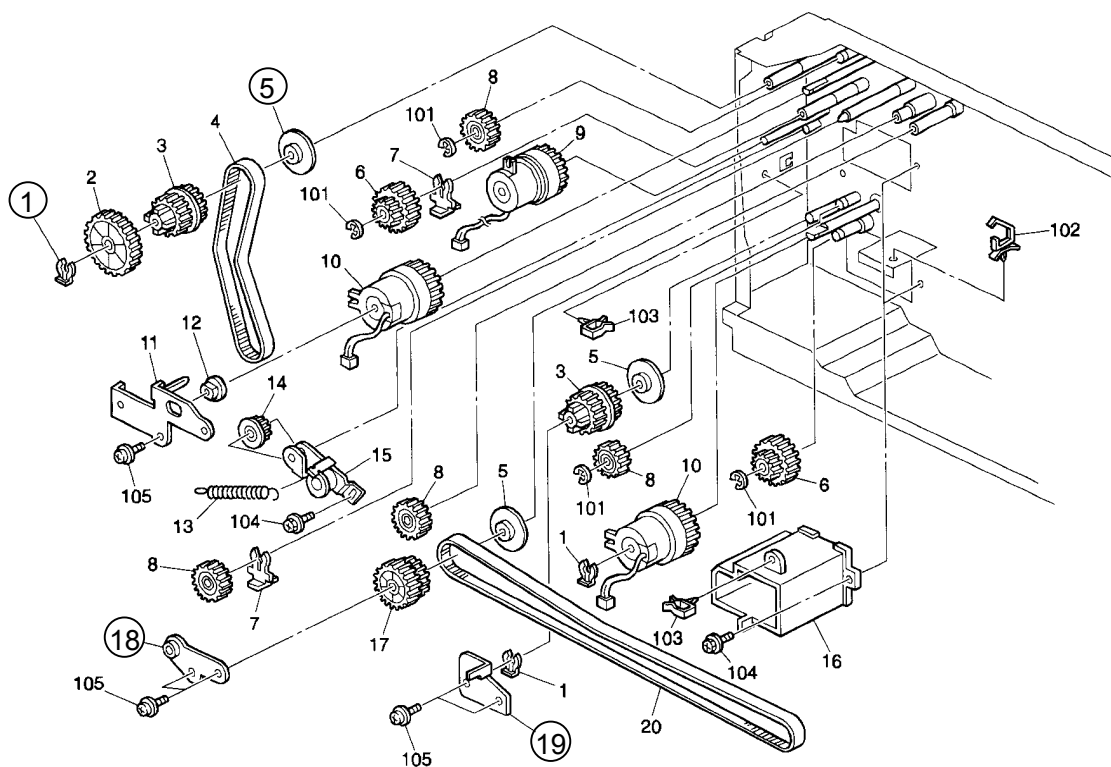


Page 11



Model: Stinger-C1 Paper Tray Unit / 2 Trays (PS410)	Date: 10-Oct-01	No.: MA860010
---	-----------------	---------------

Page 13



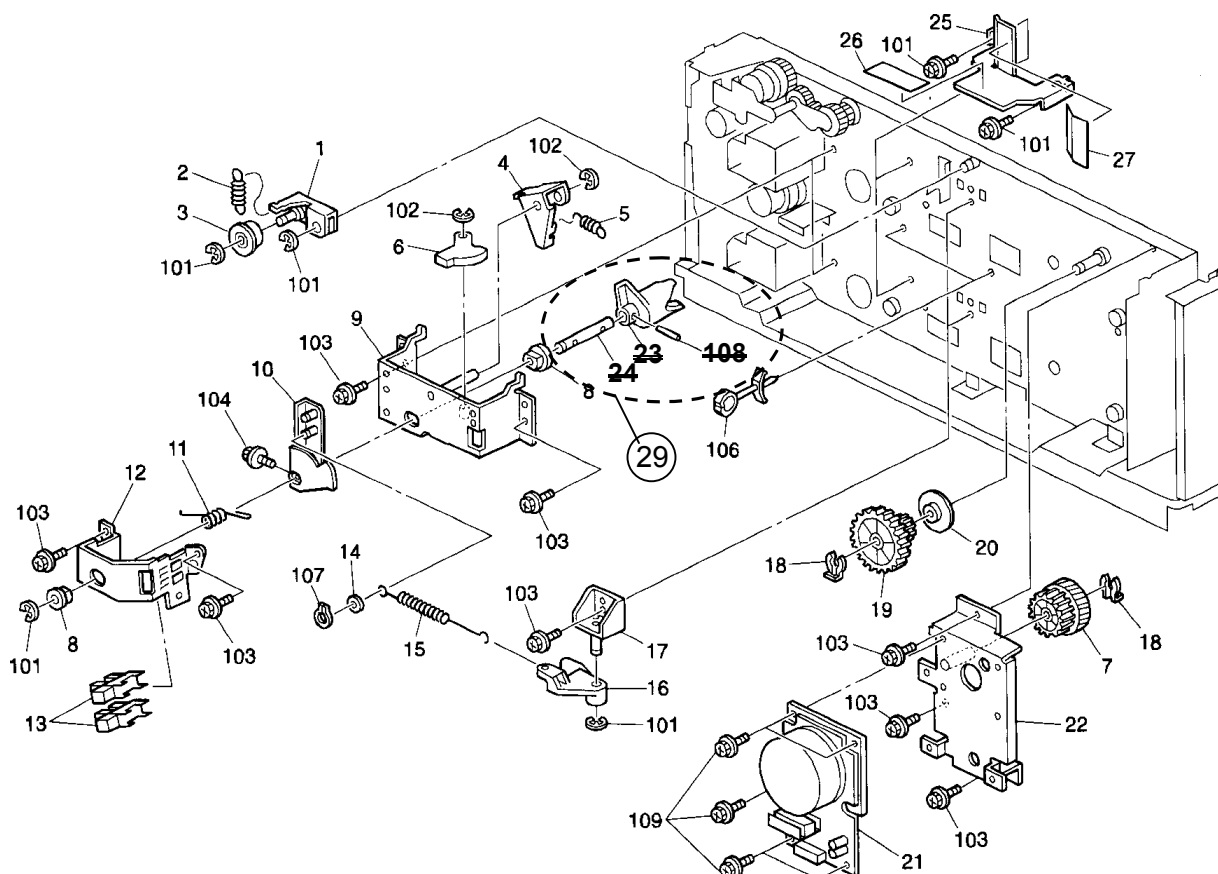
RCL (Japan) Production

MODEL NAME	DESTINATION	CODE	SERIAL NO.
PS410	All RICOH subsidiaries, NRG, SAVIN	A860-17	H1510500001
PS410	Infotec	A860-26	3U7061xxxx
PS410	Lanier	A860-55	L050106xxxx

Model: Stinger-C1 Paper Tray Unit/2Trays (PS410)		Date: 10-Oct-01	No.: MA860011
Modified Article: Parts Catalog Correction		Prepared by: K. Miura	
From: Technical Services Dept., GTS Division			
Reason for Modification:	<input checked="" type="checkbox"/> Parts catalog correction <input type="checkbox"/> To facilitate assembly <input type="checkbox"/> Part standardization	<input type="checkbox"/> Vendor change <input type="checkbox"/> To improve reliability <input type="checkbox"/> Other	<input type="checkbox"/> To meet standards ()

Please correct your Part Catalog as follows:

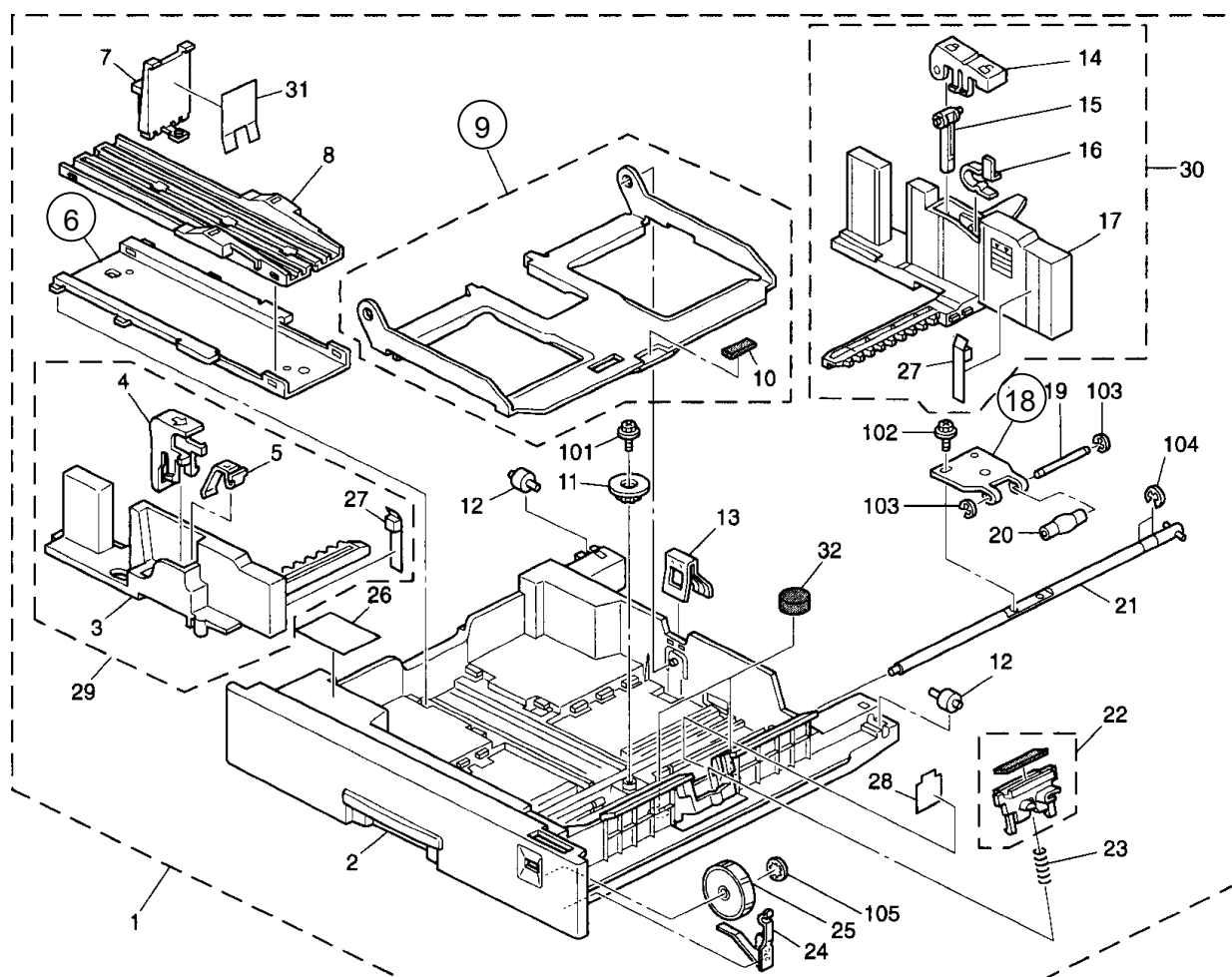
Old part number	New part number	Description	Q'ty	Page	Index	Note
A2672761		Joint – Shaft	1	11	23	
A2672762		Shaft	1	11	24	
06230140E		Spring Pin – 3x14mm	1	11	108	
	A2672756	Joint - Shaft	1	11	29	



Model: Stinger-C1 Paper Tray Unit / 2Trays (PS410)		Date: 10-Oct-01	No.: MA860012
Modified Article: Paper Feed Unit		Prepared by: K. Miura	
From: Technical Services Dept., GTS Division			
Reason for Modification:	<input type="checkbox"/> Parts catalog correction	<input type="checkbox"/> Vendor change	<input type="checkbox"/> To meet standards ()
	<input type="checkbox"/> To facilitate assembly	<input type="checkbox"/> To improve reliability	
	<input type="checkbox"/> Part standardization	<input checked="" type="checkbox"/> Other	

A material change has been applied to the following brackets and bracket portions of the following components.

Old part number	New part number	Description	Q'ty	Int	Page	Index	Note
A2672874	B0242874	Base Slider	1	O/O	5	6	
A2672861	B0242861	Bottom Plate	1	O/O	5	9	
A2672856	B0242856	Bracket - Rising	1	O/O	5	18	



Reissued: 31-Oct-01

Model: Stinger-C1 (PS410) / Russian-C1 (PS440)	Date: 26-Oct-01	No.: MA860013a
--	-----------------	----------------

MB Correction

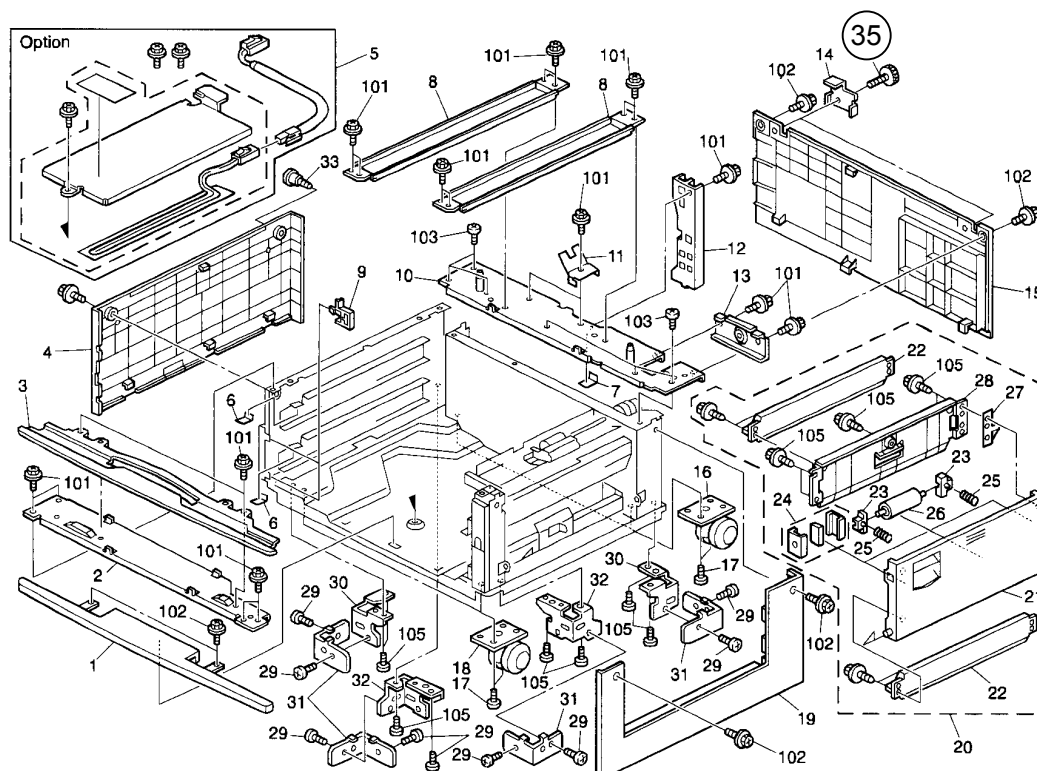
The following MB is Stinger- C1 Only

Modified Article: Rear Cover Screw		Prepared by: K. Miura	
From: Technical Services Dept., GTS Division			
Reason for Modification:	<input type="checkbox"/> Parts catalog correction	<input type="checkbox"/> Vendor change	<input type="checkbox"/> To meet standards ()
	<input type="checkbox"/> To facilitate assembly	<input checked="" type="checkbox"/> To improve reliability	
	<input type="checkbox"/> Part standardization	<input type="checkbox"/> Other	

To maximize the Rear Cover's resistance to warping under high temperatures (over 60°C), the M4x10 Flat Knob Screw for the cover has been changed to an M4x11 screw in the **two areas** shown below (index 35).

Note: Since the M4x10 screw (index 29) is still being used in the remaining areas, its service parts quantity has been changed from 10 to 8 with no P/N change.

Old part number	New part number	Description	Q'ty	Int	Page	Index	Note
AA143508	AA143508	Flat Knob Screw – M4x10	10-8		3	29	
	AA143775	Screw: M4x11	2	X/O	3	35	



RCL (Japan) Production

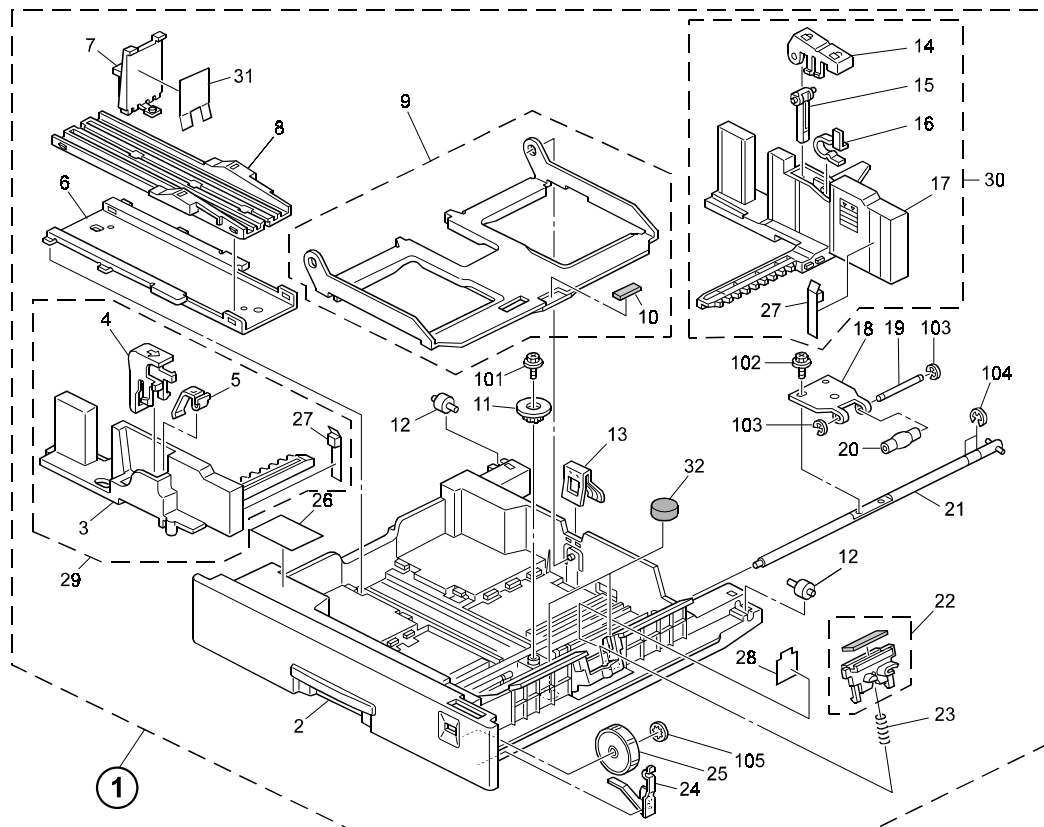
MODEL NAME	DESTINATION	CODE	SERIAL NO.
PS410	All RICOH subsidiaries, NRG, SAVIN	A860-17	H1510300001
PS410	Infotec	A860-26	3U70310001
PS410	Lanier	A860-55	L050103xxxx

Model: Stinger-C1 (PS410)/Russian-C1 (PS440)		Date: 19-Jul-02	No.: MA860014
Modified Article: Paper Tray Assembly		Prepared by: K. Miura	
From: Technical Services sec. Service Planning Dept.			
Reason for Modification:	<input type="checkbox"/> Parts catalog correction <input type="checkbox"/> To facilitate assembly <input type="checkbox"/> Part standardization	<input type="checkbox"/> Vendor change <input checked="" type="checkbox"/> To improve reliability <input type="checkbox"/> Other	<input type="checkbox"/> To meet standards ()

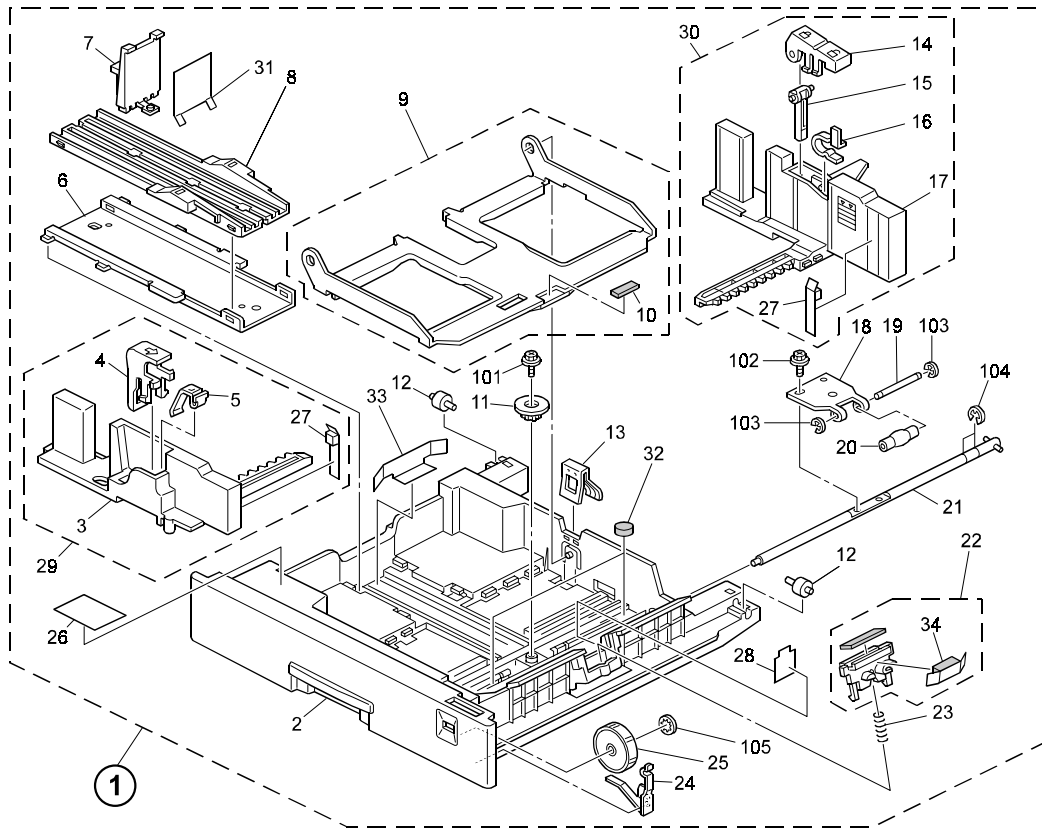
The following has been changed to ensure that the Paper Tray can be inserted and pulled out more smoothly.

Old part number	New part number	Description	Q'ty	Int	Page	Index	Note
A8607341	A8607342	Paper Tray Assembly	1	O/O	5	1	

< Stinger-C >



< Russian-C1 >



Model: Stinger-C1 (PS410)/Russian-C1 (PS440)		Date: 27-Dec-02	No.: MA860015
Modified Article: Transport Motor		Prepared by: K. Miura	
From: Technical Services Sec. Service Planning Dept.			
Reason for Modification:	<input type="checkbox"/> Parts catalog correction <input type="checkbox"/> To facilitate assembly <input checked="" type="checkbox"/> Part standardization	<input type="checkbox"/> Vendor change <input type="checkbox"/> To improve reliability <input type="checkbox"/> Other	<input type="checkbox"/> To meet standards ()

The following part has been changed due to parts standardization with future models.

Old part number	New part number	Description	Q'ty	Int	Page	Index	Note
AX060184		DC Motor - 11.3W	1		11	21	
	AX050196	DC Motor - 8.5W	1	O/O	11	21	

Note: This modification applies to models A860-17, A860-26, and A860-55.

