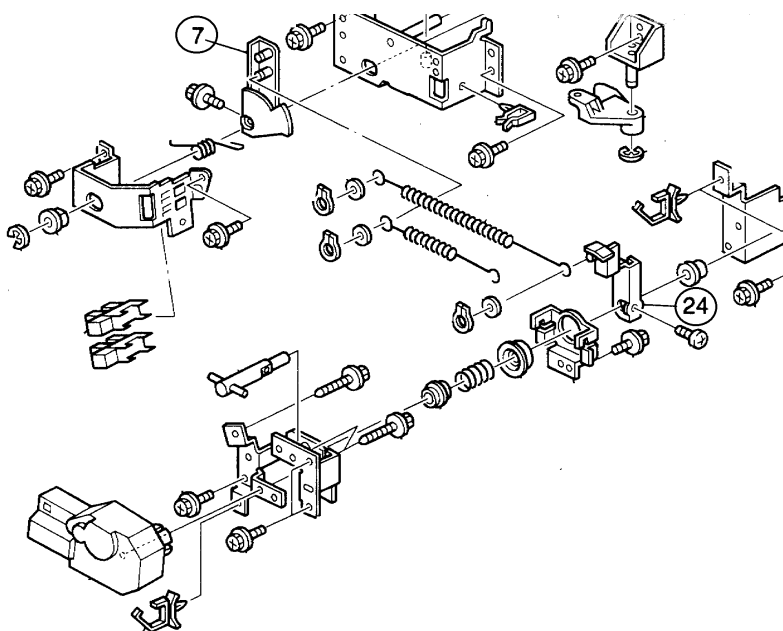


Model: Stinger-C1 Paper Tray Unit / 1 Tray (PS400)		Date: 15-Dec-99	No.: MA861001
Modified Article: Part number change		Prepared by: K. Miura	
From: Technical Services Dept., GTS Division			
Reason for Modification:	<input type="checkbox"/> Parts catalog correction <input type="checkbox"/> To facilitate assembly <input type="checkbox"/> Part standardization	<input checked="" type="checkbox"/> Vendor change <input type="checkbox"/> To improve reliability <input type="checkbox"/> Other	<input type="checkbox"/> To meet standards (      )

The vendors for the following parts have been changed.

Old part number	New part number	Description	Q'ty	Int	Page	Index	Note
A2672823	A8602895	Lever – DC Motor	1	O/O	9	24	
A2672759	A8602893	Actuator – Paper Height Sensor	1	O/O	9	7	



Reissued: 19-May-00

Model: Stinger-C1 Paper Tray Unit/1Tray (PS400)	Date: 15-Dec-99	No.: MA861002a
---	-----------------	----------------

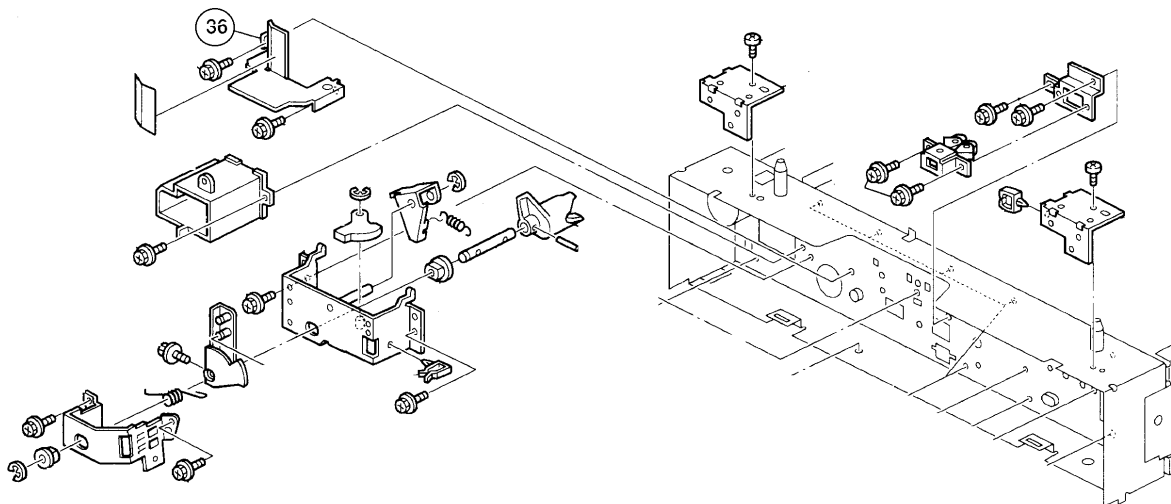
## MB Correction

The items in bold italics have been corrected or added.

Modified Article: Change in Spring Guard		Prepared by: K. Miura	
From: Technical Services Dept., GTS Division			
Reason for Modification:	<input type="checkbox"/> Parts catalog correction	<input type="checkbox"/> Vendor change	<input type="checkbox"/> To meet standards ( )
	<input checked="" type="checkbox"/> To facilitate assembly	<input type="checkbox"/> To improve reliability	
	<input type="checkbox"/> Part standardization	<input type="checkbox"/> Other	

Old part number	New part number	Description	Q'ty	Int	Page	Index	Note
A8601190	<b>A8611186</b>	Spring Guard	1	<b>X/O</b>	9	36	

The shape of the spring guard has been modified to facilitate removal.

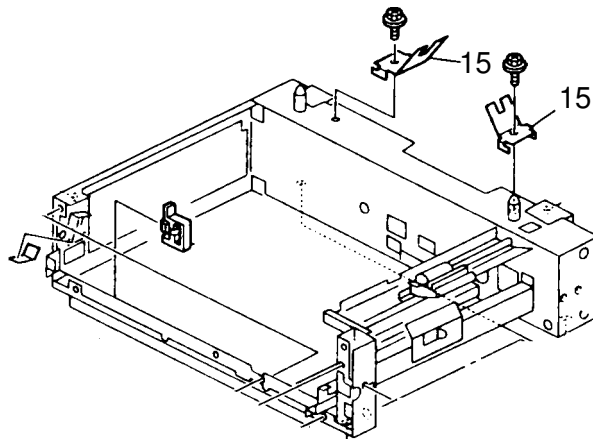


MODEL NAME	DESTINATION	CODE	JAPAN PRODUCTION
			SERIAL NO.
PS400	All RICOH subsidiaries, NRG, SAVIN	A861-17	H1691001380
PS400	Infotec	A861-26	3U81190001
PS400	Lanier	A861-55	L0499110001

Model: Stinger-C1 Paper Tray Unit /1Tray (PS400)		Date: 23-Mar-00	No.: MA861003
Modified Article: Mylar added to plate springs		Prepared by: K. Miura	
From: Technical Services Dept., GTS Division			
Reason for Modification:	<input type="checkbox"/> Parts catalog correction <input type="checkbox"/> To facilitate assembly <input type="checkbox"/> Part standardization	<input type="checkbox"/> Vendor change <input type="checkbox"/> To improve reliability <input checked="" type="checkbox"/> Other	<input type="checkbox"/> To meet standards (      )

For increased safety, a mylar strip has been added to both plate springs located in between the paper feed unit and mainframe.

Old part number	New part number	Description	Q'ty	Int	Page	Index	Note
H5194547	A8601140	Spring Plate	2	X/O	3	15	

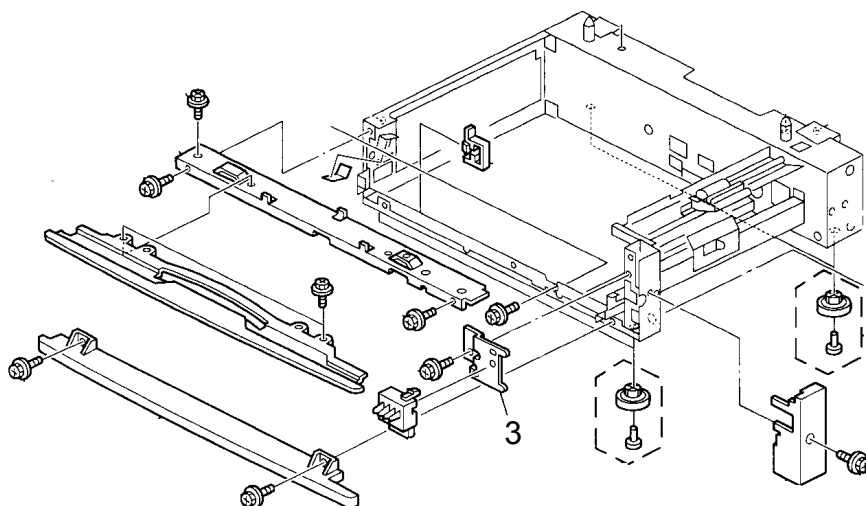


MODEL NAME	DESTINATION	CODE	JAPAN PRODUCTION SERIAL NO.
PS400	All RICOH subsidiaries, NRG, SAVIN	A861-17	H1600200001
PS400	Infotec	A861-26	3U80200001
PS400	Lanier	A861-55	L0490020001

Model: Stinger-C1 Paper Tray Unit/1Tray (PS400)		Date: 15-Jun-00	No.: MA861004
Modified Article: Shape Modification of Paper Size Sensor Bracket		Prepared by: K. Miura	
From: Technical Services Dept., GTS Division			
Reason for Modification:	<input type="checkbox"/> Parts catalog correction <input type="checkbox"/> To facilitate assembly <input type="checkbox"/> Part standardization	<input type="checkbox"/> Vendor change <input checked="" type="checkbox"/> To improve reliability <input type="checkbox"/> Other	<input type="checkbox"/> To meet standards (      )

The shape of the paper size sensor bracket has been changed to ensure proper paper size detection.

Old part number	New part number	Description	Q'ty	Int	Page	Index	Note
A8611121	A8611123	Bracket – Paper Size Sensor	1	X/X	3	3	



### RCL (Japan) Production

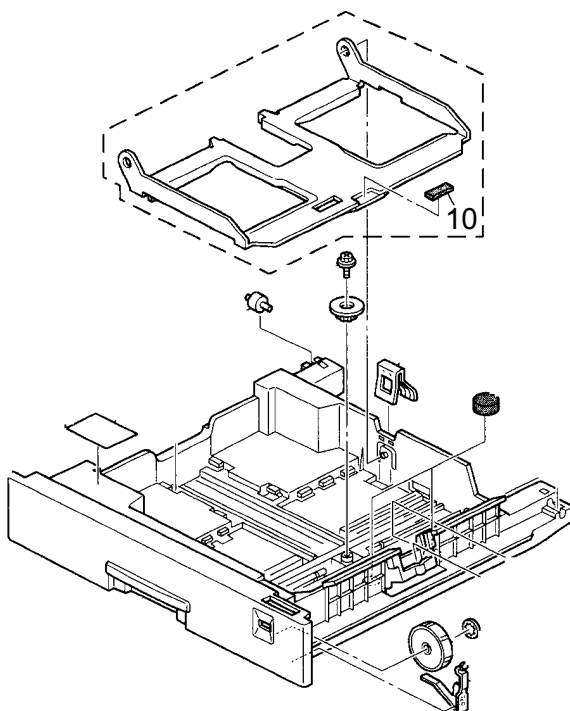
MODEL NAME	DESTINATION	CODE	SERIAL NO.
PS400	All RICOH subsidiaries, NRG, SAVIN	A861-17	H1600400001
PS400	Infotec	A861-26	3U80600001
PS400	Lanier	A861-55	L0490040001

Model: Stinger-C1 Paper Tray Unit/1 Tray (PS400)		Date: 29-Jun-00	No.: MA861005
Modified Article: Bottom plate pad modification - OHP transparency feed			Prepared by: K. Miura
From: Technical Services Dept., GTS Division			
Reason for Modification:	<input type="checkbox"/> Parts catalog correction <input type="checkbox"/> To facilitate assembly <input type="checkbox"/> Part standardization	<input type="checkbox"/> Vendor change <input checked="" type="checkbox"/> To improve reliability <input type="checkbox"/> Other	<input type="checkbox"/> To meet standards (      )

In order to ensure proper feed of OHP transparencies, a material with a lower rubber content is now used for the bottom plate pad. This material has a lower coefficient of friction and is effective against the following symptoms of OHP feed:

- Last sheet non-feed (jam display)
- Skewing
- Noise

Old part number	New part number	Description	Q'ty	Int	Page	Index	Note
G0292608	52152713	Bottom Plate Pad	1	X/O	5	10	



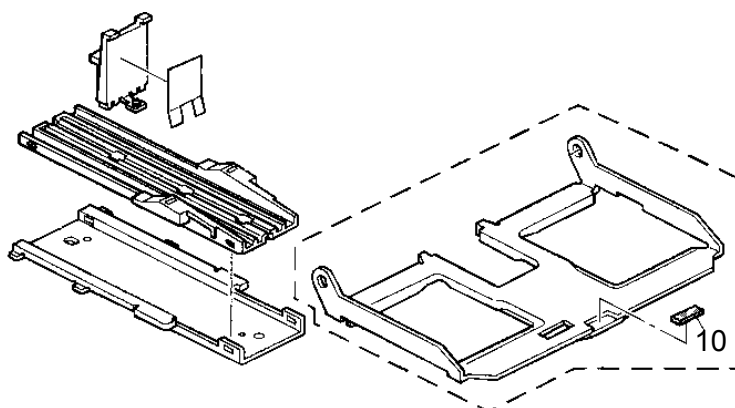
## RCL (Japan) Production

MODEL NAME	DESTINATION	CODE	SERIAL NO.
PS400	All RICOH subsidiaries, NRG, SAVIN	A861-17	H1690900001
PS400	Infotec	A861-26	3U809900001
PS400	Lanier	A861-55	L04990900001

Model: Stinger-C1 Paper Tray Unit / 1 Tray (PS400)		Date: 12-Oct-00	No.: MA861006
Modified Article: Base Pad		Prepared by: K. Miura	
From: Technical Services Dept., GTS Division			
Reason for Modification:	<input type="checkbox"/> Parts catalog correction <input type="checkbox"/> To facilitate assembly <input type="checkbox"/> Part standardization	<input type="checkbox"/> Vendor change <input type="checkbox"/> To improve reliability <input checked="" type="checkbox"/> Other	<input type="checkbox"/> To meet standards (      )

Due to the measurement specifications of the bottom plate pad, it is possible for the pad to be wider than the opening in the bottom plate. To ensure that the pad will fit in the opening, the base pad for the Russian will be used.

Old part number	New part number	Description	Q'ty	Int	Page	Index	Note
52152713		Bottom Plate Pad	1	O/O	5	10	
	A2672917	Base Pad	1	O/O	5	10	



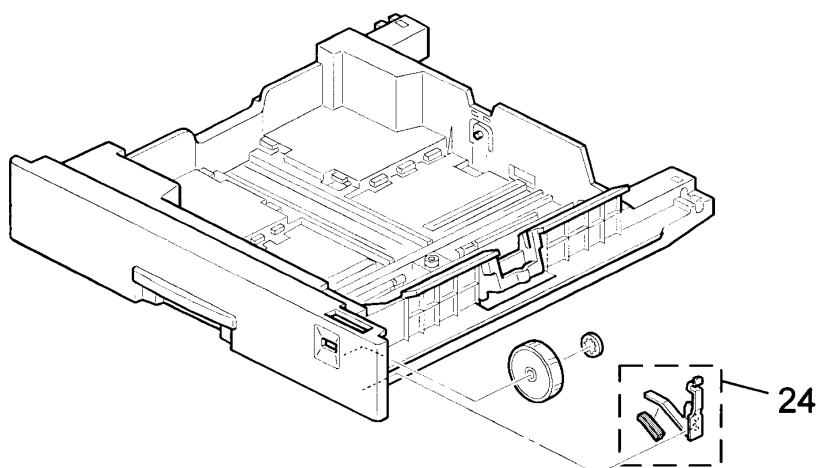
## RCL (Japan) Production

MODEL NAME	DESTINATION	CODE	SERIAL NO.
PS400	All RICOH subsidiaries, NRG, SAVIN	A861-17	H1691001191
PS400	Infotec	A861-26	3U81190001
PS400	Lanier	A861-55	L0499110001

Model: Stinger-C1 Paper Tray Unit/1Tray (PS400)		Date: 26-Feb-01	No.: MA861007
Modified Article: Spring Plate		Prepared by: K. Miura	
From: Technical Services Dept., GTS Division			
Reason for Modification:	<input type="checkbox"/> Parts catalog correction <input type="checkbox"/> To facilitate assembly <input type="checkbox"/> Part standardization	<input type="checkbox"/> Vendor change <input type="checkbox"/> To improve reliability <input checked="" type="checkbox"/> Other	<input type="checkbox"/> To meet standards (      )

The edge of the spring pate for the paper size dial is relatively sharp. To ensure proper safety, a sponge has been added to the plate.

Old part number	New part number	Description	Q'ty	Int	Page	Index	Note
A2672868	A2672870	Sponge – Spring Plate	1	X/O	5	24	



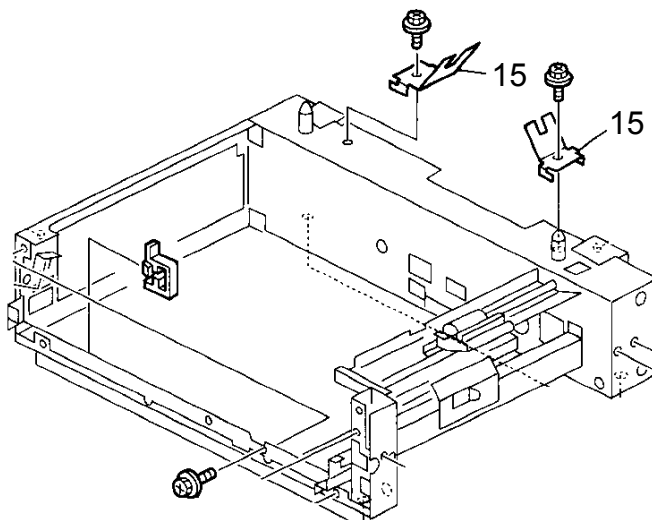
## RCL (Japan) Production

MODEL NAME	DESTINATION	CODE	SERIAL NO.
PS400	All RICOH subsidiaries, NRG, SAVIN	A861-17	H1601200001
PS400	Infotec	A861-26	3U8120xxxx
PS400	Lanier	A861-55	L0490120001

Model: Stinger-C1 Paper Tray Unit/1Tray (PS400)		Date: 13-Apr-01	No.: MA861008
Modified Article: Spring Plate		Prepared by: K. Miura	
From: Technical Services Dept., GTS Division			
Reason for Modification:	<input type="checkbox"/> Parts catalog correction <input type="checkbox"/> To facilitate assembly <input type="checkbox"/> Part standardization	<input type="checkbox"/> Vendor change <input type="checkbox"/> To improve reliability <input checked="" type="checkbox"/> Other	<input type="checkbox"/> To meet standards (      )

Although previously, a mylar was added to the spring plate to protect it from damage (MB #MA861003), the shape of the spring plate itself has now been modified to perform the same function.

Old part number	New part number	Description	Q'ty	Int	Page	Index	Note
A8601140	B3841146	Spring Plate	2	X/O	3	15	



## RCL (Japan) Production

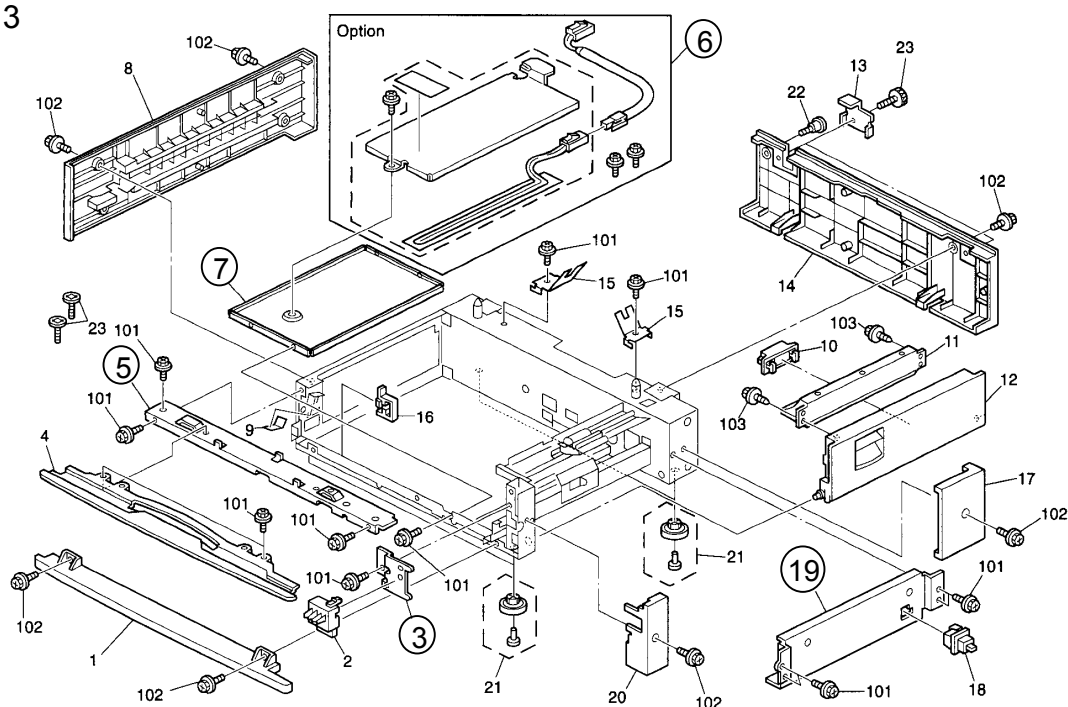
MODEL NAME	DESTINATION	CODE	SERIAL NO.
PS400	All RICOH subsidiaries, NRG, SAVIN	A861-17	H1610300001
PS400	Infotec	A861-26	3U8041XXXX
PS400	Lanier	A861-55	L0491030001

Model: Stinger-C1 Paper Tray Unit / 1 Tray (PS400)		Date: 10-Oct-01	No.: MA861009
Modified Article: Bracket Material Change		Prepared by: K. Miura	
From: Technical Services Dept., GTS Division			
Reason for Modification:	<input type="checkbox"/> Parts catalog correction <input type="checkbox"/> To facilitate assembly <input type="checkbox"/> Part standardization	<input type="checkbox"/> Vendor change <input type="checkbox"/> To improve reliability <input checked="" type="checkbox"/> Other	<input type="checkbox"/> To meet standards (      )

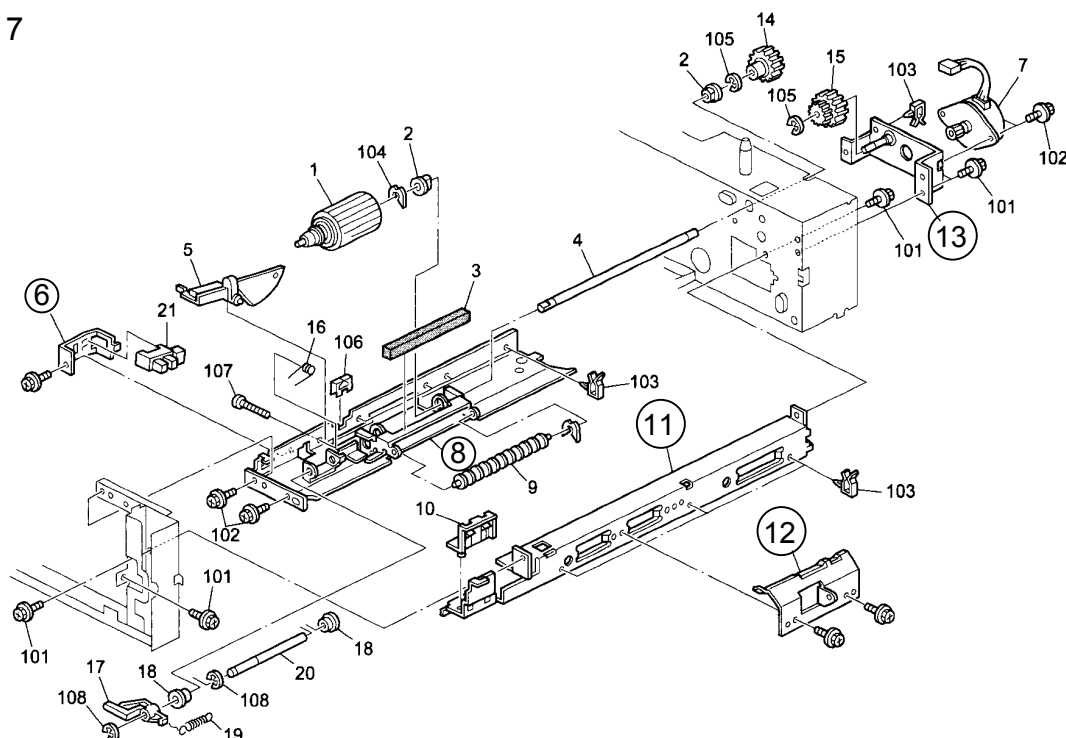
A material change has been applied to the following brackets and bracket portions of the following components.

Old part number	New part number	Description	Q'ty	Int	Page	Index	Note
A8611106	B3851106	Upper Front Stay	1	O/O	3	5	
A8611108	B3851108	Right Stay	1	O/O	3	19	
A8611123	B3851123	Bracket - Paper Size Switch	1	O/O	3	3	
A8611136	B3851136	Tray Heater Bracket	1	O/O	3	7	
A8616300	B3856300	Tray Heater	1	O/O	3	6	
A2672805	B0242805	Bracket - Paper End Sensor	2	O/O	7	6	
A2672842	B0242842	Bracket - Friction Pad Guide	2	O/O	7	12	
A8601090	B3841090	Right Guide Rail	2	O/O	7	11	
A8602555	B3842555	Feed Roller Bracket	2	O/O	7	8	
A8612825	B3852825	Feed Motor Bracket	1	O/O	7	13	
A2672781	B0242781	Pressure Lever Bracket	2	O/O	9	26	
A2672908	B0242908	Tray Holder Bracket	2	O/O	9	33	
A8602726	B3842726	Lift Motor Bracket	2	O/O	9	12	
A8602728	B3842728	Spring Holder Bracket	2	O/O	9	17	
A8602893	B3842893	Actuator - Paper Height Sensor	2	O/O	9	7	
A8602895	B3842895	Lower Lever - Lift Motor	1	O/O	9	24	
A8611125	B3851125	Rear Cover Bracket	2	O/O	9	34	
A8611129	B3851129	Interface Bracket Guard	1	O/O	9	32	
A8611140	B3851140	Interface Board Bracket	1	O/O	9	28	
A8611186	B3851186	Spring Guard	1	O/O	9	36	
A8612566	B3852566	Main Bracket - Lift Motor	1	O/O	9	27	

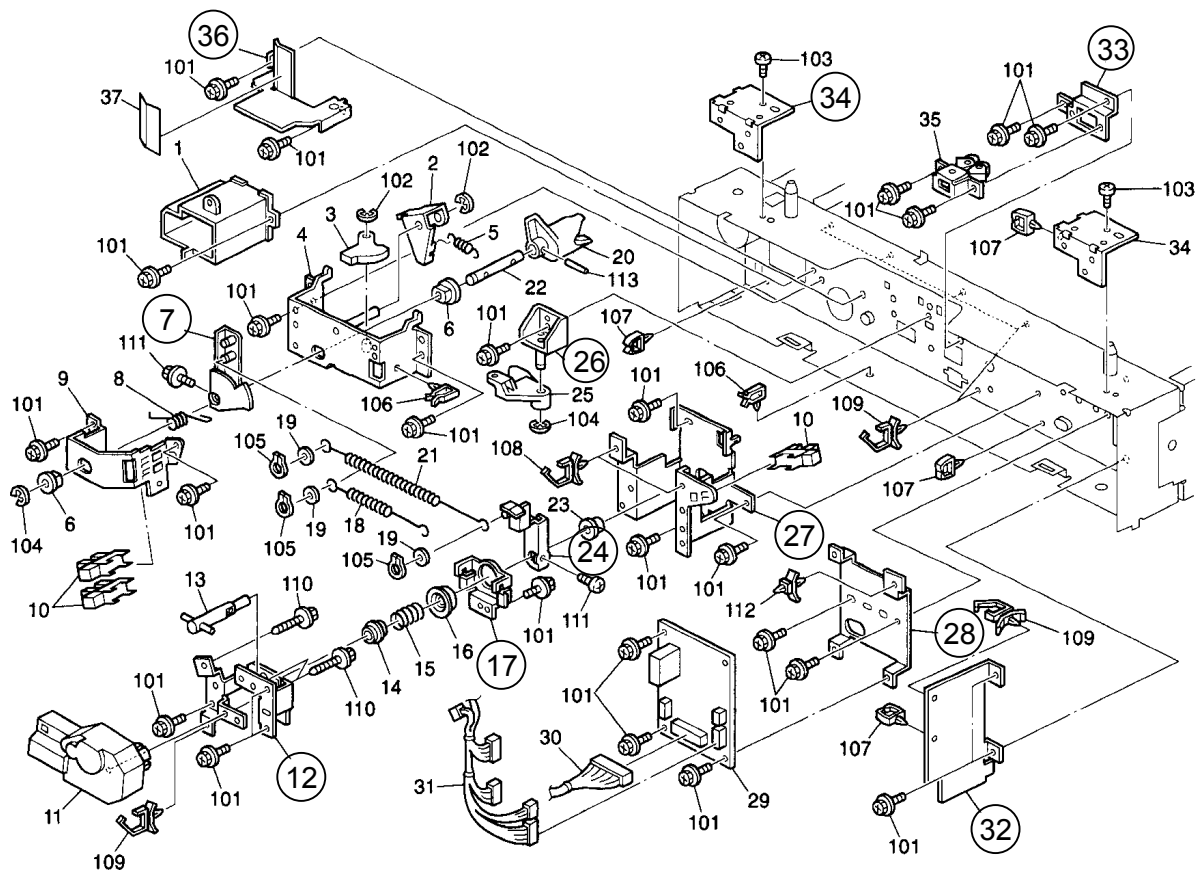
Page 3



Page 7



Page 9



Model: Stinger-C1 Paper Tray Unit / 1 Tray (PS400)

Date: 10-Oct-01

No.: MA861009

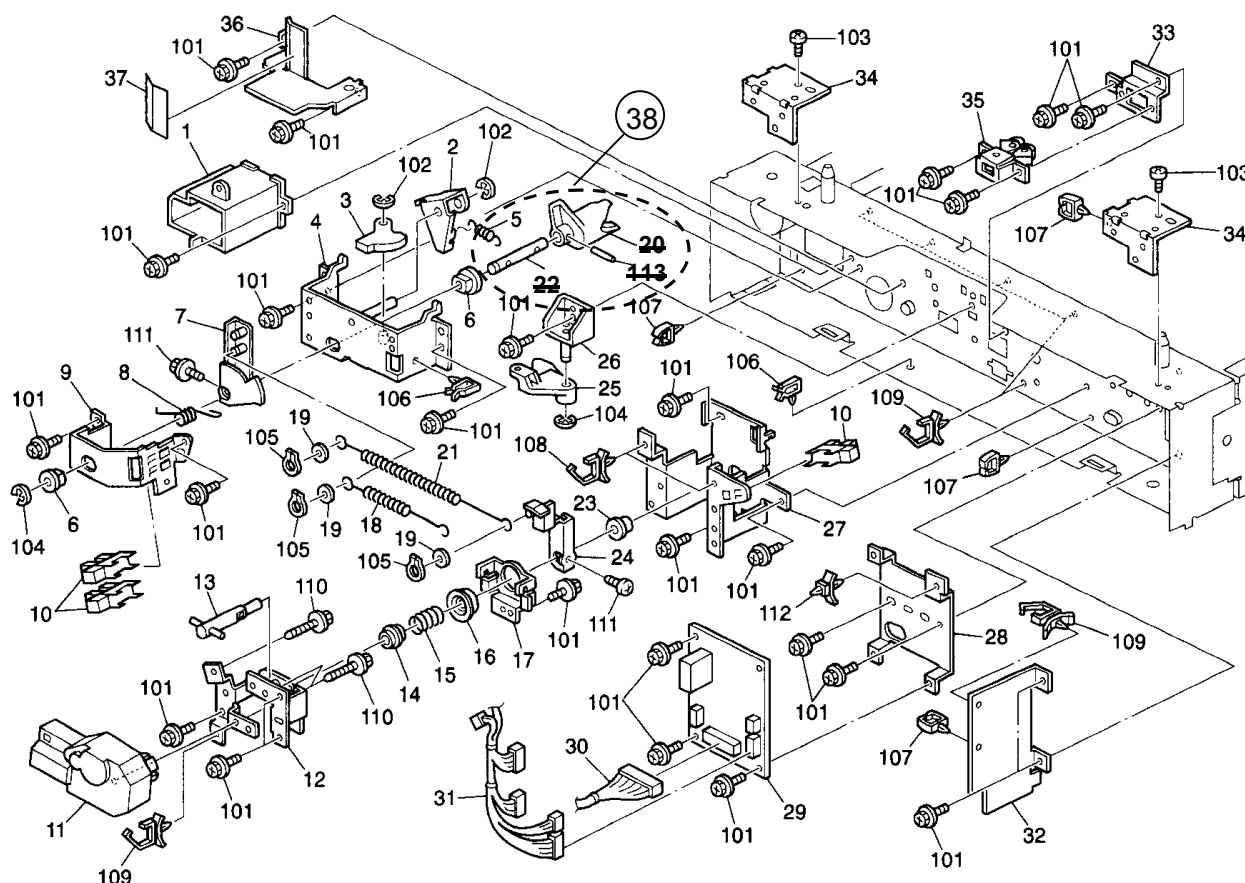
**RCL (Japan) Production**

MODEL NAME	DESTINATION	CODE	SERIAL NO.
PS400	All RICOH subsidiaries, NRG, SAVIN	A861-17	H1610300001
PS400	Infotec	A861-26	3U8041xxxx
PS400	Lanier	A861-55	L0491030001

Model: Stinger-C1 Paper Tray Unit /1Tray (PS400)		Date: 10-Oct-01	No.: MA861010
Modified Article: Parts Catalog Correction		Prepared by: K. Miura	
From: Technical Services Dept., GTS Division			
Reason for Modification:	<input checked="" type="checkbox"/> Parts catalog correction <input type="checkbox"/> To facilitate assembly <input type="checkbox"/> Part standardization	<input type="checkbox"/> Vendor change <input type="checkbox"/> To improve reliability <input type="checkbox"/> Other	<input type="checkbox"/> To meet standards (      )

Please correct your Part Catalog as follows:

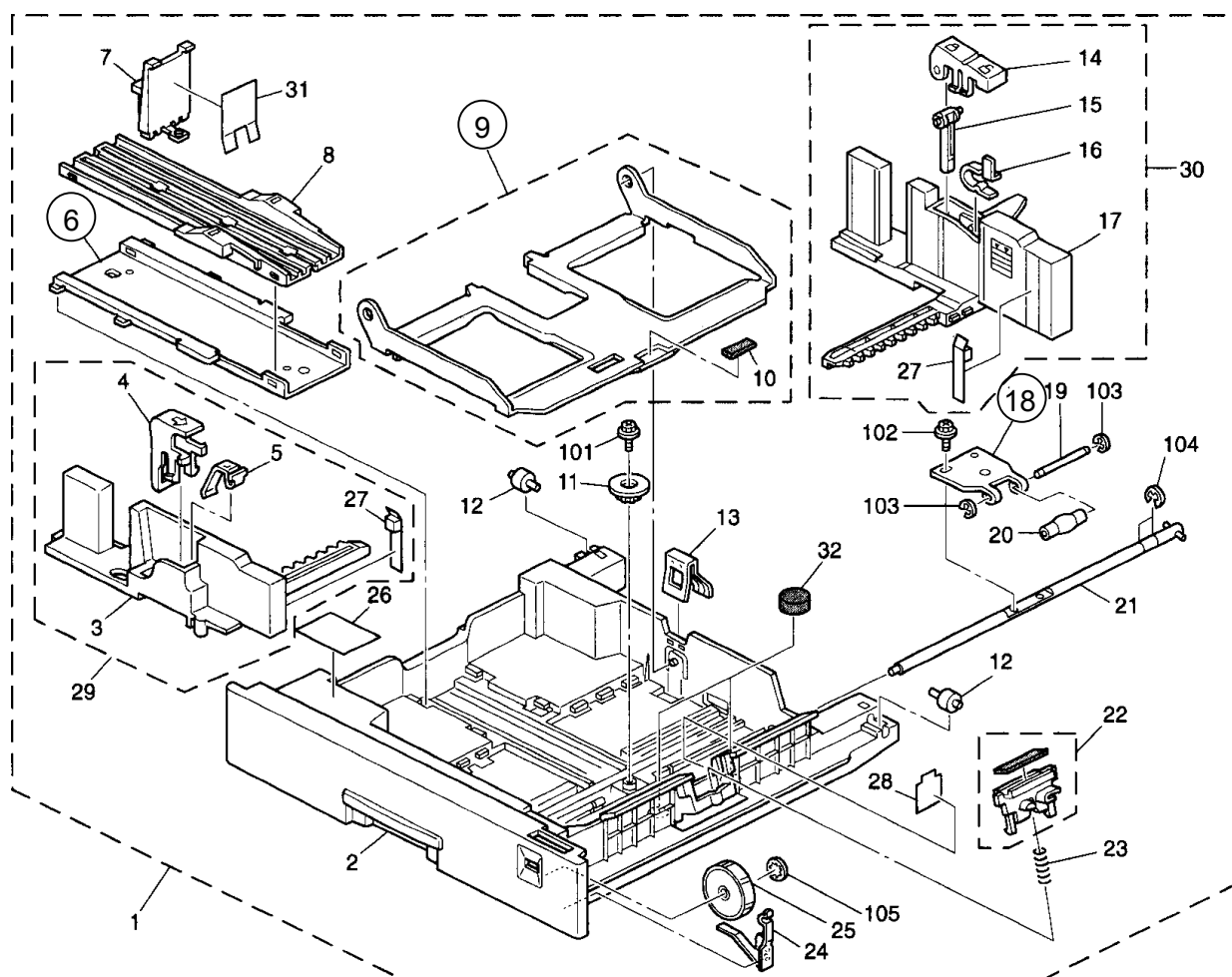
Old part number	New part number	Description	Q'ty	Page	Index	Note
A2672761		Joint – Shaft	1	9	20	
A2672762		Shaft	1	9	22	
06230140E		Spring Pin – 3x14mm	1	9	113	
	A2672756	Joint - Shaft	1	9	38	



Model: Stinger-C1 Paper Tray Unit / 1Tray (PS400)		Date: 10-Oct-01	No.: MA861011
Modified Article: Paper Feed Unit		Prepared by: K. Miura	
From: Technical Services Dept., GTS Division			
Reason for Modification:	<input type="checkbox"/> Parts catalog correction	<input type="checkbox"/> Vendor change	<input type="checkbox"/> To meet standards ( )
	<input type="checkbox"/> To facilitate assembly	<input type="checkbox"/> To improve reliability	
	<input type="checkbox"/> Part standardization	<input checked="" type="checkbox"/> Other	

A material change has been applied to the following brackets and bracket portions of the following components.

Old part number	New part number	Description	Q'ty	Int	Page	Index	Note
A2672874	B0242874	Base Slider	1	O/O	5	6	
A2672861	B0242861	Bottom Plate	1	O/O	5	9	
A2672856	B0242856	Bracket - Rising	1	O/O	5	18	

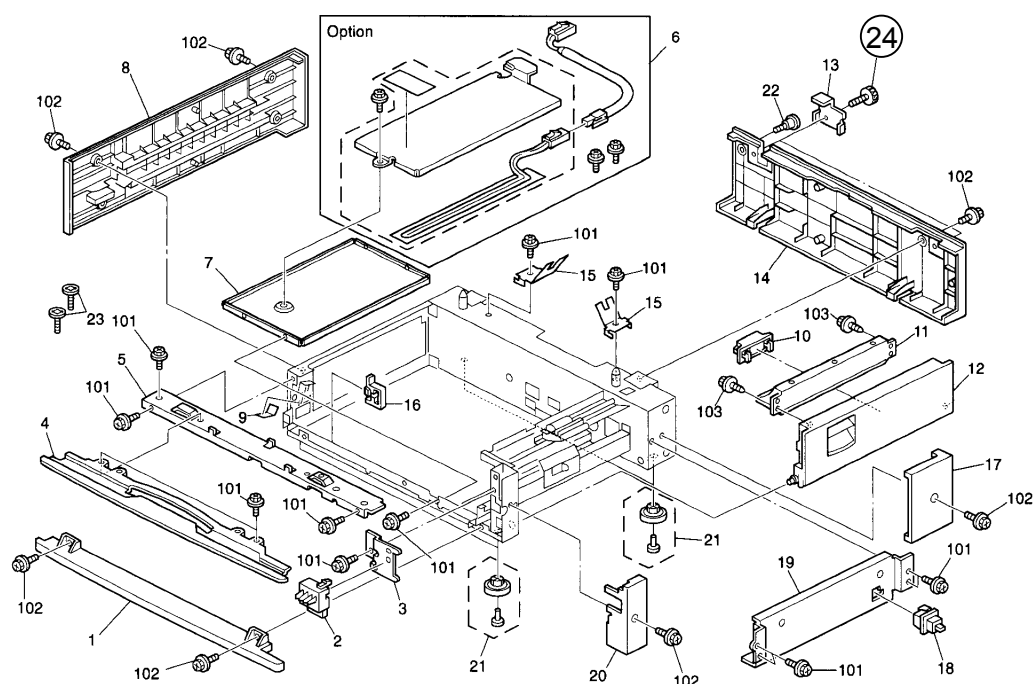


Model: Stinger-C1 Paper Tray Unit/1Tray (PS400)		Date: 13-Dec-01	No.: MA861012
Modified Article: Rear Cover Screw		Prepared by: K.Miura	
From: Technical Services Dept., GTS Division			
Reason for Modification:	<input type="checkbox"/> Parts catalog correction <input type="checkbox"/> To facilitate assembly <input type="checkbox"/> Part standardization	<input type="checkbox"/> Vendor change <input checked="" type="checkbox"/> To improve reliability <input type="checkbox"/> Other	<input type="checkbox"/> To meet standards (      )

To maximize the Rear Cover's resistance to warping under high temperatures (over 60°C), the M4x10 Flat Knob Screw for the cover has been changed to an M4x11 screw in the two areas shown below (index 24).

**Note:** Since the M4x10 screw (index 23) is still being used in the remaining 2 areas, its service parts quantity has been changed from 4 to 2 with no P/N change.

Old part number	New part number	Description	Q'ty	Int	Page	Index	Note
AA143508	AA143508	Flat Knob Screw – M4x10	4-2		3	23	
	AA143775	Screw: M4x11	2	X/O	3	24	



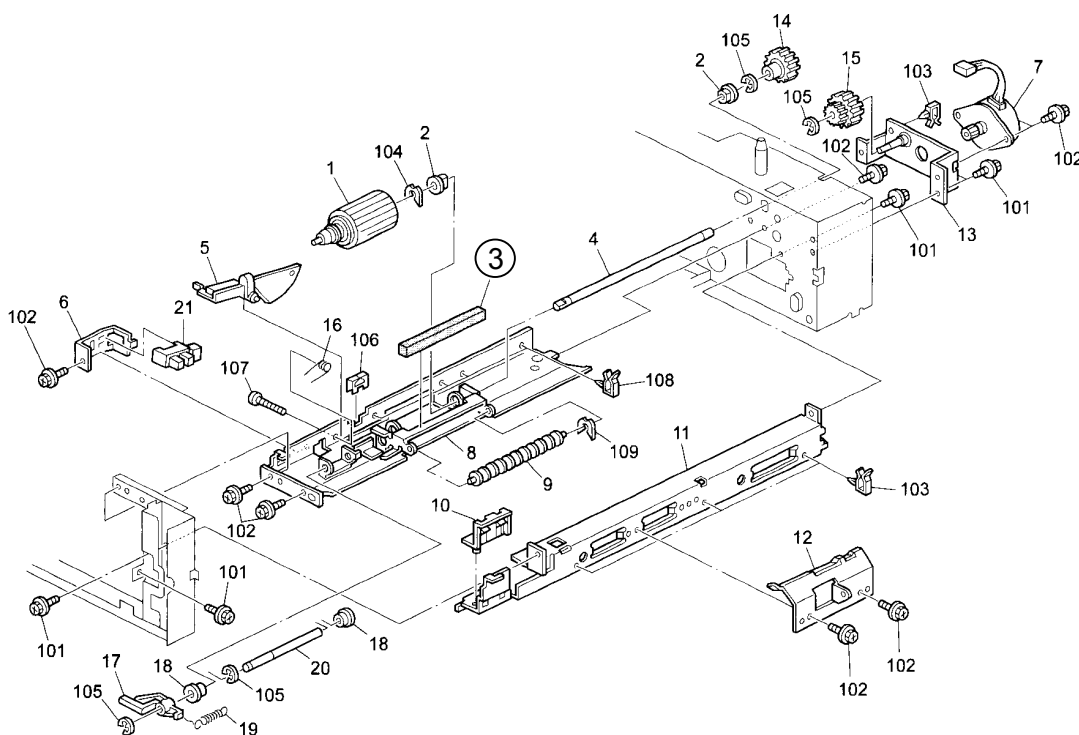
## RCL (Japan) Production

MODEL NAME	DESTINATION	CODE	SERIAL NO.
PS400	All RICOH subsidiaries, NRG, SAVIN	A861-17	H1610300001
PS400	Infotec	A861-26	3U8012xxxx
PS400	Lanier	A861-55	L0491030001

Model: Stinger-C1 Paper Tray Unit / 1 Tray (PS400)		Date: 14-Dec-01	No.: MA861013
Modified Article: Guide Plate Cushion		Prepared by: K. Miura	
From: Technical Services Dept., GTS Division			
Reason for Modification:	<input type="checkbox"/> Parts catalog correction <input type="checkbox"/> To facilitate assembly <input type="checkbox"/> Part standardization	<input type="checkbox"/> Vendor change <input checked="" type="checkbox"/> To improve reliability <input type="checkbox"/> Other	<input type="checkbox"/> To meet standards (      )

The following part has been changed to ensure that noise does not occur during feeding.

Old part number	New part number	Description	Q'ty	Int	Page	Index	Note
A8602559	B3852559	Cushion Guide Plate	1	O/O	7	3	



Model: Stinger-C1 Paper Tray Unit /1 Tray(PS400)		Date: 19-Jul-02	No.: MA861014
Modified Article: Paper Tray Assembly		Prepared by: K. Miura	
From: Technical Services sec. Service Planning Dept.			
Reason for Modification:	<input type="checkbox"/> Parts catalog correction <input type="checkbox"/> To facilitate assembly <input type="checkbox"/> Part standardization	<input type="checkbox"/> Vendor change <input checked="" type="checkbox"/> To improve reliability <input type="checkbox"/> Other	<input type="checkbox"/> To meet standards (       )

The following has been changed to ensure that the Paper Tray can be inserted and pulled out more smoothly.

Old part number	New part number	Description	Q'ty	Int	Page	Index	Note
A8607341	A8607342	Paper Tray Assembly	1	O/O	5	1	

