

Model	PS270 / 280 / 290	Volt/Hz	Date of Modification	Serial Number
Modified Article	Interface Board			
Reason for Modification	To meet the CE Mark standards.			

Old P/N	New P/N	Description	Q'ty Used	Inter-change-ability	Parts Catalog	
					Index No.	Page
A5495100	A5495103	Interface Board (A549)	1 → 1	X/O	3	7 (PS280)
A5505100	A5505103	Interface Board (A550)	1 → 1	X/O	3	7 (PS290)
A5535100	A5535103	Interface Board (A553)	1 → 1	X/O	30	7 (PS270)

Note: In markets other than Europe, the interchangeability is O/O.


M. Iwasa, Manager
Technical Support Department

MODEL NAME	V/Hz	DESTINATION	CODE	SERIAL NUMBER
PS 290	115/60	USA, Canada	A549-15	3A15070001
PS 290	115/60 220, 240/50	Whole World	A549-17	A3775070001
PS 290	115/60 220, 240/50	Whole World	A549-22	887508XXXX
PS 290	220, 240/50	Europe	A549-26	3G40750001
PS 280	115/60	USA, Canada	A550-15	2A95070001
PS 280	115/60 220, 240/50	Whole World	A550-17	A3785070001
PS 280	115/60 220, 240/50	Whole World	A550-22	8865070001
PS 280	220, 240/50	Europe	A550-26	3G50750001
PS 270	115/60	USA, Canada	A553-15	2A85070001
PS 270	115/60 220, 240/50	Whole World	A553-17	A3795070001
PS 270	115/60 220, 240/50	Whole World	A553-22	8855070001
PS 270	220, 240/50	Europe	A553-26	3G60750001

Model	PS270 / 280 / 290	Volt/Hz	Date of Modification	Serial Number
Modified Article	Rear Cover			
Reason for Modification	To ensure the grounding of the rear cover, two screw holes have been added at the bottom of the rear cover and a grounding plate has been added to the Upper Rear Cover Holder.			

Old P/N	New P/N	Description	Q'ty Used	Inter-change-ability	Parts Catalog		
					Index No.	Page	
A549 1227	A549 1229	Rear Cover	1 → 1	X/X	27	3	PS280 / 290
A549 1272	A549 2373	Rear Cover	1 → 1	X/X	7	3	PS270
A549 1276	A549 1266	Upper Rear Cover Holder	2 → 2	X/O	1	7	

The interchangeability of old the both and new rear covers is X/X, because the bracket for the screws that secure the rear cover at the bottom has also been added to the base plate of the machine. The base plate is not a service part.

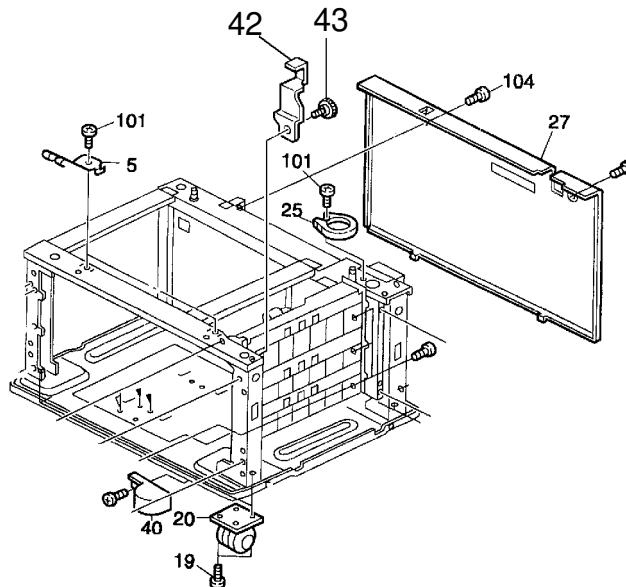

T. Inoue, General Manager
1st Field Information Dept. QAC

MODEL NAME	V/Hz	DESTINATION	CODE	SERIAL NUMBER
PS 290	115/60	USA, Canada	A549-15	3A16070001
PS 290	115/60 220, 240/50	Whole World	A549-17	A3776050001
PS 290	115/60 220, 240/50	Whole World	A549-22	8876050001
PS 290	220, 240/50	Europe	A549-26	3G40760001
PS 280	115/60	USA, Canada	A550-15	2A96070001
PS 280	115/60 220, 240/50	Whole World	A550-17	
PS 280	115/60 220, 240/50	Whole World	A550-22	8866050001
PS 280	220, 240/50	Europe	A550-26	3G50560001
PS 270	115/60	USA, Canada	A553-15	2A86070001
PS 270	115/60 220, 240/50	Whole World	A553-17	A3796060001
PS 270	115/60 220, 240/50	Whole World	A553-22	8856050001
PS 270	220, 240/50	Europe	A553-26	3G60760001

Model	PS280 / 290	Volt/Hz	Date of Modification	Serial Number
Modified Article	Parts Catalog	No serial number cut-in information.		
Reason for Modification	The Front Right Bracket and the knob screw for the bracket are missing in the PS280 / 290 parts catalog.			

Please add these numbers to your parts catalog.

New P/N	Description	Q'ty Used	Inter-change-ability	Parts Catalog	
				Index No.	Page
A549 6101	Front Right Bracket	0 → 1	-----	42	3
A549 6102	Knob Screw	0 → 1	-----	43	3



T. Inoue
T. Inoue, General Manager
1st Field Information Dept. QAC

ISSUED ON: October 31, '96

Model	PS280/290	Volt/Hz	Date of Modification	Serial Number
Modified Article	Universal Tray	No serial number cut-in information		
Reason for Modification	Parts standardization with other models.			

Old P/N	New P/N	Description	Q'ty Used	Inter-change-ability	Parts Catalog	
					Index No.	Page
A134 2951	A134 2952	Universal Tray	1 → 1	O/O	13	11



T. Inoue, General Manager
1st Field Information Dept. QAC

Model	PS280 / 290	Volt/Hz	Date of Modification	Serial Number
Modified Article	Tray Side Fences			
Reason for Modification	The material of the side fences has been changed to improve durability.			

Old P/N	New P/N	Description	Q'ty Used	Inter-change-ability	Parts Catalog	
					Index No.	Page
AF01 6070	AF01 6080	Front Side Fence	1 → 1	X/X	3	11
AF01 6071	AF01 6081	Rear Side Fence	1 → 1	X/X	11	11

The interchangeability as a set is X/O.

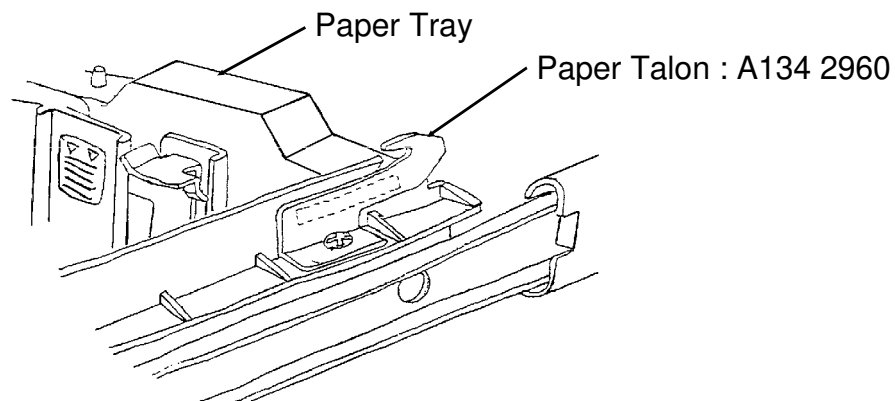

T. Inoue, General Manager
QAC 1st Field Information Dept.

MODEL NAME	V/Hz	DESTINATION	CODE	SERIAL NUMBER
PS 290	115/60	USA, Canada	A549-15	3A1602XXXX
PS 290	115/60 220, 240/50	Whole World	A549-17	A377602XXXX
PS 290	115/60 220, 240/50	Whole World	A549-22	887602XXXX
PS 290	220, 240/50	Europe	A549-26	3G4026XXXX
PS 280	115/60	USA, Canada	A550-15	2A9602XXXX
PS 280	115/60 220, 240/50	Whole World	A550-17	A378602XXXX
PS 280	115/60 220, 240/50	Whole World	A550-22	886602XXXX
PS 280	220, 240/50	Europe	A550-26	3G5026XXXX
PS 270	115/60	USA, Canada	A553-15	2A8602XXXX
PS 270	115/60 220, 240/50	Whole World	A553-17	A379602XXXX
PS 270	115/60 220, 240/50	Whole World	A553-22	885602XXXX
PS 270	220, 240/50	Europe	A553-26	3G6026XXXX

ISSUED ON: October 31, '96

Model	PS280 / 290	Volt/Hz	Date of Modification	Serial Number
Modified Article	Paper Talon	No serial number cut-in information		
Reason for Modification	The Paper Talon has been added on the paper tray to prevent SC codes E501 - E506 when paper falls to the rear side of the tray and blocks the lift mechanism. The tray # A134 2953 is the tray with the Paper Talon. Part numbers have been assigned for the Paper Tray and the Paper Talon.			

Old P/N	New P/N	Description	Q'ty Used	Inter-change-ability	Parts Catalog	
					Index No.	Page
	A134 2953	Paper Tray	0 → 1	-----	18	11
	A134 2960	Paper Talon	0 → 1	-----	19	11



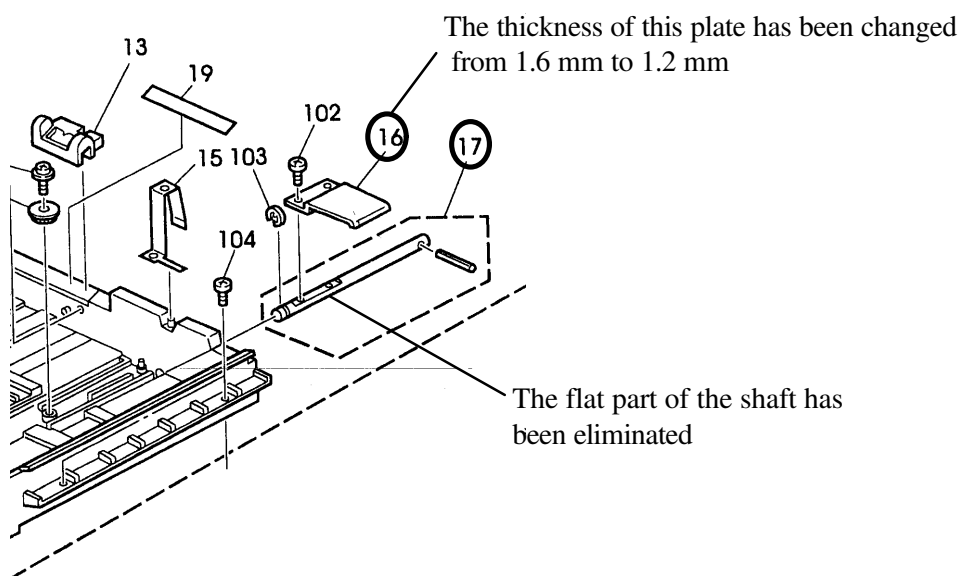
T. Inoue
T. Inoue, General Manager
QAC 1st Field Information Dept.

Model: PS280 / PS290		Date: 15-Apr-97	No: 7									
Modified Article: Tray Bottom Lift Shaft / Lever		Prepared by: S.Hizen										
From: QAC 1st Field Information Dept.		Checked by: T. Inoue <i>T. Inoue</i>										
Reason for Modification:	<table><tr><td><input type="checkbox"/> Parts catalog correction</td><td><input type="checkbox"/> Vendor change</td><td><input type="checkbox"/> To meet standards</td></tr><tr><td><input type="checkbox"/> To facilitate assembly</td><td><input type="checkbox"/> To improve reliability</td><td>()</td></tr><tr><td><input checked="" type="checkbox"/> Part standardization</td><td><input type="checkbox"/> Other</td><td></td></tr></table>			<input type="checkbox"/> Parts catalog correction	<input type="checkbox"/> Vendor change	<input type="checkbox"/> To meet standards	<input type="checkbox"/> To facilitate assembly	<input type="checkbox"/> To improve reliability	()	<input checked="" type="checkbox"/> Part standardization	<input type="checkbox"/> Other	
<input type="checkbox"/> Parts catalog correction	<input type="checkbox"/> Vendor change	<input type="checkbox"/> To meet standards										
<input type="checkbox"/> To facilitate assembly	<input type="checkbox"/> To improve reliability	()										
<input checked="" type="checkbox"/> Part standardization	<input type="checkbox"/> Other											

No serial number cut-in information.

Old part number	New part number	Description	Qty	Int	Page	Index	Note
A134 - 2967	A204 - 2972	Bottom Lift Lever	1-1	X/X	11	16	*
A134 - 2966	A204 - 2971	Bottom Lift Shaft	1-1	X/X	11	17	*

These parts are interchangeable as a set. (o/o as a set)



Model: PS280/290		Date: 31-May-97	No: 8
Modified Article: Paper Tray & Side Fences		Prepared by: S.Hizen	
From: QAC 1st Field Information Dept.			
Reason for Modification:	<input type="checkbox"/> Parts catalog correction <input type="checkbox"/> Vendor change <input type="checkbox"/> To meet standards <input type="checkbox"/> To facilitate assembly <input type="checkbox"/> To improve reliability () <input checked="" type="checkbox"/> Part standardization <input checked="" type="checkbox"/> Other		

The following parts have been changed to standardize with the Phoenix Mark 2.

This modification is also to secure both fence positions with screws.

Old part	New part	Description	Qty	Int	Page	Index	Note
AF016080	AF016084	Front Side Fence	1-1	X/X	11	3	*①②
A1342953	A2042953	Paper Tray	1-1	X/X	11	18	*①
AF016081	AF016085	Rear Side Fence	1-1	X/X	11	11	*①②

Note:

① The interchangeability of these three parts as a set is X/O.

② Both old side fences are still available as service parts.

The start serial number cut-ins are as follows:

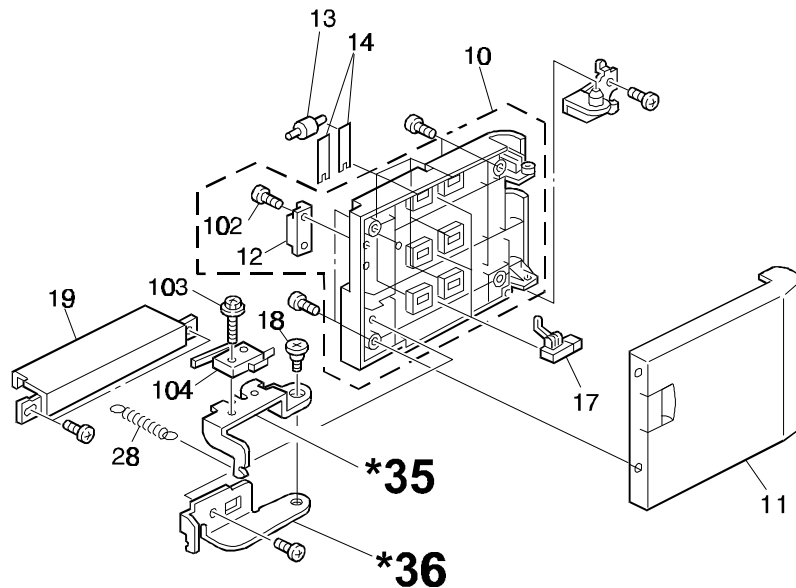
MODEL NAME	V/ Hz	DESTINATION	CODE	SERIAL NUMBER
PS 290	115/ 60	USA, Canada	A549- 15	3A17040001
PS 290	220, 240/ 50 115/ 60	Whole World	A549- 17	A3777040001
PS 290	220, 240/ 50 115/ 60	Whole World	A549- 22	8877040001
PS 290	220, 240/ 50	Europe	A549- 26	3G40470001
PS 280	115/ 60	USA, Canada	A550- 15	2A97040001
PS 280	220, 240/ 50 115/ 60	Whole World	A550- 17	A3787040001
PS 280	220, 240/ 50 115/ 60	Whole World	A550- 22	8867040001
PS 280	220, 240/ 50	Europe	A550- 26	3G50470001

Model: PS270		Date: 30-Jun-97	No: 9
Modified Article: Part number assignment		Prepared by: S. Hizen	
From: QAC 1st Field Information Dept.			
Reason for Modification:	<input checked="" type="checkbox"/> Parts catalog correction	<input type="checkbox"/> Vendor change	<input type="checkbox"/> To meet standards
	<input type="checkbox"/> To facilitate assembly	<input type="checkbox"/> To improve reliability	()
	<input type="checkbox"/> Part Standardization	<input type="checkbox"/> Other	

(No serial number cut-in information)

Please add the following part numbers to your parts catalog.

New part number	Description	Qty	Page	Index
A552 2567	Upper Bracket	1	3	35
A552 2568	Lower Bracket	1	3	36

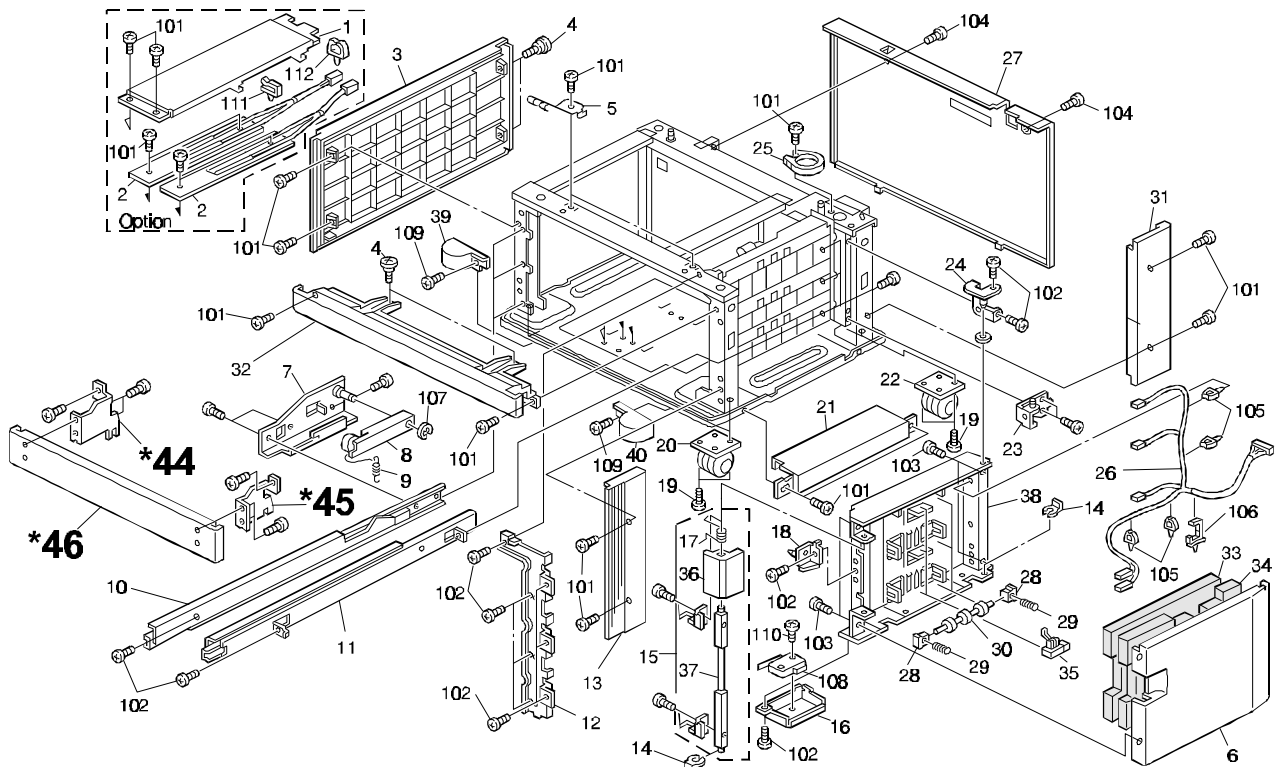


Model: PS280/PS290		Date: 30-Jun-97	No: 10
Modified Article: Parts Catalog Correction		Prepared by: S. Hizen	
From: QAC 1st Field Information Dept.			
Reason for Modification:	<input checked="" type="checkbox"/> Parts catalog correction <input type="checkbox"/> Vendor change <input type="checkbox"/> To meet standards <input type="checkbox"/> To facilitate assembly <input type="checkbox"/> To improve reliability () <input type="checkbox"/> Part Standardization <input type="checkbox"/> Other		

(No serial number cut-in information)

Please add the following part numbers and the illustrations to your parts catalog.

New part number	Description	Qty	Page	Index
A553 1311	Cover Bracket - Front Lower Left	1	3	44
A553 1310	Cover Bracket - Front Lower Right	1	3	45
A553 1303	Front Lower Cover	1	3	46



Model: PS280/PS290 for AD3		Date: 31-Oct-98	No.: 11
Modified Article: Heater Kit		Prepared by: E. Fukuyama	
From: GTS and S Field Information Dept.			
Reason for Modification:	<input type="checkbox"/> Parts catalog correction <input type="checkbox"/> To facilitate assembly <input type="checkbox"/> Part standardization	<input type="checkbox"/> Vendor change <input type="checkbox"/> To improve reliability <input checked="" type="checkbox"/> Other	<input type="checkbox"/> To meet standards ()

The following part has been added as a service part.
Please add this to your parts catalog.

Old part number	New part number	Description	Qty	Int	Page	Index	Note
	A5499500	Heater Kit	1		3	42	

