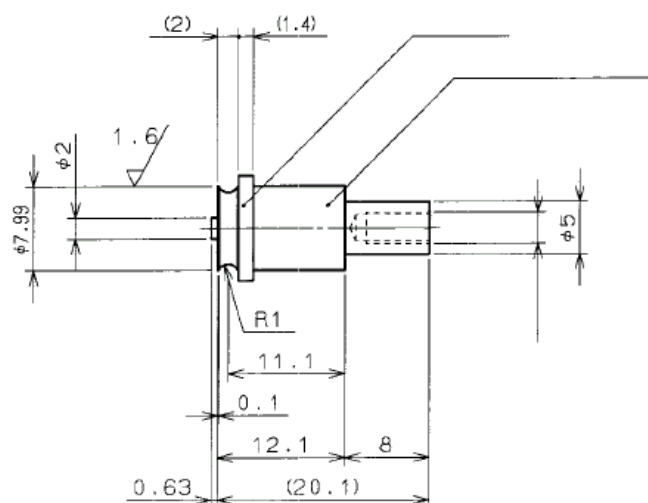


Model: Bellini		Date: 25-Apr-03	No.: RA294061
Subject: Service Parts of Punch Heads		Prepared by: S. Orita	
From: 2nd Tech Support Sec. Service Support Dept.			
Classification:	<input checked="" type="checkbox"/> Troubleshooting <input type="checkbox"/> Mechanical <input type="checkbox"/> Paper path <input type="checkbox"/> Other ()	<input type="checkbox"/> Part information <input type="checkbox"/> Electrical <input type="checkbox"/> Transmit/receive	<input type="checkbox"/> Action required <input type="checkbox"/> Service manual revision <input type="checkbox"/> Retrofit information

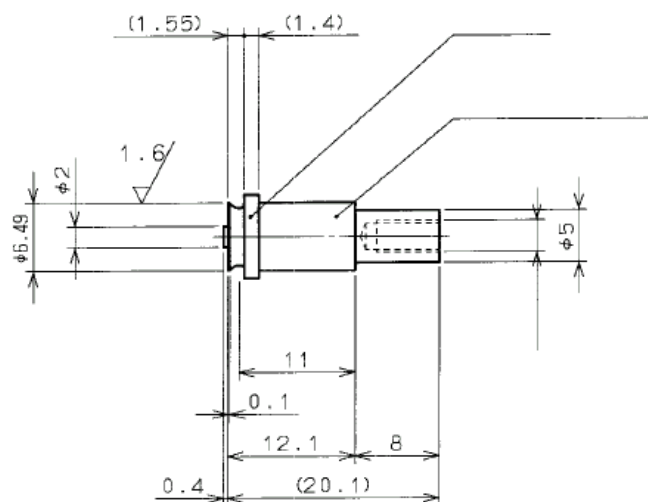
The following punch heads have been registered as service parts for replacement in the field, so that the entire punch unit does not have to be replaced when the punch heads fail:

P/N A8129501 (Punch Head – 8 mm) --- North America Version

P/N A8129502 (Punch Head - 6.5mm) --- European Version



P/N A8129501



P/N A8129502

Model: Bellini

Date: 25-Apr-03

No.: RA294061

Note:

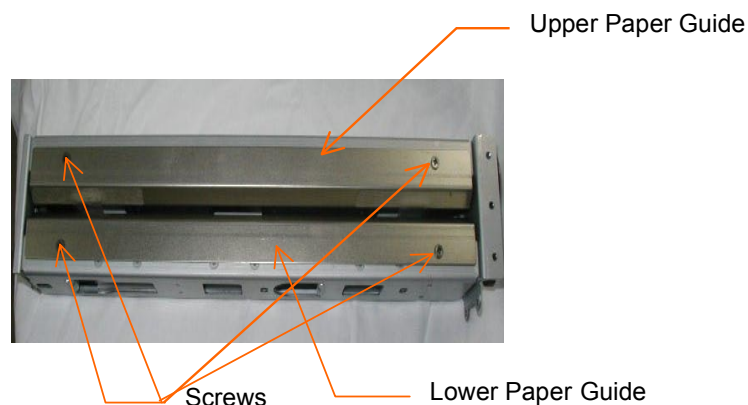
1. To ensure a smoother punch head/receiver operation, the service part punch head is smaller than that fitted in new production machines. This creates a better match between the two, as both experience gradual wear during the course of operation.

Visual distinction: Service part punch head is gold (Production head is silver.)

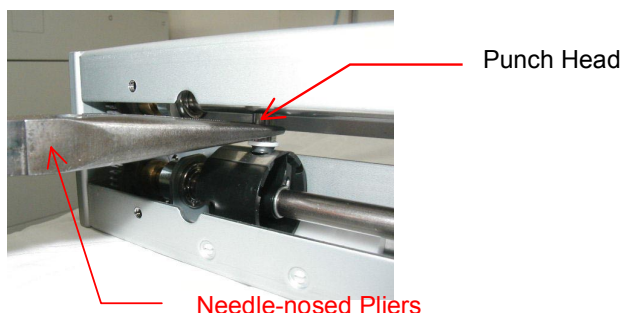
2. If the problem persists even after replacing the punch head, we recommend replacing the entire punch unit.
3. The punch heads can only be supplied as service parts for the Bellini-C1, because for other models such as the B-C2, additional precise adjustments are required.

Punch Head Replacement Procedure

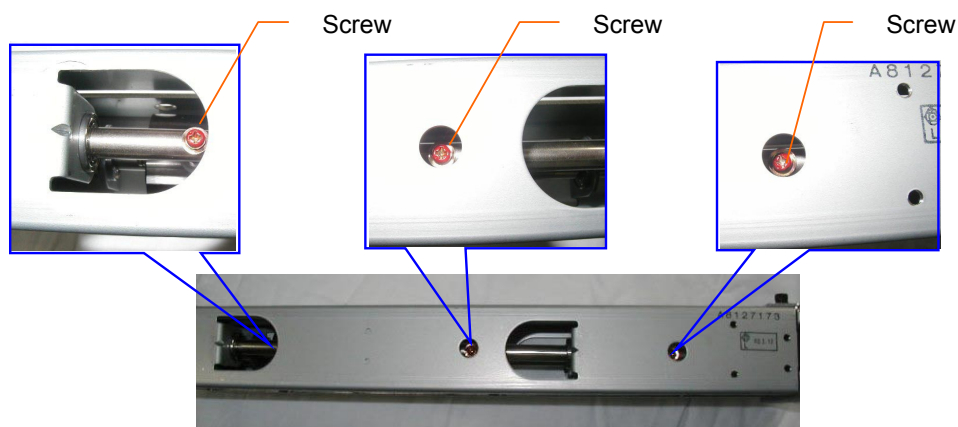
1. Remove the upper and lower guides (4 screws).



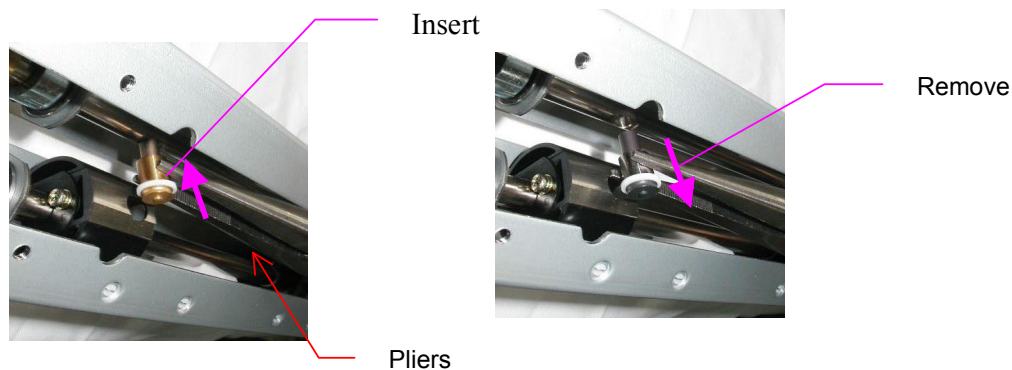
2. Rotate the drive gear until the punch head and punch head receiver are aligned.
3. Remove the punch head, holding the head with a pair of needle-nosed pliers (1 screw per head).



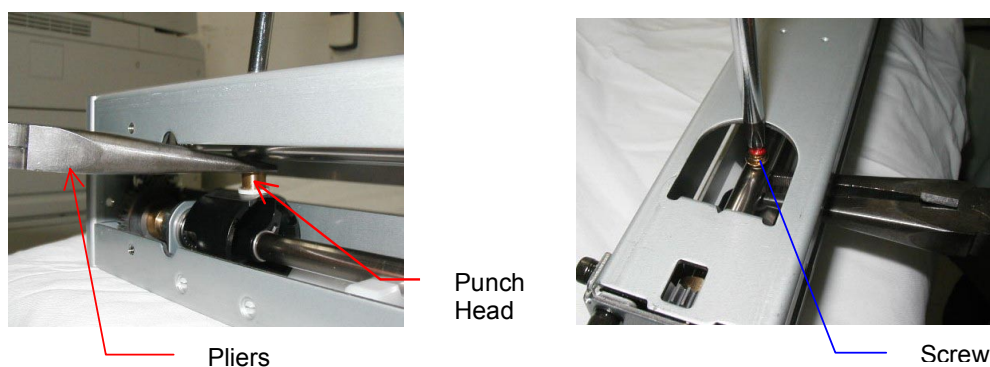
NOTE: a. Do not touch the punch head with bare hands.
b. Do not remove any other screws.



4. Insert the new punch head.



5. Secure the new punch head in place, holding it with a pair of needle-nosed pliers (1 screw).



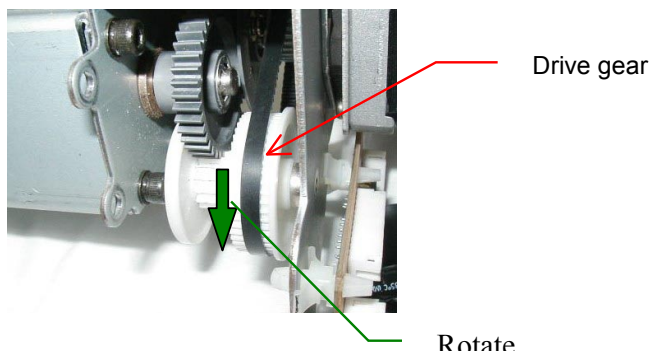
NOTE: a. Do not touch the punch head with bare hands.
b. Make sure to attach the head perpendicular (90 degrees) to the shaft.
c. Do not remove any other screws.

Model: Bellini

Date: 25-Apr-03

No.: RA294061

6. Reinstall the paper guides (4 screws).
7. Rotate the drive gear manually and confirm that the punch head/receiver mechanism functions smoothly (that the two are properly aligned with one another).



Note: Do not forcibly rotate the gear. If it is difficult to rotate, replace the entire punch unit.

Model: B-C1 Punch Unit	Date:17-Aug-09	No.: RA812001
------------------------	----------------	---------------

Subject: Punch Unit		Prepared by: T.Toriumi	
From: 2nd Tech. Support Sec. Service Support Dept.			
Classification:	<input type="checkbox"/> Troubleshooting <input type="checkbox"/> Mechanical <input type="checkbox"/> Paper path <input type="checkbox"/> Other ()	<input checked="" type="checkbox"/> Part information <input type="checkbox"/> Electrical <input type="checkbox"/> Transmit/receive	<input type="checkbox"/> Action required <input type="checkbox"/> Service manual revision <input type="checkbox"/> Retrofit information

1. PUNCH UNIT (A812)

Old part number	New part number	Description	Q'ty	Int	Page	Index	Note
A8127121	A8127171	DRIVE MOTOR BRACKET	1-1	X/X	3	8	X/O as
-	11050623	CLAMP - LBWS-0206S-V0	0-1	-	3	36	aset
A3777122	A8127127	Guide Plate:Punch (2HOLES)	2-2	X/O	3	10	-
A6067122	A8127135	Guide Plate (3HOLES)	2-2	X/O	3	10	-

Change/Reason:

To improve reliability.