

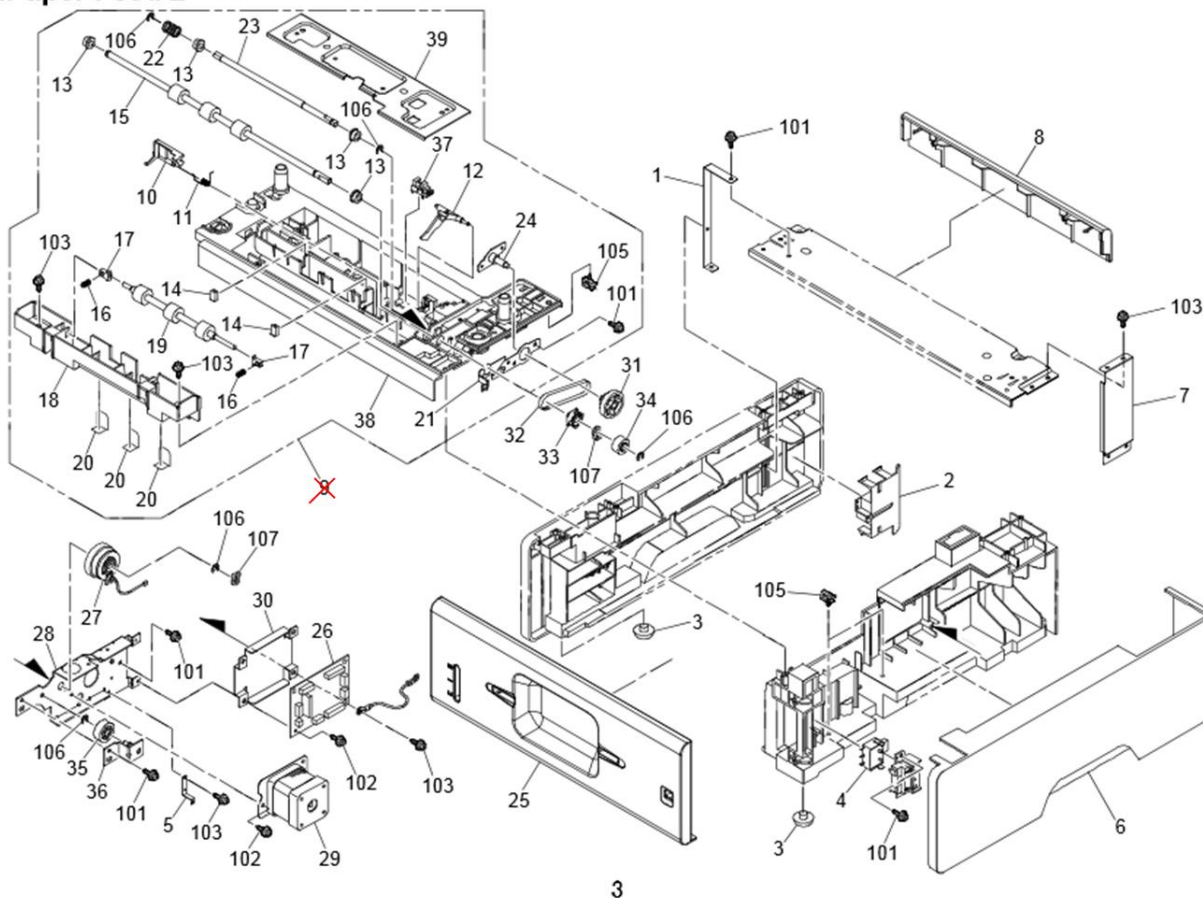
Model: GimP1/MF1 Paper Feed Unit PB1060		Date: 9-Mar-15	No.: RM4410001
Subject: Part catalog correction		Prepared by: J.Kitagawa	
From: 3rd Tech Service Sect., MFP/P Tech Service Dept.			
Classification:	<input type="checkbox"/> Troubleshooting	<input checked="" type="checkbox"/> Part information	<input type="checkbox"/> Action required
	<input type="checkbox"/> Mechanical	<input type="checkbox"/> Electrical	<input type="checkbox"/> Service manual revision
	<input type="checkbox"/> Paper path	<input type="checkbox"/> Transmit/receive	<input type="checkbox"/> Retrofit information
	<input type="checkbox"/> Product Safety	<input type="checkbox"/> Other ()	<input type="checkbox"/> Tier 2

Change: The following part was deleted. Instead, the components are available as individual service parts.

Reason: Difficulty in supplying the PFU as an assembled unit.

part number	Correct part number	Description	Q'ty	Page	Index	Note
M4406540	-	PAPER FEED UNIT:ASS'Y	1	4	9	

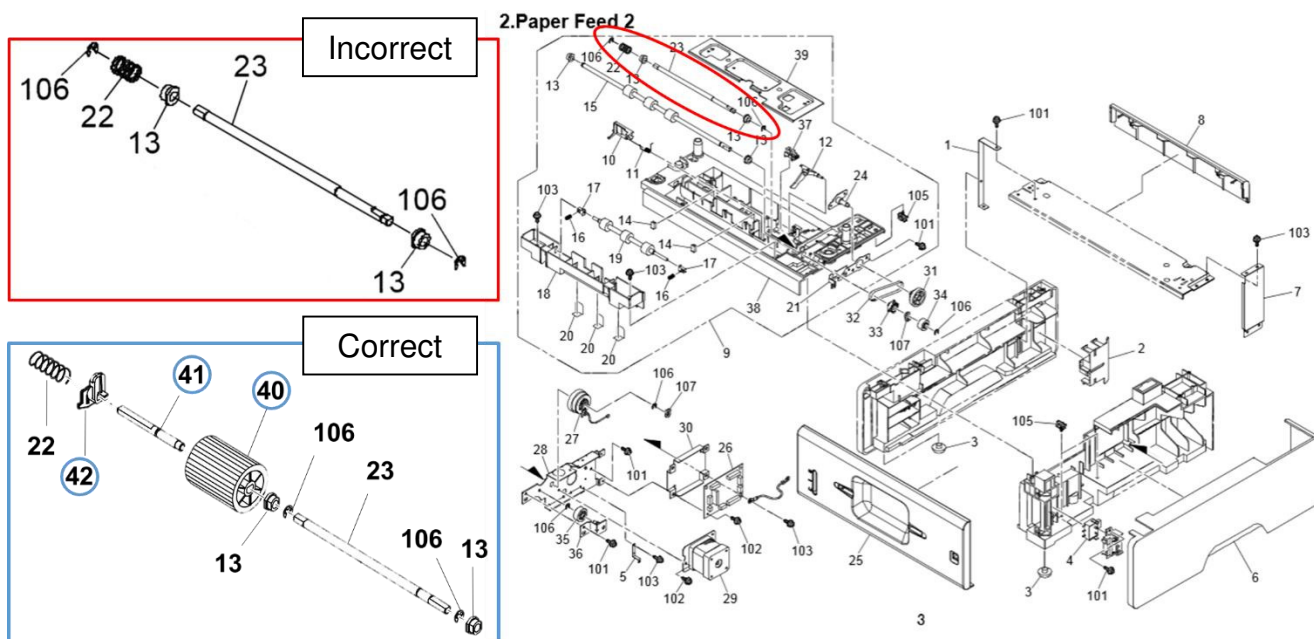
2.Paper Feed 2



Model: GimP1/MF1 Paper Feed Unit PB1060		Date: 10-Jul-15	No.: RM4400002
Subject: Part catalog correction		Prepared by: J.Kitagawa	
From: 2nd Tech Service.,MFP/P Tech Service Dept.			
Classification:	<input type="checkbox"/> Troubleshooting <input checked="" type="checkbox"/> Part information <input type="checkbox"/> Action required <input type="checkbox"/> Mechanical <input type="checkbox"/> Electrical <input type="checkbox"/> Service manual revision <input type="checkbox"/> Paper path <input type="checkbox"/> Transmit/receive <input type="checkbox"/> Retrofit information <input type="checkbox"/> Product Safety <input type="checkbox"/> Other () <input type="checkbox"/> Tier 2		

The following parts, which were missing from the parts catalog, were added. The roller assembly outlined in red was added with the parts, as outlined in blue.

Part number	Correct part number	Description	Q'ty	Page	Index	Note
-	M1602830	ROLLER:PAPER FEED:ASS'Y	1	4	40	Add
-	M1602804	SHAFT:PRESSURE RELEASE:FEED ROLLER:DIA6	1	4	41	Add
-	M1602803	LEVER:PRESSURE RELEASE:FEED ROLLER	1	4	42	Add



Model: GimP1/MF1 Paper Feed Unit HC model TE (for NA)		Date: 05-Jan-17	No.: RM440003
Subject: Parts catalog revision for HC model TE		Prepared by: Y. Gaman	
From: 2nd Tech Service Sect., MFP/P Tech Service Dept.			
Classification:	<input type="checkbox"/> Troubleshooting <input type="checkbox"/> Mechanical <input type="checkbox"/> Paper path <input type="checkbox"/> Product Safety	<input checked="" type="checkbox"/> Part information <input type="checkbox"/> Electrical <input type="checkbox"/> Transmit/receive <input type="checkbox"/> Other ()	<input type="checkbox"/> Action required <input checked="" type="checkbox"/> Service manual revision <input type="checkbox"/> Retrofit information <input type="checkbox"/> Tier 2

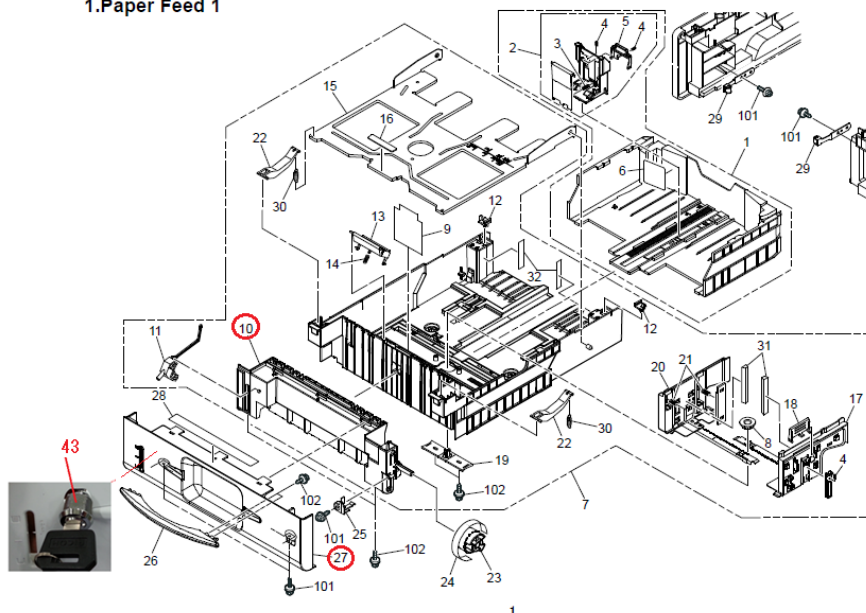
Paper Feed Unit HC models TE (M440-13/M441-13) for Gim-P1c/MF1d HC models were added to the Gim-P1/MF1 Paper Feed Unit, targeting only the NA market.

Due to this addition, the Parts Catalog for M440/M441 (Paper Feed Units PB1070/PB1060) was revised. Revisions made to the Parts Catalog are as follows.

- Parts Catalog revision (Service parts unique to M440-13/M441-13)

Section	P/N	Description	Page	Index
Paper Feed 1	M1602659	GUIDE:PAPER TRAY:500 SHEET FEED UNIT:KEY-LOCK	2	10
	M1712659	GUIDE:PAPER TRAY:250 SHEET FEED UNIT:KEY-LOCK		
	M4406509	COVER:PAPER TRAY:500:KEY-LOCK		27
	M4416509	COVER:PAPER TRAY:250:KEY-LOCK		
	M3752570	KEY:OPTION TRAY		43

1.Paper Feed 1



Note: The key (p/n: M3752570) comes with two spare keys.

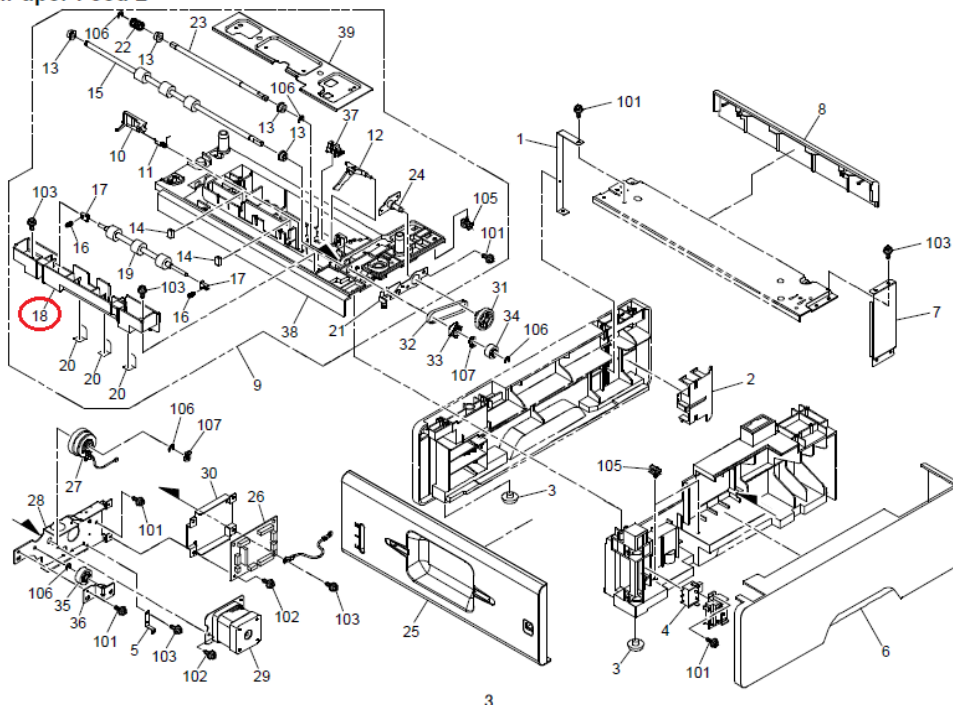
Model: GimP1/MF1 Paper Feed Unit HC model TE (for NA)

Date: 05-Jan-17

No.: RM440003

Section	P/N	Description	Page	Index
Paper Feed 2	M4406569	GUIDE:DRIVEN:TRANSPORT:KEY-LOCK	4	18

2.Paper Feed 2



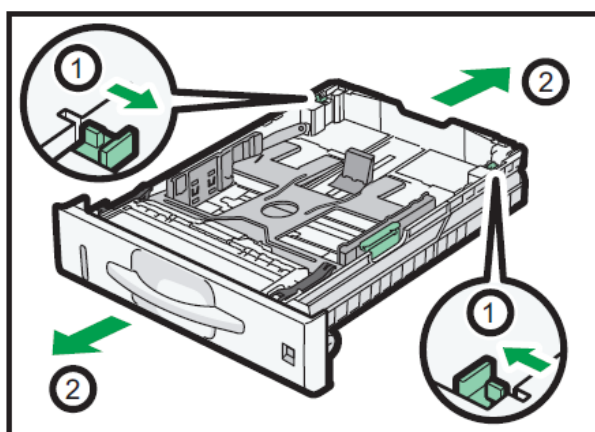
Model: Gim-P1/MF1 Paper Feed Unit PB1060		Date: 7-Feb-17	No.: RM441004
Subject: Troubleshooting for Paper No Feed		Prepared by: K.Nakano	
From: Printer Sec., MFP/P FQM Dept.			
Classification:	<input checked="" type="checkbox"/> Troubleshooting	<input checked="" type="checkbox"/> Part information	<input type="checkbox"/> Action required
	<input type="checkbox"/> Mechanical	<input type="checkbox"/> Electrical	<input type="checkbox"/> Service manual revision
	<input checked="" type="checkbox"/> Paper path	<input type="checkbox"/> Transmit/receive	<input type="checkbox"/> Retrofit information
	<input type="checkbox"/> Product Safety	<input type="checkbox"/> Other ()	<input checked="" type="checkbox"/> Tier 2 <input type="checkbox"/> Tier 0.5

SYMPTOM

“Paper No Feed” jam occurs (Jam Code: 3, 4, 5).

CAUSE

- A) The end fence may be kicked a few notches back by the loaded paper if the fence is adjusted after the paper is loaded.
- B) The end fence may be pushed back when the paper is loaded if the catches (1) do not lock the tray extension.



CXC607

Model: Gim-P1/MF1 Paper Feed Unit PB1060

Date: 7-Feb-17

No.: RM441004

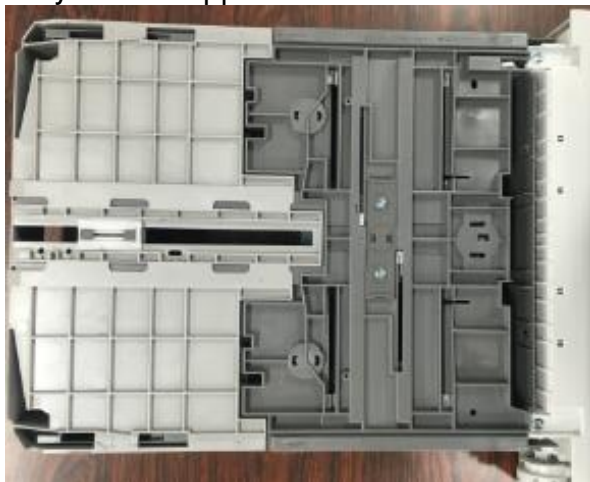
SOLUTION

For cause (A):

Advise the user to fix the position of the end fence **before** loading the paper (as mentioned in the Operator's Instructions). If the user uses only A4SEF, Letter SEF, or A5 SEF, then the end fence can be fixed in place using the following screw:

P/N	Description	Necessary Q'ty
04583010N	HEXAGON HEAD TAPPING SCREW:3X10	1

Tray shown flipped back:



Options for fixing the end fence in place:



For cause (B)

Advise the user to lock the catches and **NOT** to extend the tray when loading A4-SEF or smaller paper sizes (as mentioned in the Operator's Instructions). If the user uses only A4SEF or smaller paper sizes, then the catches can be fixed in place (both sides) using the following screws:

P/N	Description	Necessary Q'ty
04583010N	HEXAGON HEAD TAPPING SCREW:3X10	4

