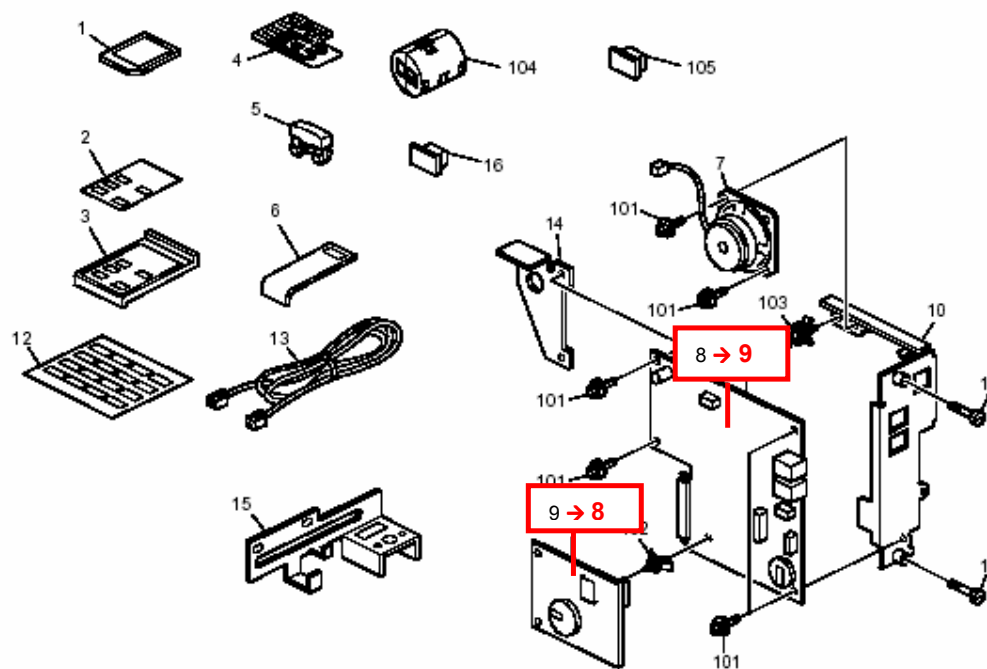


Model: K-C3 (Fax Option)		Date: 19-Jun-07	No.: MB245012
Modified Article: Parts Catalog Correction		Prepared by: M. Ishihara	
From: 1st Tech. Support Sec. Service Support Dept.			
Reason for Modification:	<input checked="" type="checkbox"/> Parts catalog correction <input type="checkbox"/> Vendor change <input type="checkbox"/> Other <input type="checkbox"/> To facilitate assembly <input type="checkbox"/> To improve reliability <input type="checkbox"/> To meet standards <input type="checkbox"/> Part standardization <input type="checkbox"/> Product Safety ()		

Please correct your parts catalog as follows.

Old part number	New part number	Description	Q'ty	Int	Page	Index	Note
B8685080	-	PCB : MBU : Ass'y	1	-	2	9→8	
B8685172	-	PCB : GWFCU3 : NA	1	-	2	8→9	
B8685174	-	PCB : GWFCU3 : EU	1	-	2	8→9	

1.Fax Option (B868)



Model: Model K-C3 Fax Option		Date: 6-Jul-07	No.: MB868001
Modified Article: Parts catalog correction		Prepared by: Y.Yoshida	
From: 1st Tech. Support Sec. Service Support Dept.			
Reason for Modification:	<input checked="" type="checkbox"/> Parts catalog correction <input type="checkbox"/> Vendor change <input type="checkbox"/> Other <input type="checkbox"/> To facilitate assembly <input type="checkbox"/> To improve reliability <input type="checkbox"/> To meet standards <input type="checkbox"/> Part standardization <input type="checkbox"/> Product Safety ()		

Change/Reason: Indexes #8 and #9 in the illustration below were corrected (swapped).

Pg. 2

