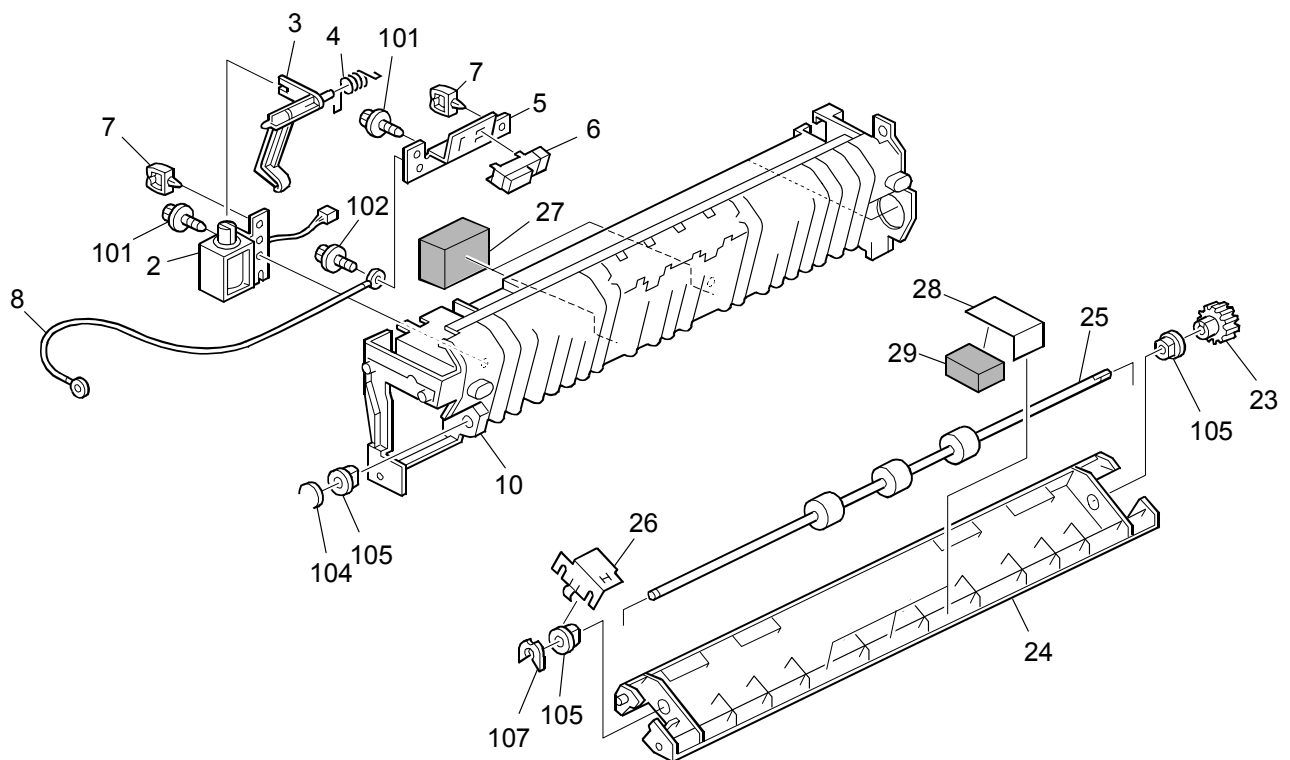


Model: R-C5 Interchange Unit		Date: 10-Aug-09	No.: RD371001
Subject: Parts Catalog Correction		Prepared by: S. Tomoe	
From: 2nd Tech Support Sec. Service Support Dept.			
Classification:	<input type="checkbox"/> Troubleshooting <input type="checkbox"/> Mechanical <input type="checkbox"/> Paper path <input type="checkbox"/> Product Safety	<input checked="" type="checkbox"/> Part information <input type="checkbox"/> Electrical <input type="checkbox"/> Transmit/receive <input type="checkbox"/> Other ()	<input type="checkbox"/> Action required <input type="checkbox"/> Service manual revision <input type="checkbox"/> Retrofit information <input type="checkbox"/> Tier 2

Please apply the following changes to your Parts Catalogs.

Old part number	New part number	Description	Q'ty	Int	Page	Index	Note
	D3714651	Cushion: Gate Reverse: Frame	2		3	27	
	D3714653	Sprint Plate: Roller: Gate	3		3	28	
	D3714652	Cushion: Reverse Roller: Frame	3		3	29	



Model: Interchange Unit (D371)		Date: 17-Nov-11	No.: RD371002
Subject: Parts Catalog Correction (Timing belt)		Prepared by: T. Nihei	
From: 2nd Tech Service Sect., MFP/P Tech Service Dept.			
Classification:	<input type="checkbox"/> Troubleshooting <input type="checkbox"/> Mechanical <input type="checkbox"/> Paper path <input type="checkbox"/> Product Safety	<input checked="" type="checkbox"/> Part information <input type="checkbox"/> Electrical <input type="checkbox"/> Transmit/receive <input type="checkbox"/> Other ()	<input type="checkbox"/> Action required <input type="checkbox"/> Service manual revision <input type="checkbox"/> Retrofit information <input type="checkbox"/> Tier 2

Please apply the following P/N correction to your Parts Catalogs.

Incorrect Part Number	Correct Part Number	Description	Q'ty	Int	Page	Index	Note
AA043524	AA043648	SYNCHRONOUS BELT:S3M:150			3	17	