

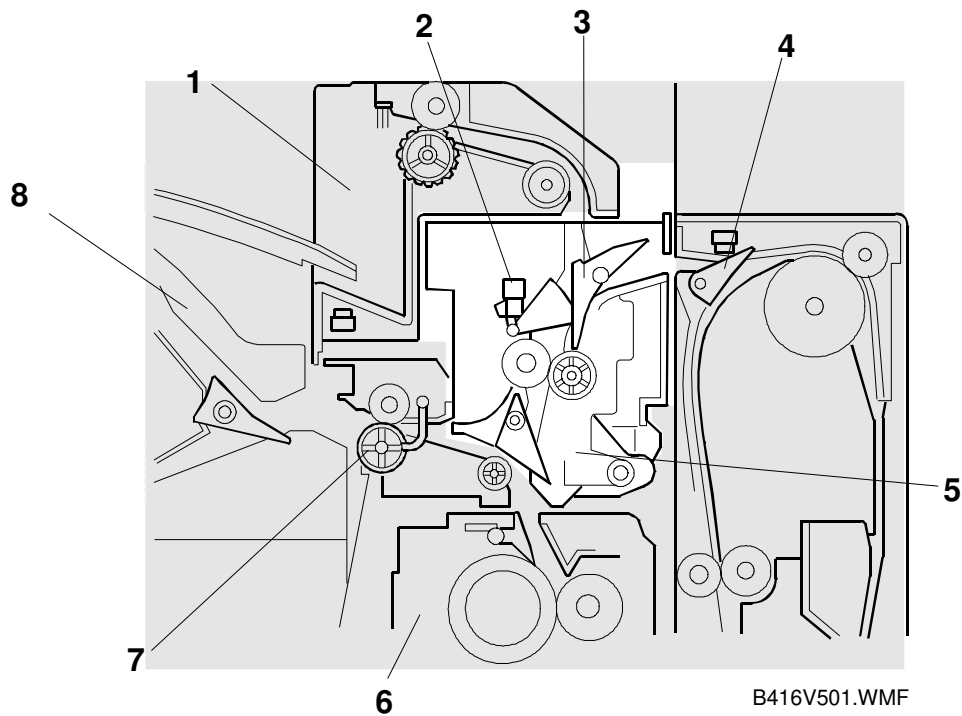
INTERCHANGE UNIT
(Machine Code: B300/B416)

1. OVERALL MACHINE INFORMATION

1.1 SPECIFICATIONS

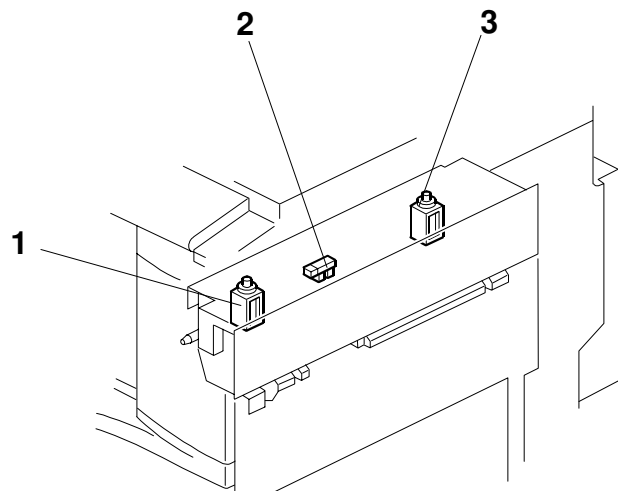
Paper Size:	Standard sizes A6 lengthwise to A3 HLT to DLT Non-standard sizes Width: 100 to 305 mm Length: 148 to 432 mm
Paper Weight:	52 g/m ² ~ 135 g/m ² , 16 lb ~ 36 lb
Power Consumption:	15 W
Dimensions (W x D x H):	117 x 447 x 92 mm
Weight:	1.6 kg

1.2 MECHANICAL COMPONENT LAYOUT

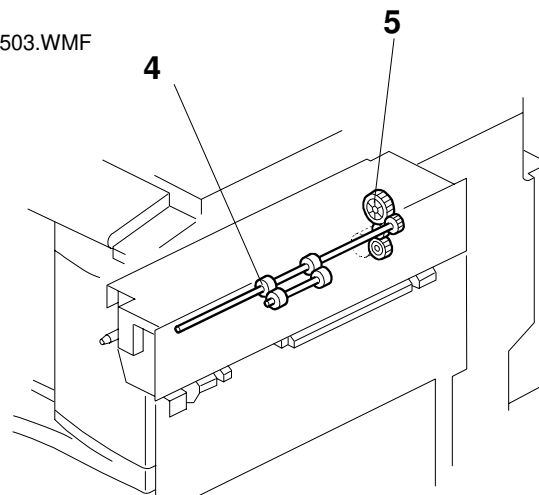


1. 1-bin Tray (Option)
2. Exit Sensor
3. Duplex Junction Gate
4. Duplex Unit (Option)
5. Exit Junction Gate
6. Fusing Unit (Inside the Copier)
7. Exit Roller
8. Bridge Unit

1.3 DRIVE LAYOUT



B416V503.WMF

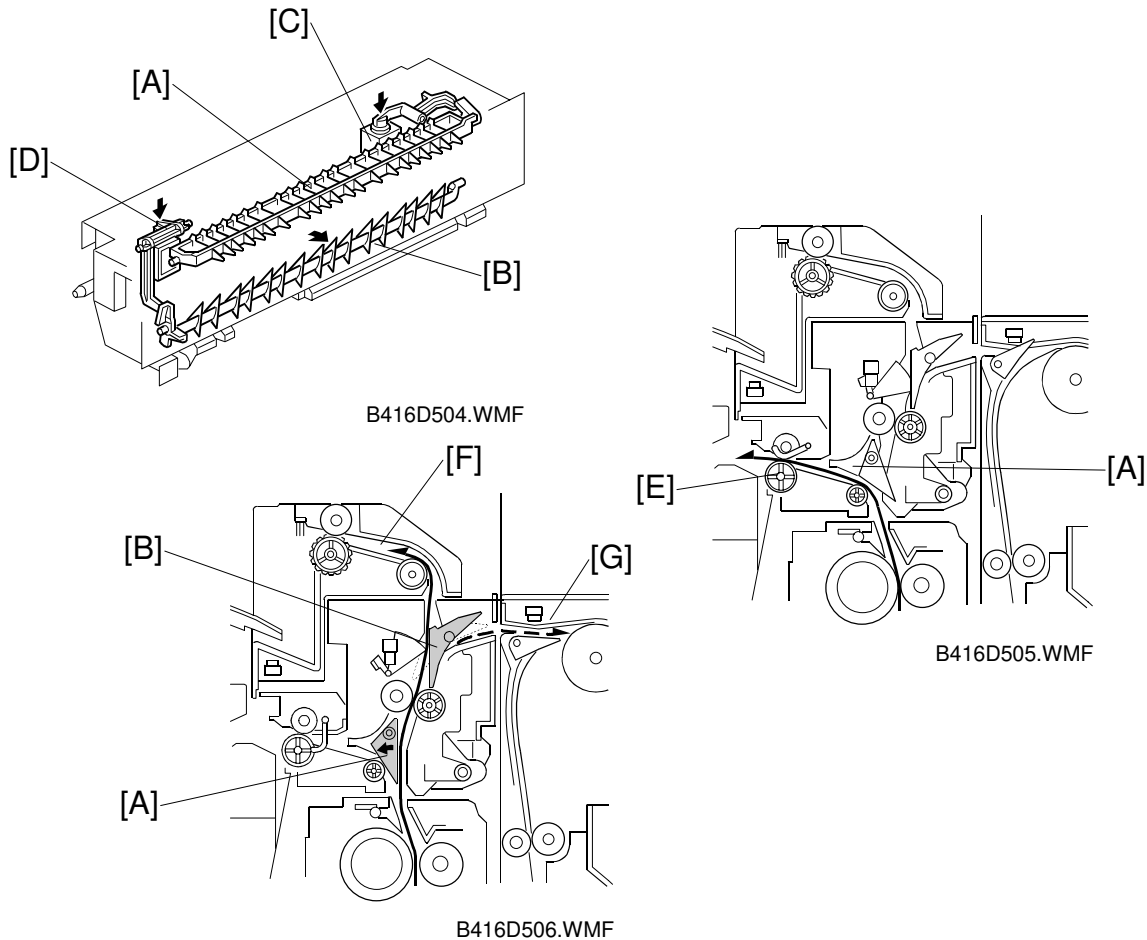


B416V504.WMF

- | | |
|----------------------------------|----------------|
| 1. Exit Junction Gate Solenoid | 4. Exit Roller |
| 2. Exit Sensor | 5. Drive Gear |
| 3. Duplex Junction Gate Solenoid | |

2. DETAILED DESCRIPTION

2.1 JUNCTION GATE MECHANISM



Depending on the selected mode, the copies are directed up, left, or right by the exit junction gate [A] and the duplex junction gate [B]. These are controlled by the exit junction gate solenoid [C] and the duplex junction gate solenoid [D].

To the Exit Tray or Bridge Unit (for the Upper Tray on top of the Bridge Unit, or the Finisher)

The exit junction gate solenoid stays off and the paper is directed to the copier exit unit [E].

To the 1-bin Tray

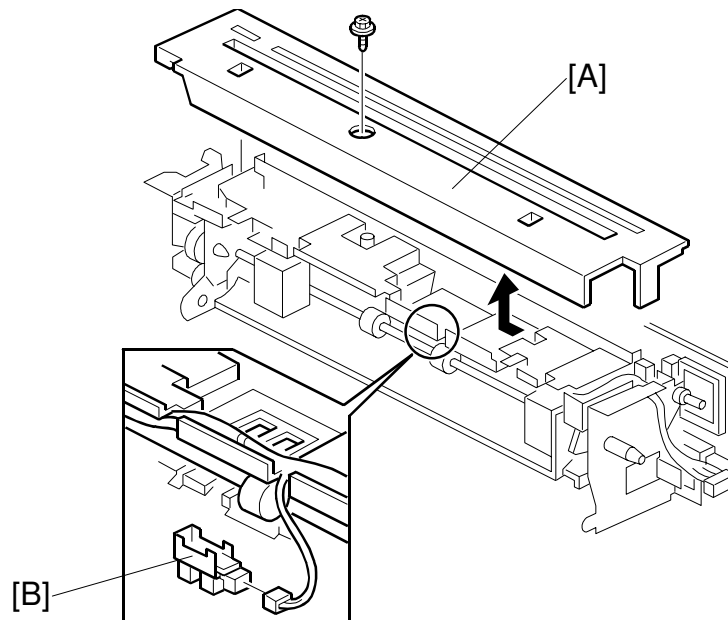
The exit junction gate solenoid turns on and the duplex junction gate solenoid stays off. The paper is directed to the 1-bin tray [F].

To the Duplex Unit

The exit junction gate solenoid and the duplex junction gate solenoid both turn on and the paper is directed to the duplex unit [G].

3. REPLACEMENT AND ADJUSTMENT

3.1 EXIT SENSOR REPLACEMENT



B416R501.WMF

1. Remove the interchange unit.
2. Remove the upper cover [A] of the interchange unit.
3. Remove the exit sensor [B] (1 connector).