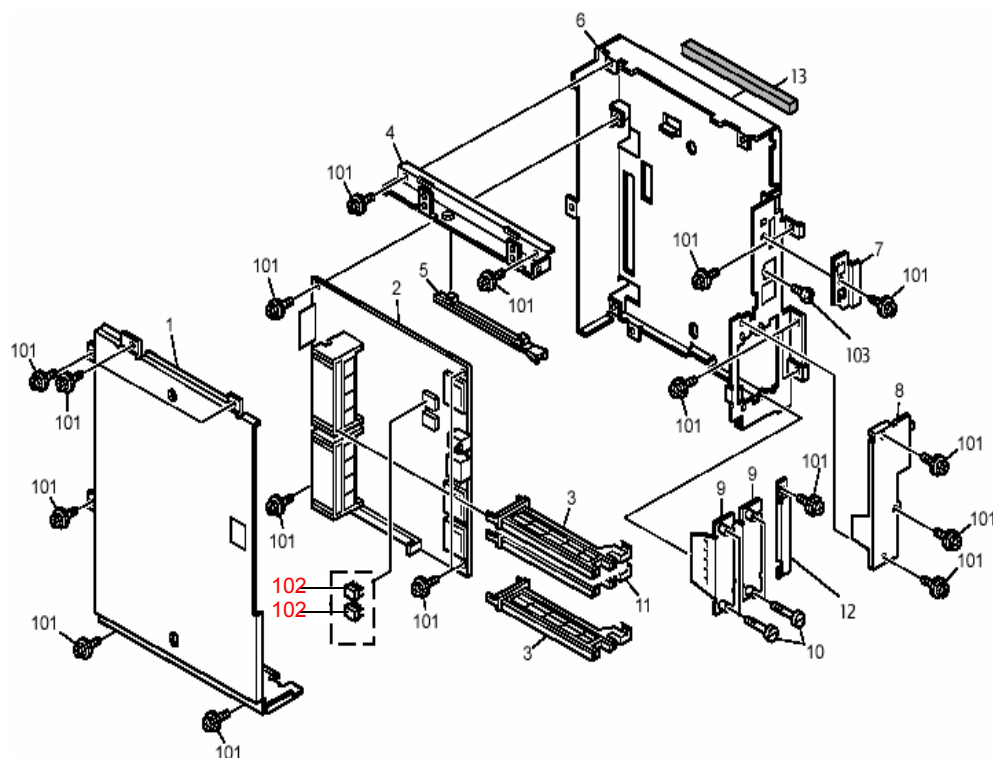


Model: Kir-C3 GW Expansion Unit (B84317)		Date: 19-Sep-07	No.: MB867001
Modified Article: Parts Catalog Correction		Prepared by: Y.Yoshida	
From: 1 <sup>st</sup> Tech. Support Sec. Service Support Dept.			
Reason for Modification:	<input checked="" type="checkbox"/> Parts catalog correction <input type="checkbox"/> To facilitate assembly <input type="checkbox"/> Part standardization	<input type="checkbox"/> Vendor change <input type="checkbox"/> To improve reliability <input type="checkbox"/> Other	<input type="checkbox"/> To meet standards (      )

Please correct your Parts Catalogs as follows:

Page4

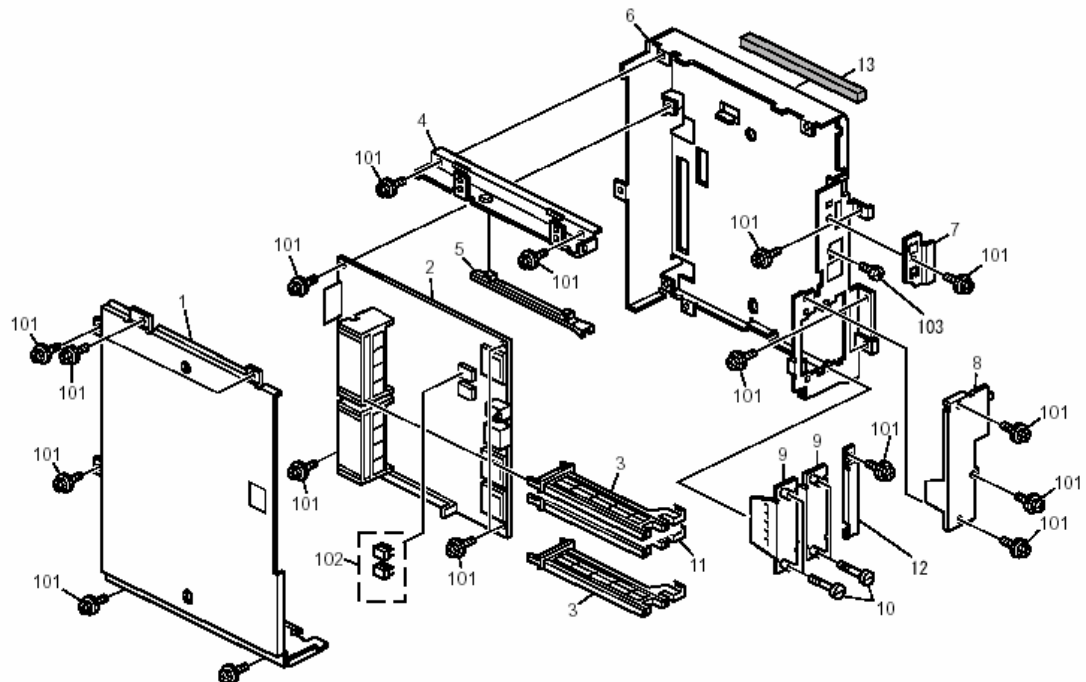


Model: Kir-C3 GW Expansion Unit		Date: 18-Mar-08	No.: MB867002
Modified Article: Part number correction		Prepared by: Y.Yoshida	
From: 1st Tech. Support Sec. Service Support Dept.			
Reason for Modification:	<input checked="" type="checkbox"/> Parts catalog correction <input type="checkbox"/> Vendor change <input type="checkbox"/> Other <input type="checkbox"/> To facilitate assembly <input type="checkbox"/> To improve reliability <input type="checkbox"/> To meet standards <input type="checkbox"/> Part standardization <input type="checkbox"/> Product Safety    (      )		

**Change:** The Controller software was changed.

**Reason:** To increase the reliability of the Controller Board (to ensure SC820 does not occur).

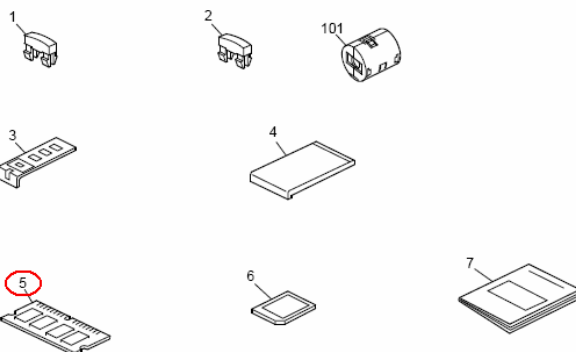
Old Part	NEW Part	Description	Q'ty	Int	Page	Index	Note
B8435727	B8435728	PCB:Type-DM:K-C3:Ass'y	1→1	O/O	5	2	



Model: Kir-C3 Printer/Scanner Unit Type2000		Date: 2-Sep-08	No.: MB867003
Modified Article: Part number correction		Prepared by: Y.Yoshida	
From: 1st Tech. Support Sec. Service Support Dept.			
Reason for Modification:	<input checked="" type="checkbox"/> Parts catalog correction <input type="checkbox"/> Vendor change <input type="checkbox"/> Other <input type="checkbox"/> To facilitate assembly <input type="checkbox"/> To improve reliability <input type="checkbox"/> To meet standards <input type="checkbox"/> Part standardization <input type="checkbox"/> Product Safety    (      )		

**Change/Reason:** Parts catalog correction

Old Part	NEW Part	Description	Q'ty	Int	Page	Index	Note
G3325730	G3325750	PCB:SDRAM-DIMM:256MB:CHN_SH:A SS'Y	1→1		3	5	





Part Change Information List

Date: May 31, 2010

Model	Code	PCIL Nr.	PCIL Correction	Old part number	New part number	Description	Old Q'ty	New Q'ty	Int	3DPC	Page	Index	Set	Set Int	RTB	Note	Ref. Nr.	ECN Nr.
Feature Expansion Board Type 2000	B843	201005		B8435728	B8435729	PCB:TYPE-DM:K-C3:ASS'Y	1	1	O/O		5	2					V0903304	9120863



Part Change Information List

Date: November 30, 2010

Model	Code	PCIL Nr.	PCIL Correctio	Old part number	New part number	Description	Old Q'ty	New Q'ty	Int	3DPC	Page	Index	Set	Set Int	RTB	Note	Ref. Nr.	ECN Nr.
K-C3 Feature Expansion Board Type 2000	B843	201011		19070013	19070073	SDRAM:256M:4MX16X4:133MHZ:G8	4	4	X/O		15	242					T0702247	6080735
K-C3 Feature Expansion Board Type 2000	B843	201011		19070073	19070131	SDRAM:256M:4MX16X4:133MHZ:G14	4	4	O/O		15	242					V1002463	10100514



Part Change Information List

Date: August 3, 2015

Model	Code	PCIL Number	PCIL Correction	Old part number	New part number	Description	Old Q'ty	New Q'ty	Int	3DPC	Page	Index	Set	Set Int	RTB	Note	Ref Number	ECN Number
K-C3	B843	201507		B2291551		KEYTOP - DIAL		---	O/O	N	3	16			Y		V1304328	