

Model: Neptune-C2 Folder FD6500A		Date: 21-Sep-07	No.: MB889001
Modified Article: Power Supply Cord		Prepared by: F.Noguchi	
From: 2nd Tech. Support Sec. Service Support Dept.			
Reason for Modification:	<input type="checkbox"/> Parts catalog correction <input type="checkbox"/> Vendor change <input type="checkbox"/> Other <input type="checkbox"/> To facilitate assembly <input type="checkbox"/> To improve reliability <input checked="" type="checkbox"/> To meet standards <input type="checkbox"/> Part standardization <input type="checkbox"/> Product Safety ()		

Old part number	New part number	Description	Q'ty	Int	Page	Index	Note
B2865734		Power Supply Cord: Stopper: 120V	1 - 1	X/O	31	33	
	B2865767	Power Supply Cord - 120V					
B2865496	B2865765	Power Supply Cord: 230V	1 - 1	X/O	31	33	

Change: The material of the harnesses, power supply cord was changed.

Reason: To comply with the revised URL standards.

MODEL NAME	V/Hz	DESTINATION	CODE	SERIAL NO.
Folder FD6500A	120/60	USA, Canada, S. America	B889-17	M3470800009
Folder FD6500A	220-240/50, 60	Europe, Asia, Oceania, etc	B889-27	M3470500001

Model: Neptune-C2 Folder FD6500A		Date: 21-Sep-07	No.: MB889002
Modified Article: Guide Plate Drive		Prepared by: F.Noguchi	
From: 2nd Tech. Support Sec. Service Support Dept.			
Reason for Modification:	<input type="checkbox"/> Parts catalog correction <input type="checkbox"/> Vendor change <input type="checkbox"/> Other <input type="checkbox"/> To facilitate assembly <input type="checkbox"/> To improve reliability <input type="checkbox"/> To meet standards <input checked="" type="checkbox"/> Part standardization <input type="checkbox"/> Product Safety ()		

Old part number	New part number	Description	Q'ty	Int	Page	Index	Note
B8891269	B8891281	Guide Plate: Drive	1 - 1	O/O	27	18	

Change/ Reason: Due to part standardization with new model.

Model: N-C2 Folder FD6500A		Date: 6-Nov-07	No.: MB889003
Modified Article: Tension Spring		Prepared by: F.Noguchi	
From: 2nd Tech. Support Sec. Service Support Dept.			
Reason for Modification:	<input type="checkbox"/> Parts catalog correction <input type="checkbox"/> Vendor change <input type="checkbox"/> Other <input type="checkbox"/> To facilitate assembly <input checked="" type="checkbox"/> To improve reliability <input type="checkbox"/> To meet standards <input type="checkbox"/> Part standardization <input type="checkbox"/> Product Safety ()		

Old part number	New part number	Description	Q'ty	Int	Page	Index	Note
A1841748	AA060842	Tension Spring	1 - 1	X/O	7	16	

Change: The tension of the tension spring was increased from 1.4N to 4.2N.

Reason: To further improve the function of the lock bar on the bridge unit (the lock strength is increased).

MODEL NAME	V/Hz	DESTINATION	CODE	SERIAL NO.
Folder FD6500A	120/60	USA, Canada, S. America	B889-17	M34711XXXXX
Folder FD6500A	220-240/50, 60	Europe, Asia, Oceania, etc	B889-27	M3471000001

Model: Neptune-C2 Folder FD6500A		Date: 14-Dec-07	No.: MB889004
Modified Article: Roller: Driven		Prepared by: F.Noguchi	
From: 2nd Tech. Support Sec. Service Support Dept.			
Reason for Modification:	<input type="checkbox"/> Parts catalog correction <input type="checkbox"/> Vendor change <input type="checkbox"/> Other <input type="checkbox"/> To facilitate assembly <input checked="" type="checkbox"/> To improve reliability <input type="checkbox"/> To meet standards () <input type="checkbox"/> Part standardization <input type="checkbox"/> Product Safety		

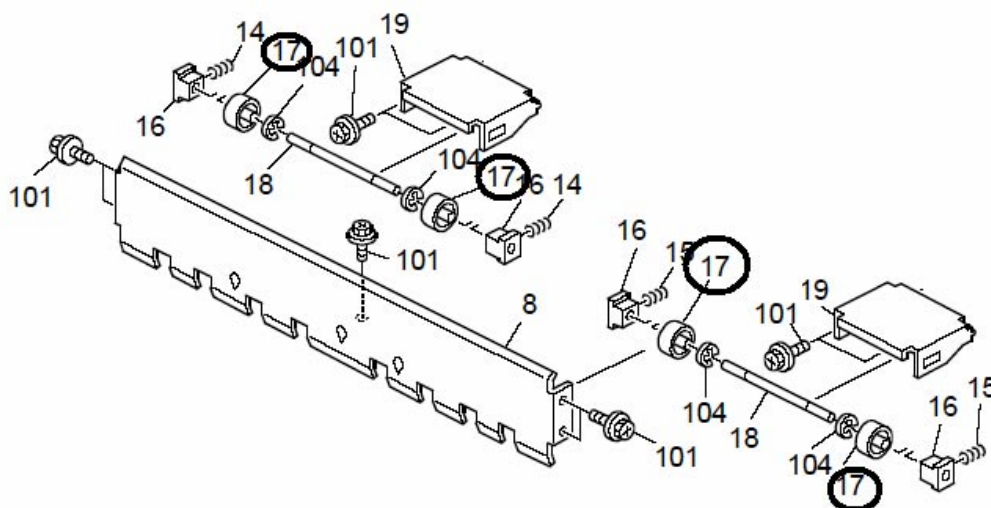
Old part number	New part number	Description	Q'ty	Int	Page	Index	Note
B1254752	B8891356	Roller: Driven	4 - 4	X/O	15	17	*

Change: The edges of the roller were made smoother.

Reason: To further ensure that the edges do not cause black lines on the copy paper.

Note:

- Service Parts: This change was also applied to the old rollers (B1254752) before they were shipped out from SPC Japan.
- Machine production line: The new roller is installed in all machines, from the beginning of mass-production.
- The old roller is white, and the new roller is black.



MODEL NAME	V/Hz	DESTINATION	CODE	SERIAL NO.
Folder FD6500A	120/60	USA, Canada, S. America	B889-17	M34708xxxxx
Folder FD6500A	220-240/50, 60	Europe, Asia, Oceania, etc	B889-27	M3470700001

Model: Neptune-C2 Folder FD6500A		Date: 12-Feb-08	No.: MB889005
Modified Article: Braket: Sensor: 1		Prepared by: F.Noguchi	
From: 2nd Tech. Support Sec. Service Support Dept.			
Reason for Modification:	<input checked="" type="checkbox"/> Parts catalog correction <input type="checkbox"/> Vendor change <input type="checkbox"/> Other <input type="checkbox"/> To facilitate assembly <input type="checkbox"/> To improve reliability <input type="checkbox"/> To meet standards <input type="checkbox"/> Part standardization <input type="checkbox"/> Product Safety ()		

	Part umber	Description	Q'ty	Page	Index	Note
Incorrect	B8891178	BRACKET: SENSOR: 1	1	7	36	
			1	11	6	
			1	27	28	
Correct	B8891398	BRACKET: SENSOR: CONNECTING	1	7	36	
	B8891178	BRACKET: SENSOR: 1	1	11	6	
			1	27	28	

Change/Reason: Parts catalog correction

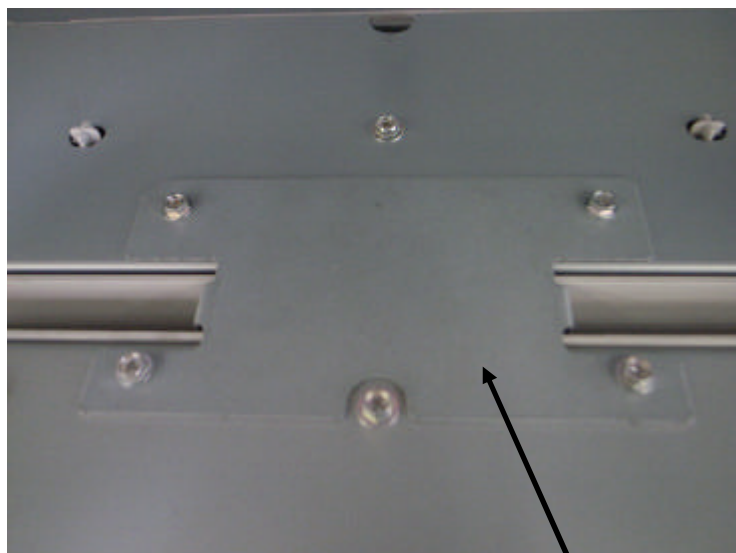
Model: Neptune-C2 Folder FD6500A		Date: 27-Feb-08	No.: MB889006
Modified Article: Bracket: Cover: Coupling		Prepared by: F.Noguchi	
From: 2nd Tech. Support Sec. Service Support Dept.			
Reason for Modification:	<input type="checkbox"/> Parts catalog correction <input type="checkbox"/> Vendor change <input type="checkbox"/> Other <input type="checkbox"/> To facilitate assembly <input checked="" type="checkbox"/> To improve reliability <input type="checkbox"/> To meet standards <input type="checkbox"/> Part standardization <input type="checkbox"/> Product Safety ()		

New part number	Description	Q'ty	Page	Index
B8891399	BRACKET:COVER:COUPLING	0 - 3	5	25
04513006N	Tapping Screw – 3x6	n – n+12	5	101

Change: A bracket coupling was added to the middle of the “Cover: Open and Close”.

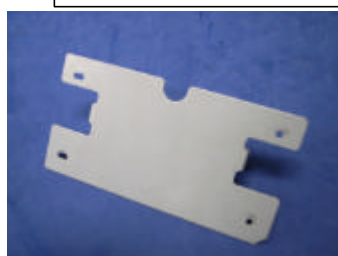
Reason: To ensure that the cover cap stays attached when the door is opened/closed with force.

MODEL NAME	V/Hz	DESTINATION	CODE	SERIAL NO.
Folder FD6500A	120/60	USA, Canada, S. America	B889-17	M34712xxxxx
Folder FD6500A	220-240/50, 60	Europe, Asia, Oceania, etc	B889-27	M3471100001



Middle area of the “Cover: Open and Close” (P/N: B8891905)

Bracket: Cover: Coupling



Model: Neptune-C2 Folder FD6500A		Date: 3-Apr-08	No.: MB889007
Modified Article: Bracket: Pressure: Transport: Lower		Prepared by: F.Noguchi	
From: 2nd Tech. Support Sec. Service Support Dept.			
Reason for Modification:	<input type="checkbox"/> Parts catalog correction <input type="checkbox"/> Vendor change <input type="checkbox"/> Other <input type="checkbox"/> To facilitate assembly <input type="checkbox"/> To improve reliability <input type="checkbox"/> To meet standards <input checked="" type="checkbox"/> Part standardization <input type="checkbox"/> Product Safety ()		

Old part number	New part number	Description	Q'ty	Int	Page	Index	Note
B8891537	B8891550	Cover: Connecting: Upper	1 – 1	O/O	3	25	
B8891520	B8891519	Guide Plate: Connecting: Lower	1 – 1	O/O	7	1	
B8891525	B8891565	Bracket: Connecting: LEFT: Ass'y	1 – 1	O/O	7	26	
B8891530	B8891568	Bracket: Connecting: Right: Ass'y	1 – 1	O/O	7	27	
B8891538	B8891549	COVER: Connecting: Lower	1 – 1	O/O	7	28	
B8891149	B8891143	Bracket: Pressure: Transport: Lower	2 – 2	O/O	13	28	

Change/ Reason: Parts standardization with the new model.

Model: Neptune-C2 Folder FD6500A		Date: 30-Jun-08	No.: MB889008
Modified Article: Cover: Front Lower and Upper		Prepared by: F.Noguchi	
From: 2nd Tech. Support Sec. Service Support Dept.			
Reason for Modification:	<input type="checkbox"/> Parts catalog correction <input type="checkbox"/> Vendor change <input type="checkbox"/> Other <input type="checkbox"/> To facilitate assembly <input type="checkbox"/> To improve reliability <input type="checkbox"/> To meet standards <input checked="" type="checkbox"/> Part standardization <input type="checkbox"/> Product Safety ()		

Old part number	New part number	Description	Q'ty	Int	Page	Index	Note
B8891921		COVER: FRONT LOWER	1 - 1	X/O	3	19	
	B8891918	COVER: FRONT LOWER: NEP: ASS'Y					
B8891922		COVER: FRONT UPPER	1 - 1	X/O	5	7	
	B8891923	COVER: FRONT UPPER: NEP: ASS'Y					

Change/Reason: Parts standardization with the new model.

MODEL NAME	V/Hz	DESTINATION	CODE	SERIAL NO.
Folder FD6500A	120/60	USA, Canada, S. America	B889-17	M34807XXXXX
Folder FD6500A	220-240/50, 60	Europe, Asia, Oceania, etc	B889-27	M34807XXXXX

Model: Folder FD6500A for N-C2/Be-C1		Date: 7-Oct-08	No.: MB889009
Modified Article: Parts Catalog		Prepared by: F.Noguchi	
From: 2nd Tech. Support Sec. Service Support Dept.			
Reason for Modification:	<input type="checkbox"/> Parts catalog correction <input type="checkbox"/> Vendor change <input checked="" type="checkbox"/> Other <input type="checkbox"/> To facilitate assembly <input type="checkbox"/> To improve reliability <input type="checkbox"/> To meet standards <input checked="" type="checkbox"/> Part standardization <input type="checkbox"/> Product Safety ()		

Change/Reason: Parts standardization with the new model.

Note: These changes are included in the Folder FD6500A Parts Catalog revision for the N-C2/Be-C1. The Parts Catalog was revised due to the release of the Be-C1.

*1: These items are corrected from the previous parts catalog.

Old part number	New part number	Description	Q'ty	Int	Page	Index	Note
B8891918		Cover: Front Lower: NEP: Ass'y	1 - 1	X/O	3	19	
	B8901918	Cover: Front Lower: BEL: Ass'y					
	B8891981	Holder: Film	0 - 1		3	44	*1
B8891923		Cover: Front Upper: NEP: Ass'y	1 - 1	X/O	5	7	
	B8801923	Cover: Front Upper: BEL: Ass'y					
B8891681	B8891678	Decal: Paper Jam: 1	1 - 1	X/O	3 5 9 11 13 33	24 18 30 14 22 4	
	D0462787	Cover: Side Plate	0 - 1		5	25	
B8895558		Harness: DC: Safety Switch	1 - 1	X/O	7	20	
	B8895577	Harness: DC: Safety Switch: Connecting					
	AA143828	Screw: Fly Wheel	0 - 1		7	46	
A1744372		Gate Pawl Drive	1 - 1	X/O	9	6	
	B8891199	Pawl: Drive					
	B8891446	Guide: Exit: Upper	0 - 8		9	32	
	AA120118	Paper Feed Discharge Brush	0 - 2		11	26	*1
	B8891966	Film: Cover: Open and Close: Left and Right	0 - 2		11	27	
	B8891982	Wire: Stopper: Guide Plate	0 - 2		13	35	
	B1254722	Sheet: Side Fence: Small	0 - 3				
B8891340	B8891309	Guide: Paper Crimp	2 - 2	X/O	17	8	*1
B8891330		Bracket: Sensor: Guide: 1	1 - 1	X/O	17	16	
	B8891328	Bracket: Sensor: 1					
B8891331		Bracket: Sensor: Guide: 2	1 - 1	X/O	17	17	
	B8891329	Bracket: Sensor: 2					
B8891343		Cushion: Guide	6 - 0		17	19	*1
	B8891252	Timing Pulley: 34T	0 - 2		19	29	*1
	B3523170	Spacer	0 - 2		19	30	*1
	B8891299	Guide: Paper Crimp: Lower	0 - 3		23	15	*1
B8891265	B8901286	DC Stepper Motor: Paper Crimp: 17.5W	1 - 1	X/O	27	13	
	B8901274	DC Motor Unit: Paper Crimp: 17.5W	0 - 1		27	44	



Model: Folder FD6500A for N-C2/Be-C1	Date: 7-Oct-08	No.: MB889009
--------------------------------------	----------------	---------------

Old part number	New part number	Description	Q'ty	Int	Page	Index	Note
B8895541		Harness: DC: Mechanical Drive	1 - 1	X/O	31	19	
	B8905571	Harness: DC: Mechanical Drive Section					
B8895540	B8905569	Harness: DC: Sensor	1 - 1	X/O	31	20	
B8895544	B8905568	Harness: DC: Power Source	1 - 1	X/O	31	21	
B8895210		PCB: MCU-J: Ass'y	1 - 1	X/O	31	22	
	B8905216	PCB: MCU-J: Exp: Ass'y					
B8895501	B8895504	Harness: AC	1 - 1	X/O	31	29	

Note: Items marked “*1” above are corrections applied from the previous Parts Catalog.

MODEL NAME	V/Hz	DESTINATION	CODE	SERIAL NO.
Folder FD6500A	120/60	USA, Canada, S. America	B889-17	M34810XXXXX
Folder FD6500A	220-240/50, 60	Europe, Asia, Oceania, etc	B889-27	M34810XXXXX

Model: Folder FD6500A for N-C2/Be-C1		Date: 8-Dec-08	No.: MB889010
Modified Article: Operating Instructions: NA		Prepared by: F.Noguchi	
From: 2nd Tech. Support Sec. Service Support Dept.			
Reason for Modification:	<input type="checkbox"/> Parts catalog correction <input type="checkbox"/> Vendor change <input type="checkbox"/> Other <input type="checkbox"/> To facilitate assembly <input type="checkbox"/> To improve reliability <input type="checkbox"/> To meet standards () <input checked="" type="checkbox"/> Part standardization <input type="checkbox"/> Product Safety		

Old part number	New part number	Description	Q'ty	Int	Page	Index	Note
B8897504		Operating Instructions: NA	1 - 1	X/O	3	40	
	B8898504	Operating Instructions: NA: FD6500A					
	B1254722	Sheet: Side Fence: Small	0 - 2		25	25	*1
B2865765		Power Supply Cord - 220V	1 - 1	X/O	31	33	*1
	B2575496	Power Supply Cord: 230V					

Change/Reason: Parts standardization with the new model.

Note: These changes are included in the Folder FD6500A Parts Catalog revision for the N-C2/Be-C1. The Parts Catalog was revised due to the release of the Be-C1.

Note: Items marked “*1” above are corrections applied from the previous Parts Catalog.

MODEL NAME	V/Hz	DESTINATION	CODE	SERIAL NO.
Folder FD6500A	120/60	USA, Canada, S. America	B889-17	M34901XXXXX
Folder FD6500A	220-240/50, 60	Europe, Asia, Oceania, etc	B889-27	M34901XXXXX

Model: Folder FD6500A for N-C2/Be-C1		Date: 26-Feb-09	No.: MB889011
Modified Article: Operating Instructions: NA		Prepared by: F.Noguchi	
From: 2nd Tech. Support Sec. Service Support Dept.			
Reason for Modification:	<input type="checkbox"/> Parts catalog correction <input checked="" type="checkbox"/> Vendor change <input type="checkbox"/> Other <input type="checkbox"/> To facilitate assembly <input type="checkbox"/> To improve reliability <input type="checkbox"/> To meet standards <input checked="" type="checkbox"/> Part standardization <input type="checkbox"/> Product Safety ()		

Old part number	New part number	Description	Q'ty	Int	Page	Index	Note
B8898504	B8908504	Operating Instructions: NA: FD6500A	1 - 1	X/O	3	40	

Change: The part number was changed.

Reason: To conform to a part number management change applied by the vendor.

Model: Folder FD6500A for N-C2/Be-C1		Date: 26-Feb-09	No.: MB889012
Modified Article: Decal: Paper Jam: 1		Prepared by: F.Noguchi	
From: 2nd Tech. Support Sec. Service Support Dept.			
Reason for Modification:	<input type="checkbox"/> Parts catalog correction <input type="checkbox"/> Vendor change <input type="checkbox"/> Other <input type="checkbox"/> To facilitate assembly <input type="checkbox"/> To improve reliability <input type="checkbox"/> To meet standards <input checked="" type="checkbox"/> Part standardization <input type="checkbox"/> Product Safety ()		

1. DECAL: PAPER JAM: 1

Old part number	New part number	Description	Q'ty	Int	Page	Index	Note
B8891678	B8891679	DECAL: PAPER JAM: 1	1 - 1	X/O	3 5 9 11 13 33	24 18 30 14 22 4	

Change/Reason: The size of the decals was changed for use on the Be-C1.

MODEL NAME	V/Hz	DESTINATION	CODE	SERIAL NO.
Folder FD6500A	120/60	USA, Canada, S. America	B889-17	M34903xxxxx
Folder FD6500A	220-240/50, 60	Europe, Asia, Oceania, etc	B889-27	M34903xxxxx

2. DECAL: OPERATE

Old Part Number	New Part Number	Description	Q'ty	Page	Index	Note
B8891680		DECAL: OPERATE	1 - 0	3 33	18 3	

Change: This part was deleted.

Reason: Parts Catalog error.



Part Change Information List

Date: Aug 31, 2010

Model	Code	PCIL Nr.	PCIL Correctio	Old part number	New part number	Description	Old Q'ty	New Q'ty	Int	3DPC	Page	Index	Set	Set Int	RTB	Note	Ref. Nr.	ECN Nr.
N-C2 Folder FD6500A	B889	201008		11071192	11071286	FUSE:BJS2022F1	1	1	O/O		31	113					V1000643	10031115



Part Change Information List

Date: April 1, 2015

Model	Code	PCIL Number	PCIL Correction	Old part number	New part number	Description	Old Q'ty	New Q'ty	Int	3DPC	Page	Index	Set	Set Int	RTB	Note	Ref Number	ECN Number
N-C2 Folder FD6500A	B889	201503		B2575496	B2865765	POWER SUPPLY CORD - 220V	1	1	X/O	N	30	33					V1500632	



Part Change Information List

Date: June 4, 2015

Model	Code	PCIL Number	PCIL Correction	Old part number	New part number	Description	Old Q'ty	New Q'ty	Int	3DPC	Page	Index	Set	Set Int	RTB	Note	Ref Number	ECN Number
N-C2 Folder FD6500A	B889	201505		AA063956	IAA063959	COMPRESSION SPRING:DRIVEN:6.6N	4	4	O/O	N	15	14					V1403107	



Part Change Information List

Date: November 2, 2017

Model	Code	PCIL Number	PCIL Correction	Old part number	New part number	Description	Old Q'ty	New Q'ty	Int	3DPC	Page	Index	Set	Set Int	RTB	Note	Ref Number	ECN Number
N-C2 Folder FD6500A	B889	201710		B8891979		GUARD:INNER COVER	1	0	X/O	N	5	14			Y		V1701782	17090833