

Model: Multi-Folding Unit FD5000		Date: 12-Jun-09	No.: RD454001
Subject: Correct procedures for pulling out inner folding unit / Grip modification		Prepared by: T.Tadokoro	
From: PPMC Service Planning Department 1G			
Classification:	<input type="checkbox"/> Troubleshooting <input type="checkbox"/> Mechanical <input type="checkbox"/> Paper path <input type="checkbox"/> Product Safety	<input type="checkbox"/> Part information <input type="checkbox"/> Electrical <input type="checkbox"/> Transmit/receive <input checked="" type="checkbox"/> Other (      )	<input checked="" type="checkbox"/> Action required <input type="checkbox"/> Service manual revision <input type="checkbox"/> Retrofit information <input type="checkbox"/> Tier2

## REQUEST

Upon machine installation or your next service visit, please make sure to notify your customers of the correct procedures for opening and pulling out the folding unit to prevent damage to the Pre-stack Guide Plate **Grip (attached with Decal N10)**.

## REASON

To pull out the folding unit, the Pre-stack Guide Plate (attached with Decal N10) requires a "clinch" as seen on Decal N10 (figure 1). When forced to open without the "clinch", the Pre-stack Guide Plate Grip could bend or even break (figure 2).



Figure 1

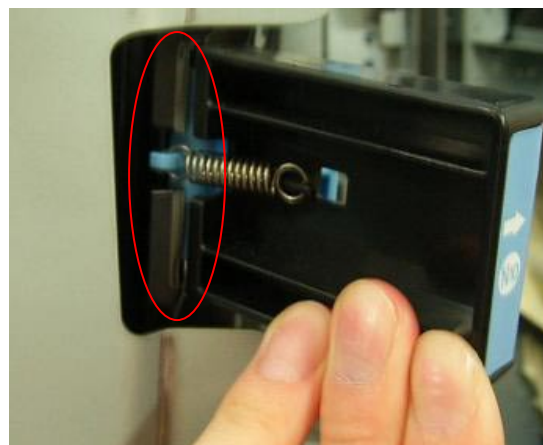


Figure 2

## REQUIRED ACTION / SOLUTION

Along with thorough notification to customers of correct procedures for pulling out the unit, the Pre-stack Guide Plate Grip will be modified for improved durability. The modified Grip will be reflected from July - August production.



**Reissued: 03-Dec-09**

Model: Multi-Folding Unit FD5000	Date: 08-Jul-09	No.: RD454002a
----------------------------------	-----------------	----------------

**RTB Reissue**

The items in bold italics have been corrected.

Subject: Firmware Release Note: Folder_DONAU		Prepared by: T. Tadokoro	
From: PPBG QA/Service Planning Dept.			
Classification:	<input type="checkbox"/> Troubleshooting	<input type="checkbox"/> Part information	<input type="checkbox"/> Action required
	<input type="checkbox"/> Mechanical	<input type="checkbox"/> Electrical	<input type="checkbox"/> Service manual revision
	<input type="checkbox"/> Paper path	<input type="checkbox"/> Transmit/receive	<input type="checkbox"/> Retrofit information
	<input type="checkbox"/> Product Safety	<input checked="" type="checkbox"/> Other (      )	<input type="checkbox"/> Tier 2

This RTB has been issued to announce the firmware release information for the **Folder\_DONAU**.

Version	Program No.	Effective Date
<b><i>01.140:12</i></b>	<b><i>D4545132A</i></b>	<b><i>September 2009 production</i></b>
01.110:12	D4545132	1st Mass production

Version	Modified Points or Symptom Corrected
<b><i>01.140:12</i></b>	<b><i>Symptom Corrected:</i></b> <ul style="list-style-type: none"> <li><b><i>Fold position adjustment is not reflected.</i></b></li> </ul>
01.110:12	1st Mass production



**Reissued: 29-Dec-09**

Model: Multi-Folding Unit FD5000	Date: 08-Jul-09	No.: RD454002b
----------------------------------	-----------------	----------------

**RTB Reissue**

The items in bold italics have been corrected.

Subject: Firmware Release Note: Folder_DONAU		Prepared by: T. Mimura	
From: PPBG QA/Service Planning Dept.			
Classification:	<input type="checkbox"/> Troubleshooting	<input type="checkbox"/> Part information	<input type="checkbox"/> Action required
	<input type="checkbox"/> Mechanical	<input type="checkbox"/> Electrical	<input type="checkbox"/> Service manual revision
	<input type="checkbox"/> Paper path	<input type="checkbox"/> Transmit/receive	<input type="checkbox"/> Retrofit information
	<input type="checkbox"/> Product Safety	<input checked="" type="checkbox"/> Other (      )	<input type="checkbox"/> Tier 2

This RTB has been issued to announce the firmware release information for the **Folder\_DONAU**.

Version	Program No.	Effective Date
<b>01.180:12</b>	<b>D4545132B</b>	<b>December 2009 production</b>
01.140:12	D4545132A	September 2009 production
01.110:12	D4545132	1st Mass production

Version	Modified Points or Symptom Corrected
<b>01.180:12</b>	<b>Symptom Corrected:</b> <ul style="list-style-type: none"> <li>• <b>Default adjustment value has been changed.</b></li> <li>• <b>When paper size is changed in the same job and using gate fold, the jam problem has been fixed.</b></li> <li>• <b>When the NRS system is connected and jammed paper is not removed, the warn screen unshown problem has been fixed.</b></li> <li>• <b>When folding pattern, paper size had been changed in the same job, the jam problem has been fixed.</b></li> <li>• <b>Jogger encounter with the paper has been fixed.</b></li> <li>• <b>When z-folding and outputted to a down stream peripheral, changing shift tray output and proof tray output jam problem has been fixed.</b></li> </ul>
01.140:12	Symptom Corrected: <ul style="list-style-type: none"> <li>• Fold position adjustment is not reflected.</li> </ul>
01.110:12	1st Mass production



**Reissued: 18-Aug-10**

Model: Multi-Folding Unit FD5000	Date: 08-Jul-09	No.: RD454002c
----------------------------------	-----------------	----------------

**RTB Reissue**

The items in bold italics have been corrected.

Subject: Firmware Release Note: Folder_DONAU		Prepared by: T. Mimura	
From: PPBG/Service Planning Dept.			
Classification:	<input type="checkbox"/> Troubleshooting	<input type="checkbox"/> Part information	<input type="checkbox"/> Action required
	<input type="checkbox"/> Mechanical	<input type="checkbox"/> Electrical	<input type="checkbox"/> Service manual revision
	<input type="checkbox"/> Paper path	<input type="checkbox"/> Transmit/receive	<input type="checkbox"/> Retrofit information
	<input type="checkbox"/> Product Safety	<input checked="" type="checkbox"/> Other (      )	<input type="checkbox"/> Tier 2

This RTB has been issued to announce the firmware release information for the **Folder\_DONAU**.

Version	Program No.	Effective Date
<b><i>01.190:12</i></b>	<b><i>D4545132C</i></b>	<b><i>August 2010 production</i></b>
01.180:12	D4545132B	December 2009 production
01.140:12	D4545132A	September 2009 production
01.110:12	D4545132	1st Mass production

Version	Modified Points or Symptom Corrected
<b><i>01.190:12</i></b>	<b><i>Symptom fixed:</i></b> - <b><i>Jam recovery problem fixed.</i></b>  <b><i>Other changes:</i></b> - <b><i>Venus-C3 corresponded</i></b>
01.180:12	Symptom Corrected: <ul style="list-style-type: none"> <li>• Default adjusted value has been changed.</li> <li>• When paper size is changed in the same job and using gate fold, the jam problem has been fixed.</li> <li>• When the NRS system is connected and jam paper is not removed, the warn screen unshown problem has been fixed.</li> <li>• When folding pattern, paper size had been changed in the same job, the jam problem has been fixed.</li> <li>• Jogger encounter with the paper has been fixed.</li> <li>• When z-folding and outputted to the down stream, changing shift tray output and proof tray output jam problem has been fixed.</li> </ul>
01.140:12	Symptom Corrected: <ul style="list-style-type: none"> <li>• Fold position adjustment is not reflected.</li> </ul>
01.110:12	1st Mass production



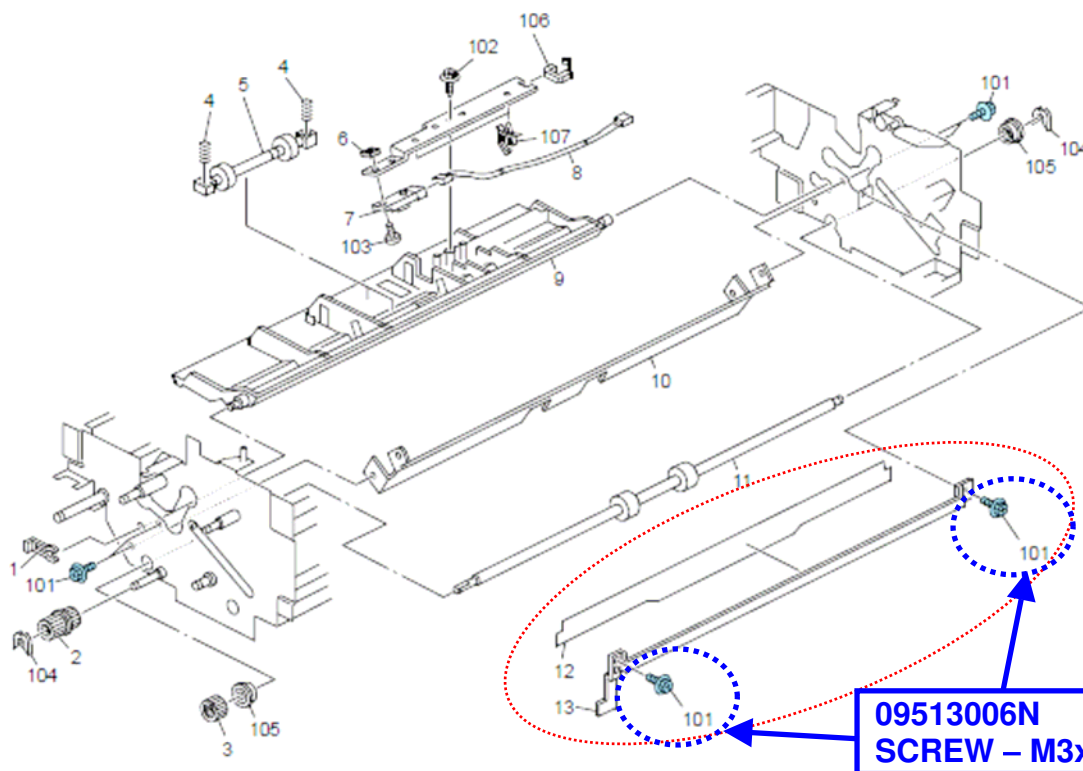
Model: Multi-Folding Unit FD5000 (D454)		Date: 16-Nov-10	No.: RD454003
Subject: Part Changes - Guide Plate		Prepared by: T. Komori	
From: PP Service Planning Department 1G			
Classification:	<input type="checkbox"/> Troubleshooting <input checked="" type="checkbox"/> Part information <input type="checkbox"/> Action required <input type="checkbox"/> Mechanical <input type="checkbox"/> Electrical <input type="checkbox"/> Service manual revision <input type="checkbox"/> Paper path <input type="checkbox"/> Transmit/receive <input type="checkbox"/> Retrofit information <input type="checkbox"/> Product Safety <input type="checkbox"/> Other (      ) <input type="checkbox"/> Tier 2		

**Change:** Shape of the parts and screw types

**Reason:** To prevent misalignment of the brackets (D4554216 & D4554217) in the manufacturing process

Old Part Number	New Part Number	Description	Q'ty	Int	Page	Index	Note
D4553611	D4543615	GUIDE PLATE:NO.1	1	X/O	29	1	
D4544101	D4544105	PAPER CRIMP SUB-UNIT:NO.1:ASS'Y	1	X/O	31, 35	*	
D4544216	D4544218	GUIDE PLATE:NO.1:ENTRANCE	1	X/O	39	13	
D4544217	D4544219	SHEET:GUIDE:NO.1	1	X/O	39	12	
	09513006N	SCREW - M3X6	2		39	108	Add

19.Fold Unit 13 (D454)





Model: Multi-Folding Unit FD5000 (D454)		Date: 18-Nov-10	No.: RD454004
Subject: Jogger Fence modified to prevent false detection		Prepared by: T. Komori	
From: PP Service Planning Department 1G			
Classification:	<input type="checkbox"/> Troubleshooting <input checked="" type="checkbox"/> Part information <input type="checkbox"/> Action required <input type="checkbox"/> Mechanical <input type="checkbox"/> Electrical <input type="checkbox"/> Service manual revision <input type="checkbox"/> Paper path <input type="checkbox"/> Transmit/receive <input type="checkbox"/> Retrofit information <input type="checkbox"/> Product Safety <input type="checkbox"/> Other (      ) <input type="checkbox"/> Tier 2		

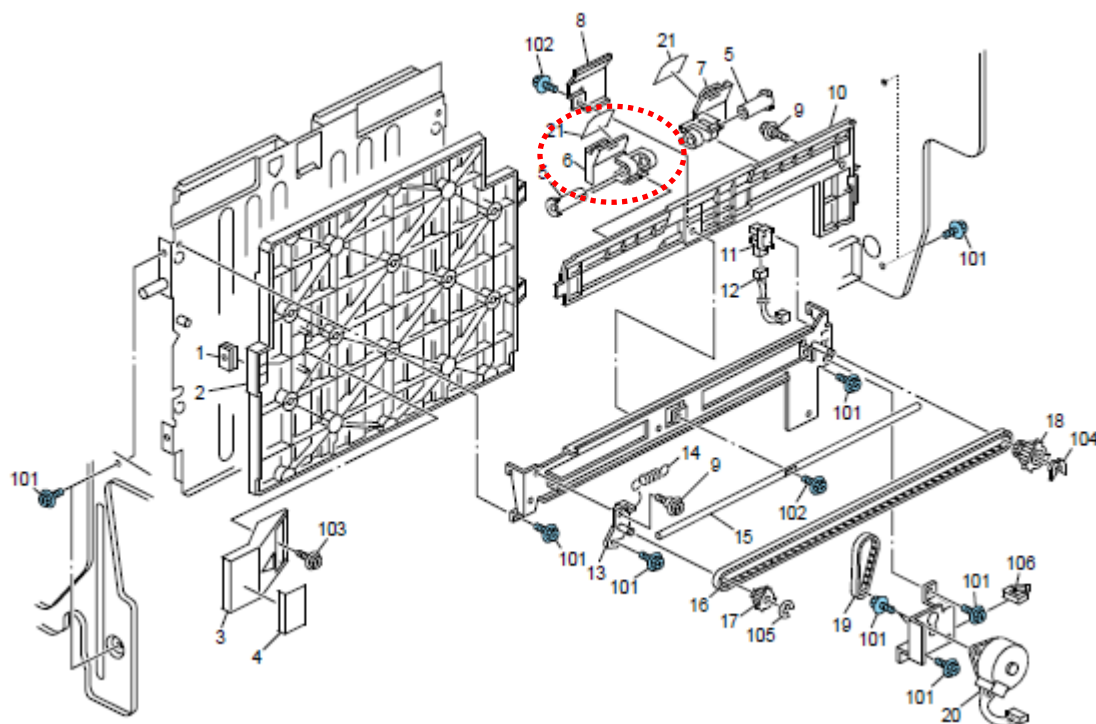
**Change:** Part was added

**Reason:** To prevent the paper detection sensor from falsely detecting the jogger fence

Old Part Number	New Part Number	Description	Q'ty	Int	Page	Index	Note
D4543693	D4543672	JOGGER FENCE:FRONT	1	X/O	X/O as a set	25	6
	D4543673	PAD:SENSOR	1			25	22 Add

A pad has been added to the jogger fence to optimize the distance between the paper detection sensor and the jogger fence which will give a larger margin of error.

## 12.Fold Unit 6 (D454)

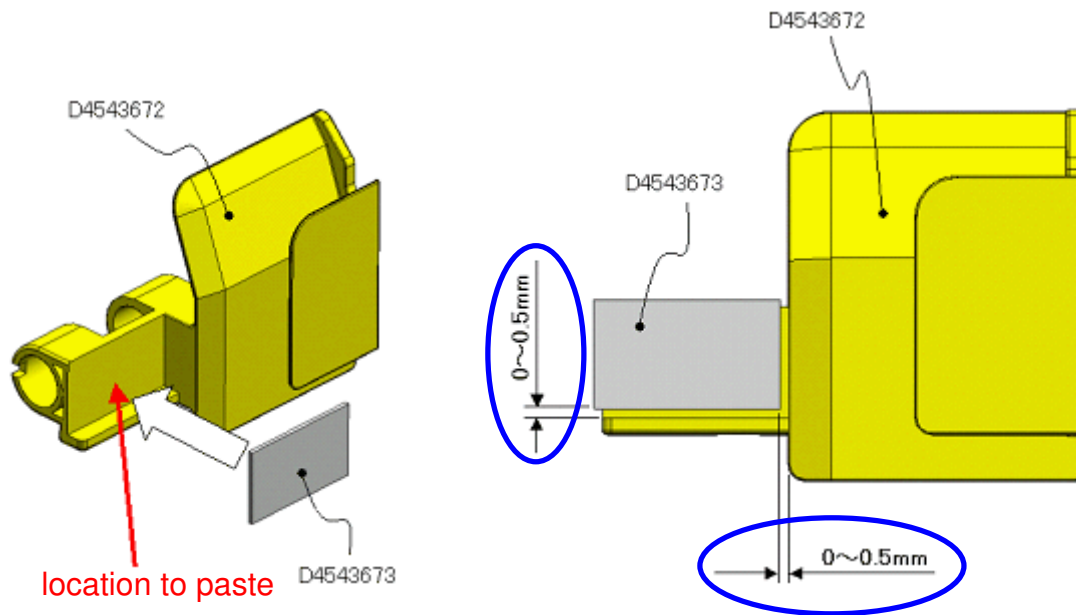




Model: Multi-Folding Unit FD5000 (D454)

Date: 18-Nov-10

No.: RD454004



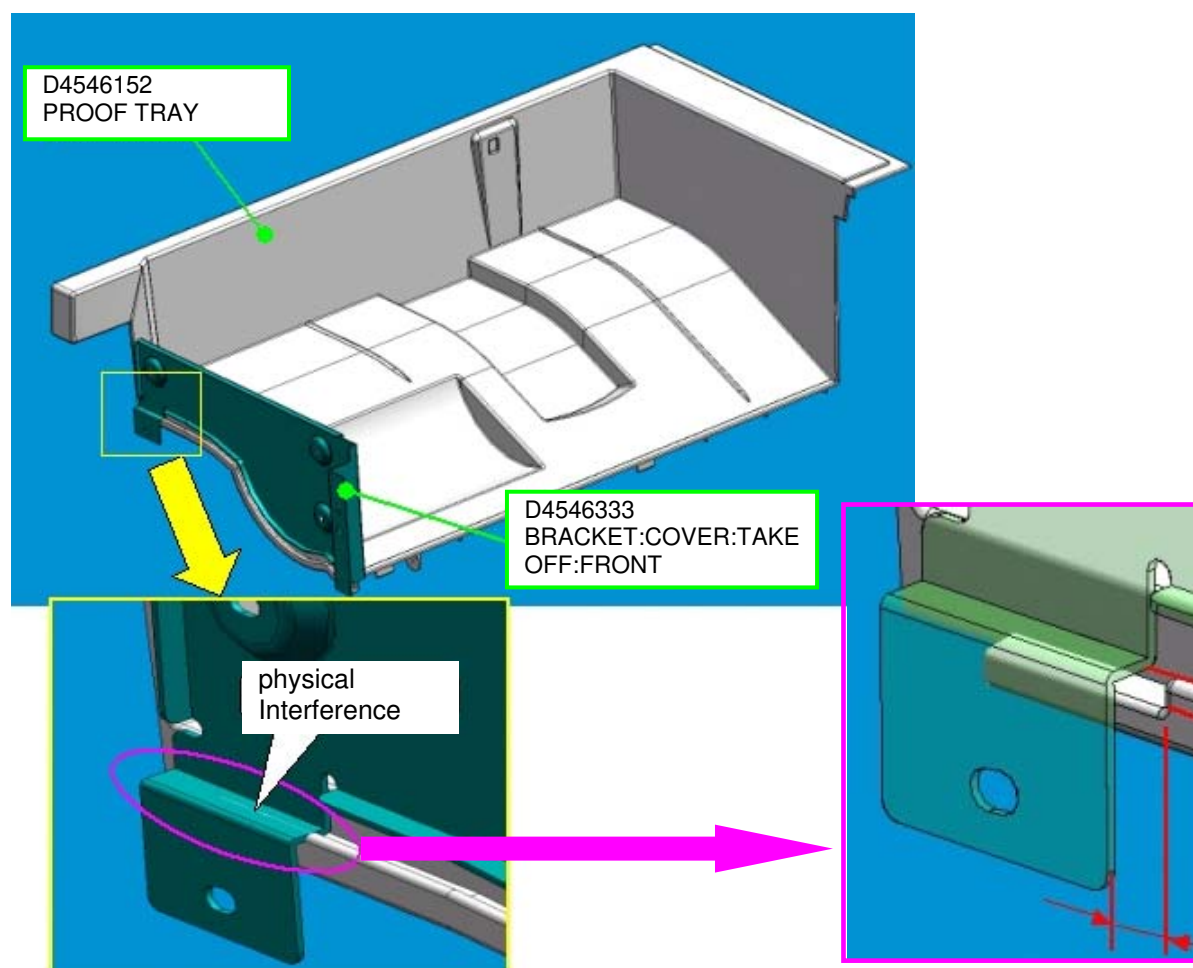


Model: Multi-Folding Unit FD5000 (D454)		Date: 22-Apr-11	No.: RD454005
Subject: Part Changes – proof tray		Prepared by: T. Komori	
From: PP Service Planning Department 1G			
Classification:	<input type="checkbox"/> Troubleshooting <input type="checkbox"/> Mechanical <input type="checkbox"/> Paper path <input type="checkbox"/> Product Safety	<input checked="" type="checkbox"/> Part information <input type="checkbox"/> Electrical <input type="checkbox"/> Transmit/receive <input type="checkbox"/> Other (     )	<input type="checkbox"/> Action required <input type="checkbox"/> Service manual revision <input type="checkbox"/> Retrofit information <input type="checkbox"/> Tier 2

**Change:** Shape of the part

**Reason:** As a result of the bracket modification (D4546332 → D4546333), interference occurred as shown in the following diagram. This modification is to standardize for releasing Multi-Folding Unit FD5010.

Old Part Number	New Part Number	Description	Q'ty	I/C	Page	Index
D4546152	D4546153	PROOF TRAY	1	X/O	59	4
D4546332	D4546333	BRACKET:COVER:TAKE OFF:FRONT	1	X/O	3	8



Tray's shape has been changed.  
(D4546152 -> D4546153)



Model: Multi-Folding Unit FD5000 (D454)		Date: 27-Jan-12	No.: RD454006
Subject: Part Changes – parts standardization with FD5010		Prepared by: T. Komori	
From: PP Service Planning Department 1G			
Classification:	<input type="checkbox"/> Troubleshooting <input checked="" type="checkbox"/> Part information <input type="checkbox"/> Action required <input type="checkbox"/> Mechanical <input type="checkbox"/> Electrical <input type="checkbox"/> Service manual revision <input type="checkbox"/> Paper path <input type="checkbox"/> Transmit/receive <input type="checkbox"/> Retrofit information <input type="checkbox"/> Product Safety <input type="checkbox"/> Other (      ) <input type="checkbox"/> Tier 2		

**Change:** Shape of the parts

**Reason:** Standardization of parts according to the release of the Multi-Folding Unit FD5010 (D521)

Old P/N	New P/N	Description	Q'ty	I/C		Page	Index	Note
D4546511	D4546512 D4546516	INNER COVER:PAPER CRIMP SUB-UNIT	1	X/O	as a set			
D4547123	D4547129	DECAL:LEVER:TURN:N13	1					

Old P/N	New P/N	Description	Q'ty	I/C		Page	Index	Note
D4544419	D4544422	COVER:DC MOTOR:NO.1	1	X/O	as a set	55	21	
	11050623	CLAMP - LBWS-0206S-V0	1			15	13	
D4545262	D4545263	HARNESS:SENSOR:PULL OUT: SENSOR	1			45	10	

Old P/N	New P/N	Description	Q'ty	I/C		Page	Index	Note
D4542515	D4542581	GUIDE PLATE:PROOF TRAY: RIGHT UPPER: ASS'Y	1	X/O	as a set	61	16	
D4542527	D4542586	SHAFT:DRIVEN:MOVE	1			61	20	
D4543433	D4542555	GUIDE PLATE:PROOF TRAY: MIDDLE:LEFT:ASS'Y	1			6	22	

Old P/N	New P/N	Description	Q'ty	I/C		Page	Index	Note
D4543842	D4543845	GUIDE:LEFT LOWER		X/O	as a set	43	23	
D4543841	D4543844	GUIDE PLATE:NO.3:OPEN AND CLOSE				43	26	
D4544666	D4544654	GUIDE PLATE:LEFT LOWER: ENTRANCE:OPEN AND CLOSE	1			41	14	
D4544710	D4544718	GUIDE:PAPER CRIMP SUB-UNIT:NO.2				45	16	

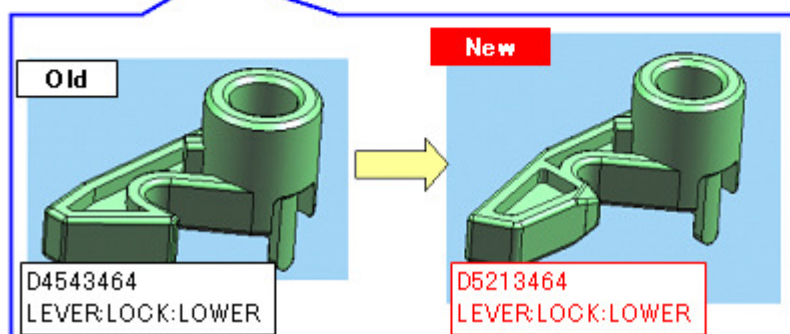
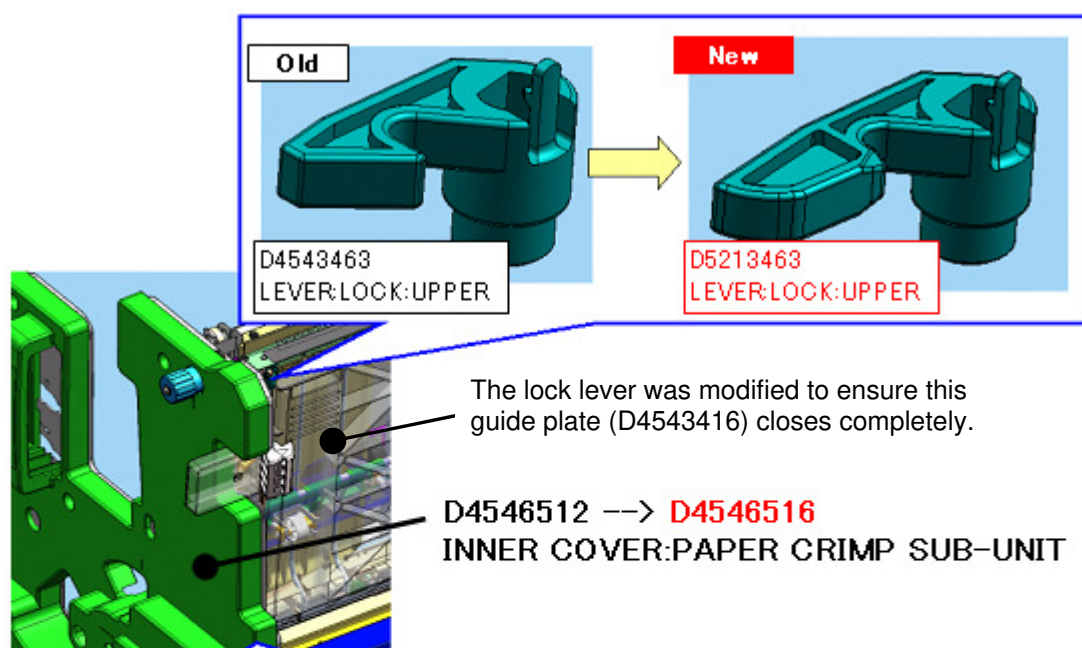


Model: Multi-Folding Unit FD5000 (D454)		Date: 27-Jan-12	No.: RD454007
Subject: Part Changes – Lever and Inner Cover		Prepared by: T. Komori	
From: PP Service Planning Department 1G			
Classification:	<input type="checkbox"/> Troubleshooting <input checked="" type="checkbox"/> Part information <input type="checkbox"/> Action required <input type="checkbox"/> Mechanical <input type="checkbox"/> Electrical <input type="checkbox"/> Service manual revision <input type="checkbox"/> Paper path <input type="checkbox"/> Transmit/receive <input type="checkbox"/> Retrofit information <input type="checkbox"/> Product Safety <input type="checkbox"/> Other (      ) <input type="checkbox"/> Tier 2		

**Change:** Shape of the lock lever

**Reason:** To ensure complete shut of the guide plate to prevent possible jams

Old Part Number	New Part Number	Description	Q'ty	Int	Page	Index	Note
D4543463	D5213463	LEVER:LOCK:UPPER	1	X/O	as a set	17	20
D4543464	D5213464	LEVER:LOCK:LOWER	1	X/O		17	21
D4546512	D4546516	INNER COVER:PAPER CRIMP SUB-UNIT	1	X/O		15	6





**Reissued: 18-Apr-12**

Model: Multi-Folding Unit FD5000	Date: 08-Jul-09	No.: RD454002d
----------------------------------	-----------------	----------------

**RTB Reissue**

The items in bold italics have been corrected.

Subject: Firmware Release Note: Folder_DONAU		Prepared by: J. Ohno	
From: 1st PP Tech Service Sect., PP Tech Service Dept.			
Classification:	<input type="checkbox"/> Troubleshooting <input type="checkbox"/> Mechanical <input type="checkbox"/> Paper path <input type="checkbox"/> Product Safety	<input type="checkbox"/> Part information <input type="checkbox"/> Electrical <input type="checkbox"/> Transmit/receive <input checked="" type="checkbox"/> Other (      )	<input type="checkbox"/> Action required <input type="checkbox"/> Service manual revision <input type="checkbox"/> Retrofit information <input type="checkbox"/> Tier 2

This RTB has been issued to announce the firmware release information for the **Folder\_DONAU**.

Version	Program No.	Effective Date	Availability of RFU
<b>01.200:12</b>	<b>D4545132D</b>	<b>March 2012 production</b>	<b>Available</b>
01.190:12	D4545132C	August 2010 production	Available
01.180:12	D4545132B	December 2009 production	Available
01.140:12	D4545132A	September 2009 production	Available
01.110:12	D4545132	1st Mass production	Available

**Note: Definition of Availability of RFU via @Remote**
**“Available”** The firmware can be updated via RFU or SD card.

**“Not available”:** The firmware can only be updated via SD card.

Version	Modified Points or Symptom Corrected
<b>01.200:12</b>	<b>Symptoms Corrected:</b> <b><i>After feeding a cover sheet from the Cover Interposer, the first sheet fed from the mainframe to be Z-folded results in a jam at the Multi-folder unit.</i></b>
01.190:12	Symptom fixed: - Jam recovery problem fixed.  Other changes: - Venus-C3 corresponded
01.180:12	Symptom Corrected: - Default adjusted value has been changed. - When paper size is changed in the same job and using gate fold, the jam problem has been fixed. - When the NRS system is connected and jam paper is not removed, the warn screen unshown problem has been fixed. - When folding pattern, paper size had been changed in the same job, the jam problem has been fixed. - Jogger encounter with the paper has been fixed. - When z-folding and outputted to the down stream, changing shift tray output and proof tray output jam problem has been fixed.
01.140:12	Symptom Corrected: - Fold position adjustment is not reflected.



**Reissued: 18-Apr-12**

Model: Multi-Folding Unit FD5000	Date: 08-Jul-09	No.: RD454002d
----------------------------------	-----------------	----------------

Version	Modified Points or Symptom Corrected
01.110:12	1st Mass production

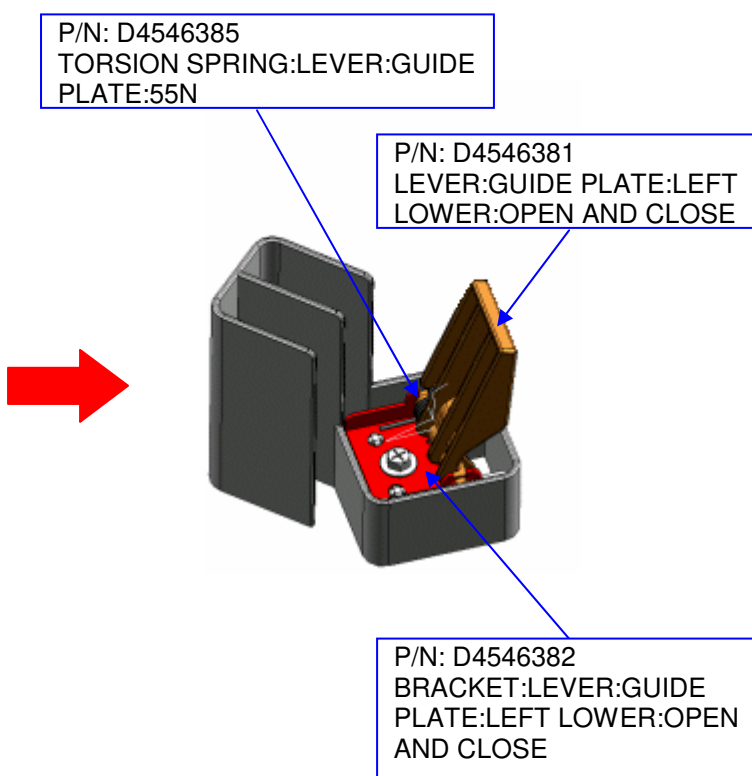


Model: Multi-Folding Unit FD5000 (D454)		Date: 05-Jun-12	No.: RD454008
Subject: Door Stopper P/N		Prepared by: J. Ohno	
From: PP Tech Service Dept., 1st PP Tech Service Sect.			
Classification:	<input type="checkbox"/> Troubleshooting <input type="checkbox"/> Mechanical <input type="checkbox"/> Paper path <input type="checkbox"/> Product Safety	<input checked="" type="checkbox"/> Part information <input type="checkbox"/> Electrical <input type="checkbox"/> Transmit/receive <input type="checkbox"/> Other (     )	<input type="checkbox"/> Action required <input type="checkbox"/> Service manual revision <input type="checkbox"/> Retrofit information <input type="checkbox"/> Tier 2

**Change:** The following parts were added as service parts.

**Reason:** To increase magnetic strength for secure closing of the door.

Old Part Number	New Part Number	Description	Q'ty	Int	Page	Index	Note
-	D4546381	LEVER:GUIDE PLATE:LEFT LOWER:OPEN AND CLOSE	1	-	3	22	Add
-	D4546382	BRACKET:LEVER:GUIDE PLATE:LEFT LOWER:OPEN AND CLOSE	1	-	3	23	Add
-	D4546385	TORSION SPRING:LEVER:GUIDE PLATE:55N	1	-	3	24	Add





Model: Multi-Folding Unit FD5000 (D454)		Date: 22-Jun-12	No.: RD454009
Subject: New P/N of motor cover and harness		Prepared by: J. Ohno	
From: PP Tech Service Dept., 1st PP Tech Service Sect.			
Classification:	<input type="checkbox"/> Troubleshooting <input type="checkbox"/> Mechanical <input type="checkbox"/> Paper path <input type="checkbox"/> Product Safety	<input checked="" type="checkbox"/> Part information <input type="checkbox"/> Electrical <input type="checkbox"/> Transmit/receive <input type="checkbox"/> Other (     )	<input type="checkbox"/> Action required <input type="checkbox"/> Service manual revision <input type="checkbox"/> Retrofit information <input type="checkbox"/> Tier 2

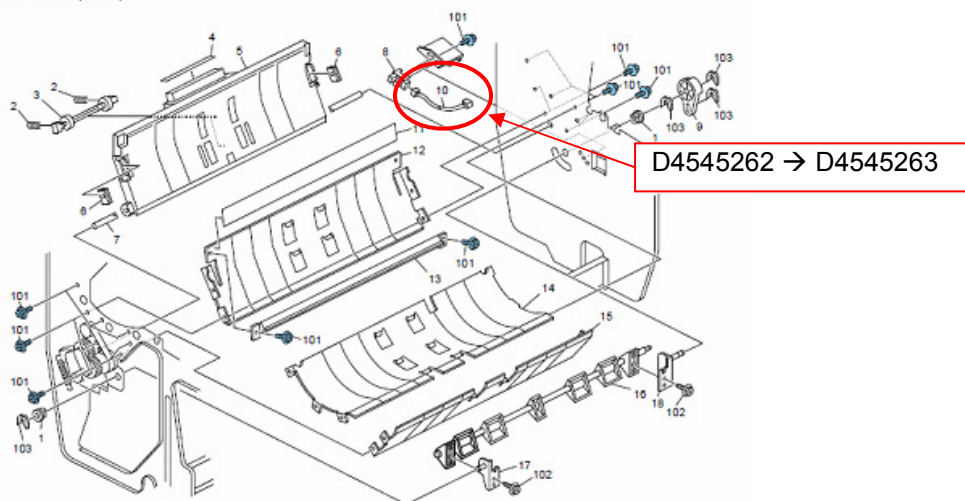
**Change:** P/N modification of the motor cover and harness

**Reason:** To allow application of common parts with the Multi-Folding Unit FD5010

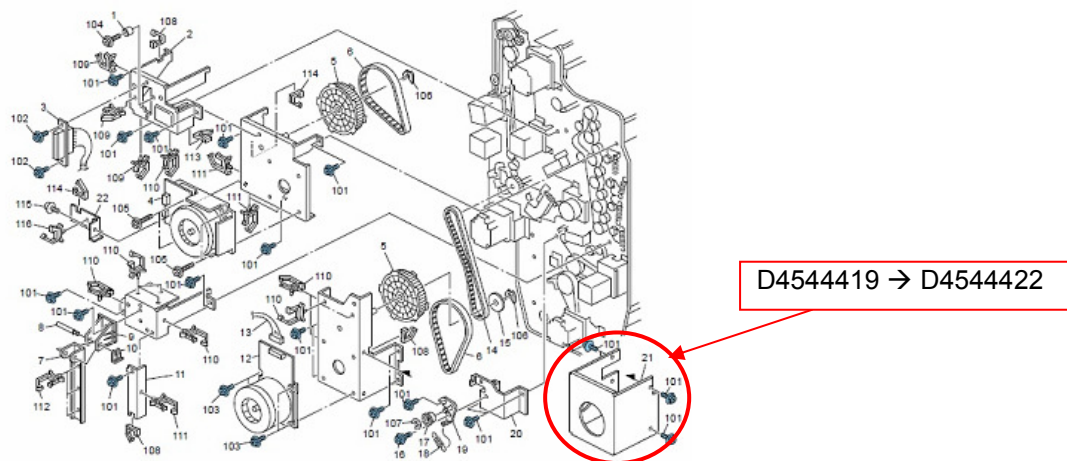
Old Part Number	New Part Number	Description	Q'ty	Int	Page	Index	Note
D4544419	D4544422	COVER:DC MOTOR:NO.1	1	X/O	55	21	-
D4545262	D4545263	HARNESS:SENSOR:PULL OUT:SENSOR	1	X/O	45	10	-

When replacing the above parts for the first time, replace as a set.

22.Fold Unit 16 (D454)



27.Fold Unit 21 (D454)





Model: Folder FD5000		Date: 28-Nov-14	No.: RD454010
Subject: Parts catalog correction – Paper Feed Guide Plate		Prepared by: J. Ohno	
From: PP Tech Service Dept., 3rd PP Tech Service Sect.			
Classification:	<input type="checkbox"/> Troubleshooting <input type="checkbox"/> Mechanical <input type="checkbox"/> Paper path <input type="checkbox"/> Product Safety	<input checked="" type="checkbox"/> Part information <input type="checkbox"/> Electrical <input type="checkbox"/> Transmit/receive <input type="checkbox"/> Other (     )	<input type="checkbox"/> Action required <input type="checkbox"/> Service manual revision <input type="checkbox"/> Retrofit information <input type="checkbox"/> Tier2

The following parts were modified to prevent the drive gear of the first fold roller from breaking as a result of jams.

Old p/n	New p/n	Description	Q'ty	Int		Page	Index	Note
D4544198	D5214198	GUIDE PLATE:MIDDLE:GATE: OPEN AND CLOSE	1	X/O	As a set	39	9	Change
-	D5214199	ROLLER:GUIDE PLATE:MIDDLE: OPEN AND CLOSE	1	-		39	14	Add

## 19.Fold Unit 13 (D454)

