

Model: Z-C2		Date: 30-May-14	No.: RD791001
Subject: Service manual correction (Fax option)		Prepared by: K.Kunimatsu	
From: 1st Tech Service Sect., MFP/P Tech Service Dept.			
Classification:	<input type="checkbox"/> Troubleshooting <input type="checkbox"/> Mechanical <input type="checkbox"/> Paper path <input type="checkbox"/> Product Safety	<input type="checkbox"/> Part information <input type="checkbox"/> Electrical <input type="checkbox"/> Transmit/receive <input type="checkbox"/> Other ()	<input type="checkbox"/> Action required <input checked="" type="checkbox"/> Service manual revision <input type="checkbox"/> Retrofit information <input type="checkbox"/> Tier 2

Service Manual Revision

The Installation Procedure was corrected as follows.

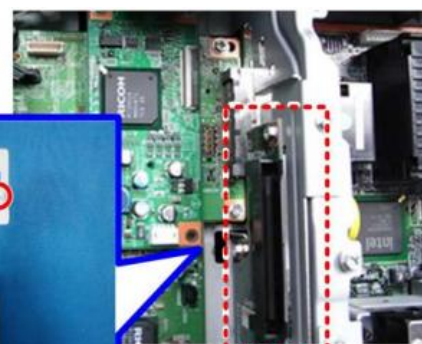
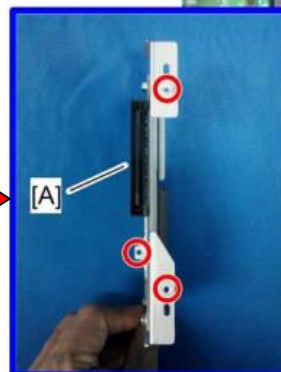
Fax option

Incorrect

Correct



d791b0005



d483i518

10. Fasten the relay board [A] (⚙️x2). **3**

- Make sure that the FCU is seated correctly. If not, SC672 occurs.

24. Connect the modular harnesses to the FCU (🔌x2).

- [A] 2-pin connector
- [B] 3-pin connector



For NA

- [A] 2-pin connector
- [B] 3-pin connector

For EU

- [A] 6-pin connector
- [B] 6-pin connector