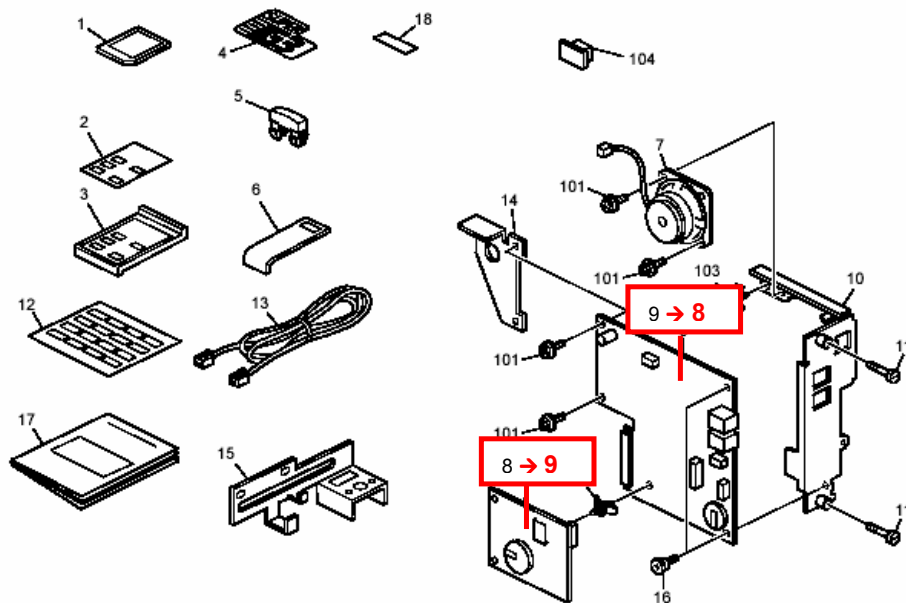


Model: PR-C1 (Fax Option)		Date: 19-Jun-07	No.: MD010001
Modified Article: Parts Catalog Correction		Prepared by: M. Ishihara	
From: 1st Tech. Support Sec. Service Support Dept.			
Reason for Modification:	<input checked="" type="checkbox"/> Parts catalog correction <input type="checkbox"/> Vendor change <input type="checkbox"/> Other <input type="checkbox"/> To facilitate assembly <input type="checkbox"/> To improve reliability <input type="checkbox"/> To meet standards <input type="checkbox"/> Part standardization <input type="checkbox"/> Product Safety ()		

Please correct your parts catalog as follows.

Old part number	New part number	Description	Q'ty	Int	Page	Index	Note
D3455080	-	PCB : MBU : Ass'y	1	-	2	8→9	
B8685172	-	PCB : GWFCU3 : NA	1	-	2	9→8	
B8685174	-	PCB : GWFCU3 : EU	1	-	2	9→8	

1.Fax Option (D345)



Model: PR-C1 (Fax option type 2500 – D345)		Date: 04-Mar-08	No.: MD010007
Modified Article: Decal:Fax:NA:Option		Prepared by: M. Ishihara	
From: 1st Tech. Support Sec. Service Support Dept.			
Reason for Modification:	<input checked="" type="checkbox"/> Parts catalog correction <input type="checkbox"/> Vendor change <input type="checkbox"/> Other <input type="checkbox"/> To facilitate assembly <input type="checkbox"/> To improve reliability <input type="checkbox"/> To meet standards <input type="checkbox"/> Part standardization <input type="checkbox"/> Product Safety		

Incorrect part number	Correct part number	Description	Q'ty	Int	Page	Index	Note
B2671476	D3451476	Decal:Fax:NA:Option	1	-	3	12	Parts Catalog for Fax Option

Change/ Reason: Part number correction



Part Change Information List

Date: May 30, 2009

Model	Code	PCIL Number	PCIL Correction	Old part number	New part number	Description	Old Q'ty	New Q'ty	Int	3DPC	Page	Index	Set	Set Int	RTB	Note	Ref Number
PARISIAN-C1 FAX	D345	200905			D3451480	DECAL:FAX:KOR	0	1			3	12					V0803744