



Color Controller E-7100

Start Guide

Kurzanleitung

Guide de démarrage

Guida di avvio

Guía de inicio

Starthandleiding



TABLE OF CONTENTS

FCC Warning	A-1
Note to users in the United States of America	A-1
Note to users in Canada	A-2
Remarque concernant les utilisateurs au Canada	A-2
Safety Information	A-3
Safety During Operation.....	A-3
Power Cord Precautions	A-4
Power Supply	A-4

1. Getting Started

Checking the Contents.....	A-5
For the Site Administrator	A-5
For the Service Technician	A-5
Guide to Components	A-6
Where to Put the E-7100.....	A-7
Caution.....	A-7
Space Required for Installation	A-7
Dimensions and Weight	A-7
Environment	A-8
When Moving the E-7100.....	A-9

2. Using the E-7100

E-7100 Startup, Shutdown and Restart.....	A-11
To Start the Main Unit and the E-7100.....	A-11
To Shut Down the Main Unit and the E-7100.....	A-11
To Shut Down the E-7100 only	A-12
To Restart the E-7100.....	A-12
Power Up Sequence	A-13

FCC Warning

Note to users in the United States of America

Note:

This equipment has been tested and found to comply with the limits for a Class B digital device, pursuant to Part 15 of the FCC Rules. These limits are designated to provide reasonable protection against harmful interference in a residential installation. This equipment generates, uses and can radiate radio frequency energy and, if not installed and used in accordance with the instructions, may cause harmful interference to radio communications. However, there is no guarantee that interference will not occur in a particular installation. If this equipment does cause harmful interference to radio or television reception, which can be determined by turning the equipment off and on, the user is encouraged to try to correct the interference by one more of the following measures:

- Reorient or relocate the receiving antenna.
- Increase the separation between the equipment and receiver.
- Connect the equipment into an outlet on a circuit different from that to which the receiver is connected.
- Consult the dealer or an experienced radio /TV technician for help.

Caution:

Changes or modifications not expressly approved by the party responsible for compliance could void the user's authority to operate the equipment.

Declaration of Conformity

- Product Name: Color Controller
- Model Number: E-7100
- Responsible party:
Ricoh Americas Corporation
- Address:
5 Dedrick Place, West Caldwell, NJ 07006
- Telephone number:
973-882-2000

This device complies with Part 15 of the FCC Rules. Operation is subject to the following two conditions: (1) this device may not cause harmful interference, and (2) this device must accept any interference received, including interference that may cause undesired operation.

Note to users in Canada

Note:

This Class B digital apparatus complies with Canadian ICES-003.

Remarque concernant les utilisateurs au Canada

Avertissement:

Cet appareil numérique de la classe B est conforme à la norme NMB-003 du Canada.



Caution:

Properly shielded and grounded cables and connectors must be used for connections to host computer (and/or peripheral) in order to meet FCC emission limits.

Caution:

An LAN cable with ferite core must be used for RF interference suppression.

Safety Information

Read this Safety Information carefully before you use this product and keep it handy for future reference.

When using this machine, the following safety precautions should always be followed.

Safety During Operation

In this manual, the following important symbols are used:

⚠ WARNING:
Indicates a potentially hazardous situation which, if instructions are not followed, could result in death or serious injury.

⚠ CAUTION:
Indicates a potentially hazardous situation which, if instructions are not followed, may result in minor or moderate injury or damage to property.

⚠ WARNING:

- **Connect the power cord directly into a wall outlet and never use an extension cord.**
- **Disconnect the power plug (by pulling the plug, not the cable) if the power cable or plug becomes frayed or otherwise damaged.**
- **To avoid hazardous electric shock, do not remove any covers or screws other than those specified in this manual.**
- **Turn off the power and disconnect the power plug (by pulling the plug, not the cable) if any of the following occurs:**
 - **You spill something into the machine.**
 - **You suspect that your machine needs service or repair.**
 - **The external housing of your machine has been damaged.**
- **Keep the polythene materials (bags, gloves, etc.) supplied with this machine away from babies and small children at all times. Suffocation can result if polythene materials are brought into contact with the mouth or nose.**

 **CAUTION:**

- *Protect the machine from dampness or wet weather, such as rain and snow.*
- *Unplug the power cord from the wall outlet before you move the machine.*
- *While moving the machine, you should take care that the power cord will not be damaged under the machine.*
- *When you disconnect the power plug from the wall outlet, always pull the plug (not the cable).*
- *Risk of explosion if battery is replaced by an incorrect type.*
- *Dispose of used batteries according to the instructions.*

Power Cord Precautions

To reduce the risk of electric shock or damage to the equipment:

- Use the appropriate power cord which was set up by your manufacturer's authorized service provider.
- Do not place objects on AC power cords or cables. Arrange them so that no one may accidentally step on or trip over them.
- Do not pull on a cord or cable. When unplugging from the electrical outlet, grasp the cord by the plug.
- Do not disable the power cord grounding plug. The grounding plug is an important safety feature.
- Plug the power cord into a grounded (earthed) electrical outlet that is easily accessible at all times.

Power Supply

The socket-outlet shall be installed near the product and shall be easily accessible.

 **WARNING:**

- ***This product relies on the buildings installation for short circuit (over-current) protection. Ensure that a fuse or circuit breaker no larger than 120VAC, 15A U.S. (240VAC, 10A international) is used on the phase conductors (all current-carrying conductors).***

1. Getting Started

Please read this document before installing or using the Color Controller E-7100.

 **Note**

- ❑ Ricoh supplied and is responsible for all the material provided in this document. If you have questions regarding the material contained in this document, please contact Ricoh Americas Corporation.

Checking the Contents

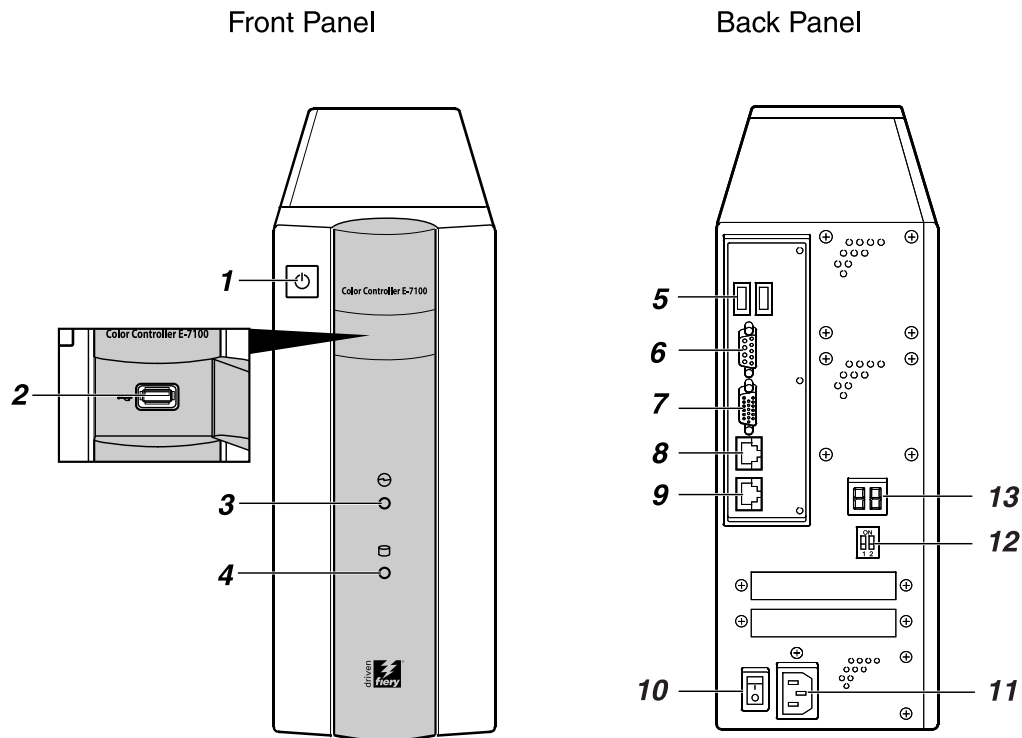
For the Site Administrator

- Media Package
 - 2 CDs (PCL Printer Drivers and Utilities CD, User Documentation CD)
 - DVD (User Software DVD)
 - Welcome
 - Release Note
 - This document (Start Guide)
 - PCL Printer Driver User Software License Agreement
 - Gray Scale Kit
 - Ferrite Core
 - Ferrite Core Installation Guide

For the Service Technician

- Color Controller E-7100
- Extension Card
- Interface Cable
- Fierydriven Logo
- Fierydriven Keytop
- AC power cable
- Installation Procedure

Guide to Components



BKH001S

1. Power switch

See p.11 “E-7100 Startup, Shutdown and Restart”.

2. Front side USB port

Port for installing system software, activating Fiery features, or printing from a prepared USB flash drive

3. Power indicator

When E-7100 is operating, the LED is lit.

4. HDD access indicator

When E-7100 HDD is being accessed, the indicator blinks.

5. Back side USB ports

Port for installing system software, activating Fiery features, or printing from a prepared USB flash drive

6. Not used (Serial port)

7. Not used (Monitor port)

8. Network connector 10/100/1000Mbps

Port for connecting the E-7100 to a LAN

9. Network connector 10/100/1000Mbps

Port for connecting the E-7100 to the main unit

10. Main Power switch

See p.11 “E-7100 Startup, Shutdown and Restart”.

11. Power connector

12. Service switches (for service use only)

13. LEDs (2-digit diagnostic display)

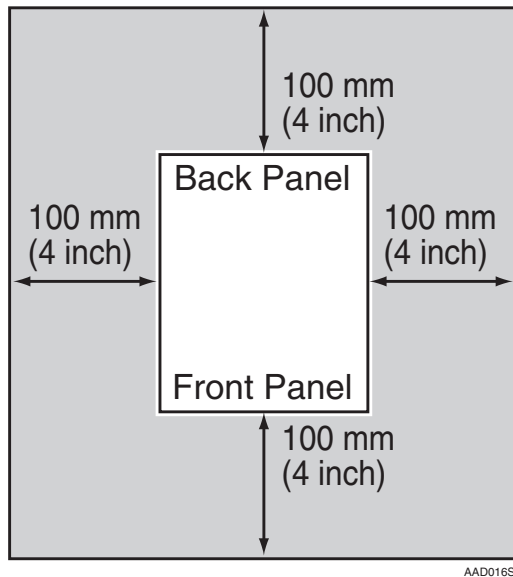
Where to Put the E-7100

Caution

- Insert firmly the plug in the outlet.
- Avoid using an outlet extension plug or cord.
- Ground the E-7100. Avoid using a 3-prong adapter in a 2-hole ungrounded outlet.
- Do not put anything on the power cord.

Space Required for Installation

Place the E-7100 near the power source, providing clearance as shown.



Dimensions and Weight

- weight:
5.8 Kg (12.5 lb.)
- dimensions:
Length: 362.5 mm (14.3 in)
Height: 294.6 mm (11.6 in)
Width: 124.3 mm (4.9 in)

Environment

Environmental specifications	Operating
Ambient temperature	5 °C to 40°C (41 °F to 104 °F)
Relative Humidity	10% to 85% (non condensing)
Altitude	3048 m (10,000 FT)

When Moving the E-7100

CAUTION:

- *Unplug the power cord from the wall outlet before you move the machine. While moving the machine, you should take care that the power cord will not be damaged under the machine.*

Important

- ☐ When moving the machine, the following precautions should always be followed:
 - Turn off the main power. See p.11 “To Shut Down the Main Unit and the E-7100” or p.12 “To Shut Down the E-7100 only”.
 - Unplug the power cord from the wall outlet. When doing this, grip the plug so as not to stress the cord, reducing the risk of fire or electric shock.
- ☐ Move the machine carefully. If you do not, the machine might be damaged or data lost.
- ☐ Protect the machine from impact. Shock could damage the hard disk and result in data loss.

2. Using the E-7100

E-7100 Startup, Shutdown and Restart

The main unit and the E-7100 have separate power switches. During normal operation, turning on the E-7100 is recommended. Powering off the main unit shuts down the E-7100 properly.

To Start the Main Unit and the E-7100

- 1** Turn on the main power switch of the main unit.
- 2** Turn on the main power switch of the E-7100.
- 3** Turn on the power switch of the E-7100.

To Shut Down the Main Unit and the E-7100

- 1** Press the **[fierydriven]** key on the main unit control panel to access to the Fiery menu screen.
- 2** Press **[Fiery]**.
- 3** Press **[Restart Fiery]**.
- 4** Press **[Shut Down]**, and then press **[OK]**.
- 5** Turn off the main power switch of the E-7100.

 **Note**

- ☐ Do not turn off the main power switch of the E-7100 when the power indicator is lit. Make sure the main power switch of the E-7100 is not lit before turning off the main power switch.
- ☐ Turning off main power switch turns off the machine power completely. Use this switch only when necessary.

- 6** Press the operation switch on the main unit control panel.

The operation switch indicator goes off.

- 7** Turn off the main power switch of the main unit.

 **Note**

- ☐ Do not turn the main unit off when the On indicator is on or blinking. Doing so could cause system problems such as hard disk drive or memory problems.

To Shut Down the E-7100 only

- 1** Press the **[fierydriven]** key on the main unit control panel to access to the Fiery menu screen.
- 2** Press **[Fiery]**.
- 3** Press **[Restart Fiery]**.
- 4** Press **[Shut Down]**, and then press **[OK]**.

 **Note**

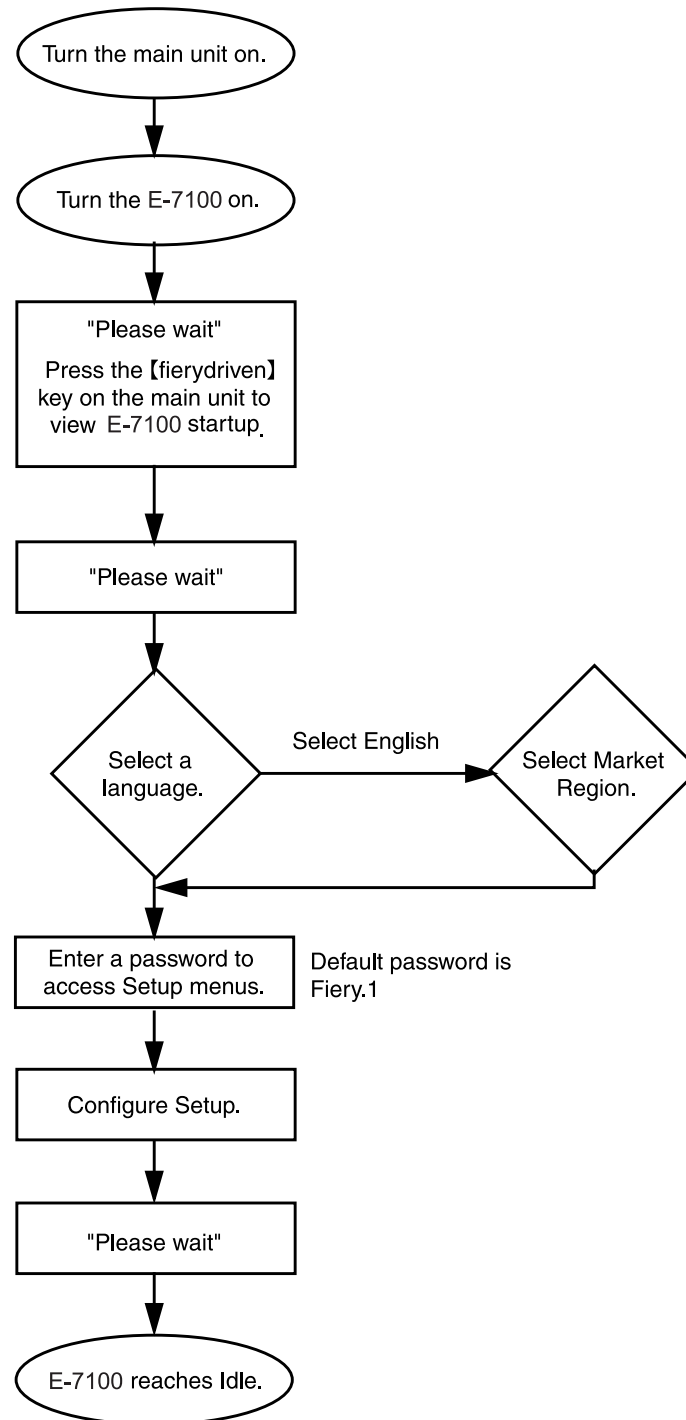
- ☐ Do not turn off the main power switch of the E-7100 when the power indicator is lit. Make sure the main power switch of the E-7100 is not lit, before turning off the main power switch.

To Restart the E-7100

- 1** Press the **[fierydriven]** key on the main unit control panel to access to the Fiery menu screen.
- 2** Press **[Fiery]**.
- 3** Press **[Restart Fiery]**.
- 4** Press **[Restart System]**, and then press **[OK]**.

Power Up Sequence

The following sequence describes the E-7100 initial configuration. If system software is reinstalled, language, password, and Setup will need to be reconfigured.



BKH002S

