

Model: Leo-P2/C2 EFI(E-45A)		Date: 20-Apr-18	No.: RM521001
Subject: New Feature Information: Fiery Updates		Prepared by: Chisato Tsuji	
From: 1st CP Business Department CP Business Center			
Classification:	<input type="checkbox"/> Troubleshooting <input type="checkbox"/> Mechanical <input type="checkbox"/> Paper path <input type="checkbox"/> Product Safety	<input type="checkbox"/> Part information <input type="checkbox"/> Electrical <input type="checkbox"/> Transmit/receive <input type="checkbox"/> Other ()	<input checked="" type="checkbox"/> Action required <input type="checkbox"/> Service manual revision <input type="checkbox"/> Retrofit information <input checked="" type="checkbox"/> Tier 2 <input type="checkbox"/> Tier 0.5

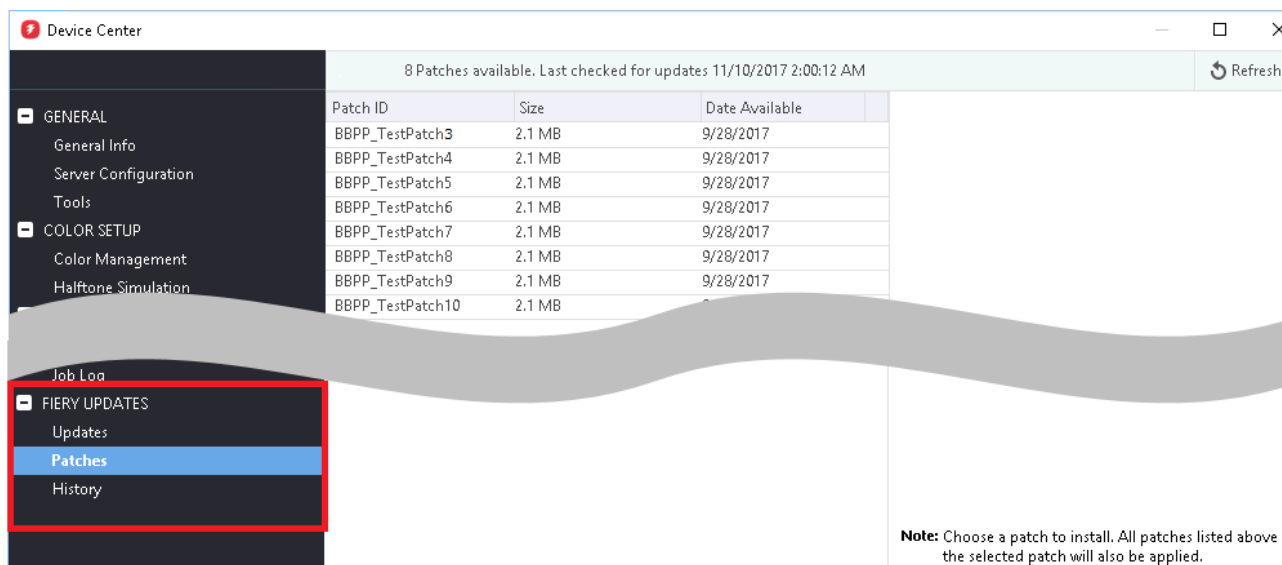
Introduction:

Fiery Updates is a new feature allowing Administrators to install patches on Fiery servers from *Command Workstation 6.x*.

Notifications of updates are displayed in the Job Center and Home screens.

Please introduce your customers of this new feature as this will be beneficial in allowing them to update their Fiery controllers on their own at the desired time (on-demand) and in reducing service visits/cost.

Note: This feature is unnecessary for customers who have the Fiery System Updates set to [Automatically download and install updates.]



Device Center

8 Patches available. Last checked for updates 11/10/2017 2:00:12 AM

Patch ID	Size	Date Available
BBPP_TestPatch3	2.1 MB	9/28/2017
BBPP_TestPatch4	2.1 MB	9/28/2017
BBPP_TestPatch5	2.1 MB	9/28/2017
BBPP_TestPatch6	2.1 MB	9/28/2017
BBPP_TestPatch7	2.1 MB	9/28/2017
BBPP_TestPatch8	2.1 MB	9/28/2017
BBPP_TestPatch9	2.1 MB	9/28/2017
BBPP_TestPatch10	2.1 MB	9/28/2017

FIERY UPDATES

- Updates
- Patches**
- History

Note: Choose a patch to install. All patches listed above the selected patch will also be applied.

Table of contents:

1. Schedule
2. Target Models
3. About Fiery Updates
4. Merit of using Fiery Updates
5. Notes
6. Activating the Fiery Update feature.
7. "Update" Menu
8. "Patches" Menu
9. "History" Menu
10. Updates Available badges

1. Schedule

Fiery Updates will become available from May 7th, 2018 (PDST)

For upcoming models, the feature will be available from launch.

2. Target Models

FS100 or later models enabled of the System Updates feature

On the above indicated date, EFI enables the following models to have access to the Fiery updates feature through the Update server on the internet.

The feature will be available with Command WorkStation 6.x

Windows model

- ☐ Color Controller E-42/82 (Aries-VerUp)
- ☐ Color Controller E-43/83 (Andromeda-P1)
- ☐ Color Controller E-43A/83A (Leo-C1/P1)
- ☐ Color Controller E-45A/85A (Leo-C2/P2)
- ☐ Color Controller E-42B (CH-C1)
- ☐ Color Controller E-44B (CH-C2)
- ☐ Printer Controller EB-32 (BR-C1/P1)
- ☐ Printer Controller EB-34 (BR--C2/P2)

Linux model

- ☐ Color Controller E-23C (MET-C2)
- ☐ Color Controller E-24B (CH-C2)

For models that are not supported of the Fiery Updates feature, the following message will appear when attempted to open the Fiery Updates menu via Command WorkStation.



Fiery Updates is not supported for this Fiery Server model.

3. About "Fiery Updates"

Command WorkStation Ver. 6.x includes the Fiery Updates feature for installing Fiery system software and Fiery API updates and patches.

This allows system software updates to be installed from either the Fiery controller or remote (client) computers.

Fiery API: Fiery API is an Application Programming Interface, used by many newer Fiery features to communicate with the Fiery (instead of harmony). It is already used by Fiery Go, Fiery Ticker, new black Fiery bar, and other features like Fiery updates.

Patches: Patches downloaded with Fiery Updates is no different to those downloaded with the conventional System Updates feature.

4. Merit of using the Fiery Updates

- Once this feature is enabled, while Command WorkStation is launched, updates are searched periodically and notifications of updates are displayed in the Job Center and Home screens.

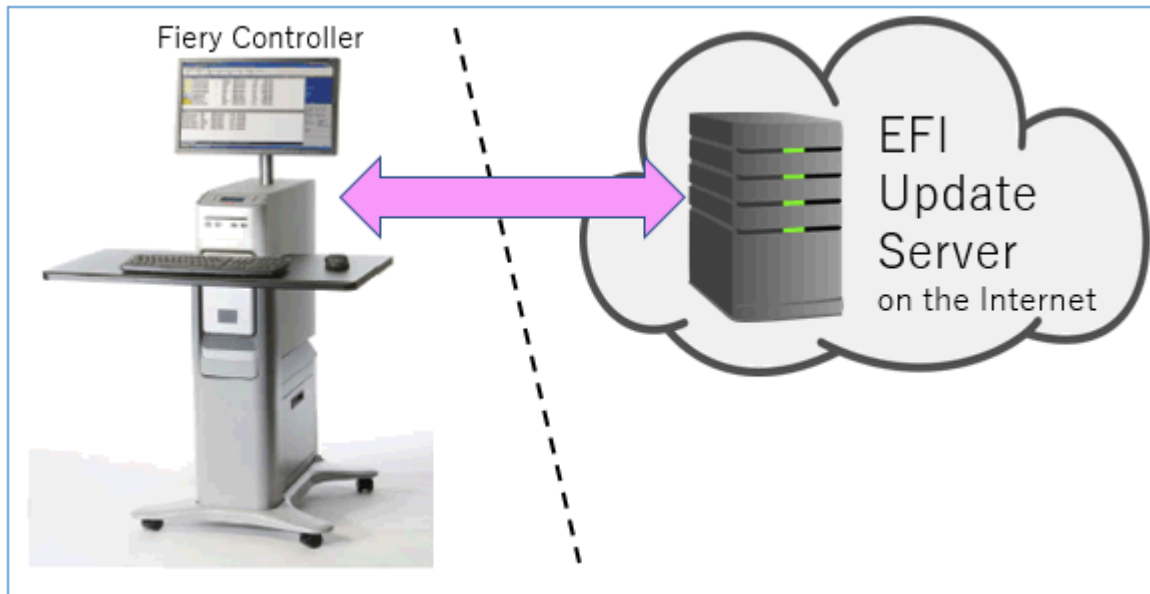


- User Friendly Interface for operation (via Command WorkStation with Administrator privileges)
- Updates and patch installation is possible from Client PC with internet connection.
- (In this case, the Fiery controller does not have to be connected to the internet.)
- Identically to System Updates, only patches that are not applied to the system appear on the list.
- Identically to System Updates, selecting a patch from the list will automatically select its pre-requisite, if any.

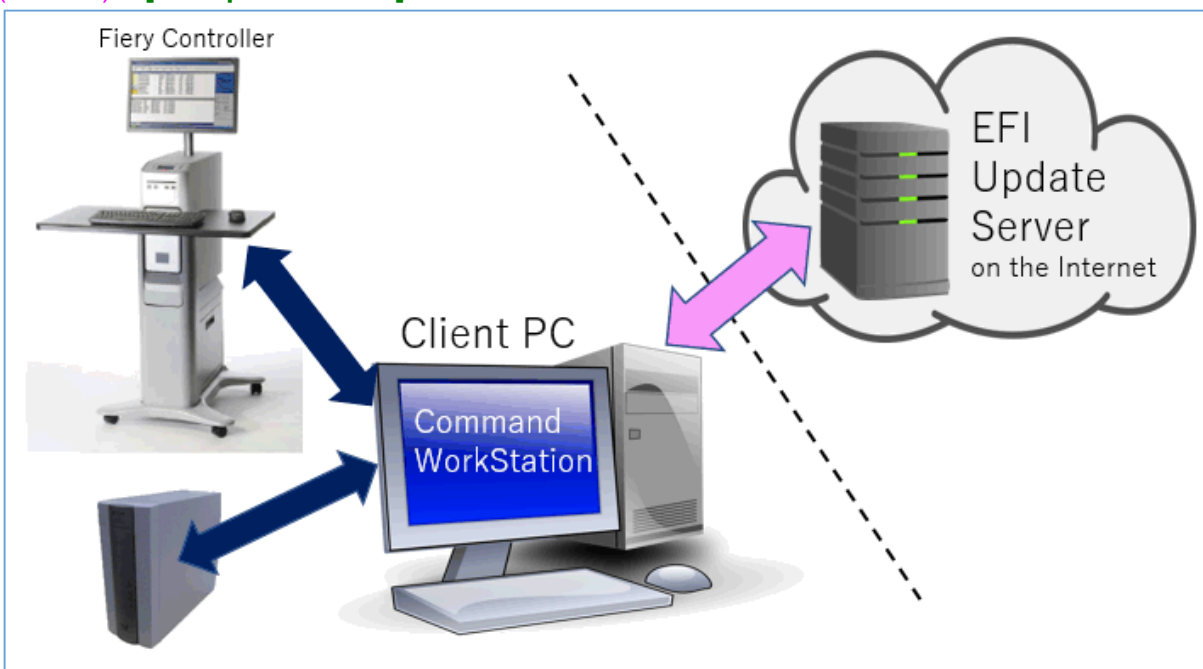
5. Notes

- To use this feature, System Updates must be disabled.
- The computer running Command WorkStation must:
 - Be connected to the Internet
 - Be able to communicate with Fiery controller via LAN.

[Command WorkStation on Fiery controller (Windows model only)] --- (Internet) -- **[EFI Update Server]**

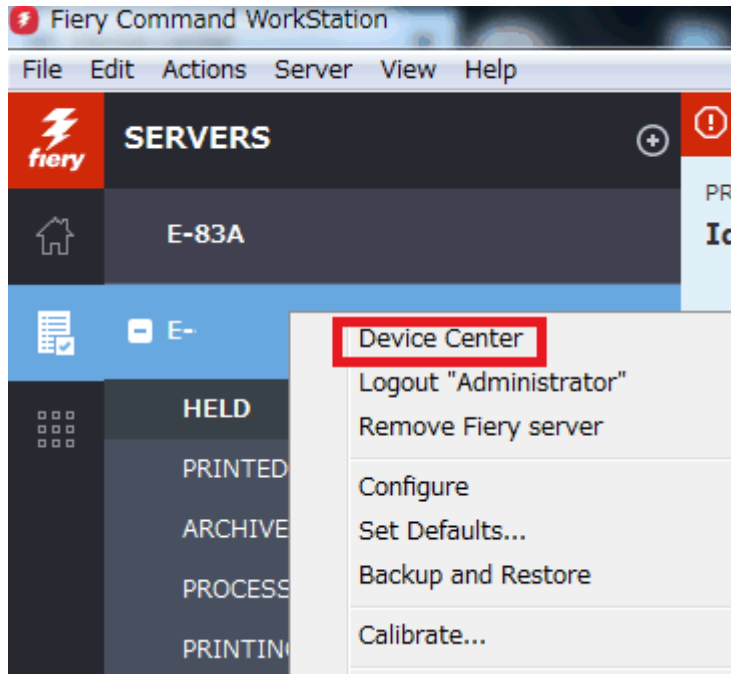


[Fiery controller (Windows or Linux model)] --(local LAN)-- **[Command WorkStation on Client PC]** --- (Internet) -- **[EFI Update Server]**

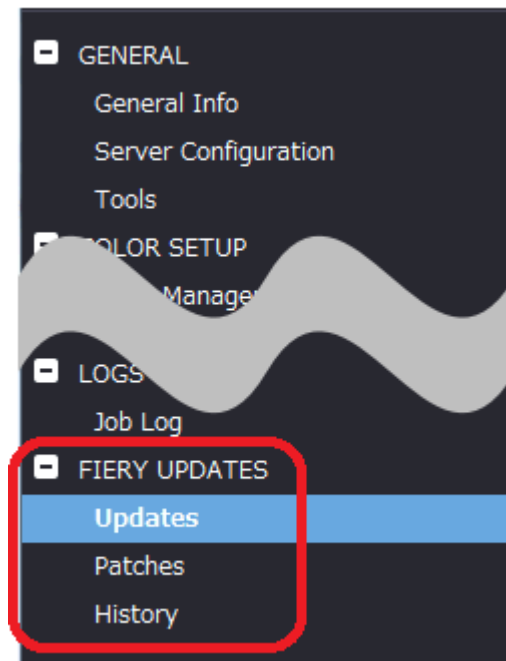


6. Activating the Fiery Update feature

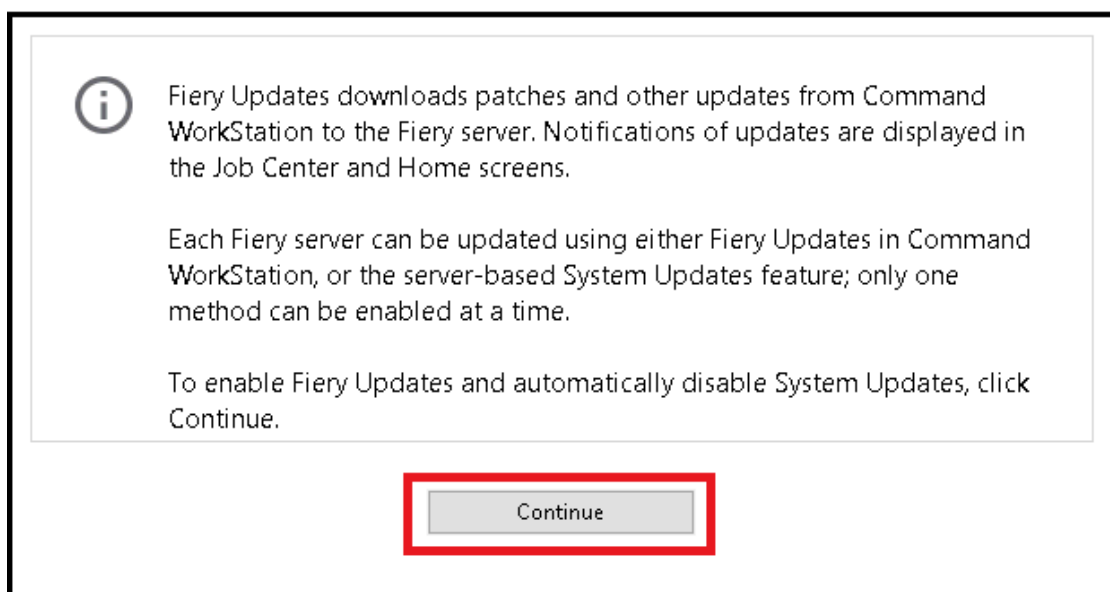
1. Right-click the Fiery controller name in the controllers column list and click **Device Center**.



2. Select **Updates** or **Patches** under Fiery Updates

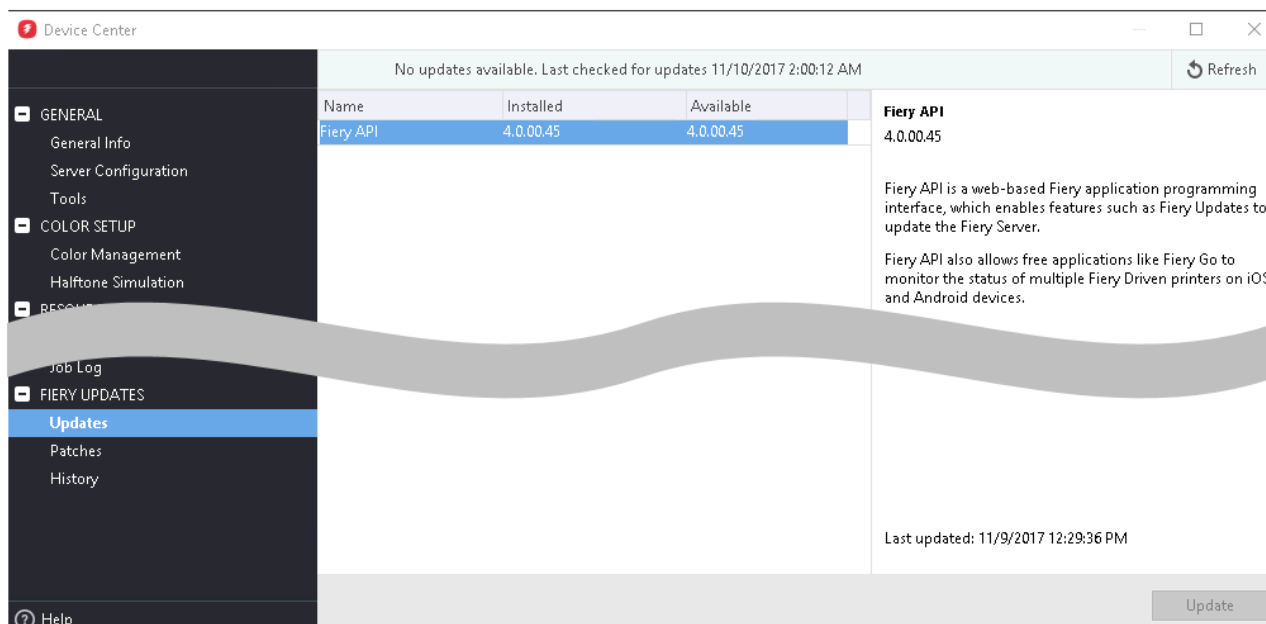


3. On the message screen below, click Continue. This will automatically disable System Updates.



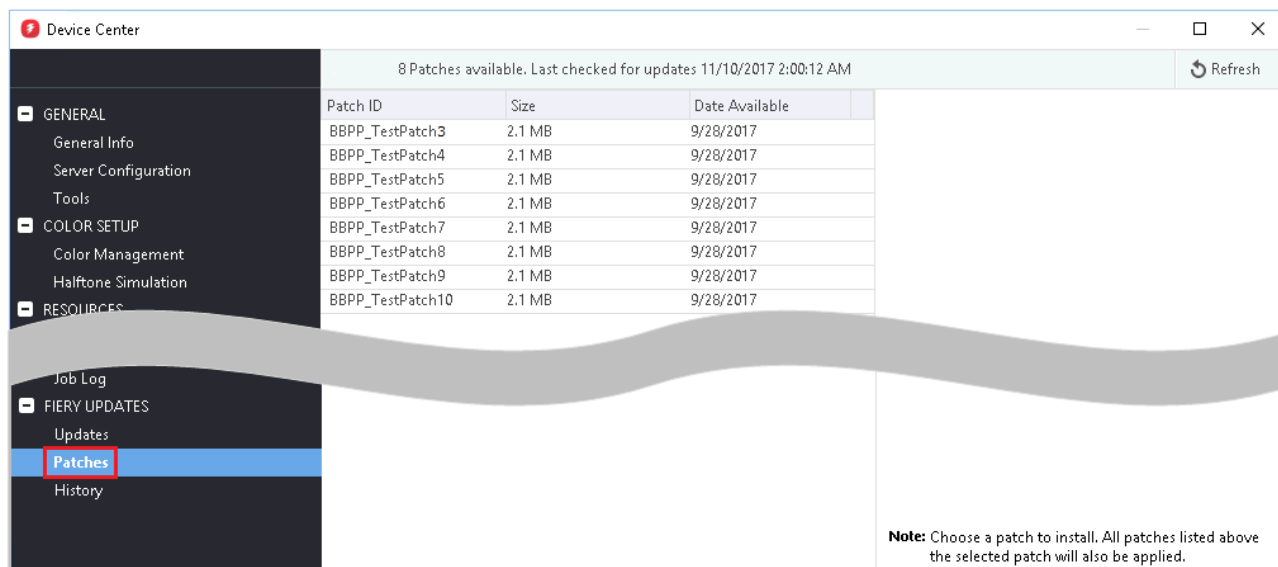
7. "Update" Menu

To view and install the available updates, click Updates under Fiery Updates, then click Update in the right pane for each update you choose to install.

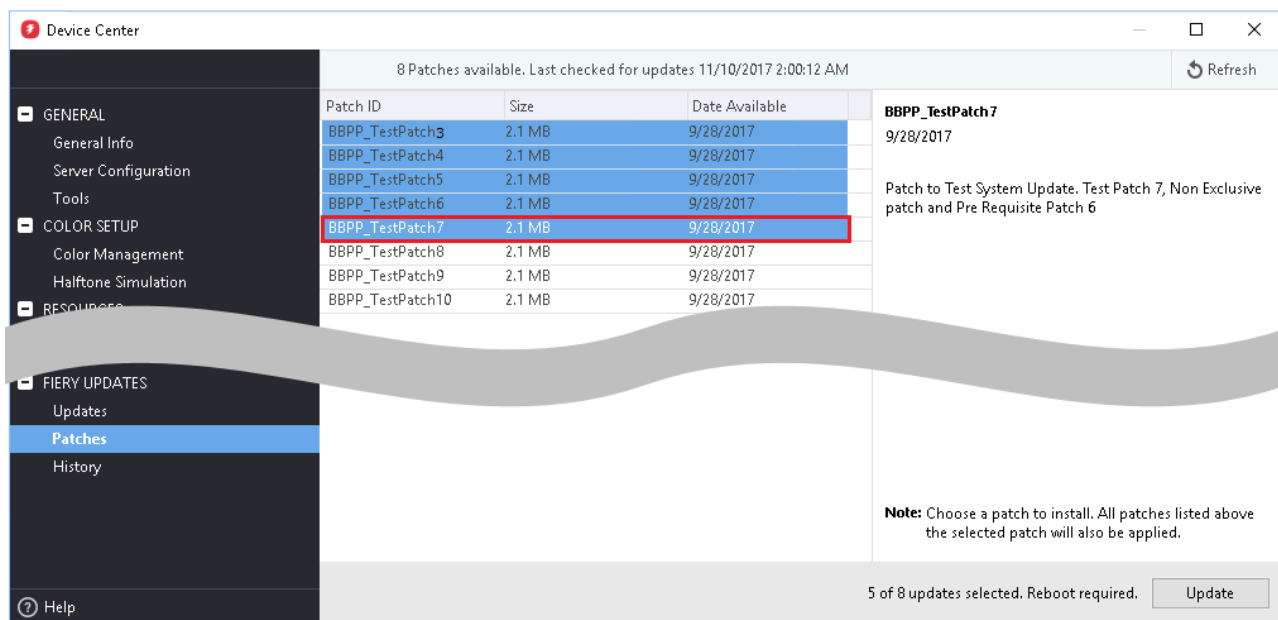


8. "Patches" Menu

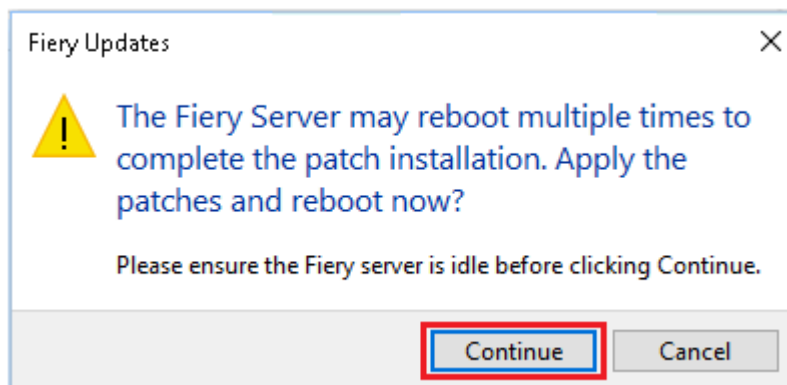
1. To view the available patches, click Patches under Fiery Updates.



2. When you select a patch the pre-requisite patches are also automatically selected, if any. For example, selecting Patch #7 will automatically select its pre-requisite Patches #3-6. Click Update.

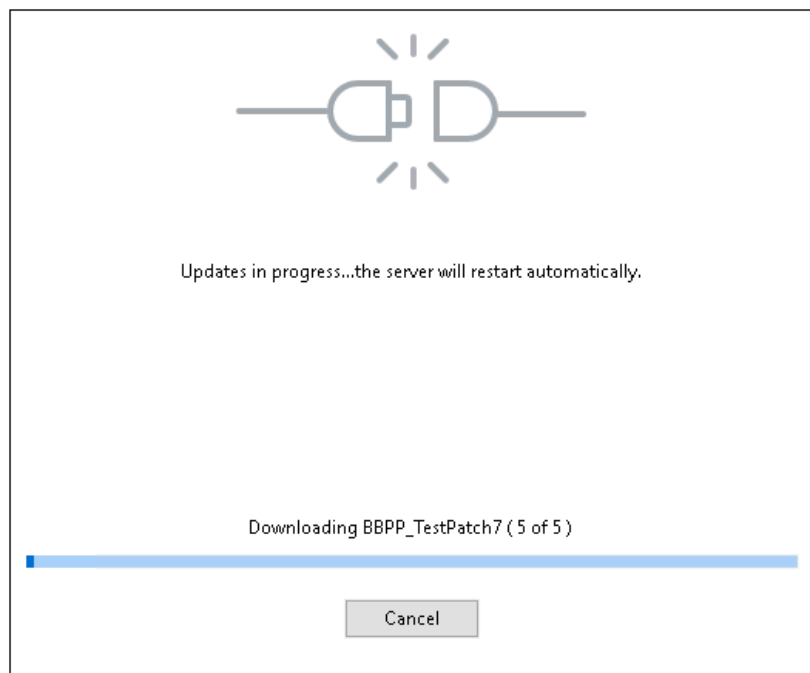


3. Click Continue in the confirmation message screen below.



Various stages of the update process and a progress bar appear in the Disconnect screen as follows:

- Initializing
- Downloading Updates
- Transferring
- Installing

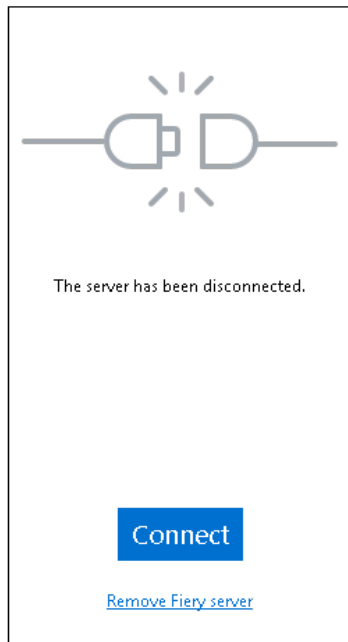


Model: Leo-P2/C2 EFI(E-45A)

Date: 20-Apr-18

No.: RM521001

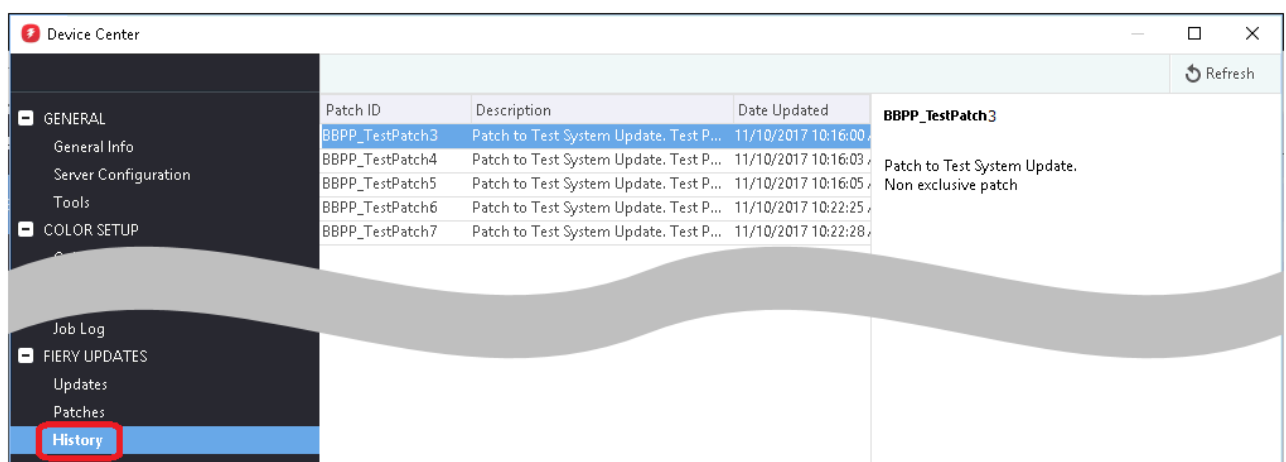
The Fiery controller will reboot as necessary between exclusive patches.
(If five patches are being installed, then up to five reboots may occur).



Note: After the Fiery controller reboots, Command WorkStation will not automatically reconnect. The Administrator must click Connect in order to reconnect to the Fiery controller.

9. "History" Menu

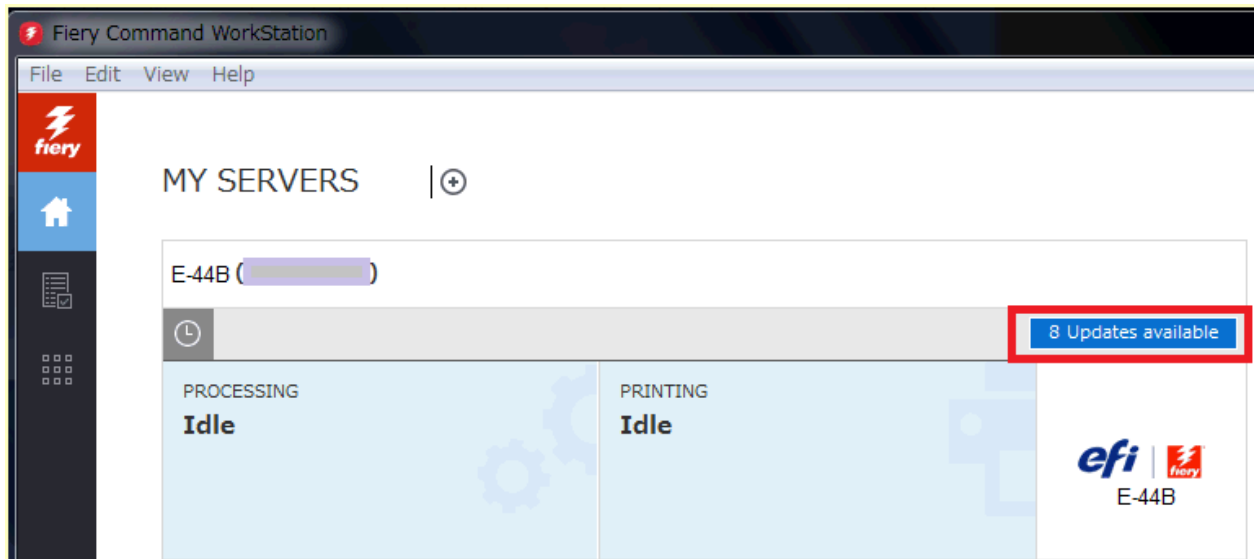
After the system reboots automatically for a number of times necessary according to the updates installed, reconnect to your Fiery controller via Command WorkStation and confirm the update history in the History menu.



10. Updates Available badges

When Fiery Updates is enabled for the Fiery server model and patches are available, the badges will display in the Job Center and the Home Screen. These badges include the number of patches available in the patch tab. The count does not include any Fiery API updates in the Updates tab.

The user can click on this “Updates available” badge to be taken directly to the Device Center > Fiery Updates > Patches tab.



Model: LeoP2/C2 Color Controller E-45A		Date:7-Apr-20	No.: RM521002
Subject: How to maintain units upgraded from E-45A to E-46A with the upgrade kit		Prepared by: Ch. Tsuji	
From: Service Planning Sect., Global Engineering Support			
Classification:	<input checked="" type="checkbox"/> Troubleshooting <input type="checkbox"/> Mechanical <input type="checkbox"/> Paper path <input type="checkbox"/> Product Safety	<input type="checkbox"/> Part information <input type="checkbox"/> Electrical <input type="checkbox"/> Transmit/receive <input type="checkbox"/> Other ()	<input checked="" type="checkbox"/> Action required <input type="checkbox"/> Service manual revision <input type="checkbox"/> Retrofit information <input checked="" type="checkbox"/> Tier 2 <input type="checkbox"/> Tier 0.5

This bulletin provides information on how to maintain E-46A units upgraded from E-45A with the upgrade kit.

Target units:

Target units are those of the following hardware and software combination:

Hardware: E-45A

Model Code: M52101

S/N: 505YAMXXXXX (Y: Year, M: Month)

Software: E-46A (Upgraded with the “EFI Version Up Kit to E-46A”)

Detail:

For units upgraded of the software from E-45A to E-46A, the hardware will remain as E-45A. Accordingly, refer to the E-45A Field Service Manual and Parts Catalog when replacing hardware components.

	Reference document	
	FSM	Parts Catalog
Hardware replacement	E-45A	E-45A
New software features, General operation	E-46A	
System maintenance (including system re- installation, backup and restore) Spare DVDs / Service Kit	E-46A	E-46A