

Model: Model-J Duplex Unit		Date: 11-Aug-03	No.: MG571001
Modified Article: Cover - Duplex Driver		Prepared by: H.Taguchi	
From: 1st Tech. Support Sec. Service Support Dept.			
Reason for Modification:	<input type="checkbox"/> Parts catalog correction <input type="checkbox"/> To facilitate assembly <input checked="" type="checkbox"/> Part standardization	<input type="checkbox"/> Vendor change <input type="checkbox"/> To improve reliability <input type="checkbox"/> Other	<input type="checkbox"/> To meet standards ()

The following part has been changed due to parts standardization with the next model.

Old part number	New part number	Description	Q'ty	Int	Page	Index	Note
G5713855	G3483855	Cover – Duplex Driver	1 – 1	O/O	11	8	

RCL (Japan) Production

Model Name	Destination	Code	Serial Number
Duplex Unit Type 3800C	USA, Europe, Asia.	G571-17	P6527101004
	Europe, etc.	G571-26	4H19220001

Model: Model-J Duplex Unit		Date: 11-Aug-03	No.: MG571002
Modified Article: Inverter Unit		Prepared by: H.Taguchi	
From: 1st Tech. Support Sec. Service Support Dept.			
Reason for Modification:	<input type="checkbox"/> Parts catalog correction <input checked="" type="checkbox"/> To facilitate assembly <input type="checkbox"/> Part standardization	<input type="checkbox"/> Vendor change <input type="checkbox"/> To improve reliability <input type="checkbox"/> Other	<input type="checkbox"/> To meet standards ()

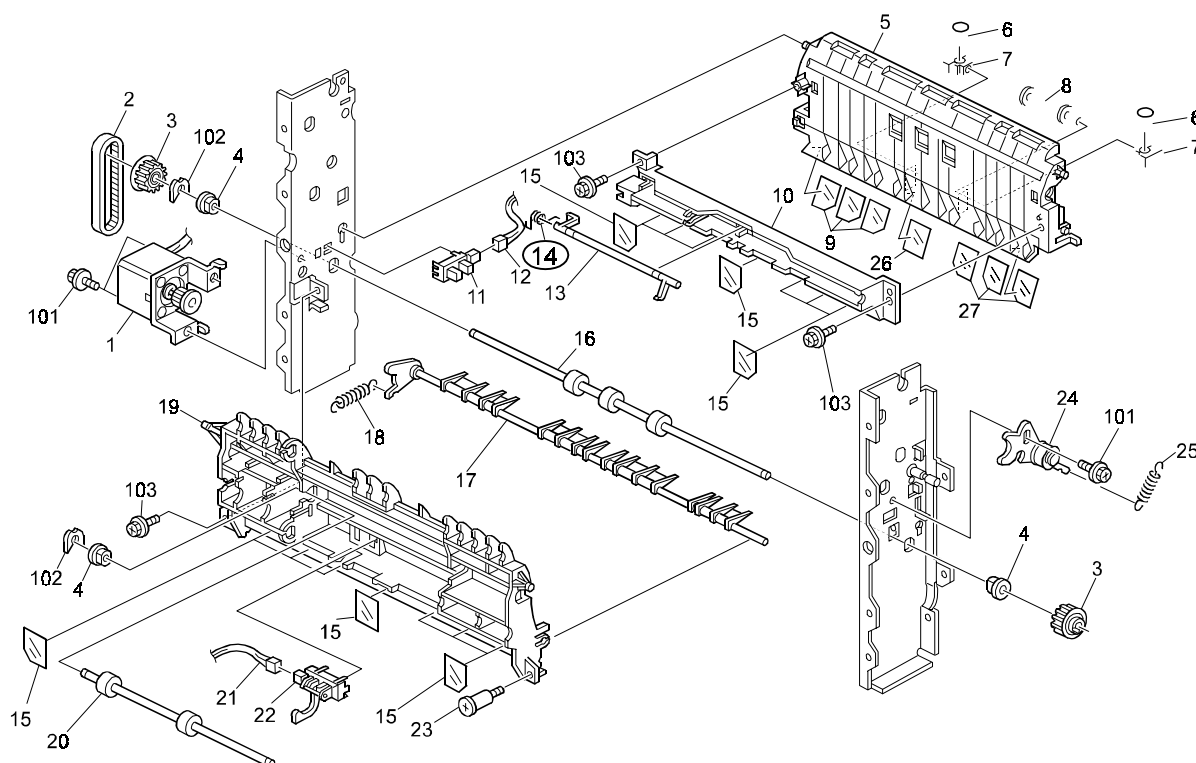
The following part has been changed to facilitate assembly.

Old part number	New part number	Description	Q'ty	Int	Page	Index	Note
G5710250	G5710251	Inverter Unit	1 – 1	O/O	5	*	

Model: Model-J Duplex Unit		Date: 27-Aug-03	No.: MG571003
Modified Article: Torsion Spring		Prepared by: H.Taguchi	
From: 1st Tech. Support Sec. Service Support Dept.			
Reason for Modification:	<input type="checkbox"/> Parts catalog correction <input type="checkbox"/> To facilitate assembly <input type="checkbox"/> Part standardization	<input type="checkbox"/> Vendor change <input checked="" type="checkbox"/> To improve reliability <input type="checkbox"/> Other	<input type="checkbox"/> To meet standards ()

The shape and attachment position of the Torsion Spring have been changed to further ensure proper movement of the sensor feeler.

Old part number	New part number	Description	Q'ty	Int	Page	Index	Note
AA066585	AA066593	Torsion Spring – Paper Feed Sensor	1 – 1	X/O	7	14	



RCL (Japan) Production

Model Name	Destination	Code	Serial Number
Duplex Unit Type 3800C	USA, Europe, Asia.	G571-17	P6516700001
	Europe, etc.	G571-26	4H18810001

Reissued: 18-Dec-03

Model: Model-J Duplex Unit	Date: 28-Aug-03	No.: MG571004a
----------------------------	-----------------	----------------

MB Correction

The items in bold italics have been corrected or added.

Modified Article: Inverter Unit		Prepared by: Hideki Taguchi	
From: 1st Tech. Support Sec. Service Support Dept.			
Reason for Modification:	<input type="checkbox"/> Parts catalog correction	<input type="checkbox"/> Vendor change	<input type="checkbox"/> To meet standards ()
	<input type="checkbox"/> To facilitate assembly	<input type="checkbox"/> To improve reliability	
	<input checked="" type="checkbox"/> Part standardization	<input type="checkbox"/> Other	

The Inverter Unit for the J-P1 has been standardized with the unit for the J-P2.

Note: The unit cover modification announced in MB #MG571001 made the two units identical, but at that time the unit P/N change below was not announced.

Old part number	New part number	Description	Q'ty	Int	Page	Index	Note
G5710251		Invertor Unit	1 – 1	O/O	5	*	
	→ G3480250	Reverse Unit: Duplex: Ass'y					



Part Change Information List

Date: May 31, 2010

Model	Code	PCIL Nr.	PCIL Correction	Old part number	New part number	Description	Old Q'ty	New Q'ty	Int	3DPC	Page	Index	Set	Set Int	RTB	Note	Ref. Nr.	ECN Nr.
J Duplex Unit	G571	201005		G5714811	B1804803	LINK:DC SOLENOID:ASS'Y	1	1	O/O		5	4					V0903246	



Part Change Information List

Date: February 29, 2012

Model	Code	PCIL Nr.	PCIL Correction	Old part number	New part number	Description	Old Q'ty	New Q'ty	Int	3DPC	Page	Index	Set	Set Int	RTB	Note	Ref. Nr.	ECN Nr.
J Duplex Unit	G571	201202		G5715540	B1805400	HARNESS:TRANSPORT UNIT:DRAWER	1	1	X/O		11	15					V1104050	



Part Change Information List

Date: June 28, 2013

Model	Code	PCIL Number	PCIL Correction	Old part number	New part number	Description	Old Q'ty	New Q'ty	Int	3DPC	Page	Index	Set	Set Int	RTB	Note	Ref Number	ECN Number
J Duplex Unit	G571	201306		G3480250	G3820251	REVERSE UNIT:DUPLX:ASS'Y	1	1	O/O		5	*					V1202499	11110797