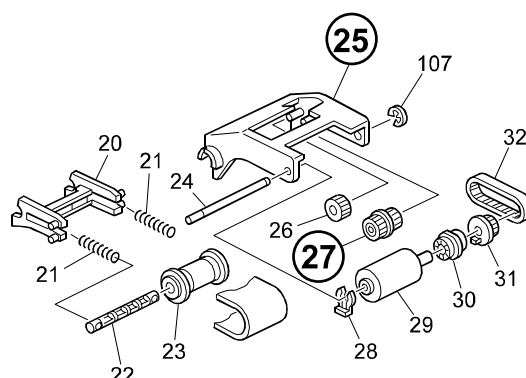


Model: Russian-C ARDF (DF69)		Date: 14-Nov-03	No.: MA858001
Modified Article: Pick up holder and Pulley		Prepared by: Y. Ohtani	
From: 1st Tech. Support Sec. Service Support Dept.			
Reason for Modification:	<input type="checkbox"/> Parts catalog correction <input type="checkbox"/> To facilitate assembly <input checked="" type="checkbox"/> Part standardization	<input type="checkbox"/> Vendor change <input type="checkbox"/> To improve reliability <input type="checkbox"/> Other	<input type="checkbox"/> To meet standards ()

The following have been changed for the Russian-SC to further ensure that the shaft of the Pickup Holder for the Pulley is not damaged. This change has also been applied to the Russian-C for purposes of parts standardization.

Old part number	New part number	Description	Q'ty	Int	Page	Index	Note
A8592151	G4123821	Holder - Pick Up	1	X/X	7	25	
A8592168	G4123831	Pulley - 22Z	1	X/X	7	27	

Note: When installing for the first time, the above parts must be replaced together as a set.



[Dongan (China) Production]

MODEL NAME	DESTINATION	CODE	SERIAL NO.
DF69	All RICOH subsidiaries, NRG, SAVIN	A858-17	H2637800001
DF69	Infotec	A858-26	Service Parts Only
DF69	LANIER	A858-55	Service Parts Only

Model: Russian-C ARDF (DF69)		Date: 4-Jul-06	No.: MA858002
Modified Article: Belt Unit		Prepared by: S. Tomoe	
From: 1st Tech. Support Sec. Service Support Dept.			
Reason for Modification:	<input type="checkbox"/> Parts catalog correction <input type="checkbox"/> Vendor change <input type="checkbox"/> Other <input type="checkbox"/> To facilitate assembly <input type="checkbox"/> To improve reliability <input checked="" type="checkbox"/> To meet standards (RoHS compliant) <input type="checkbox"/> Part standardization <input type="checkbox"/> Product Safety		

Old part number	New part number	Description	Q'ty	Int	Page	Index	Note
A8592100	B3862105	Belt Unit Paper Feed		X/O	7	38	1

Change: The materials for these parts were changed.

Reason: To comply with the RoHS Directive.

Note: The functions of these parts were not changed.

IMPORTANT:

- The materials for the parts were changed before the part numbers were changed. To make sure the correct parts are used on the correct machines, please handle the parts as follows:

Parts with the **old** P/N: **Non-RoHS** compliant parts
 Parts with the **new** P/N: **RoHS** compliant parts

	RoHS Compliant Parts	Non-RoHS Compliant Parts
RoHS Compliant Machines	OK	<u>DO NOT USE</u>
Non-RoHS Compliant Machines	OK	OK

- **Continue using** non-RoHS compliant parts on non-RoHS compliant machines **until the stock of these parts runs out**. Then, start using RoHS compliant parts on the non-RoHS compliant machines.

- **DO NOT use** non-RoHS compliant parts on RoHS compliant machines.

Note: This is to make sure that all machines are in full compliance with the RoHS Directive.