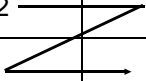


Model	DF 43	Volt/Hz	Date of Modification	Serial Number
Modified Article		No serial numbrr cut in infotion		
Reason for Modification	Parts catalog correction			

The following should be corrected. Please correct your part catalog.

1. The following parts have been modified.

Old Part Number	New Part Number	Description	Q'ty	Index No.	Page
A6281236	A6281261	Original Entrance Guide	1	9	3
A6282167	A6281262	Pad - Original Entrance Guide	1	10	3
<b>A6281217</b>	<b>A6281257</b>	Original Feed Belt	1	18	5
AA063144	A6281596	Left Transport Roller Spring	4	38	5
A6281582		Rear Spring - Exit Roller	2 → 0	23	7
		G0101106	2 → 4	40	7
<b>A6281511</b>	<b>A6281512</b>	Separation Roller	1	5	7
A6281572	A6281566	Rear Bushing - Exit Roller	2	22	7
A6281581	A6281585	Lower Exit Roller	2	24	7
A6281571	A6281565	Front Bushing - Exit Roller	2	25	7

2. The following parts have been added.

New Part Number	Description	Q'ty	Index No.	Page	Fig. no.
A6282170	Lock Lever - Left Cover	1	38	3	1
A6281174	Right Grounding Plate - Hinge Bracket	2	39	3	1
A6281177	Left Grounding Plate - Hinge Bracket	1	40	3	1
04504010B	Tapping Screw - MX10		101	3	1
A6281176	Grounding Plate - Base	1	42	9	2
A6281829	Collar - 9X15X3	1	43	9	2

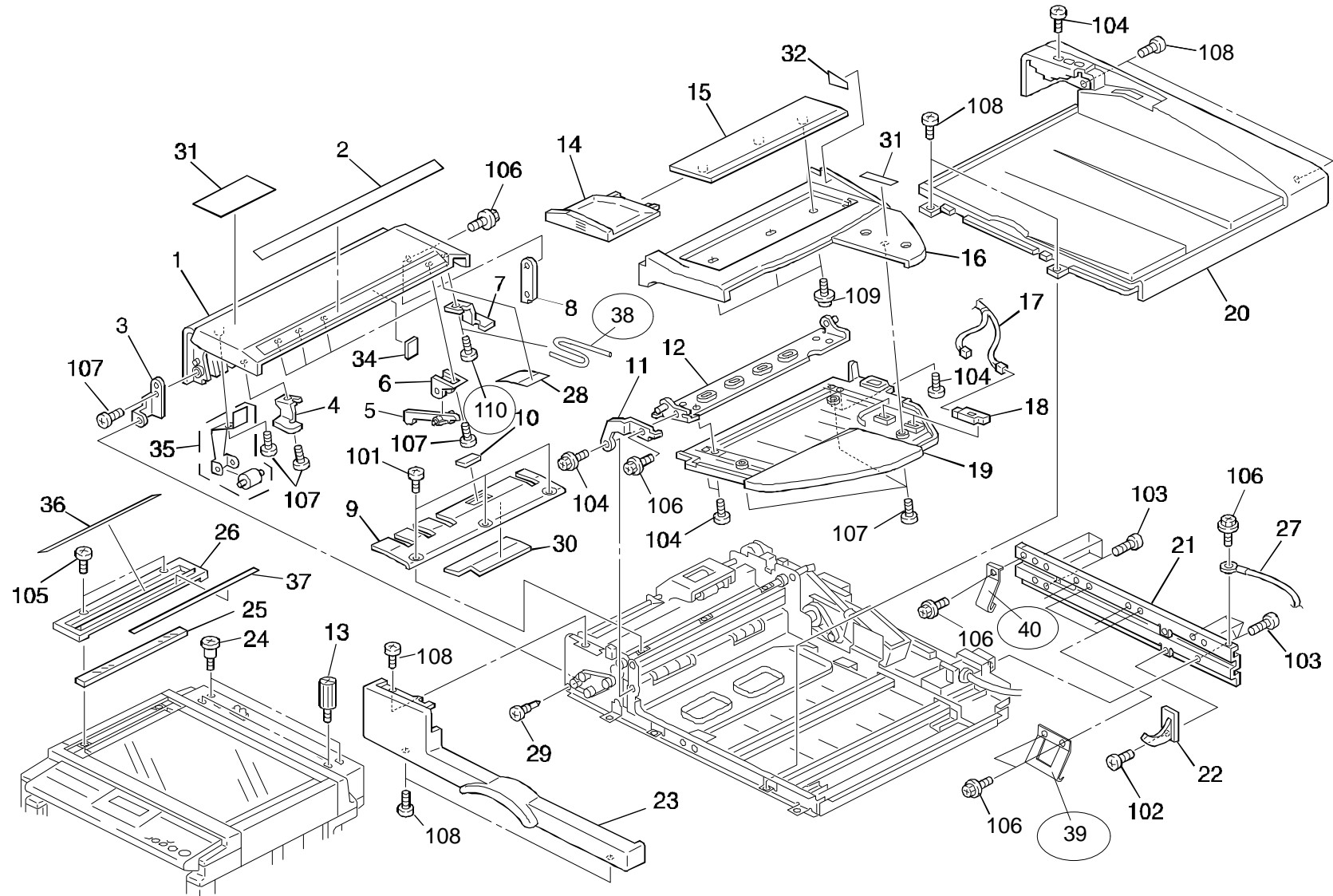


Fig. 1

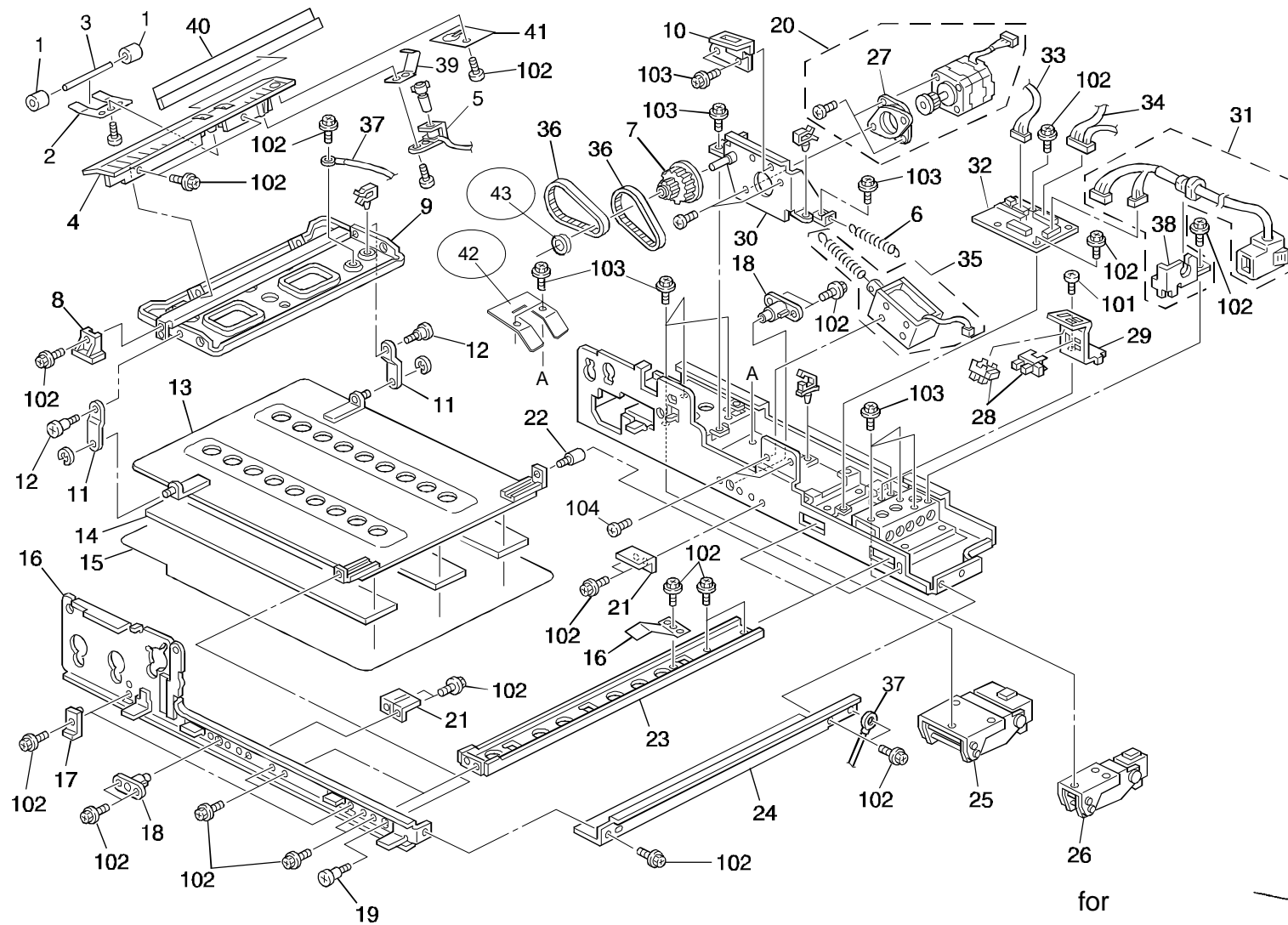


Fig. 2

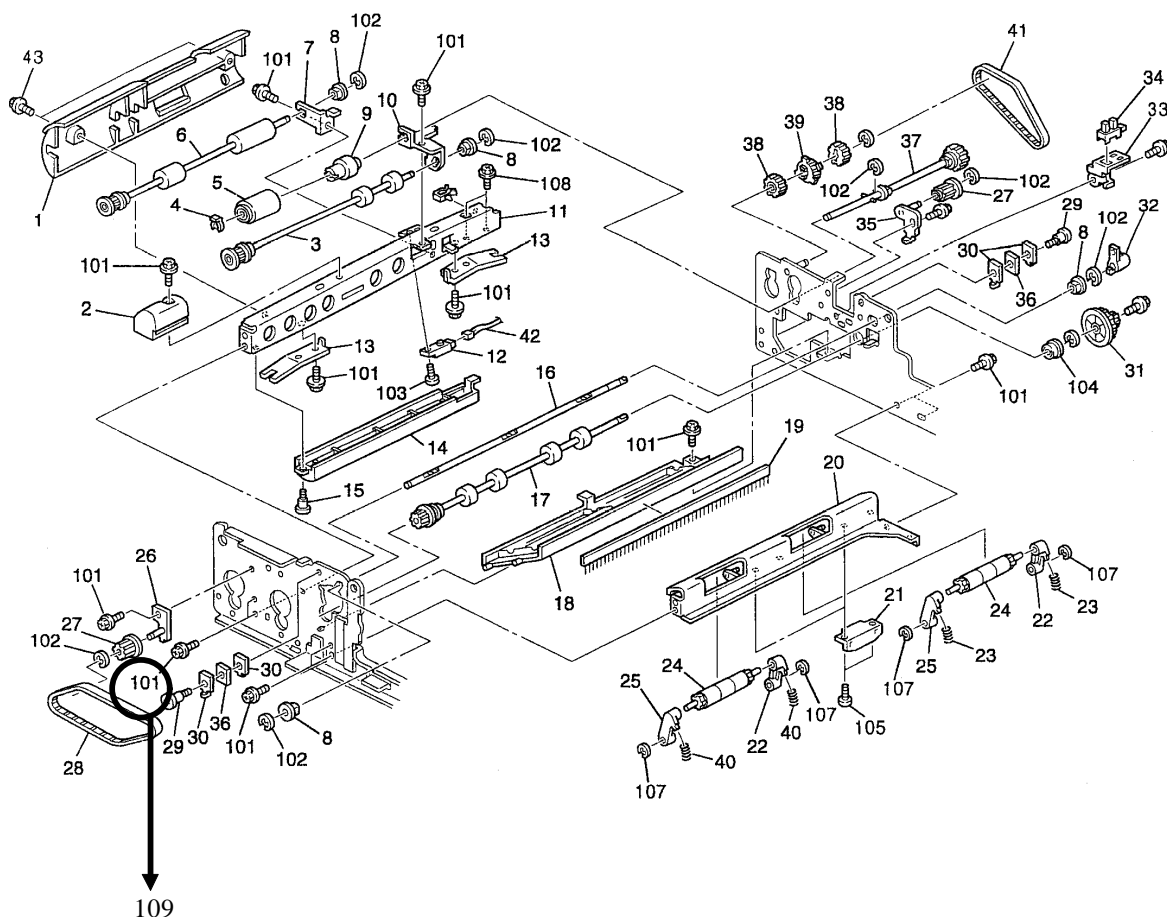
for

  
S. Fujii, General Manager  
2nd. Field Information Dept. QAC

Model: DF43		Date: 28-Feb-97	No: 002	1/1
Modified Article: Tapping Screw			Prepared by: K. Ugaeri	
From: QAC 2nd Field Information Dept.			Checked by: S. Fujii	
Reason for Modification:	<input type="checkbox"/> Parts catalog correction <input type="checkbox"/> Vendor change <input type="checkbox"/> To meet standards <input type="checkbox"/> To facilitate assembly <input type="checkbox"/> To improve reliability    (    ) <input checked="" type="checkbox"/> Other			

The Pull Out Guide (index 1 - A628 1541) may be bent by coming in contact with the screws. The length of the screws has been changed from 6 mm to 5 mm

Old part number	New part number	Description	Qty	Int	Page	Index	Note
04513006B		Tapping Screw - M3 x 6	4 - 0		6	101	
	04513005B	Tapping Screw - M3 x 5	0 - 4		6	109	



Model: DF43		Date: 28-Feb-97	No: 003	1/1
Modified Article: Decal			Prepared by: K. Ugaeri	
From: QAC 2nd Field Information Dept.			Checked by: S. Fujii	
Reason for Modification:	<input type="checkbox"/> Parts catalog correction		<input type="checkbox"/> Vendor change	<input type="checkbox"/> To meet standards
	<input type="checkbox"/> To facilitate assembly		<input type="checkbox"/> To improve reliability	(      )
	<input checked="" type="checkbox"/> Other			

A decal has been newly added to advise the operator to clean the exposure glass when black stripes or black dots appear on the copied paper.

Old part number	New part number	Description	Qty	Int	Page	Index	Note
	A6286121	Decal - Contact Glass	0 - 1				

\* This decal has been put in the carton box.

If necessary, please put it on the cover of the DF.



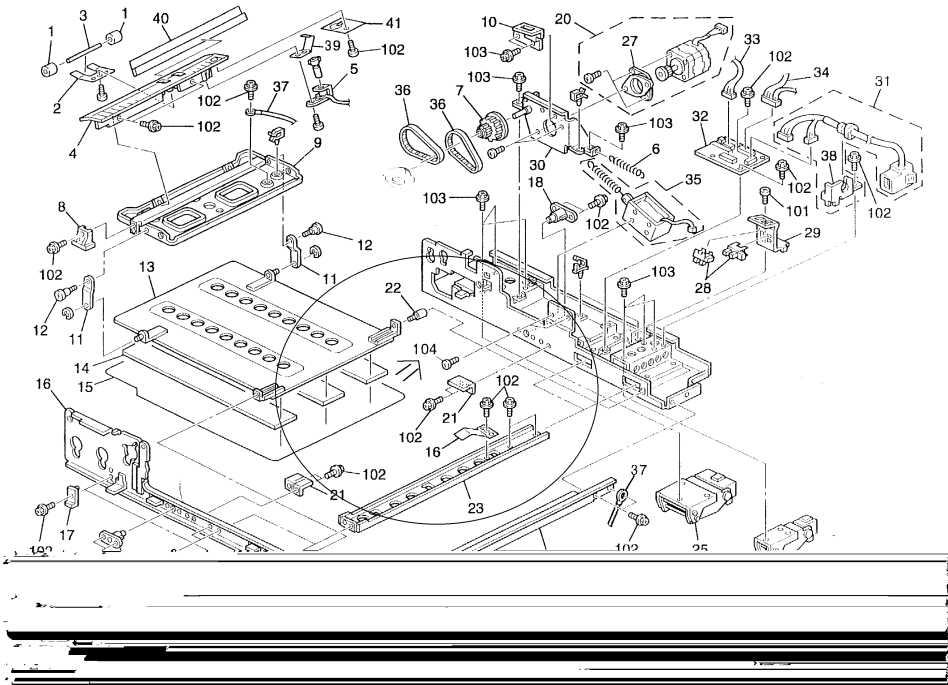
Model: DF43		Date: 28-Feb-97	No: 004	1/1
Modified Article: Photosensor			Prepared by: K. Ugaeri	
From: QAC 2nd Field Information Dept.			Checked by: S. Fujii	
Reason for Modification:	<input type="checkbox"/> Parts catalog correction <input type="checkbox"/> Vendor change <input type="checkbox"/> To meet standards <input type="checkbox"/> To facilitate assembly <input checked="" type="checkbox"/> To improve reliability    (      ) <input type="checkbox"/> Other			

The photosensor will be changed from the short-range type (up to 10 mm) to a long-range type (up to 20 mm) to prevent the document sensor from not detecting an original. The problem may happen if the original is bent further away from the sensors.

Old part number	New part number	Description	Qty	Int	Page	Index	Note
AW010066	AW010074	Photosensor - PS - R50D1 - B	2 - 2		2	18	

Model: DF43		Date: 19-Mar-97	No: 5
Modified Article: Philips Pan Head Screw		Prepared by: K.Ugaeri	
From: QAC 2nd Field Information Dept.		Checked by: S. Fujii	
Reason for Modification:	<div><input checked="" type="checkbox"/> Parts catalog correction</div> <div><input type="checkbox"/> Vendor change</div> <div><input type="checkbox"/> To meet standards</div> <div><input type="checkbox"/> To facilitate assembly</div> <div><input type="checkbox"/> To improve reliability</div> <div>(       )</div> <div><input type="checkbox"/> Part Standardization</div> <div><input type="checkbox"/> Other</div>		

Old part number	New part number	Description	Qty	Int	Page	Index	Note
03130040	A5902214	Philips Pan Head Screw - M3x4	2-2		9	104	





Model: DF43		Date: 19-Mar-97	No: 6
Modified Article: Slider Guide Screw		Prepared by: K.Ugaeri	
From: QAC 2nd Field Information Dept.		Checked by: S. Fujii	
Reason for Modification:	<input type="checkbox"/> Parts catalog correction <input type="checkbox"/> Vendor change <input type="checkbox"/> To meet standards <input type="checkbox"/> To facilitate assembly <input type="checkbox"/> To improve reliability    (      ) <input type="checkbox"/> Part Standardization <input checked="" type="checkbox"/> Other		

To prevent the original holder bracket (A6281613) from removing, the length of the slider guide screw has been changed from 6 mm to 16 mm from March production '97.

Old part number	New part number	Description	Qty	Int	Page	Index	Note
A4992389	AA143347	Slider Guide Screw	1-1		9	22	

Model: DF43		Date: 15-Apr-98	No: 7
Modified Article: Decal-Original Scale (A4)		Prepared by: K.Ugaeri	
From: QAC Field Information Dept.			
Reason for Modification:	<input checked="" type="checkbox"/> Parts catalog correction <input type="checkbox"/> Vendor change <input type="checkbox"/> To meet standards <input type="checkbox"/> To facilitate assembly <input type="checkbox"/> To improve reliability    (     ) <input type="checkbox"/> Part standardization <input type="checkbox"/> Other		

The following part is missing. Please correct your part catalog.

Old part number	New part number	Description	Qty	Int	Page	Index
	A6286011	Decal – Original Scale (A4)			3	37

\* Current part number A6286061 is a decal for LT size.