

Model: <b>ARDF (DF3060)</b>	Date: 12-Sep-11	No.: RD578001
-----------------------------	-----------------	---------------

Subject: Firmware Release Note: ARDF (DF3060)		Prepared by: T. Nihei	
From: 1st Overseas Tech Support Sec., 1st PQM Dept.			
Classification:	<input type="checkbox"/> Troubleshooting	<input type="checkbox"/> Part information	<input type="checkbox"/> Action required
	<input type="checkbox"/> Mechanical	<input type="checkbox"/> Electrical	<input type="checkbox"/> Service manual revision
	<input type="checkbox"/> Paper path	<input type="checkbox"/> Transmit/receive	<input type="checkbox"/> Retrofit information
	<input type="checkbox"/> Product Safety	<input checked="" type="checkbox"/> Other (Firmware)	<input checked="" type="checkbox"/> Tier 2

This RTB has been issued to announce the firmware release information for the **ARDF (DF3060)**.

Version	Program No.	Effective Date	Availability of RFU
01.000:01	D5785300B	1st Mass production	Available

**Note: Definition of Availability of RFU via @Remote**

“Available” The firmware can be updated via RFU or SD card.

“Not available”: The firmware can only be updated via SD card.

Version	Modified Points or Symptom Corrected
01.000:01	1st Mass production

Model: ARDF (DF3060)		Date: 17-Feb-12	No.: RD578002
Subject: Parts Catalog Correction (Decal)		Prepared by: T. Nihei	
From: 2nd Tech Service Sect., MFP/P Tech Service Dept.			
Classification:	<input type="checkbox"/> Troubleshooting <input checked="" type="checkbox"/> Part information <input type="checkbox"/> Action required <input type="checkbox"/> Mechanical <input type="checkbox"/> Electrical <input type="checkbox"/> Service manual revision <input type="checkbox"/> Paper path <input type="checkbox"/> Transmit/receive <input type="checkbox"/> Retrofit information <input type="checkbox"/> Product Safety <input type="checkbox"/> Other (      ) <input type="checkbox"/> Tier 2		

Old part number	New part number	Description	Q'ty	Int	Page	Index	Note
D5786011	D5786012	DECAL:MISFEED REMOVAL	1-1	X/X	5 17	1 4	Set as X/O
D5786061	D5786062	DECAL::ORIGINAL:MANY LANGUAGES	1-1	X/X	5 17	43 3	

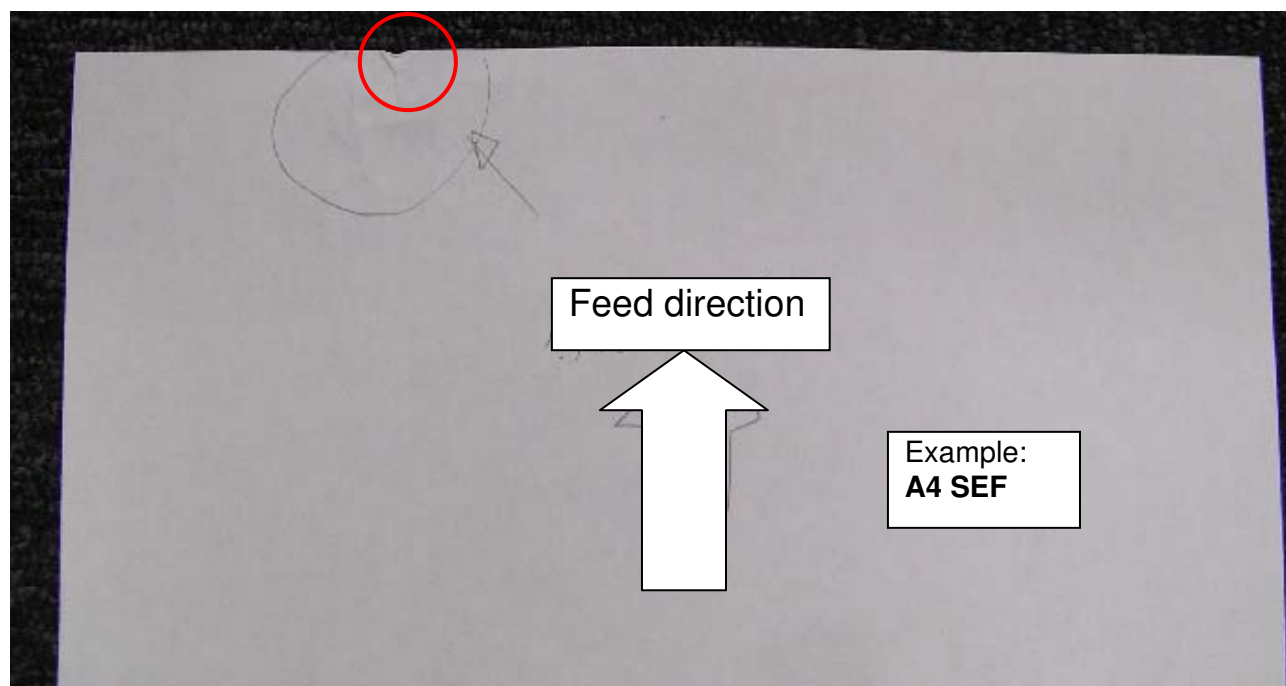
**Change:** The illustrations on these decals were changed.

**Reason:** To further increase usability.

Model: ARDF (DF3060)		Date: 29-Mar-12	No.: RD578003
Subject: A small bend or tear on the original		Prepared by: T. Nihei	
From: 2nd Tech Service Sect., MFP/P Tech Service Dept.			
Classification:	<input checked="" type="checkbox"/> Troubleshooting <input type="checkbox"/> Mechanical <input type="checkbox"/> Paper path <input type="checkbox"/> Product Safety	<input type="checkbox"/> Part information <input type="checkbox"/> Electrical <input type="checkbox"/> Transmit/receive <input type="checkbox"/> Other (     )	<input type="checkbox"/> Action required <input type="checkbox"/> Service manual revision <input type="checkbox"/> Retrofit information <input checked="" type="checkbox"/> Tier 2

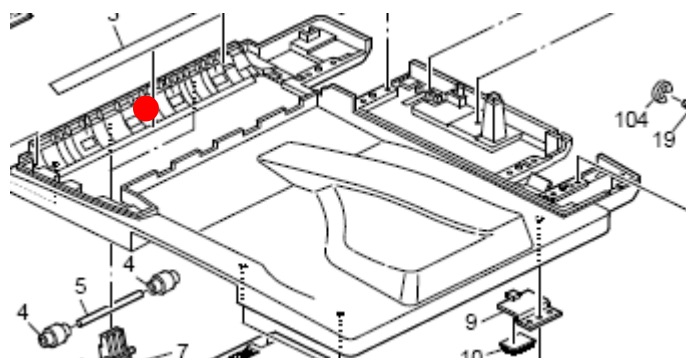
## SYMPTOM

A small bend or tear may form on the leading edge of the original when using the ARDF.



## CAUSE

One of the holes in the ARDF base frame (see the photograph in Step 4 below) has a small burr, and the leading edge of the original may catch on this burr.

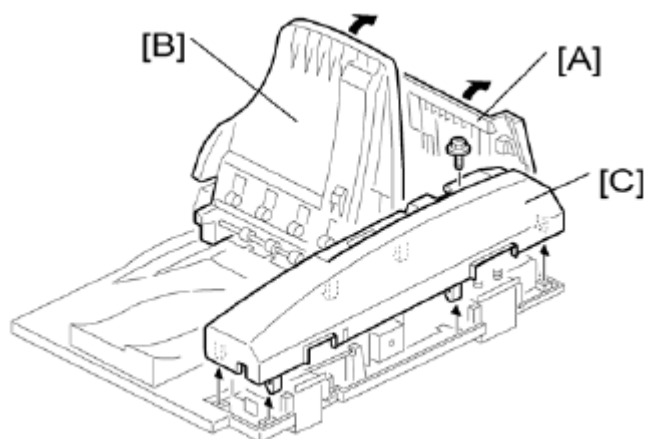


## SOLUTION

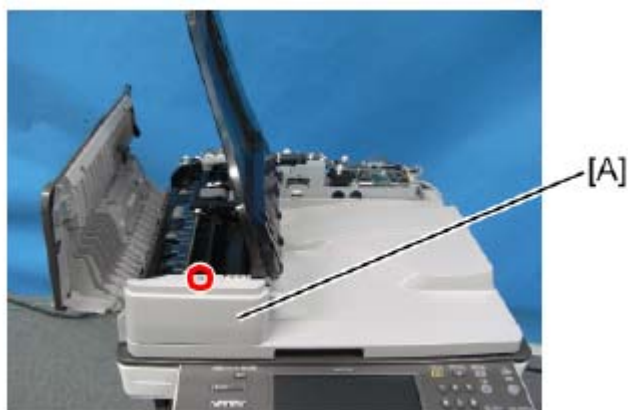
Remove the burr.

### Procedure:

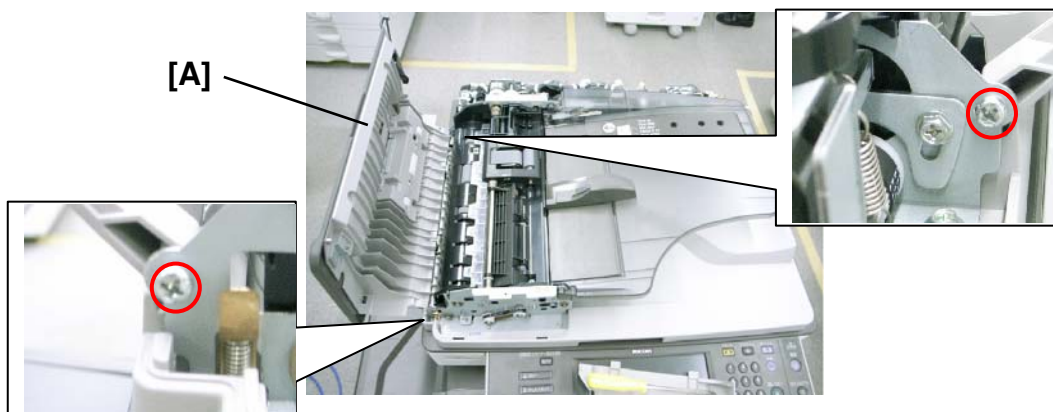
1. Open the left cover [A] and the original tray [B], and then remove the rear cover [C] (screw x1, hook x6).



2. Remove the front cover [A] (screw x1).



3. Remove the left cover [A] (screw x2).

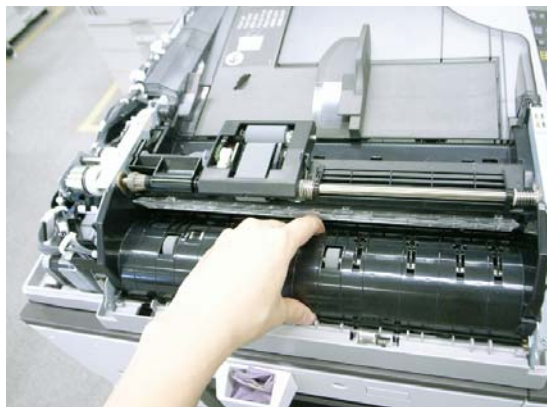


Model: ARDF (DF3060)

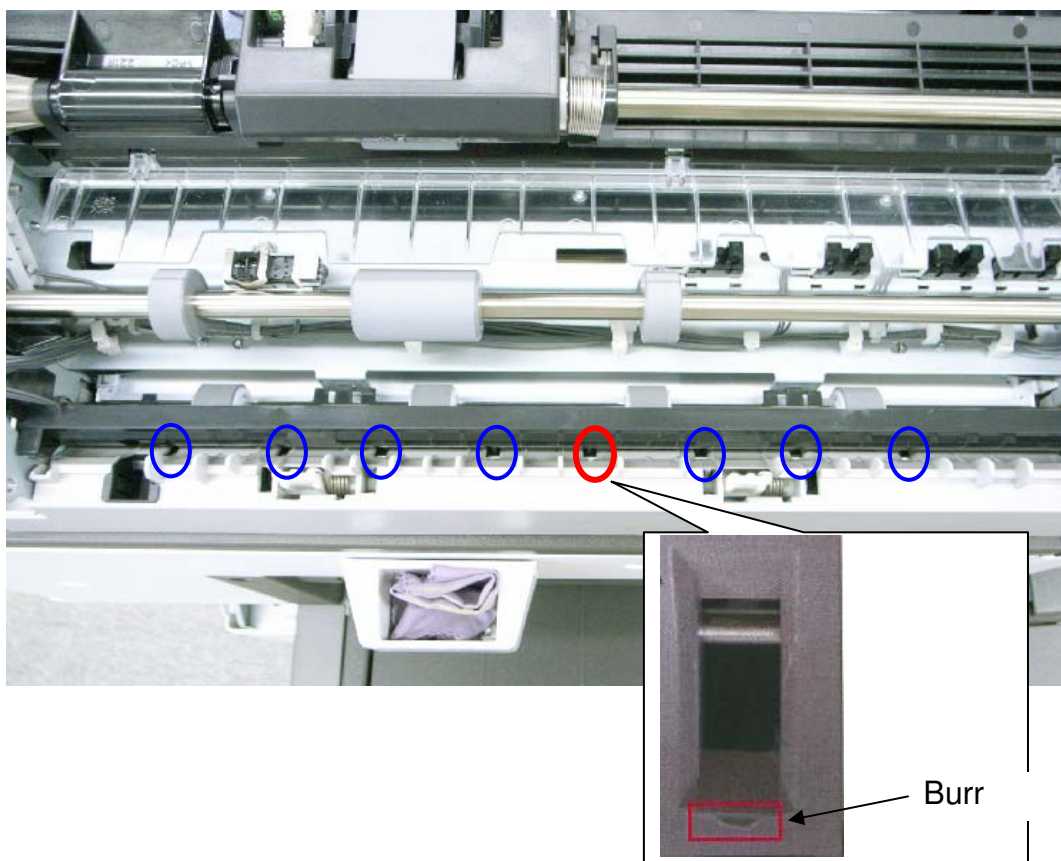
Date: 29-Mar-12

No.: RD578003

4. Remove the original turn guide plate (hook x1).



**Note:** After you remove the guide plate, you will see the eight holes circled in the photograph below (looking from the left side of the machine). The hole with the burr is the 4<sup>th</sup> from the right, circled in red below.

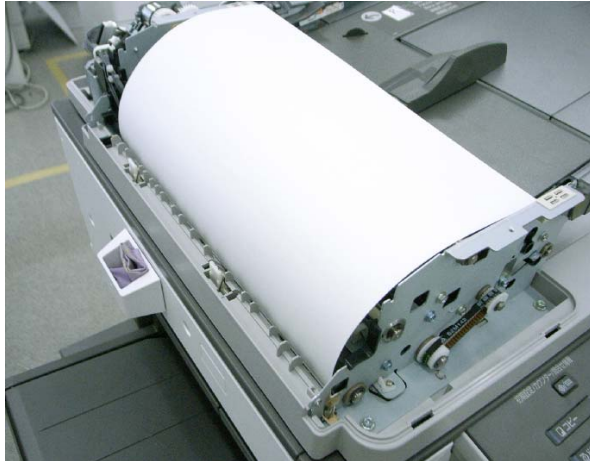


Model: ARDF (DF3060)

Date: 29-Mar-12

No.: RD578003

5. Insert a sheet of paper between the ARDF base frame and the entrance guide plate, as shown in the photograph below.



6. Remove the burr.
7. Reattach all the parts that you removed in the steps above.
8. Open the ARDF and clean the ARDF exposure glass.

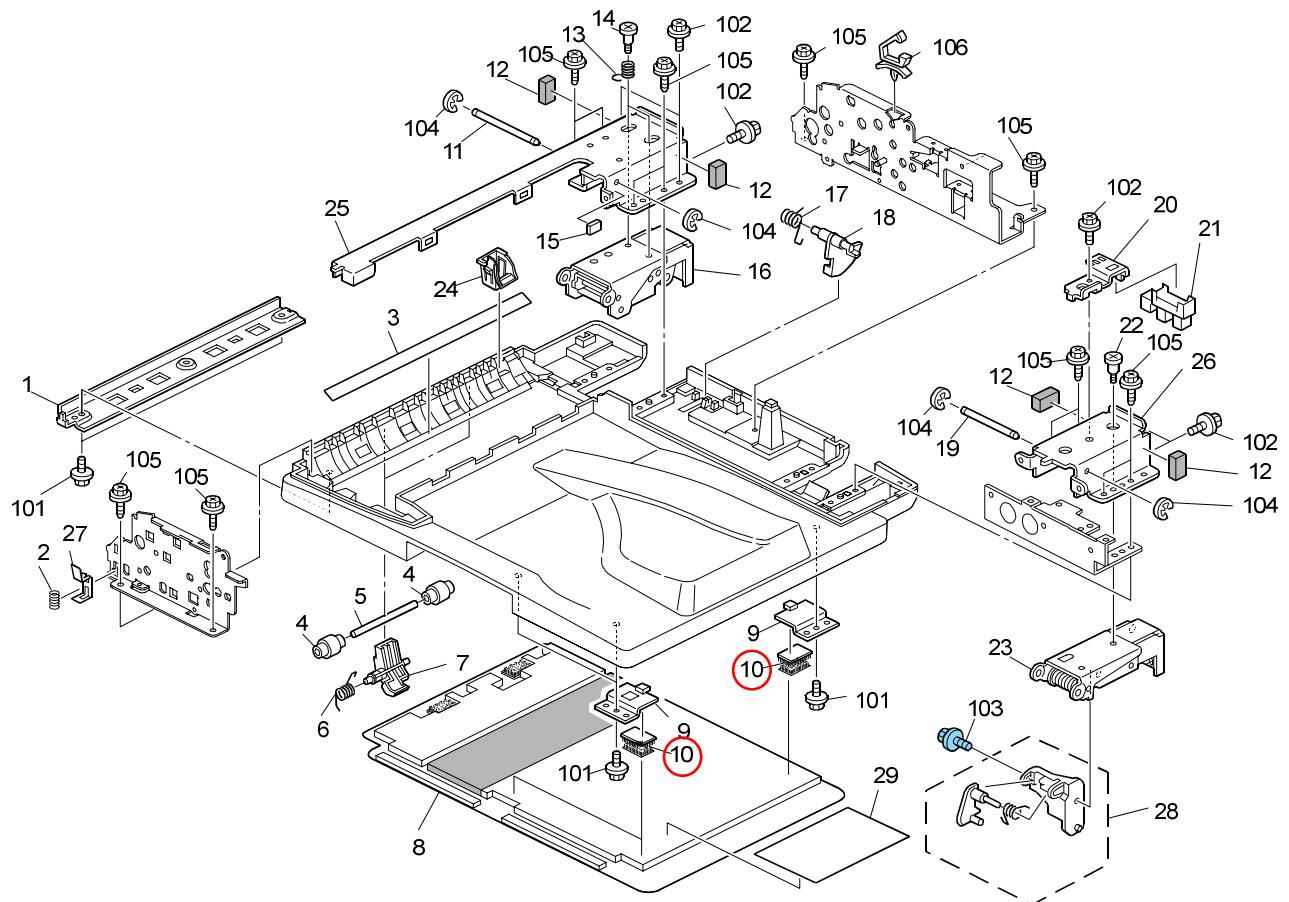
**Note:** This is because some of the shavings from the burr may have dropped onto the exposure glass when you removed the burr in Step 6.

Model: ARDF (DF3060)		Date: 21-Dec-12	No.: RD578004
Subject: Parts Catalog Correction for Tape for Platen Sheet		Prepared by: T. Nihei	
From: 2nd Tech Service Sect., MFP/P Tech Service Dept.			
Classification:	<input type="checkbox"/> Troubleshooting	<input checked="" type="checkbox"/> Part information	<input type="checkbox"/> Action required
	<input type="checkbox"/> Mechanical	<input type="checkbox"/> Electrical	<input type="checkbox"/> Service manual revision
	<input type="checkbox"/> Paper path	<input type="checkbox"/> Transmit/receive	<input type="checkbox"/> Retrofit information
	<input type="checkbox"/> Product Safety	<input type="checkbox"/> Other (        )	<input type="checkbox"/> Tier 2

Part number	Description	Q'ty	Int	Page	Index	Note
B3514322	TAPE - PLATEN SHEET	3	-	15	10	

**Change/Reason:** The illustration was corrected.

- The Velcro (TAPE – PLATEN SHEET) is not included in the Pressure Plate Assembly service part (Index 8).





Model: ARDF(DF3060)		Date: 9-Mar-15	No.: RD578005
Subject: Parts information(ADF GRIP)		Prepared by: A.Ishida	
From: 2nd Tech Service Sect., MFP/P Tech Service Dept.			
Classification:	<input type="checkbox"/> Troubleshooting <input type="checkbox"/> Mechanical <input type="checkbox"/> Paper path <input type="checkbox"/> Product Safety	<input checked="" type="checkbox"/> Part information <input type="checkbox"/> Electrical <input type="checkbox"/> Transmit/receive <input type="checkbox"/> Other (     )	<input type="checkbox"/> Action required <input type="checkbox"/> Service manual revision <input type="checkbox"/> Retrofit information <input type="checkbox"/> Tier 2

**Change:** The following assembly was added.

**Reason:** To increase the adhesive strength between the handgrip and DF base.

**Note:** The handgrip can be damaged when the DF is opened/closed repeatedly.

Model	Old part number	New part number	Description	Q'ty	Int	Page	Index	Note
LHOTSE-D	-	D5781991	GRIP:PROTECT:ASS'Y	0-1	-	3	27	

**Important:** Attach the grip to the base using double-sided tape.

