

ARDF DF2030
Machine Code: D724
Field Service Manual

December, 2012
Subject to change

TABLE OF CONTENTS

1. ARDF DF2030 (D724)

Covers and Tray.....	3
Rear Cover.....	3
Front Cover and Original Tray.....	3
Document Feed Components.....	5
Original Feed Unit.....	5
Pick-Up Roller.....	5
Feed Belt.....	6
Separation Roller.....	7
Electrical Components.....	9
ARDF Drive Board and DF Position Sensor.....	9
Original Length Sensors and Original Sensor.....	10
Original Set Sensor.....	11
Original Size Sensors and Skew Correction Sensor.....	12
Stamp Solenoid and Original Exit Sensor.....	12
Registration Sensor.....	13
Original Feed Drive.....	15
Feed Motor.....	15
Pick-up Solenoid.....	15
Inverter Solenoid.....	16
Feed Clutch.....	17
Transport Motor.....	18



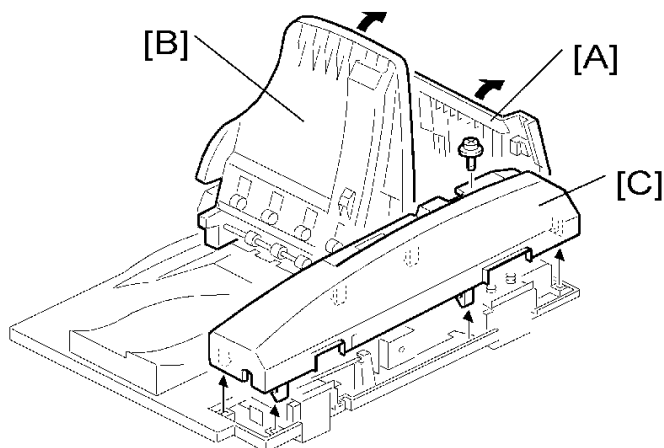
1. ARDF DF2030 (D724)

Covers and Tray

1

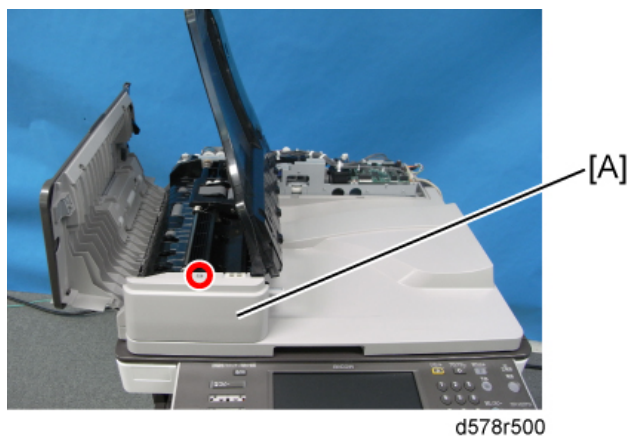
Rear Cover

1. Open the left cover [A].
2. Open the original tray [B].
3. Rear cover [C] (⚙ x 1, hook x 6)



Front Cover and Original Tray

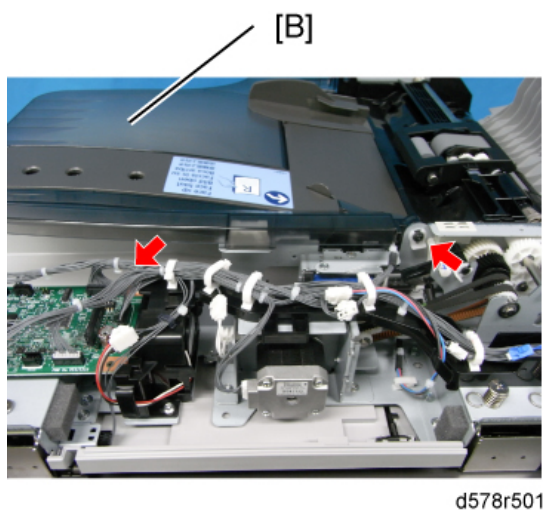
1. Open the left cover.
2. Rear cover (⚙ p.3 "Rear Cover")
3. Front cover [A] (⚙ x 1)



Note

- Keep the original tray open when you remove the front cover.

4. Original tray [B] (🔌 x 1, 📁 x 1)



Document Feed Components

Original Feed Unit

1

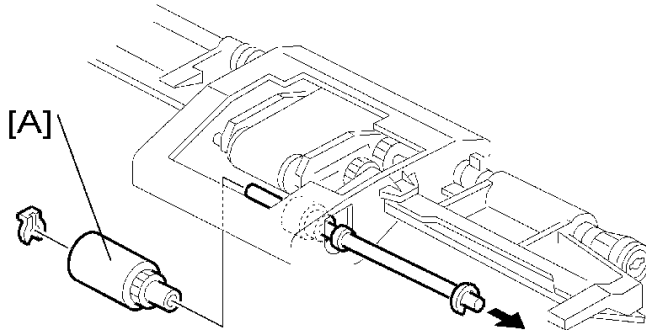
1. Open the left cover.
2. Original feed unit [A].



d578r502

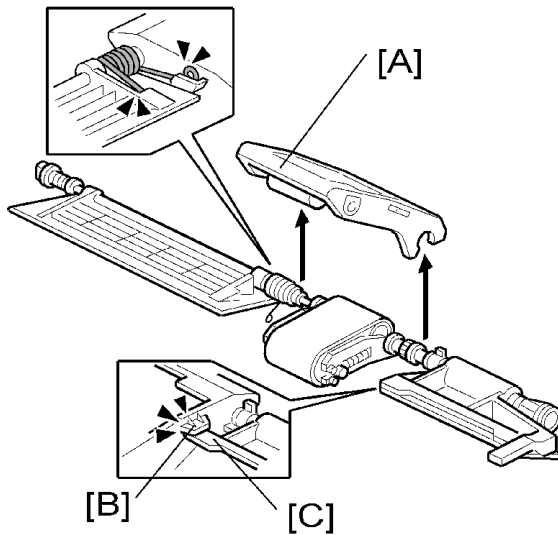
Pick-Up Roller

1. Open the left cover.
2. Original feed unit (p.5 "Original Feed Unit")
3. Pick-up roller [A] (x 1)



Feed Belt

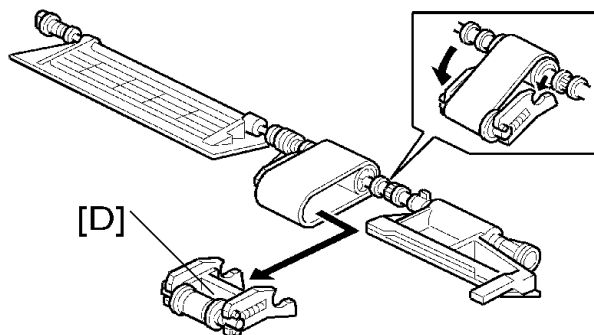
1. Open the left cover.
2. Original feed unit (p.5 "Original Feed Unit")
3. Feed belt cover [A] (spring x 1)



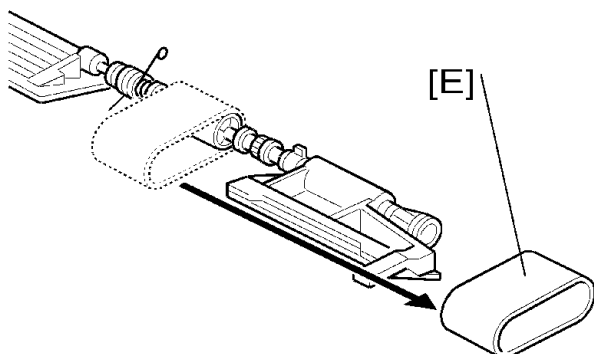
Note

- When reassembling the feed belt cover, make sure that the projection [B] of the feed belt cover is on the guide plate rear [C].

4. Belt tension unit [D]



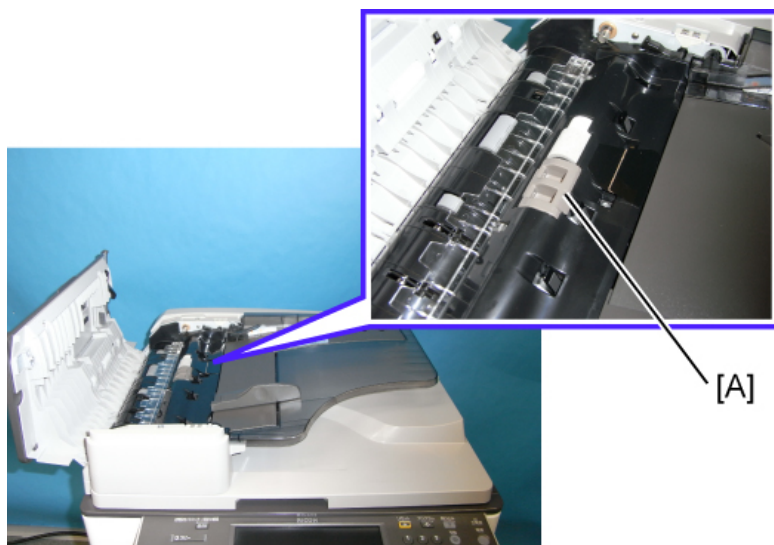
5. Feed belt [E].



Separation Roller

1. Original Feed Unit (Illustration p.5 "Original Feed Unit").
2. Separation roller cover [A].

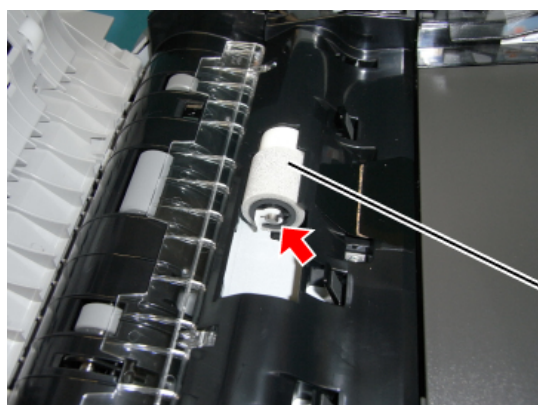
1



[A]

d578r503

3. Separation roller [B] (🌀 x 1)



[B]

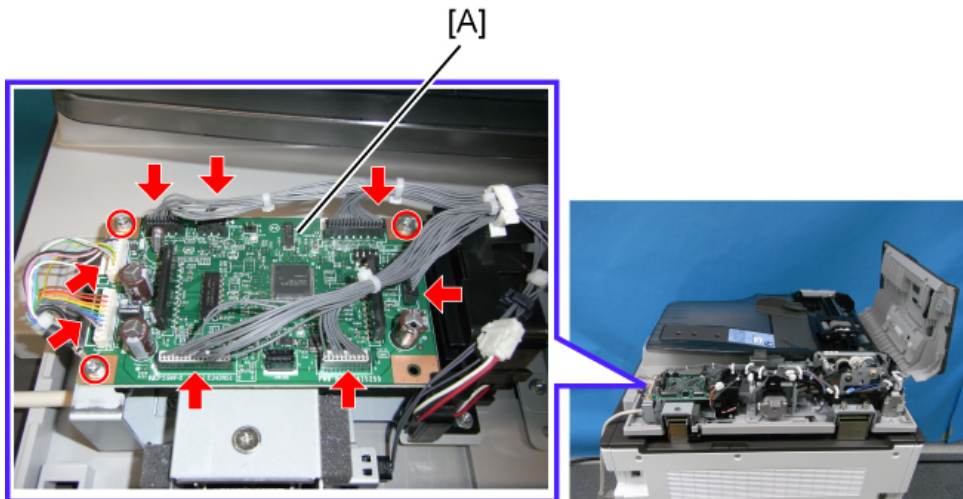
d578r504

Electrical Components

ARDF Drive Board and DF Position Sensor

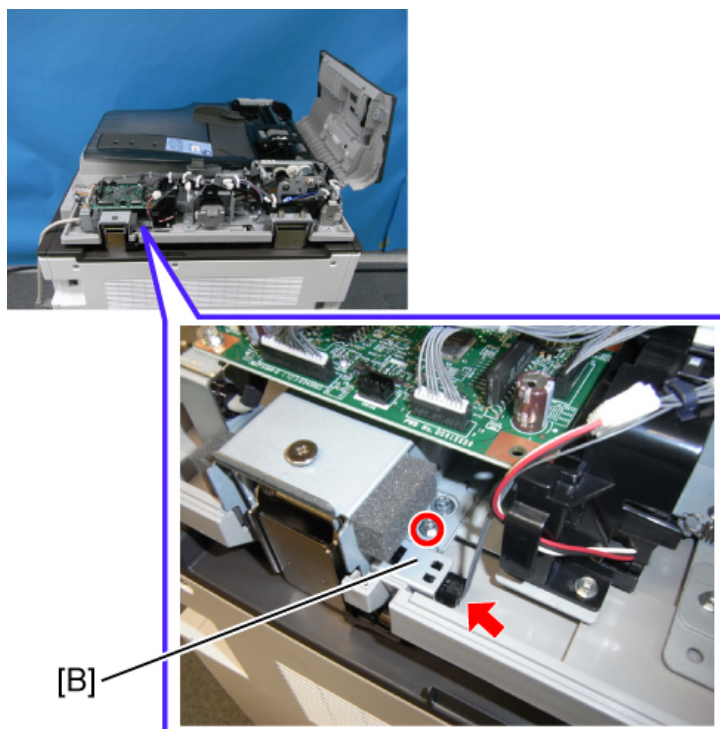
1

1. Rear cover (p.3 "Rear Cover")
2. ARDF drive board [A] (x 3, all s)



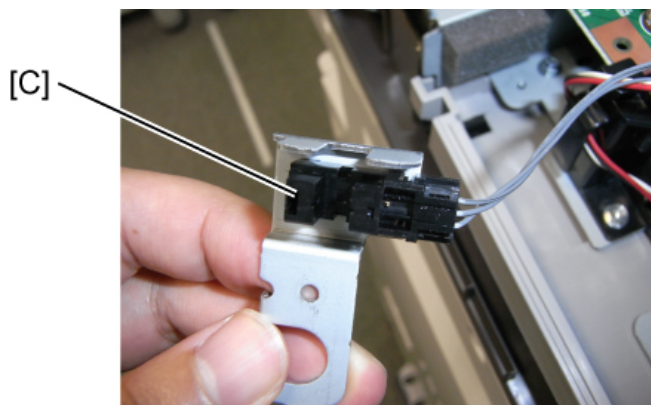
d578r505

3. DF position sensor with bracket [B] (x 1, x 1)



d578r506

4. DF position sensor [C] (hook x 2)

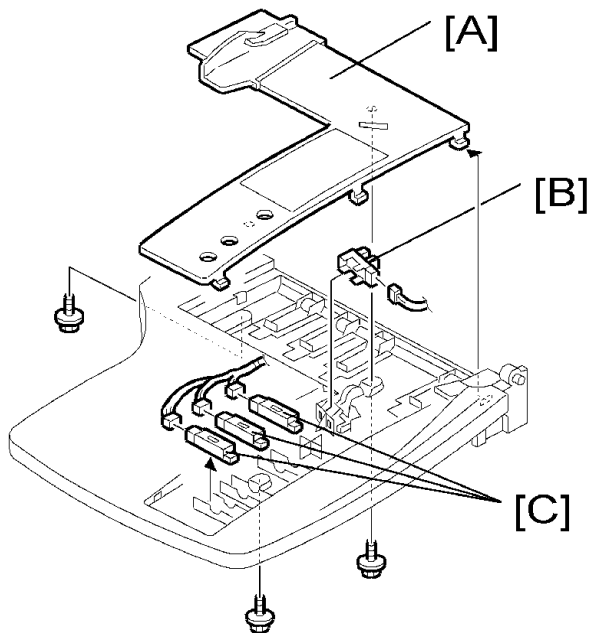


d578r507

Original Length Sensors and Original Sensor





1. Original Tray (p.3 "Front Cover and Original Tray")
2. Tray cover [A] (x 3)
3. Original sensor [B] (x 1)

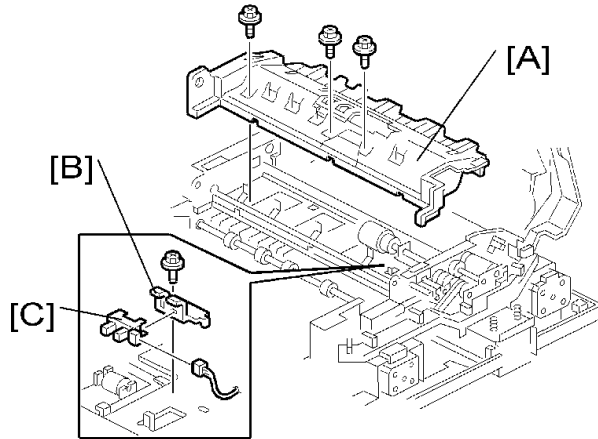
4. Original length sensors [C] ( x 1 each)



1

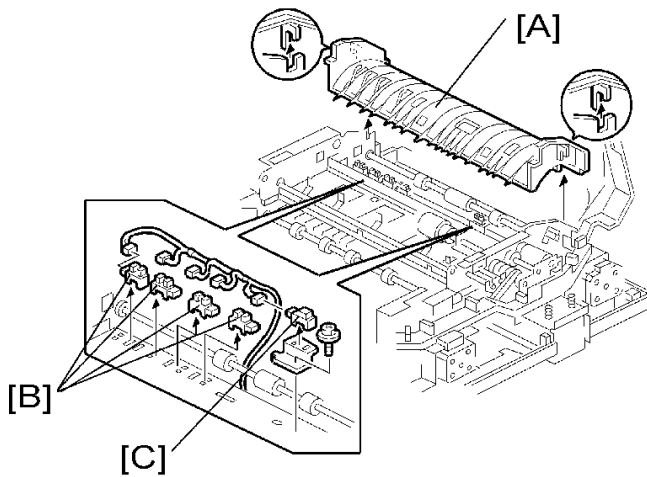
Original Set Sensor

1. Open the left cover.
2. Original feed unit ( p.5 "Original Feed Unit")
3. Original tray ( p.3 "Front Cover and Original Tray")
4. Original feed-in guide plate [A] ( x 3).
5. Original set sensor bracket [B] ( x 1)
6. Original set sensor [C]



Original Size Sensors and Skew Correction Sensor

1. Original feed-in guide plate (p.5 "Original Feed Unit")
2. Original turn guide plate [A] (hook x 1).
3. Original width sensors [B] (x 1 each) and skew correction sensor [C] with bracket (x 1, x 1)



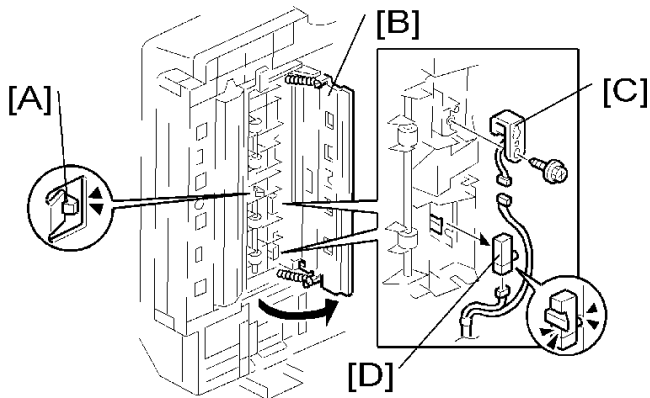
Stamp Solenoid and Original Exit Sensor

1. Open the ARDF.
2. Remove the left edge of the platen sheet.
3. Remove the screw (x 1).



d7242001

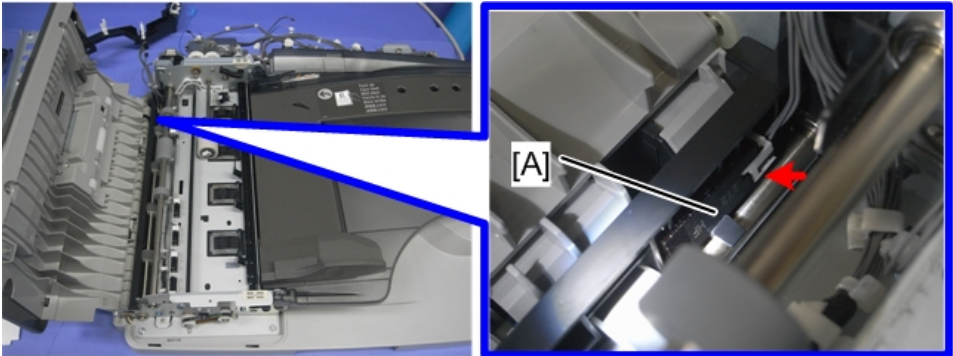
4. Release the hook [A].
5. Open the original exit guide plate [B]
6. Stamp solenoid [C] (🔧 x 1, 🛠️ x 1)
7. Original exit sensor [D] (🛠️ x 1, hook x 1)



Registration Sensor

1. Open the left cover.
2. Original feed unit (🔧 p.5 "Original Feed Unit")
3. Original tray (🔧 p.3 "Front Cover and Original Tray")
4. Original feed-in guide plate (🔧 p.11 "Original Set Sensor")
5. Registration sensor [A] (🛠️ x 1)

1



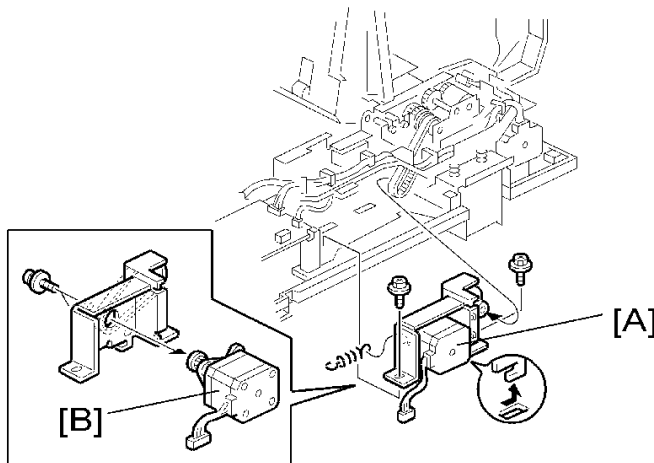
d7242002

Original Feed Drive

Feed Motor

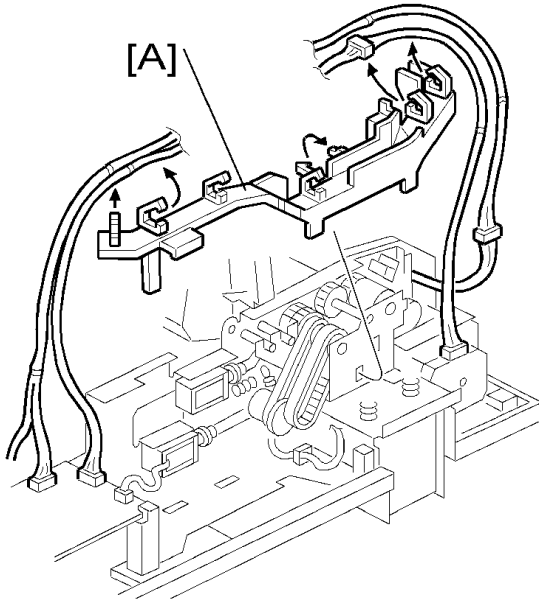
1

1. Rear cover (p.3 "Rear Cover")
2. Feed motor with bracket [A] (x 2, x 1, spring x 1)
3. Feed motor [B] (x 2)

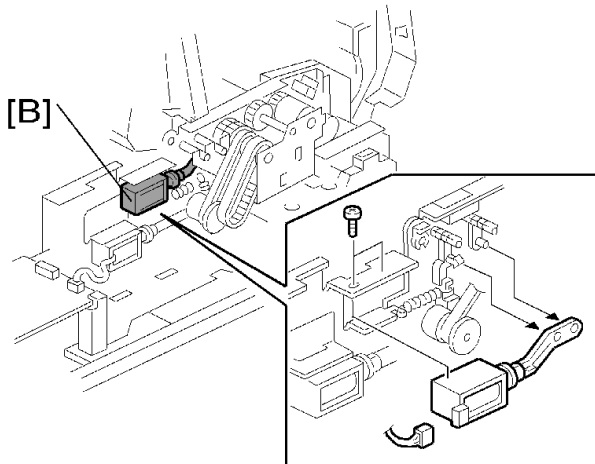


Pick-up Solenoid

1. Rear cover (p.3 "Rear Cover")
2. Harness guide [A] (all s)

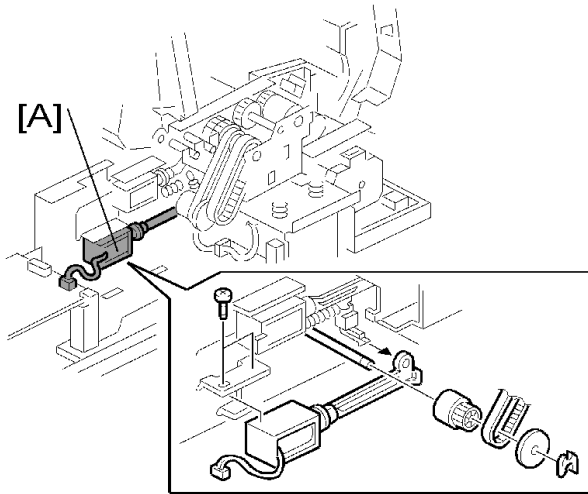


3. Pick-up solenoid [B] (🔧 x 2, 📦 x 1)



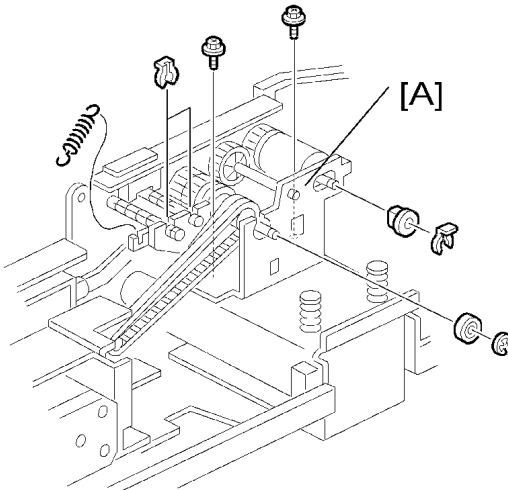
Inverter Solenoid

1. Rear cover (📦 p.3 "Rear Cover")
2. Harness guide (📦 p.15 "Pick-up Solenoid")
3. Inverter solenoid [A] (🔧 x 2, 📦 x 1, 🌀 x 1, gear x 1, gear cover x 1)

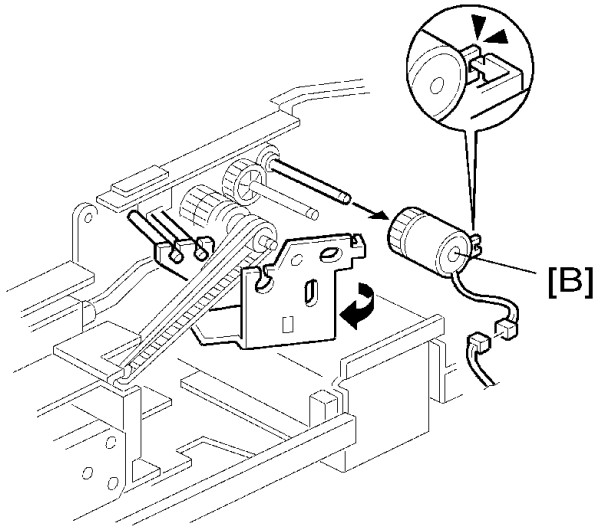


Feed Clutch

1. Rear cover (p.3 "Rear Cover")
2. Harness guide (p.15 "Pick-up Solenoid")
3. Bracket [A] (x 2, x 3, x 1, bushing x 1, spring x 1)

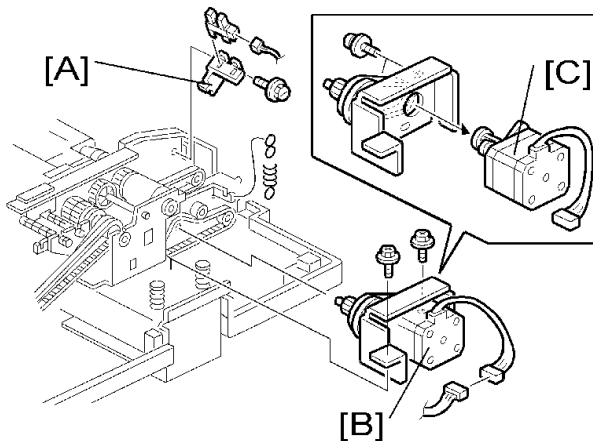


4. Slide the bracket.
5. Feed clutch [B] (x 1)



Transport Motor

1. Rear cover (p.3 "Rear Cover")
2. Harness guide (p.15 "Pick-up Solenoid")
3. Left cover sensor with bracket [A] (x 1, x 1)
4. Transport motor with bracket [B] (x 2, x 1, spring x 1)
5. Transport motor [C] (x 2)



MEMO

MEMO