

**ARDF DF1000**  
**Machine Code: B872**  
**SERVICE MANUAL**

January, 2009  
Subject to change



# TABLE OF CONTENTS

## 1. Replacement and Adjustment

Cover.....	3
Rear Cover.....	3
Document Feed Components.....	4
Original Feed Unit.....	4
Separation Roller.....	4
Electrical Components.....	6
DF Drive Board.....	6
Original Set and Inverter Sensor.....	6
Registration and Exit Sensor.....	7
Original Feed Drive.....	10
DF Feed Motor.....	10
DF Transport Motor.....	10
DF Feed Clutch.....	11
INDEX.....	13

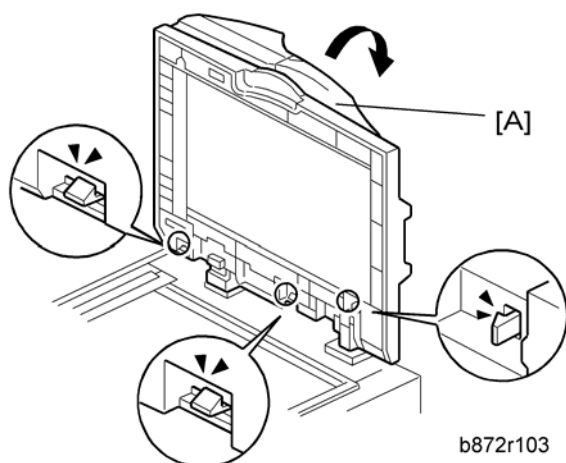


# 1. Replacement and Adjustment

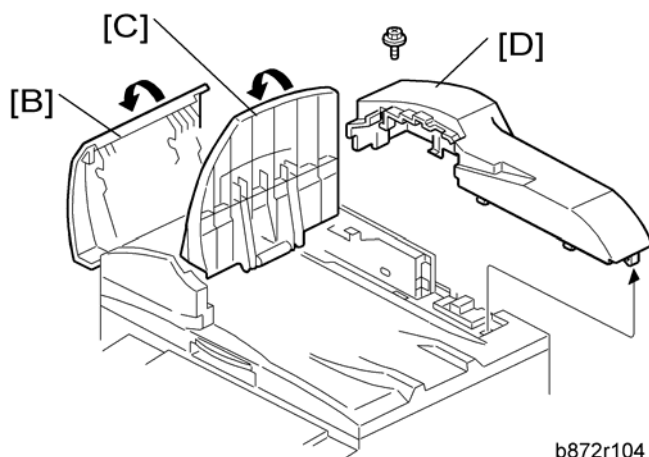
## Cover

1

### Rear Cover



1. Open the ARDF [A].
2. Release the three hooks



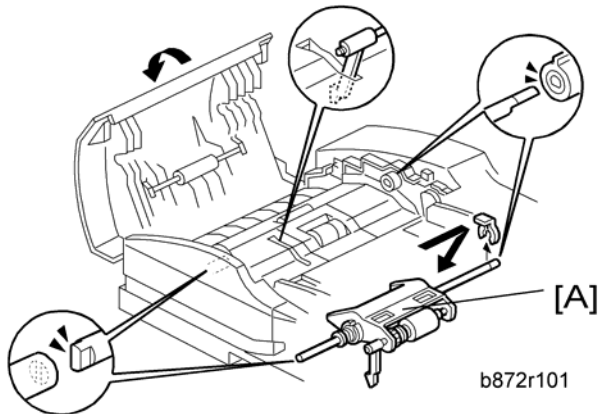
3. Open the left cover [B].
4. Open the original tray [C].
5. Rear cover [D] (⚙ x 1, hook x 4)

## Document Feed Components

### 1

#### Original Feed Unit

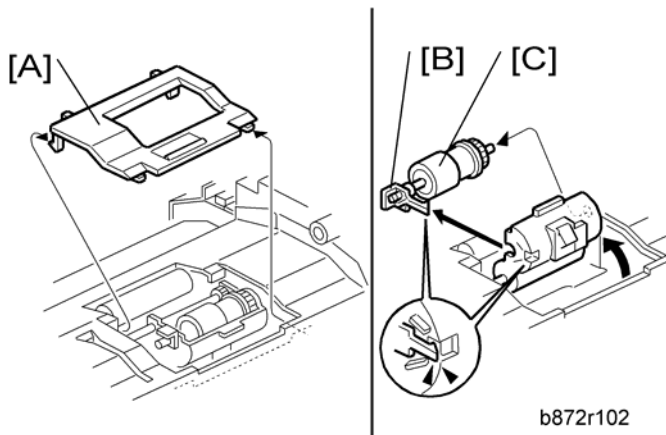
1. Open the left cover.



2. Original feed unit [A] (🔗 x 1)

#### Separation Roller

1. Open the left cover.
2. Original feed unit (🔗 "Original Feed Unit")



3. Separation roller cover [A] (hook x 2)
4. Separation roller stopper [B] (hook)

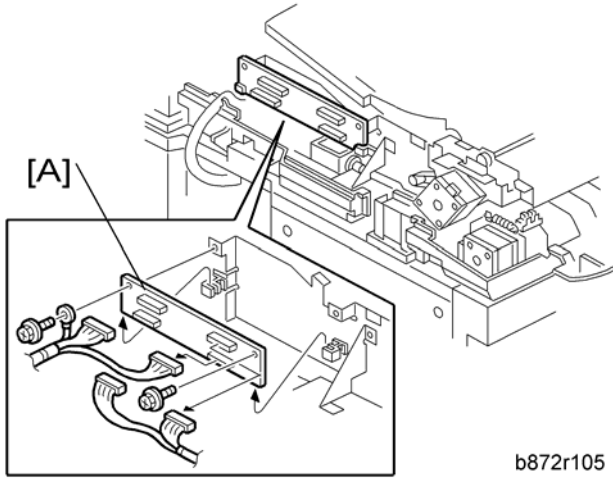
5. Separation roller [C]

# Electrical Components

## 1

### DF Drive Board

1. Rear cover (see "Rear Cover")



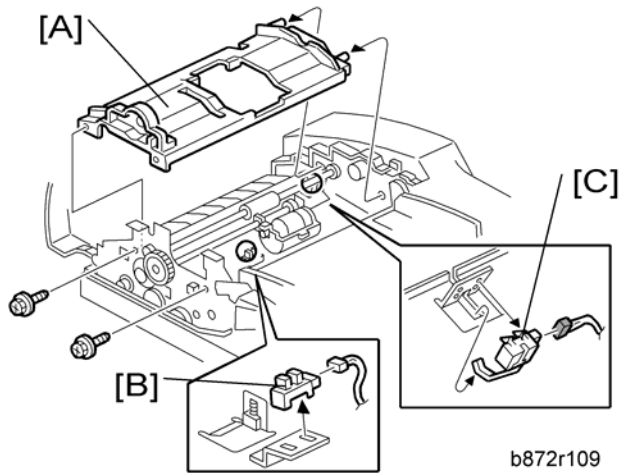
b872r105

2. DF drive board [A] (🔩 x 2, 📡 x 4, ground cable x 1)

### Original Set and Inverter Sensor

1. Open the left cover.
2. Original feed unit (see "Original Feed Unit")
3. DF feed clutch (see "DF Feed Clutch")

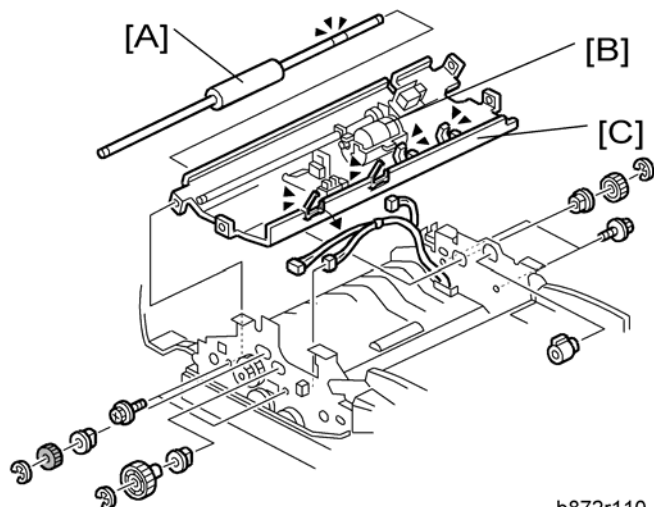




4. Original feed-in guide plate [A] (x 2).
5. Original set sensor [B] (x 1, hook)
6. Inverter sensor [C] (x 1, hook)

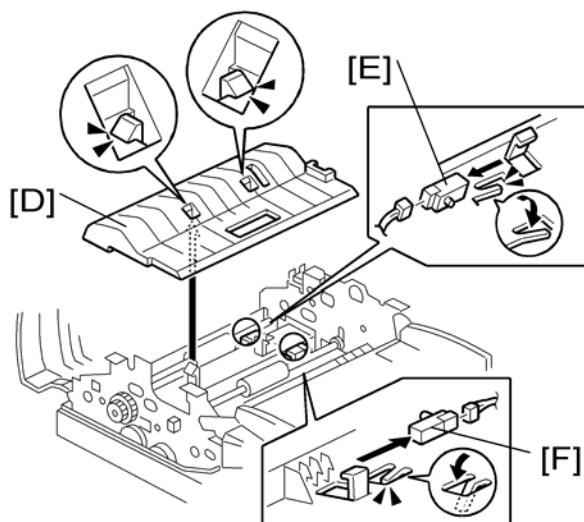
## Registration and Exit Sensor

1. Open the left cover.
2. Original feed unit (see "Original Feed Unit")
3. DF feed clutch (see "DF Feed Clutch")
4. Original feed-in guide plate (see "Original Set and Inverter Sensor")
5. DF feed motor (see "DF Feed Motor")
6. DF transport motor (see "DF Transport Motor")



b872r110

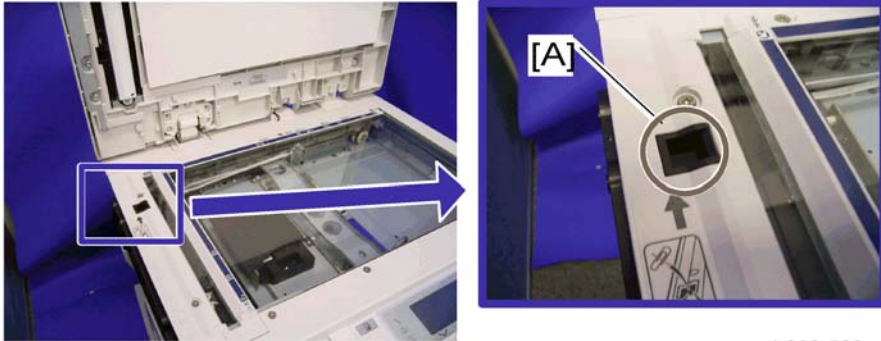
7. Transport roller [A] (Ⓢ x 2, gear x 2, bushing x 2)
8. Separation roller unit [B] (Ⓢ x 2, gear x 1, bushing x 2)
9. Inverter upper guide plate [C] (Ⓢ x 4, Ⓢ x 3, Ⓢ x 4)



b872r111

10. Inverter lower guide plate [D] (hook x 2)
11. Registration sensor [E] (Ⓢ x 1, hook)
12. Exit sensor [F] (Ⓢ x 1, hook)

## Registration Sensor Reflector



b262r508

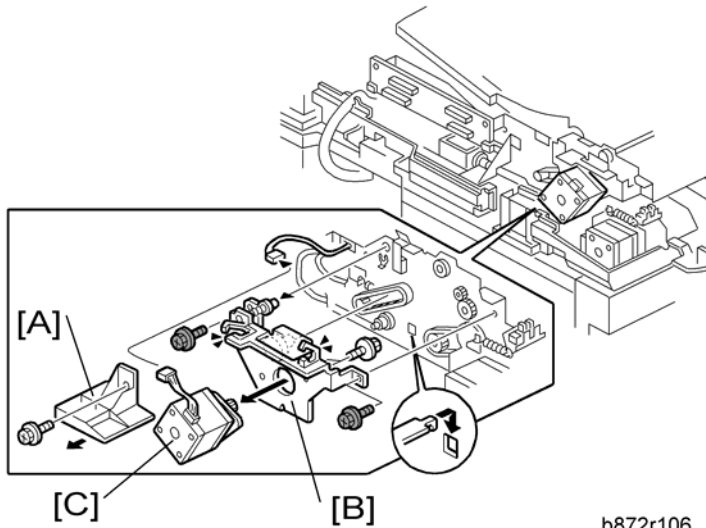
Clean the registration sensor reflector [A] if necessary.

# Original Feed Drive

## 1

### DF Feed Motor

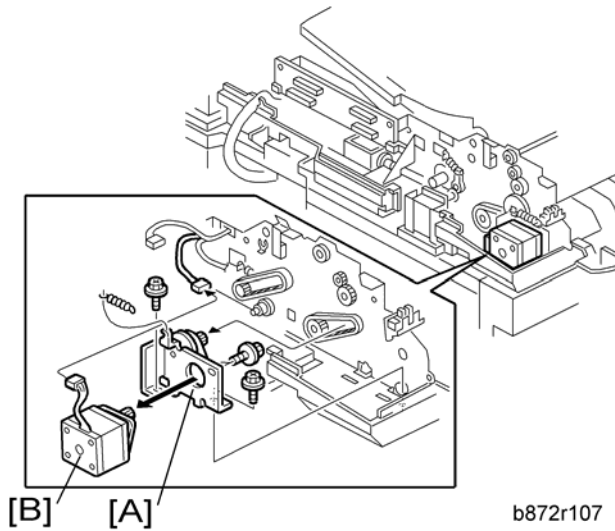
1. Rear cover (see "Rear Cover")



2. Inner cover [A] (🔩 x 1)
3. DF feed motor with bracket [B] (🔩 x 2, 📏 x 4, 📏 x 3, timing belt)
4. DF feed motor [C] (🔩 x 2)

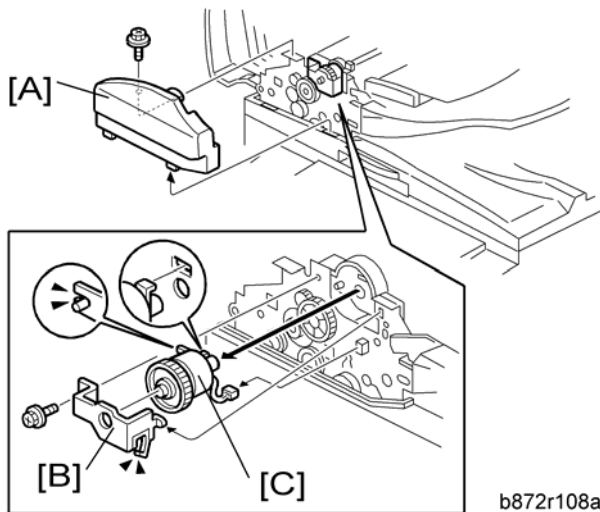
### DF Transport Motor

1. Rear cover (see "Rear Cover")
2. DF feed motor (see "DF Feed Motor")



3. DF transport motor with bracket [A] (⚙️ x 2, spring x 1, timing belt)
4. DF transport motor [B] (⚙️ x 2)

## DF Feed Clutch



1. Open the left cover.
2. Front cover [A] (⚙️ x 1)
3. Bracket [B] (⚙️ x 1, ⚙️ x 1)
4. DF feed clutch [C] (⚙️ x 1)

