

Model: S-C3		Date: 16-Mar-07	No.: MB872001
Modified Article: ADF parts change for paper slipping noise		Prepared by: Y. Yoshida	
From: 1st Tech. Support Sec. Service Support Dept.			
Reason for Modification:	<input type="checkbox"/> Parts catalog correction <input type="checkbox"/> Vendor change <input type="checkbox"/> Other <input type="checkbox"/> To facilitate assembly <input checked="" type="checkbox"/> To improve reliability <input type="checkbox"/> To meet standards (RoHs compliant) <input type="checkbox"/> Part standardization <input type="checkbox"/> Product Safety		

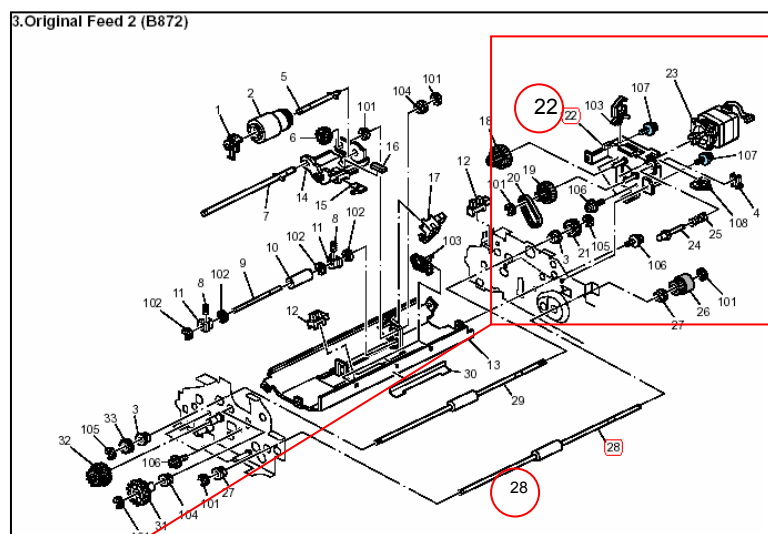
Old part number	New part number	Description	Q'ty	Int	Page	Index	Note
B8724111	B8724141	Bracket: Motor: PaperFeed: Ass'y	1	X/O	7	22	
B8723231	B8723261	Roller: reverse: Drive	1	X/O	7	28	
	B7894257	Flange : pulley	0→1	-/-	7		

Change:

- 1) The shapes of the reverse drive roller and motor bracket were changed.
- 2) A flange pulley was added.

Reason: To improve the tension of the belt.

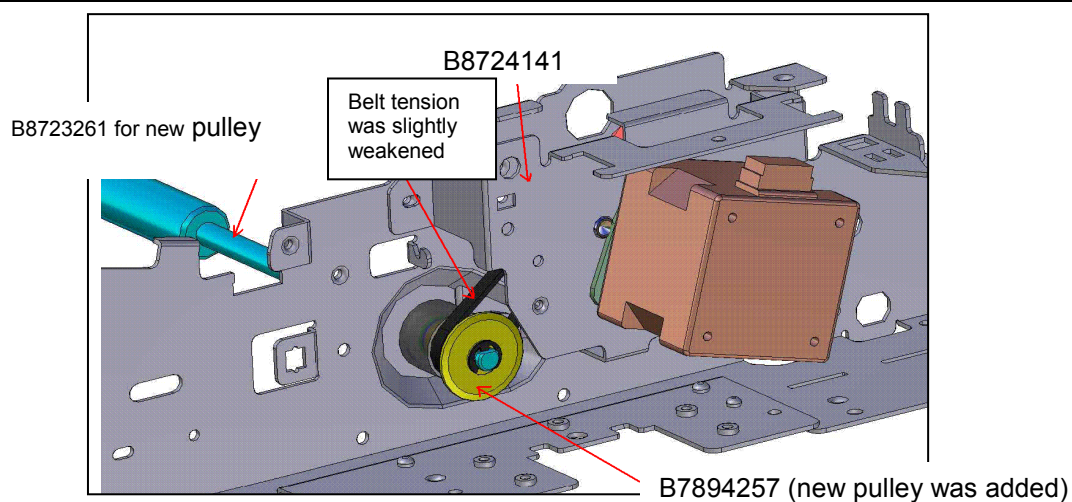
Note: This prevents the paper from slipping during switchback (and making a slipping noise). See RTB B872001.



Model: S-C3

Date: 16-Mar-07

No.: MB872001

**Cut-in Serial Number**

M0477400175

Model: ARDF for S-C3		Date: 27-Jun-07	No.: MB872002
Modified Article: Spring Plate : Reverse : Pressure		Prepared by: M. Ishihara	
From: 1st Tech. Support Sec. Service Support Dept.			
Reason for Modification:	<input type="checkbox"/> Parts catalog correction <input type="checkbox"/> Vendor change <input type="checkbox"/> Other <input type="checkbox"/> To facilitate assembly <input checked="" type="checkbox"/> To improve reliability <input type="checkbox"/> To meet standards <input type="checkbox"/> Part standardization <input type="checkbox"/> Product Safety ()		

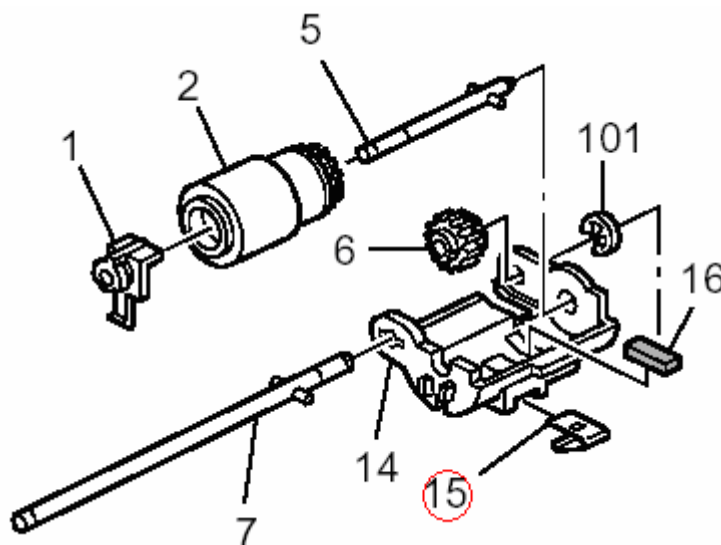
Old Part Number	New Part Number	Description	Q'ty	Int	Page	Index	Note
B8722212	B8722251	Spring Plate:Reverse:Pressure	1-1	X/O	7	15	ARDF P/C
					23	15	MainUnit P/C

Change: The thickness of the spring plate was reduced from 0.2 mm to 0.15 mm (which reduces the spring pressure).

Reason: To further ensure that multi-feeds do not occur.

Note:

- Difference between the old and new parts: The new part has two small holes.
- This MB will be reissued later to announce the cut-in serial numbers for this change.



Reissued: 03-Sep-07

Model: Stella-C3 ARDF (DF1000)	Date:27-Jun-07	No.: MB872002a
--------------------------------	----------------	----------------

MB Reissue

The items in ***bold italics*** were corrected or added.

Modified Article: Spring Plate : Reverse : Pressure		Prepared by: M. Ishihara	
From: 1st Tech. Support Sec. Service Support Dept.			
Reason for	<input type="checkbox"/> Parts catalog correction	<input type="checkbox"/> Vendor change	<input type="checkbox"/> Other
Modification:	<input type="checkbox"/> To facilitate assembly	<input checked="" type="checkbox"/> To improve reliability	<input type="checkbox"/> To meet standards
	<input type="checkbox"/> Part standardization	<input type="checkbox"/> Product Safety	()

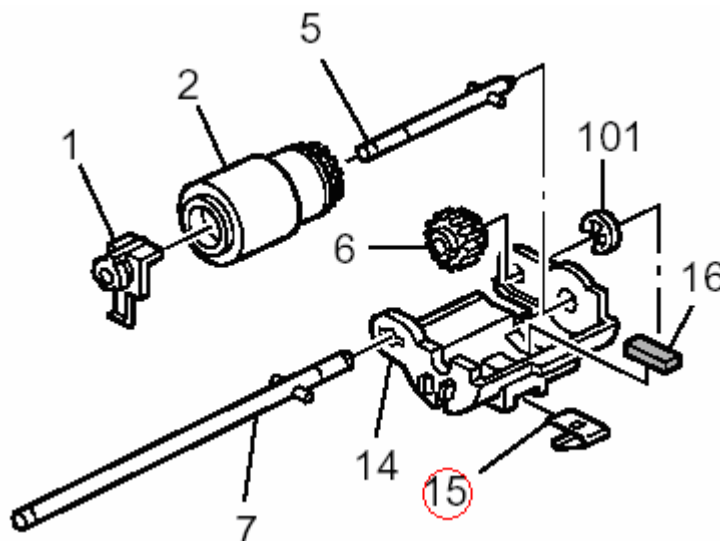
Old Part Number	New Part Number	Description	Q'ty	Int	Page	Index	Note
B8722212	B8722251	Spring Plate:Reverse:Pressure	1-1	X/O	7	15	ARDF P/C
					23	15	MainUnit P/C

Change: The thickness of the spring plate was reduced from 0.2mm to ***0.15mm*** (which reduces the spring pressure).

Reason: To further ensure that multi-feeds do not occur.

Note:

- Difference between the old and new parts: The new part has two small holes.
- This MB will be reissued later to announce the cut-in serial numbers for this change.



Reissued: 03-Sep-07

Model: Stella-C3 ARDF (DF1000)	Date:27-Jun-07	No.: MB872002a
--------------------------------	----------------	----------------

Machine-Cut-in serial Numbers:

Machine	Code	Destination	Serial Number	Production Date
DF1000	B872-17	NA,M SA	M0478001307	2007/08/04
	B872-26	Infotec EU	8X38770001	2007/07/06
	B872-27	EU, M SA, Asia, Pacific	M0477900001	2007/07/04
S-C3bF	B284-17	NA,M SA	L9979200001	2007/07/30
	B284-26	Infotec EU	8W88870001	2007/08/20
	B284-29	Asia, Pacific	L9979200394	2007/08/20
	B284-67	EU, M SA	L9979200445	2007/08/08
S-C3bSPF	B288-17	NA, M SA	M0179200055	2007/07/26
	B288-26	Infotec EU	8W98870001	2007/08/10
	B288-29	Asia Pacific	M0179203549	2007/07/26
	B288-67	EU, M SA	M0179203768	2007/07/30
S-C3b with DF	B292-17	NA,M SA	B0279200001	2007/07/30

Reissued: 21-Sep-07

Model: Stella-C3 ARDF (DF1000)	Date: 12-Sep-07	No.: MB872003a
--------------------------------	-----------------	----------------

MB Reissue

The items in ***bold italics*** were corrected or added.

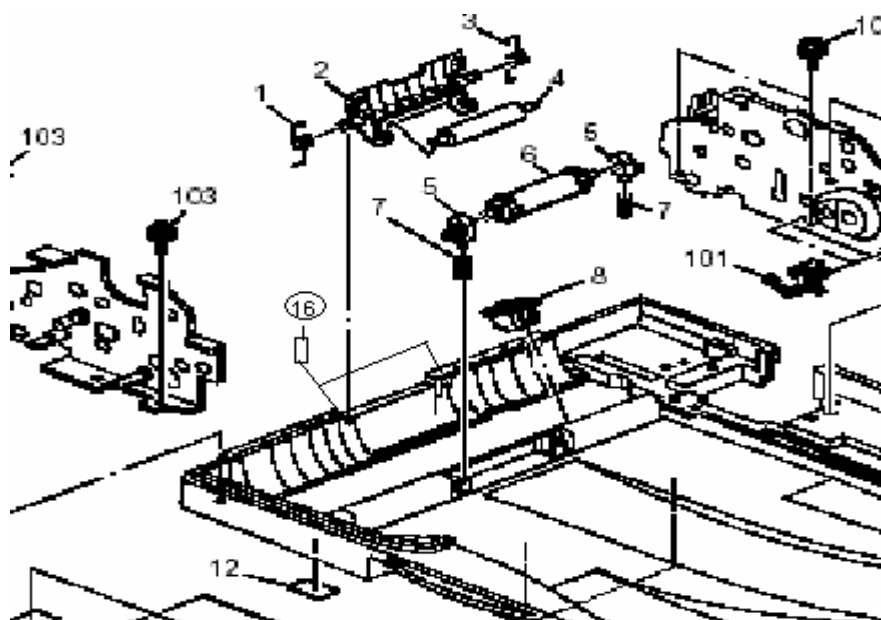
Modified Article: Guide: Base: Driven		Prepared by: M. Ishihara	
From: 1st Tech. Support Sec. Service Support Dept.			
Reason for	<input type="checkbox"/> Parts catalog correction	<input type="checkbox"/> Vendor change	<input type="checkbox"/> Other
Modification:	<input type="checkbox"/> To facilitate assembly	<input checked="" type="checkbox"/> To improve reliability	<input type="checkbox"/> To meet standards
	<input type="checkbox"/> Part standardization	<input type="checkbox"/> Product Safety	()

Old Part Number	New Part Number	Description	Q'ty	Int	Page	Index	Note
-	B8721941	Guide: Base: Driven	0-2	-	11	16	ARDF P/C
					27	16	MainUnit P/C

Change: Two Mylars (Guide: Base: Driven) were added to the ARDF base frame.

Reason: To ensure that originals curled at the leading edge do not jam.

Note: This MB will be reissued later to announce the cut-in serial numbers for this change.



Reissued: 21-Sep-07

Model: Stella-C3 ARDF (DF1000)

Date: 12-Sep-07

No.: MB872003a

Cut-in machine serial numbers

<i>Model</i>	<i>Code</i>	<i>Serial numbers</i>	<i>Production date</i>
<i>Optional ARDF</i>	<i>B872-17</i>	<i>M0478200001 -</i>	<i>2007/09/21</i>
	<i>B872-26</i>	<i>8X39070001 -</i>	<i>2007/10/09</i>
	<i>B872-27</i>	<i>M0478200001 -</i>	<i>2007/09/21</i>
S-C3 F	B284-17		
	B284-26		
	B284-29		
	B284-67		
S-C3 SPF	B288-17		
	B288-26		
	B288-29		
	B288-67		
S-C3 with ARDF	B292-17		

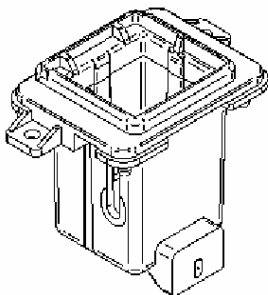
We will re-issue when we receive the cut-in serial number for blank columns.

Model: Stella-C3 ARDF (DF1000)		Date: 03-Dec-07	No.: MB872004
Modified Article: Holder: Hinge		Prepared by: M. Ishihara	
From: 1st Tech. Support Sec. Service Support Dept.			
Reason for Modification:	<input checked="" type="checkbox"/> Parts catalog correction <input type="checkbox"/> Vendor change <input type="checkbox"/> Other <input type="checkbox"/> To facilitate assembly <input type="checkbox"/> To improve reliability <input type="checkbox"/> To meet standards <input type="checkbox"/> Part standardization <input type="checkbox"/> Product Safety ()		

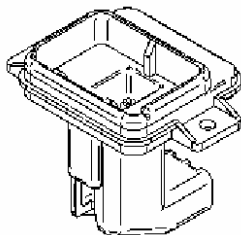
Change/Reason: The following parts were missing in the parts catalog.

Part number	Description	Q'ty	Int	Page	Old index	New Index	Note
B2621667	Holder: Hinge: Left	1		11		17	New
B2621668	Holder: Hinge: Right	1		11		18	New

B2621667 (Holder: Hinge: Left) New Index No.17



B2621668 (Holder: Hinge: Right) New Index No.18



Reissued: 07-Dec-07

Model: Stella-C3 ARDF (DF1000)	Date: 12-Sep-07	No.: MB872003b
--------------------------------	-----------------	----------------

MB Reissue

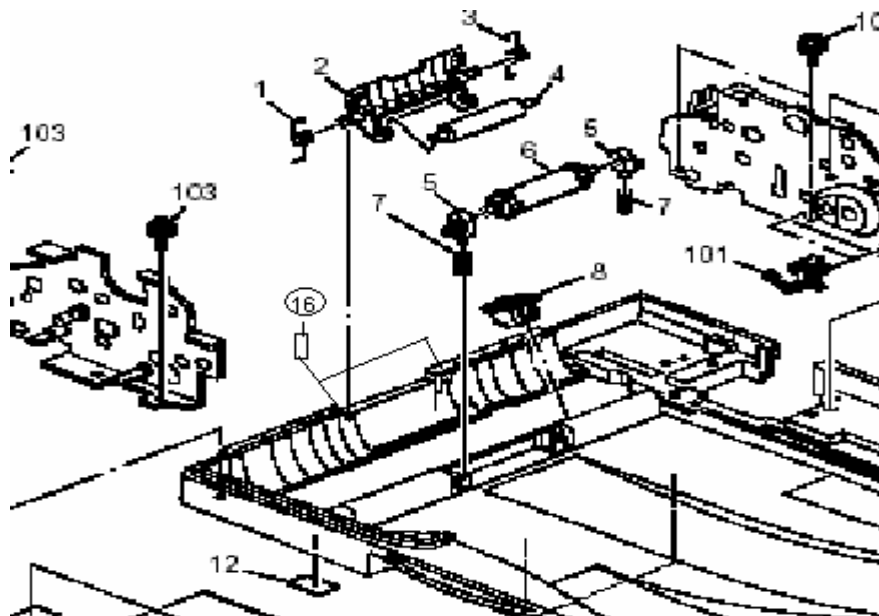
The items in ***bold italics*** were corrected or added.

Modified Article: Guide: Base: Driven		Prepared by: M. Ishihara	
From: 1st Tech. Support Sec. Service Support Dept.			
Reason for	<input type="checkbox"/> Parts catalog correction	<input type="checkbox"/> Vendor change	<input type="checkbox"/> Other
Modification:	<input type="checkbox"/> To facilitate assembly	<input checked="" type="checkbox"/> To improve reliability	<input type="checkbox"/> To meet standards
	<input type="checkbox"/> Part standardization	<input type="checkbox"/> Product Safety	()

Old Part Number	New Part Number	Description	Q'ty	Int	Page	Index	Note
-	B8721941	Guide: Base: Driven	0-2	-	11	16	ARDF P/C
					27	16	MainUnit P/C

Change: Two Mylars (Guide: Base: Driven) were added to the ARDF base frame.

Reason: To ensure that originals curled at the leading edge do not jam.



Reissued: 07-Dec-07

Model: Stella-C3 ARDF (DF1000)

Date: 12-Sep-07

No.: MB872003b

Cut-in machine serial numbers

Model	Code	Serial numbers	Production date
Optional ARDF	B872-17	M0478200 877 -	2007/ 10/09
	B872-26	8X39070001 -	2007/10/09
	B872-27	M0478200 572 -	2007/ 10/08
S-C3 F	B284-17	L9979400078 -	2007/10/22
	B284-26	8W89070001 -	2007/10/19
	B284-29	L9979501067 -	2007/11/19
	B284-67	L9979400239 -	2007/10/19
S-C3 SPF	B288-17	M0179500001 -	2007/11/05
	B288-26	8W99070001 -	2007/10/19
	B288-29	M0179502277 -	2007/11/14
	B288-67	M0179403969 -	2007/10/17
S-C3 with ARDF	B292-17	M0279400010 -	2007/10/22

Model: Stella-C3 ARDF (DF1000)		Date: 08-May-08	No.: MB872005
Modified Article: PM Parts Index		Prepared by: M. Ishihara	
From: 1st Tech. Support Sec. Service Support Dept.			
Reason for Modification:	<input checked="" type="checkbox"/> Parts catalog correction <input type="checkbox"/> Vendor change <input type="checkbox"/> Other <input type="checkbox"/> To facilitate assembly <input type="checkbox"/> To improve reliability <input type="checkbox"/> To meet standards <input type="checkbox"/> Part standardization <input type="checkbox"/> Product Safety ()		

PM Parts Index
<ARDF DF1000 (B872) PARTS CATALOG>

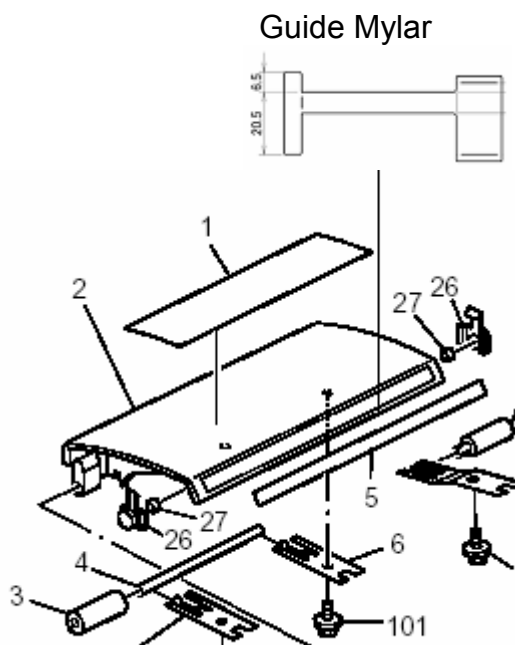
Section Name	Part No.	Description Service Manual	Description in Parts Catalog	Q'ty Per Asse mbly	Page and Index No.
Original Feed 1 (B872)	AF031062	Feed Roller	Feed Roller	1	5-18
	AF030363	Pickup Plate	Pickup Plate	1	5-26
Original Feed 2 (B872)	AF032030	Reverse Roller	Reverse Roller	1	7-2

Change/Reason: The above table was missing from the Parts Catalog.

Model: Stella-C3 ARDF (DF1000)		Date: 02-Jul-08	No.: MB872006
Modified Article: Guide Mylar		Prepared by: M. Ishihara	
From: 1st Tech. Support Sec. Service Support Dept.			
Reason for Modification:	<input checked="" type="checkbox"/> Parts catalog correction <input type="checkbox"/> Vendor change <input type="checkbox"/> Other <input type="checkbox"/> To facilitate assembly <input type="checkbox"/> To improve reliability <input type="checkbox"/> To meet standards <input type="checkbox"/> Part standardization <input type="checkbox"/> Product Safety ()		

Change/Reason: The following part was missing from the parts catalog.

Part number	Description	Q'ty	Int	Page	Old index	New Index	Note
B8724712	Guide Mylar	1		3		30	New(B872 P/C)
B8724712	Guide Mylar			19		30	New(B292 P/C)
B8724712	Guide Mylar			19		23	New(B284/B288 P/C)



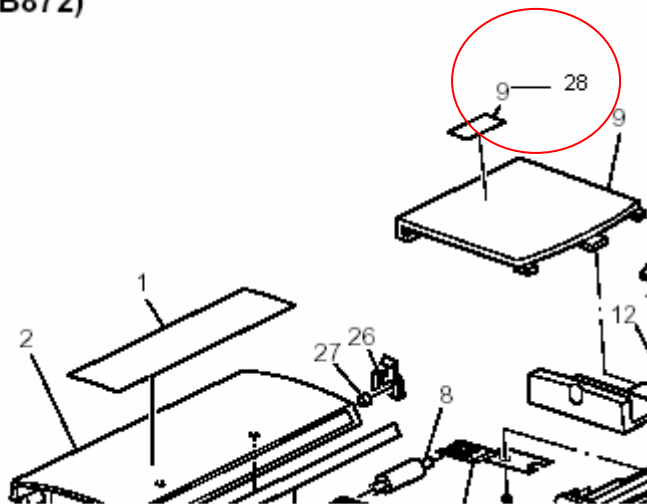
Model: Stella-C3 ARDF (DF1000)		Date: 28-Oct-08	No.: MB872007
Modified Article: Guide: Base: Pressure Plate Pad		Prepared by: M. Ishihara	
From: 1st Tech. Support Sec. Service Support Dept.			
Reason for Modification:	<input checked="" type="checkbox"/> Parts catalog correction <input type="checkbox"/> Vendor change <input type="checkbox"/> Other <input type="checkbox"/> To facilitate assembly <input type="checkbox"/> To improve reliability <input type="checkbox"/> To meet standards <input type="checkbox"/> Part standardization <input type="checkbox"/> Product Safety ()		

Incorrect Part Number	Correct Part Number	Description	Q'ty	Int	Page	Index	Note
B8592352	A8592352	Pressure Plate Pad	1-1	-	3	28	

Incorrect Index number: 9

Correct Index number: 28

1.Exterior (B872)





Part Change Information List

Date: October 29, 2010

Model	Code	PCIL Nr.	PCIL Correction	Old part number	New part number	Description	Old Q'ty	New Q'ty	Int	3DPC	Page	Index	Set	Set Int	RTB	Note	Ref. Nr.	ECN Nr.
S-C3 ARDF (DF1000)	B872	201010		H5211350	H3101360	PAD-PICKUP	1	1	O/O		5	2					V1002155	10070068



Part Change Information List

Date: April 26, 2013

Model	Code	PCIL Number	PCIL Correction	Old part number	New part number	Description	Old Q'ty	New Q'ty	Int	3DPC	Page	Index	Set	Set Int	RTB	Note	Ref Number	ECN Number
S-C3 ARDF (DF1000)	B872	201304		AA043605	AA043679	SYNCHRONOUS BELT:40S3M114	1	1	O/O		9	13					V1301206	13030929