

Mail Box Unit (G909)
Bridge Unit (G912)

PARTS CATALOG

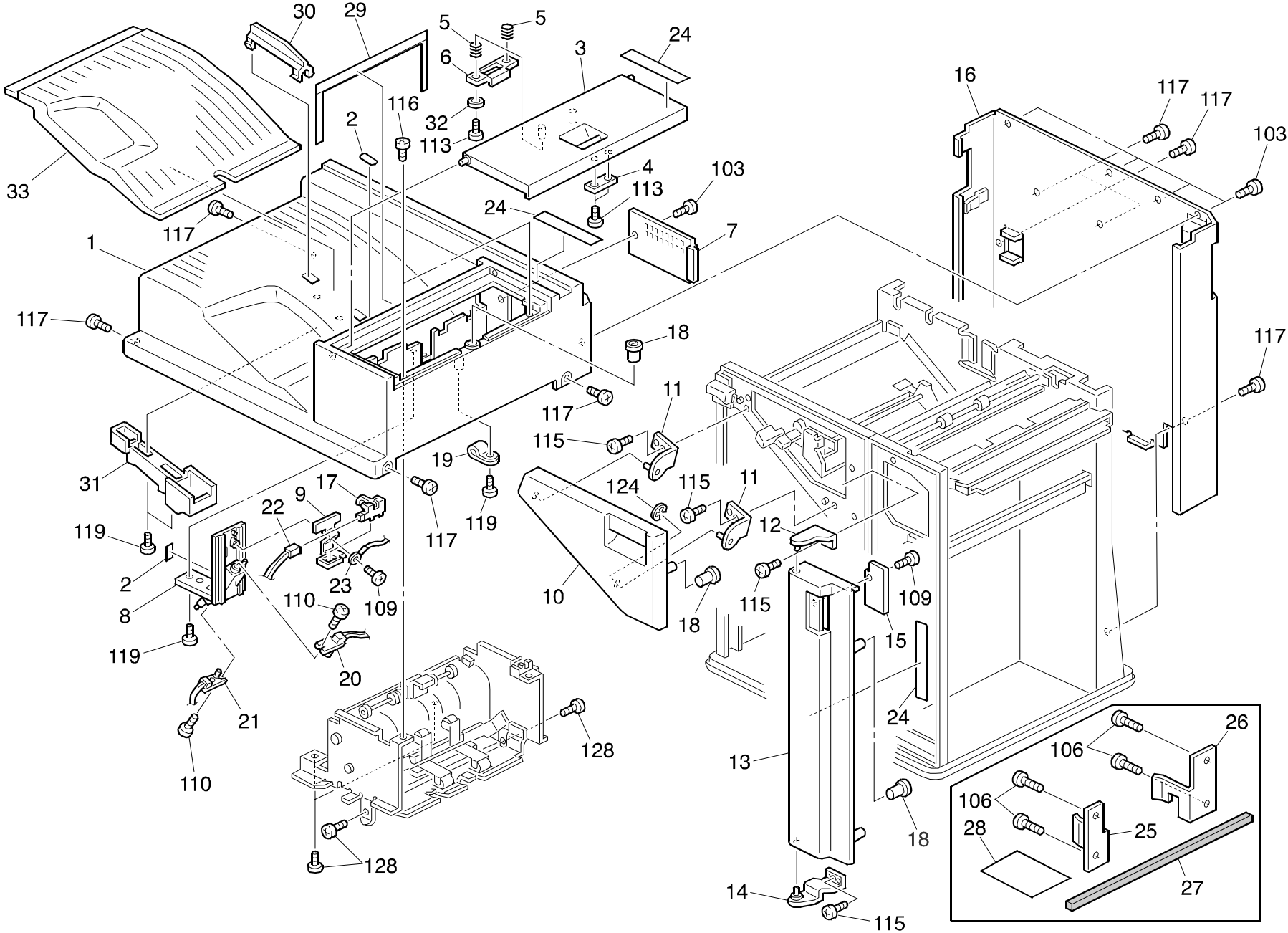
INTRODUCTION

This chapter instructs you the numbers and names of parts on this machine.

INDEX to PARTS CATALOG

1.MAIL BOX 1 (G909)	2
2.MAIL BOX 2 (G909)	4
3.MAIL BOX 3 (G909)	6
4.MAIL BOX 4 (G909)	8
5.MAIL BOX 5 (G909)	10
6.MAIL BOX 6 (G909)	12
7.BRIDGE UNIT (G912)	14
PARTS INDEX.....	17

1.MAIL BOX 1 (G909)

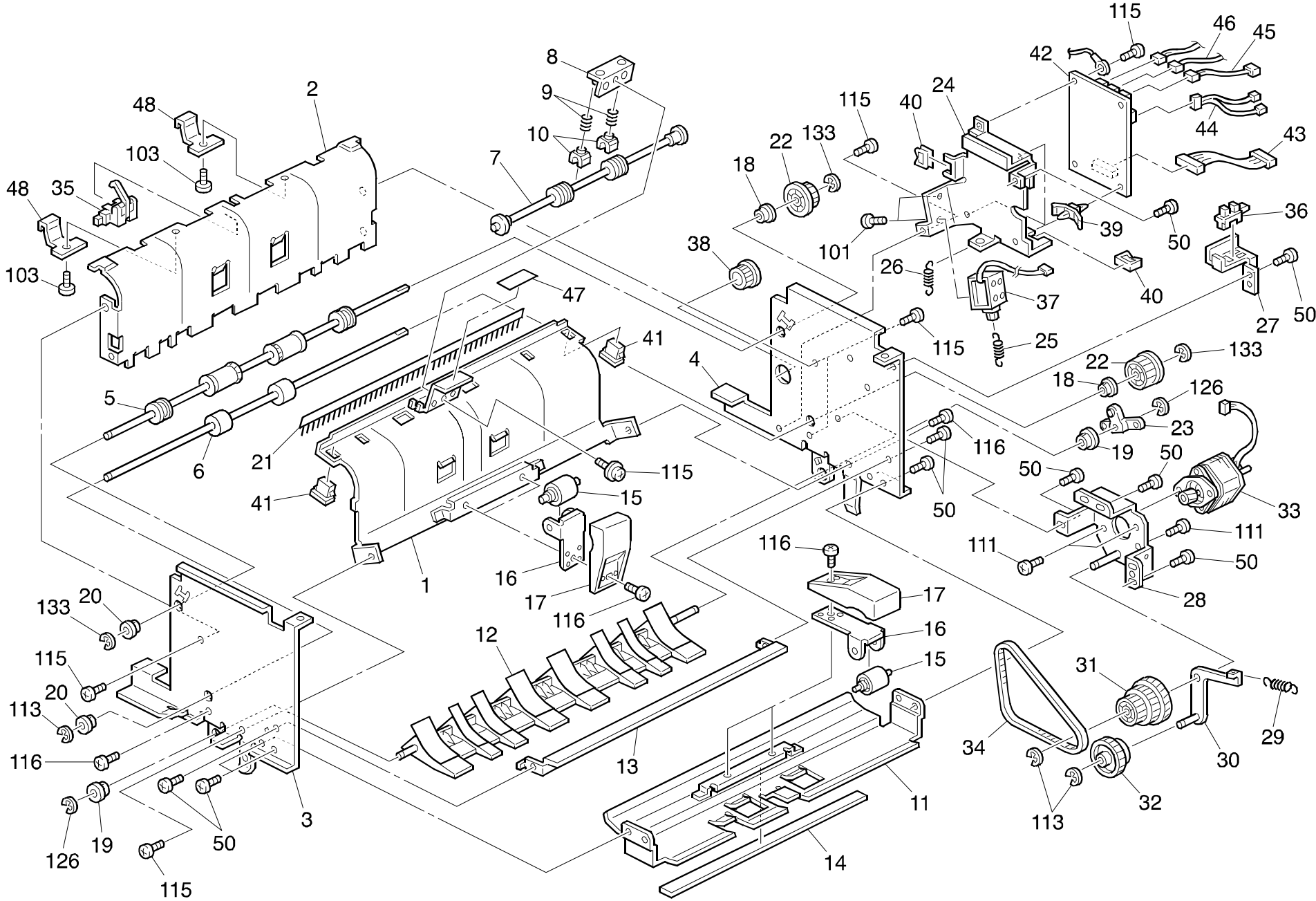


1.MAIL BOX 1 (G909)

Index No.	Part No.	Description	Q'ty Per Assembly
1	G909 0101	Upper Cover	1
2	G909 0102	Sheet - Paper Detection	2
3	G909 0103	Top Cover	1
4	G909 0104	Magnet Catch	1
5	G909 0105	Pressure Spring	2
6	G909 0106	Holderr - Spring	1
7	G909 0107	Plate - Upper Cover	1
8	G909 0108	Sensor Plate	1
9	G909 0109	Sensor Bracket	1
10	G909 0110	Front Left Cover	1
11	G909 0111	Hinge - Front Left Cover	2
12	G909 0112	Upper Hinge - Front Cover	1
13	G909 0113	Front Cover	1
14	G909 0114	Lower Hinge - Front Cover	1
15	G909 0115	Front Cover Plate	1
16	G909 0116	Rear Cover	1
17	G909 0117	Paper Height Sensor	1
18	G909 0118	Magnet - CA - 0106A	3
19	G909 0119	Clamp - NK - 4N	1
20	G909 0120	Photosensor - YAP - VR06	1
21	G909 0121	Photosensor - YAP - VR07	1
22	G909 0122	Harness - Paper Height Sensor	1
23	G909 0123	Grounding Wire	1
24	G909 0124	Decal - Jam Removal	3
25	A697 1135	Front Joint Bracket	1
26	A697 1136	Rear Joint Bracket	1
27	G909 0127	Sponge	1
28	G909 0128	Decal - Bin Number	1
29	G909 0134	Exit Guide Mylar	1
30	G909 0130	Copy Tray Guide	1
31	G909 0131	Cover - Copy Tray Ruide	1
32	G909 1121	Toothed Washer - M3	2
33	G909 0132	Copy Tray	1

Index No.	Part No.	Description	Q'ty Per Assembly
103	0354 0060B	Screw - M4x6	
106	0451 4014B	Tapping Screw - M4x14	
109	0353 0060B	Philips Pan Head Screw - M3x6	
110	0313 0100B	Philips Pan Head Screw - M3x10	
113	0453 3008B	Bind Tapping Screw - M3x8	
115	0314 0060B	Philips Pan Head Screw - M4x6	
116	0451 4008B	Philips Tapping Screw - M4x8	
117	0314 0060B	Philips Pan Head Screw - M4x6	
119	0451 4010B	Tapping Screw - 4x10	
124	0720 0030B	Retainig Ring - M3	
128	0354 0060B	Screw - M4x6	

2.MAIL BOX 2 (G909)

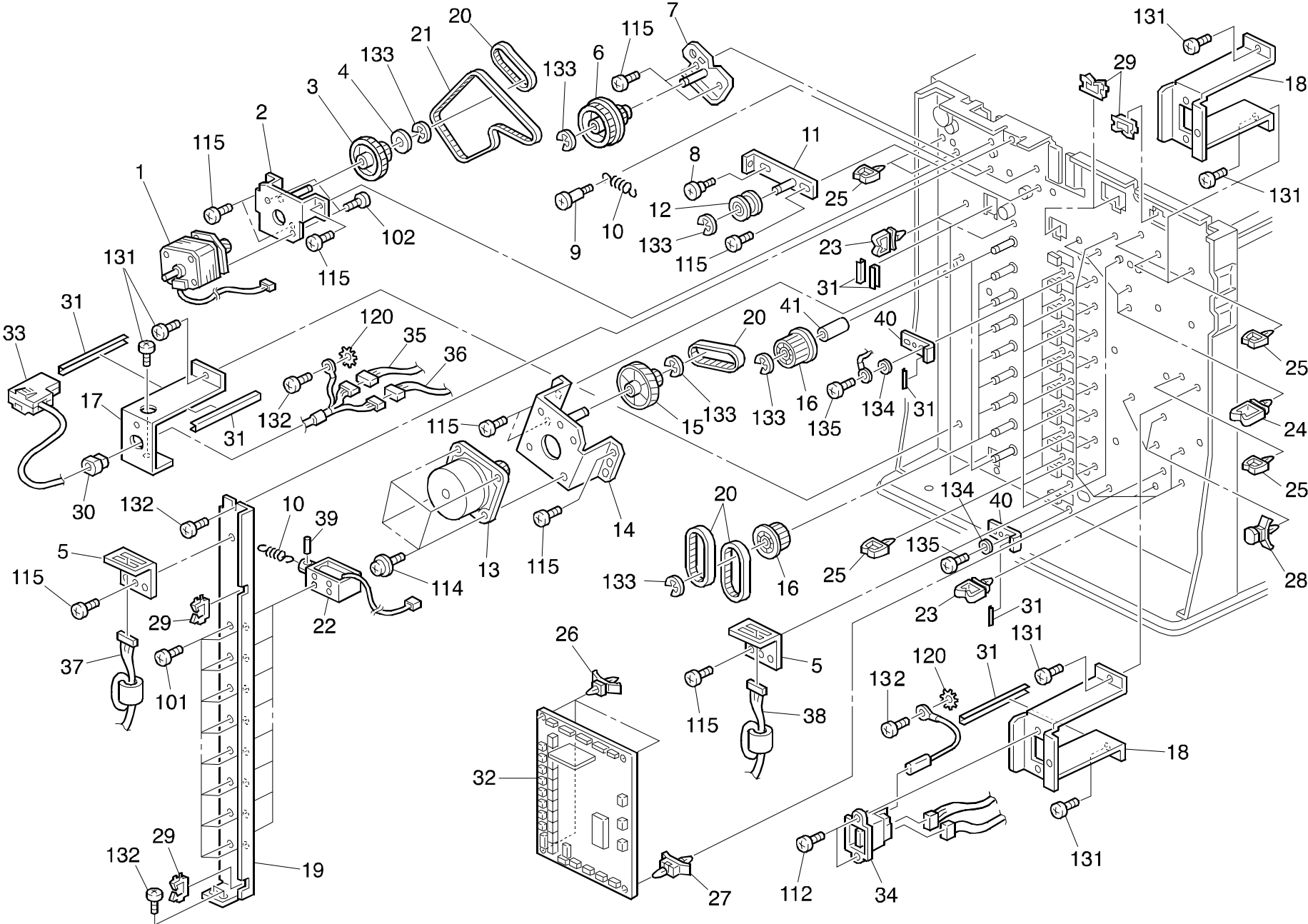


2.MAIL BOX 2 (G909)

Index No.	Part No.	Description	Q'ty Per Assembly
1	G909 0201	Upper Guide Plate	1
2	G909 0202	Lower Guide Plate	1
3	G909 0203	Front Side Plate - PT	1
4	G909 0204	Rear Side Plate - PT	1
5	G909 0205	Exit Roller - PT	1
6	G909 0206	Relay Roller - PT	1
7	G909 0207	Driven Roller - PT	1
8	G909 0208	Bracket - Driven Roller	1
9	G909 0209	Tension Spring	2
10	G909 0210	Bushing - Driven Roller	2
11	G909 0211	Upper Entrance Guide	1
12	G909 0212	Junction Gate - PT	1
13	G909 0213	Entrance Stay - PT	1
14	G909 0214	Cushion Junction Gate	1
15	G909 0215	Tension Roller	4
16	G909 0216	Roller Holder	4
17	G909 0217	Cover - Tension Roller	4
18	G909 0218	Bushing - M6	2
19	G909 0219	Bushing - M8	2
20	G909 0220	Bushing - M6	2
21	G909 0221	Antistaic Brush	1
22	G909 0222	Gear - Exit Roller	2
23	G909 0223	Lever - Junction Gate	1
24	G909 0224	Bracket - PT Control Board	1
25	G909 0225	Spring - Junction Gate Sol.	1
26	G909 0226	Spring - Junction Gate	1
27	G909 0227	Sensor Bracket	1
28	G909 0228	Bracket - PT Motor	1
29	G909 0229	Spring - Relay Bracket	1
30	G909 0230	Relay Bracket	1
31	G909 0231	Drive Gear - PT Motor	1
32	G909 0232	Relay Gear	1
33	G909 0233	DC Stepping Motor	1
34	G909 0234	Timing Gelt - B40S2M370	1
35	G909 0235	Feeler Sensor	1

Index No.	Part No.	Description	Q'ty Per Assembly
36	G909 0236	Photointerruptor	1
37	G909 0237	Junction Gate Solenoid	1
38	G909 0238	Bush - MP1050	1
39	G909 0239	Locking Support - Kgls - 3S	3
40	G909 0240	Edge Sadle - EDS1	2
41	G909 0241	Magnet - CA - 0033A	2
42	G909 0242	PT Control Board	1
43	G909 0243	Harness - PT2	1
44	G909 0244	Harness - Paper Sensor	1
45	G909 0245	Harness - PT Door	1
46	G909 0246	Harness - PT Exit	1
47	G909 0247	Decal - Jam Location	1
48	G909 0252	Bracket - Lower Guide	2
50	G909 0248	Screw - M4	10
101	0353 0040B	Screw - M3x4	
103	0354 0060B	Screw - M4x6	
111	0453 3006B	Tapping Screw - M3x6	
113	0720 0050B	Retaining Ring - M5	
115	0314 0060B	Philips Pan Head Screw - M4x6	
116	0451 4008B	Philips Tapping Screw - M4x8	
126	0720 0060B	Retaining Ring - M6	

3.MAIL BOX 3 (G909)

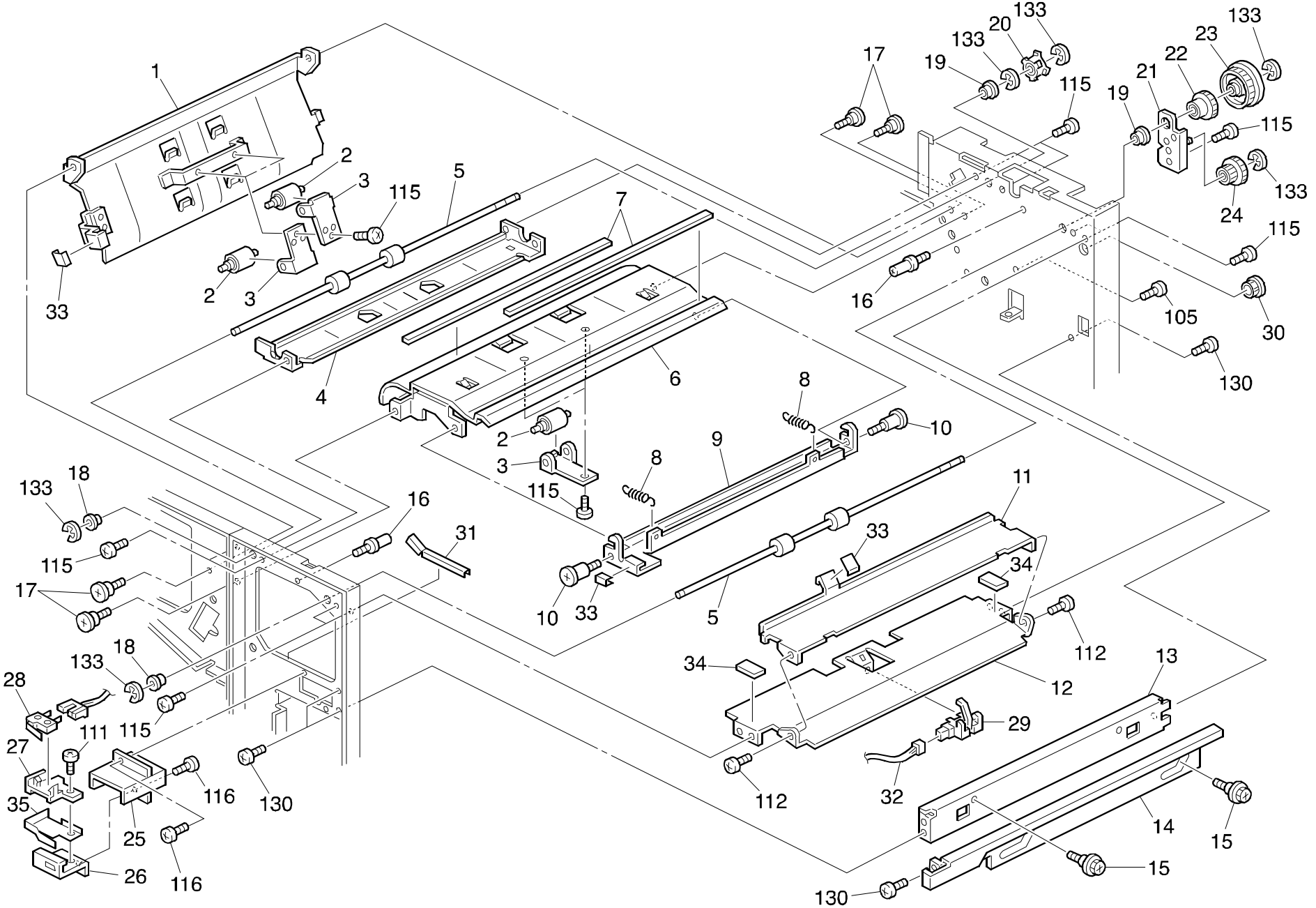


3.MAIL BOX 3 (G909)

Index No.	Part No.	Description	Q'ty Per Assembly
1	G909 0301	Entrance Motor	1
2	G909 0302	Bracket - Entrance Motor	1
3	G909 0303	Gear - Entrance Motor	1
4	G909 0304	Spacer - Entrance Motor	1
5	G909 0305	Bracket - Relay Connector	2
6	G909 0306	Joint Gear	1
7	G909 0307	Bracket - Joint Gear	1
8	G909 0308	Stepped Screw - M2.2	1
9	G909 0309	Stepped Screw - M4	1
10	G909 0310	Spring - Solenoid	9
11	G909 0311	Bracket - Tension Pulley	1
12	G909 0312	Tension Pulley	1
13	G909 0313	DC Motor - W	1
14	G909 0314	Bracket - DC Motor	1
15	G909 0315	Gear - DC Motor	1
16	G909 0222	Gear - Exit Roller	9
17	G909 0317	Bracket - I/F Cable - P	1
18	G909 0318	Bracket - I/F Cable - F	2
19	G909 0319	Bracket - Solenoid	1
20	G909 0320	Timing Belt - B40S2M190	10
21	G909 0321	Timing Belt - B40S2M94	1
22	G909 0237	Junction Gate Solenoid	8
23	G909 0323	Coamp - WS-1NS	4
24	G909 0324	Clamp - WS-2NS	4
25	G909 0325	Clamp - UAMS-05-0	12
26	G909 0239	Locking Support - KGLS - 3S	3
27	G909 0327	Locking Support - KGS-3S	1
28	G909 0328	Locking Support - KGPS-3S	3
29	G909 0240	Edge Sadle - EDS1	4
30	G909 0330	Grommet	1
31	G909 0331	Edge Sadle - CE-012	3
32	G909 0332	Main Board	1
33	G909 0333	Interface Cable - P	1
34	G909 0334	Interface Cable - F	1
35	G909 0335	Relay Harness - I/F Cable - 1	1

Index No.	Part No.	Description	Q'ty Per Assembly
36	G909 0336	Relay Harness - I/F Cable - 2	1
37	G909 0337	Relay Harness - PT	1
38	G909 0338	Relay Harness - RU	1
39	G909 1123	Spring Pin - M3x10	8
40	G909 0340	Spacer	10
41	G909 0341	Bracket Tension	2
101	0353 0040B	Screw - M3x4	
102	0353 0060B	Philips Pan Head Screw - M3x6	
112	0451 3008B	Tapping Screw - M3x8	
114	0313 0100B	Philips Pan Head Screw - M3x10	
115	0314 0060B	Philips Pan Head Screw - M4x6	
120	0701 0040B	Flat Washer - M4	
131	0354 0060B	Screw - M4x6	
132	0451 4008B	Philips Tapping Screw - M4x8	
133	0720 0050B	Retaining Ring - M5	
134	0700 0040B	Flat Washer - M4 100 Pcs/Set	
135	0353 0080B	Screw - M3x8	

4.MAIL BOX 4 (G909)

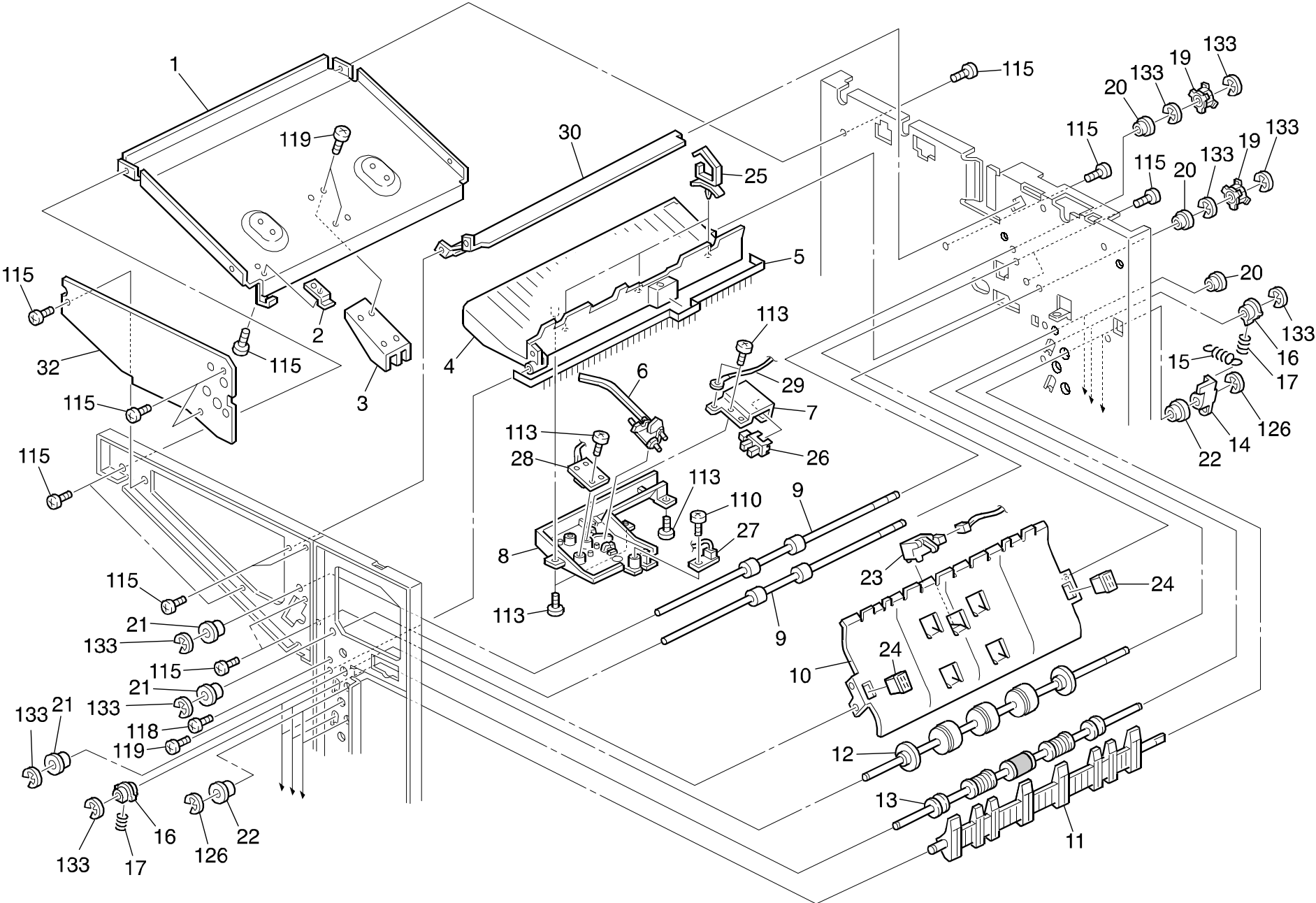


4.MAIL BOX 4 (G909)

Index No.	Part No.	Description	Q'ty Per Assembly
1	G909 0401	Upper Right Cover - MB	1
2	G909 0215	Tension Roller	6
3	G909 0216	Roller Holder	6
4	G909 0404	Upper Guide	1
5	G909 0405	Relay Roller	2
6	G909 0406	Lower Guide	1
7	G909 0214	Cushion Junction Gate	2
8	G909 0408	Spring - Guide Plate	2
9	G909 0409	Guide Plate	1
10	G909 0410	Stepped Screw - M4	1
11	G909 0411	Upper Entrance Guide	1
12	G909 0412	Lower Entrance Guide	1
13	A697 1100	Right Stay	1
14	A697 1127	Joint Lever	1
15	G909 0415	Stepped Screw - Lever	2
16	G909 0416	Stud	2
17	G909 0308	Stepped Screw - M2.2	4
18	G909 0220	Bushing - M6	2
19	G909 0218	Bushing - M6	2
20	G909 0420	Pulley - Relay Roller	1
21	G909 0421	Bracket - Entrance Gear	1
22	G909 0422	Gear - Transport	1
23	G909 0423	Entrance Gear - PT	1
24	G909 0424	Entrance Gear	1
25	G909 0425	Cover - Door Switch	1
26	G909 0426	Plate - Door Switch	1
27	G909 0427	Holder - Door Switch	1
28	G909 0428	Microswitch	1
29	G909 0235	Feeler Sensor	1
30	G909 0238	Bush - MP1050	1
31	G909 0331	Edge Sadle - CE-012	1
32	G909 0432	Harness - Sensor	1
33	G909 0247	Decal - Jam Location	3
34	G909 0434	Cushion - Guide Plate	2
35	G909 0435	Pressure Plate - Switch	1

Index No.	Part No.	Description	Q'ty Per Assembly
105	0314 0120B	Philips Pan Head Screw - M4x12	
111	0453 3006B	Tapping Screw - M3x6	
112	0451 3008B	Tapping Screw - M3x8	
115	0314 0060B	Philips Pan Head Screw - M4x6	
116	0451 4008B	Philips Tapping Screw - M4x8	
130	0353 0060B	Philips Pan Head Screw - M3x6	
133	0720 0050B	Retaining Ring - M5	

5.MAIL BOX 5 (G909)



5.MAIL BOX 5 (G909)

Index No.	Part No.	Description	Q'ty Per Assembly
1	G909 0501	Upper Stay - Bin	1
2	G909 0502	Fixing Plate - Bin	1
3	G909 0503	Rib - Upper Stay	1
4	G909 0504	Upper Bin	1
5	G909 0221	Antistatic Brush	1
6	G909 0506	Feeler - Paper Height	1
7	G909 0507	Sensor Plate	1
8	G909 0508	Sensor Cover	1
9	G909 0405	Relay Roller	2
10	G909 0510	Upper Left Guide	1
11	G909 0511	Junction Gate - Bin	8
12	G909 0542	Exit Roller - Bin	8
13	G909 0513	Driven Roller	8
14	G909 0514	Junction Gate Lever	8
15	G909 0515	Spring	8
16	G909 0516	Spring Holder	16
17	G909 0517	Tension Spring	16
19	G909 0420	Pulley - Relay Roller	2
20	G909 0218	Bushing - M6	10
21	G909 0222	Gear - Exit Roller	10
22	G909 0219	Bushing - M8	16
23	G909 0523	Feeler Sensor	1
24	G909 0241	Magnet - CA - 0033A	2
25	G909 0323	Coamp - WS-1NS	3
26	G909 0236	Photointerruptor	1
27	G909 0527	Photosensor - YAP-VR03	1
28	G909 0528	Photosensor - YAP-VR08	1
29	G909 0529	Grounding Wire	1
30	G909 0530	Upper Guide - Bin	1
32	G909 0541	Front Plate - Upper Stay	1

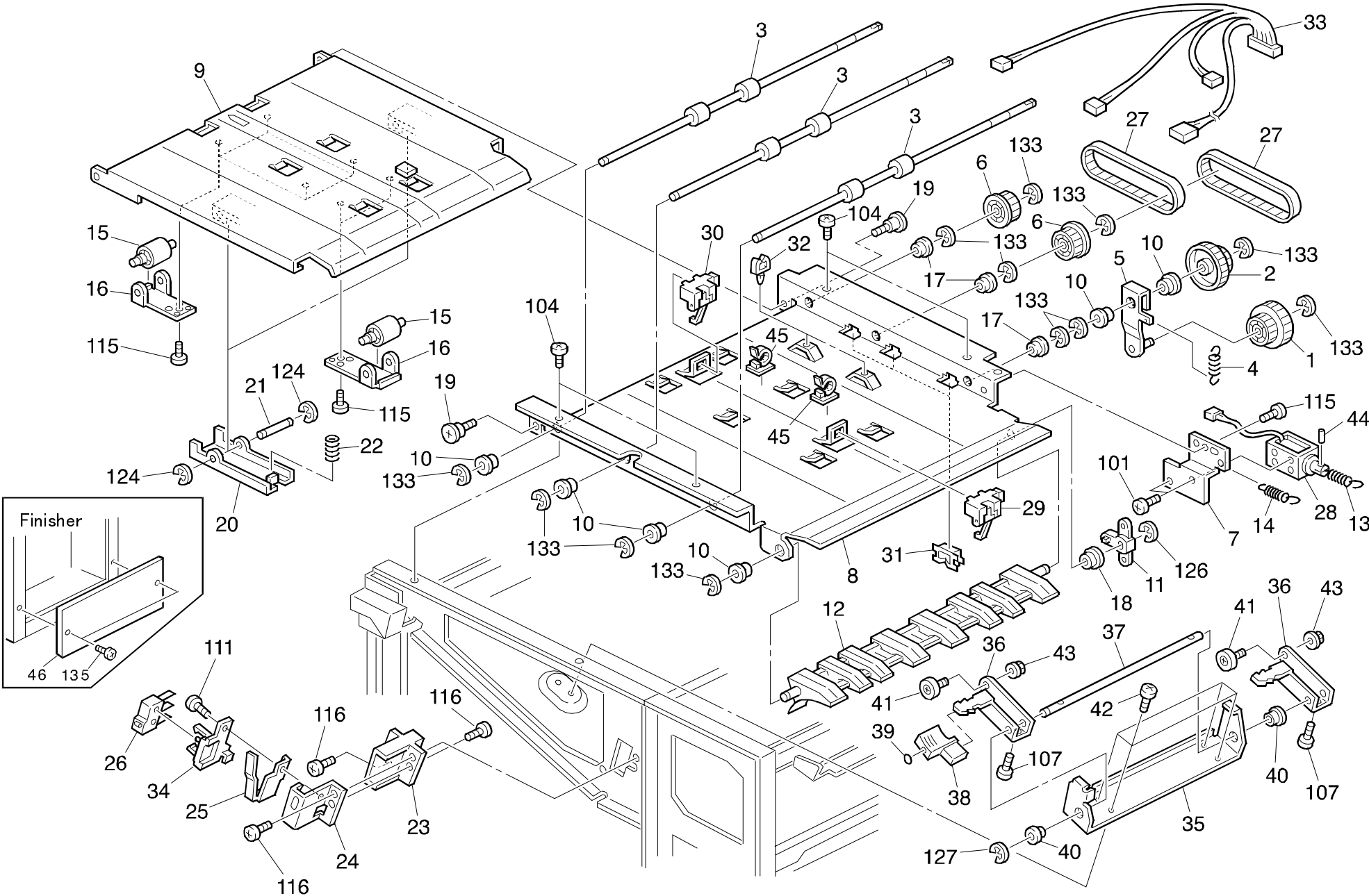
Index No.	Part No.	Description	Q'ty Per Assembly
110	0313 0100B	Philips Pan Head Screw - M3x10	
113	0453 3006B	Tapping Screw - M3x6	
115	0314 0060B	Philips Pan Head Screw - M4x6	
118	0451 4010B	Tapping Screw - 4x10	
119	0451 4010B	Tapping Screw - 4x10	
126	0720 0060B	Retaining Ring - M6	
133	0720 0050B	Retaining Ring - M5	

6.MAIL BOX 6 (G909)

Index No.	Part No.	Description	Q'ty Per Assembly
2	G909 0602	Right Front Frame	1
3	G909 0603	Front Frame	1
4	G909 0635	Sheet - Base	1
5	G909 0605	Right Frame	1
6	G909 0215	Tension Roller	12
7	G909 0216	Roller Holder	12
8	G909 0608	Stepped Screw - M2.7	2
9	G909 0609	Bushing	2
10	G909 0610	Right Bracket - Release Lever	1
11	G909 0611	Left Bracket - Release Lever	1
12	G909 0612	Release Lever	1
13	G909 0613	Knob - Release Lever	1
14	G909 0614	Spring - Release Lever	1
15	G909 0615	Stepped Screw - M4	1
16	G909 0616	Stepped Screw - M2.2	3
17	G909 0617	Left Front Frame	1
18	G909 0618	Cover Holder	1
19	G909 0619	Bin	9
20	G909 0508	Sensor Cover	9
21	G909 0507	Sensor Plate	8
22	G909 0506	Feeler - Paper Heigh	8
23	G909 0221	Antistaic Brush	8
24	G909 0624	Sheet - Paper Detection	9
25	G909 0236	Photointerruptor	8
26	G909 0626	Castor	4
27	G909 0627	Photo Sensor - YAP-VR04	2
28	G909 0628	Photo Sensor - YAP-VR05	1
29	G909 0629	Photo Sensor - YAP-VR09	6
30	G909 0630	Photo Sensor - YAP-VR10	2
31	G909 0631	Photo Sensor - YAP-VR11	1
32	G909 0529	Grounding Wire	8
33	G909 0247	Decal - Jam Location	9
34	G909 0636	Right Bracket - Base	1
35	G909 0637	Left Bracket - Base	1
36	G909 1122	Nut - M6	1

Index No.	Part No.	Description	Q'ty Per Assembly
104	0354 0080B	Screw - M4X8	
108	0316 0140B	Screw - M6x14	
110	0313 0100B	Philips Pan Head Screw - M3x10	
113	0453 3006B	Tapping Screw - M3x6	
115	0314 0060B	Philips Pan Head Screw - M4x6	
118	0451 4010B	Tapping Screw - 4x10	
119	0451 4010B	Tapping Screw - 4x10	
131	0354 0060B	Screw - M4x6	
132	0451 4008B	Philips Tapping Screw - M4x8	

7.BRIDGE UNIT (G912)



7.BRIDGE UNIT (G912)

Index No.	Part No.	Description	Q'ty Per Assembly
1	G909 0232	Relay Gear	1
2	G909 0702	Relay Gear	1
3	G909 0703	Transport Roller	3
4	G909 0229	Spring - Relay Bracket	1
5	G909 0705	Bracket - Relay Gear	1
6	G909 0222	Gear - Exit Roller	2
7	G909 0707	Bracket - Solenoid	1
8	G909 0708	Upper Transport Guide	1
9	G909 0709	Lower Transport Guide	1
10	G909 0220	Bushin - M6	6
11	G909 0711	Lever - Junction Gate	1
12	G909 0712	Junction Gate	1
13	G909 0713	Spring - Solenoid	1
14	G909 0515	Spring	1
15	G909 0215	Tension Roller	6
16	G909 0216	Roller Holder	6
17	G909 0218	Bushing - M6	3
18	G909 0219	Bushing - M8	1
19	G909 0308	Stepped Screw - M2.2	2
20	G909 0720	Pressure Plate	2
21	G909 0721	Shafe - Pressur Plate	2
22	G909 0722	Spring - Pressur Plate	2
23	G909 0425	Cover - Door Switch	1
24	G909 0426	Plate - Door Switch	1
25	G909 0725	Plate - Door Switch	1
26	G909 0428	Microswitch	1
27	G909 0727	Timing Belt - B40S2M350	2
28	G909 0237	Junction Gate Solenoid	1
29	G909 0235	Feeler Sensor	1
30	G909 0523	Feeler Sensor	1
31	G909 0240	Edge Sadle - Eds1	3
32	G909 0325	Clamp - UAMS-05-0	2
33	G909 0733	Relay Harness	1
34	G909 0734	Holder - Microswitch	1
35	G909 0531	Guide Bracket	1

Index No.	Part No.	Description	Q'ty Per Assembly
36	G909 0532	Arm - Guide Bracket	2
37	G909 0533	Shaft - Guide Bracket	1
38	G020 3912	Transport Lever	1
39	G909 0535	Decal - W4	1
40	G909 0536	Bushing - M8	2
41	G909 0537	Bearing - DR - 19 - B1	2
42	G909 0538	Screw - M4	4
43	G909 1122	Nut - M6	2
44	G909 1123	Spring Pin - M3x10	1
45	G909 0739	Clamp - Ckn - 05	2
46	G909 0749	Finisher Lower Cover	1
101	0353 0040B	Screw - M3x4	
104	0354 0080B	Screw - M4x8	
107	0314 0160B	Philips Pan Head Screw - M4x16	
111	0453 3006B	Tapping Screw - M3x6	
115	0314 0060B	Philips Pan Head Screw - M4x6	
116	0451 4008B	Philips Tapping Screw - M4x8	
124	0720 0030B	Retainig Ring - M3	
126	0720 0060B	Retaining Ring - M6	
127	0720 0060B	Retaining Ring - M6	
133	0720 0050B	Retaining Ring - M5	
135	0353 0080B	Screw - M3x8	

PARTS INDEX

Part No.	Description	Page and Index No.
G909 0101	Upper Cover	3- 1
G909 0102	Sheet - Paper Detection	3- 2
G909 0103	Top Cover	3- 3
G909 0104	Magnet Catch	3- 4
G909 0105	Pressure Spring	3- 5
G909 0106	Holderr - Spring	3- 6
G909 0107	Plate - Upper Cover	3- 7
G909 0108	Sensor Plate	3- 8
G909 0109	Sensor Bracket	3- 9
G909 0110	Front Left Cover	3- 10
G909 0111	Hinge - Front Left Cover	3- 11
G909 0112	Upper Hinge - Front Cover	3- 12
G909 0113	Front Cover	3- 13
G909 0114	Lower Hinge - Front Cover	3- 14
G909 0115	Front Cover Plate	3- 15
G909 0116	Rear Cover	3- 16
G909 0117	Paper Height Sensor	3- 17
G909 0118	Magnet - CA - 0106A	3- 18
G909 0119	Clamp - NK - 4N	3- 19
G909 0120	Photosensor - YAP - VR06	3- 20
G909 0121	Photosensor - YAP - VR07	3- 21
G909 0122	Harness - Paper Height Sensor	3- 22
G909 0123	Grounding Wire	3- 23
G909 0124	Decal - Jam Removal	3- 24
G909 0127	Sponge	3- 27
G909 0128	Decal - Bin Number	3- 28
G909 0130	Copy Tray Guide	3- 30
G909 0131	Cover - Copy Tray Ruide	3- 31
G909 0132	Copy Tray	3- 33
G909 0134	Exit Guide Mylar	3- 29
G909 0201	Upper Guide Plate	5- 1
G909 0202	Lower Guide Plate	5- 2
G909 0203	Front Side Plate - PT	5- 3
G909 0204	Rear Side Plate - PT	5- 4
G909 0205	Exit Roller - PT	5- 5

Part No.	Description	Page and Index No
G909 0206	Relay Roller - PT	5- 6
G909 0207	Driven Roller - PT	5- 7
G909 0208	Bracket - Driven Roller	5- 8
G909 0209	Tension Spring	5- 9
G909 0210	Bushing - Driven Roller	5- 10
G909 0211	Upper Entrance Guide	5- 11
G909 0212	Junction Gate - PT	5- 12
G909 0213	Entrance Stay - PT	5- 13
G909 0214	Cushion Junction Gate	9- 7
G909 0214	Cushion Junction Gate	5- 14
G909 0215	Tension Roller	15- 15
G909 0215	Tension Roller	9- 2
G909 0215	Tension Roller	5- 15
G909 0215	Tension Roller	13- 6
G909 0216	Roller Holder	13- 7
G909 0216	Roller Holder	5- 16
G909 0216	Roller Holder	15- 16
G909 0216	Roller Holder	9- 3
G909 0217	Cover - Tension Roller	5- 17
G909 0218	Bushing - M6	15- 17
G909 0218	Bushing - M6	9- 19
G909 0218	Bushing - M6	11- 20
G909 0218	Bushing - M6	5- 18
G909 0219	Bushing - M8	15- 18
G909 0219	Bushing - M8	5- 19
G909 0219	Bushing - M8	11- 22
G909 0220	Bushing - M6	9- 18
G909 0220	Bushing - M6	5- 20
G909 0220	Bushin - M6	15- 10
G909 0221	Antistaic Brush	5- 21
G909 0221	Antistaic Brush	13- 23
G909 0221	Antistaic Brush	11- 5
G909 0222	Gear - Exit Roller	5- 22
G909 0222	Gear - Exit Roller	15- 6
G909 0222	Gear - Exit Roller	7- 16

Part No.	Description	Page and Index No.
G909 0222	Gear - Exit Roller	11- 21
G909 0223	Lever - Junction Gate	5- 23
G909 0224	Bracket - PT Control Board	5- 24
G909 0225	Spring - Junction Gate Sol.	5- 25
G909 0226	Spring - Junction Gate	5- 26
G909 0227	Sensor Bracket	5- 27
G909 0228	Bracket - PT Motor	5- 28
G909 0229	Spring - Relay Bracket	5- 29
G909 0229	Spring - Relay Bracket	15- 4
G909 0230	Relay Bracket	5- 30
G909 0231	Drive Gear - PT Motor	5- 31
G909 0232	Relay Gear	15- 1
G909 0232	Relay Gear	5- 32
G909 0233	DC Stepping Motor	5- 33
G909 0234	Timing Gelt - B40S2M370	5- 34
G909 0235	Feeler Sensor	9- 29
G909 0235	Feeler Sensor	15- 29
G909 0235	Feeler Sensor	5- 35
G909 0236	Photointerruptor	11- 26
G909 0236	Photointerruptor	13- 25
G909 0236	Photointerruptor	5- 36
G909 0237	Junction Gate Solenoid	7- 22
G909 0237	Junction Gate Solenoid	15- 28
G909 0237	Junction Gate Solenoid	5- 37
G909 0238	Bush - MP1050	9- 30
G909 0238	Bush - MP1050	5- 38
G909 0239	Locking Support - KGLS - 3S	7- 26
G909 0239	Locking Support - Kgls - 3S	5- 39
G909 0240	Edge Sadle - EDS1	7- 29
G909 0240	Edge Sadle - Eds1	15- 31
G909 0240	Edge Sadle - EDS1	5- 40
G909 0241	Magnet - CA - 0033A	5- 41
G909 0241	Magnet - CA - 0033A	11- 24
G909 0242	PT Control Board	5- 42
G909 0243	Harness - PT2	5- 43

Part No.	Description	Page and Index No
G909 0244	Harness - Paper Sensor	5- 44
G909 0245	Harness - PT Door	5- 45
G909 0246	Harness - PT Exit	5- 46
G909 0247	Decal - Jam Location	13- 33
G909 0247	Decal - Jam Location	9- 33
G909 0247	Decal - Jam Location	5- 47
G909 0248	Screw - M4	5- 50
G909 0252	Bracket - Lower Guide	5- 48
G909 0301	Entrance Motor	7- 1
G909 0302	Bracket - Entrance Motor	7- 2
G909 0303	Gear - Entrance Motor	7- 3
G909 0304	Spacer - Entrance Motor	7- 4
G909 0305	Bracket - Relay Connector	7- 5
G909 0306	Joint Gear	7- 6
G909 0307	Bracket - Joint Gear	7- 7
G909 0308	Stepped Screw - M2.2	7- 8
G909 0308	Stepped Screw - M2.2	9- 17
G909 0308	Stepped Screw - M2.2	15- 19
G909 0309	Stepped Screw - M4	7- 9
G909 0310	Spring - Solenoid	7- 10
G909 0311	Bracket - Tension Pulley	7- 11
G909 0312	Tension Pulley	7- 12
G909 0313	DC Motor - W	7- 13
G909 0314	Bracket - DC Motor	7- 14
G909 0315	Gear - DC Motor	7- 15
G909 0317	Bracket - I/F Cable - P	7- 17
G909 0318	Bracket - I/F Cable - F	7- 18
G909 0319	Bracket - Solenoid	7- 19
G909 0320	Timing Belt - B40S2M190	7- 20
G909 0321	Timing Belt - B40S2M94	7- 21
G909 0323	Coamp - WS-1NS	11- 25
G909 0323	Coamp - WS-1NS	7- 23
G909 0324	Clamp - WS-2NS	7- 24
G909 0325	Clamp - UAMS-05-0	7- 25
G909 0325	Clamp - UAMS-05-0	15- 32

Part No.	Description	Page and Index No.
G909 0327	Locking Support - KGS-3S	7- 27
G909 0328	Locking Support - KGPS-3S	7- 28
G909 0330	Grommet	7- 30
G909 0331	Edge Sadle - CE-012	9- 31
G909 0331	Edge Sadle - CE-012	7- 31
G909 0332	Main Board	7- 32
G909 0333	Interface Cable - P	7- 33
G909 0334	Interface Cable - F	7- 34
G909 0335	Relay Harness - I/F Cable - 1	7- 35
G909 0336	Relay Harness - I/F Cable - 2	7- 36
G909 0337	Relay Harness - PT	7- 37
G909 0338	Relay Harness - RU	7- 38
G909 0340	Spacer	7- 40
G909 0341	Bracket Tension	7- 41
G909 0401	Upper Right Cover - MB	9- 1
G909 0404	Upper Guide	9- 4
G909 0405	Relay Roller	9- 5
G909 0405	Relay Roller	11- 9
G909 0406	Lower Guide	9- 6
G909 0408	Spring - Guide Plate	9- 8
G909 0409	Guide Plate	9- 9
G909 0410	Stepped Screw - M4	9- 10
G909 0411	Upper Entrance Guide	9- 11
G909 0412	Lower Entrance Guide	9- 12
G909 0415	Stepped Screw - Lever	9- 15
G909 0416	Stud	9- 16
G909 0420	Pulley - Relay Roller	11- 19
G909 0420	Pulley - Relay Roller	9- 20
G909 0421	Bracket - Entrance Gear	9- 21
G909 0422	Gear - Transport	9- 22
G909 0423	Entrance Gear - PT	9- 23
G909 0424	Entrance Gear	9- 24
G909 0425	Cover - Door Switch	9- 25
G909 0425	Cover - Door Switch	15- 23
G909 0426	Plate - Door Switch	15- 24

Part No.	Description	Page and Index No
G909 0426	Plate - Door Switch	9- 26
G909 0427	Holder - Door Switch	9- 27
G909 0428	Microswitch	15- 26
G909 0428	Microswitch	9- 28
G909 0432	Harness - Sensor	9- 32
G909 0434	Cushion - Guide Plate	9- 34
G909 0435	Pressure Plate - Switch	9- 35
G909 0501	Upper Stay - Bin	11- 1
G909 0502	Fixing Plate - Bin	11- 2
G909 0503	Rib - Upper Stay	11- 3
G909 0504	Upper Bin	11- 4
G909 0506	Feeler - Paper Heigh	11- 6
G909 0506	Feeler - Paper Heigh	13- 22
G909 0507	Sensor Plate	11- 7
G909 0507	Sensor Plate	13- 21
G909 0508	Sensor Cover	13- 20
G909 0508	Sensor Cover	11- 8
G909 0510	Upper Left Guide	11- 10
G909 0511	Junction Gate - Bin	11- 11
G909 0513	Driven Roller	11- 13
G909 0514	Junction Gate Lever	11- 14
G909 0515	Spring	15- 14
G909 0515	Spring	11- 15
G909 0516	Spring Holder	11- 16
G909 0517	Tension Spring	11- 17
G909 0523	Feeler Sensor	11- 23
G909 0523	Feeler Sensor	15- 30
G909 0527	Photosensor - YAP-VR03	11- 27
G909 0528	Photosensor - YAP-VR08	11- 28
G909 0529	Grounding Wire	11- 29
G909 0529	Grounding Wire	13- 32
G909 0530	Upper Guide - Bin	11- 30
G909 0531	Guide Bracket	15- 35
G909 0532	Arm - Guide Bracket	15- 36
G909 0533	Shaft - Guide Bracket	15- 37

Part No.	Description	Page and Index No.
G909 0535	Decal - W4	15- 39
G909 0536	Bushing - M8	15- 40
G909 0537	Bearing - DR - 19 - B1	15- 41
G909 0538	Screw - M4	15- 42
G909 0541	Front Plate - Upper Stay	11- 32
G909 0542	Exit Roller - Bin	11- 12
G909 0602	Right Front Frame	13- 2
G909 0603	Front Frame	13- 3
G909 0605	Right Frame	13- 5
G909 0608	Stepped Screw - M2.7	13- 8
G909 0609	Bushing	13- 9
G909 0610	Right Bracket - Release Lever	13- 10
G909 0611	Left Bracket - Release Lever	13- 11
G909 0612	Release Lever	13- 12
G909 0613	Knob - Release Lever	13- 13
G909 0614	Spring - Release Lever	13- 14
G909 0615	Stepped Screw - M4	13- 15
G909 0616	Stepped Screw - M2.2	13- 16
G909 0617	Left Front Frame	13- 17
G909 0618	Cover Holder	13- 18
G909 0619	Bin	13- 19
G909 0624	Sheet - Paper Detection	13- 24
G909 0626	Castor	13- 26
G909 0627	Photo Sensor - YAP-VR04	13- 27
G909 0628	Photo Sensor - YAP-VR05	13- 28
G909 0629	Photo Sensor - YAP-VR09	13- 29
G909 0630	Photo Sensor - YAP-VR10	13- 30
G909 0631	Photo Sensor - YAP-VR11	13- 31
G909 0635	Sheet - Base	13- 4
G909 0636	Right Bracket - Base	13- 34
G909 0637	Left Bracket - Base	13- 35
G909 0702	Relay Gear	15- 2
G909 0703	Transport Roller	15- 3
G909 0705	Bracket - Relay Gear	15- 5
G909 0707	Bracket - Solenoid	15- 7

Part No.	Description	Page and Index No
G909 0708	Upper Transport Guide	15- 8
G909 0709	Lower Transport Guide	15- 9
G909 0711	Lever - Junction Gate	15- 11
G909 0712	Junction Gate	15- 12
G909 0713	Spring - Solenoid	15- 13
G909 0720	Pressure Plate	15- 20
G909 0721	Shaft - Pressur Plate	15- 21
G909 0722	Spring - Pressur Plate	15- 22
G909 0725	Plate - Door Switch	15- 25
G909 0727	Timing Belt - B40S2M350	15- 27
G909 0733	Relay Harness	15- 33
G909 0734	Holder - Microswitch	15- 34
G909 0739	Clamp - Ckn - 05	15- 45
G909 0749	Finisher Lower Cover	15- 46
G909 1121	Toothed Washer - M3	3- 32
G909 1122	Nut - M6	13- 36
G909 1122	Nut - M6	15- 43
G909 1123	Spring Pin - M3x10	15- 44
G909 1123	Spring Pin - M3x10	7- 39

Part No.	Description	Page and Index No.
G020 3912	Transport Lever	15- 38

Part No.	Description	Page and Index No
A697 1100	Right Stay	9- 13
A697 1127	Joint Lever	9- 14
A697 1135	Front Joint Bracket	3- 25
A697 1136	Rear Joint Bracket	3- 26

Part No.	Description	Page and Index No.
0313 0100B	Philips Pan Head Screw - M3x10	3-110
0313 0100B	Philips Pan Head Screw - M3x10	7-114
0313 0100B	Philips Pan Head Screw - M3x10	13-110
0313 0100B	Philips Pan Head Screw - M3x10	11-110
0314 0060B	Philips Pan Head Screw - M4x6	9-115
0314 0060B	Philips Pan Head Screw - M4x6	15-115
0314 0060B	Philips Pan Head Screw - M4x6	7-115
0314 0060B	Philips Pan Head Screw - M4x6	3-115
0314 0060B	Philips Pan Head Screw - M4x6	3-117
0314 0060B	Philips Pan Head Screw - M4x6	13-115
0314 0060B	Philips Pan Head Screw - M4x6	11-115
0314 0060B	Philips Pan Head Screw - M4x6	5-115
0314 0120B	Philips Pan Head Screw - M4x12	9-105
0314 0160B	Philips Pan Head Screw - M4x16	15-107
0316 0140B	Screw - M6x14	13-108
0353 0040B	Screw - M3x4	7-101
0353 0040B	Screw - M3x4	5-101
0353 0040B	Screw - M3x4	15-101
0353 0060B	Philips Pan Head Screw - M3x6	9-130
0353 0060B	Philips Pan Head Screw - M3x6	7-102
0353 0060B	Philips Pan Head Screw - M3x6	3-109
0353 0080B	Screw - M3x8	15-135
0353 0080B	Screw - M3x8	7-135
0354 0060B	Screw - M4x6	13-131
0354 0060B	Screw - M4x6	3-103
0354 0060B	Screw - M4x6	3-128
0354 0060B	Screw - M4x6	7-131
0354 0060B	Screw - M4x6	5-103
0354 0080B	Screw - M4x8	15-104
0354 0080B	Screw - M4x8	13-104
0451 3008B	Tapping Screw - M3x8	7-112
0451 3008B	Tapping Screw - M3x8	9-112
0451 4008B	Philips Tapping Screw - M4x8	9-116
0451 4008B	Philips Tapping Screw - M4x8	5-116
0451 4008B	Philips Tapping Screw - M4x8	13-132

Part No.	Description	Page and Index No
0451 4008B	Philips Tapping Screw - M4x8	15-116
0451 4008B	Philips Tapping Screw - M4x8	3-116
0451 4008B	Philips Tapping Screw - M4x8	7-132
0451 4010B	Tapping Screw - 4x10	3-119
0451 4010B	Tapping Screw - 4x10	13-119
0451 4010B	Tapping Screw - 4x10	11-118
0451 4010B	Tapping Screw - 4x10	11-119
0451 4010B	Tapping Screw - 4x10	13-118
0451 4014B	Tapping Screw - M4x14	3-106
0453 3006B	Tapping Screw - M3x6	13-113
0453 3006B	Tapping Screw - M3x6	15-111
0453 3006B	Tapping Screw - M3x6	9-111
0453 3006B	Tapping Screw - M3x6	5-111
0453 3006B	Tapping Screw - M3x6	11-113
0453 3008B	Bind Tapping Screw - M3x8	3-113
0700 0040B	Flat Washer - M4 100 Pcs/Set	7-134
0701 0040B	Flat Washer - M4	7-120
0720 0030B	Retainig Ring - M3	15-124
0720 0030B	Retainig Ring - M3	3-124
0720 0050B	Retaining Ring - M5	7-133
0720 0050B	Retaining Ring - M5	11-133
0720 0050B	Retaining Ring - M5	5-113
0720 0050B	Retaining Ring - M5	9-133
0720 0050B	Retaining Ring - M5	15-133
0720 0060B	Retaining Ring - M6	11-126
0720 0060B	Retaining Ring - M6	15-126
0720 0060B	Retaining Ring - M6	15-127
0720 0060B	Retaining Ring - M6	5-126