

Cassette Tray
Machine Code: D395
Field Service Manual

August 2008
Subject to change

TABLE OF CONTENTS

1. Replacement and Adjustment

Common Procedures.....	3
Cassette Unit.....	3
Paper Feed Unit.....	6
Motors.....	7
Cassette Feed Motor.....	7
Tray Lift Motors.....	8
Clutches.....	9
Paper Transport Clutch.....	9
Paper Feed Clutch.....	10
Sensors.....	11
Paper End Sensor, Feed Sensor.....	11
Vertical Feed Sensor, Tray Lift Sensor.....	11
Paper Size Sensors.....	14
Rollers.....	17
Pickup, Feed, Reverse Rollers.....	17
Board.....	18
Cassette Control Board.....	18

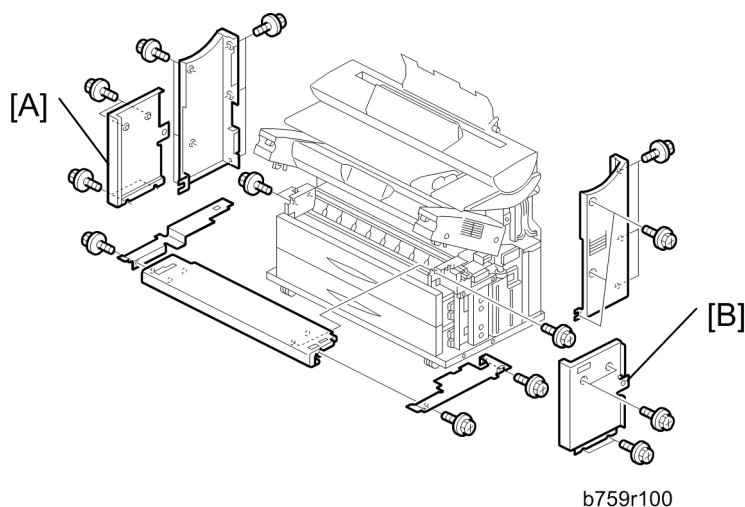


1. Replacement and Adjustment

Common Procedures

1

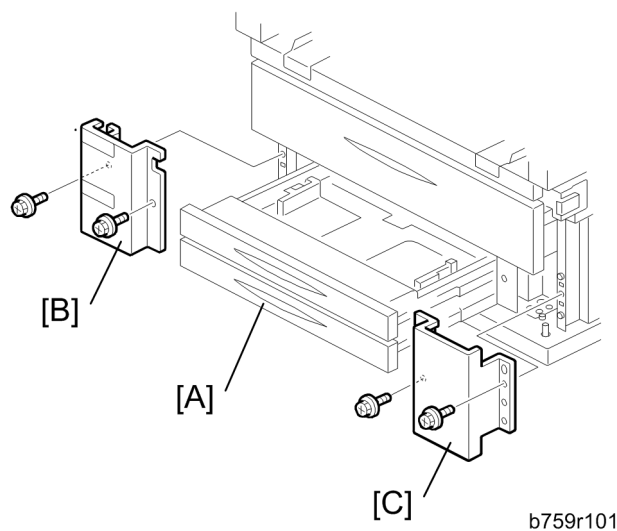
Cassette Unit



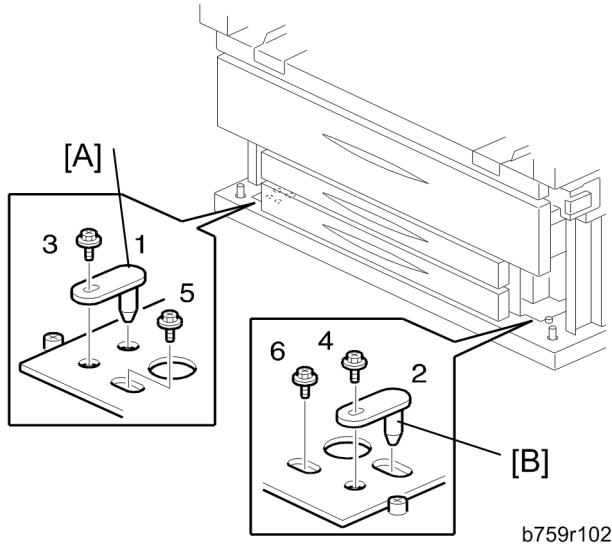
1. Left front cover [A] (⌀ x5)
2. Right front cover [B] (⌀ x5)

↓ Note

- Do not remove any other covers shown in this illustration.



3. Cassettes. Pull out partially [A].
4. Left cover plate [B] (⚙️ x2)
5. Right cover plate [C] (⚙️ x2)



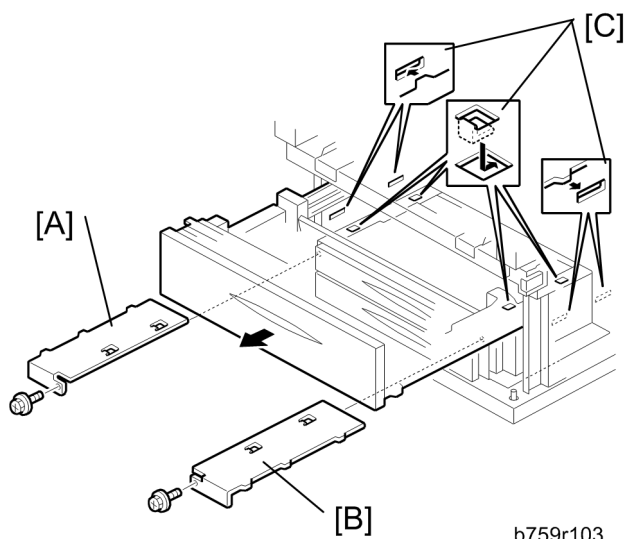
6. Push the cassettes into the machine.
7. Left lock pin [A] (⚙️ x2)
8. Right lock pin [B] (⚙️ x2)

Note

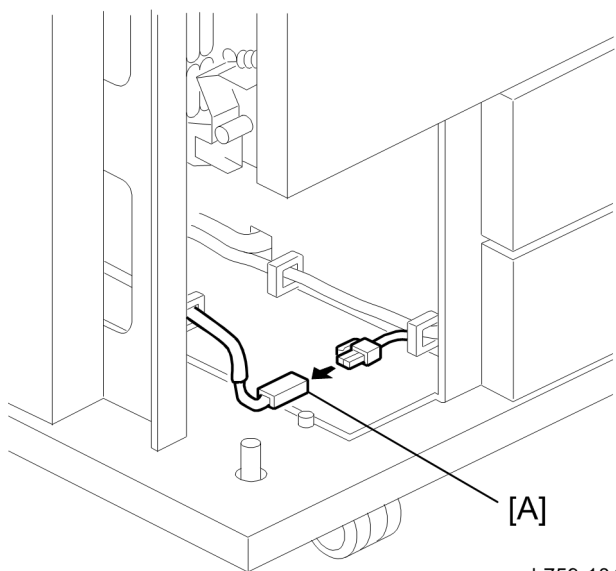
- Ignore the numbers in the diagram. You can remove the screws in any order.

Reinstallation

- Reattach the lock pins in the order indicated by the numbers in the diagram.

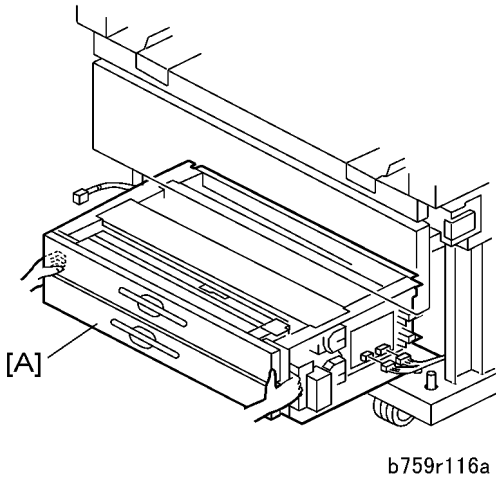


9. Left cover panel [A] (🔩 x1)
10. Right cover panel [B] (🔩 x1)
11. Disengage the tabs as shown to remove the left and right cover panels [C].



12. Left connector [A] (🔌 x1)

1

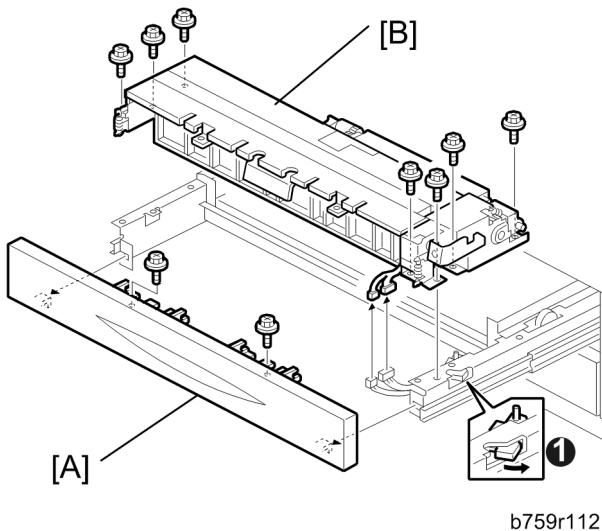


13. Cassette unit [A] Pull the cassette unit partially out of the machine until you can see the cassette tray control board.

Note

- It is not necessary to remove the cassette unit from the machine.

Paper Feed Unit



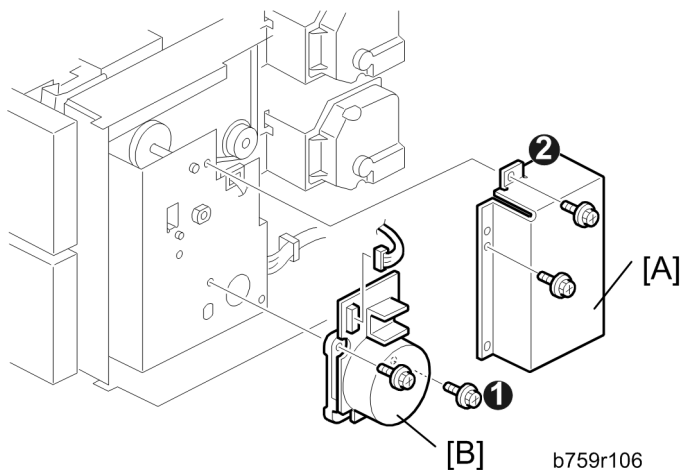
- Pull out the cassette.
1. Cassette drawer cover [A] (🔩 x2)
 2. Paper feed unit [B] (🔩 x7 – Blue, 🛠️ x2)

Before you lift the paper feed unit, make sure the release tab ① is out in the direction of the arrow.

Motors

Cassette Feed Motor

1



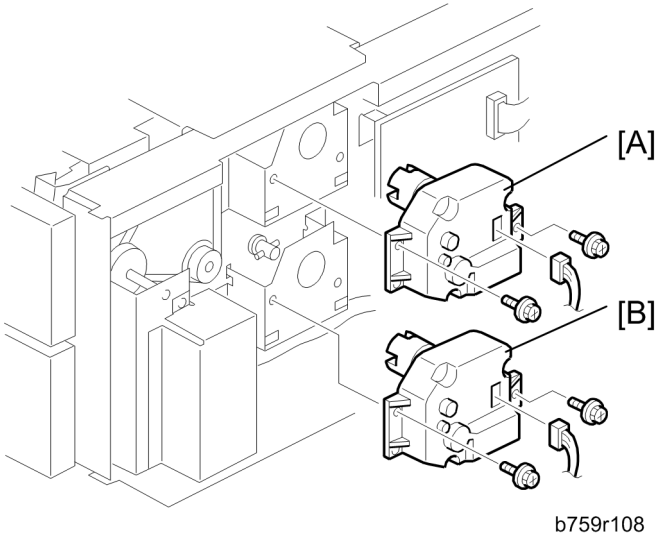
- Remove the covers, panels, and lock pins, and pull the cassette unit partially out of the machine.

1. Motor cover [A] (⌘ x2)
2. Cassette feed motor [B] (⌘ x2, ⌘ x1, ⌘ x2)

Reinstallation

- Use long screws 1 (M3 x 10) to reattach the motor bracket.
- When you reinstall the cover, attach the top screw 2 first.

Tray Lift Motors



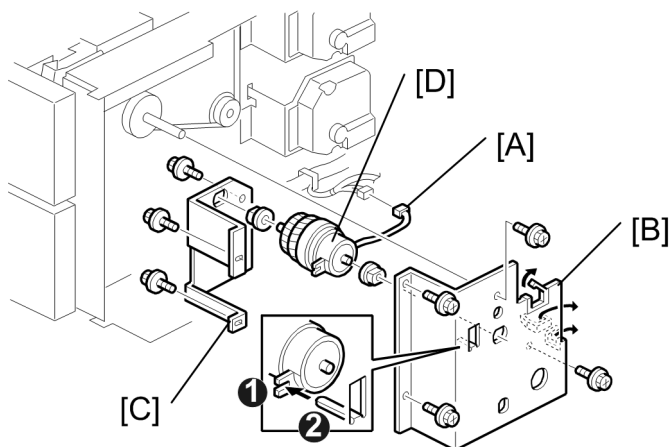
- Remove the covers, panels, and lock pins, and pull the cassette unit partially out of the machine.

1. Upper tray lift motor [A] (⚙ x2, 🔒 x1)
2. Lower tray lift motor [B] (⚙ x2, 🔒 x1)

Clutches

Paper Transport Clutch

1



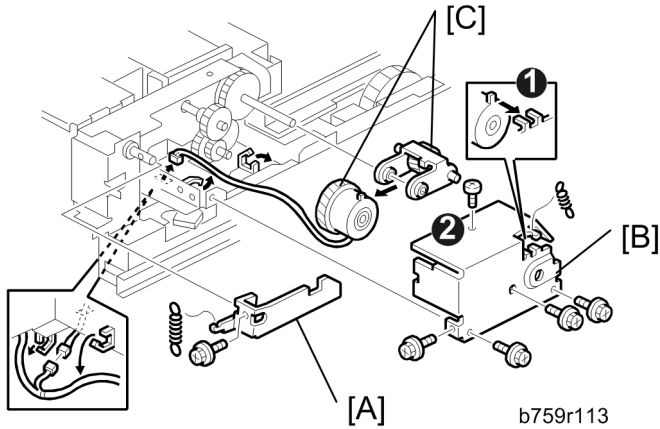
b759r107





- Remove the covers, panels, and lock pins, and pull the cassette unit partially out of the machine.
1. Clutch connector [A] (⌀ x1, ⌀ x3)
 2. Paper feed clutch cover [B] (⌀ x4 – Blue)
 3. Paper feed clutch bracket [C] (⌀ x3)
 4. Paper feed clutch [D] (Bushings x2)

Reinstallation

- Make sure that the notch ① is correctly engaged with the arm ②.

Paper Feed Clutch



- Remove the paper feed unit
- 1. Release lever [A] (Spring x1,  x1)
- 2. Clutch cover [B] (Spring x1,  x5)
- 3. Paper feed clutch and support bracket [C] ( x1,  x3)

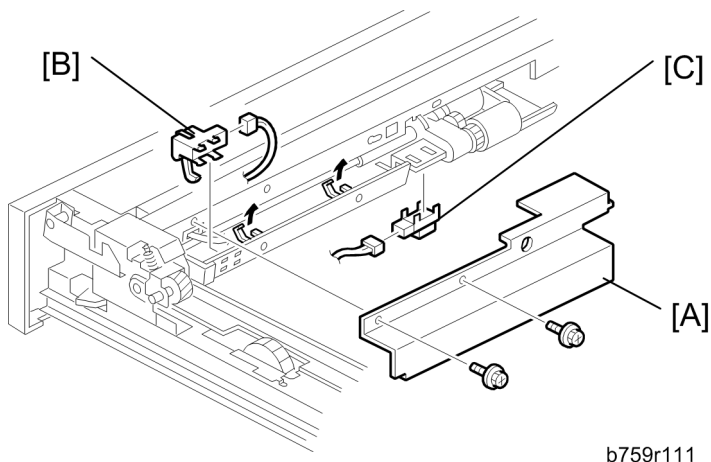
Reinstallation

- The clutch tab must be vertical as shown to engage the notch of the cover ①.
- Reattach the flat-head screw on top of the cover ②.

Sensors

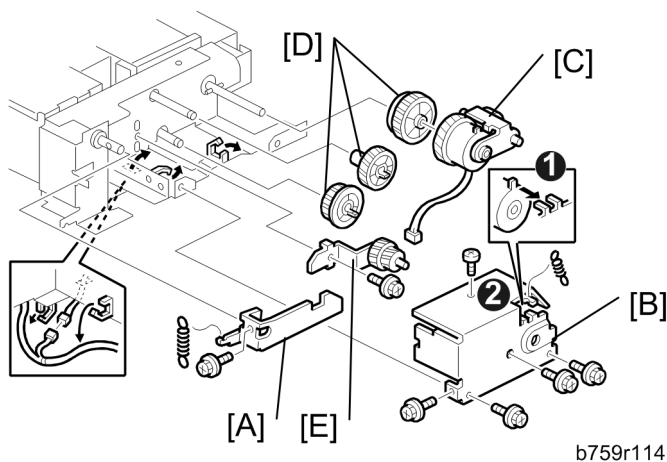
Paper End Sensor, Feed Sensor

1






- Pull out the cassette.
1. Cover [A] (🔩 x2)
 2. Paper near end sensor [B] (🔩 x1)
 3. Paper end sensor [C] (🔩 x1)

Vertical Feed Sensor, Tray Lift Sensor

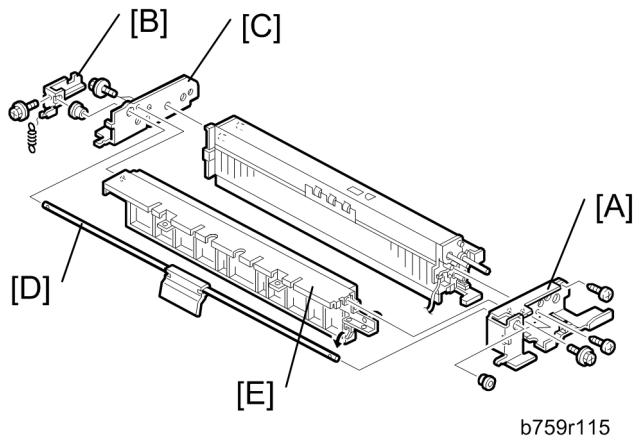




- Remove the paper feed unit.
1. Release lever [A] (Spring x1, 🔩 x1)

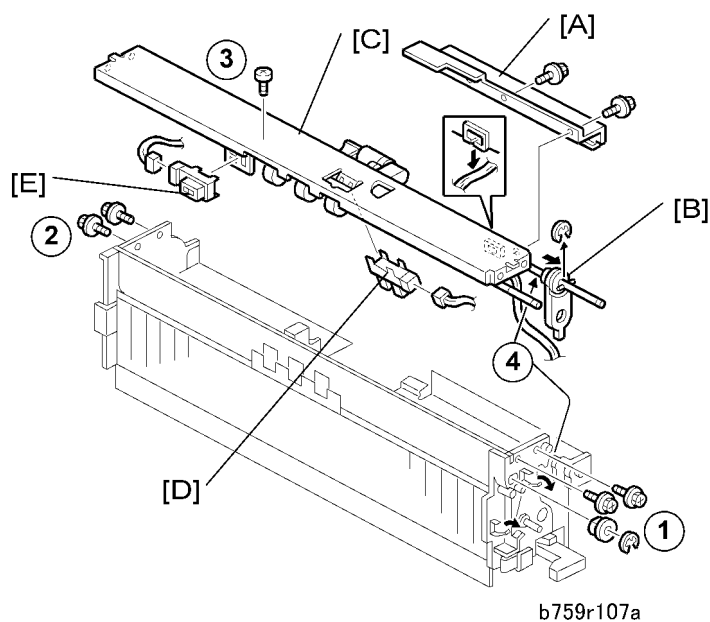
2. Clutch cover [B] (Spring x1,  x5)
3. Paper feed clutch and support bracket [C] ( x1,  x3)
4. Gears [D]
5. Gear mount [E]

Reinstallation

- The clutch tab must be vertical as shown to engage the notch of the cover ①.
- Reattach the flat-head screw on top of the cover ②.



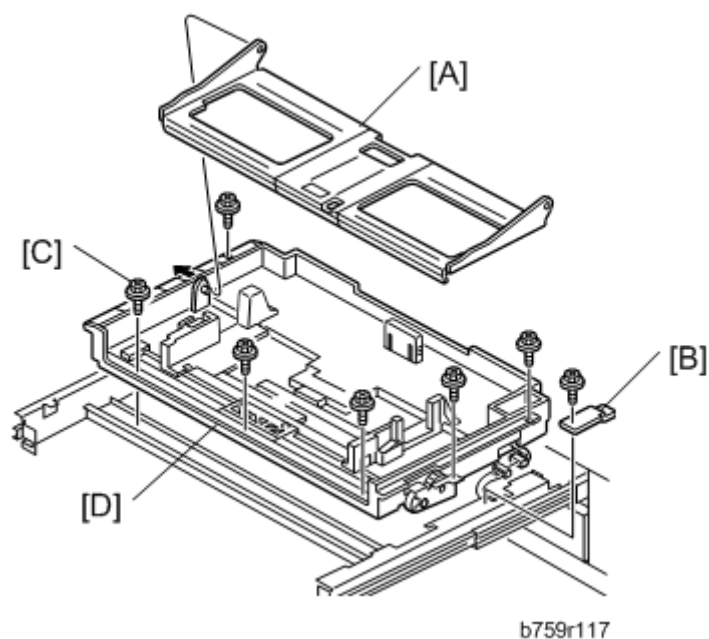
6. Right bracket [A] ( x3, Bushing x1)
7. Cassette release lever [B] (Spring x1,  x1, Bushing x1)
8. Left bracket [C]
9. Bottom plate lift arm [D]
10. Vertical feed assembly [E]



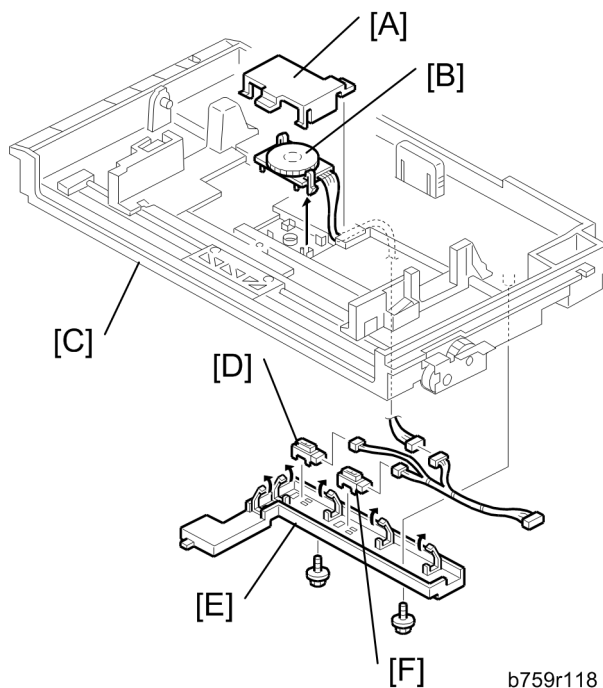
11. Bracket [A] (⚙ x2, 📐 x1)
12. Bracket [B] (⌚ x1)
13. Feed roller [C] assembly
 - ① Right side (⌚ x1, Bushing x1, ⚙ x2)
 - ② Left side (⚙ x2)
 - ③ Top (⚙ x1)
 - ④ Below (📐 x1, 📐 x1)
14. Tray lift sensor [D] (📐 x1)
15. Paper feed sensor [E] (📐 x1)

Paper Size Sensors


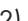


1

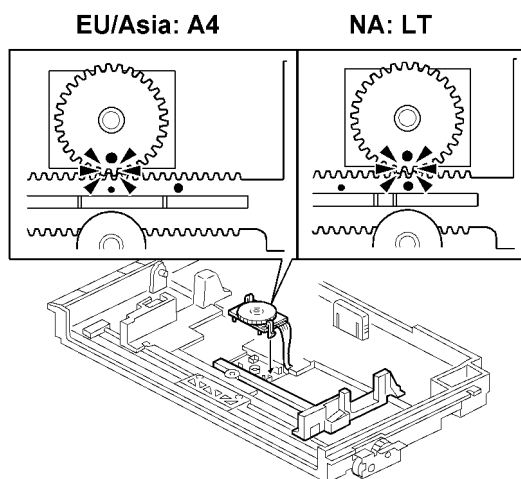


1. Bottom plate [A] Lift and remove.
2. Connector plate [B] (🔩 x1 – Blue)
3. Cassette plate screws [C] (🔩 x6)
4. Remove the cassette plate [D] (🔩 x1)



b759r118

5. Switch cover [A] (Tabs x2,  x1)
6. Paper size sensor 1 [B] (width) (Tabs x2)
7. Turn over the cassette plate [C]
8. Sensor cover [D] ( x2)
9. Paper size sensor 2 [E] ( x1)
10. Paper size sensor 3 [F] ( x1)



b795r109a

Reinstallation

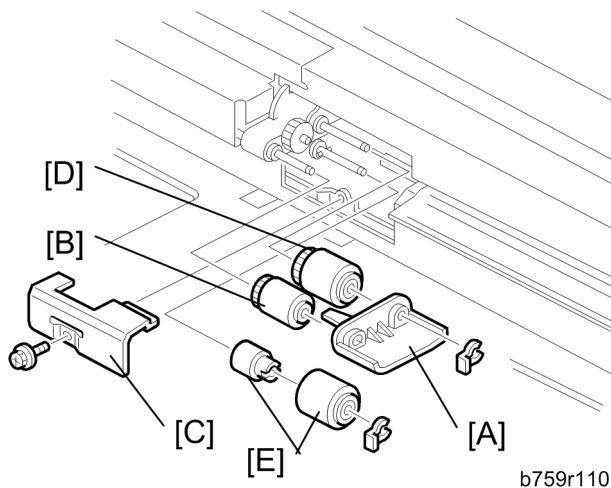
When you reattach paper size sensor 1 (width):

1. Set the side fences to A4 or LT.
2. Align the dot on the rotary wheel with the small dot on the rack for EU/ASIA (A4)
-or-
Align the dot on the rotary wheel with the large dot on the rack for NA: LT.

Rollers

Pickup, Feed, Reverse Rollers

1

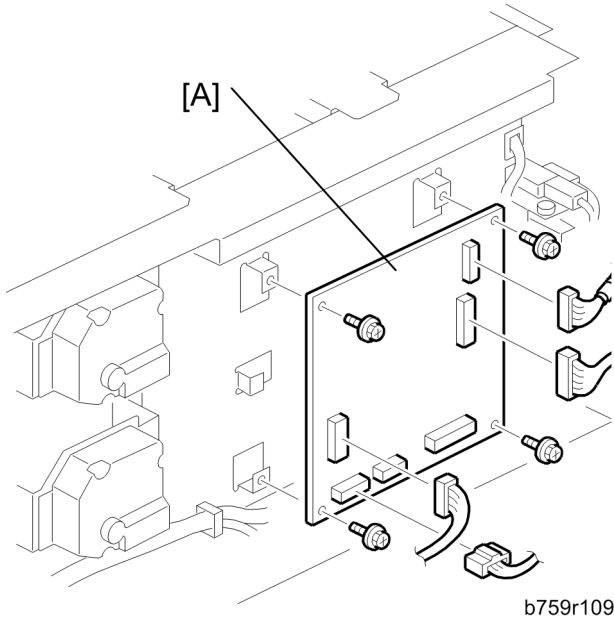


- Pull out the cassette.
1. Upper paper guide [A] (🔧 x1)
 2. Pickup roller [B]
 3. Lower paper guide [C] (🔧 x1)
 4. Feed roller [D]
 5. Reverse roller [E], torque limiter (🔧 x1)

Board

1

Cassette Control Board



- Remove the covers, panels, and lock pins, and pull the cassette unit partially out of the machine.

1. Cassette tray control board [A] (⌘ x6, ⌘ x4)

MEMO

MEMO