

Model: Paper Cassette Type240 for N-C1		Date: 20-Mar-07	No.: MB643001
Modified Article: Decal, Paper Cassette		Prepared by: F.Noguchi	
From: 2nd Tech. Support Sec. Service Support Dept.			
Reason for Modification:	<input type="checkbox"/> Parts catalog correction <input type="checkbox"/> Vendor change <input type="checkbox"/> Other <input type="checkbox"/> To facilitate assembly <input checked="" type="checkbox"/> To improve reliability <input type="checkbox"/> To meet standards <input checked="" type="checkbox"/> Part standardization <input type="checkbox"/> Product Safety ()		

1.

Old part number	New part number	Description	Q'ty	Int	Page	Index	Note
B6432775	B6432777	Decal: Operate: Cassette	1 - 1	O/O	3	2	

Change: The illustration on the decal was changed.

Reason: Parts standardization

2.

Old part number	New part number	Description	Q'ty	Int	Page	Index	Note
B8532510	B8532515	Cassette Unit (RoHs)	1 - 1	X/O	3	1	
	B6432665	Adjusting Screw: M3X12	0 - 2		3	18	*1
	B6432660	Side Fence: Trailing Edge: L	0 - 1		3	19	*1
	B6432661	Side Fence: Trailing Edge: R	0 - 1		3	20	*1
	B6432662	Base: Side Fence: Left	0 - 1		3	21	*1
	B6432663	Base: Side Fence: Right	0 - 1		3	22	*1
	B6432664	Bracket: Fix: Side Fence	0 - 2		3	23	*1
	B6432776	Decal: Operate: Cassette: 2	0 - 1		3	24	*1

Change: Side fences for the trailing edge were added.

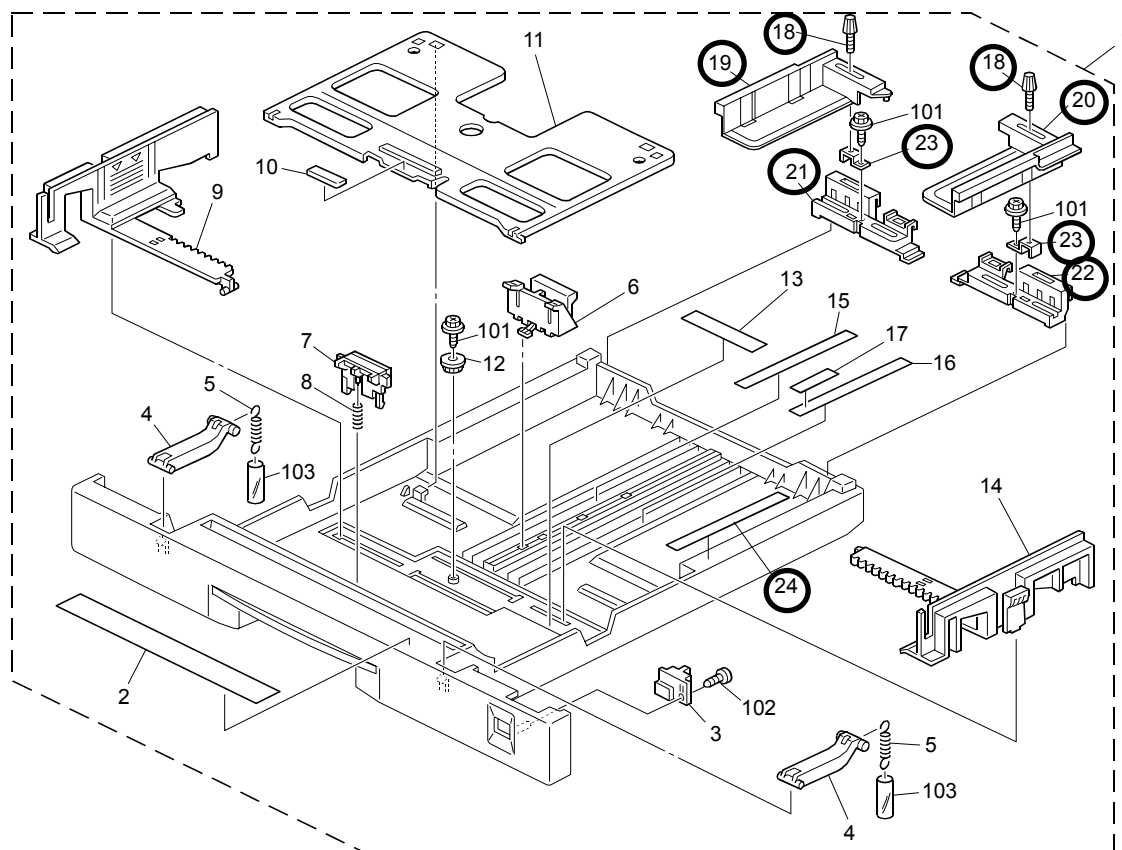
Reason: To minimize paper feed skew on A3, 11" x 17", and 8½" x14" paper.

Important: The new parts cannot be installed on the old paper cassette unit. If paper feed skew occurs with the old paper cassette unit, replace the paper cassette unit with the new one.

Model: Paper Cassette Type240 for N-C1

Date: 20-Mar-07

No.: MB643001



MODEL NAME	V/Hz	DESTINATION	CODE	SERIAL NO.
Paper cassette Type 240	120/60 220-240/50, 60	USA, Canada, S. America Europe, Asia, Oceania, etc	B643-17	Service part only
Paper cassette Type 240	120/60 220-240/50, 60	USA, Canada, S. America Europe, Asia, Oceania, etc	B853-17	L3361200001

Model: Paper Cassette Type240 for N-C1/C2		Date: 27-Nov-08	No.: MB643002
Modified Article: Connector - 7P, and 9P		Prepared by: F.Noguchi	
From: 2nd Tech. Support Sec. Service Support Dept.			
Reason for Modification:	<input checked="" type="checkbox"/> Parts catalog correction <input type="checkbox"/> Vendor change <input type="checkbox"/> Other <input type="checkbox"/> To facilitate assembly <input type="checkbox"/> To improve reliability <input type="checkbox"/> To meet standards <input type="checkbox"/> Part standardization <input type="checkbox"/> Product Safety ()		

New part number	Description	Q'ty	Page	Index	Note
11026250	Connector – 7P	0 - n	7	108	*
11026252	Connector – 9P	0 - n	7	109	*

Change: The parts in the table were added.

Reason: To meet requests from the field.

Note: These are intermediate connectors for the harness – dc cassette (P/N: B8535770).



Part Change Information List

Date: April 30, 2009

Model	Code	PCIL Number	PCIL Correction	Old part number	New part number	Description	Old Q'ty	New Q'ty	Int	3DPC	Page	Index	Set	Set Int	RTB	Note	Ref Number
Neptune-C1 Paper Cassette Type240	B643	200904		B8532515	D3362511	CASSETTE:UNIT	1	1	X/O		3	1					V0900061



Part Change Information List

Date: October 29, 2010

Model	Code	PCIL Nr.	PCIL Correction	Old part number	New part number	Description	Old Q'ty	New Q'ty	Int	3DPC	Page	Index	Set	Set Int	RTB	Note	Ref. Nr.	ECN Nr.
N-C1 Paper Cassette Type 240	B643	200906	Corrected		D3362762	SEAL:SIDE FENCE	0	2			3	25			RB125017	Index was corrected.	V0900840	



Part Change Information List

Date: September 30, 2010

Model	Code	PCIL Nr.	PCIL Correction	Old part number	New part number	Description	Old Q'ty	New Q'ty	Int	3DPC	Page	Index	Set	Set Int	RTB	Note	Ref. Nr.	ECN Nr.
N-C1 Paper Cassette Type 240	B853	201009		D3362511	D3362512	CASSETTE:ASS'Y	1	1	X/O		3	1						
N-C1 Paper Cassette Type 240	B853	201009		D3362762	D3362763	SEAL:SIDE FENCE:FRONT	2	2	X/O		3	25					V1002008	10080176
N-C1 Paper Cassette Type 240	B853	201009			D3362765	PAD:SIDE FENCE:REAR	0	2			3	26			Y		V1002008	10080176
N-C1 Paper Cassette Type 240	B853	201009		G8003017	D3363017	PLAIN SHAFT BEARING:PAPER FEED:LEFT	1	1	X/O		5	2					V1002008	10080176



Part Change Information List

Date: April 26, 2013

Model	Code	PCIL Number	PCIL Correction	Old part number	New part number	Description	Old Q'ty	New Q'ty	Int	3DPC	Page	Index	Set	Int	RTB	Note	Ref Number	ECN Number
Paper Cassette Type 240	B643	201303		11060883		TUBE:AWG2-B:300V	1	0			3	103			RB643001		V1300986	