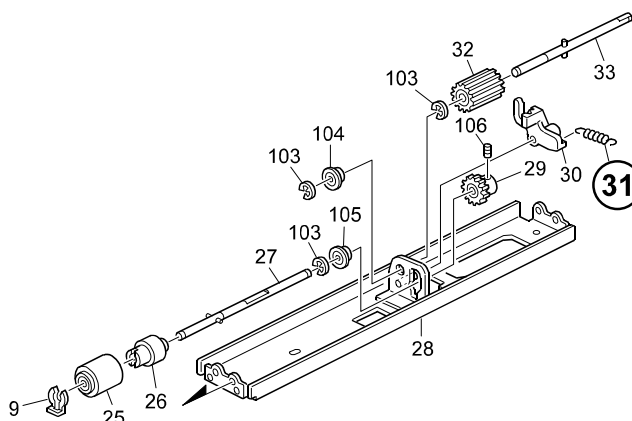


Model: Multi Bypass Tray for Bellini-C2		Date: 19-May-03	No.: MB512001
Modified Article: Reverse Pressure Spring - 55GF		Prepared by: F.Noguchi	
From: 2nd Tech. Support Sec. Service Support Dept.			
Reason for Modification:	<input type="checkbox"/> Parts catalog correction <input type="checkbox"/> To facilitate assembly <input type="checkbox"/> Part standardization	<input type="checkbox"/> Vendor change <input checked="" type="checkbox"/> To improve reliability <input type="checkbox"/> Other	<input type="checkbox"/> To meet standards ()

The Reverse Pressure Spring has been changed as follows to improve paper feed performance.

- Pressure increased
- Diameter increased (0.45mm→ 0.5mm)
- Pre-attachment length increased (18.0mm→ 21.4mm).

Old part number	New part number	Description	Q'ty	Int	Page	Index	Note
AA060834	AA060941	Reverse Pressure Spring - 55GF	1 - 1	X/O	7	31	
		Spring: Pressure: Reverse					



RCL (Japan) Production (B512)

MODEL NAME	BRAND	DESTINATION	CODE	SERIAL NO.
Multi Bypass Tray Type 2105	Ricoh Savin Gestetner Nashuatec Rex Rotary Lanier	208-240/60 220-240/50,60	B512-17	J7330300001
Multi Bypass Tray Type 2105	Infotec	220-240/50,60	B512-26	6Q40330001



Part Change Information List

Date: November 2, 2015

Model	Code	PCIL Number	PCIL Correction	Old part number	New part number	Description	Old Q'ty	New Q'ty	Int	3DPC	Page	Index	Set	Set Int	RTB	Note	Ref Number	ECN Number
B-C2 Multi-bypass Tray	B512	201510		AF020489	D6130489	ROLLER:CONNECTING:DRIVEN	3	3	O/O	N	7 9	23 7					V1502524	