

Model: Multi Bypass Tray BY5010		Date: 22-Aug-13	No.: RD517001
Subject: New cable connector / Rework for installing Multi Bypass Tray on LCIT		Prepared by: J. Ohno	
From: 1st PP Tech Service Sec., PP Tech Service Dept.,			
Classification:	<input type="checkbox"/> Troubleshooting <input type="checkbox"/> Mechanical <input type="checkbox"/> Paper path <input type="checkbox"/> Product Safety	<input type="checkbox"/> Part information <input type="checkbox"/> Electrical <input type="checkbox"/> Transmit/receive <input type="checkbox"/> Other ()	<input checked="" type="checkbox"/> Action required <input type="checkbox"/> Service manual revision <input type="checkbox"/> Retrofit information <input type="checkbox"/> Tier 2

Change: Cable connector for connecting the Multi Bypass Tray BY5010 with LCIT

Reason: Vendor change

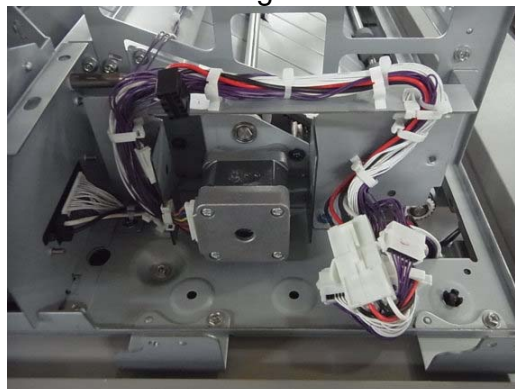
Action: Open the rear cover of the Multi Bypass Tray unit and confirm the connector type, New or Old. If installed with the Old type, replace the cables in the LCIT with the modified cables included as an accessory with the LCIT. This rework is required only for the LCIT models RT5070 and RT5080.



OLD cable routing / connectors



NEW cable routing / connectors



Following are the installation procedures according to the combination of the Multi Bypass Tray connector type and LCIT model.

- | | |
|---|--------|
| A) Multi Bypass Tray BY5010 (OLD connector) + LCIT RT5060 | Page 2 |
| B) Multi Bypass Tray BY5010 (OLD connector) + LCIT RT5070 | Page 2 |
| C) Multi Bypass Tray BY5010 (OLD connector) + LCIT RT5080 | Page 5 |
| D) Multi Bypass Tray BY5010 (NEW connector) + LCIT RT5060 | Page 7 |
| E) Multi Bypass Tray BY5010 (NEW connector) + LCIT RT5070/LCIT RT5080 | Page 8 |

Model: Multi Bypass Tray BY5010

Date: 22-Aug-13

No.: RD517001

A) Multi Bypass Tray BY5010 (OLD connector) + LCIT RT5060

There are no changes in the installation procedure. Rework is not needed.

B) Multi Bypass Tray BY5010 (OLD connector) + LCIT RT5070

1. Remove the rear cover of the LCIT RT5070. (screw x8)



2. Remove the top cover of the LCIT RT5070. (screw x10)



Front; screw x1



Top; screw x7



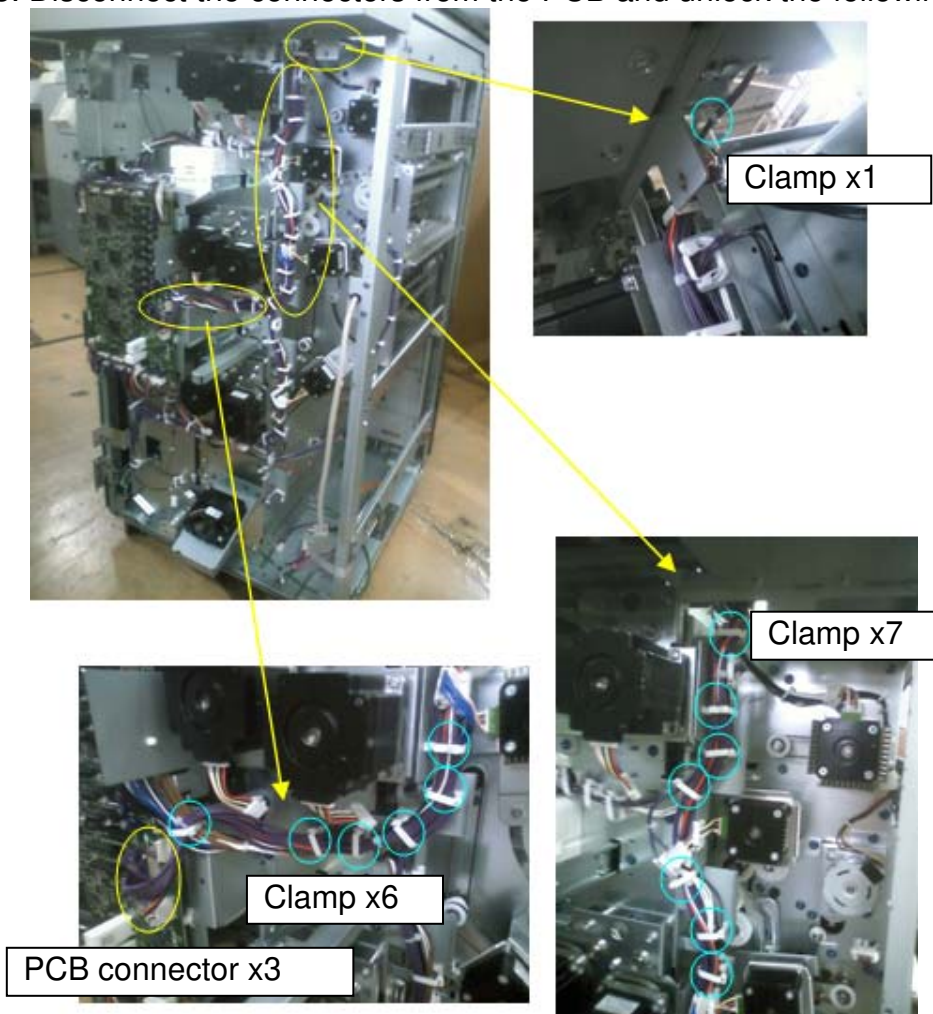
Rear; screw x2

Model: Multi Bypass Tray BY5010

Date: 22-Aug-13

No.: RD517001

3. Disconnect the connectors from the PCB and unlock the following cable clamps.



4. Remove the cables from the unit together with the bracket. (screw x1)

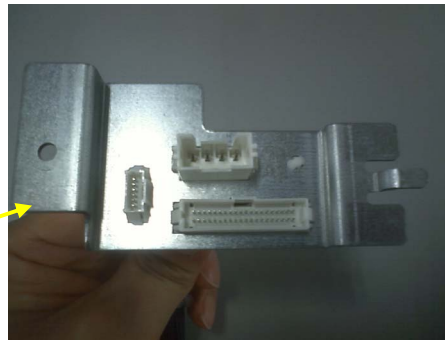


Model: Multi Bypass Tray BY5010	Date: 22-Aug-13	No.: RD517001
---------------------------------	-----------------	---------------

5. Replace the cables removed in step 4 with the modified cables included as accessories with the LCIT RT5070 and route the cables as routed originally.



Modified cables included as accessories with RT5070



NOTE: Work carefully to avoid damage to the cables.

6. Connect the 3 connectors to the PCB disconnected in step 3.
7. Install the upper and rear covers to complete the procedure.

Model: Multi Bypass Tray BY5010

Date: 22-Aug-13

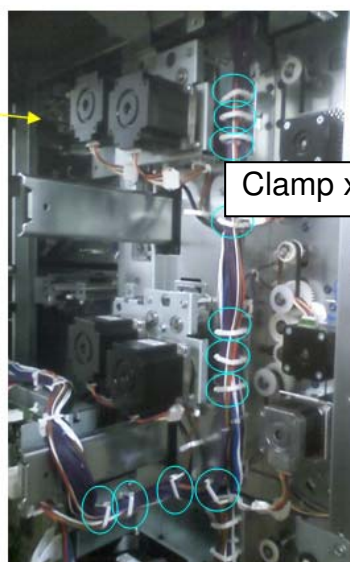
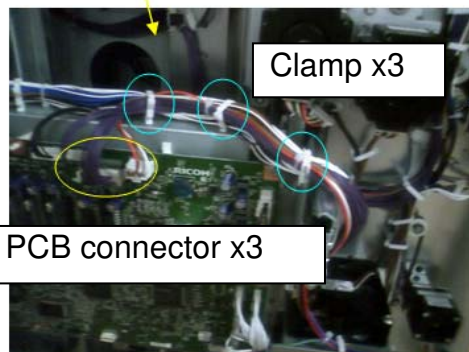
No.: RD517001

C) Multi Bypass Tray BY5010 (OLD connector) + LCIT RT5080

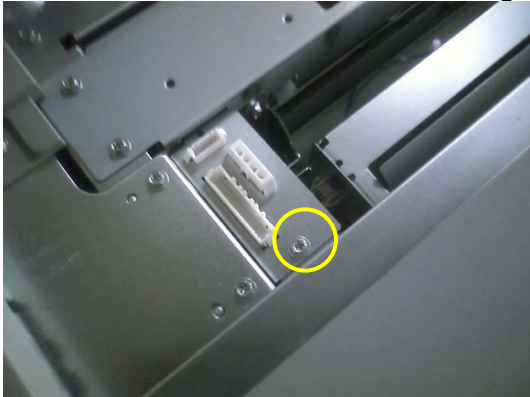
1. Remove the rear cover of the LCIT RT5080. (screw x7)



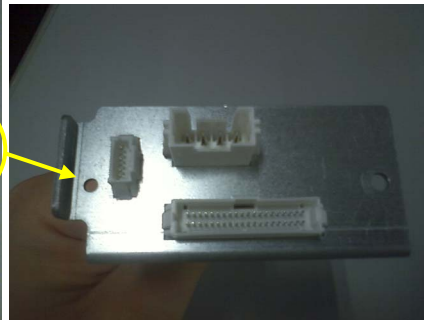
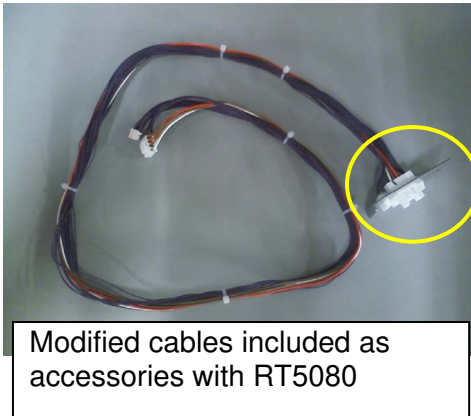
2. Disconnect the connectors from the PCB and unlock the following cable clamps.



3. Remove the cables from the unit together with the bracket. (screw x1)



4. Replace the cables removed in step 4 with the modified cables included as accessories with the LCIT RT5080 and route the cables as routed originally.

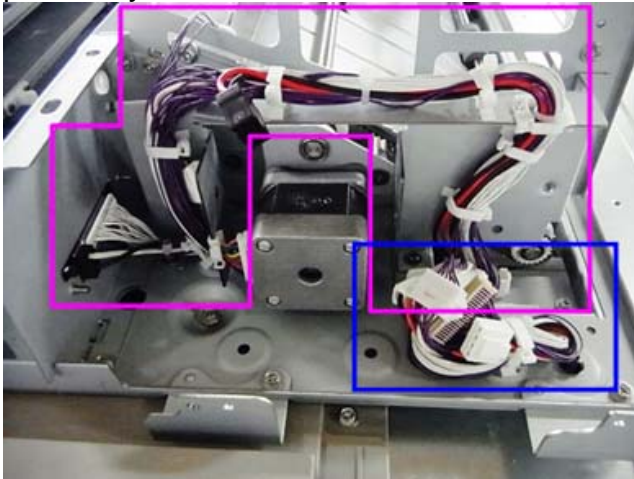


NOTE: Work carefully to avoid damage to the cables.

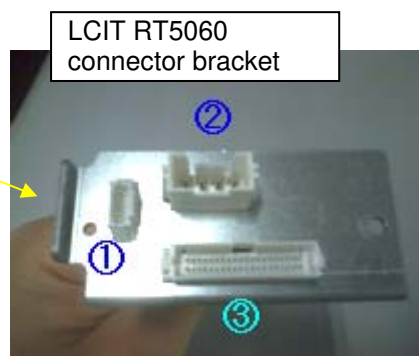
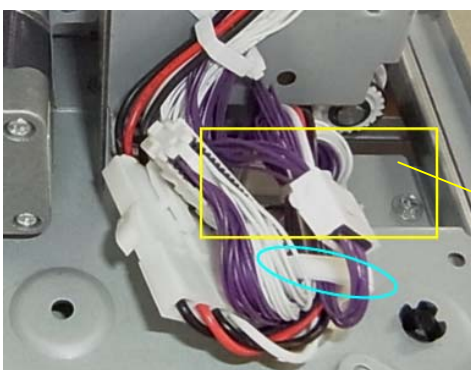
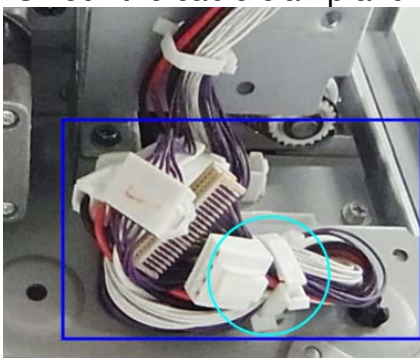
5. Connect the 3 connectors to the PCB disconnected in step 2.
6. Install the upper and rear covers to complete the procedure.

D) Multi Bypass Tray BY5010 (NEW connector) + LCIT RT5060

There are no changes in the procedure for installing the Multi Bypass Tray on the LCIT RT5060. The only difference is the NEW cable routing and connectors on the Multi Bypass Tray BY5010 as shown below.



1. Set the Multi Bypass Unit on top of the LCIT RT5060. (See the service manual for the procedure.)
2. Unlock the cable clamp and connect the 3 connectors to the connectors on the LCIT.



Tip: For easy connection, connect in the order 1, 2, and 3.

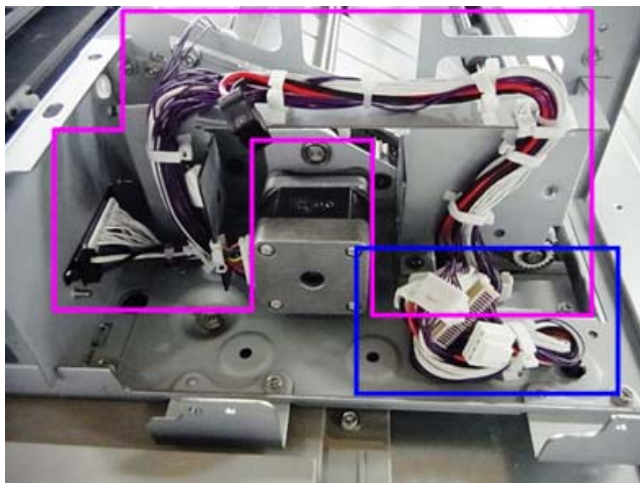
3. Lock the cable clamp to complete the procedure.

Model: Multi Bypass Tray BY5010

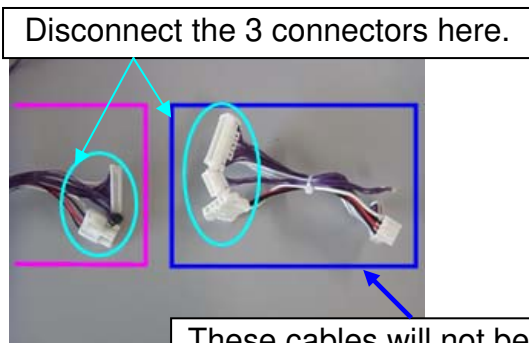
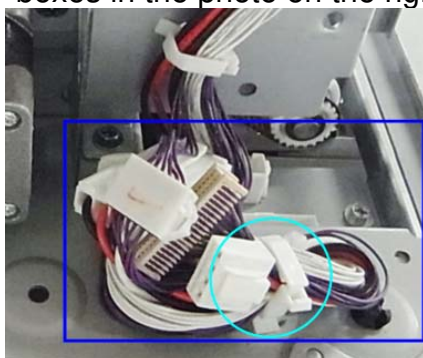
Date: 22-Aug-13

No.: RD517001

E) Multi Bypass Tray BY5010 (NEW connector) + LCIT RT5070/LCIT RT5080



1. Set the Multi Bypass Unit on top of the LCIT RT5070/RT5080. (See the service manual for the procedure.)
2. Unlock the cable clamp and disconnect the cables indicated with the pink and blue boxes in the photo on the right below.



3. Connect the 3 connectors to the connectors on the LCIT RT5070/RT5080.



LCIT RT5080 connector bracket



LCIT RT5070 connector bracket



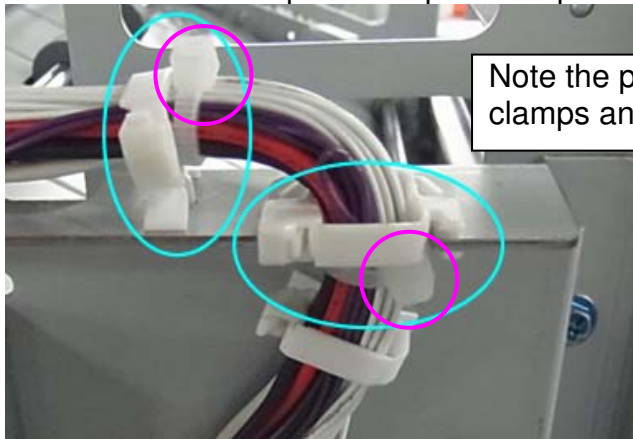
Tip: For easy connection, connect in the order 1, 2, and 3.

Model: Multi Bypass Tray BY5010

Date: 22-Aug-13

No.: RD517001

4. Lock the cable clamps to complete the procedure.



Note the positions of the
clamps and binders.

Reissued: 13-Jun-16

Model: Multi Bypass Tray BY5010	Date: 30-Mar-16	No.: RD517002a
---------------------------------	-----------------	----------------

RTB Reissue

The items in ***bold italics*** were added.

Subject: Modification of Multi-Bypass Tray BY5010		Prepared by: A. Tajima	
From: 1st Tech Service Sect., PP Tech Service Dept.			
Classification:	<input type="checkbox"/> Troubleshooting <input type="checkbox"/> Mechanical <input type="checkbox"/> Paper path <input type="checkbox"/> Product Safety	<input checked="" type="checkbox"/> Part information <input type="checkbox"/> Electrical <input type="checkbox"/> Transmit/receive <input type="checkbox"/> Other ()	<input type="checkbox"/> Action required <input type="checkbox"/> Service manual revision <input type="checkbox"/> Retrofit information <input checked="" type="checkbox"/> Tier 2 <input type="checkbox"/> Tier 0.5

This bulletin provides information on the modification of the Multi Bypass Tray BY5010.

The tray was modified in order to reduce the installation time when installed on the Vacuum Feed LCIT.

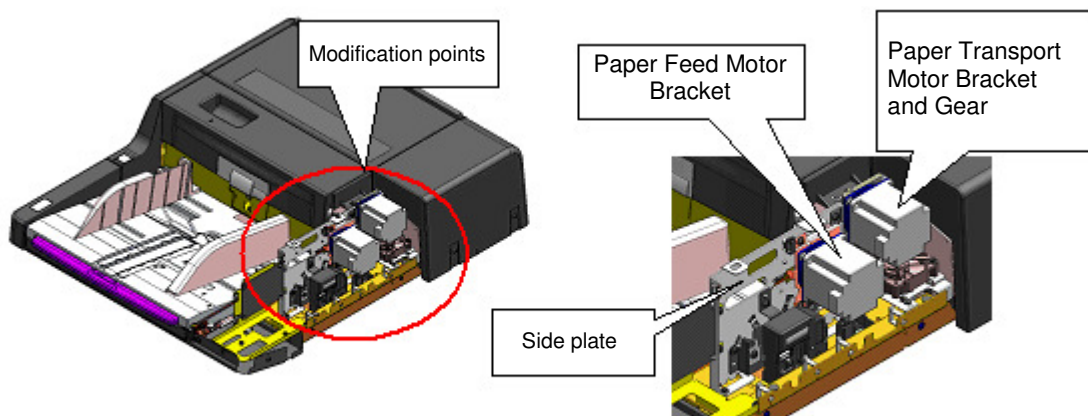
A new pulley was added to “Multi Bypass Attachment Kit for Vacuum Feed LCIT Type S3” in line with the modifications applied to the tray.

The new tray and kit are available from May 2016.

Modification in the field is not necessary. The procedure for installing the BY5010 on the Vacuum Feed LCIT differs from that in the FSM for BY5010 for certain S/N.

Modification points

- The paper feed motor bracket has an additional screw hole to enable removal of the feed motor bracket independently.
- The paper transport motor bracket was modified for easier attachment to the side plate.
- The side plate was modified to prevent the spring from easily coming off.
- The coupled gear-pulley was separated into two parts – gear and pulley.



Cut-in S/N

Multi Bypass Trays with the following serial numbers have the modification:

110912~

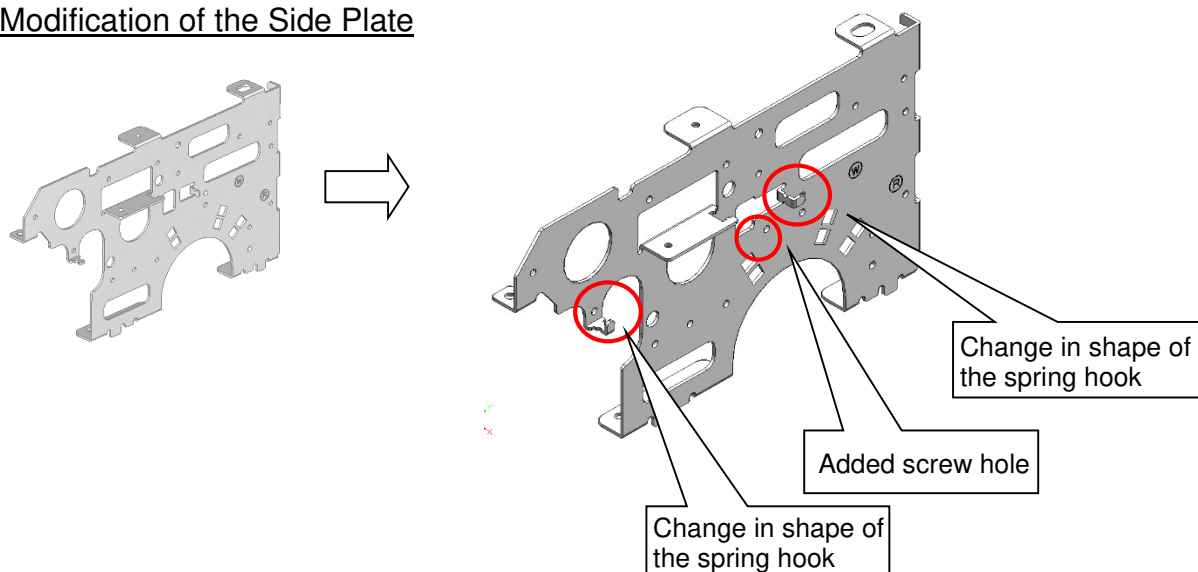
Reissued: 13-Jun-16

Model: Multi Bypass Tray BY5010

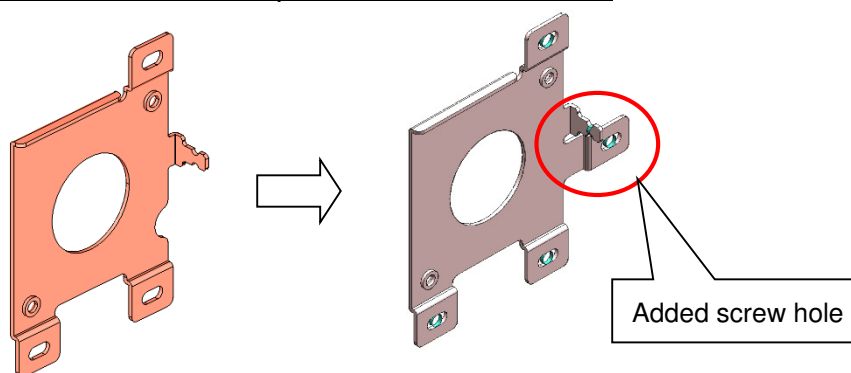
Date: 30-Mar-16

No.: RD517002a

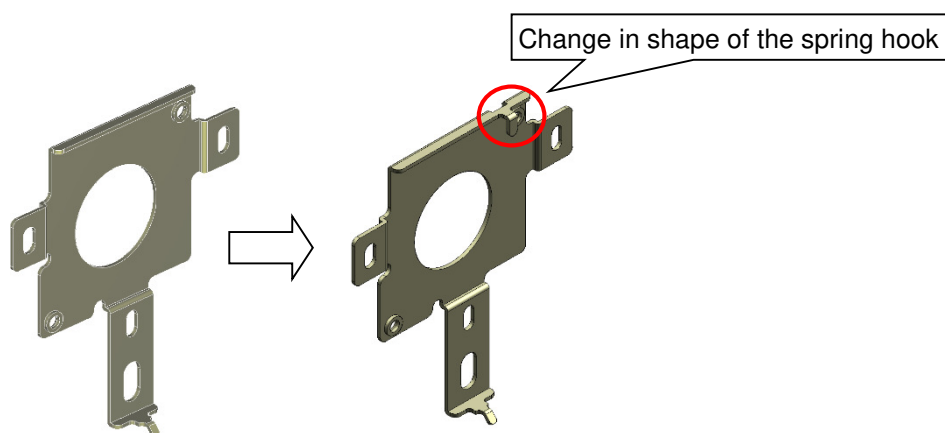
Modification of the Side Plate



Modification of the Paper Feed Motor Bracket



Modification of the Paper Transport Motor Bracket



Reissued: 13-Jun-16

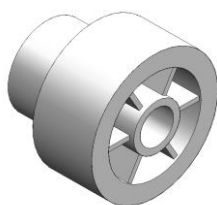
Model: Multi Bypass Tray BY5010

Date: 30-Mar-16

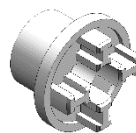
No.: RD517002a

Modification of the Gear-pulley Z28/30T

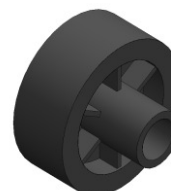
Gear-pulley was separated into two parts – pulley and gear



Gear-pulley Z28/30T



Pulley Z30 (white)



Gear Z28 (black)

Modification of the “Multi Bypass Attachment Kit for Vacuum Feed LCIT Type S3”

A pulley (black) was added to the kit. This pulley is used in Step 9 of the procedure in this bulletin.



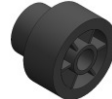
Pulley: Z25

Difference in installation procedure depending on the tray and kit combination

The installation procedure may differ from that in the FSM depending on the combination of the tray and attachment kit. See the table on the next page for details.

Reissued: 13-Jun-16

Model: Multi Bypass Tray BY5010	Date: 30-Mar-16	No.: RD517002a
---------------------------------	-----------------	----------------

Combination	Procedure	Remark
OLD multi bypass tray & OLD attachment kit	According to the FSM. Replace the coupled gear-pulley with the coupled gear-pulley included in the kit.	
OLD multi bypass tray & NEW attachment kit	According to the FSM. Replace the coupled gear-pulley with the coupled gear-pulley included in the kit.	Pulley Z25 contained in the kit will not be used. 
NEW multi bypass tray & OLD attachment kit	According to the FSM. Replace the gear and pulley with the coupled gear-pulley included in the kit.	Pulley Z25 contained in the kit will not be used. 
NEW multi bypass tray & NEW attachment kit	According to this bulletin. Replace the pulley with the pulley included in the kit.	Gear Z28/25T contained in the kit will not be used. 

Reissued: 13-Jun-16

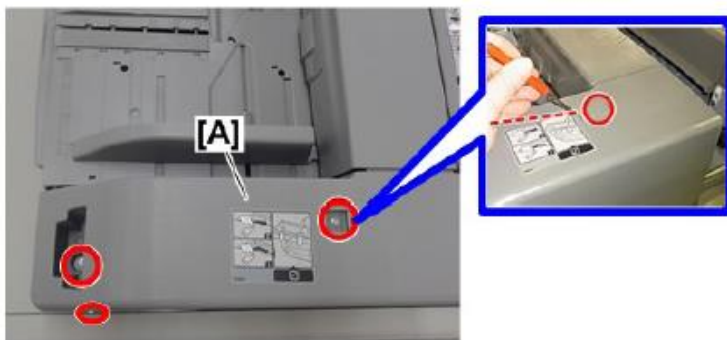
Model: Multi Bypass Tray BY5010

Date: 30-Mar-16

No.: RD517002a

Procedure for installing the New multi bypass tray using the New attachment kit

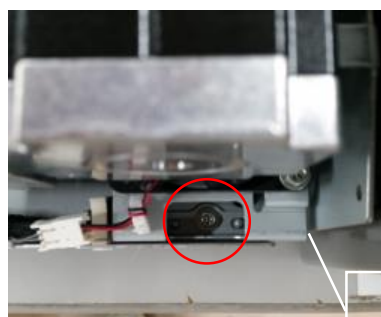
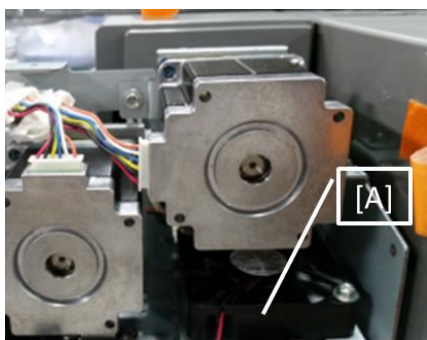
1. Remove the rear cover [A]. (cap x1, screw x3)



2. Disconnect the connectors from the feed motor and transport motor. (connector x2)



3. Remove the bracket **and** the motor fan [A].



View from above



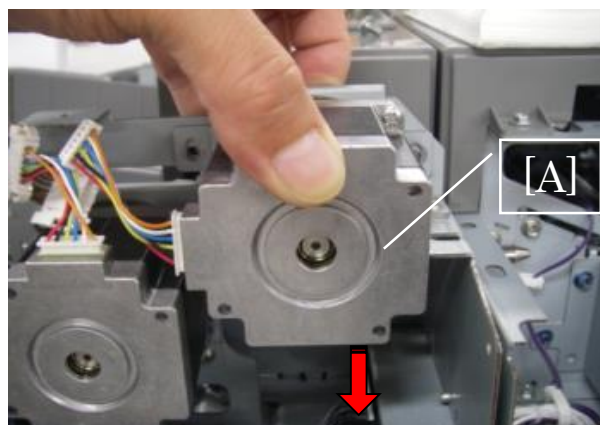
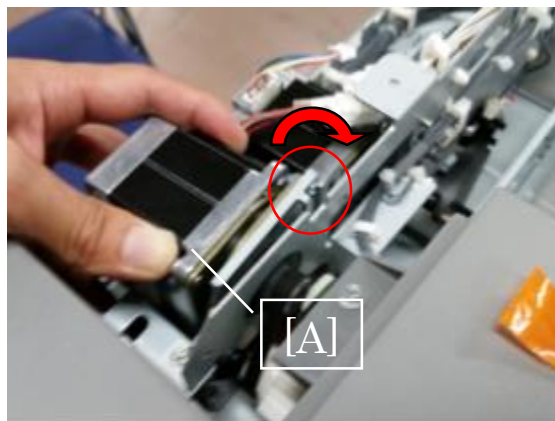
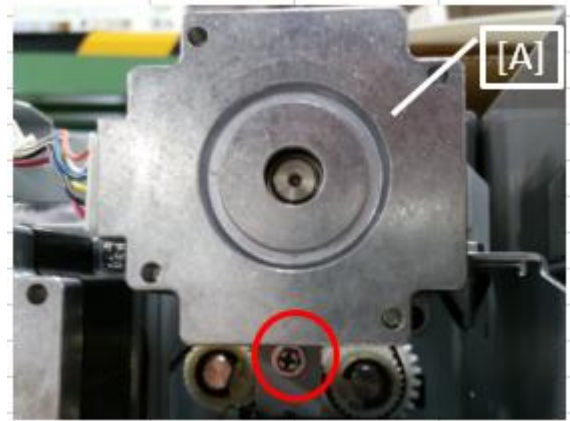
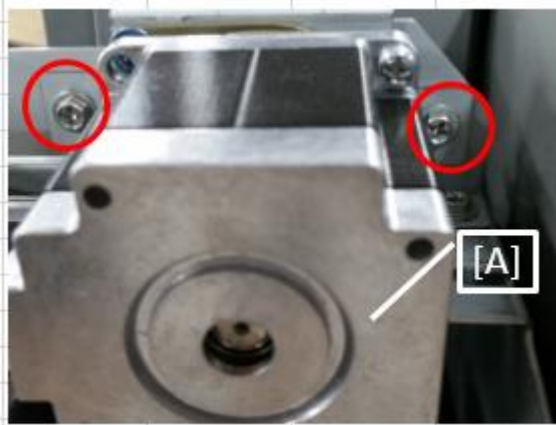
Reissued: 13-Jun-16

Model: Multi Bypass Tray BY5010

Date: 30-Mar-16

No.: RD517002a

4. Remove the three screws from the bracket [A] attached **to** the transport motor, and turn the bracket counterclockwise (viewed from the **rear**) to release it from the hook. Then remove the bracket **and motor** by sliding **the assembly** down, so that it is easily released from the timing belt. (screw x3)



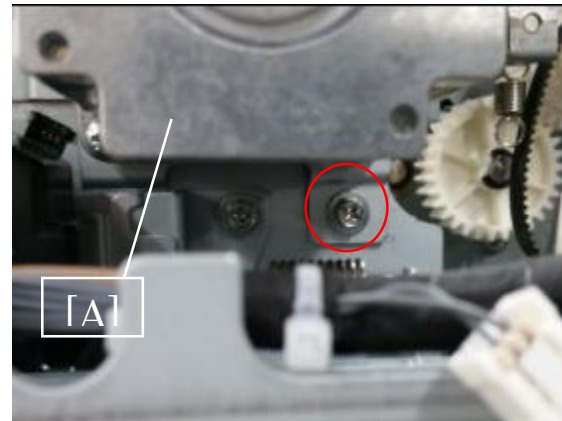
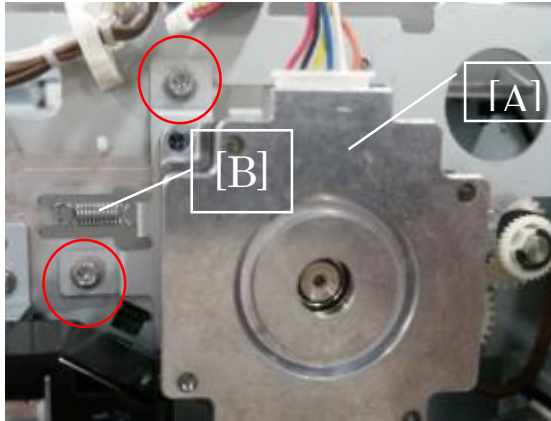
Reissued: 13-Jun-16

Model: Multi Bypass Tray BY5010

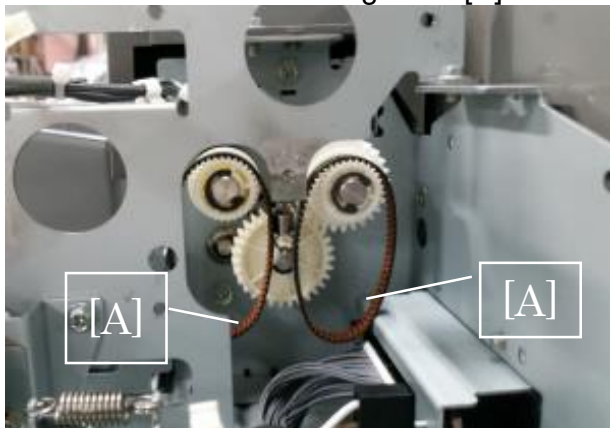
Date: 30-Mar-16

No.: RD517002a

5. Remove the three screws and spring [B] from the bracket [A] attached **to** the feed motor, and remove the bracket **and motor** as you tilt **the assembly** clockwise (viewed from the **rear**). (screw x3)



6. Remove the two timing belts [A]. Discard these timing belts as they will not be used.



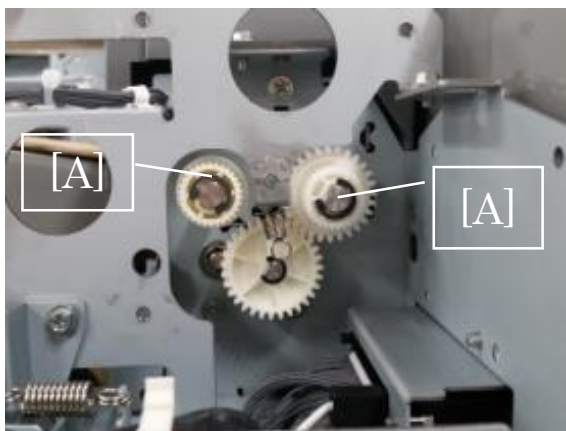
Reissued: 13-Jun-16

Model: Multi Bypass Tray BY5010

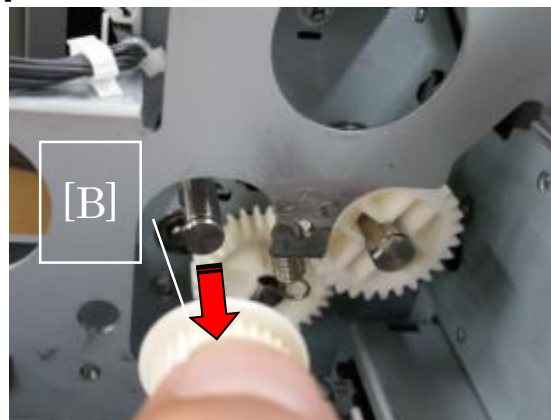
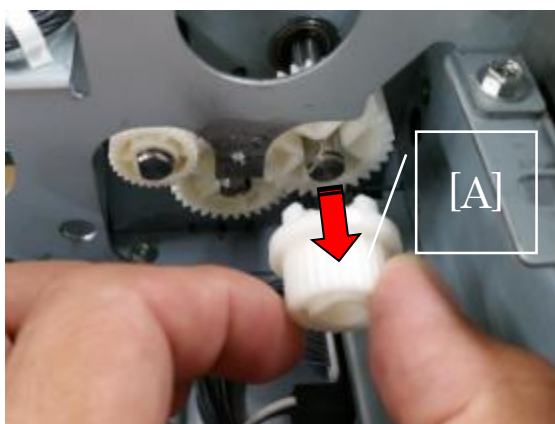
Date: 30-Mar-16

No.: RD517002a

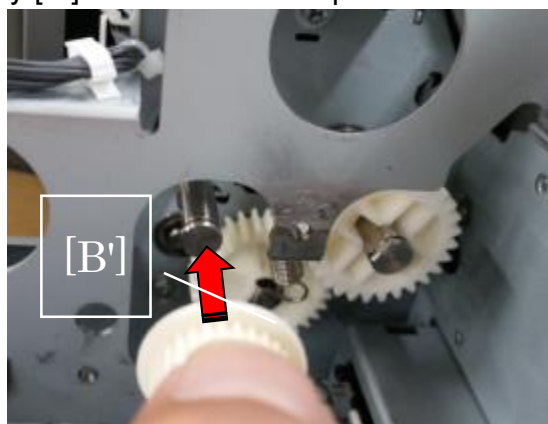
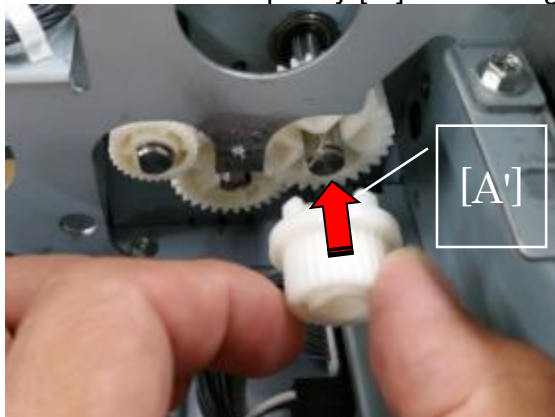
7. Remove two E-rings [A].



8. Remove the pulley [A] and timing pulley [B].



9. Install the new pulley [A'] and timing pulley [B'] included in the replacement kit.



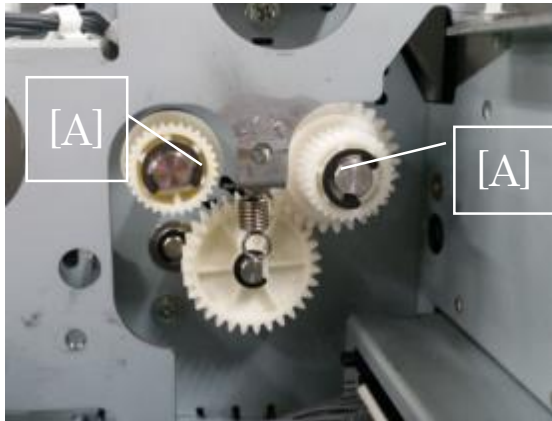
Reissued: 13-Jun-16

Model: Multi Bypass Tray BY5010

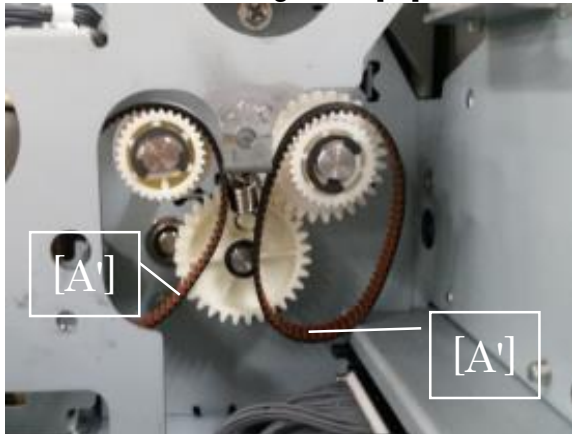
Date: 30-Mar-16

No.: RD517002a

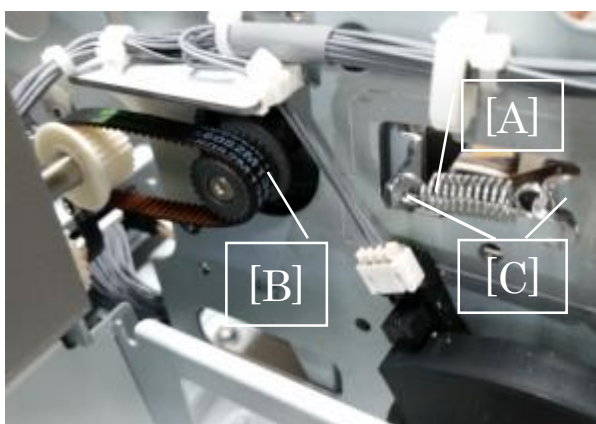
10. Install new E-rings [A]. (E-ring x2)



11. Install two timing belts [A'].



12. Attach the spring [A] to the hooks [C] on the bracket attached to the feed motor, wrap the timing belt [B] around the pulley, and fix the bracket with screws. (screw x3)



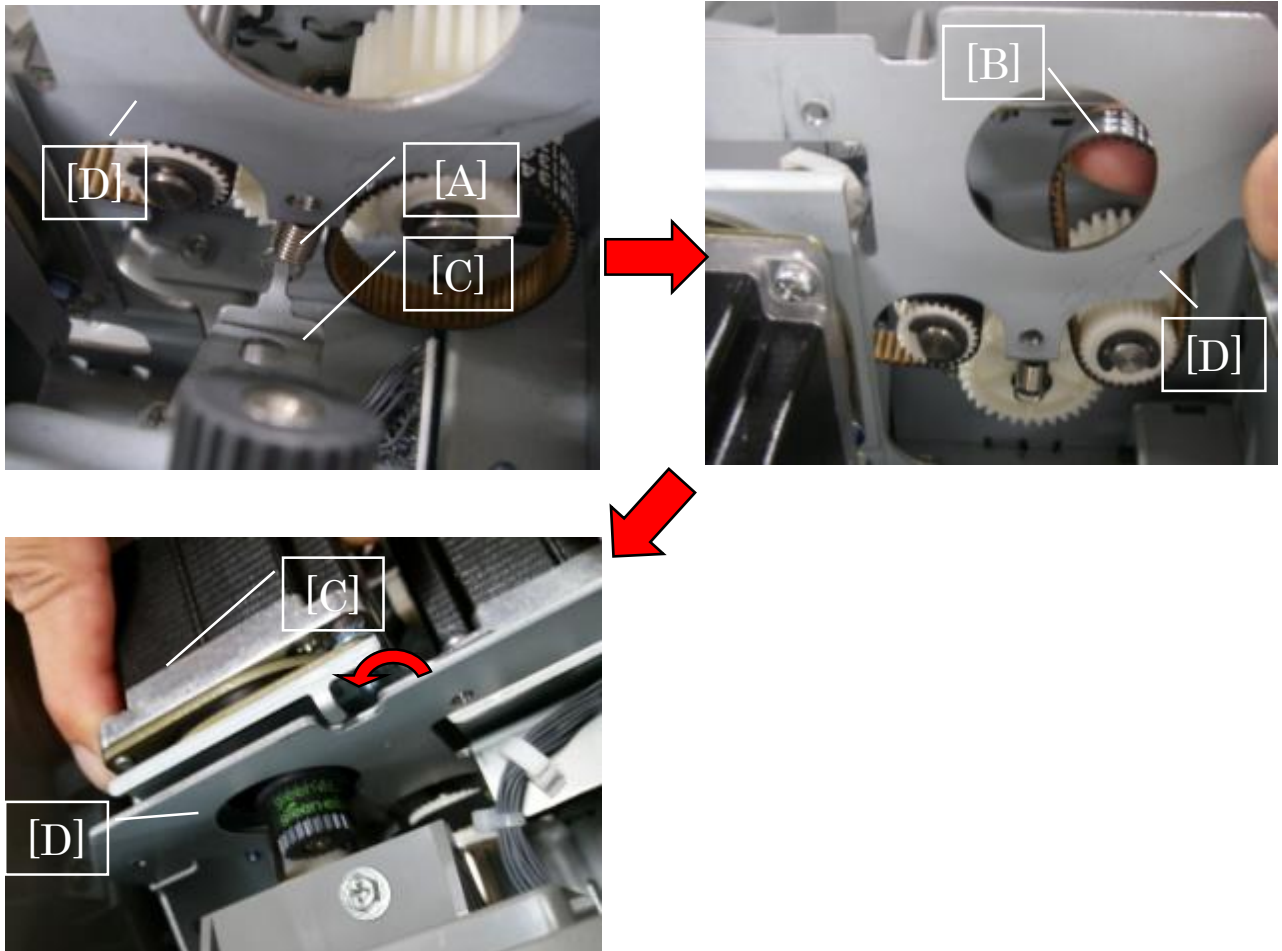
Reissued: 13-Jun-16

Model: Multi Bypass Tray BY5010

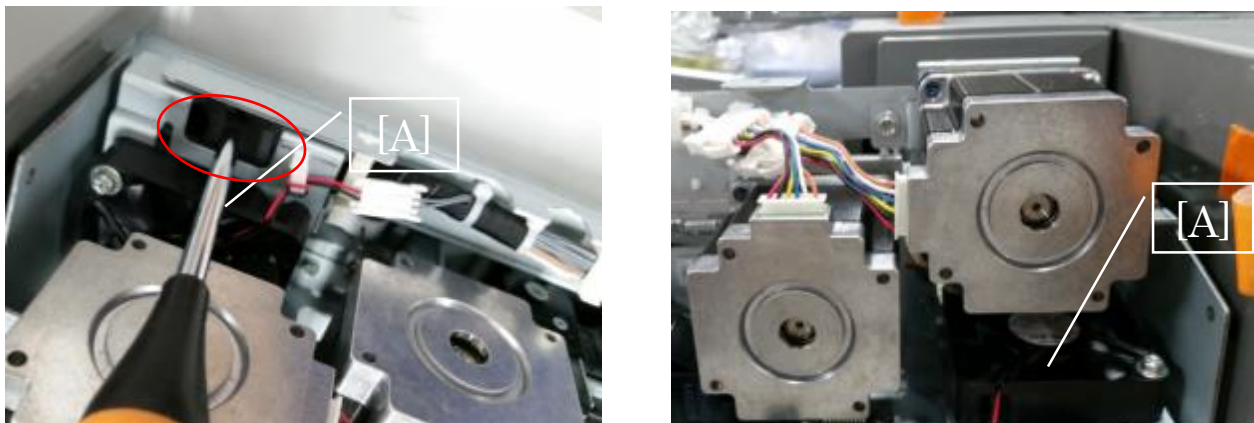
Date: 30-Mar-16

No.: RD517002a

13. Attach the spring [A] to the hook [C] on the bracket attached to the transport motor, wrap the timing belt [B] around the pulley, turn the bracket clockwise (viewed from the rear) as you set the hook on the rear plate [D], and fix the bracket with screws. (screw x3)



14. Install the bracket **and** the motor fan [A].



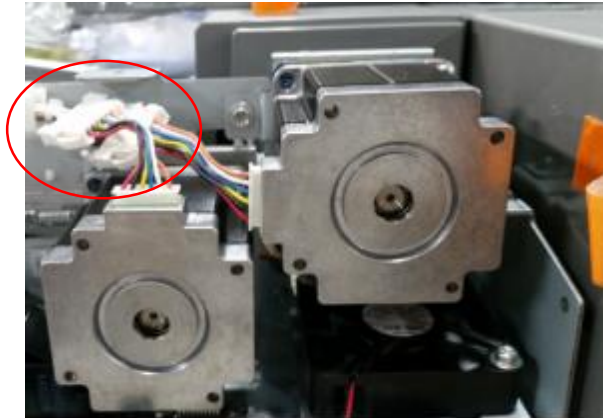
Reissued: 13-Jun-16

Model: Multi Bypass Tray BY5010

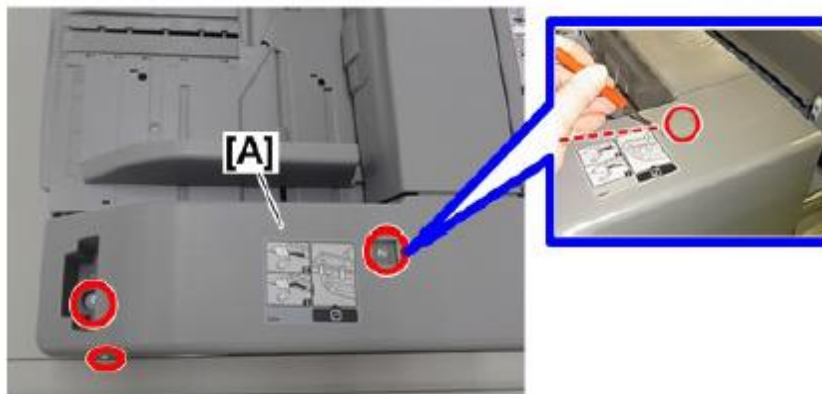
Date: 30-Mar-16

No.: RD517002a

15. Connect the connectors to the feed motor and transport motor. (connector x2)



16. Put back the cover [A].



17. ***End of procedure.***