

Multi Bypass Tray BY1040
Machine Code: J313

Field Service Manual

19 December, 2011

Safety and Symbols

Replacement Procedure Safety

CAUTION

- Turn off the main power switch and unplug the machine before beginning any of the procedures in this manual.

After Installation Servicing

Disposal of Used Items

WARNING







- Ink is flammable. Never attempt to incinerate empty ink cartridges.

CAUTION

- Always dispose of used items in accordance with the local laws and regulations regarding the disposal of such items.
- To protect the environment, never dispose of this product or any kind of waste from consumables at a household waste collection point. Dispose of these items at one of our dealers or at an authorized collection site.

Symbols

This manual uses the following symbols.

Symbol	What it means
	Bushings
	C-ring
	Connector
	E-ring
	Harness clamp
	Pointer




Symbol	What it means
	Screw
	Hook
	Timing belt

TABLE OF CONTENTS

Safety and Symbols.....	1
Replacement Procedure Safety.....	1
After Installation Servicing.....	1
Disposal of Used Items.....	1
Symbols.....	1
Before You Begin.....	4
Covers.....	5
Top Cover.....	5
Bottom Cover.....	5
Bypass Feed Motor Drive Board.....	7
Bypass Feed Motor.....	9
Bypass Feed Clutch.....	11
Rollers.....	12
Pickup Roller.....	12
Feed Roller.....	14
Friction Pad.....	17
Bypass Paper End Sensor.....	19
Reassembly.....	20
Remounting the Bypass Feed Motor.....	20
Remounting the Motor Bracket and the Drawer Harness.....	20
Remounting the Sensor Harness.....	22
Remounting the Multi Bypass Tray.....	23

Before You Begin

Check the order of removal before you disassemble the bypass tray.

No.	Item	Preparation
1	Top cover	<ul style="list-style-type: none">• None
2	Bottom cover	<ul style="list-style-type: none">• Top cover
3	Bypass feed motor drive board	<ul style="list-style-type: none">• Top cover• Bottom cover
4	Bypass feed motor	<ul style="list-style-type: none">• Top cover• Bottom cover• Bypass feed motor drive board
5	Bypass feed clutch	<ul style="list-style-type: none">• Top cover• Bottom cover• Bypass feed motor and board
6	Pickup roller	<ul style="list-style-type: none">• Top cover• Bottom cover• Bypass feed motor• Bypass feed clutch
7	Feed Roller	<ul style="list-style-type: none">• Top cover• Bottom cover• Bypass feed motor
8	Friction pad	<ul style="list-style-type: none">• Top cover• Bottom cover• Bypass feed motor• Bypass feed clutch• Pickup roller
9	Bypass Paper End Sensor	<ul style="list-style-type: none">• Top cover• Bottom plate

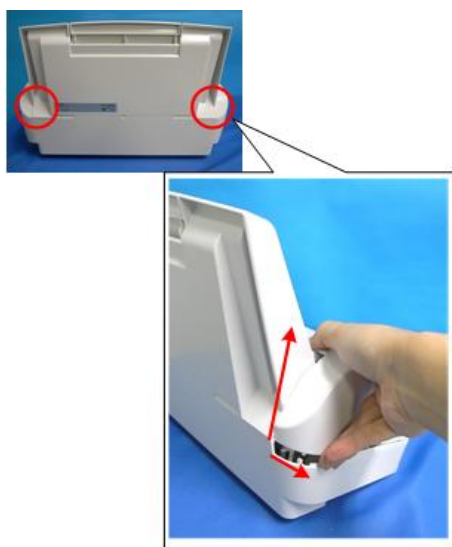
Covers

Top Cover



j3139001

1. Unscrew two screws ( x2).



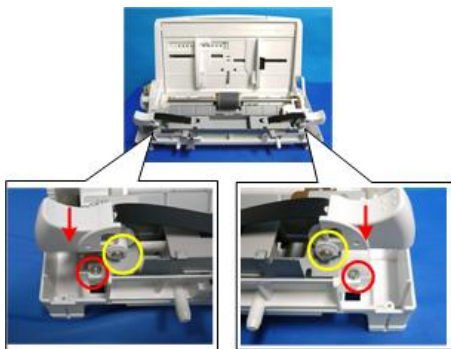
j3139005

2. Remove the top cover ( x2).

Bottom Cover

Preparation

- Remove the top cover ( x2,  x2).



j3139002

1. Remove the screws and clips (⌘ x2, 🔩 x2).
2. Pull the each tabs toward front to throw out from the bars.



j3139060

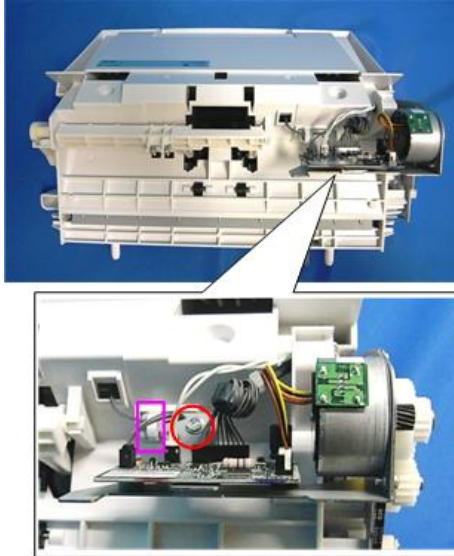
3. Remove the bottom cover.

Bypass Feed Motor Drive Board

Preparation

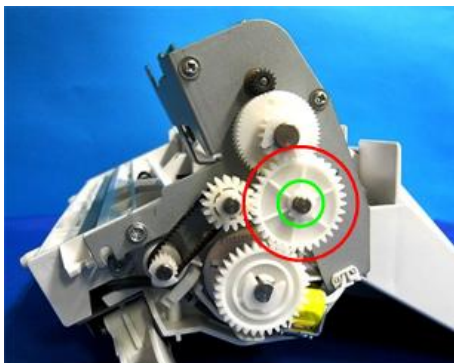
Remove:

- Top Cover (🔧 p.5)
- Bottom Cover (🔧 p.5)



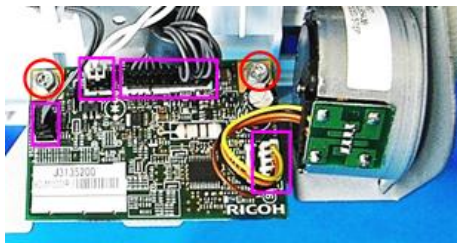
j3139012

1. Remove bottom plate screw and free the harness (🔧 x1, 🔧 x1).



j3139014

-
2. Disconnect the gear (⚙️x1).



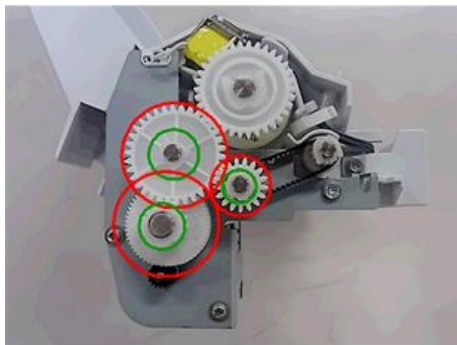
j3139016

3. Disconnect the bypass feed motor drive board from the bracket(⚙️ x2, 📁 x4).

Bypass Feed Motor

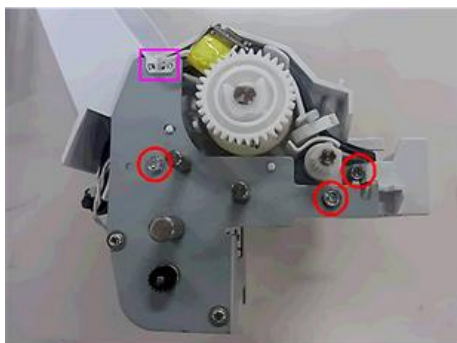
Preparation

- Remove the bypass feed motor drive board (p.7).



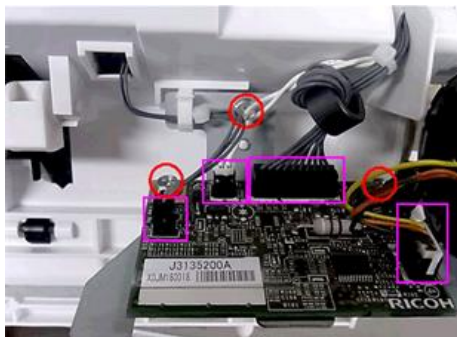
j3139082

1. Disconnect three gears (x3).



j3139083

2. Disconnect the bypass feed motor bracket (x3, x1).



j3139084

-
3. Disconnect the bypass feed motor drive board from the bracket ( x3,  x4).



j3139085

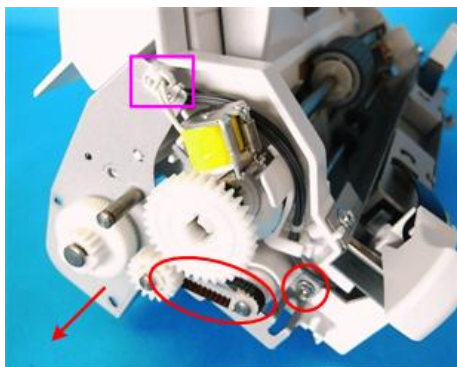
4. Disconnect the bypass feed motor ( x2).

Bypass Feed Clutch

Preparation

Remove

- Top Cover (p.5)
- Bottom Cover (p.5)
- Bypass Feed Motor Drive Board (p.7)
- Bypass Feed Motor (p.9)



j3139066

1. Remove the gears bracket ( x1,  x1,  x1).




j3139067

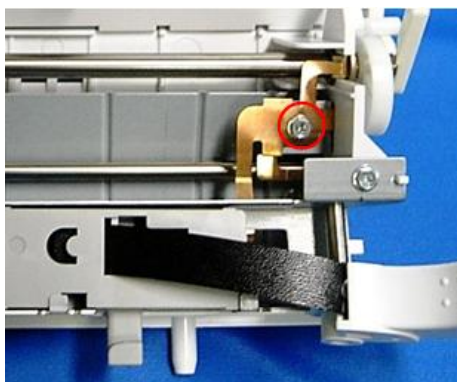
2. Remove the bypass feed clutch.

Rollers

Pickup Roller

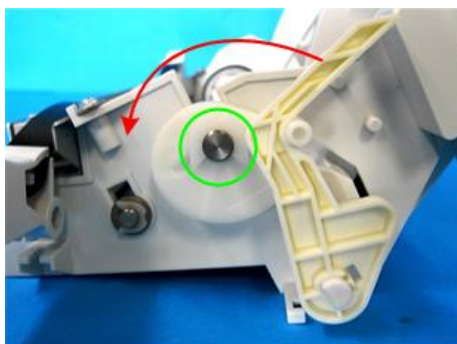
Preparation

- Remove the bypass feed clutch ( p.11)



j3139026

1. Remove the ground plate ( x1).



j3139069

-
2. Remove the clip ( x1), and then move the arm to down.



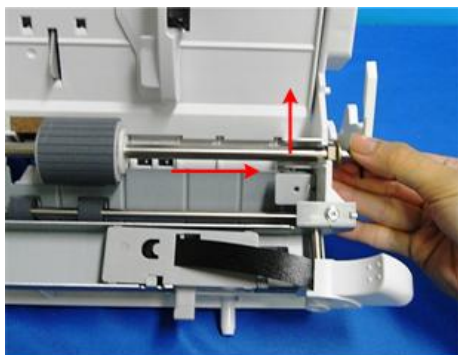
j3139070

3. Remove the cam.



j3139071

4. Remove the busing ( x1).



j3139028

-
5. On the right, remove the roller shaft.



j3139029

6. Slide the cam off the shaft.

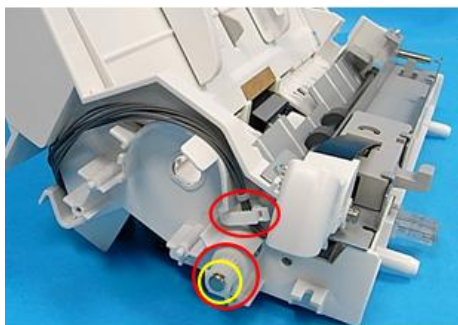
★ Important

- The pickup roller cannot be removed from the shaft. The pickup roller and shaft comprise a single replacement part.

Feed Roller

Preparation

- Remove bypass feed unit (p.9)



j3139035

1. On the left, free the drawer connector harness cable (x1) and one way clutch (x1).



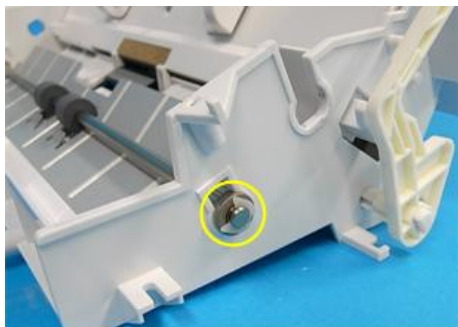
j3139036

-
2. Remove the tab units both of the left and right.



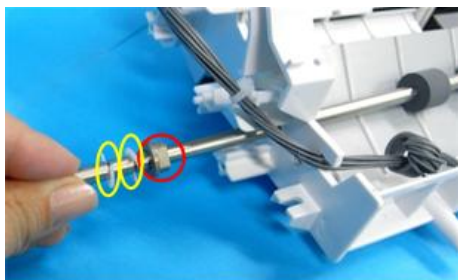
j3139038

3. Remove the tab unit bracket ( x2).



j3139040

4. Remove the parts on the right end of shaft ( x1,  x1).



j3139043

-
5. Pull the shaft to left about 10cm, then slide the parts off the shaft (⚙️x2, 🟠x1).



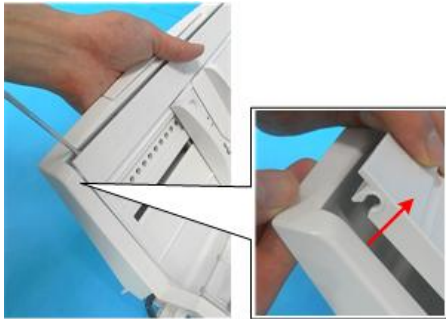
j3139044

6. To remove a transport roller, lift the right end first then slide the shaft from the left to disconnect it.

Friction Pad

Preparation

- Remove pickup roller (p.12)



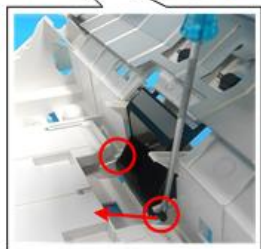
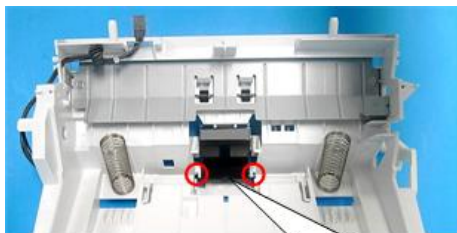
j3139047

1. Disconnect the upper hinges the left side first.



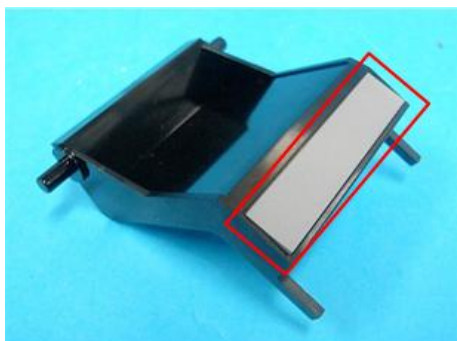
j3139049

2. Disconnect the feed panel.



j3139051

3. Press out both hinges.

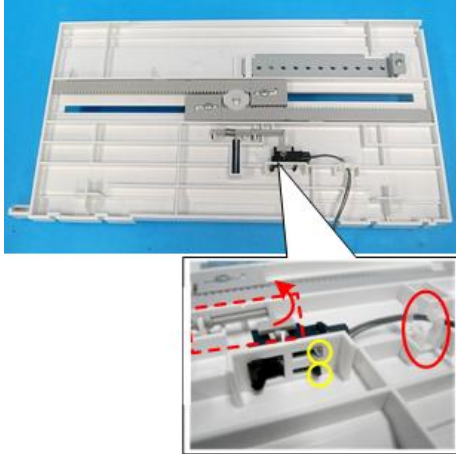


j3139055

4. Remove the friction pad.

Bypass Paper End Sensor

1. Turn the bottom plate over.



j3139056

2. Disconnect and remove the sensor (▼ x2, 🗑️ x1).

Reassembly

Remounting the Bypass Feed Motor

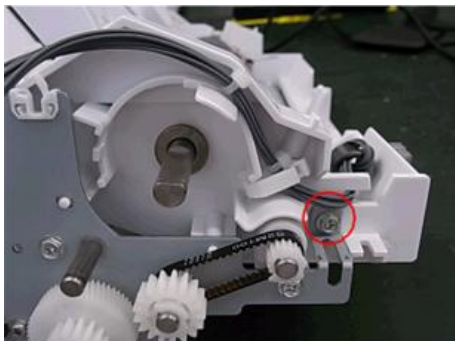
Check that the motor is located correctly for engagement with the gear.



j3139081

Remounting the Motor Bracket and the Drawer Harness

To prevent the drawer harness from being jammed in the motor bracket, mount the motor bracket as follows:



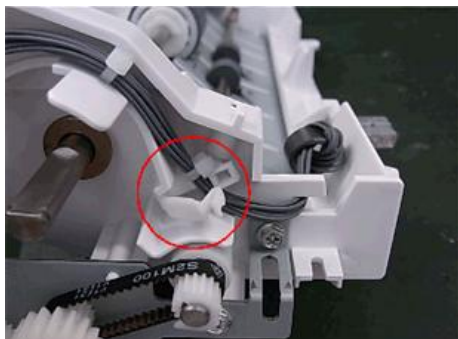
j3139074

1. Mount the motor bracket before connecting the drawer harness.



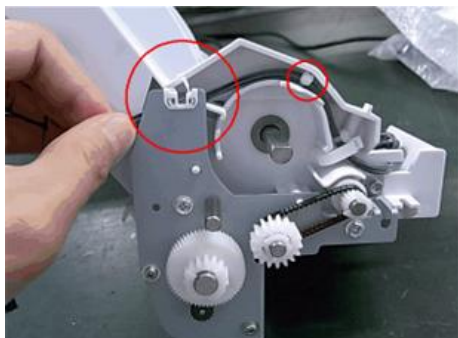
j3139075

2. Thread the drawer harness through the hook and reconnect it.



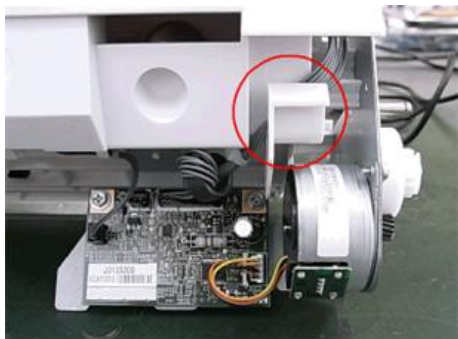
j3139076

3. Engage the clamp with the bind positioned to its left.



j3139077

-
4. Thread the harness behind the bracket to prevent the harness from being in contact with the bracket.



j3139078

5. Thread the harness behind the hook.

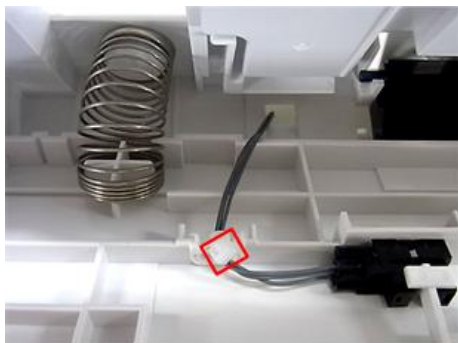
Remounting the Sensor Harness

To prevent the sensor harness from coming off, position the bind as follows:



j3139079

1. Position the bind between the clamp and board.

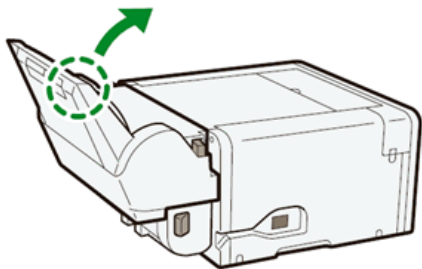


j3139080

-
2. Position the bind to be between the clamp and sensor.

Remounting the Multi Bypass Tray

If the tabs do not return to their original positions, push the tray in while pulling up on its top left part as shown below.



j3130001