

Multi Bypass Tray BY1020
Machine Code: J311

Field Service Manual

07 June 2011

Safety and Symbols

Replacement Procedure Safety

CAUTION

- Turn off the main power switch and unplug the machine before beginning any of the procedures in this manual.

Symbols

This manual uses the following symbols.










Symbol	What it means
	Bushings
	C-ring
	Connector
	E-ring
	Harness clamp
	Pointer
	Screw
	Hook
	Spring

TABLE OF CONTENTS

Safety and Symbols.....	1
Replacement Procedure Safety.....	1
Symbols.....	1
1. Replacement and Adjustment	
Before You Begin.....	3
Covers.....	4
Top Cover.....	4
Bottom Cover.....	4
Bypass Feed Motor.....	5
Bypass Feed Motor Drive Board.....	7
Bypass Feed Clutch.....	8
Rollers.....	9
Pickup Roller.....	9
1 st, 2nd Feed Rollers.....	11
Friction Pad.....	15
Bypass Paper End Sensor.....	16

1. Replacement and Adjustment

Before You Begin

1

Check the order of removal before you disassemble the bypass tray.

No.	Item	Preparation
1	1st, 2nd Feed Rollers	<ul style="list-style-type: none">• Top cover• Bottom cover• Bypass feed motor
2	Bottom cover	<ul style="list-style-type: none">• Top cover
3	Bypass Paper End Sensor	<ul style="list-style-type: none">• Top cover• Bottom plate
4	Bypass feed clutch	<ul style="list-style-type: none">• Top cover• Bottom cover• Bypass feed motor mount
5	Bypass feed motor	<ul style="list-style-type: none">• Top cover• Bottom cover
6	Bypass feed motor drive board	<ul style="list-style-type: none">• Top cover• Bottom cover• Bypass feed motor mount
7	Friction pad	<ul style="list-style-type: none">• Top cover• Bottom cover• Bypass feed motor• Bypass feed clutch• Pickup roller
8	Pickup roller	<ul style="list-style-type: none">• Top cover• Bottom cover• Bypass feed motor• Bypass feed clutch
9	Top cover	<ul style="list-style-type: none">• None

Covers

1

Top Cover



j311r003

1. Remove the unit.
2. Remove the top cover (⚠ x2, 🔧 x2).

Bottom Cover



j311r004

Preparation

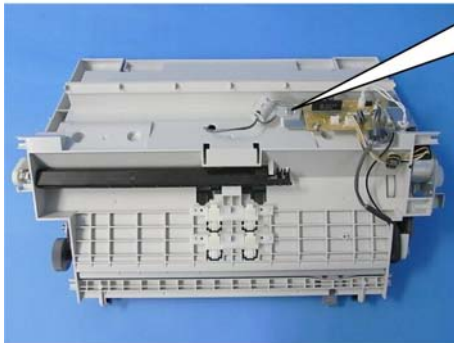
- Remove the top cover (⚠ x2, 🔧 x2).
1. Remove the bottom cover (🔧 x4).

Bypass Feed Motor

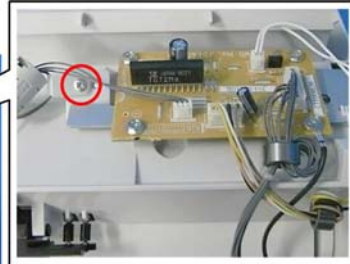
Preparation

Remove:

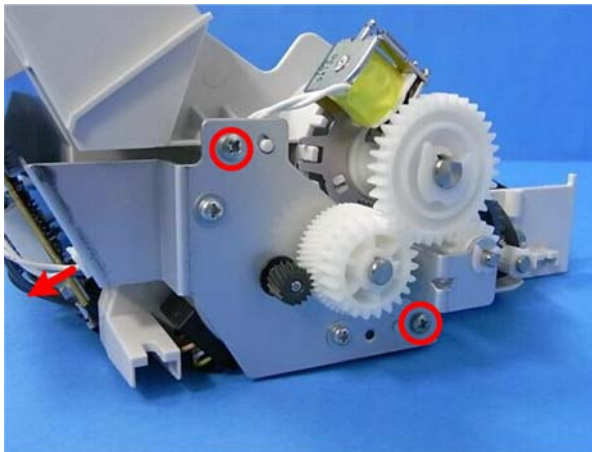
- Top Cover (🔧 p.4)
- Bottom Cover (🔧 p.4)



j311r005

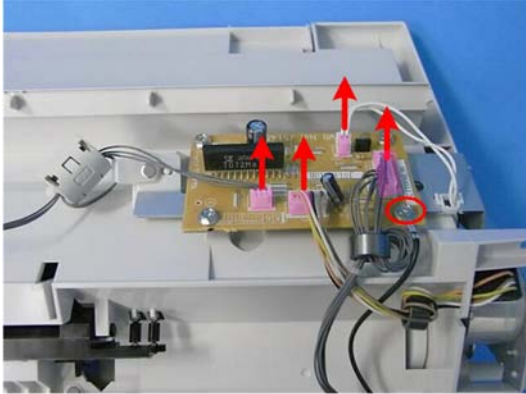


1. Remove bottom plate screw and free the harness (🔧 x1).



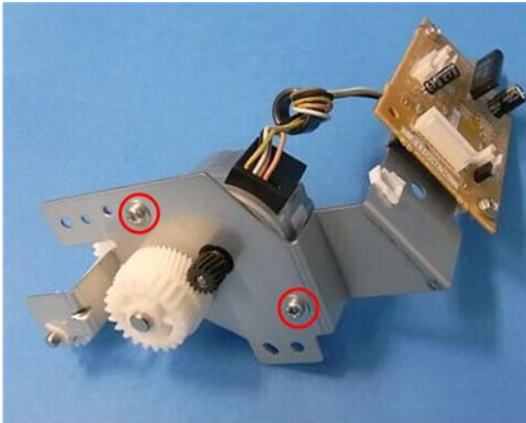
j311r006

2. Disconnect the left plate (🔧 x1, 🔧 x2).



j311r007

3. Disconnect the bypass unit control board and ground wire, and then separate the drive unit from the bypass unit (🔧 x4, 🔧 x1).



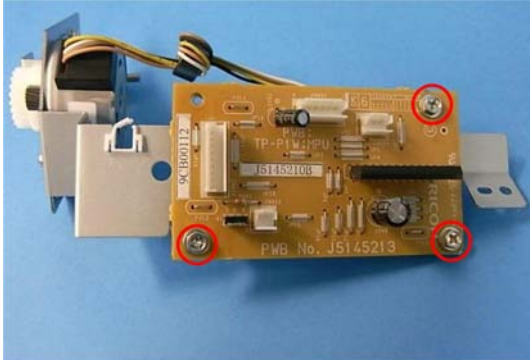
j311r008

4. Separate the motor and motor bracket (🔧 x2).

Bypass Feed Motor Drive Board

Preparation

- Remove the bypass feed motor (p.5).



j311r009

1. Remove the bypass unit control board (x3).

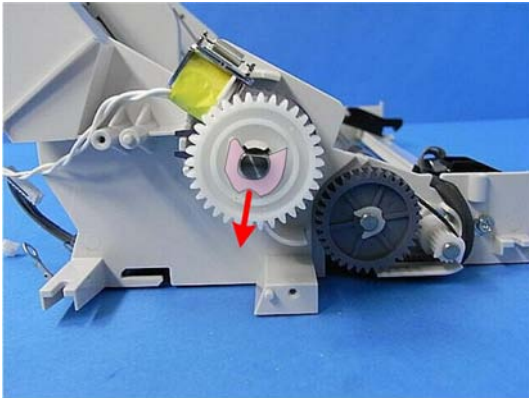
Bypass Feed Clutch

1

Preparation

Remove

- Top Cover (p.4)
- Bottom Cover (p.4)
- Bypass Feed Motor (to Step 3) (p.5)



j311r010

1. Remove the clutch (x1).

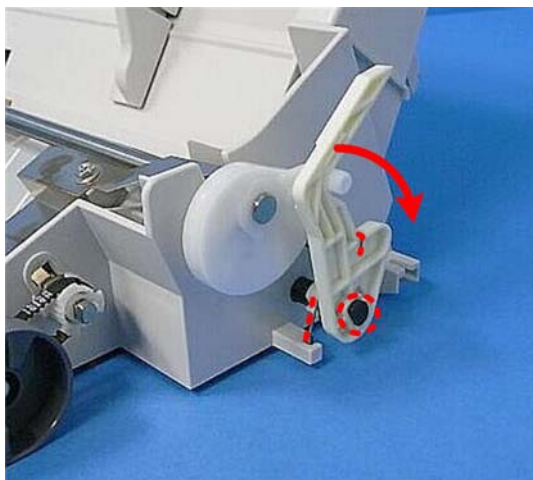
Rollers

Pickup Roller

1

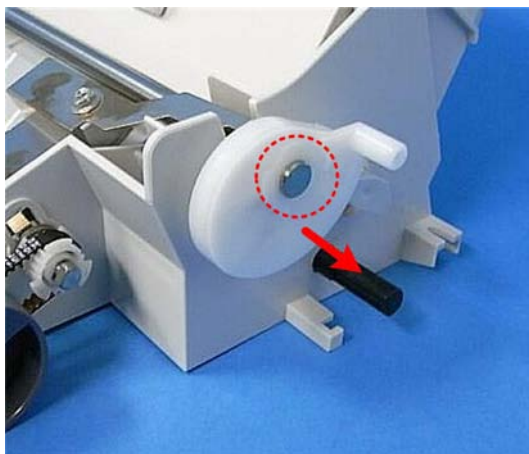
Preparation

- Remove the bypass feed clutch (p.8)



j311r011

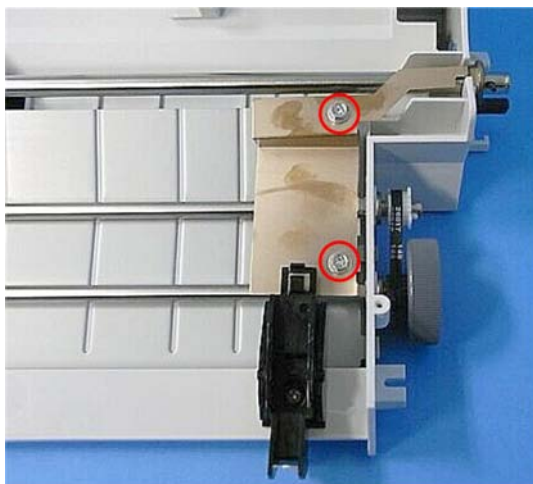
1. On the right side, remove the stopper (x1, x1).



j311r012

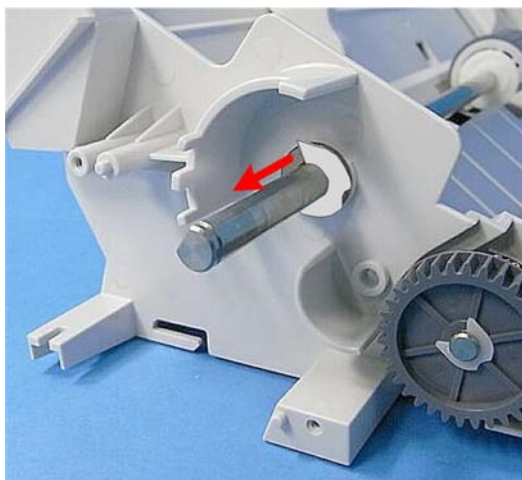
2. Remove the cam (x1).

1





j311r013

3. Remove the ground plate ( x2).



j311r014

4. On the left, remove the roller shaft ( x1,  x1).



j311r015

5. Slide the cam off the shaft.



j311r016

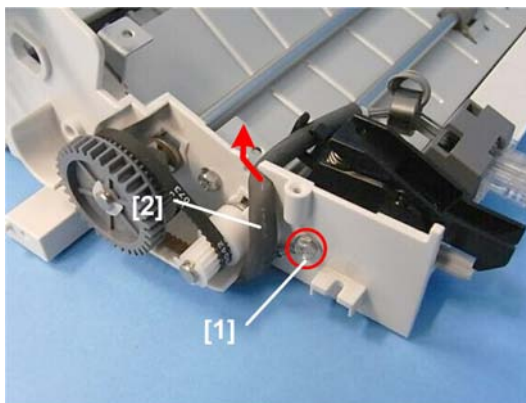
★ Important

- The pickup roller cannot be removed from the shaft. The pickup roller and shaft comprise a single replacement part.

1st, 2nd Feed Rollers

Preparation

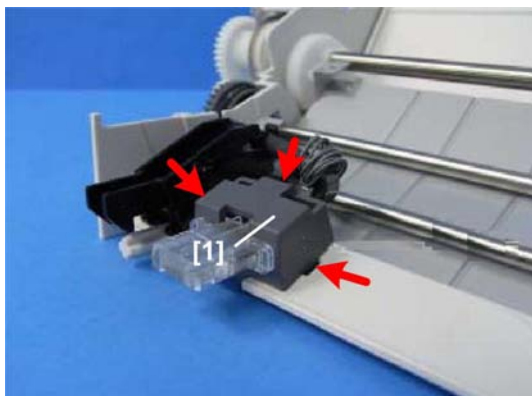
- Remove bypass feed unit (p.5)



j311r019

1. On the left, disconnect the ground wire [1] and free the drawer connector harness cable [2] (x1).

1



j311r020

2. Separate the drawer connector [1] from it bracket (▼ x3).



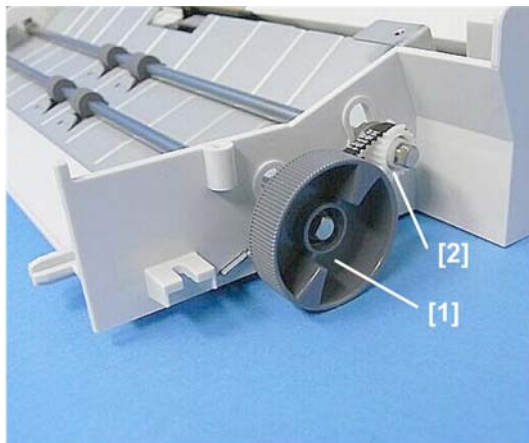
j311r021

3. Remove the left and right lock levers (⚙ x2).




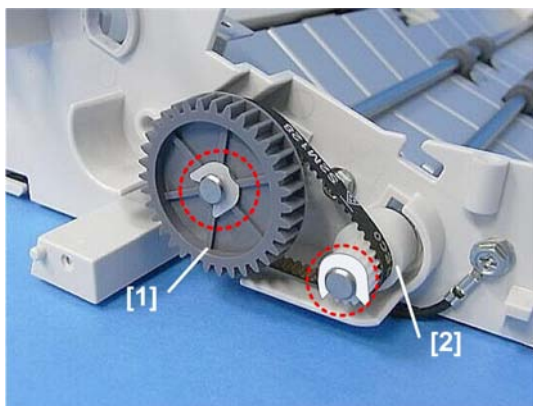
j311r022

4. Remove the ground plate ( x2).





j311r023

5. On the right, remove the dial, gear, and timing belt ( x2,  x1)



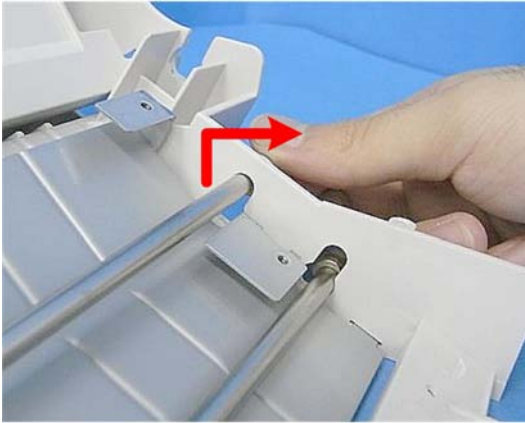
j311r024

6. On the left, remove the gear [1], timing belt and one-way clutch [2] ( x2,  x1).



j311r026

7. Disconnect the two transport rollers ( x2 ea.,  x2 ea.)



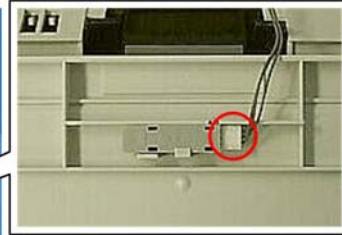
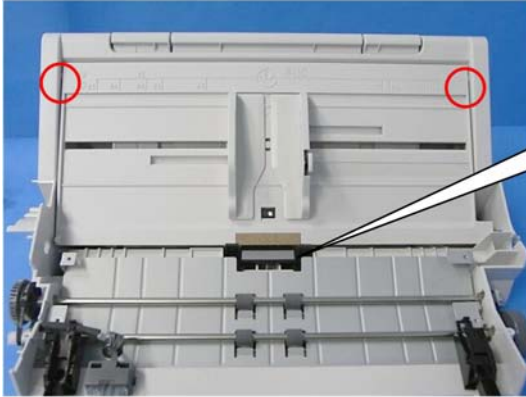
j311r025

8. To remove a transport roller, lift the right end first then slide the shaft from the left to disconnect it.

Friction Pad

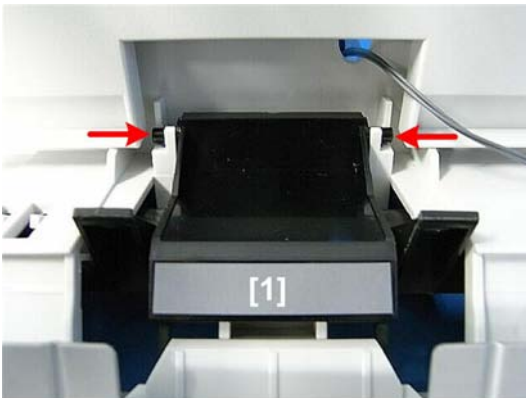
Preparation

- Remove pickup roller (p.9)



j311r017

1. Disconnect the two upper hinges and remove the bottom plate (x1).

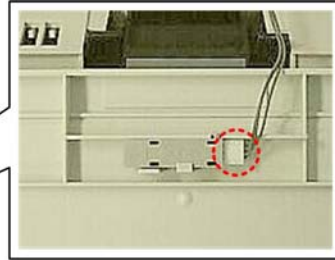
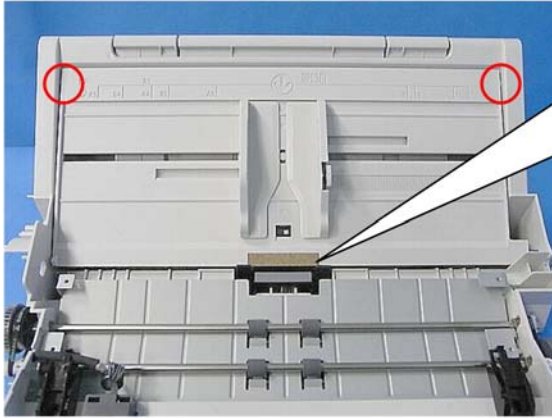


j311r018

2. Press in both hinges and remove the friction pad [1].

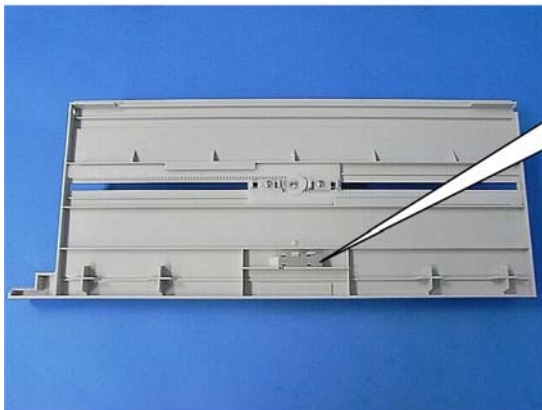
Bypass Paper End Sensor

1



j311r027

1. Disconnect the upper hinges and remove the bottom plate (j311r028 x1).



j311r028

2. Turn the bottom plate over.
3. Disconnect and remove the sensor (j311r028 x1).