

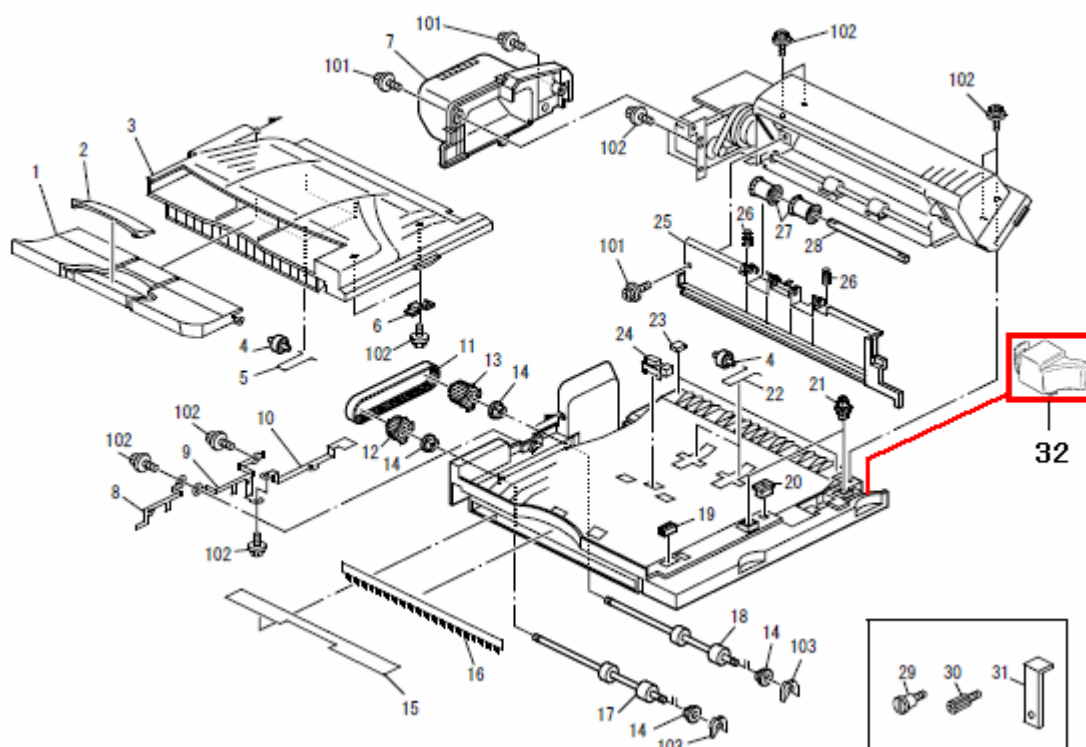
Model: AT-C1c/d		Date: 22-Jul-09	No.: RB227001
Subject: Cover Frame for BU3000		Prepared by: M. Kumagai	
From: 2nd Tech Support Sec. Service Support Dept.			
Classification:	<input type="checkbox"/> Troubleshooting <input checked="" type="checkbox"/> Part information <input type="checkbox"/> Action required <input type="checkbox"/> Mechanical <input type="checkbox"/> Electrical <input type="checkbox"/> Service manual revision <input type="checkbox"/> Paper path <input type="checkbox"/> Transmit/receive <input type="checkbox"/> Retrofit information <input type="checkbox"/> Product Safety <input type="checkbox"/> Other ()		

Old part number	New part number	Description	Q'ty	Int	Page	Index	Note
-	M3214743	Cover Frame	1		3	32	*

Change/Reason: An additional cover for the frame was added.

*New index number

.BRIDGE UNIT 1 (B227)



Model: AT-C1 Bridge Unit (BU3000)		Date: 21-Dec-09	No.: RB227002
Subject: Parts information		Prepared by: M. Kumagai	
From: 1st Overseas Tech Support Sec., 1st PQM Dept.			
Classification:	<input type="checkbox"/> Troubleshooting <input type="checkbox"/> Mechanical <input type="checkbox"/> Paper path <input type="checkbox"/> Product Safety	<input checked="" type="checkbox"/> Part information <input type="checkbox"/> Electrical <input type="checkbox"/> Transmit/receive <input type="checkbox"/> Other ()	<input type="checkbox"/> Action required <input type="checkbox"/> Service manual revision <input type="checkbox"/> Retrofit information <input type="checkbox"/> Tier 2

Change / Reason: The following part number was corrected.

Incorrect part number	Correct part number	Description	Q'ty	Int	Page	Index	Note
AB030789	AB030788	PULLEY:MECHANICAL ROLLER CLUTCH:JOINT UNIT	1		3	12	

1.BRIDGE UNIT 1 (B227)

